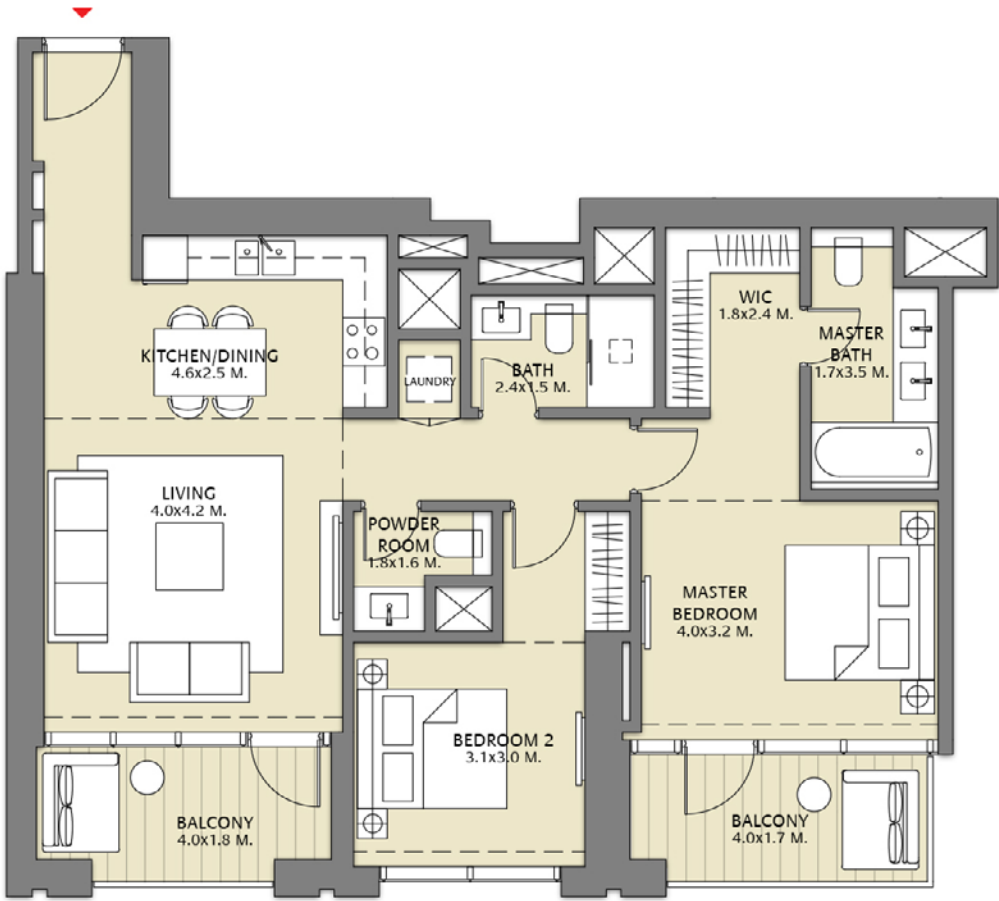
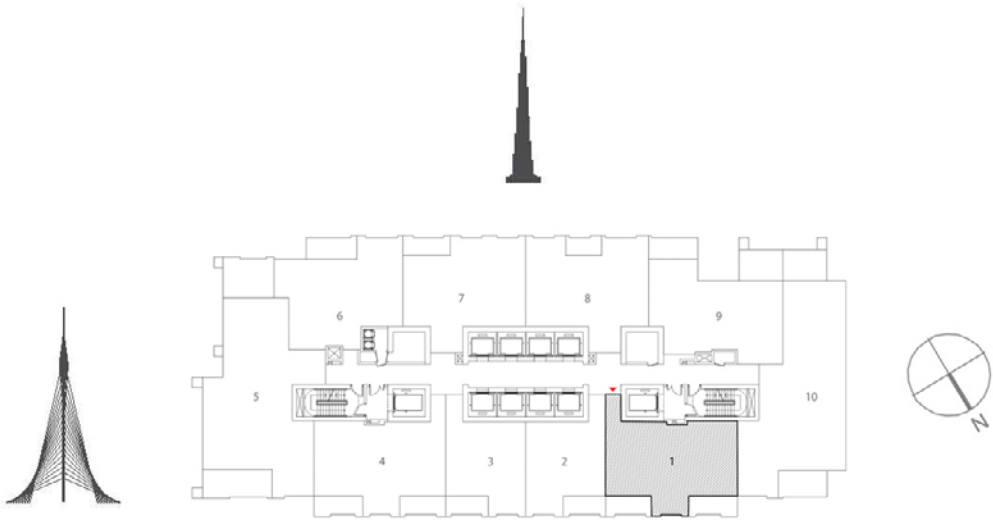


## FLOOR PLANS



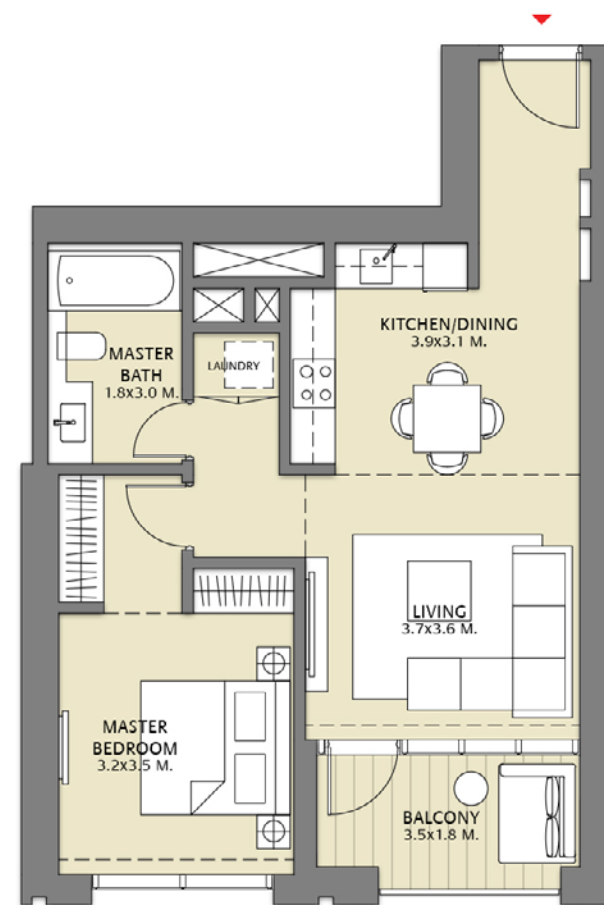
TOWER 1  
2 BEDROOM W/BALCONY  
UNIT 01/ LEVELS 2-15, 17-35

|              |                               |
|--------------|-------------------------------|
| Suite Area   | 997.38 Sq.ft. / 92.66 Sq.m.   |
| Balcony Area | 164.58 Sq.ft. / 15.29 Sq.m.   |
| Total Area   | 1161.96 Sq.ft. / 107.95 Sq.m. |



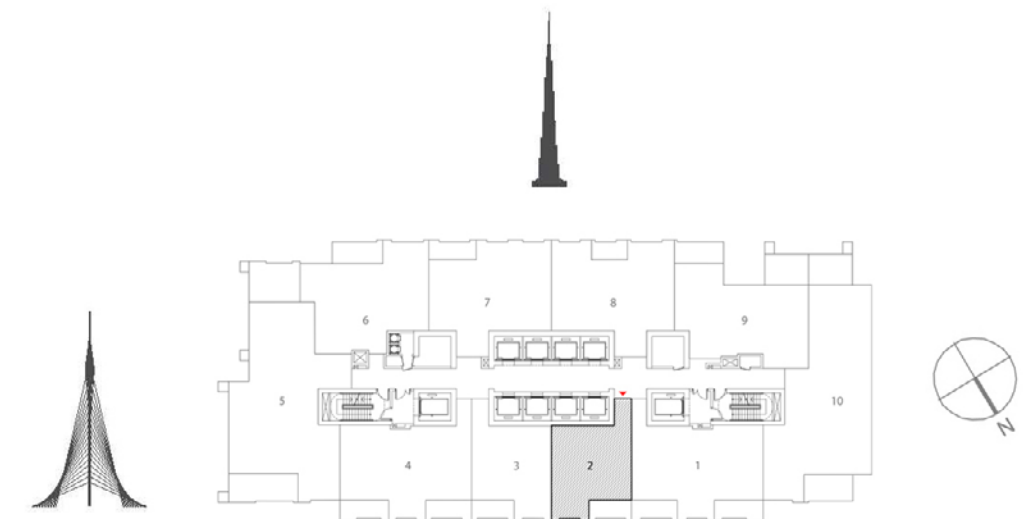
1. All dimensions are in imperial and metric, and measured to structural elements and exclude wall finishes and construction tolerances. 2. All materials, dimensions, and drawings are approximate only. 3. Information is subject to change without notice, at developer's absolute discretion. 4. Actual area may vary from the stated area. 5. Drawings not to scale. 6. All images used are for illustrative purposes only and do not represent the actual size, features, specifications, fittings, and furnishings. 7. The developer reserves the right to make revisions/alterations, at its absolute discretion, without any liability whatsoever.

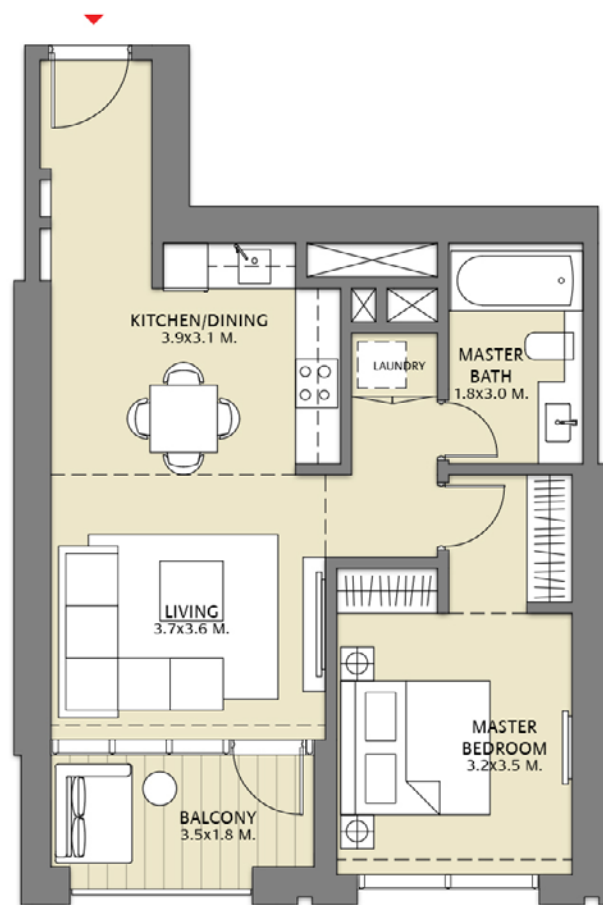




TOWER 1  
1 BEDROOM W/BALCONY  
UNIT 02/ LEVELS 2-15, 17-35

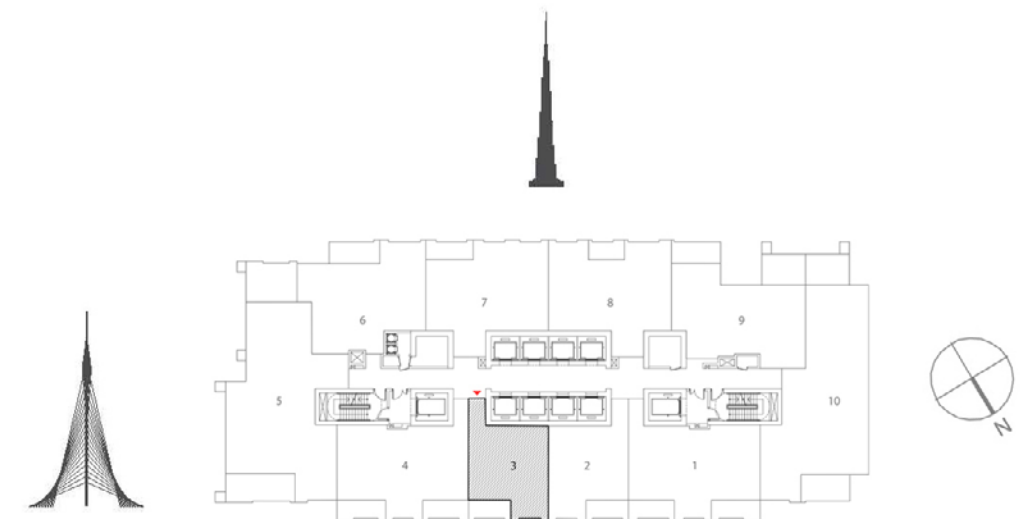
|              |                             |
|--------------|-----------------------------|
| Suite Area   | 658.75 Sq.ft. / 61.20 Sq.m. |
| Balcony Area | 76.42 Sq.ft. / 7.10 Sq.m.   |
| Total Area   | 735.18 Sq.ft. / 68.30 Sq.m. |



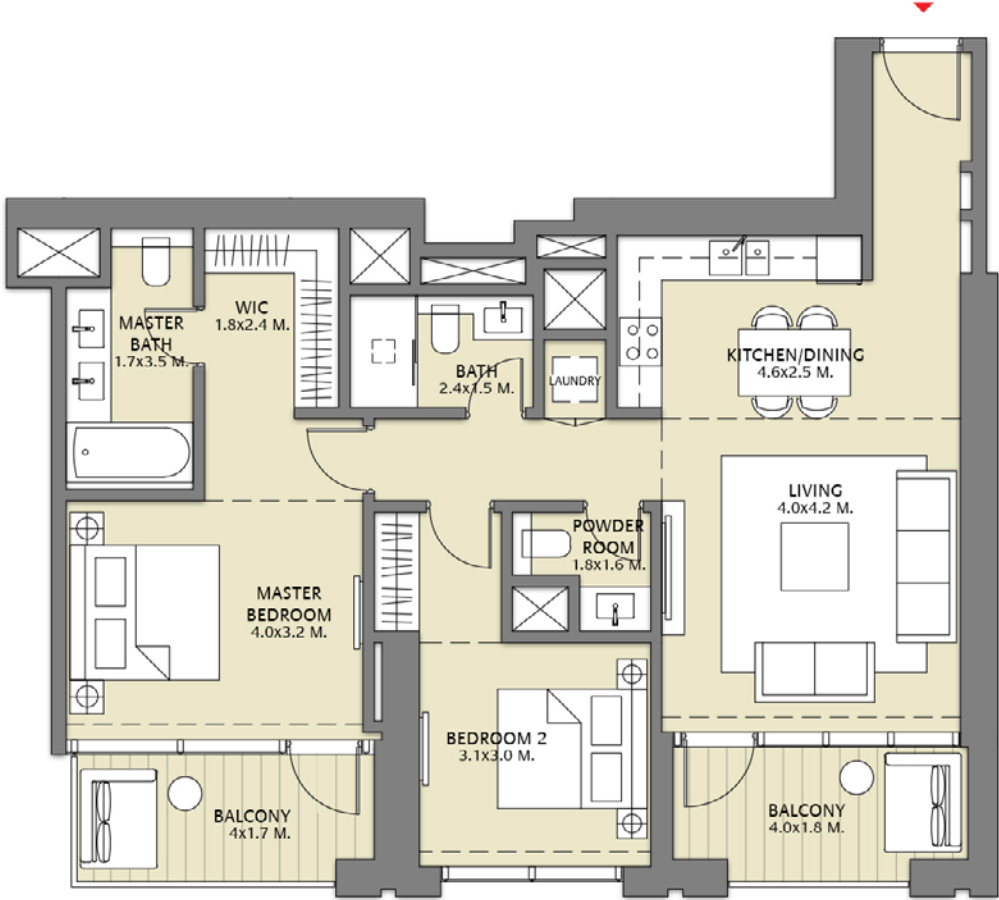


TOWER 1  
1 BEDROOM W/BALCONY  
UNIT 03/ LEVELS 2-15, 17-35

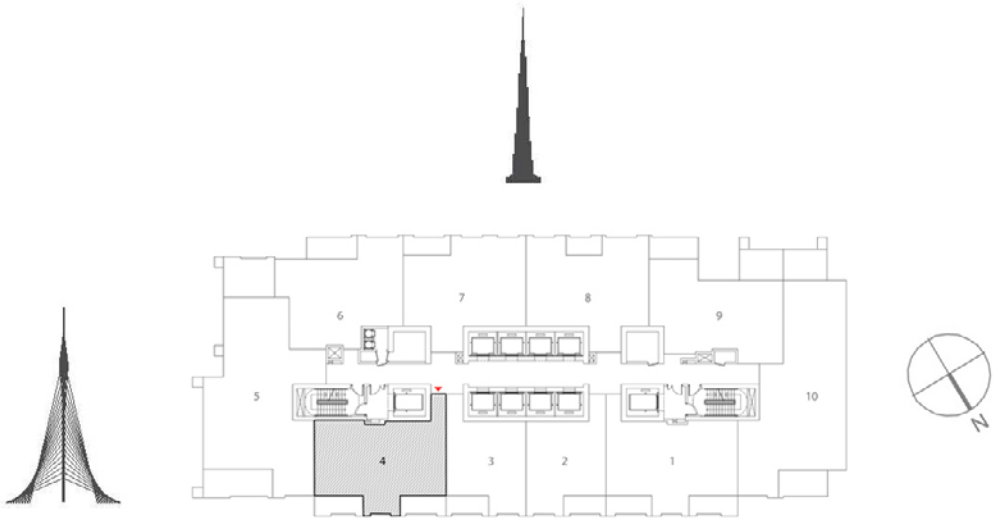
|              |                             |
|--------------|-----------------------------|
| Suite Area   | 658.75 Sq.ft. / 61.20 Sq.m. |
| Balcony Area | 76.42 Sq.ft. / 7.10 Sq.m.   |
| Total Area   | 735.18 Sq.ft. / 68.30 Sq.m. |



TOWER 1  
2 BEDROOM W/BALCONY  
UNIT 04/ LEVELS 2-15, 17-35

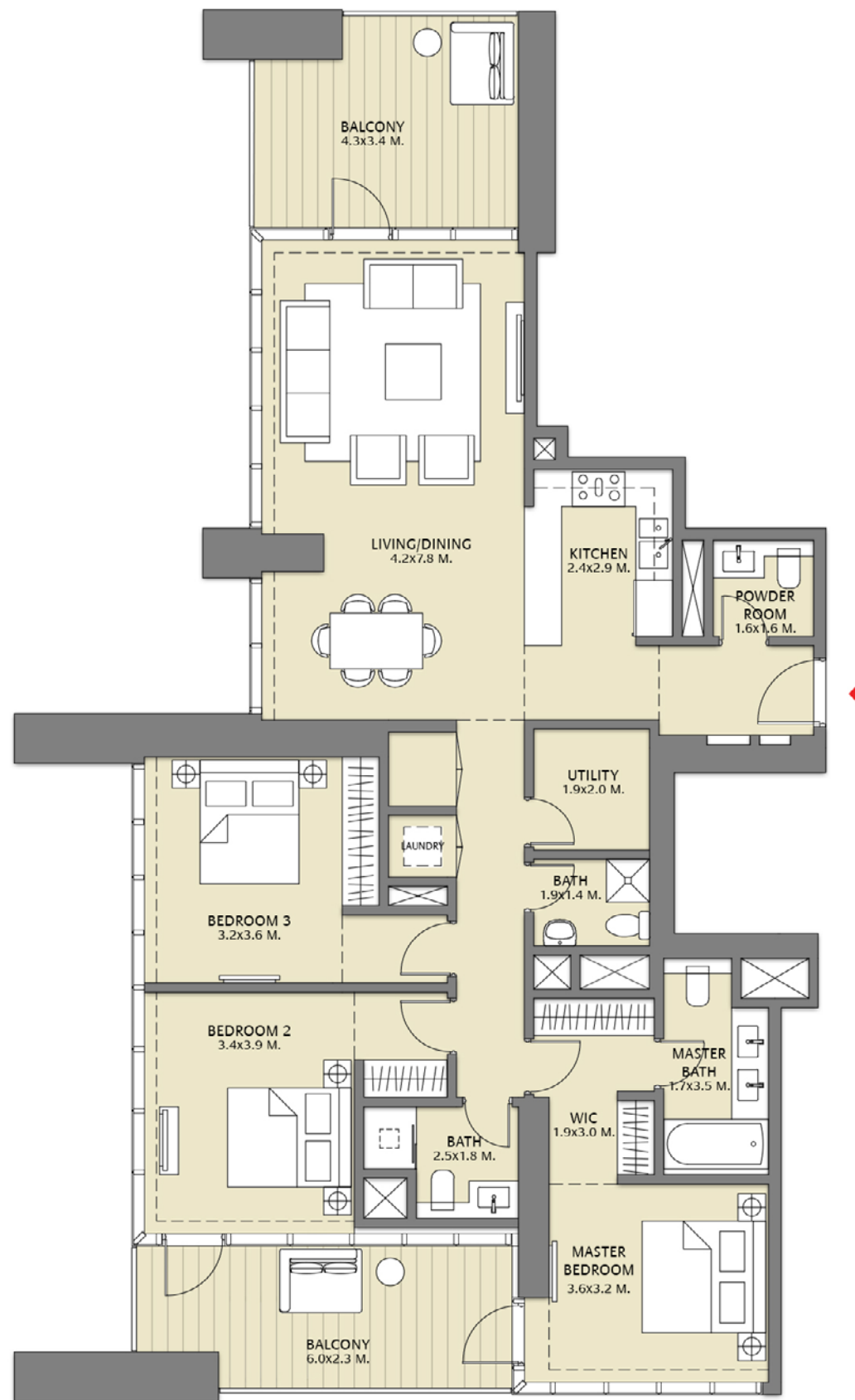


|              |                               |
|--------------|-------------------------------|
| Suite Area   | 997.38 Sq.ft. / 92.66 Sq.m.   |
| Balcony Area | 164.58 Sq.ft. / 15.29 Sq.m.   |
| Total Area   | 1161.96 Sq.ft. / 107.95 Sq.m. |



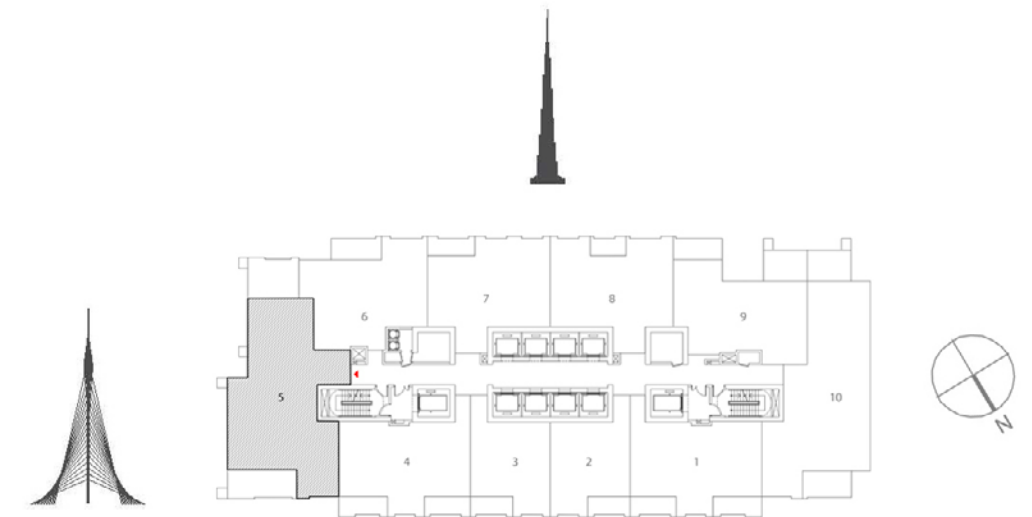
1. All dimensions are in imperial and metric, and measured to structural elements and exclude wall finishes and construction tolerances. 2. All materials, dimensions, and drawings are approximate only. 3. Information is subject to change without notice, at developer's absolute discretion. 4. Actual area may vary from the stated area. 5. Drawings not to scale. 6. All images used are for illustrative purposes only and do not represent the actual size, features, specifications, fittings, and furnishings. 7. The developer reserves the right to make revisions/alterations, at its absolute discretion, without any liability whatsoever.





**TOWER 1**  
**3 BEDROOM W/BALCONY**  
**UNIT 05/ LEVELS 2-15, 17-35**

|              |                               |
|--------------|-------------------------------|
| Suite Area   | 1522.56 Sq.ft. / 141.45 Sq.m. |
| Balcony Area | 329.38 Sq.ft. / 30.60 Sq.m.   |
| Total Area   | 1851.93 Sq.ft. / 172.05 Sq.m. |

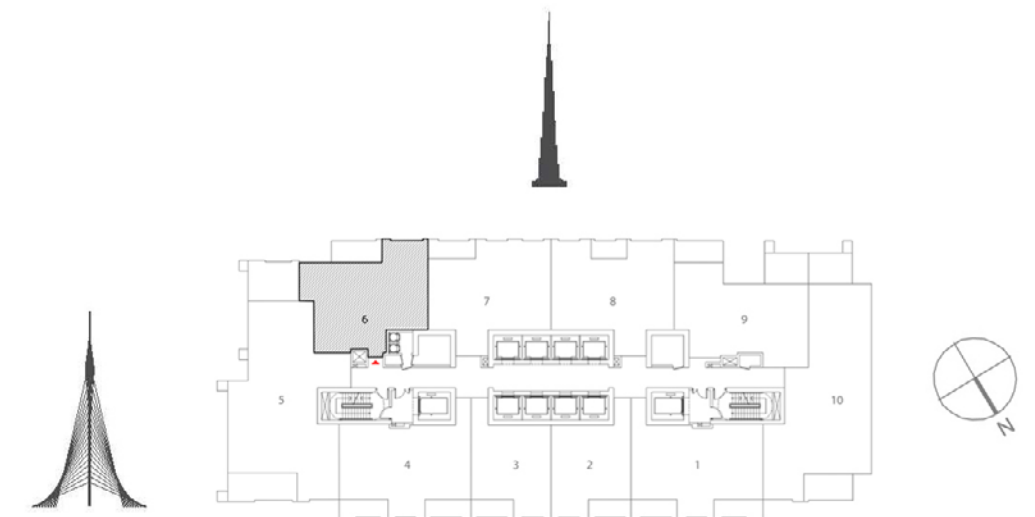




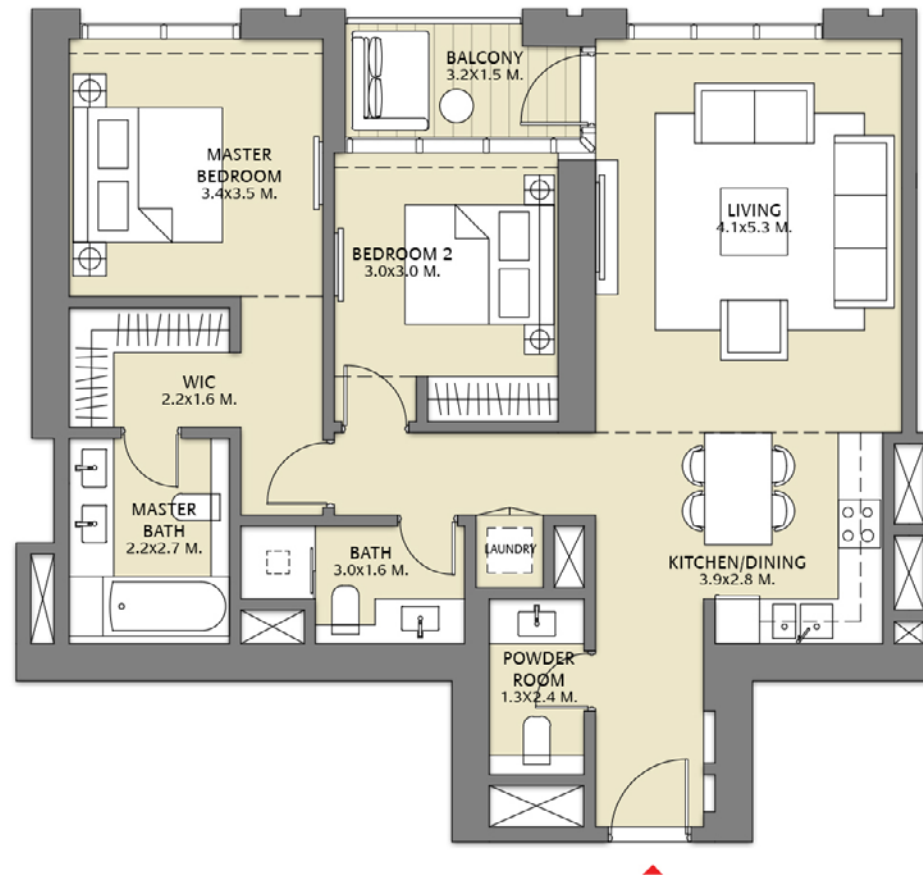
TOWER 1  
2 BEDROOM W/BALCONY  
UNIT 06/ LEVELS 2-15, 17-35



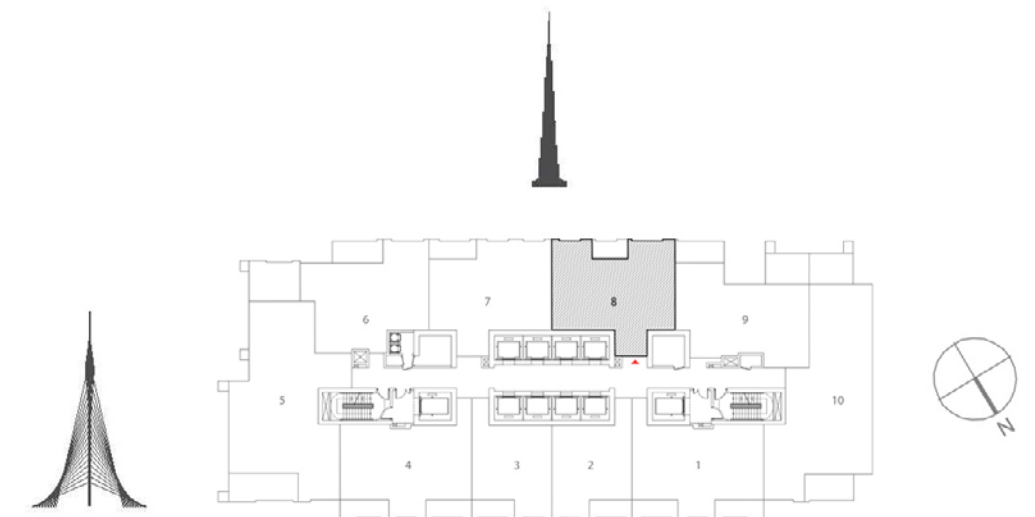
|              |                               |
|--------------|-------------------------------|
| Suite Area   | 1059.06 Sq.ft. / 98.39 Sq.m.  |
| Balcony Area | 86.76 Sq.ft. / 8.06 Sq.m.     |
| Total Area   | 1145.82 Sq.ft. / 106.45 Sq.m. |



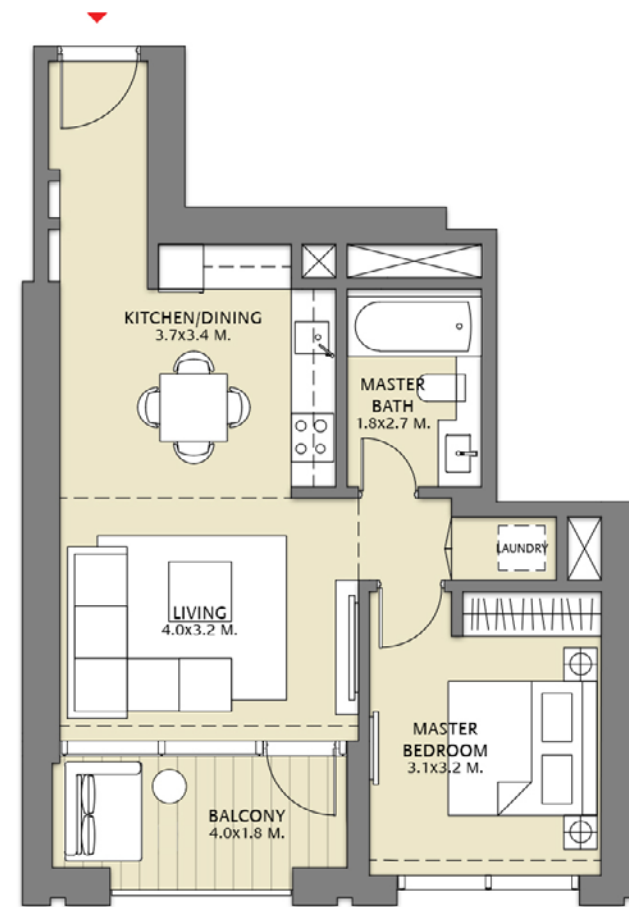
TOWER 1  
2 BEDROOM W/BALCONY  
UNIT 08/ LEVELS 2-15, 17-35



|              |                               |
|--------------|-------------------------------|
| Suite Area   | 1046.36 Sq.ft. / 97.21 Sq.m.  |
| Balcony Area | 56.08 Sq.ft. / 5.21 Sq.m.     |
| Total Area   | 1102.44 Sq.ft. / 102.42 Sq.m. |

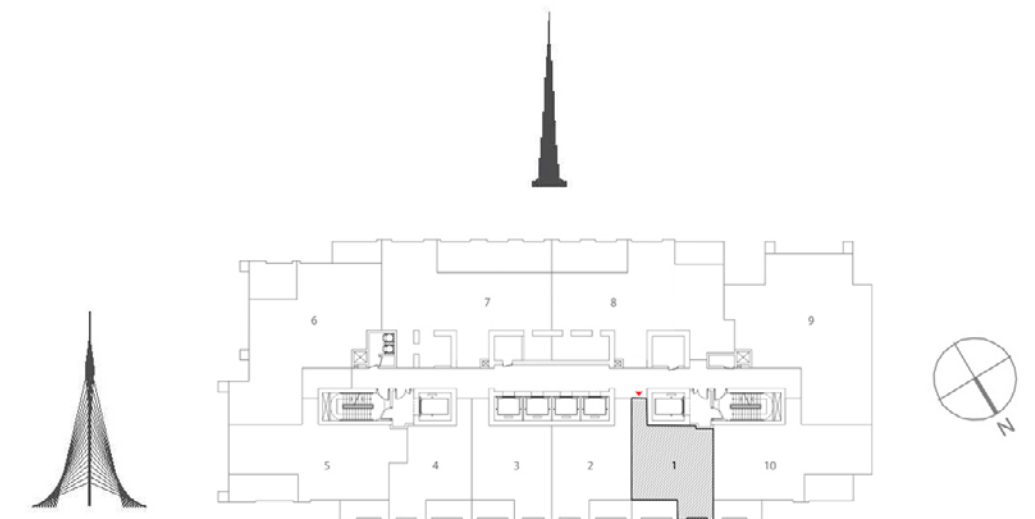




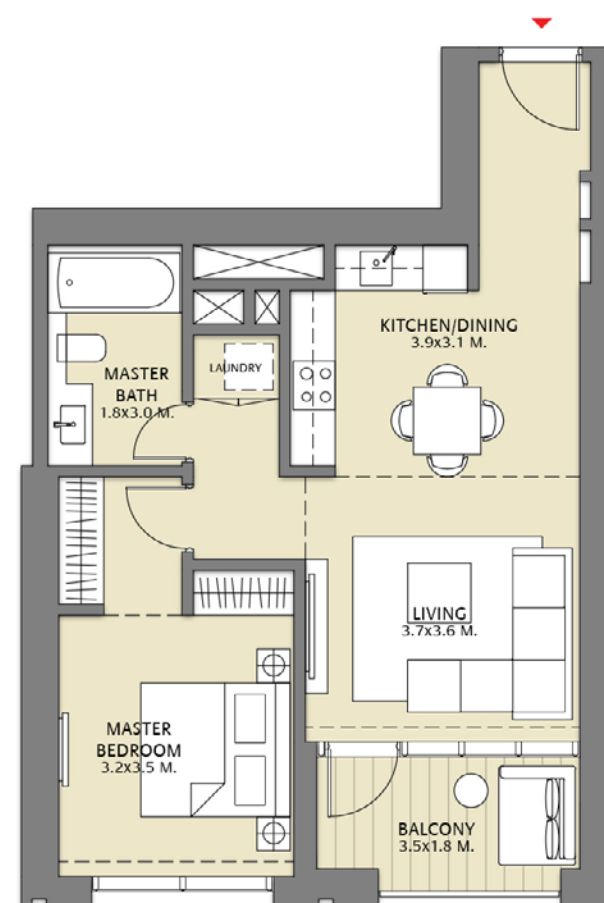


TOWER 1  
1 BEDROOM W/BALCONY  
UNIT 01/ LEVELS 37-53

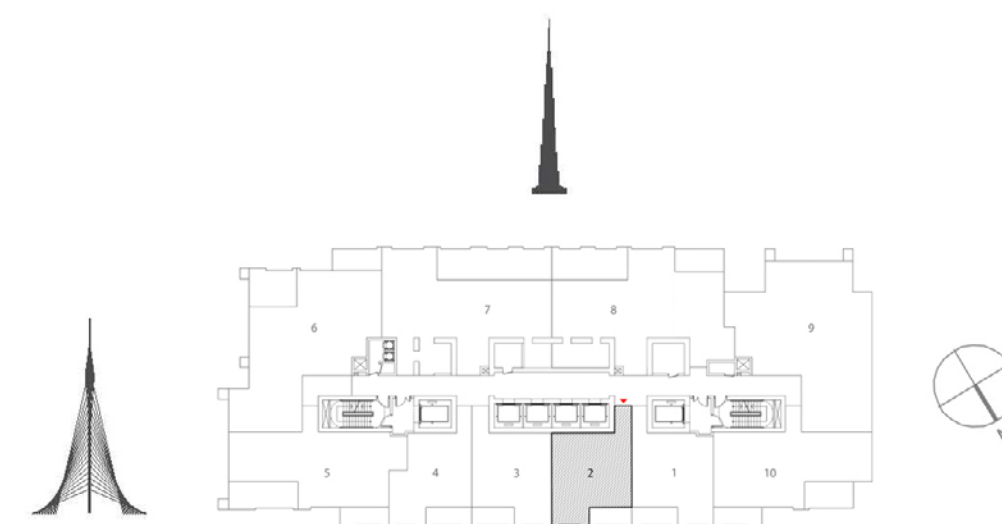
|              |                             |
|--------------|-----------------------------|
| Suite Area   | 597.18 Sq.ft. / 55.48 Sq.m. |
| Balcony Area | 84.28 Sq.ft. / 7.83 Sq.m.   |
| Total Area   | 681.46 Sq.ft. / 63.31 Sq.m. |

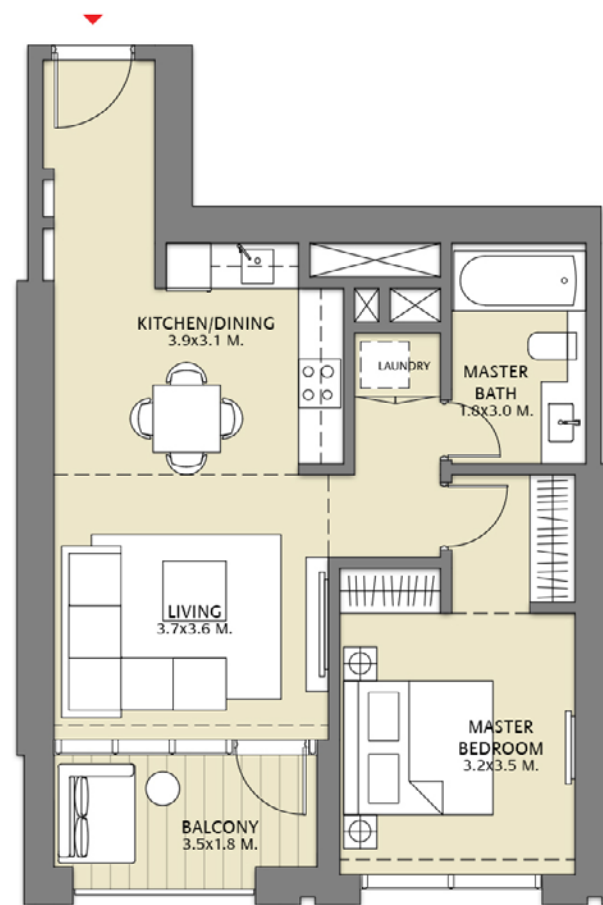


TOWER 1  
1 BEDROOM W/BALCONY  
UNIT 02/ LEVELS 37-53



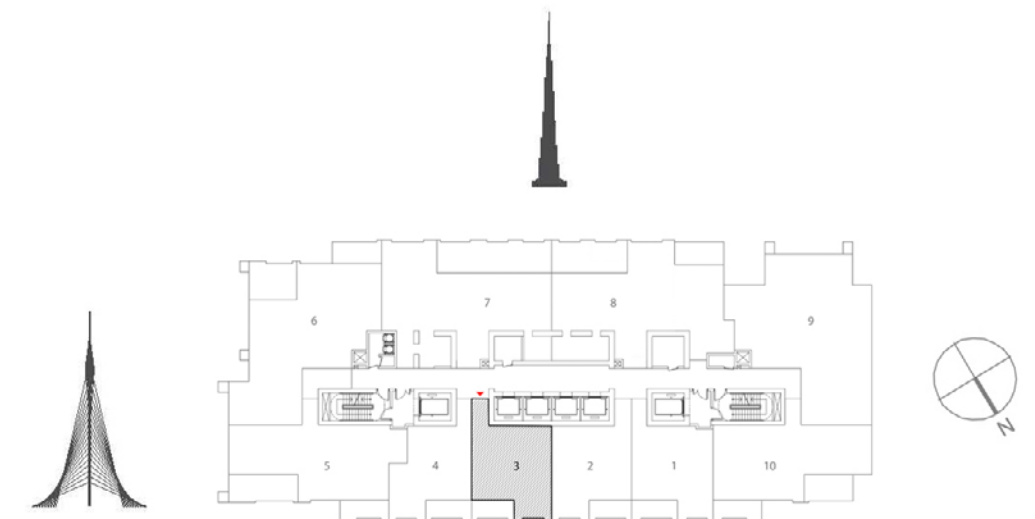
|              |                             |
|--------------|-----------------------------|
| Suite Area   | 658.75 Sq.ft. / 61.20 Sq.m. |
| Balcony Area | 76.42 Sq.ft. / 7.10 Sq.m.   |
| Total Area   | 735.18 Sq.ft. / 68.30 Sq.m. |

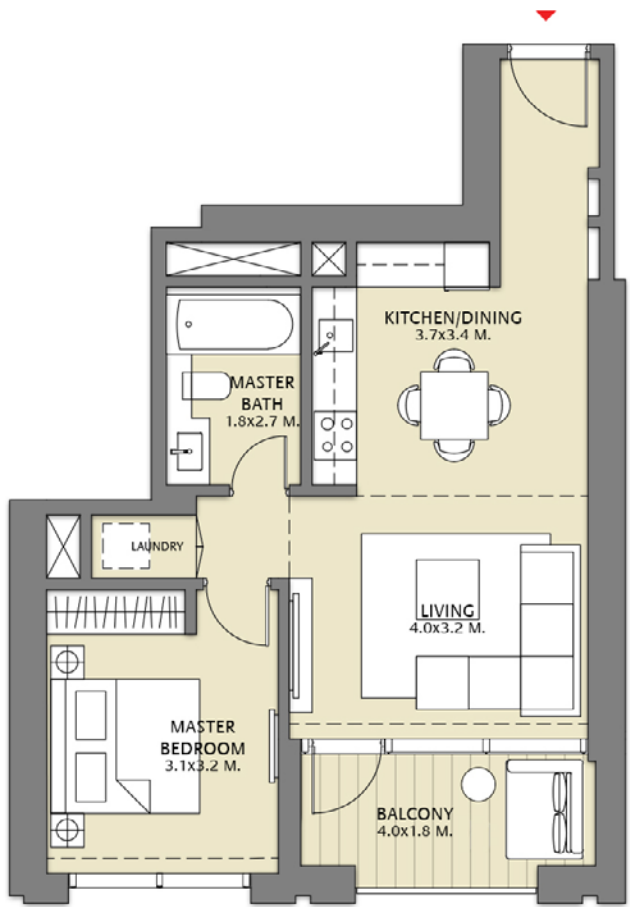




TOWER 1  
1 BEDROOM W/BALCONY  
UNIT 03/ LEVELS 37-53

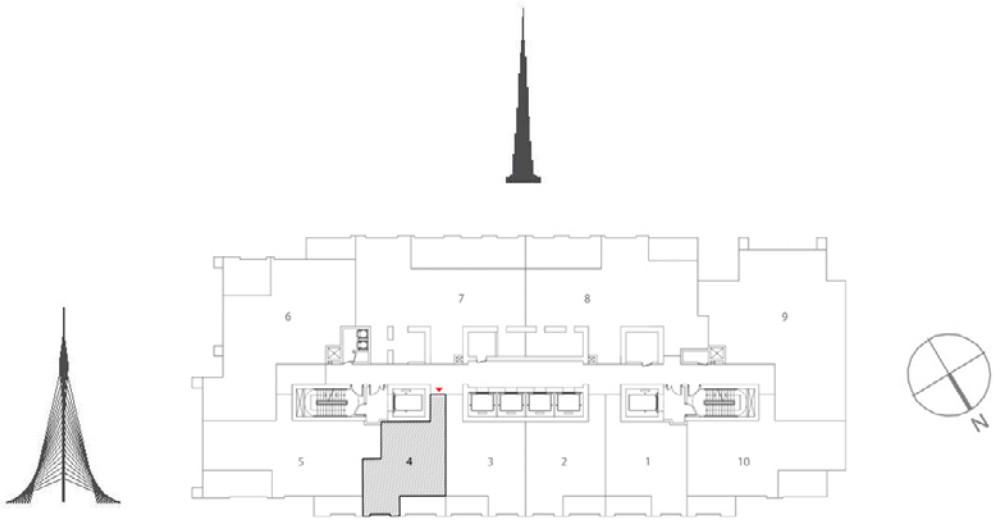
|              |                             |
|--------------|-----------------------------|
| Suite Area   | 658.75 Sq.ft. / 61.20 Sq.m. |
| Balcony Area | 76.42 Sq.ft. / 7.10 Sq.m.   |
| Total Area   | 735.18 Sq.ft. / 68.30 Sq.m. |





TOWER 1  
1 BEDROOM W/BALCONY  
UNIT 04/ LEVELS 37-53

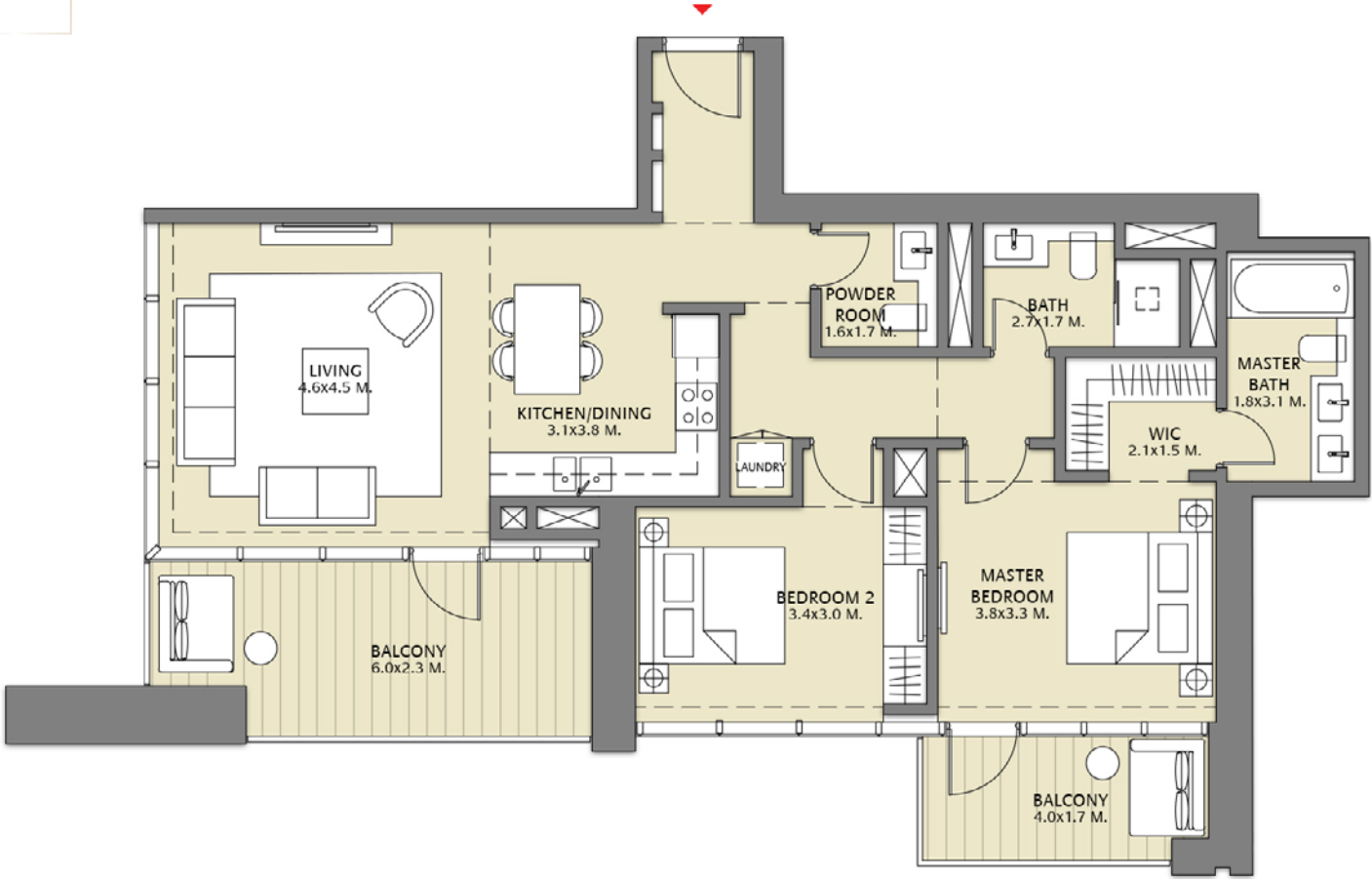
|              |                             |
|--------------|-----------------------------|
| Suite Area   | 597.18 Sq.ft. / 55.48 Sq.m. |
| Balcony Area | 84.28 Sq.ft. / 7.83 Sq.m.   |
| Total Area   | 681.46 Sq.ft. / 63.31 Sq.m. |



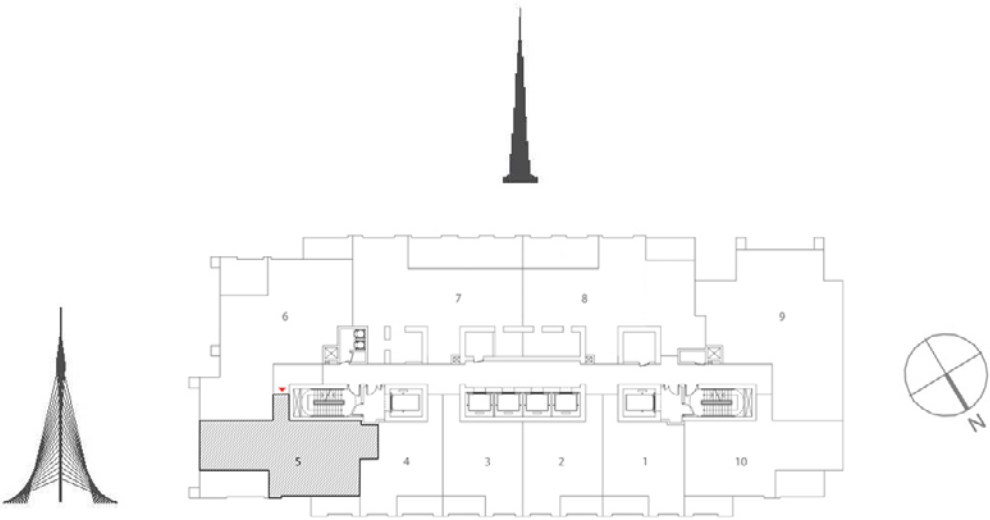
1. All dimensions are in imperial and metric, and measured to structural elements and exclude wall finishes and construction tolerances. 2. All materials, dimensions, and drawings are approximate only. 3. Information is subject to change without notice, at developer's absolute discretion. 4. Actual area may vary from the stated area. 5. Drawings not to scale. 6. All images used are for illustrative purposes only and do not represent the actual size, features, specifications, fittings, and furnishings. 7. The developer reserves the right to make revisions/alterations, at its absolute discretion, without any liability whatsoever.



TOWER 1  
2 BEDROOM W/BALCONY  
UNIT 05/ LEVELS 37-53

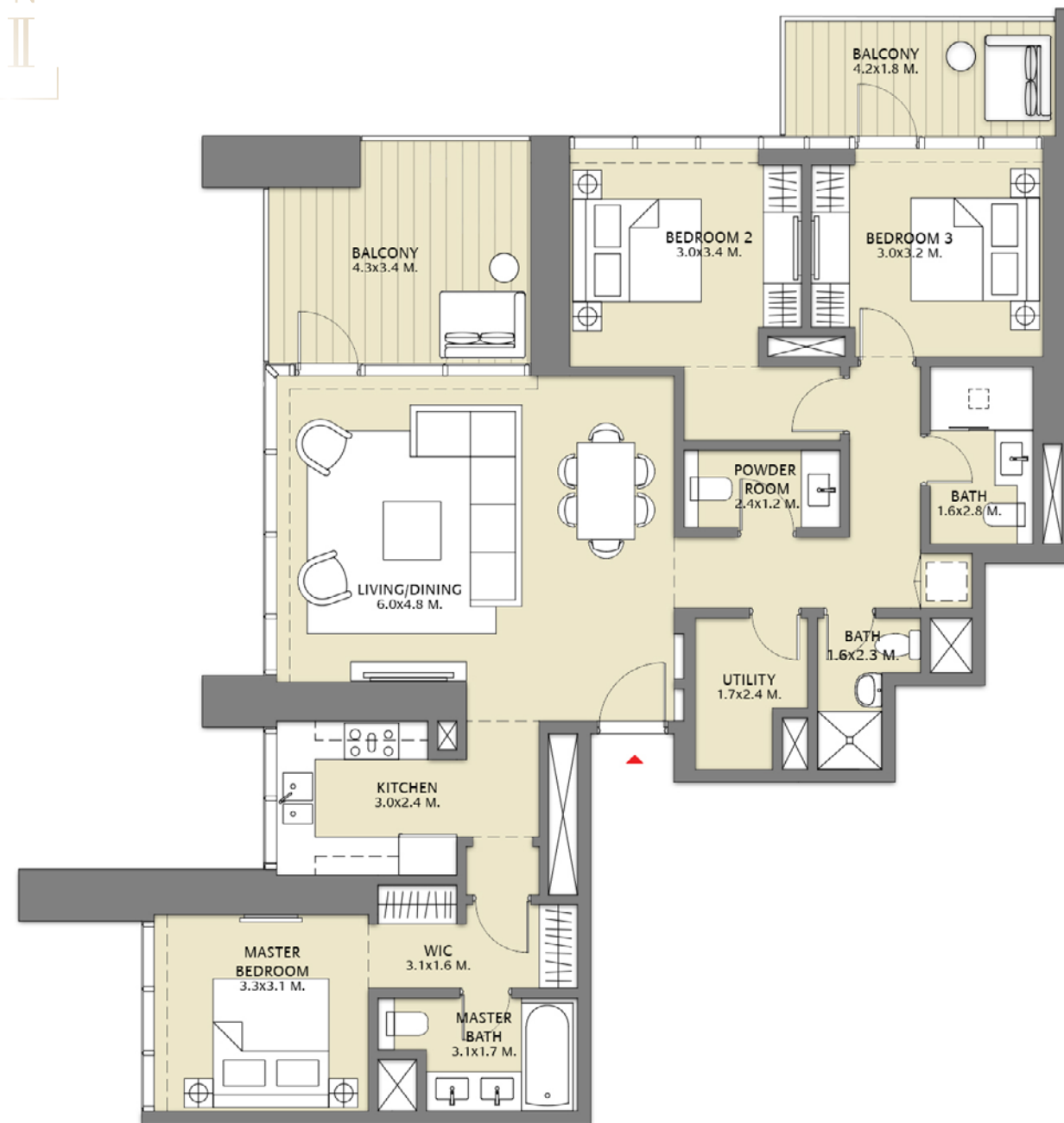


|              |                               |
|--------------|-------------------------------|
| Suite Area   | 1053.79 Sq.ft. / 97.90 Sq.m.  |
| Balcony Area | 250.69 Sq.ft. / 23.29 Sq.m.   |
| Total Area   | 1304.48 Sq.ft. / 121.19 Sq.m. |



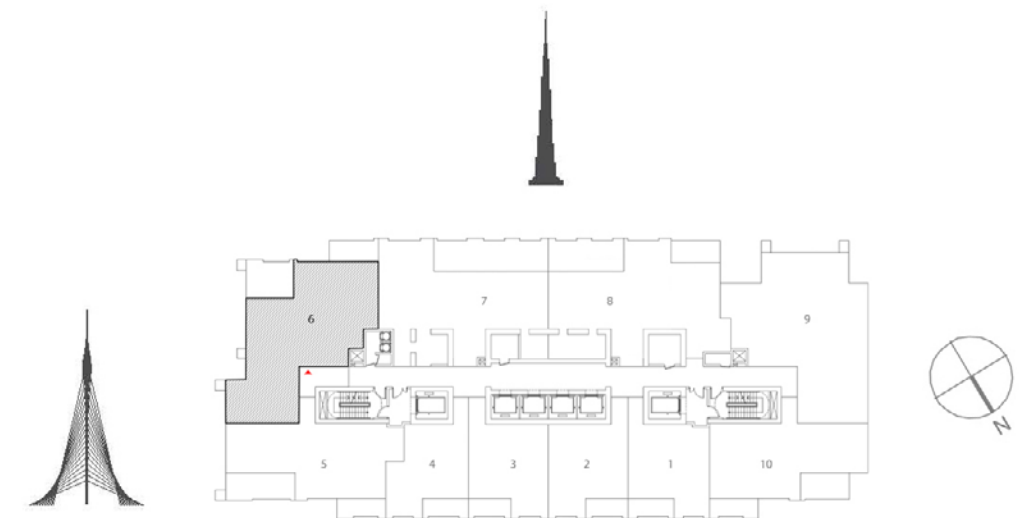
1. All dimensions are in imperial and metric, and measured to structural elements and exclude wall finishes and construction tolerances. 2. All materials, dimensions, and drawings are approximate only. 3. Information is subject to change without notice, at developer's absolute discretion. 4. Actual area may vary from the stated area. 5. Drawings not to scale. 6. All images used are for illustrative purposes only and do not represent the actual size, features, specifications, fittings, and furnishings. 7. The developer reserves the right to make revisions/alterations, at its absolute discretion, without any liability whatsoever.





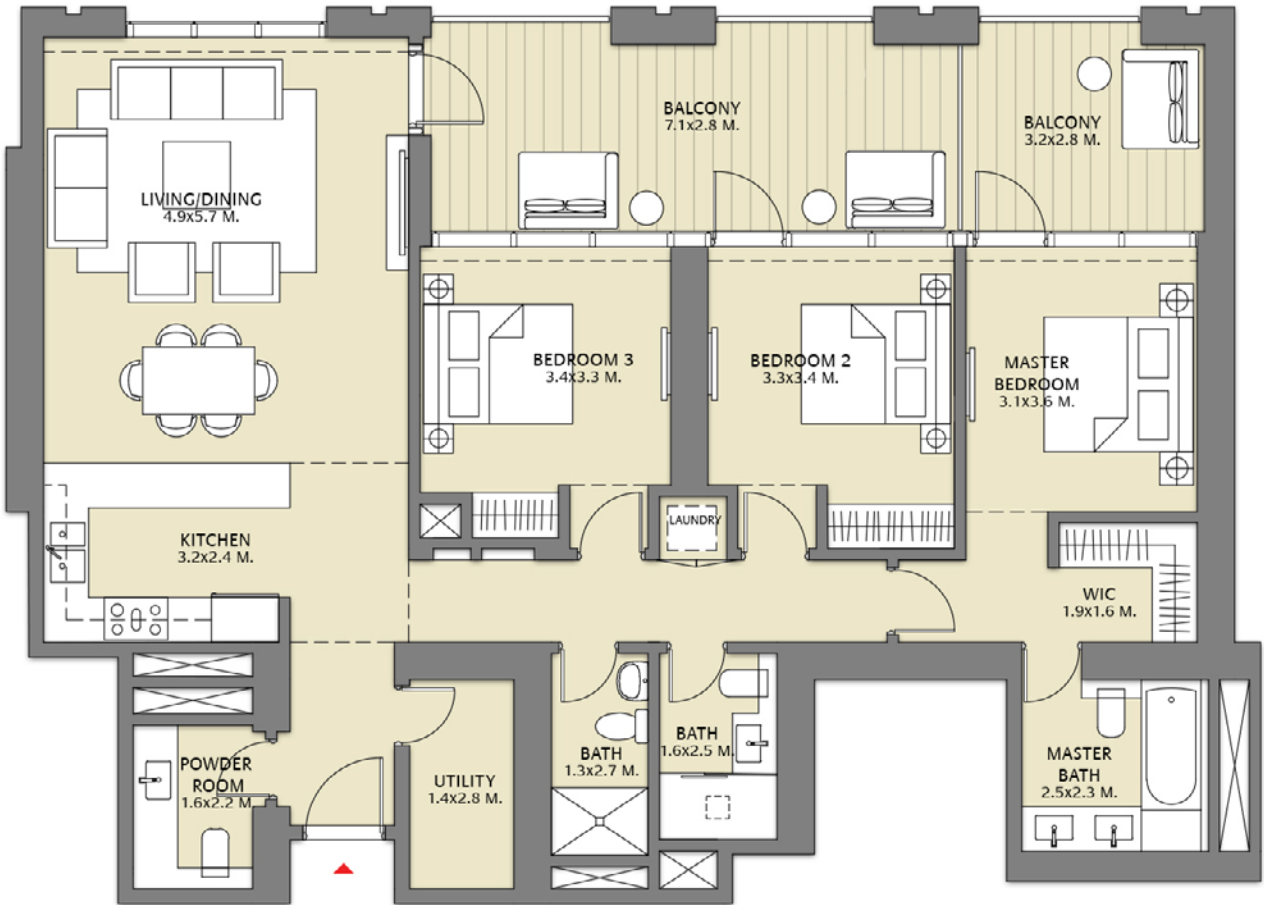
TOWER 1  
3 BEDROOM W/BALCONY  
UNIT 06/ LEVELS 37-53

|              |                               |
|--------------|-------------------------------|
| Suite Area   | 1359.91 Sq.ft. / 126.34 Sq.m. |
| Balcony Area | 255.75 Sq.ft. / 23.76 Sq.m.   |
| Total Area   | 1615.66 Sq.ft. / 150.10 Sq.m. |

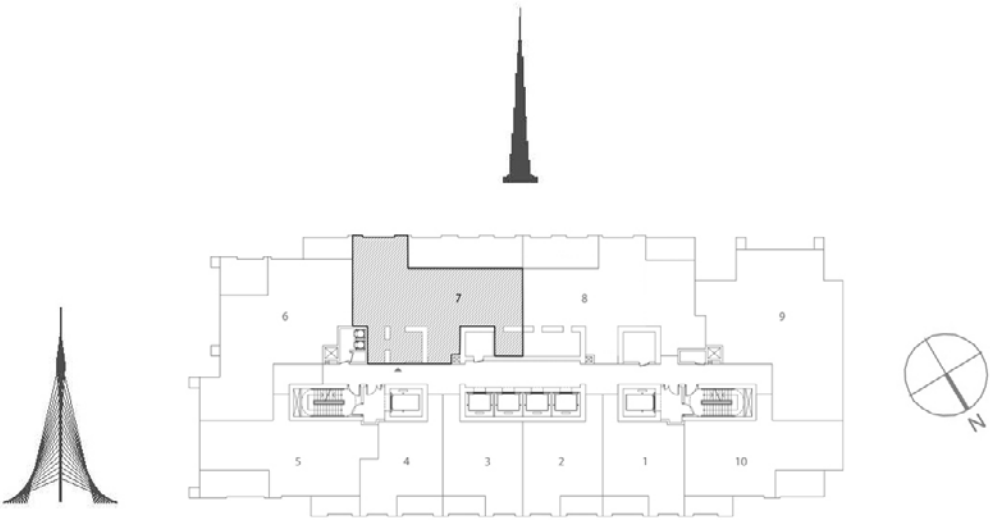




TOWER 1  
3 BEDROOM W/BALCONY  
UNIT 07/ LEVELS 37-53



|              |                               |
|--------------|-------------------------------|
| Suite Area   | 1453.24 Sq.ft. / 135.01 Sq.m. |
| Balcony Area | 325.61 Sq.ft. / 30.25 Sq.m.   |
| Total Area   | 1778.84 Sq.ft. / 165.26 Sq.m. |



1. All dimensions are in imperial and metric, and measured to structural elements and exclude wall finishes and construction tolerances. 2. All materials, dimensions, and drawings are approximate only. 3. Information is subject to change without notice, at developer's absolute discretion. 4. Actual area may vary from the stated area. 5. Drawings not to scale. 6. All images used are for illustrative purposes only and do not represent the actual size, features, specifications, fittings, and furnishings. 7. The developer reserves the right to make revisions/alterations, at its absolute discretion, without any liability whatsoever.





**056 650 6590**



**marketing@homes4life.ae**

Office 25 | Oasis Center | Sheikh Zayed Road | Dubai | UAE | P.O. Box 34542

**BUY | SELL | RENT | PROPERTY MANAGEMENT SERVICES**