

*CENTRAL
PARK*
CITY WALK

REIMAGINE THE URBAN JUNGLE



REIMAGINE THE URBAN JUNGLE

Big city living is by definition a fast-paced lifestyle set amongst high rises and bright lights. It is almost a blessing when you get to take refuge in a green space, most of the time away from the concrete surroundings. But what if we could blur the lines between urban and nature? Central Park at City Walk brings both of these worlds together. Premium homes and lush green landscapes set in the heart of Dubai create a true park lifestyle community that will make you reimagine what the urban jungle is.





MERAAS

Meraas is committed to creating and consistently delivering developments that strengthen Dubai's position as a global real estate investment destination of choice. Offering an extensive range of master developments, land, and property, Meraas continues its legacy of developing well-known destinations and prominent landmarks, creating well-designed and coveted lifestyle experiences.



Its cutting-edge portfolio comprises of leading developments across waterfront, urban, and suburban locations in Dubai, such as City Walk Residences, Bluewaters Residences, Nikki Beach Residences, BVLGARI Residences, Port de La Mer and Cherrywoods, to name a few. Meraas emphasises sophistication and innovation to offer best in class residential developments that appeal to a diverse customer base globally.

CITY WALK

City Walk is a creative lifestyle space to live, work and play in the heart of Dubai. Conceptualised by world-renowned designers, this high-end destination includes international retail offerings, upscale gourmet restaurants, world-class residences, and luxurious hotels, combining Dubai's love of out-of-the-box thinking with contemporary convenience. Built around movement, sharing, and community, the modern urban mix and easy connectivity make it one of the most prominent and recognisable neighbourhoods in Dubai.





CONNECTIVITY

Connected by a well-established road network, and located between Al Wasl Road and Sheikh Zayed Road, Central Park at City Walk is ideally placed for quick and convenient access to major landmarks in Dubai.

01

MINUTE FROM
CITY WALK MALL

05

MINUTES FROM
COCA-COLA ARENA

10

MINUTES TO
JUMEIRAH BEACH

15

MINUTES TO
BURJ AL ARAB

15

MINUTES TO
DUBAI INT. AIRPORT

15

MINUTES TO
LA MER BEACH

20

MINUTES TO
THE PALM JUMEIRAH

20

MINUTES TO
DUBAI MARINA

50

MINUTES TO
AL MAKTOUM AIRPORT



CENTRAL PARK AT CITY WALK

Imagine waking up in the heart of the city but opening your curtains and seeing nothing but lush greenery, with a backdrop of the magnificent Dubai skyline. Imagine stepping outside and being able to take part in countless activities all within your own private park. Imagine all of this being surrounded by some of the city's finest restaurants, world-class hotels, massive shopping centres and amazing leisure and entertainment outlets. You don't have to imagine anymore—live re-energised by nature in Central Park at City Walk.



AMENITIES

Central Park at City Walk features such a wide range of facilities and amenities that they cannot all be found in any community in the city. These include our list and many more:



Pools and water play areas | Kids play area | Running track | Dog park | Multi-use games and sports lawns | Tennis and squash courts | Half-court basketball | Skate-able landscape | Games tables | Outdoor gym and fitness station | Spa and sauna
Yoga and meditation areas | Dining outlets and retail stores | Function rooms | Nursery | Events area
Picnic pavilions | Outdoor barbeque areas

MYRTLE

Explore Myrtle, the newest addition to Central Park at City Walk. It features the community's signature design philosophy of blending modern architecture with lush nature. The bright interiors are complemented by terraces that offer amazing views of the community's verdant park — a truly unique place in the heart of the city. Choose from spacious 1 and 2-bedroom apartments.



*COUNTLESS ACTIVITIES
AND AMENITIES*



*FOR A BETTER
QUALITY OF LIFE*



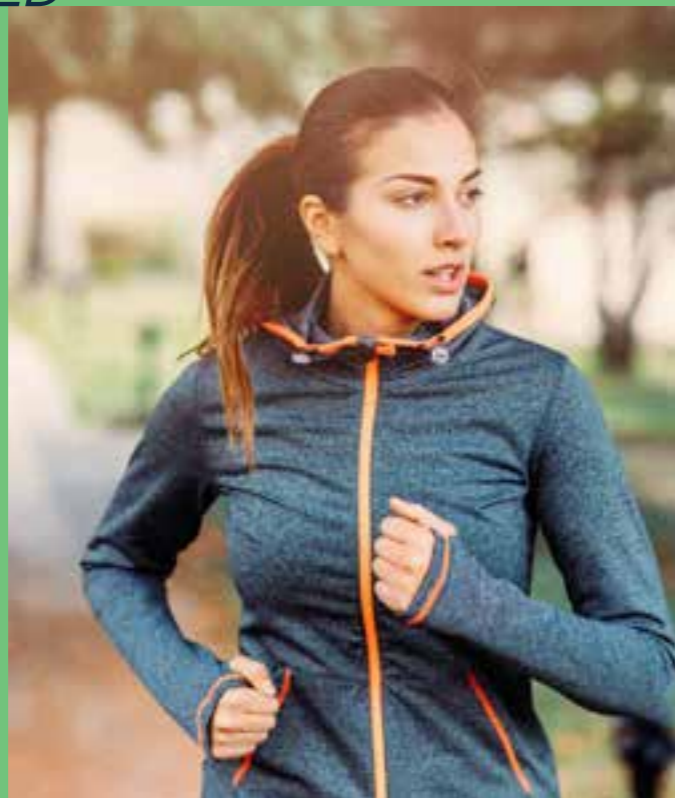


*ENJOY NATURE'S
SERENITY*



*WHILE
LIVING IN THE CITY*

*EVERYTHING
YOU NEED*



*JUST AROUND
THE CORNER*






BUY | SELL | RENT | PROPERTY MANAGEMENT SERVICES

GET IN TOUCH WITH US

 **+971 56 818 8610**

 **info@homes4life.ae**

 **Head Office:**
Office 25 | Oasis Center | Sheikh Zayed Road | Dubai | +971 4 338 7300

Branch Office:
Retail 1 | Safi Apartments | Town Square Dubai | Dubai | +971 4 398 1528