

ZAHRA TOWNHOUSES TYPE 1

3 BEDROOMS

TOTAL BUILT-UP AREA: 207.09 M² | 2229.1 FT²



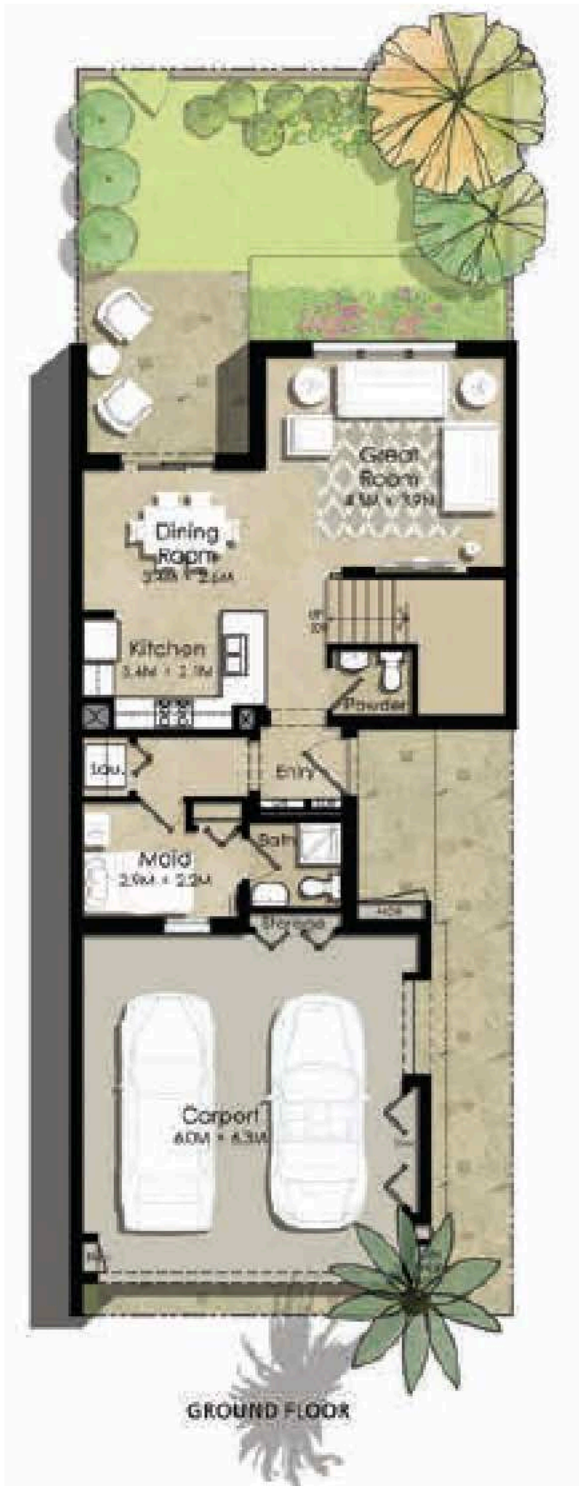
Disclaimer

1. All room dimensions are in metric and measured to structural elements and exclude wall finishes and construction tolerances. 2. All dimensions have been provided by our consultant architects. 3. All materials, dimensions, drawings features and amenities are approximate at the time of printing. 4. Actual area may vary from stated area. Drawings not to scale E&EO. The developer reserves the right to make revisions to the floor plans and any features, materials, dimensions, drawings and amenities mentioned in this brochure without notice.

ZAHRA TOWNHOUSES TYPE 2

3 BEDROOMS

TOTAL BUILT-UP AREA: 199.39 M² | 2146.2 FT²



Disclaimer
1. All room dimensions are in metric and measured to structural elements and exclude wall finishes and construction tolerances. 2. All dimensions have been provided by our consultant architects.
3. All materials, dimensions, drawings features and amenities are approximate at the time of printing. 4. Actual area may vary from stated area. Drawings not to scale E&EO. The developer reserves the right to make revisions to the floor plans and any features, materials, dimensions, drawings and amenities mentioned in this brochure without notice.

ZAHRA TOWNHOUSES TYPE 3

4 BEDROOMS

TOTAL BUILT-UP AREA: 225.03 M² | 2422.2 FT²



Ground Floor



First Floor

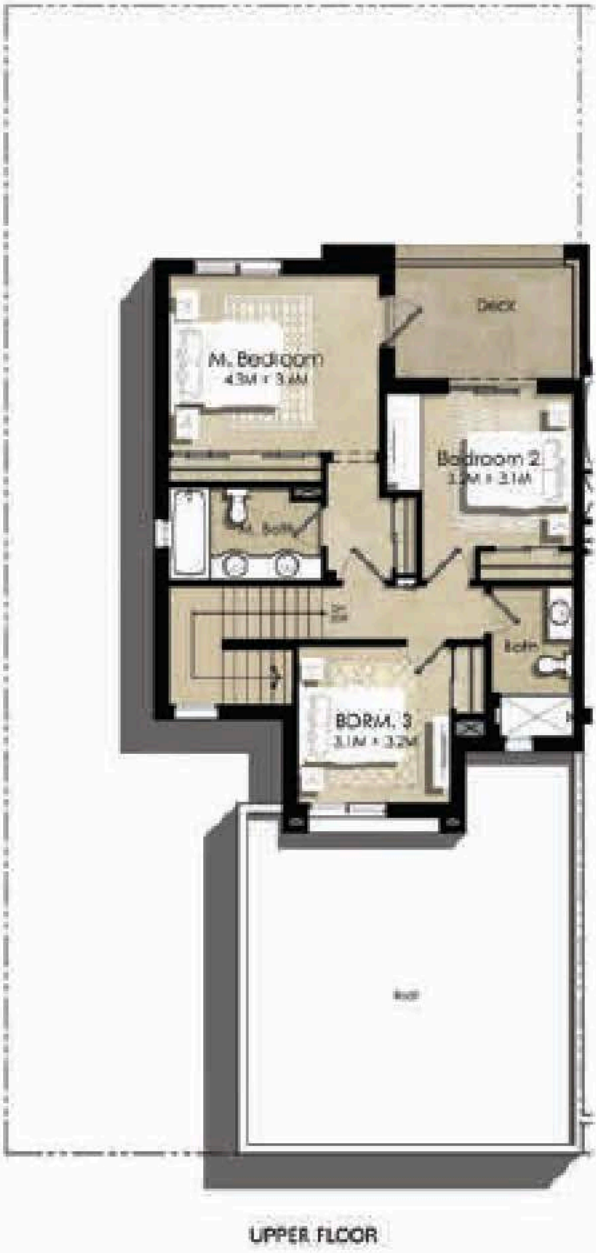
Disclaimer

1. All room dimensions are in metric and measured to structural elements and exclude wall finishes and construction tolerances. 2. All dimensions have been provided by our consultant architects. 3. All materials, dimensions, drawings features and amenities are approximate at the time of printing. 4. Actual area may vary from stated area. Drawings not to scale E&EO. The developer reserves the right to make revisions to the floor plans and any features, materials, dimensions, drawings and amenities mentioned in this brochure without notice.

ZAHRA TOWNHOUSES TYPE 4

4 BEDROOMS

TOTAL BUILT-UP AREA: 225.14 M² | 2423.4 FT²



Disclaimer
1. All room dimensions are in metric and measured to structural elements and exclude wall finishes and construction tolerances. 2. All dimensions have been provided by our consultant architects.
3. All materials, dimensions, drawings features and amenities are approximate at the time of printing. 4. Actual area may vary from stated area. Drawings not to scale E&EO. The developer reserves the right to make revisions to the floor plans and any features, materials, dimensions, drawings and amenities mentioned in this brochure without notice.



056 650 6590



marketing@homes4life.ae

Office 25 | Oasis Center | Sheikh Zayed Road | Dubai | UAE | P.O. Box 34542

BUY | SELL | RENT | PROPERTY MANAGEMENT SERVICES