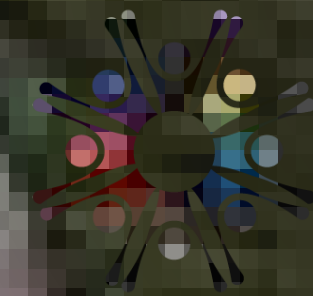


*Ivy Gardens*  
BY SAMANA DEVELOPERS

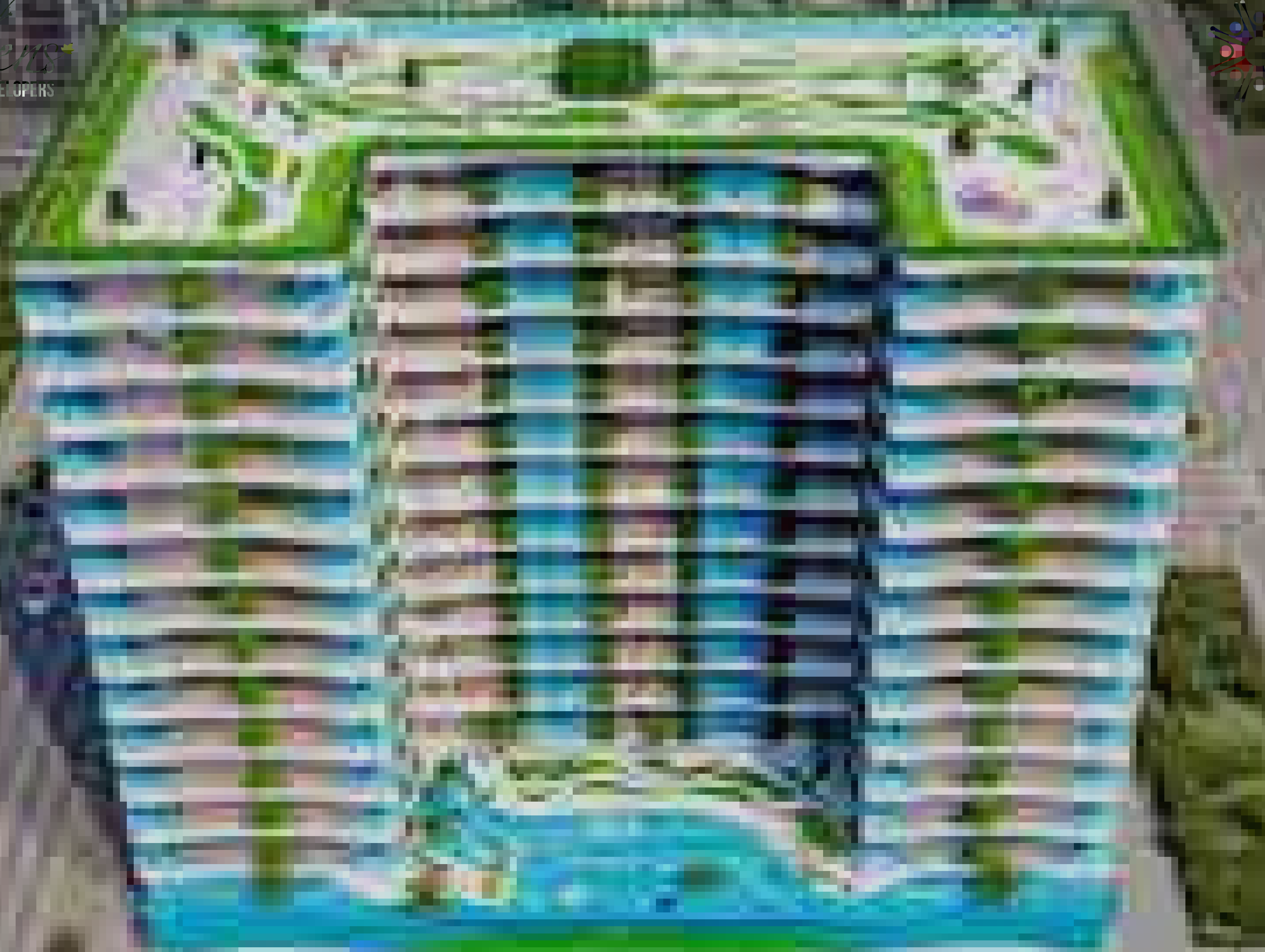
*Your*  
URBAN NEST

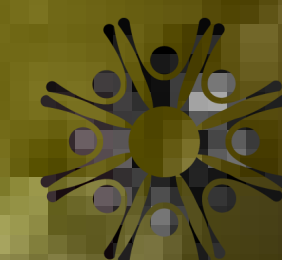


*Lily Gardens*  
BY SAMANA DEVELOPERS



**SAMANA**  
DEVELOPERS





**SAMANA**  
DEVELOPERS

ONE OF THE FASTEST-GROWING REAL ESTATE  
DEVELOPERS IN THE UAE



*Ivy Gardens*  
BY SAMANA DEVELOPERS

A PROJECT BY AN AWARD WINNING DEVELOPER



# Ivy Gardens

BY SAMANA DEVELOPERS

## Your URBAN NEST

*Welcome to IVY Gardens by SAMANA Developers, a unique and exciting new project that combines the best of city living with the tranquillity and beauty of nature. An exclusive community designed for those who appreciate the finer things in life and are looking for a sanctuary to call home.*

*Located in Dubai Land, IVY Gardens is designed to provide you with the ultimate in comfort, convenience, and sustainability.*

*IVY Gardens by SAMANA Developers is more than just a place to live, it's a lifestyle. With exceptional design, world-class amenities and a prime location, this development is the epitome of luxury living. Whether you're looking to invest in a permanent residence or a vacation home, it offers the perfect blend of style, comfort and convenience.*

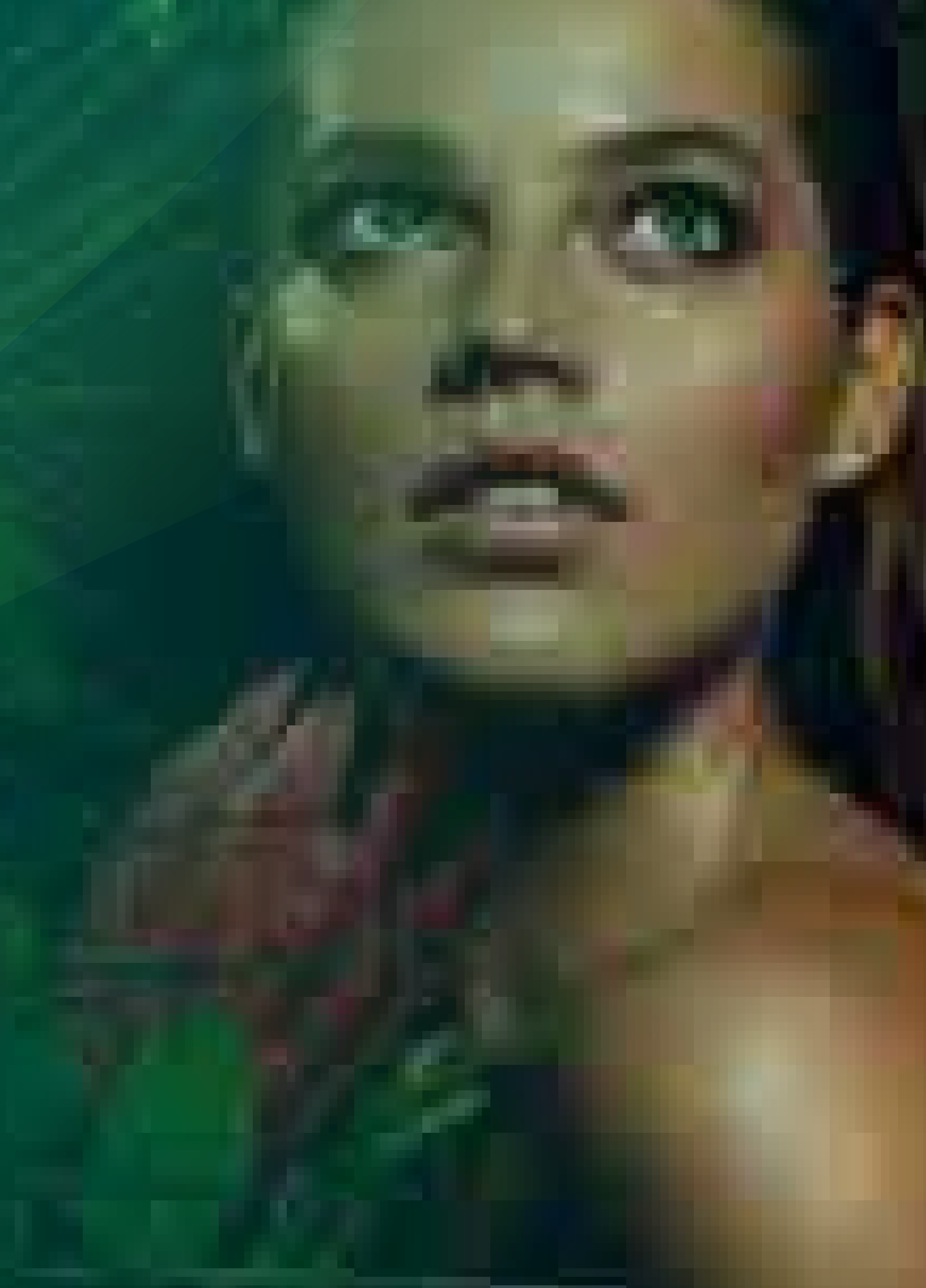
# DUBAI AS YOUR INVESTMENT HUB

*Dubai is a leading global investment hub, known for its strategic location, robust economy, and business-friendly environment. It has a diversified economy with a strong focus on real estate, tourism, technology, which makes it an ideal destination for investment.*

*The city's world-class infrastructure and amenities make it an attractive destination for both businesses and individuals. And with the exclusive IVY Gardens by SAMANA Developers, investors have a golden opportunity to invest and maximize their ROI.*













## WHY INVEST IN DUBAI?

- Among the Safest Cities in the World
- A Tourism Hub
- Business-friendly Environment
- Growing Real Estate Market
- Tax-free Environment
- Fast-growing Tourism Industry



# Let's have a look at some of the amazing features of Ivy Gardens



-   
Kids Pool
-   
Full Health Club Indoor & Outdoor Gym
-   
Greenery
-   
Rooftop Jogging Track
-   
Outdoor Cinema
-   
A Luxurious & Large Leisure Pool Deck
-   
Sauna & Steam Room
-   
Rooftop Barbeque Area
-   
Kids Area
-   
Main Pool
-   
Private Pools Inside Apartments
-   
Water Fall Feature

*Dive into Luxury*





*An Oasis of Tranquillity*



*Create Memories to Last a Lifetime*



*Step into a World of Luxury & Sophistication*



*Your Own Private Paradise*



*Perfectly in Sync with Modern Architecture*



*Make a Stunning Statement*



*Elevate Your Lifestyle*



*Opulence at its Finest*





*A Striking Reflection of Your Personality*



*Innovative & Timeless Design*



*Idyllic Homes, Seamlessly Integrated with Nature*



*The Ultimate Statement in Design*



*A Masterpiece of Contemporary Design & Style*



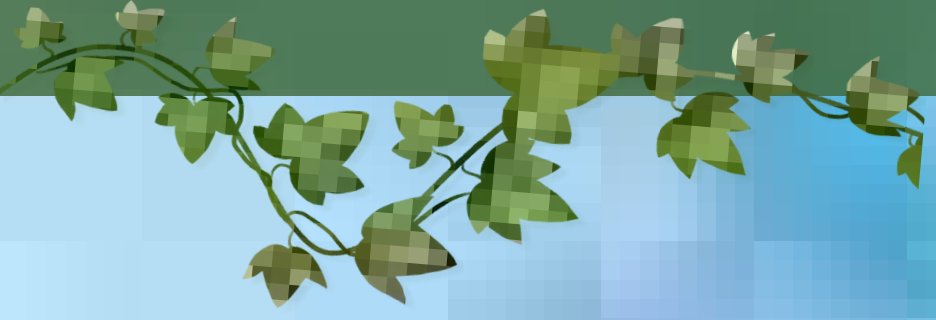
*An Expression of Your Lifestyle*



*An Architectural Brilliance*



*Where Style Meets Relaxation & Fun*





*Innovative & Timeless Design*

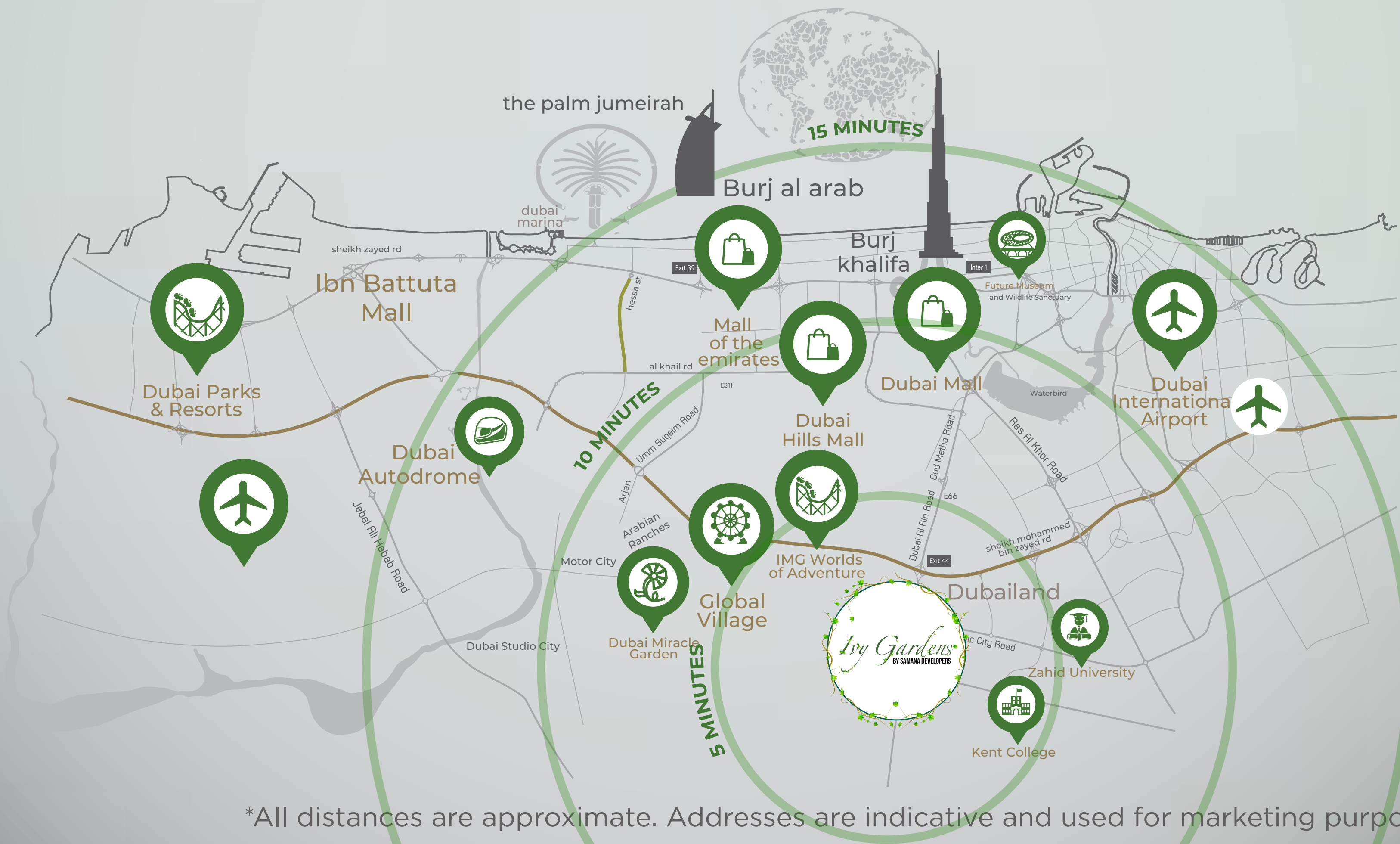


# Easy Access to All Facilities

SITUATED AT DLRC, IVY GARDENS BY SAMANA DEVELOPERS OFFERS THE PERFECT LOCATION AND HAS EVERYTHING NEEDED FOR EVERYDAY LIFE NEARBY, ALONG WITH EASY ACCESS TO MAJOR LOCATIONS. IT IS STRATEGICALLY LOCATED BETWEEN THE EMIRATES AND AL AIN HIGHWAYS.

- Al Barari* 10 minutes
- IMG World* 10 minutes
- Global Village* 13 minutes
- Meydan* 15 minutes
- Dubai Airport* 20 minutes
- Miracle Garden* 20 minutes

- Zayed University* 5 minutes
- Kent College* 5 minutes
- Future Museum* 15 minutes
- Dubai Downtown* 20 minutes
- Dubai Mall* 22 minutes
- Burj Al Khalifa* 22 minutes



\*All distances are approximate. Addresses are indicative and used for marketing purpose.




BUY | SELL | RENT | PROPERTY MANAGEMENT SERVICES

## GET IN TOUCH WITH US

 **+971 56 818 8610**

 **info@homes4life.ae**

 **Head Office:**  
Office 25 | Oasis Center | Sheikh Zayed Road | Dubai | +971 4 338 7300

**Branch Office:**  
Retail 1 | Safi Apartments | Town Square Dubai | Dubai | +971 4 398 1528