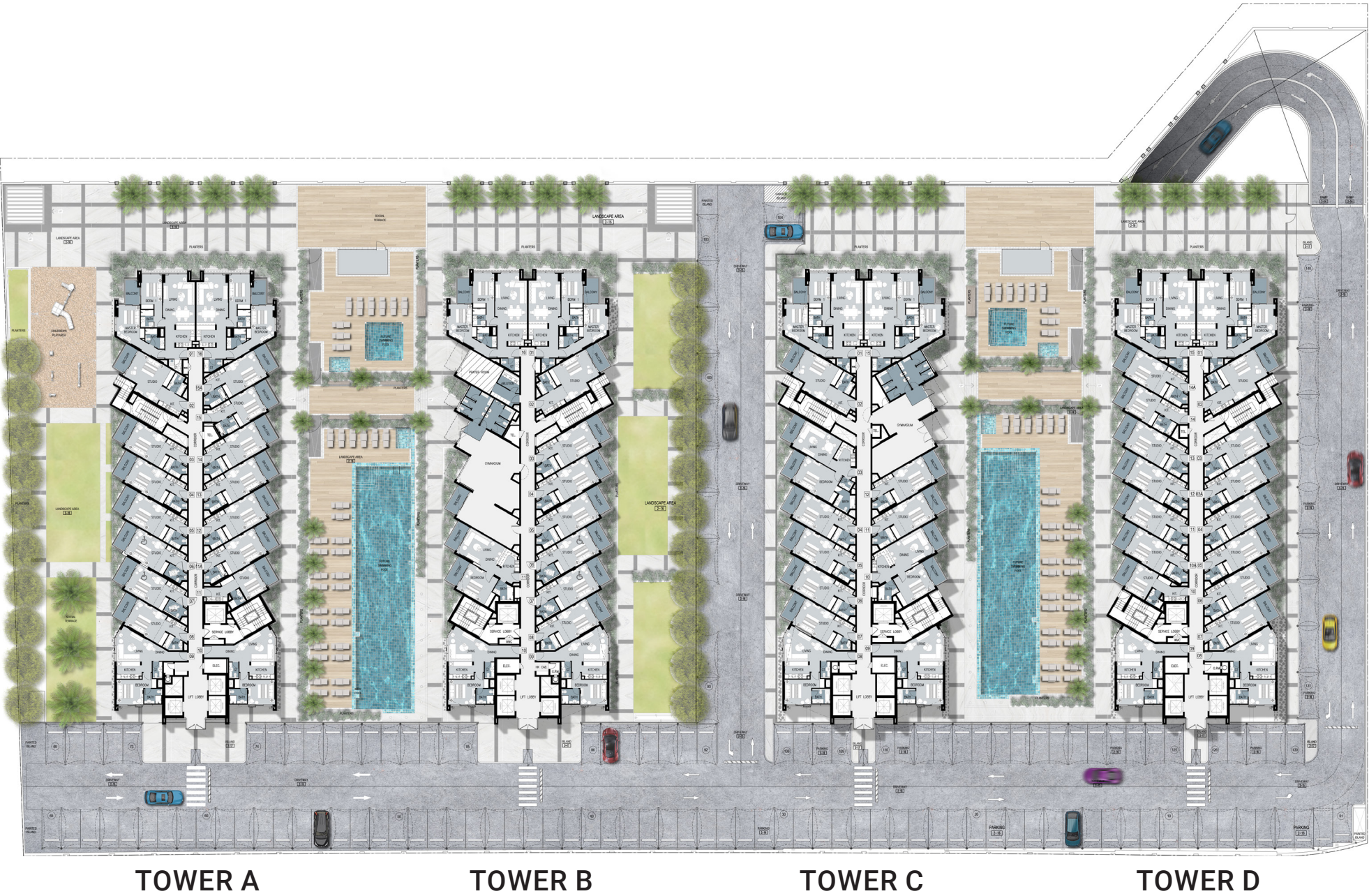


TYPICAL FLOOR PLANS

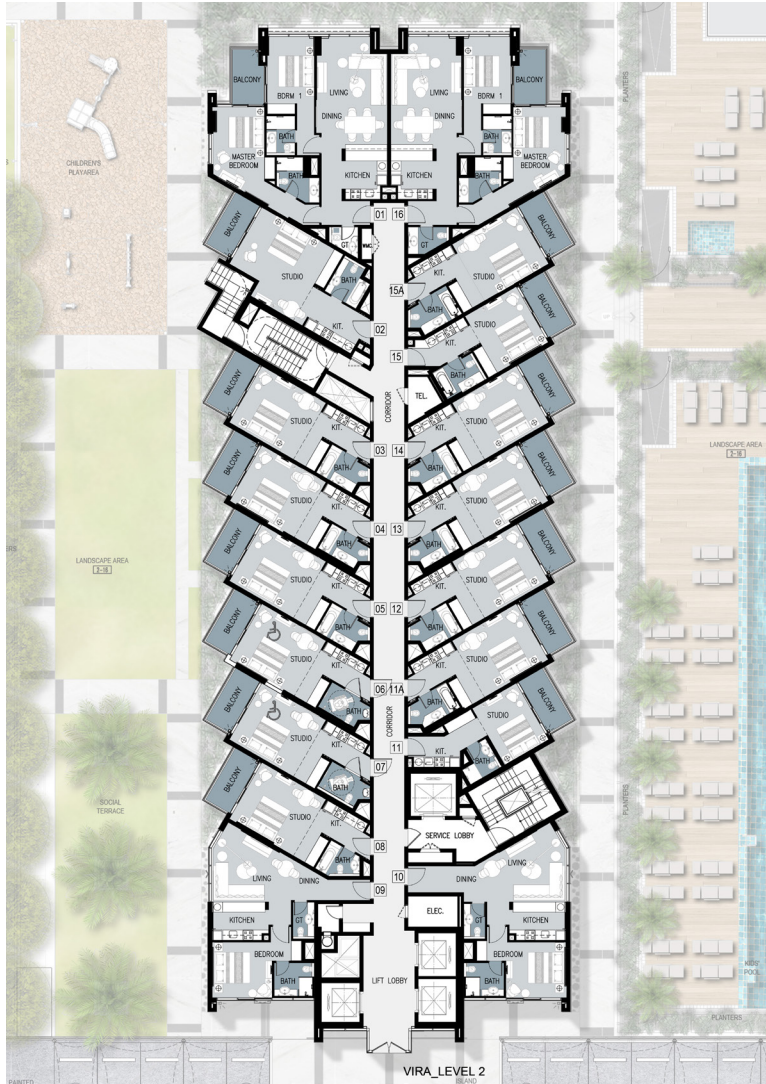


\*Unless stated above, all accessories and interior finishes such as wallpaper, chandeliers, furniture, electronics, white goods, curtains, hard and soft landscaping, pavements, features, swimming pool(s) and other elements displayed in the brochure, or within the show apartment / villa or between the plot boundary and the unit, are not part of the standard unit and exhibited for illustrative purposes only.

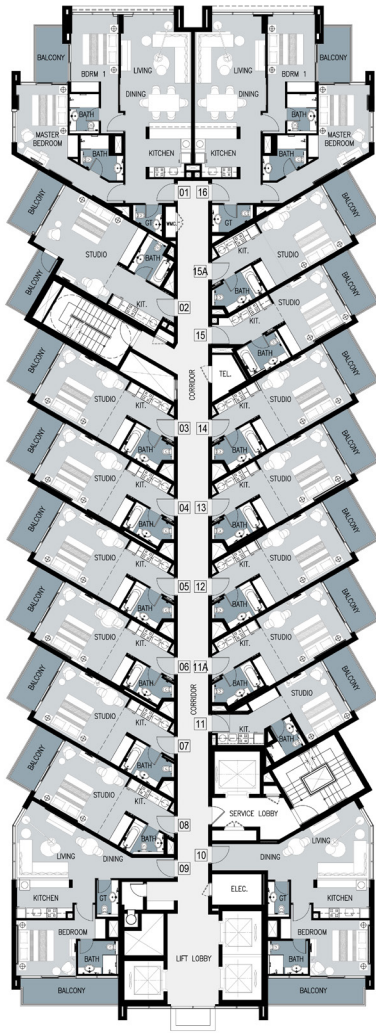


TYPICAL  
FLOOR PLANS

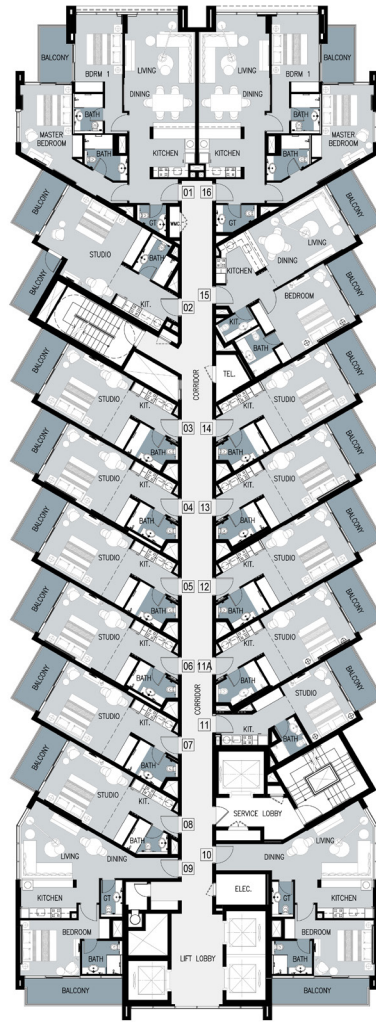
TOWER A  
RESIDENCES - TOWER



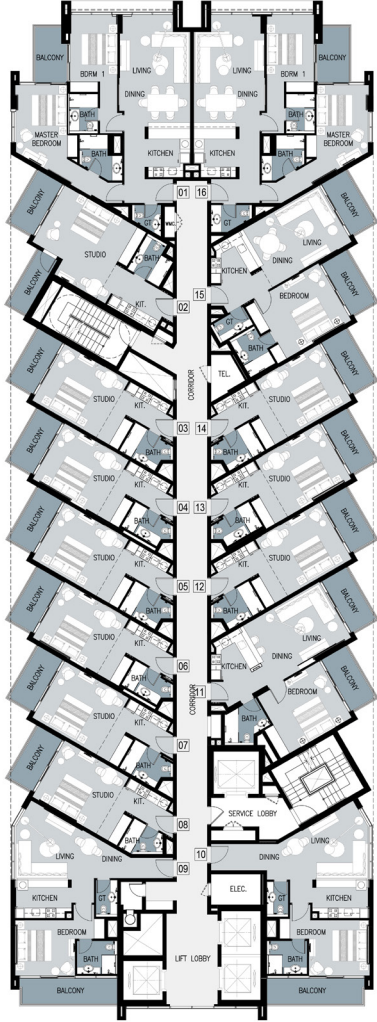
LEVEL 2



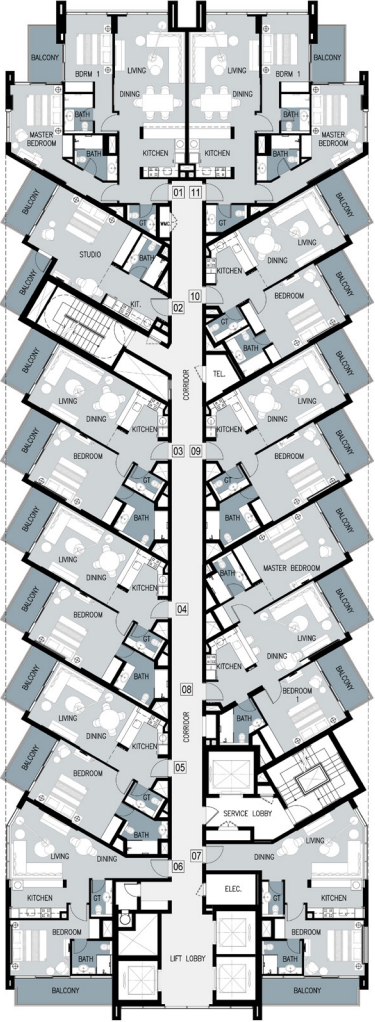
LEVELS 3 and 8



LEVELS 9, 12 and 13



LEVELS 10 and 11



LEVEL 14

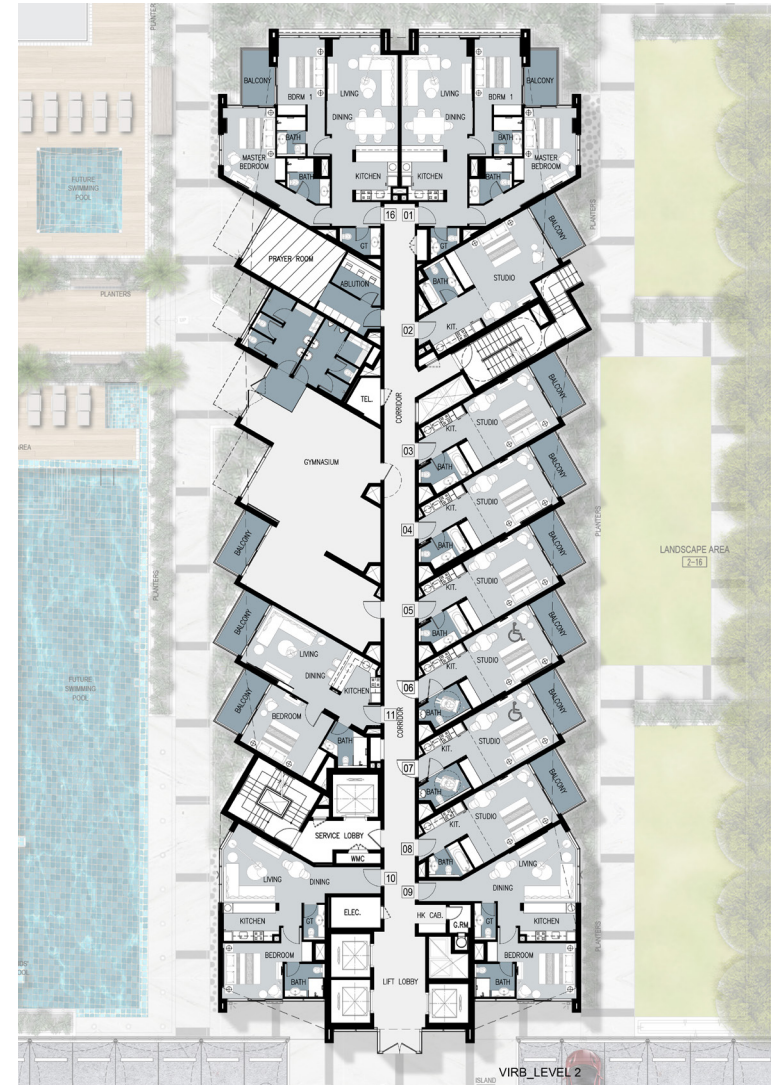
TYPICAL  
FLOOR PLANS

TOWER A  
RESIDENCES - TOWER

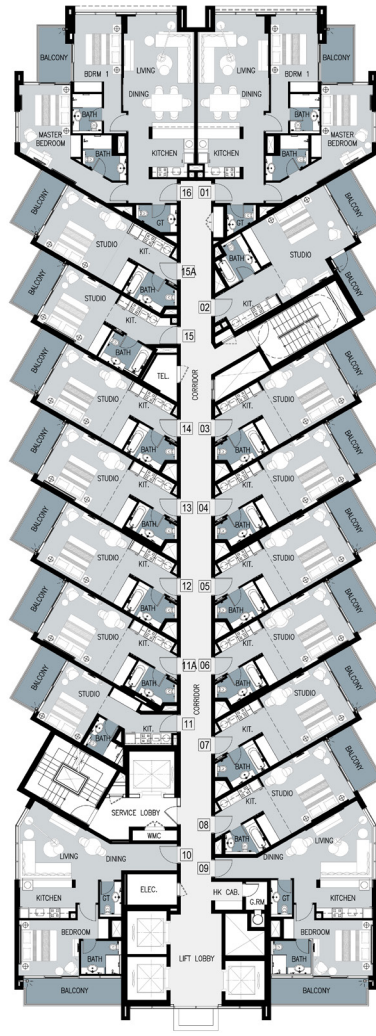


TYPICAL  
FLOOR PLANS

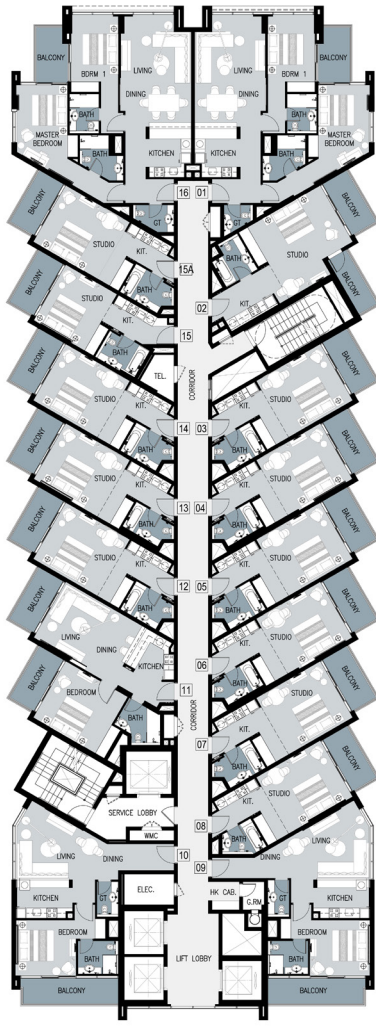
TOWER B  
RESIDENCES - TOWER



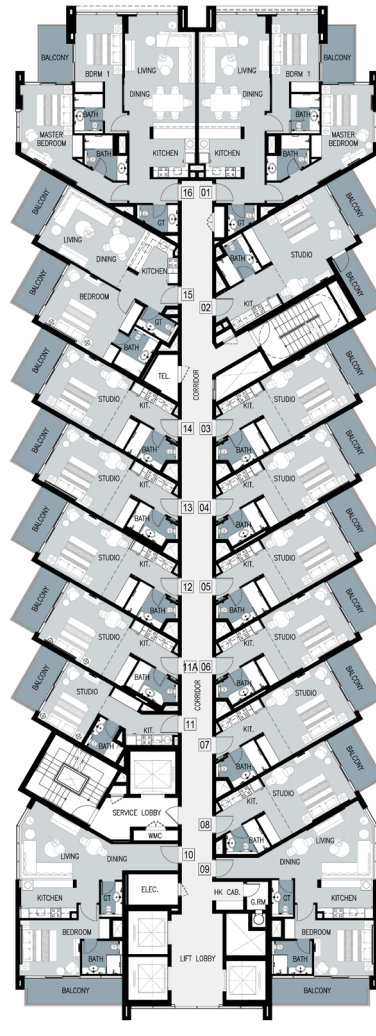
LEVEL 2



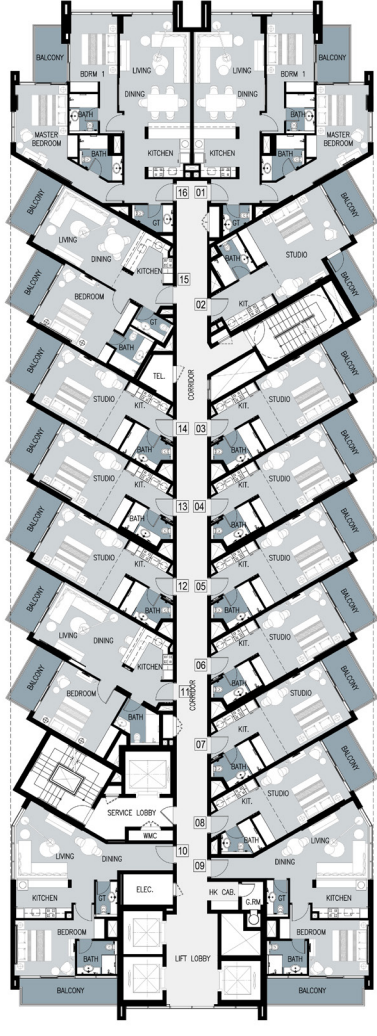
LEVELS 3, 4, 10 and 12



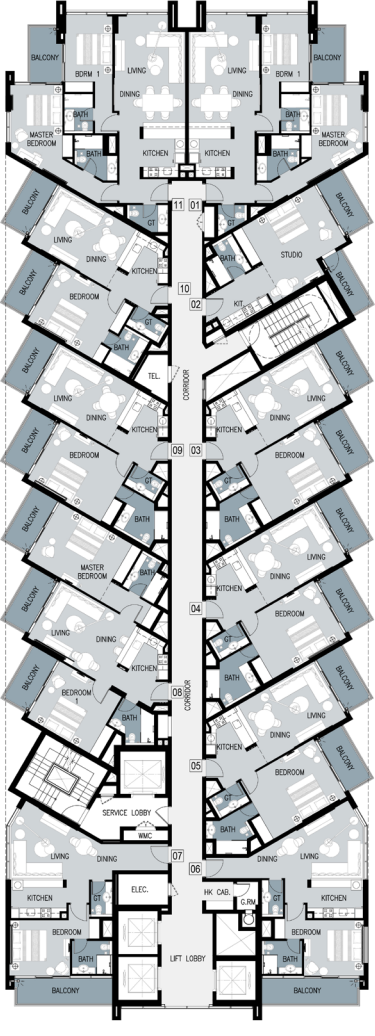
LEVELS 5, 6 and 8



LEVELS 7, 9 and 13



LEVEL 11



LEVEL 14

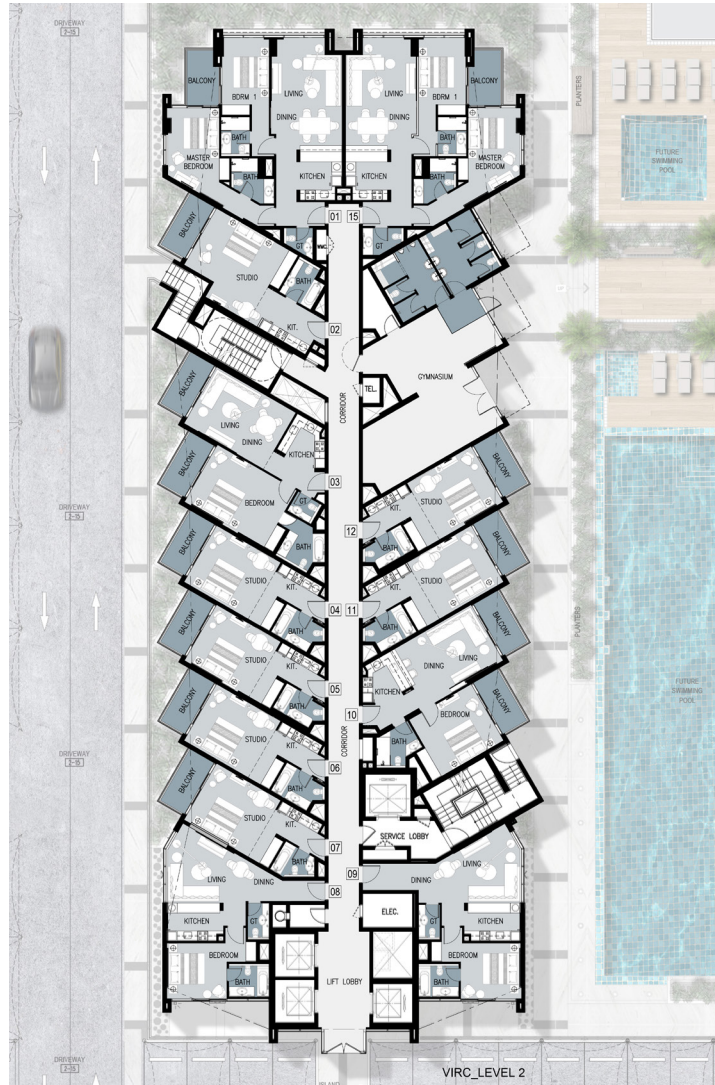
TYPICAL  
FLOOR PLANS

TOWER B  
RESIDENCES - TOWER

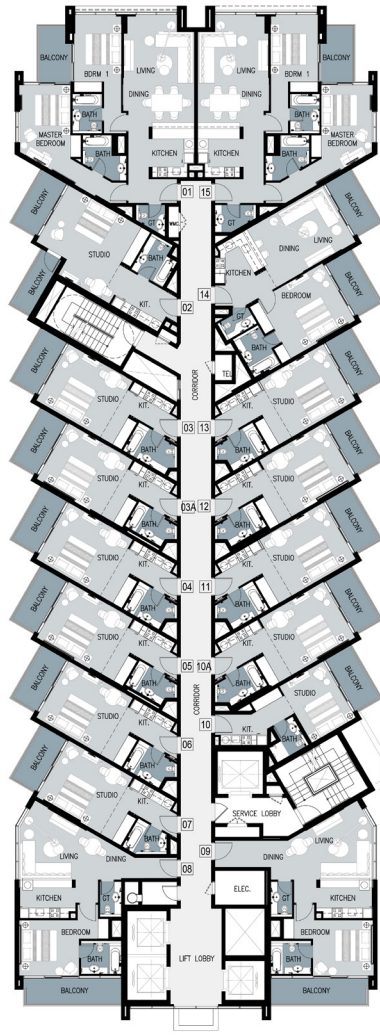


TYPICAL  
FLOOR PLANS

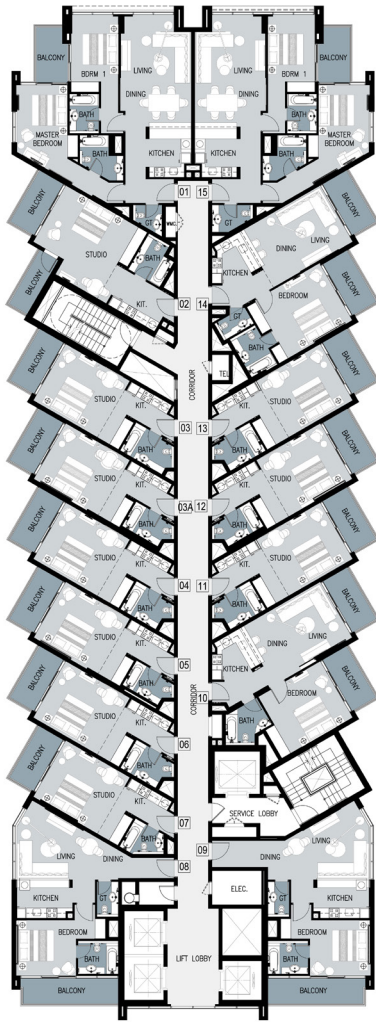
TOWER C  
SERVICED APARTMENTS



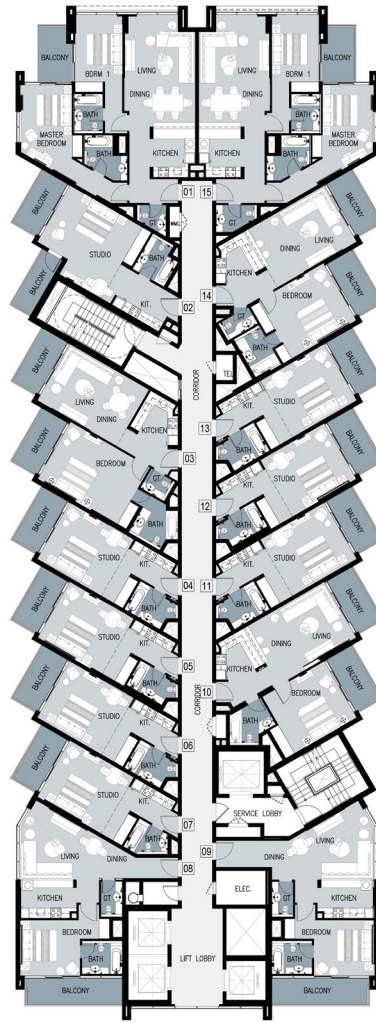
LEVEL 2



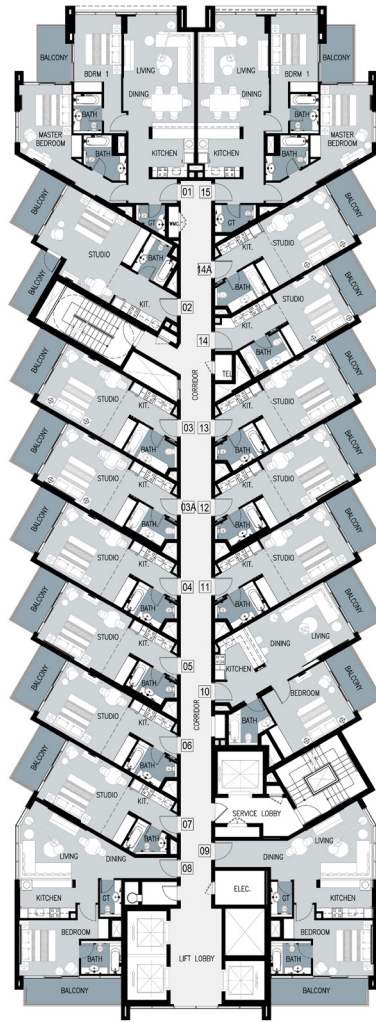
LEVEL 3



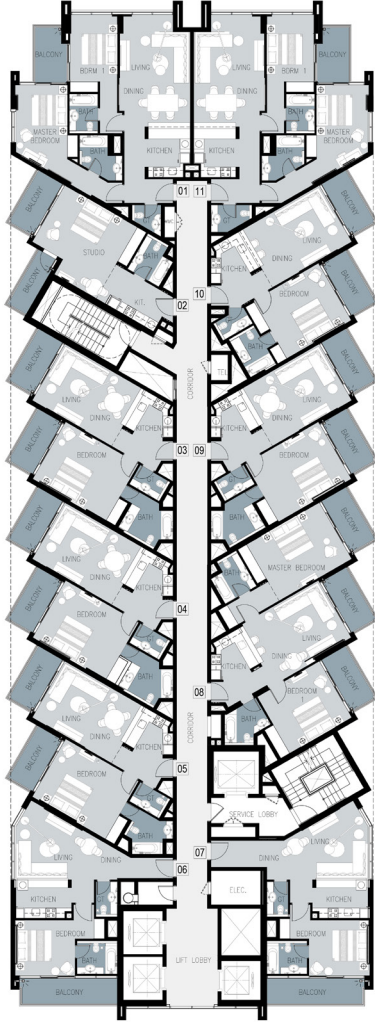
LEVELS 4, 5, 7, 9, 10 and 12



LEVELS 6, 11 and 13



LEVEL 8



LEVEL 14

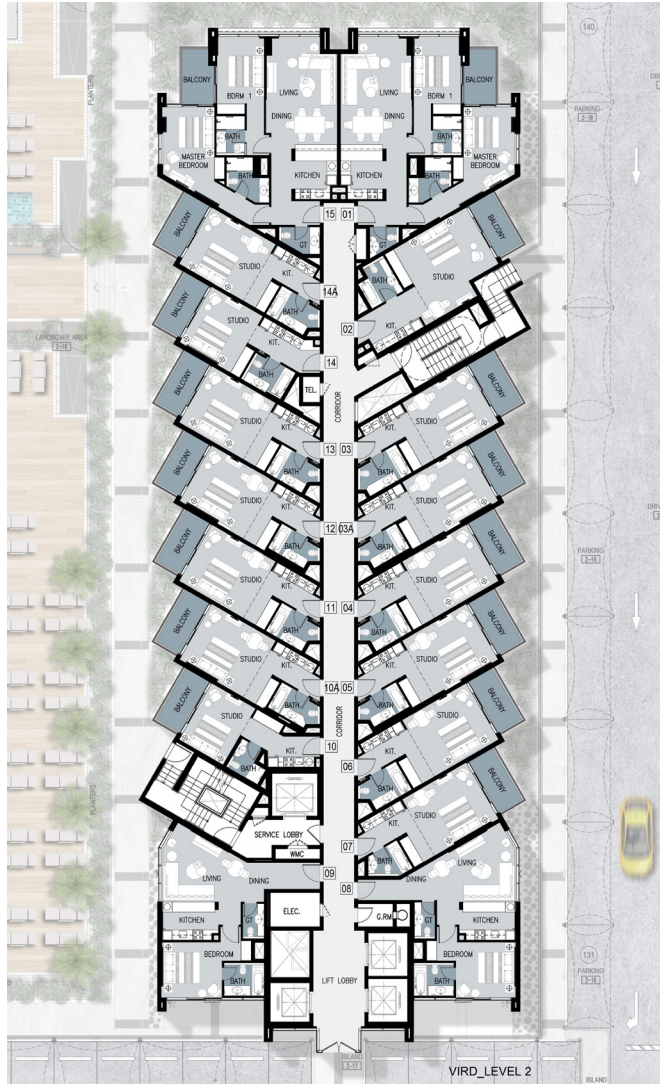
TYPICAL  
FLOOR PLANS

TOWER C  
SERVICED APARTMENTS

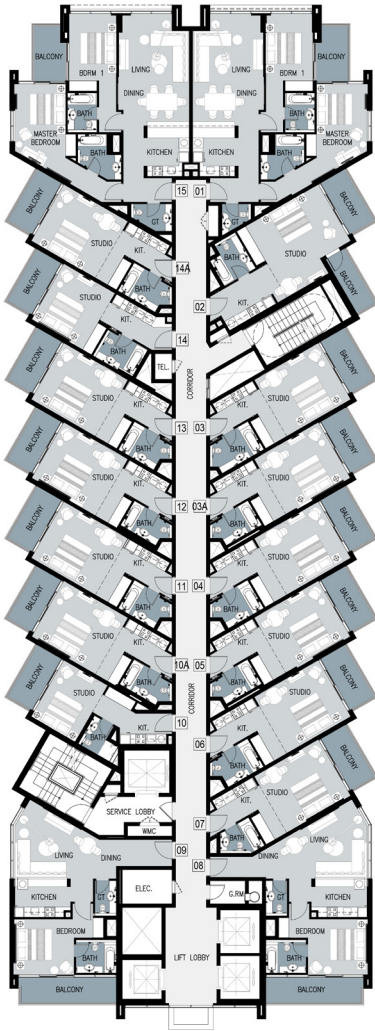


TYPICAL  
FLOOR PLANS

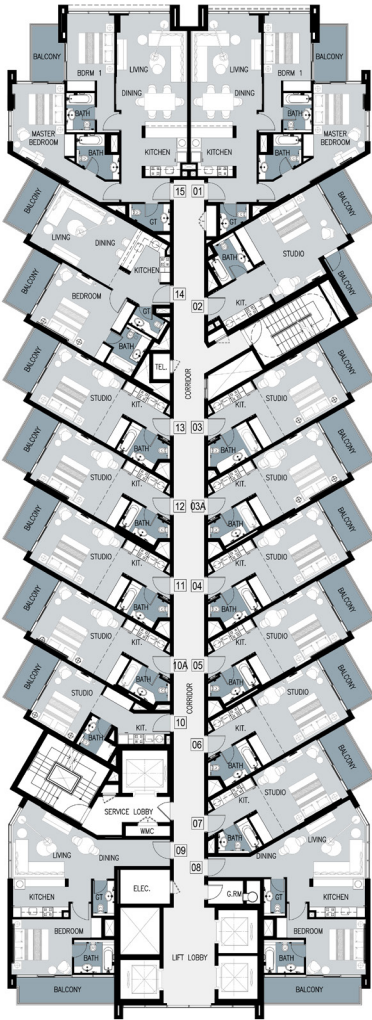
TOWER D  
SERVICED APARTMENTS



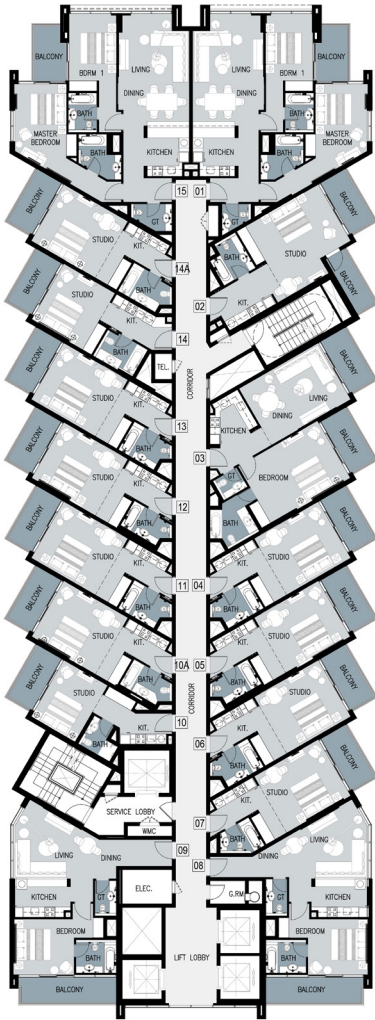
LEVEL 2



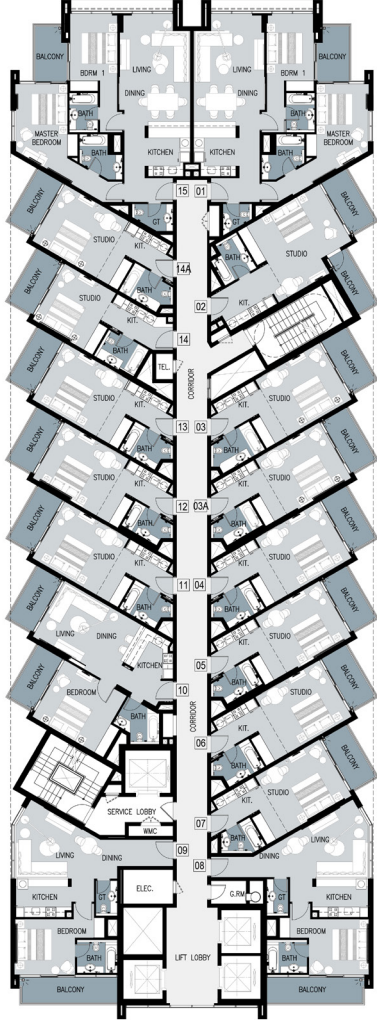
LEVELS 3, 4, 5, 6, 9 and 13



LEVEL 7



LEVEL 8



LEVELS 10, 11 and 12



LEVEL 14

TYPICAL  
FLOOR PLANS

TOWER D  
SERVICED APARTMENTS





056 818 8610



info@homes4life.ae

BUY | SELL | RENT | PROPERTY MANAGEMENT SERVICES

**Head Office:**

Office 25 | Oasis Center | Sheikh Zayed Road | Dubai | +971 4 338 7300

**Branch Office:**

Retail 1 | Safi Apartments | Town Square Dubai | Dubai | +971 4 398 1528