

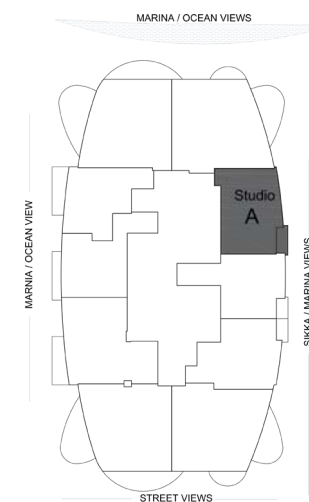
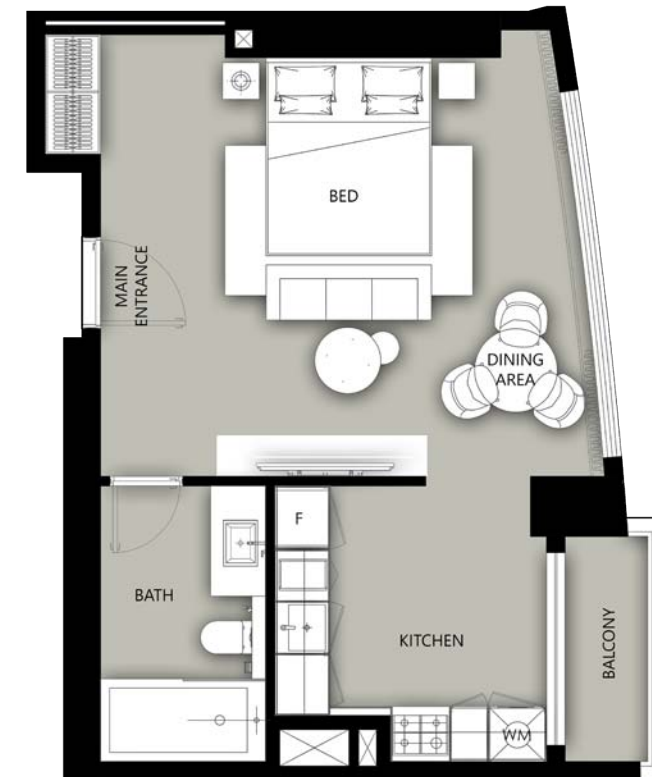
# LAYOUTS







## STUDIO TYPE APARTMENT TYPE - A



Area Details Type:  
A (Studio)

Level:  
2nd, 5th - 14th  
& 16th - 19th Floor

Living Area:  
471.36 sq. ft.

Balcony Area:  
33.03 sq. ft.

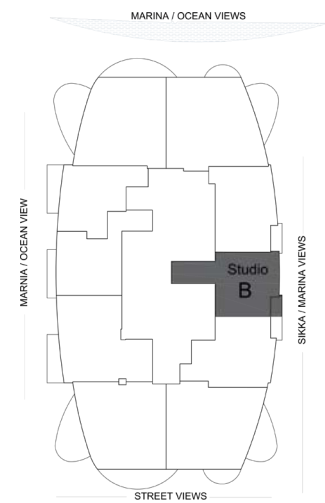
Total Area:  
504.40 sq. ft.

All room sizes and floor plan measurements are approximate and may vary per unit. Floor plans and unit features are preliminary and proposed only. The Developer reserves the right to modify, revise, change or withdraw any or all of the same in its sole and absolute discretion and without prior notice. Depictions of furnishings, finishes, appliances, counters, soffits, floor coverings and other matters of detail, including, without limitation, items of finish and decoration are conceptual only and are not necessarily included in each unit. Consult your Agreement and the Prospectus for items included with your unit.





## STUDIO TYPE APARTMENT TYPE - B



**Area Details Type:**  
B (Studio)

**Level:**  
2nd, 6th - 8th,  
14th, 17th & 19th Floor

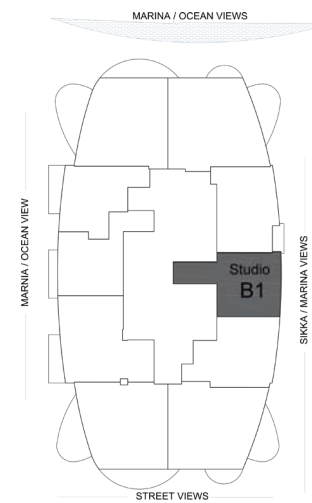
**Living Area:**  
464.09 sq. ft.

**Balcony Area:**  
26.28 sq. ft.

**Total Area:**  
490.37 sq. ft.

All room sizes and floor plan measurements are approximate and may vary per unit. Floor plans and unit features are preliminary and proposed only. The Developer reserves the right to modify, revise, change or withdraw any or all of the same in its sole and absolute discretion and without prior notice. Depictions of furnishings, finishes, appliances, counters, soffits, floor coverings and other matters of detail, including, without limitation, items of finish and decoration are conceptual only and are not necessarily included in each unit. Consult your Agreement and the Prospectus for items included with your unit.

## STUDIO TYPE APARTMENT TYPE - B1



**Area Details Type:**  
B1 (Studio)

**Level:**  
5th, 9th - 13th & 16th Floor

**Living Area:**  
483.62 sq. ft.

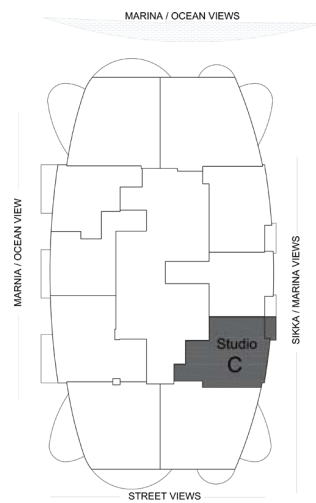
**Balcony Area:**  
-

**Total Area:**  
483.62 sq. ft.

All room sizes and floor plan measurements are approximate and may vary per unit. Floor plans and unit features are preliminary and proposed only. The Developer reserves the right to modify, revise, change or withdraw any or all of the same in its sole and absolute discretion and without prior notice. Depictions of furnishings, finishes, appliances, counters, soffits, floor coverings and other matters of detail, including, without limitation, items of finish and decoration are conceptual only and are not necessarily included in each unit. Consult your Agreement and the Prospectus for items included with your unit.



## STUDIO TYPE APARTMENT TYPE - C



### Area Details Type: C (Studio)

**Level:**  
2nd - 3rd, 6th - 8th, 14th - 15th  
& 17th - 19th Floor

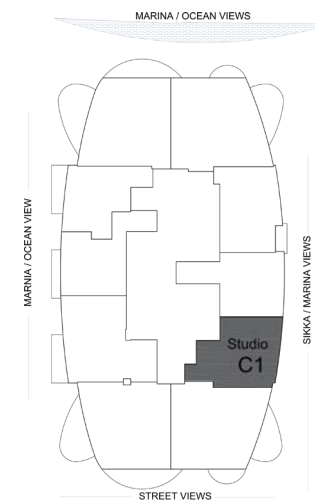
**Living Area:**  
485.00 sq. ft.

**Balcony Area:**  
24.69 sq. ft.

**Total Area:**  
509.69 sq. ft.

All room sizes and floor plan measurements are approximate and may vary per unit. Floor plans and unit features are preliminary and proposed only. The Developer reserves the right to modify, revise, change or withdraw any or all of the same in its sole and absolute discretion and without prior notice. Depictions of furnishings, finishes, appliances, counters, soffits, floor coverings and other matters of detail, including, without limitation, items of finish and decoration are conceptual only and are not necessarily included in each unit. Consult your Agreement and the Prospectus for items included with your unit.

## STUDIO TYPE APARTMENT TYPE - C1



### Area Details Type: C1 (Studio)

**Level:**  
5th, 9th - 13th & 16th Floor

**Living Area:**  
500.41 sq. ft.

**Balcony Area:**  
-

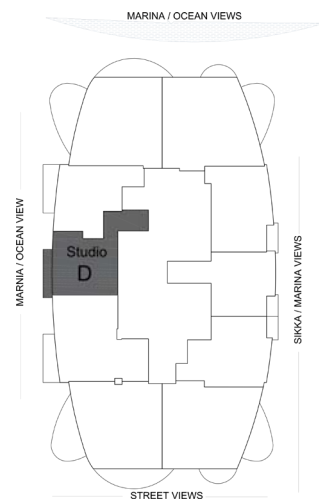
**Total Area:**  
500.41 sq. ft.

All room sizes and floor plan measurements are approximate and may vary per unit. Floor plans and unit features are preliminary and proposed only. The Developer reserves the right to modify, revise, change or withdraw any or all of the same in its sole and absolute discretion and without prior notice. Depictions of furnishings, finishes, appliances, counters, soffits, floor coverings and other matters of detail, including, without limitation, items of finish and decoration are conceptual only and are not necessarily included in each unit. Consult your Agreement and the Prospectus for items included with your unit.





## STUDIO TYPE APARTMENT TYPE - D



### Area Details Type: D (Studio)

**Level:**  
2nd, 3rd & 5th - 8th  
& 10th-19th Floor

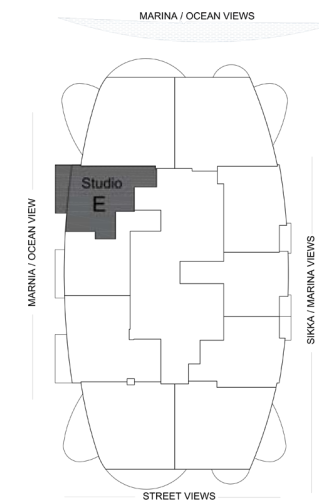
**Living Area:**  
465.41 sq. ft.

**Balcony Area:**  
41.55 sq. ft.

**Total Area:**  
506.96 sq. ft.

All room sizes and floor plan measurements are approximate and may vary per unit. Floor plans and unit features are preliminary and proposed only. The Developer reserves the right to modify, revise, change or withdraw any or all of the same in its sole and absolute discretion and without prior notice. Depictions of furnishings, finishes, appliances, counters, soffits, floor coverings and other matters of detail, including, without limitation, items of finish and decoration are conceptual only and are not necessarily included in each unit. Consult your Agreement and the Prospectus for items included with your unit.

## STUDIO TYPE APARTMENT TYPE - E



### Area Details Type: E (Studio)

**Level:**  
2nd, 3rd & 5th - 8th  
& 10th-19th Floor

**Living Area:**  
414.01 sq. ft.

**Balcony Area:**  
63.07 sq. ft.

**Total Area:**  
477.08 sq. ft.

All room sizes and floor plan measurements are approximate and may vary per unit. Floor plans and unit features are preliminary and proposed only. The Developer reserves the right to modify, revise, change or withdraw any or all of the same in its sole and absolute discretion and without prior notice. Depictions of furnishings, finishes, appliances, counters, soffits, floor coverings and other matters of detail, including, without limitation, items of finish and decoration are conceptual only and are not necessarily included in each unit. Consult your Agreement and the Prospectus for items included with your unit.





ACTUAL VIEW  
FROM CONDOR MARINA STAR RESIDENCES

## ONE-BEDROOM APARTMENT TYPE - A



Area Details Type:  
A (1Bedroom)

Level:  
1st - 3rd & 5th - 19th Floor

Living Area:  
701.38 sq. ft.

Balcony Area:  
139.29 sq. ft.

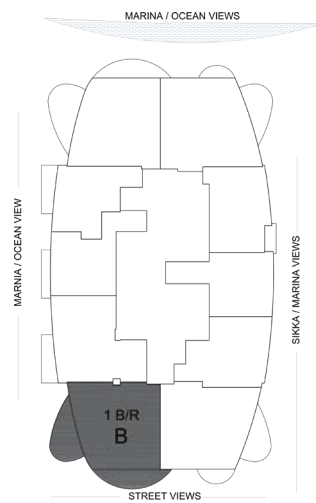
Total Area:  
840.67 sq. ft.

All room sizes and floor plan measurements are approximate and may vary per unit. Floor plans and unit features are preliminary and proposed only. The Developer reserves the right to modify, revise, change or withdraw any or all of the same in its sole and absolute discretion and without prior notice. Depictions of furnishings, finishes, appliances, counters, soffits, floor coverings and other matters of detail, including, without limitation, items of finish and decoration are conceptual only and are not necessarily included in each unit. Consult your Agreement and the Prospectus for items included with your unit.





## ONE-BEDROOM APARTMENT TYPE - B



### Area Details Type:

B (1Bedroom)

### Level:

2nd, 3rd & 5th - 19th Floor

### Living Area:

681.91 sq. ft.

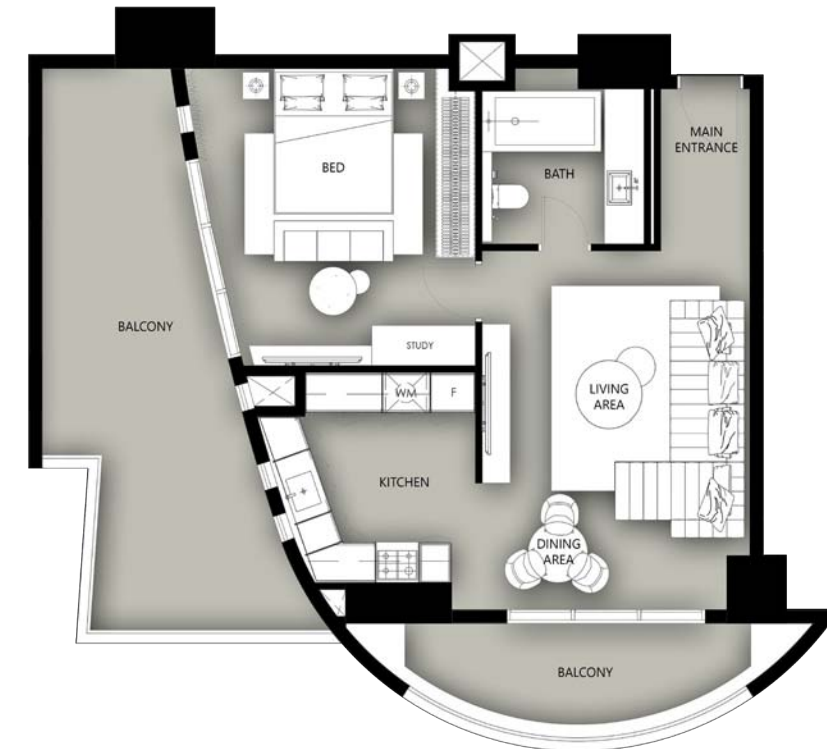
### Balcony Area:

239.92 sq. ft.

### Total Area:

921.83 sq. ft.

## ONE-BEDROOM APARTMENT TYPE - B1



### Area Details Type:

B1 (1Bedroom)

### Level:

1st Floor

### Living Area:

682.75 sq. ft.

### Balcony Area:

372.43 sq. ft.

### Total Area:

1,055.19 sq. ft.

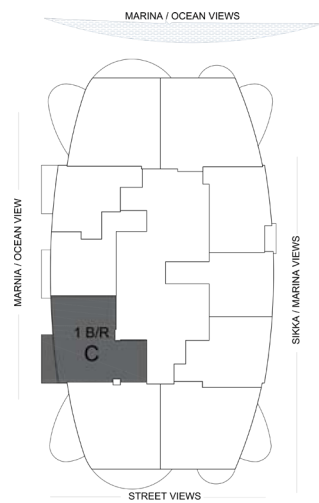
All room sizes and floor plan measurements are approximate and may vary per unit. Floor plans and unit features are preliminary and proposed only. The Developer reserves the right to modify, revise, change or withdraw any or all of the same in its sole and absolute discretion and without prior notice. Depictions of furnishings, finishes, appliances, counters, soffits, floor coverings and other matters of detail, including, without limitation, items of finish and decoration are conceptual only and are not necessarily included in each unit. Consult your Agreement and the Prospectus for items included with your unit.

All room sizes and floor plan measurements are approximate and may vary per unit. Floor plans and unit features are preliminary and proposed only. The Developer reserves the right to modify, revise, change or withdraw any or all of the same in its sole and absolute discretion and without prior notice. Depictions of furnishings, finishes, appliances, counters, soffits, floor coverings and other matters of detail, including, without limitation, items of finish and decoration are conceptual only and are not necessarily included in each unit. Consult your Agreement and the Prospectus for items included with your unit.





## ONE-BEDROOM APARTMENT TYPE - C



**Area Details Type:**  
C (1Bedroom)

**Level:**  
5th - 19th Floor

**Living Area:**  
624.20 sq. ft.

**Balcony Area:**  
62.97 sq. ft.

**Total Area:**  
687.17 sq. ft.

## ONE-BEDROOM APARTMENT TYPE - C1



**Area Details Type:**  
C1 (1Bedroom)

**Level:**  
1st - 3rd Floor

**Living Area:**  
715.98 sq. ft.

**Balcony Area:**  
-

**Total Area:**  
715.98 sq. ft.

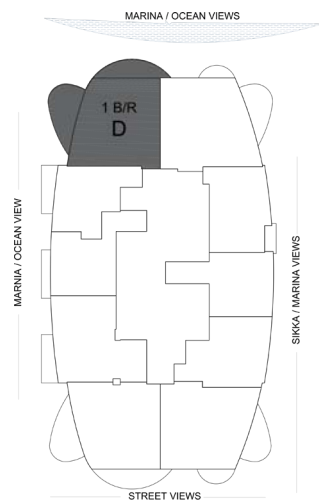
All room sizes and floor plan measurements are approximate and may vary per unit. Floor plans and unit features are preliminary and proposed only. The Developer reserves the right to modify, revise, change or withdraw any or all of the same in its sole and absolute discretion and without prior notice. Depictions of furnishings, finishes, appliances, counters, soffits, floor coverings and other matters of detail, including, without limitation, items of finish and decoration are conceptual only and are not necessarily included in each unit. Consult your Agreement and the Prospectus for items included with your unit.

All room sizes and floor plan measurements are approximate and may vary per unit. Floor plans and unit features are preliminary and proposed only. The Developer reserves the right to modify, revise, change or withdraw any or all of the same in its sole and absolute discretion and without prior notice. Depictions of furnishings, finishes, appliances, counters, soffits, floor coverings and other matters of detail, including, without limitation, items of finish and decoration are conceptual only and are not necessarily included in each unit. Consult your Agreement and the Prospectus for items included with your unit.





## ONE-BEDROOM APARTMENT TYPE - D



**Area Details Type:**  
D (1Bedroom)

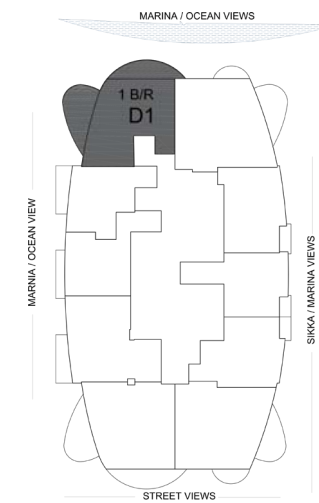
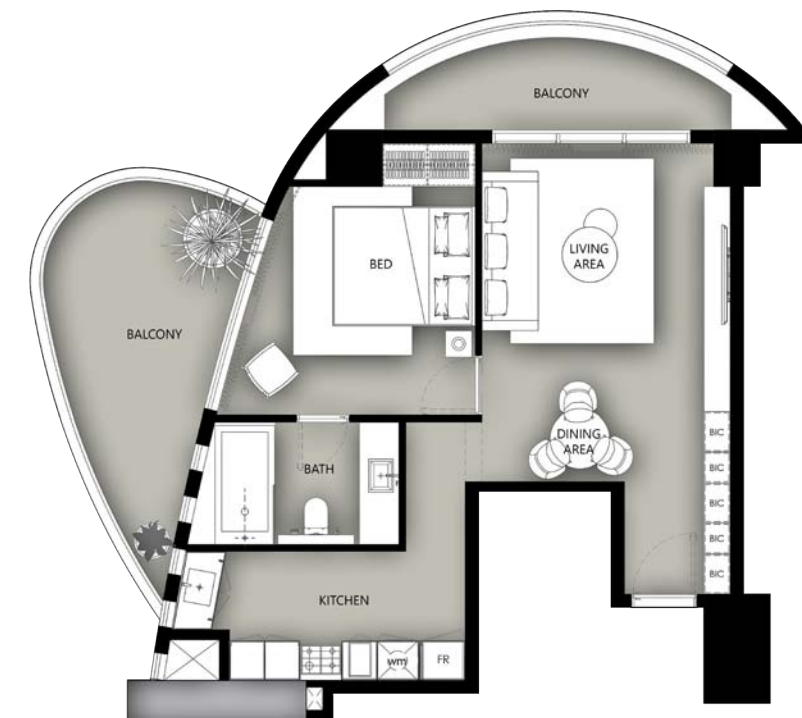
**Level:**  
2nd, 3rd, 5th - 13th  
& 15th - 19th Floor

**Living Area:**  
696.29 sq. ft.

**Balcony Area:**  
249.12 sq. ft.

**Total Area:**  
945.41 sq. ft.

## ONE-BEDROOM APARTMENT TYPE - D1



**Area Details Type:**  
D1 (1Bedroom)

**Level:**  
14th Floor

**Living Area:**  
617.20 sq. ft.

**Balcony Area:**  
249.18 sq. ft.

**Total Area:**  
866.39 sq. ft.

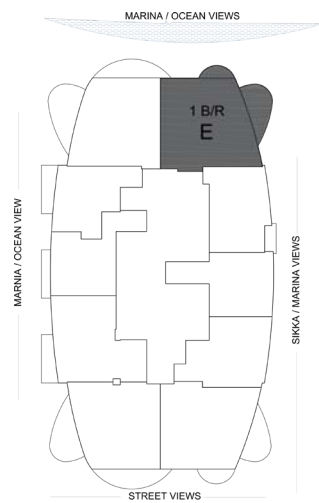
All room sizes and floor plan measurements are approximate and may vary per unit. Floor plans and unit features are preliminary and proposed only. The Developer reserves the right to modify, revise, change or withdraw any or all of the same in its sole and absolute discretion and without prior notice. Depictions of furnishings, finishes, appliances, counters, soffits, floor coverings and other matters of detail, including, without limitation, items of finish and decoration are conceptual only and are not necessarily included in each unit. Consult your Agreement and the Prospectus for items included with your unit.

All room sizes and floor plan measurements are approximate and may vary per unit. Floor plans and unit features are preliminary and proposed only. The Developer reserves the right to modify, revise, change or withdraw any or all of the same in its sole and absolute discretion and without prior notice. Depictions of furnishings, finishes, appliances, counters, soffits, floor coverings and other matters of detail, including, without limitation, items of finish and decoration are conceptual only and are not necessarily included in each unit. Consult your Agreement and the Prospectus for items included with your unit.





## ONE-BEDROOM APARTMENT TYPE - E



### Area Details Type:

E (1Bedroom)

### Level:

2nd, 3rd & 5th - 19th Floor

### Living Area:

767.16 sq. ft.

### Balcony Area:

144.89 sq. ft.

### Total Area:

912.05 sq. ft.

## ONE-BEDROOM APARTMENT TYPE - F



### Area Details Type:

F (1Bedroom)

### Level:

1st Floor

### Living Area:

582.44 sq. ft.

### Balcony Area:

39.93 sq. ft.

### Total Area:

622.37 sq. ft.

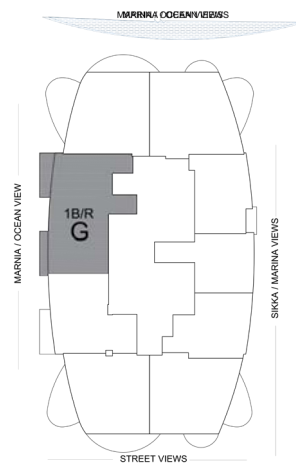
All room sizes and floor plan measurements are approximate and may vary per unit. Floor plans and unit features are preliminary and proposed only. The Developer reserves the right to modify, revise, change or withdraw any or all of the same in its sole and absolute discretion and without prior notice. Depictions of furnishings, finishes, appliances, counters, soffits, floor coverings and other matters of detail, including, without limitation, items of finish and decoration are conceptual only and are not necessarily included in each unit. Consult your Agreement and the Prospectus for items included with your unit.

All room sizes and floor plan measurements are approximate and may vary per unit. Floor plans and unit features are preliminary and proposed only. The Developer reserves the right to modify, revise, change or withdraw any or all of the same in its sole and absolute discretion and without prior notice. Depictions of furnishings, finishes, appliances, counters, soffits, floor coverings and other matters of detail, including, without limitation, items of finish and decoration are conceptual only and are not necessarily included in each unit. Consult your Agreement and the Prospectus for items included with your unit.





## ONE-BEDROOM APARTMENT TYPE - G



**Area Details Type:**  
G (1Bedroom)

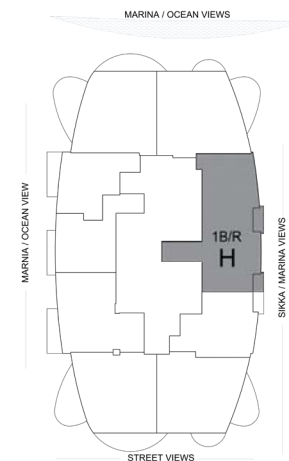
**Level:**  
9th Floor

**Living Area:**  
880.27 sq. ft.

**Balcony Area:**  
104.84 sq. ft.

**Total Area:**  
985.11 sq. ft.

## ONE-BEDROOM APARTMENT TYPE - H



**Area Details Type:**  
H (1Bedroom)

**Level:**  
3rd & 15th Floor

**Living Area:**  
934.31 sq. ft.

**Balcony Area:**  
59.74 sq. ft.

**Total Area:**  
994.05 sq. ft.

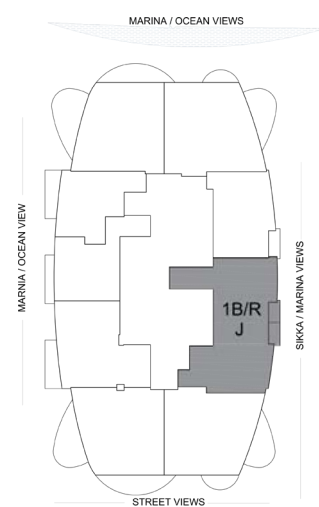
All room sizes and floor plan measurements are approximate and may vary per unit. Floor plans and unit features are preliminary and proposed only. The Developer reserves the right to modify, revise, change or withdraw any or all of the same in its sole and absolute discretion and without prior notice. Depictions of furnishings, finishes, appliances, counters, soffits, floor coverings and other matters of detail, including, without limitation, items of finish and decoration are conceptual only and are not necessarily included in each unit. Consult your Agreement and the Prospectus for items included with your unit.

All room sizes and floor plan measurements are approximate and may vary per unit. Floor plans and unit features are preliminary and proposed only. The Developer reserves the right to modify, revise, change or withdraw any or all of the same in its sole and absolute discretion and without prior notice. Depictions of furnishings, finishes, appliances, counters, soffits, floor coverings and other matters of detail, including, without limitation, items of finish and decoration are conceptual only and are not necessarily included in each unit. Consult your Agreement and the Prospectus for items included with your unit.





## ONE-BEDROOM APARTMENT TYPE - J



Area Details Type:  
J (1Bedroom)

Level:  
1st & 18th Floor

Living Area:  
948.30 sq. ft.

Balcony Area:  
51.24 sq. ft.

Total Area:  
999.54 sq. ft.

All room sizes and floor plan measurements are approximate and may vary per unit. Floor plans and unit features are preliminary and proposed only. The Developer reserves the right to modify, revise, change or withdraw any or all of the same in its sole and absolute discretion and without prior notice. Depictions of furnishings, finishes, appliances, counters, soffits, floor coverings and other matters of detail, including, without limitation, items of finish and decoration are conceptual only and are not necessarily included in each unit. Consult your Agreement and the Prospectus for items included with your unit.

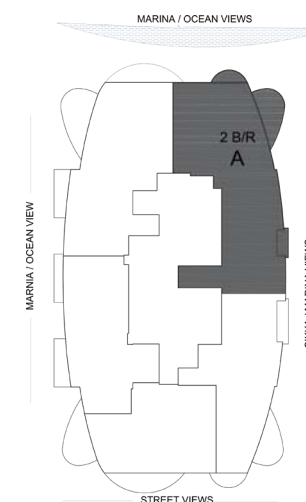




ACTUAL VIEW  
FROM CONDOR MARINA STAR RESIDENCES



## TWO-BEDROOM APARTMENT TYPE - A



Area Details Type:  
A (2Bedroom)

Level:  
4th & 20th - 24th Floor

Living Area:  
1,561.74 sq. ft.

Balcony Area:  
178.61 sq. ft.

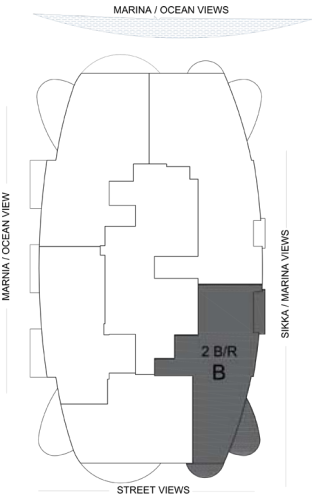
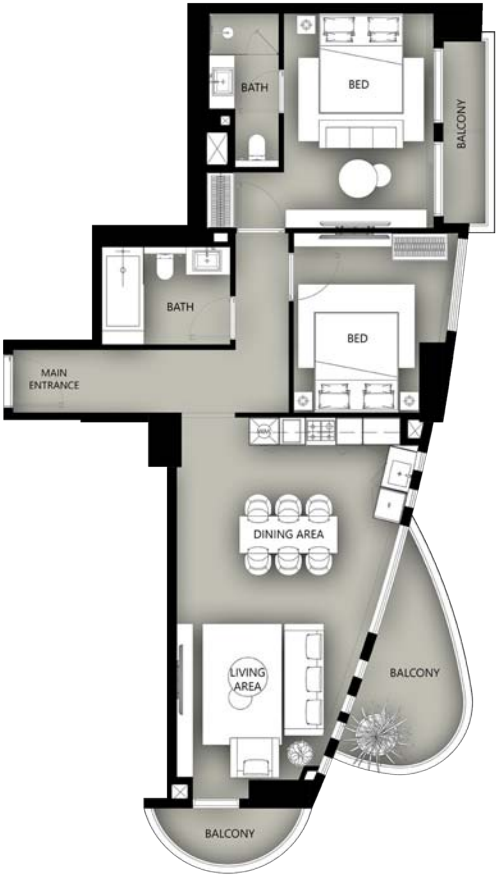
Total Area:  
1,740.34 sq. ft.

All room sizes and floor plan measurements are approximate and may vary per unit. Floor plans and unit features are preliminary and proposed only. The Developer reserves the right to modify, revise, change or withdraw any or all of the same in its sole and absolute discretion and without prior notice. Depictions of furnishings, finishes, appliances, counters, soffits, floor coverings and other matters of detail, including, without limitation, items of finish and decoration are conceptual only and are not necessarily included in each unit. Consult your Agreement and the Prospectus for items included with your unit.





# TWO-BEDROOM APARTMENT TYPE - B



Area Details Type:  
B (2Bedroom)

Level:  
20th - 24th Floor

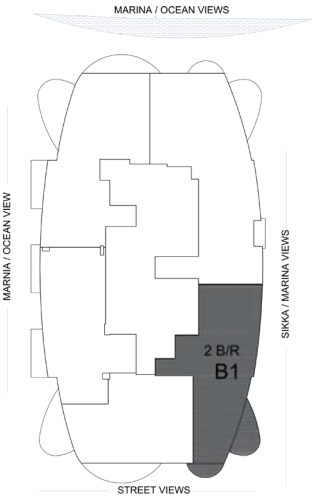
Living Area:  
992.97 sq. ft.

Balcony Area:  
190.95 sq. ft.

Total Area:  
1,183.92 sq. ft.

All room sizes and floor plan measurements are approximate and may vary per unit. Floor plans and unit features are preliminary and proposed only. The Developer reserves the right to modify, revise, change or withdraw any or all of the same in its sole and absolute discretion and without prior notice. Depictions of furnishings, finishes, appliances, counters, soffits, floor coverings and other matters of detail, including, without limitation, items of finish and decoration are conceptual only and are not necessarily included in each unit. Consult your Agreement and the Prospectus for items included with your unit.

# TWO-BEDROOM APARTMENT TYPE - B1



Area Details Type:  
B1 (2Bedroom)

Level:  
4th Floor

Living Area:  
1,020.53 sq. ft.

Balcony Area:  
139.50 sq. ft.

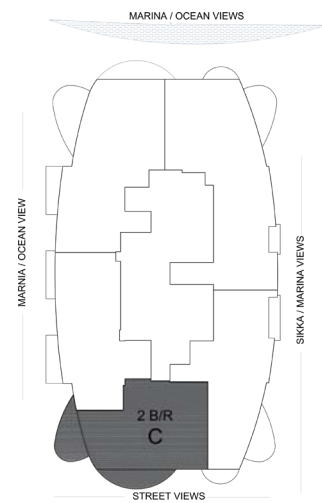
Total Area:  
1,160.03 sq. ft.

All room sizes and floor plan measurements are approximate and may vary per unit. Floor plans and unit features are preliminary and proposed only. The Developer reserves the right to modify, revise, change or withdraw any or all of the same in its sole and absolute discretion and without prior notice. Depictions of furnishings, finishes, appliances, counters, soffits, floor coverings and other matters of detail, including, without limitation, items of finish and decoration are conceptual only and are not necessarily included in each unit. Consult your Agreement and the Prospectus for items included with your unit.





# TWO-BEDROOM APARTMENT TYPE - C



Area Details Type:  
C (2Bedroom)

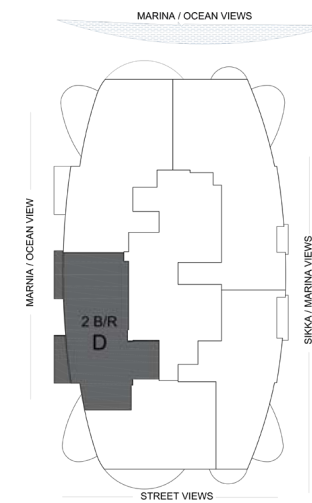
Level:  
4th & 20th - 24th Floor

Living Area:  
912.78 sq. ft.

Balcony Area:  
240.32 sq. ft.

Total Area:  
1,153.10 sq. ft.

# TWO-BEDROOM APARTMENT TYPE - D



Area Details Type:  
D (2Bedroom)

Level:  
4th & 20th - 24th Floor

Living Area:  
1,006.53 sq. ft.

Balcony Area:  
105.04 sq. ft.

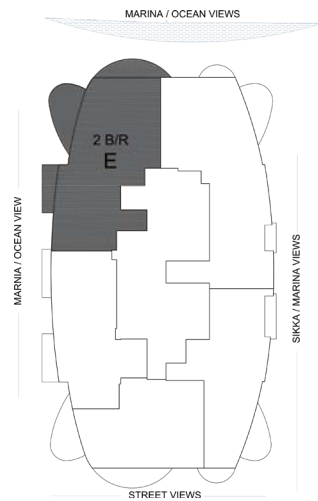
Total Area:  
1,111.57 sq. ft.

All room sizes and floor plan measurements are approximate and may vary per unit. Floor plans and unit features are preliminary and proposed only. The Developer reserves the right to modify, revise, change or withdraw any or all of the same in its sole and absolute discretion and without prior notice. Depictions of furnishings, finishes, appliances, counters, soffits, floor coverings and other matters of detail, including, without limitation, items of finish and decoration are conceptual only and are not necessarily included in each unit. Consult your Agreement and the Prospectus for items included with your unit.

All room sizes and floor plan measurements are approximate and may vary per unit. Floor plans and unit features are preliminary and proposed only. The Developer reserves the right to modify, revise, change or withdraw any or all of the same in its sole and absolute discretion and without prior notice. Depictions of furnishings, finishes, appliances, counters, soffits, floor coverings and other matters of detail, including, without limitation, items of finish and decoration are conceptual only and are not necessarily included in each unit. Consult your Agreement and the Prospectus for items included with your unit.



# TWO-BEDROOM APARTMENT TYPE - E



Area Details Type:  
E (2Bedroom)

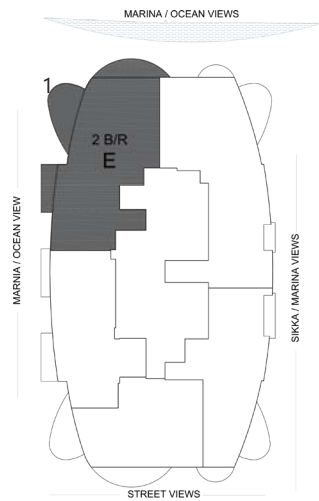
Level:  
20th - 24th Floor

Living Area:  
1,313.41 sq. ft.

Balcony Area:  
312.26 sq. ft.

Total Area:  
1,625.67 sq. ft.

# TWO-BEDROOM APARTMENT TYPE - E1



Area Details Type:  
E1 (2Bedroom)

Level:  
4th Floor

Living Area:  
1,240.11 sq. ft.

Balcony Area:  
312.15 sq. ft.

Total Area:  
1,552.26 sq. ft.

All room sizes and floor plan measurements are approximate and may vary per unit. Floor plans and unit features are preliminary and proposed only. The Developer reserves the right to modify, revise, change or withdraw any or all of the same in its sole and absolute discretion and without prior notice. Depictions of furnishings, finishes, appliances, counters, soffits, floor coverings and other matters of detail, including, without limitation, items of finish and decoration are conceptual only and are not necessarily included in each unit. Consult your Agreement and the Prospectus for items included with your unit.

All room sizes and floor plan measurements are approximate and may vary per unit. Floor plans and unit features are preliminary and proposed only. The Developer reserves the right to modify, revise, change or withdraw any or all of the same in its sole and absolute discretion and without prior notice. Depictions of furnishings, finishes, appliances, counters, soffits, floor coverings and other matters of detail, including, without limitation, items of finish and decoration are conceptual only and are not necessarily included in each unit. Consult your Agreement and the Prospectus for items included with your unit.





DUPLEX VILLA TYPE V-103 (FACING MARINA)



Area Details Type:  
V-103 (Duplex Villa)

Level:  
Ground + 1st Floor

Living Area:  
4,846.88 sq. ft.

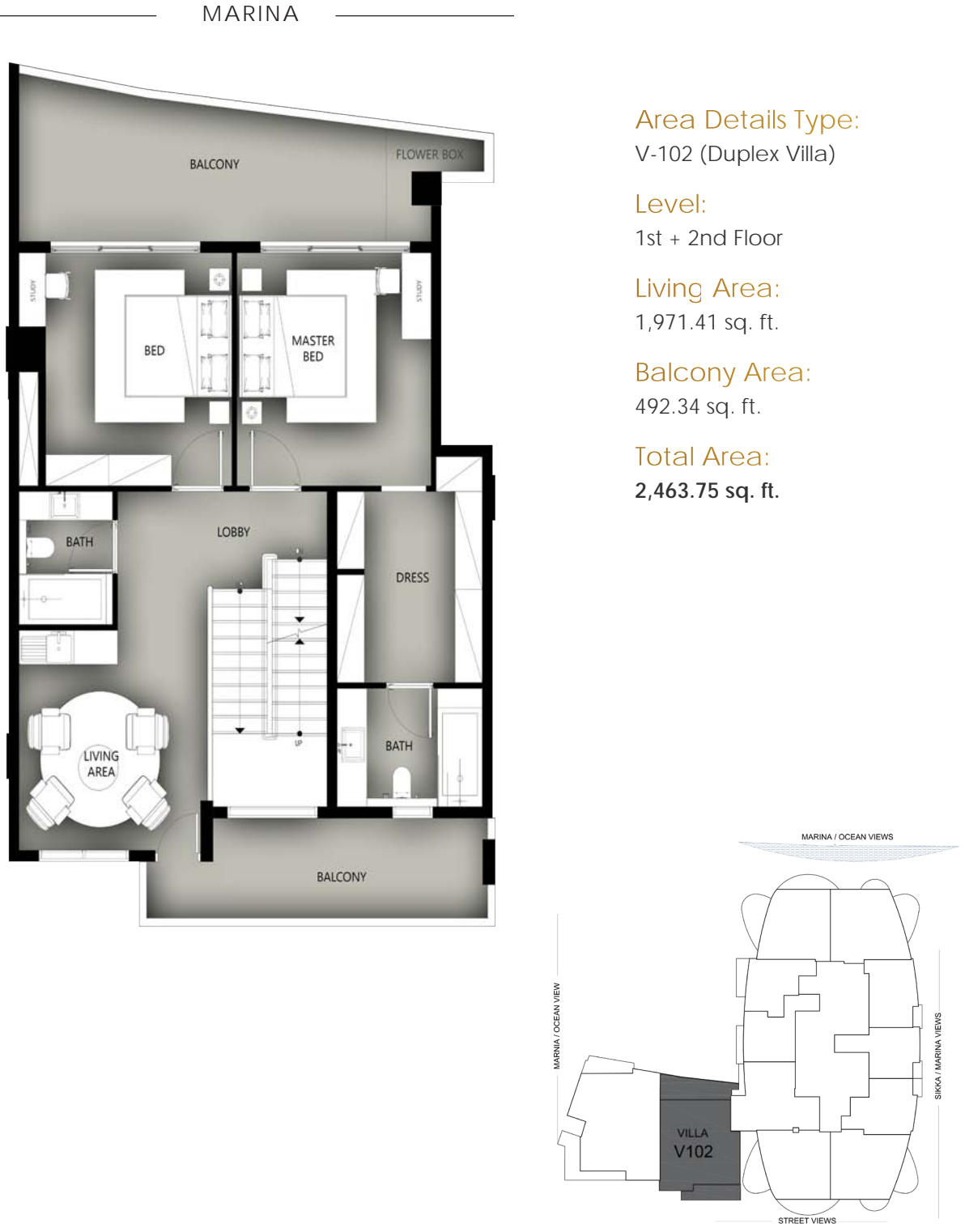
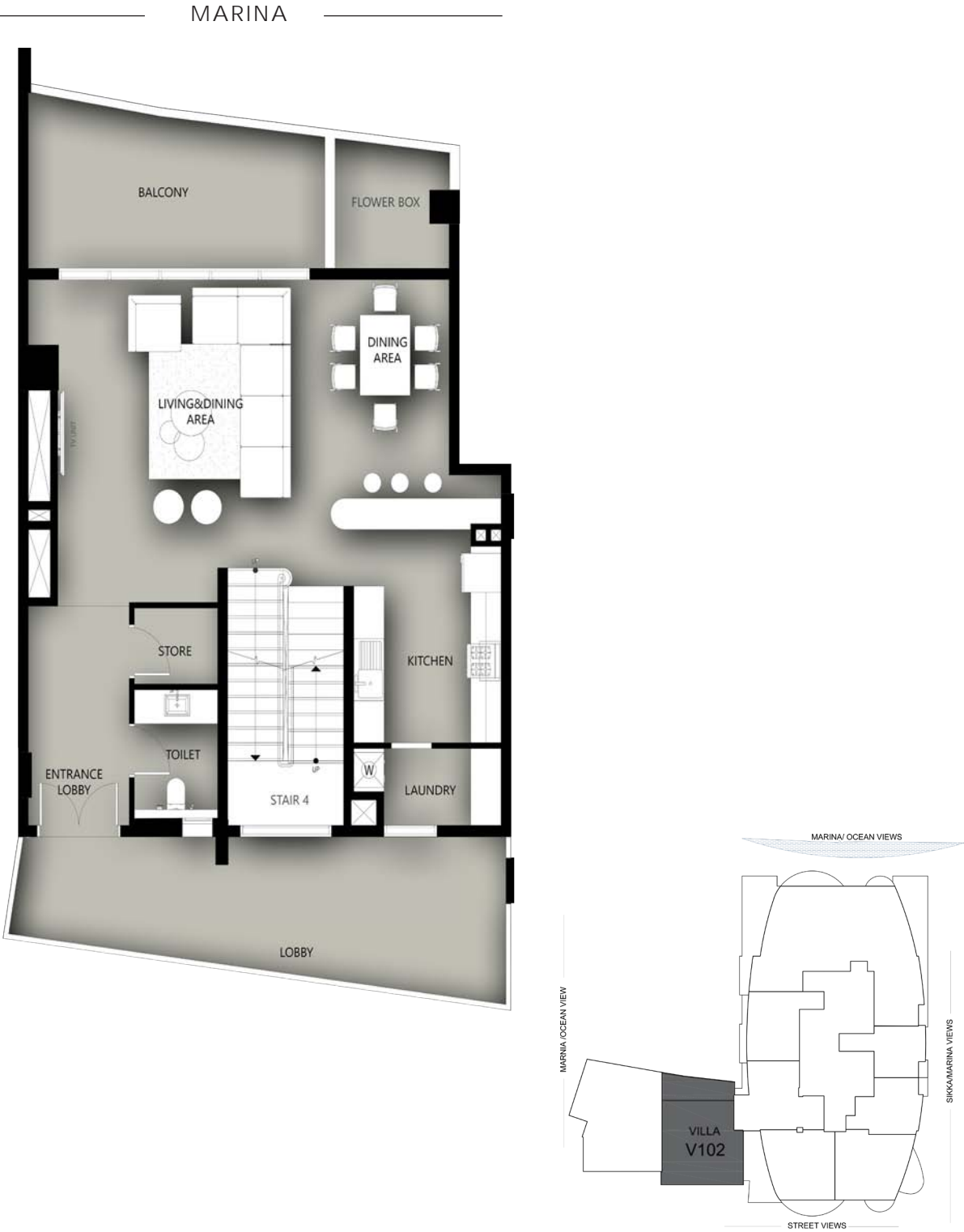
Balcony Area:  
4,407.80 sq. ft.

Total Area:  
9,254.68 sq. ft.

All room sizes and floor plan measurements are approximate and may vary per unit. Floor plans and unit features are preliminary and proposed only. The Developer reserves the right to modify, revise, change or withdraw any or all of the same in its sole and absolute discretion and without prior notice. Depictions of furnishings, finishes, appliances, counters, soffits, floor coverings and other matters of detail, including, without limitation, items of finish and decoration are conceptual only and are not necessarily included in each unit. Consult your Agreement and the Prospectus for items included with your unit.



DUPLEX VILLA TYPE V-102 (FACING MARINA)



Area Details Type:

V-102 (Duplex Villa)

Level:

1st + 2nd Floor

Living Area:

1,971.41 sq. ft.

Balcony Area:

492.34 sq. ft.

Total Area:

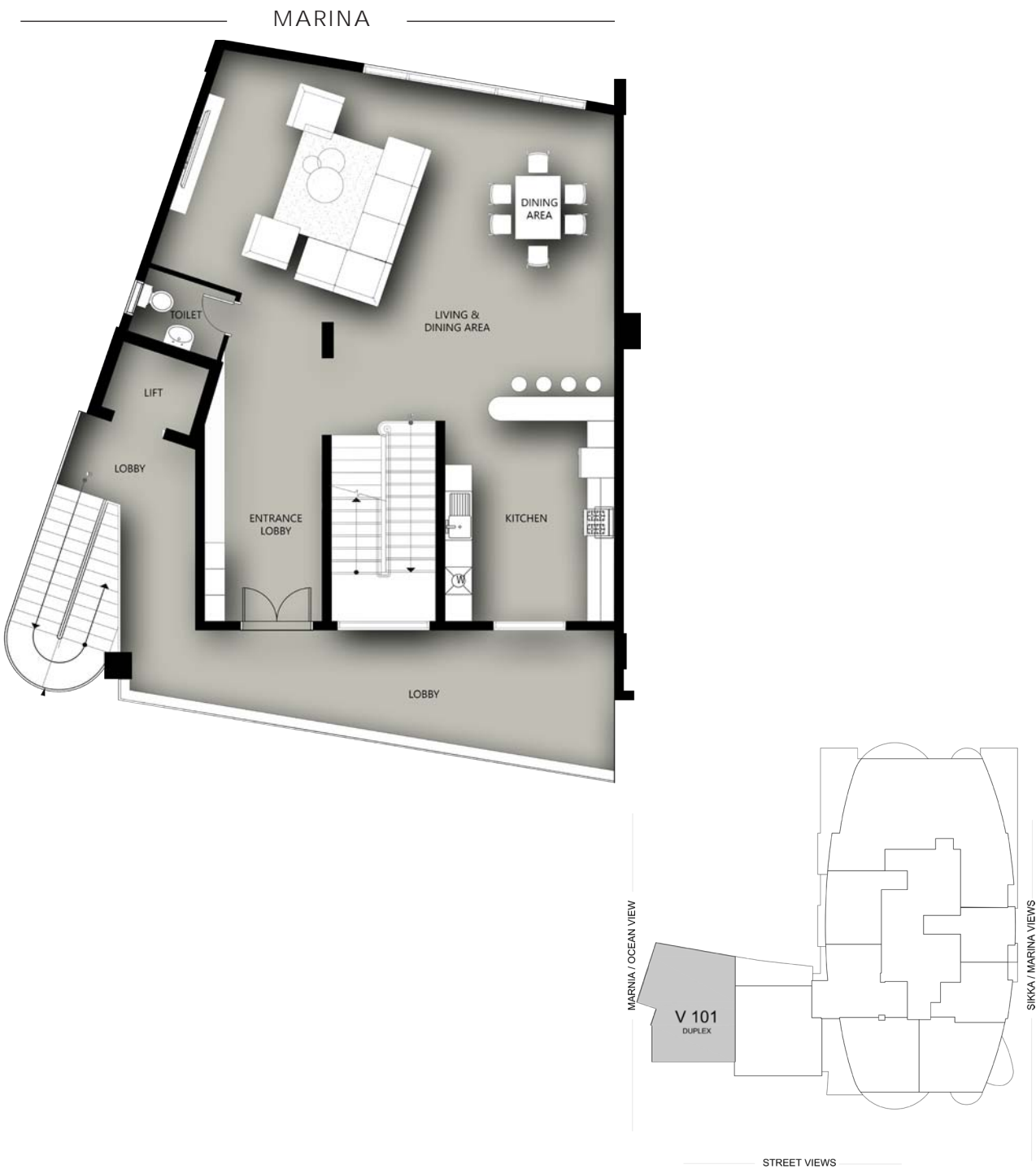
2,463.75 sq. ft.

All room sizes and floor plan measurements are approximate and may vary per unit. Floor plans and unit features are preliminary and proposed only. The Developer reserves the right to modify, revise, change or withdraw any or all of the same in its sole and absolute discretion and without prior notice. Depictions of furnishings, finishes, appliances, counters, soffits, floor coverings and other matters of detail, including, without limitation, items of finish and decoration are conceptual only and are not necessarily included in each unit. Consult your Agreement and the Prospectus for items included with your unit.





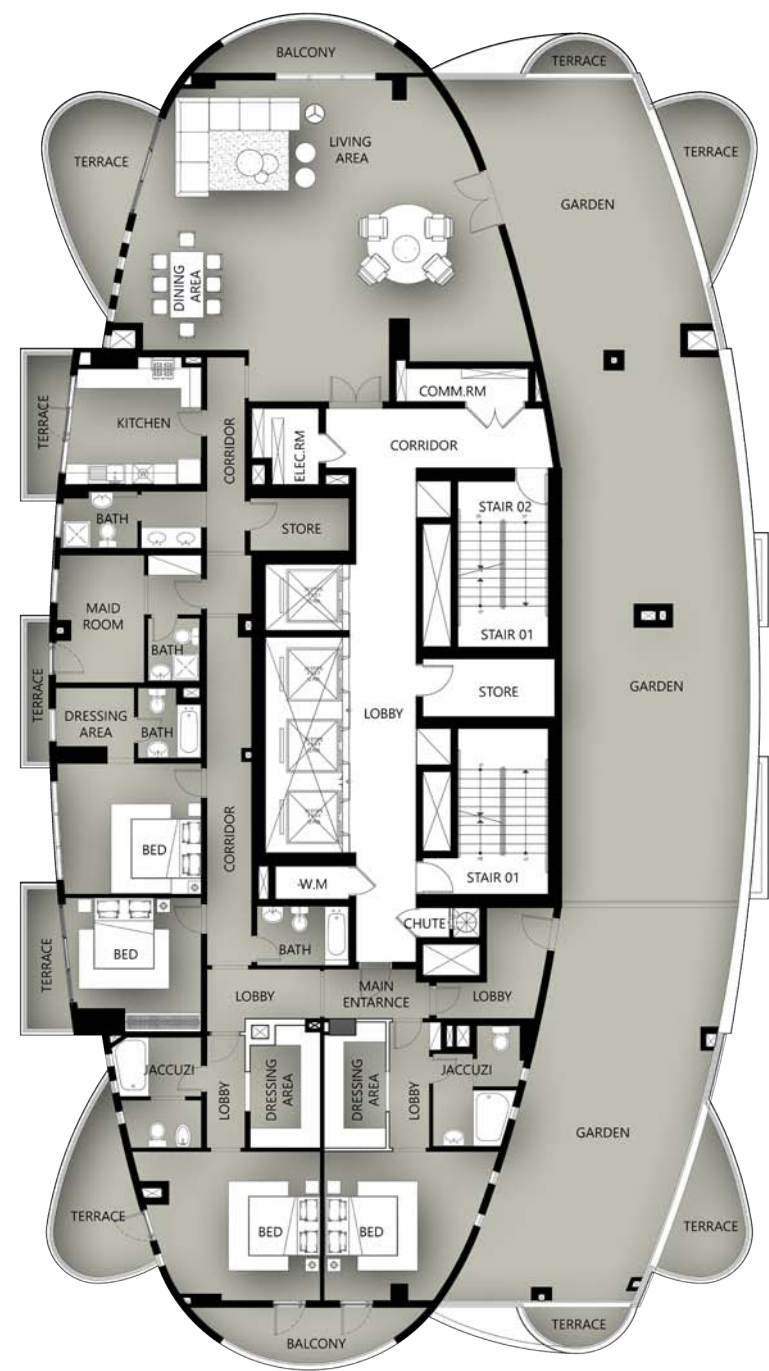
DUPLEX VILLA TYPE V-101 (FACING MARINA)



All room sizes and floor plan measurements are approximate and may vary per unit. Floor plans and unit features are preliminary and proposed only. The Developer reserves the right to modify, revise, change or withdraw any or all of the same in its sole and absolute discretion and without prior notice. Depictions of furnishings, finishes, appliances, counters, soffits, floor coverings and other matters of detail, including, without limitation, items of finish and decoration are conceptual only and are not necessarily included in each unit. Consult your Agreement and the Prospectus for items included with your unit.



PENTHOUSE ROOF LEVEL  
25th FLOOR



Area Details Type:  
Roof

Level:  
25th Floor

Living Area:  
3,592.13 sq. ft.

Balcony Area:  
3,188.49 sq. ft.

Total Area:  
6,780.62 sq. ft.

PENTHOUSE ROOF LEVEL  
26th FLOOR



Area Details Type:  
Roof

Level:  
26th Floor

Living Area:  
3,598.05 sq. ft.

Balcony Area:  
2,443.08 sq. ft.

Total Area:  
6,014.14 sq. ft.

All room sizes and floor plan measurements are approximate and may vary per unit. Floor plans and unit features are preliminary and proposed only. The Developer reserves the right to modify, revise, change or withdraw any or all of the same in its sole and absolute discretion and without prior notice. Depictions of furnishings, finishes, appliances, counters, soffits, floor coverings and other matters of detail, including, without limitation, items of finish and decoration are conceptual only and are not necessarily included in each unit. Consult your Agreement and the Prospectus for items included with your unit.








BUY | SELL | RENT | PROPERTY MANAGEMENT SERVICES

GET IN TOUCH WITH US

 **+971 56 818 8610**

 **info@homes4life.ae**

 **Head Office:**  
Office 25 | Oasis Center | Sheikh Zayed Road | Dubai | +971 4 338 7300  
**Branch Office:**  
Retail 1 | Safi Apartments | Town Square Dubai | Dubai | +971 4 398 1528