



THE

SAPPHIRE

SHEIKH ZAYED ROAD

DAMAC



A NEW DAWN OF URBAN LUXURY



DISCOVER A WORLD WHERE
POWER AND ELEGANCE
TRANSFORM EACH MOMENT
INTO A CELEBRATION.

T H E S A P P H I R E





BASK IN A RADIANCE THAT
SHINES LIKE A BEACON
ABOVE THE CITY.



T H E S A P P H I R E



EXPERIENCE
LUXURY THAT LIFTS
YOUR SPIRIT.

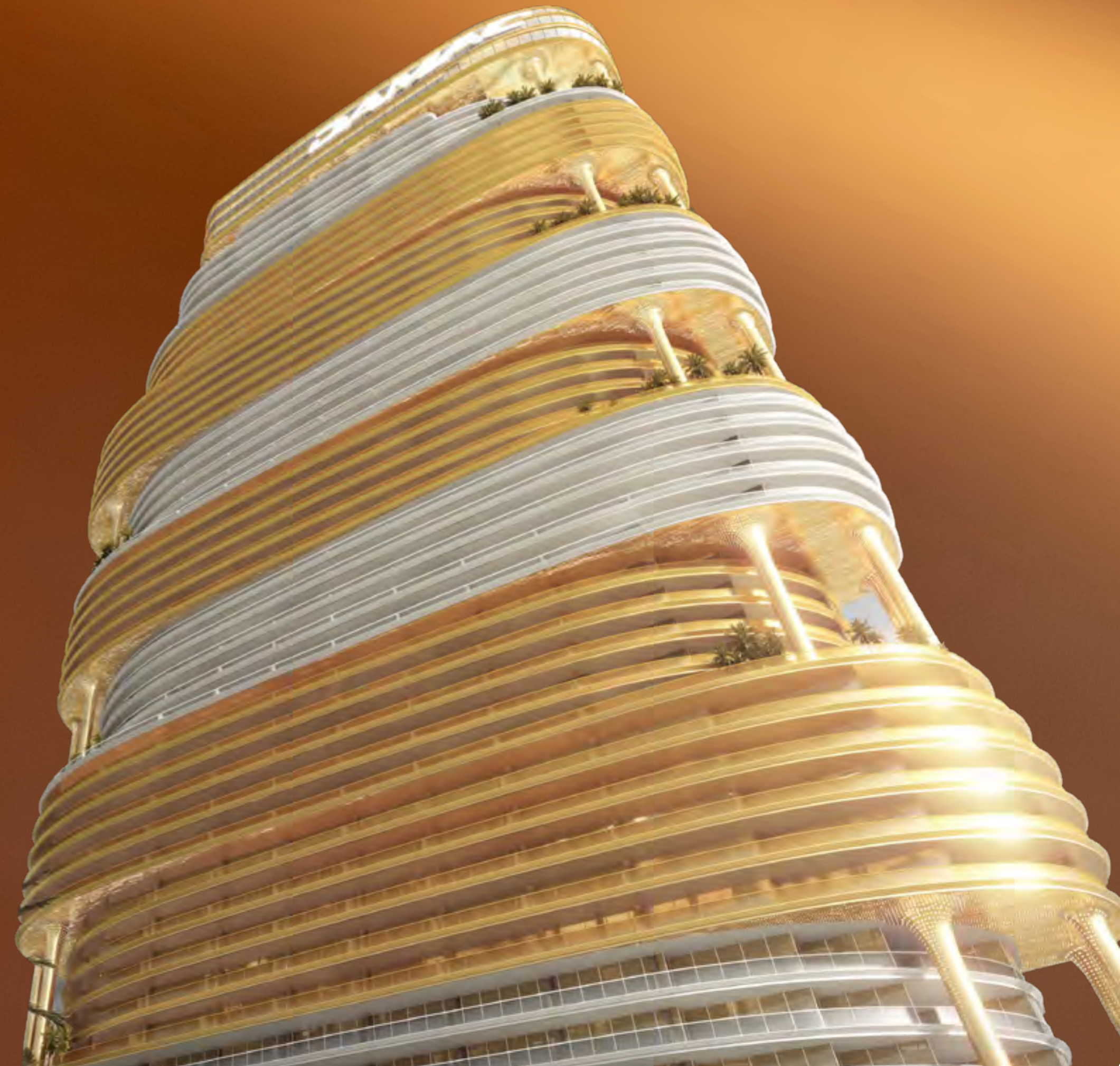
P R E S E N T I N G



THE

SAPPHIRE

SHEIKH ZAYED ROAD





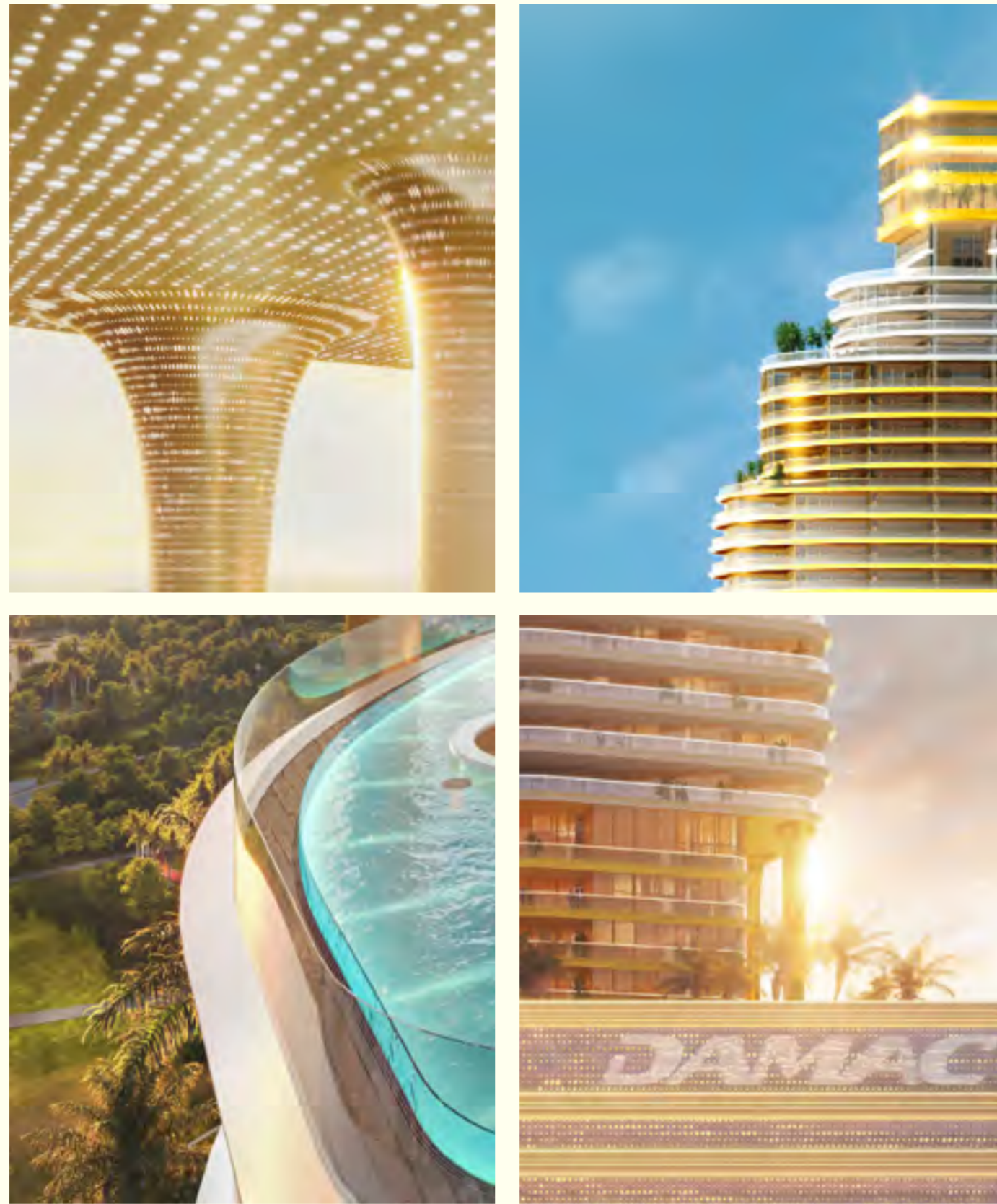
AT THE SAPPHIRE, SHEIKH ZAYED
ROAD, DE GRISOGONO BRINGS
TO LIFE A VISION OF OPULENT LIVING,
WITH EACH ELEMENT ECHOING
THE JEWELLER'S RENOWNED BLEND
OF BEAUTY AND PRECISION.

de GRISOGONO
GENEVE





EMBRACE ELEVATED URBAN SERENITY

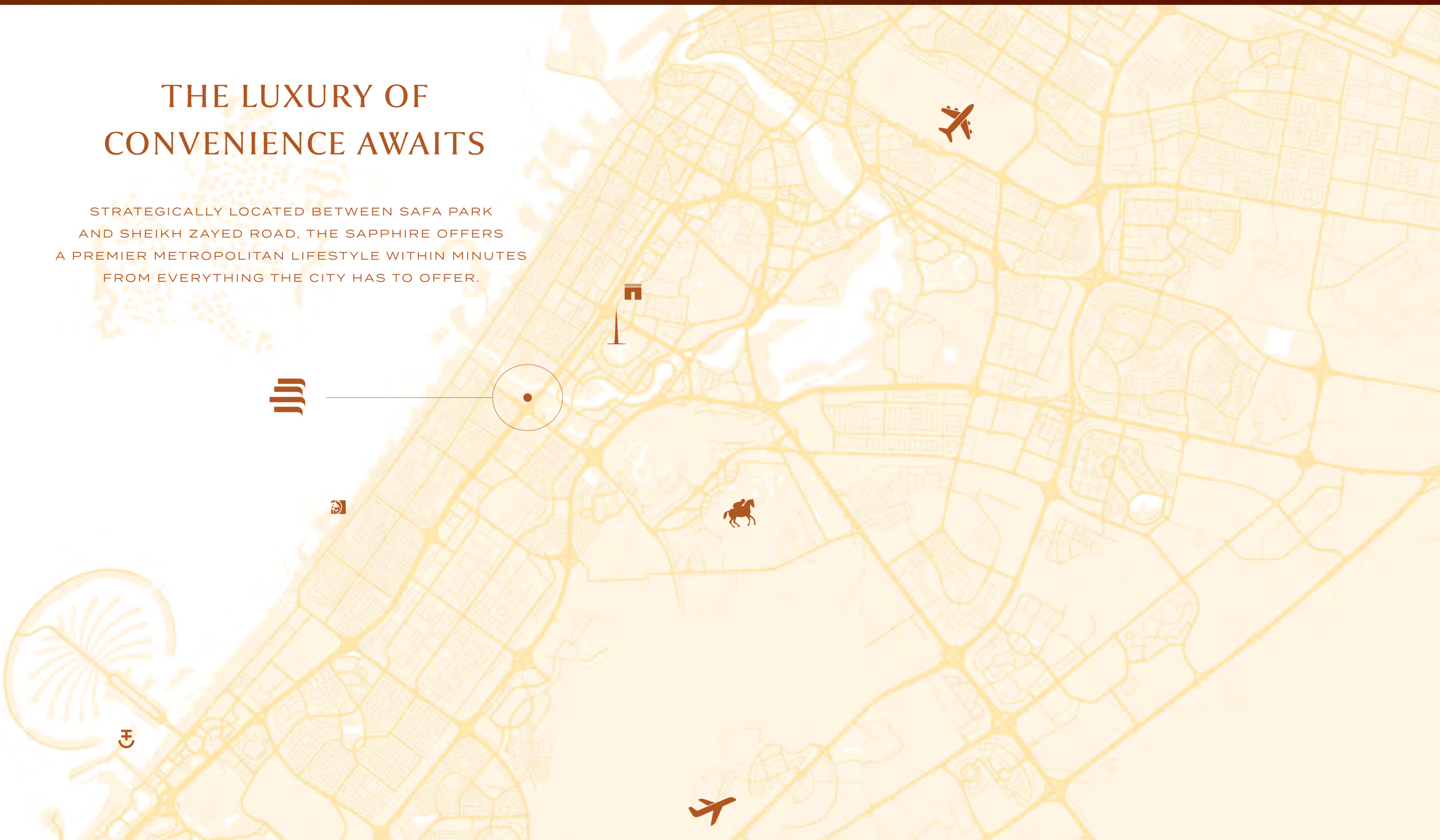


RISING AGAINST THE DUBAI SKYLINE,
THE SAPPHIRE, WITH ITS FLOWING LINES
AND SWEEPING CURVES, IS AN ARCHITECTURAL
MASTERPIECE THAT STANDS NOT ONLY AS
A RESIDENCE, BUT AS A LANDMARK OF LUXURY.



THE LUXURY OF CONVENIENCE AWAITS

STRATEGICALLY LOCATED BETWEEN SAFA PARK
AND SHEIKH ZAYED ROAD, THE SAPPHIRE OFFERS
A PREMIER METROPOLITAN LIFESTYLE WITHIN MINUTES
FROM EVERYTHING THE CITY HAS TO OFFER.



7 MINS

BURJ KHALIFA



9 MINS

DUBAI
INTERNATIONAL
FINANCIAL CENTRE



10 MINS

THE STABLES
DUBAI, MEYDAN



12 MINS

MGM RESORT
ISLAND



14 MINS

DUBAI
INTERNATIONAL
AIRPORT



14 MINS

DUBAI HARBOUR



16 MINS

PALM JUMEIRAH



35 MINS

JETEX VIP
TERMINAL

EXQUISITE VIEWS ARE ON THE HORIZON

WAKE UP INSPIRED EVERY DAY TO BREATHTAKING
VIEWS OF DUBAI ICONS, SUCH AS SAFA PARK,
DUBAI CANAL, BURJ KHALIFA, AND BURJ AL ARAB,
RIGHT OUTSIDE YOUR WINDOW.







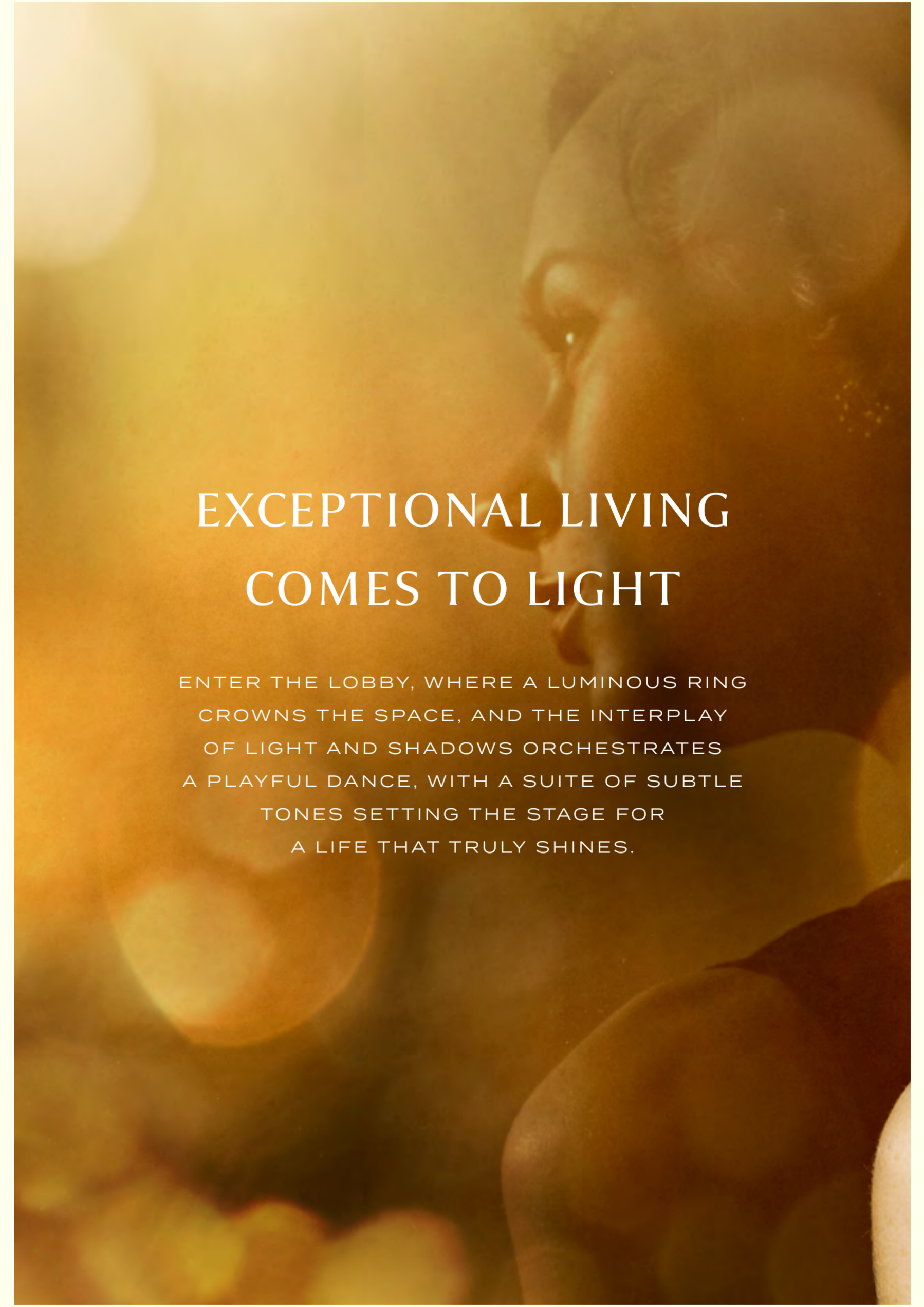
AT THE SAPPHIRE, A RADIANT CANOPY
WELCOMES YOU HOME, OFFERING A SPARKLING
PREVIEW OF THE LUXURY THAT AWAITS WITHIN.





EXCEPTIONAL LIVING COMES TO LIGHT

ENTER THE LOBBY, WHERE A LUMINOUS RING
CROWNS THE SPACE, AND THE INTERPLAY
OF LIGHT AND SHADOWS ORCHESTRATES
A PLAYFUL DANCE, WITH A SUITE OF SUBTLE
TONES SETTING THE STAGE FOR
A LIFE THAT TRULY SHINES.







AN URBAN SANCTUARY
THAT IS YOURS.



WORK IN A SPACE THAT FLOURISHES

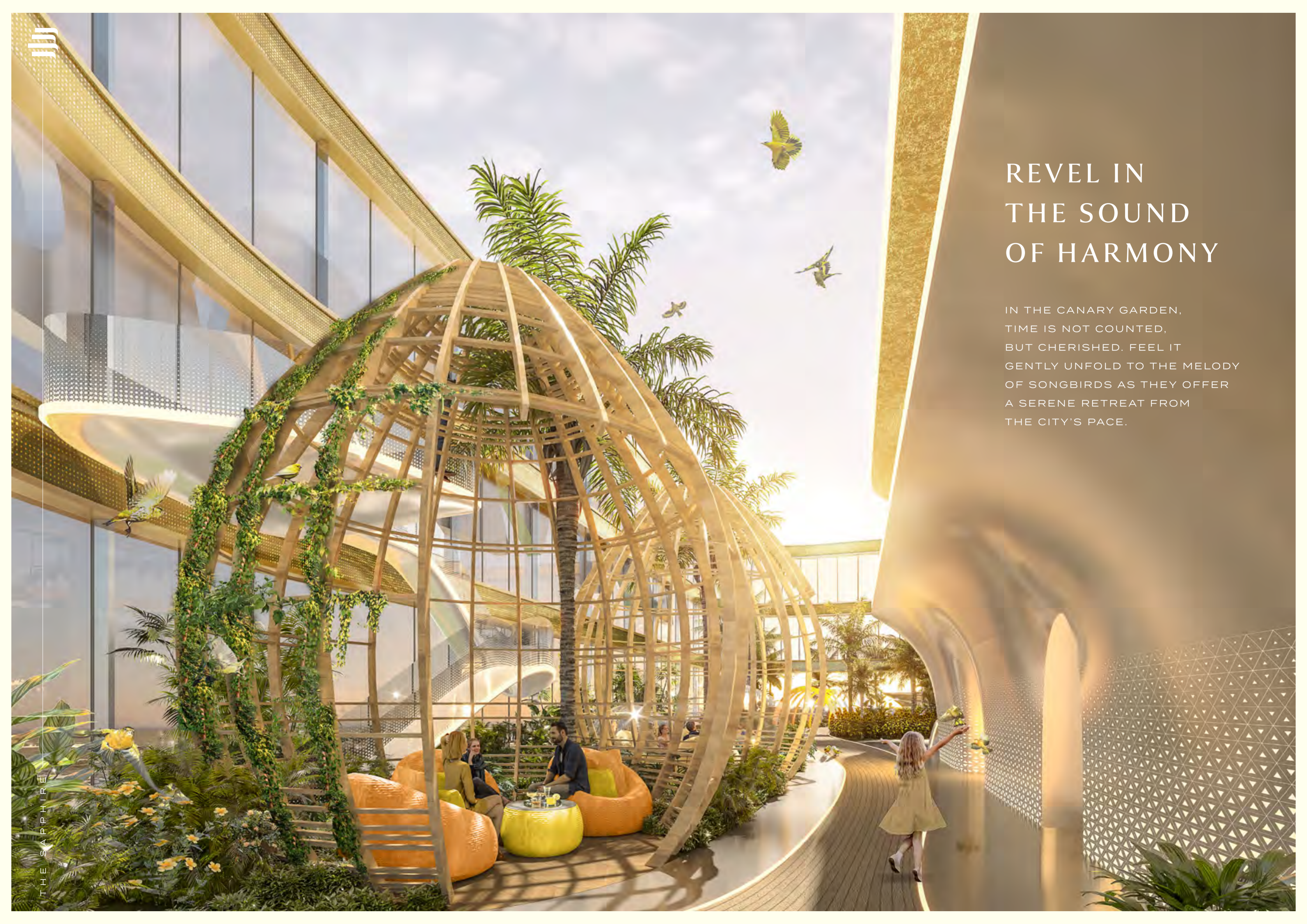
SET UP FOR THE DAY AT THE SAPPHIRE'S
SUNFLOWER GARDEN, A COWORKING SPACE
INSPIRING CREATIVITY AND INNOVATION,
WHERE BEAUTY AND PRODUCTIVITY
BLOOM SIDE BY SIDE.





REVEL IN THE SOUND OF HARMONY

IN THE CANARY GARDEN,
TIME IS NOT COUNTED,
BUT CHERISHED. FEEL IT
GENTLY UNFOLD TO THE MELODY
OF SONGBIRDS AS THEY OFFER
A SERENE RETREAT FROM
THE CITY'S PACE.





DIVE INTO AN OASIS OF INFINITE LUXURY

OVERLOOKING YET SHELTERED FROM
THE BUSTLING METROPOLIS BELOW,
THE INFINITY POOL CRAFTS
A SERENE RETREAT ABOVE THE
URBAN LANDSCAPE, WITH EACH
SWIM A SOJOURN INTO STILLNESS.





THEN, A SPLASH OF COLOUR UNDER THE NIGHT SKY...

AS THE SUN SETS, SEE THE POOL TRANSITION
INTO A MESMERISING LIGHT SPECTACLE,
TURNING EVENINGS INTO A UNIQUE BLEND
OF PLEASURE AND WONDER.





THE SAPPHIRE



BURN BRIGHT, TRAIN HARD

AT THE 24/7 GYM AND OUTDOOR RUNNING TRACK,
BATHED IN THE GLOW OF VIVID COLOURS
AND CONTRASTS, LET YOUR SURROUNDINGS,
AND YOUR PASSION FOR FITNESS, FUEL YOU.







FEEL PROFOUND BLISS AND INNER PEACE

AT THE SPA, EACH TREATMENT IS
CRAFTED TO MEET YOUR INDIVIDUAL NEEDS.
HERE IS YOUR INVITATION TO ESCAPE,
RECONNECT WITH YOURSELF, AND EMBRACE
THE PAMPERING YOU DESERVE.

T H E S A P P H I R E











HERE, EVERY DETAIL
IS THE DEFINITION
OF LUXURY

FROM LUXURY APARTMENTS AND
TOWNHOUSES, TO ULTRA LUXURIOUS
PENTHOUSES, YOUR HOME AT THE SAPPHIRE
IS A FUSION OF CONTEMPORARY AESTHETICS
AND PRACTICAL SOPHISTICATION. WITH SLEEK,
CHIC, AND INDULGENT SPACES THAT REDEFINE
CITY LIVING, WELCOME TO A NEW DAWN
OF URBAN LUXURY.

T H E S A P P H I R E





















THE
SAPPHIRE
SHEIKH ZAYED ROAD



FLOOR PLANS
ONE BEDROOM



DAMAC

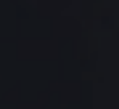


BUY | SELL | RENT | PROPERTY MANAGEMENT SERVICES

GET IN TOUCH WITH US

 +971 56 818 8610

 info@homes4life.ae

 **Head Office:**
Office 25 | Oasis Center | Sheikh Zayed Road | Dubai | +971 4 338 7300

Branch Office:
Retail 1 | Safi Apartments | Town Square Dubai | Dubai | +971 4 398 1528