

# Roma

RESIDENCES *by* JRP

Elevated living *for* tomorrow

## STUDIO TYPE

### SUITE AREA

397 SQ.FT. 36.92 SQ.M.

### BALCONY AREA

59 SQ.FT. 5.47 SQ.M.

### TOTAL AREA

456 SQ.FT. 42.39 SQ.M.



## 1 BEDROOM TYPE A

### SUITE AREA

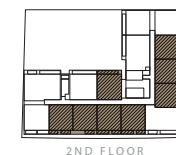
793 SQ.FT. 73.63 SQ.M.

### BALCONY AREA

43 SQ.FT. 4.04 SQ.M.

### TOTAL AREA

836 SQ.FT. 77.67 SQ.M.



## 1 BEDROOM TYPE A+

### SUITE AREA

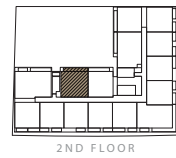
911 SQ.FT. 84.61 SQ.M.

### BALCONY AREA

117 SQ.FT. 10.89 SQ.M.

### TOTAL AREA

1028 SQ.FT. 95.50 SQ.M.



## 1 BEDROOM TYPE A-M

### SUITE AREA

793 SQ.FT. 73.63 SQ.M.

### BALCONY AREA

43 SQ.FT. 4.04 SQ.M.

### TOTAL AREA

836 SQ.FT. 77.67 SQ.M.



## 1 BEDROOM TYPE B

### SUITE AREA

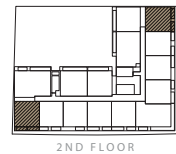
810 SQ.FT. 75.28 SQ.M.

### BALCONY AREA

112 SQ.FT. 10.44 SQ.M.

### TOTAL AREA

923 SQ.FT. 85.72 SQ.M.



## 1 BEDROOM TYPE B+

### SUITE AREA

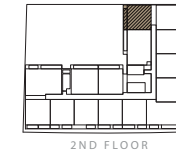
752 SQ.FT. 69.85 SQ.M.

### BALCONY AREA

100 SQ.FT. 9.33 SQ.M.

### TOTAL AREA

852 SQ.FT. 79.18 SQ.M.



## 1 BEDROOM TYPE B-M

### SUITE AREA

810 SQ.FT. 75.28 SQ.M.

### BALCONY AREA

112 SQ.FT. 10.44 SQ.M.

### TOTAL AREA

923 SQ.FT. 85.72 SQ.M.



4TH FLOOR



## 1 BEDROOM TYPE C

### SUITE AREA

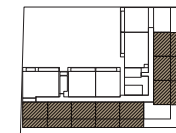
527 SQ.FT. 48.93 SQ.M.

### BALCONY AREA

276 SQ.FT. 25.60 SQ.M.

### TOTAL AREA

802 SQ.FT. 74.53 SQ.M.



5TH FLOOR



## 1 BEDROOM TYPE C-M

### SUITE AREA

527 SQ.FT.      48.93 SQ.M.

### BALCONY AREA

276 SQ.FT.      25.60 SQ.M.

### TOTAL AREA

802 SQ.FT.      74.53 SQ.M.



## 1 BEDROOM TYPE D

### SUITE AREA

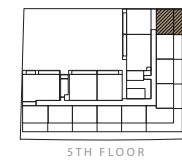
520 SQ.FT.      48.29 SQ.M.

### BALCONY AREA

276 SQ.FT.      25.60 SQ.M.

### TOTAL AREA

795 SQ.FT.      73.89 SQ.M.





## 1 BEDROOM TYPE E

### SUITE AREA

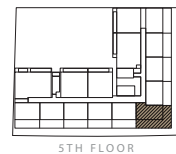
533 SQ.FT.    49.52 SQ.M.

### BALCONY AREA

571 SQ.FT.    53.09 SQ.M.

### TOTAL AREA

1104 SQ.FT.    102.61 SQ.M.



5TH FLOOR



## 2 BEDROOM TYPE A

### SUITE AREA

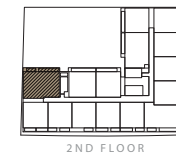
1220 SQ.FT.    113.38 SQ.M.

### BALCONY AREA

143 SQ.FT.    13.29 SQ.M.

### TOTAL AREA

1363 SQ.FT.    126.67 SQ.M.



2ND FLOOR



## 2 BEDROOM TYPE B

### SUITE AREA

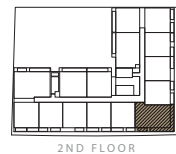
1093 SQ.FT. 101.57 SQ.M.

### BALCONY AREA

270 SQ.FT. 25.12 SQ.M.

### TOTAL AREA

1364 SQ.FT. 126.69 SQ.M.



## 2 BEDROOM TYPE C

### SUITE AREA

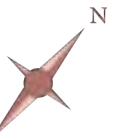
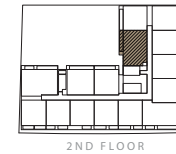
1044 SQ.FT. 96.99 SQ.M.

### BALCONY AREA

101 SQ.FT. 9.38 SQ.M.

### TOTAL AREA

1145 SQ.FT. 106.36 SQ.M.





# JRP

Welcome to the design-centric real estate development, where opulence meets innovation – JRP Real-Estate Development in the vibrant city of Dubai. Established with a commitment to redefine living spaces, JRP is more than just a developer; it's a manifestation of architectural excellence and construction mastery.

At the core of JRP's philosophy lies an unwavering dedication to design, setting it apart in a city known for its commitment to aesthetics. The founders and experts behind JRP bring a wealth of experience in both design and construction, creating a synergy that forms the bedrock of their development approach.

What sets JRP apart is its meticulous attention to detail at every stage of development. From conceptualization to completion, each project undergoes a journey of creativity and precision. The fusion of contemporary design elements with practical functionality is the hallmark of a JRP property, ensuring a harmonious blend of aesthetics and utility.

JRP Real-Estate Development's portfolio is a testament to its commitment to diversity in design. Whether it's residential, commercial, or mixed-use spaces, each project reflects a unique identity while staying true to the brand's overarching philosophy. The architectural language speaks volumes about JRP's dedication to pushing the boundaries of conventional design, resulting in properties that stand as timeless landmarks.





# EVOLUTIONS

Evolutions is the first-of-its-kind real estate intelligence hub in Dubai that combines a concept store of exclusive developments, a 360-degree consultancy that specializes in the entire real estate lifecycle, and a global network of industry experts to facilitate connections with major industry players. The company serves as a bridge connecting all stakeholders, including developers, investors, brokers, and end-users. It actively supports the interests of every stakeholder, working towards creating, developing, and delivering valuable assets.






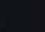
BUY | SELL | RENT | PROPERTY MANAGEMENT SERVICES

## GET IN TOUCH WITH US

 **+971 56 818 8610**

 **info@homes4life.ae**

 **Head Office:**  
Office 25 | Oasis Center | Sheikh Zayed Road | Dubai | +971 4 338 7300

 **Branch Office:**  
Retail 1 | Safi Apartments | Town Square Dubai | Dubai | +971 4 398 1528