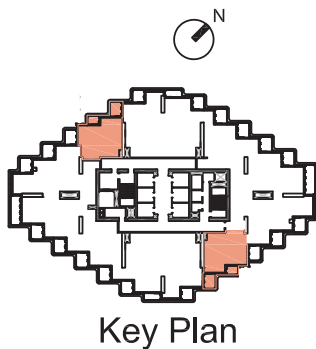
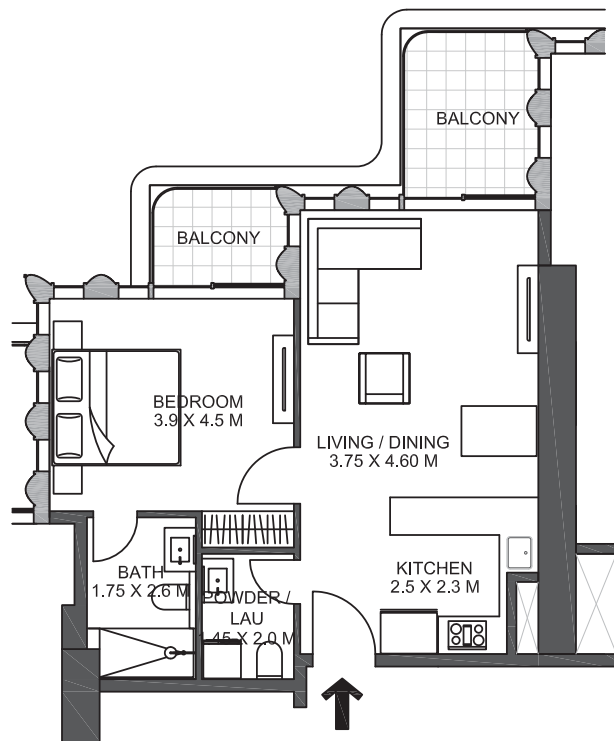


O N E · B

T O W E R

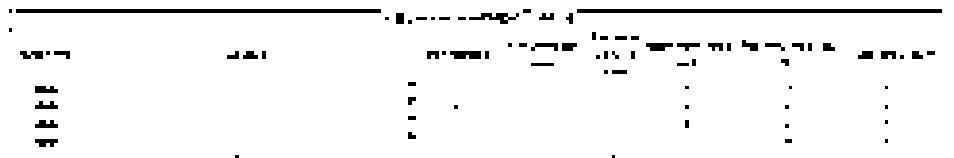
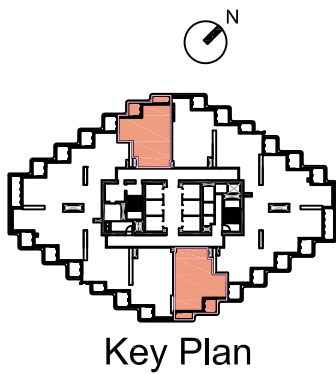
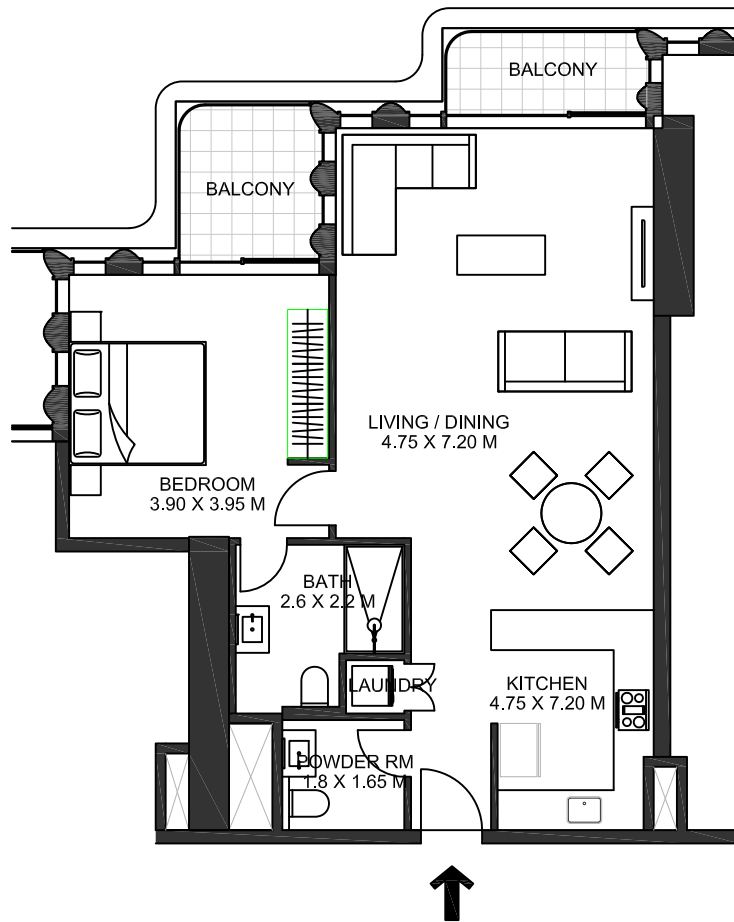
F L O O R P L A N S

Unit Layout - 1B/Type A



Unit Layout - 1B/Type B

O N E · B
T O W E R

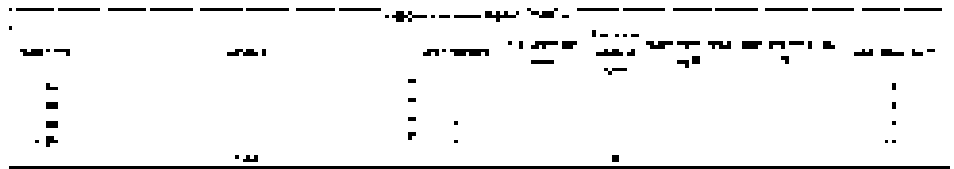
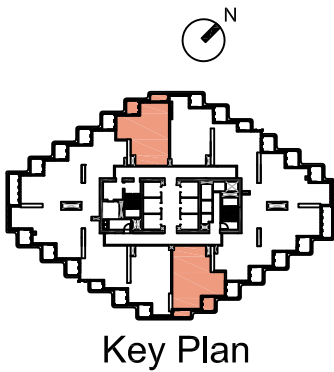
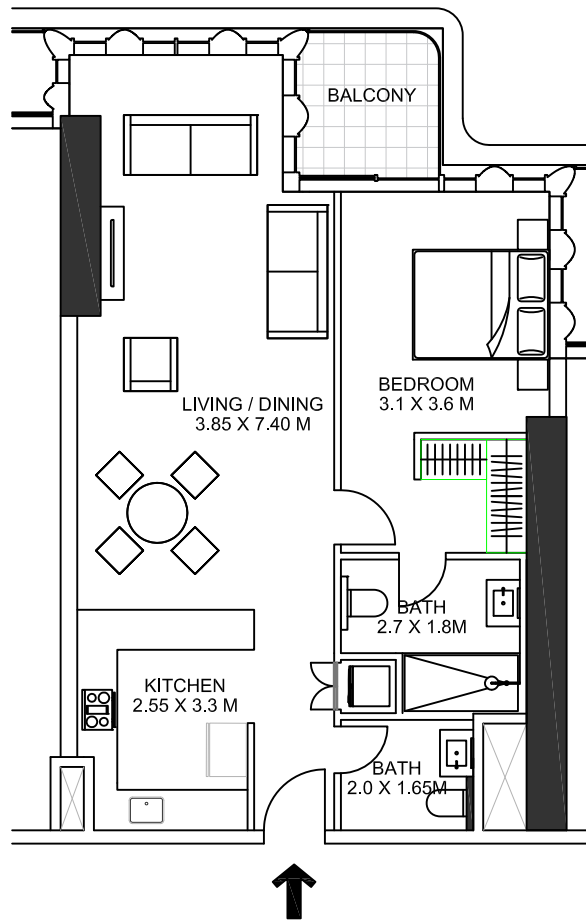


wasl

All room dimensions are in metric and measured to structural elements and exclude wall finishes and construction tolerances. Calculation of suite is measured as the area bounded by the centerline of demising or party walls separating one unit from another unit, the exterior surface of all exterior walls and the exterior surface of the corridor wall on enclosing and abutting the unit. Calculation of terrace area is measured as the area bounded by the centerlines of demising or party walls separating one unit from another unit, the outermost face of the enclosing guard and the external face of the site abutting the balcony. All materials, dimensions and drawings features and amenities are approximate at the line of printing. Information is subject to change without notice. Actual suite areas may vary from the stated area. Drawings are not to scale EXEEO. The developer reserves the right to make revisions.

Unit Layout - 1B/Type C

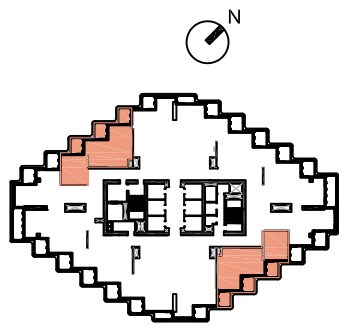
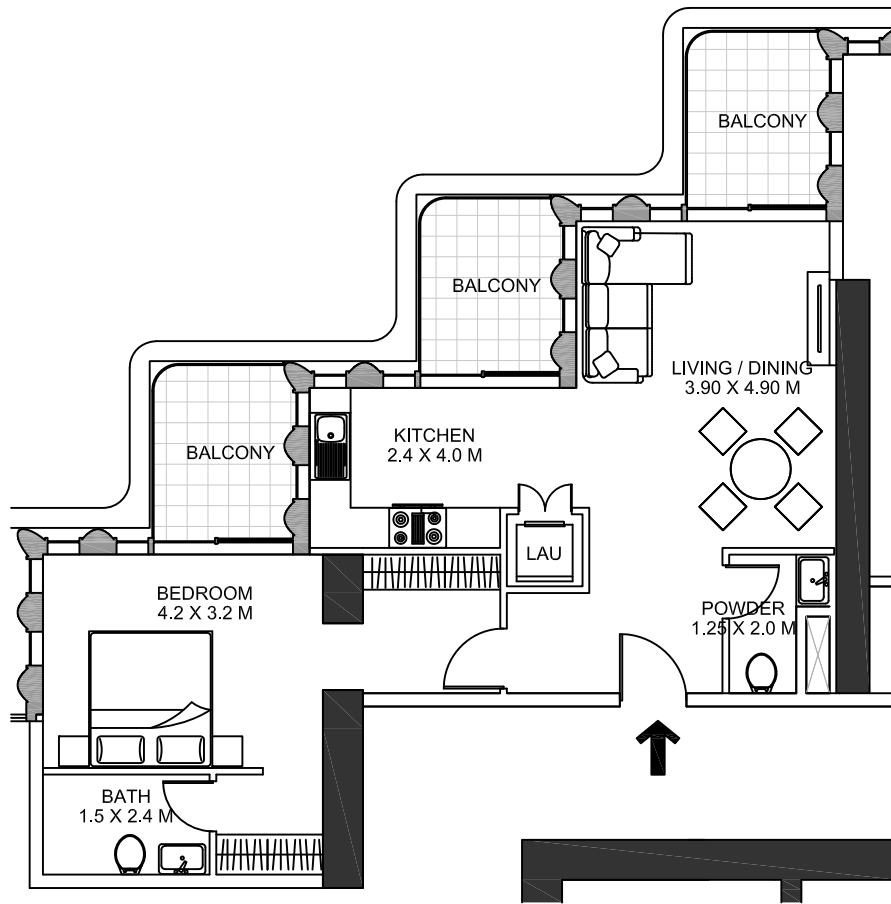
O N E · B
T O W E R



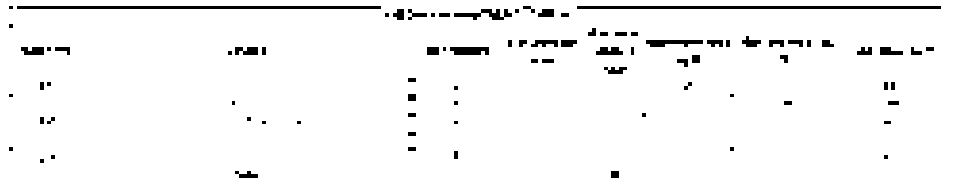
wasi

All room dimensions are in metric and measured to structural elements and exclude wall finishes and construction tolerances. Calculation of suite is measured as the area bounded by the centerline of demising or party walls separating one unit from another unit, the exterior surface of all exterior walls and the exterior surface of the corridor wall on enclosing and abutting the unit. Calculation of terrace area is measured as the area bounded by the centerlines of demising or party walls separating one unit from another unit, the outermost face of the enclosing guard and the external face of the site abutting the balcony. All materials, dimensions and drawings features and amenities are approximate at the line of printing. Information is subject to change without notice. Actual suite areas may vary from the stated area. Drawings are not to scale EXEEO. The developer reserves the right to make revisions.

Unit Layout - 1B/Type D

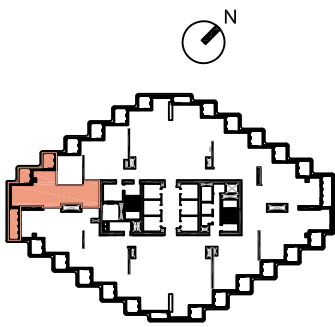
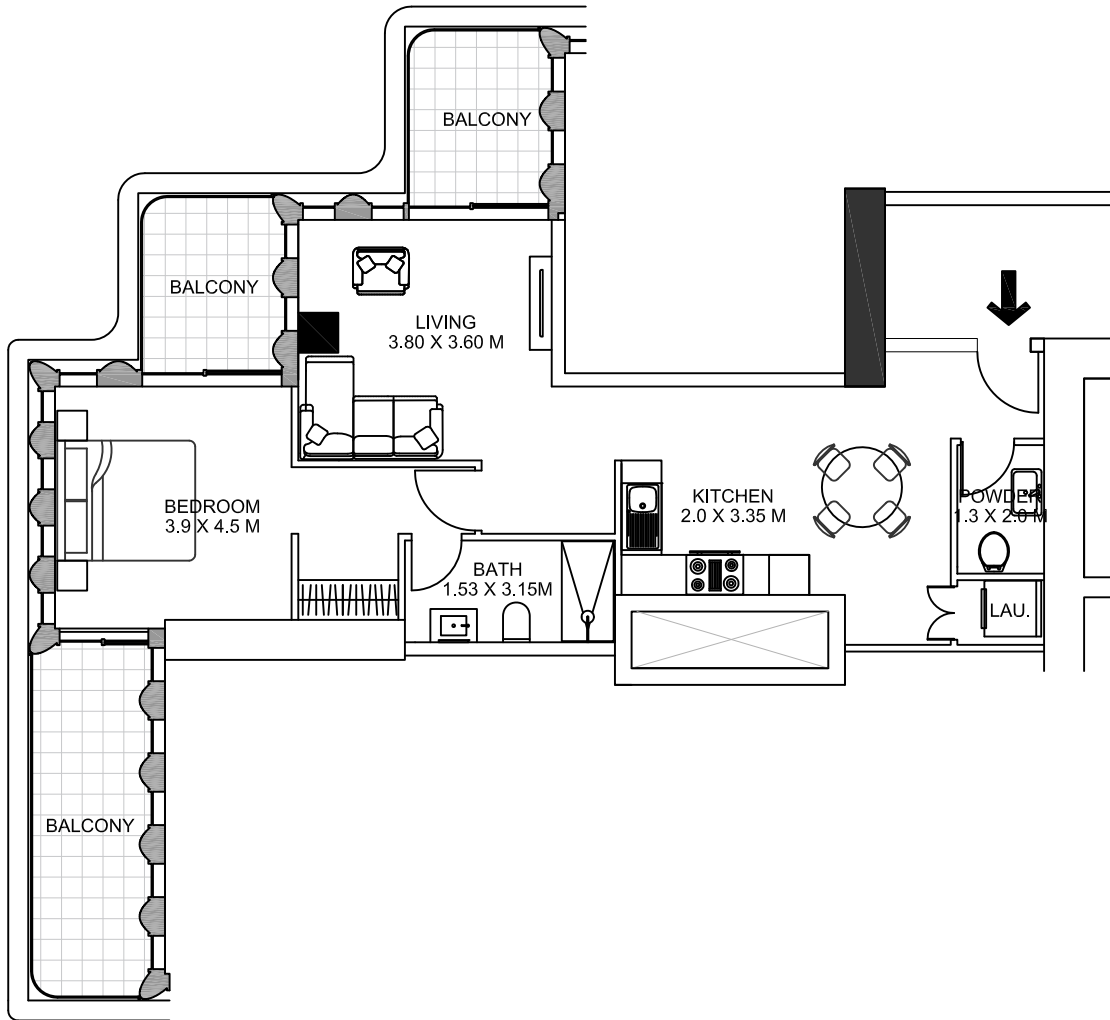


Key Plan

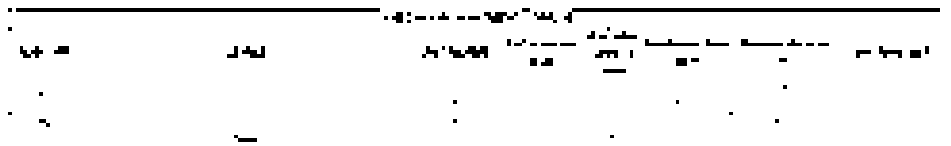


Unit Layout - 1B/Type E

ONE · B
TOWER



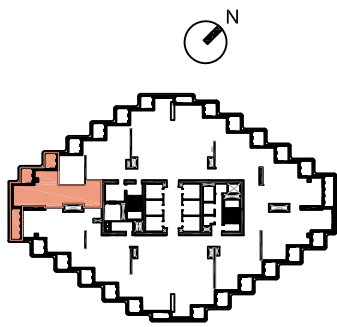
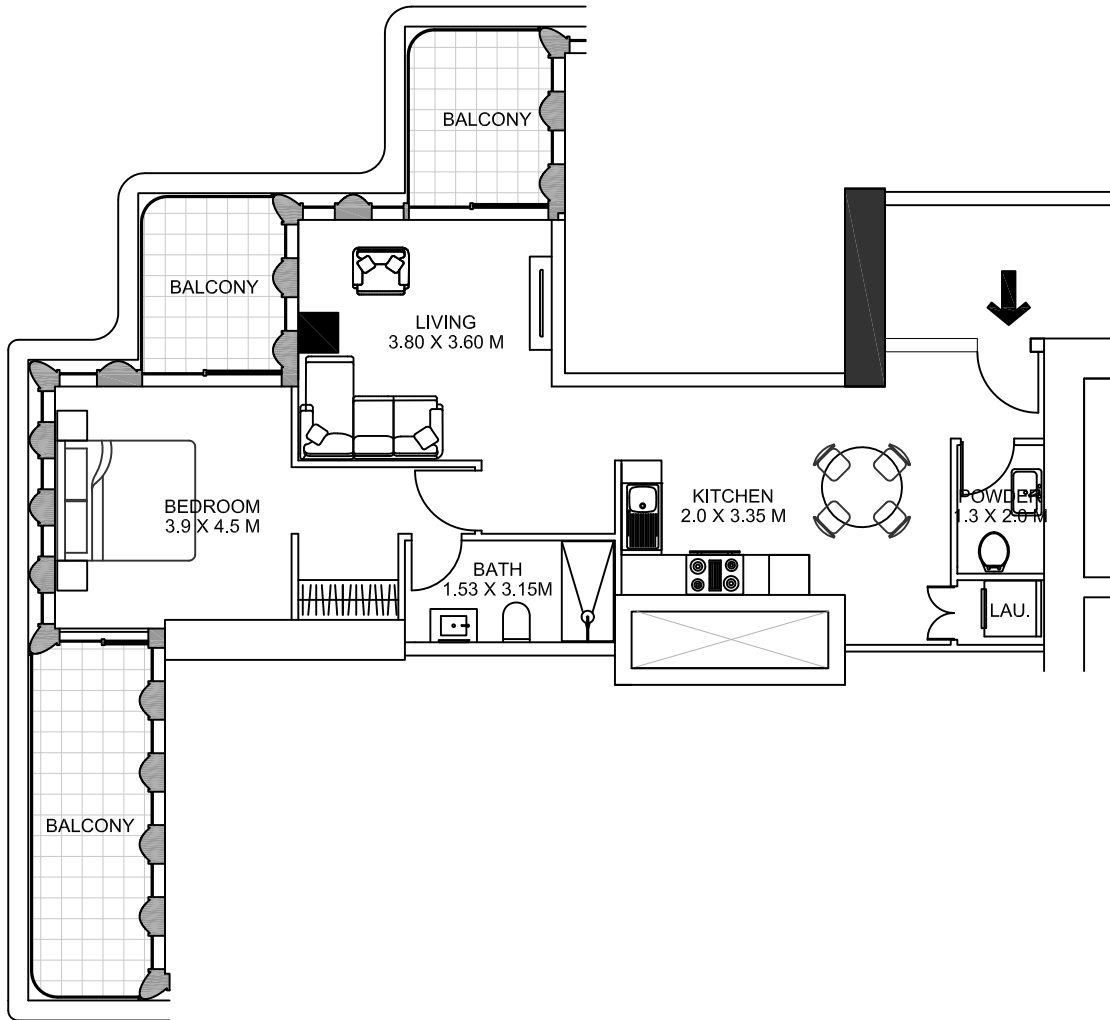
Key Plan



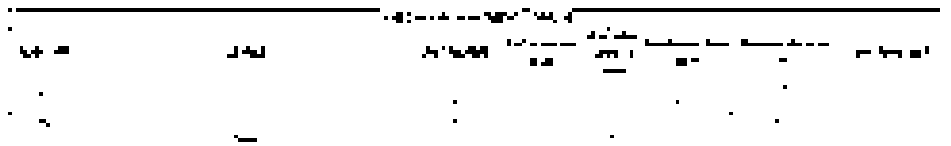
wasl

All room dimensions are in metric and measured to structural elements and exclude wall finishes and construction tolerances. Calculation of suite is measured as the area bounded by the centerline of demising or party walls separating one unit from another unit, the exterior surface of all exterior walls and the exterior surface of the corridor wall on enclosing and abutting the unit. Calculation of terrace area is measured as the area bounded by the centerlines of demising or party walls separating one unit from another unit, the outermost face of the enclosing guard and the external face of the site abutting the balcony. All materials, dimensions and drawings features and amenities are approximate at the line of printing. Information is subject to change without notice. Actual suite areas may vary from the stated area. Drawings are not to scale EXEEO. The developer reserves the right to make revisions.

Unit Layout - 1B/Type E



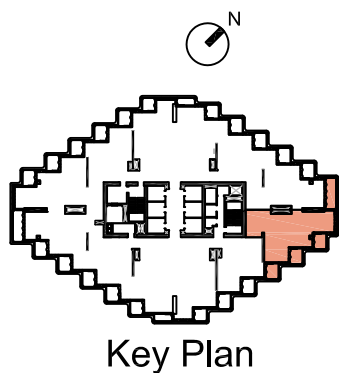
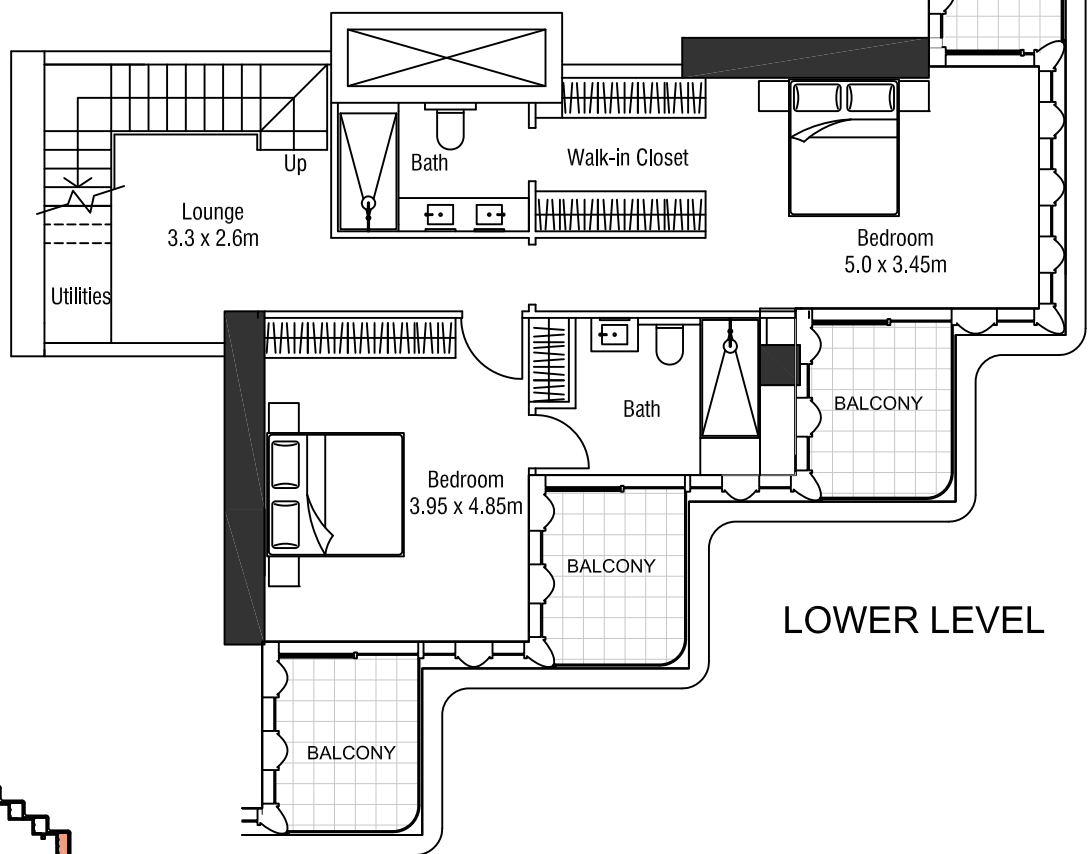
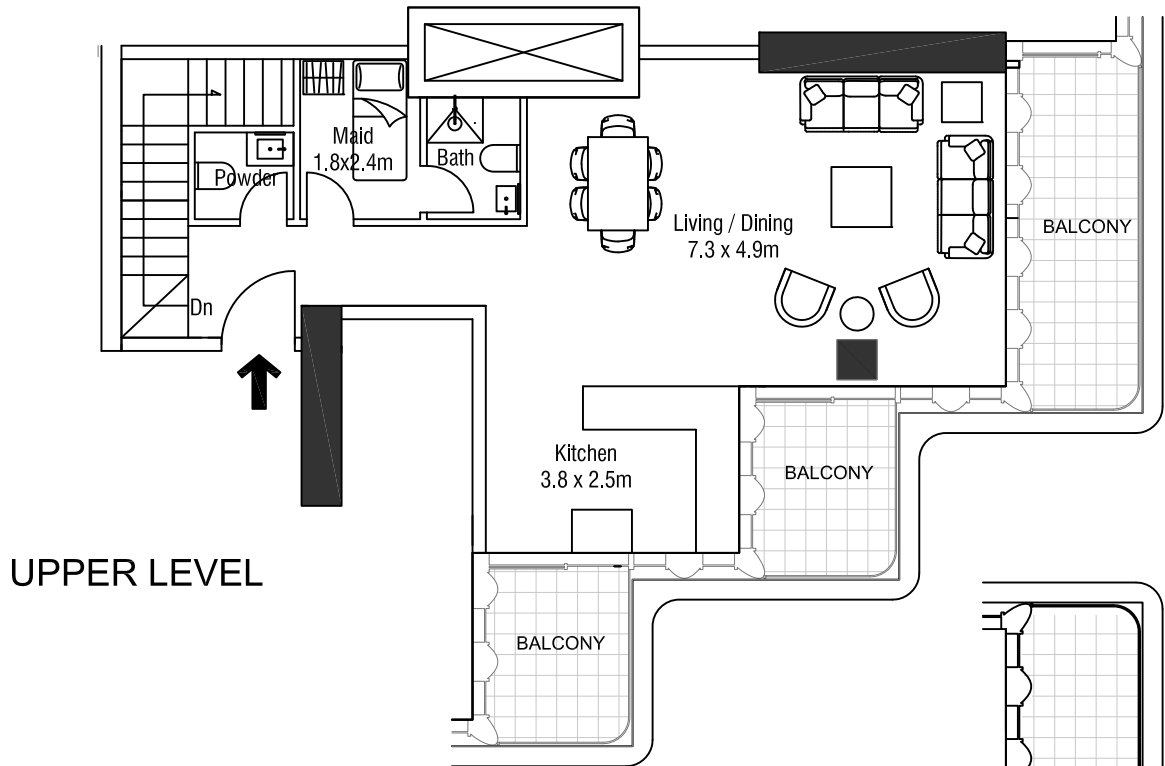
Key Plan



All room dimensions are in metric and measured to structural elements and exclude wall finishes and construction tolerances. Calculation of suite is measured as the area bounded by the centerline of demising or party walls separating one unit from another unit, the exterior surface of all exterior walls and the exterior surface of the corridor wall on enclosing and abutting the unit. Calculation of terrace area is measured as the area bounded by the centerlines of demising or party walls separating one unit from another unit, the outermost face of the enclosing guard and the external face of the site abutting the balcony. All materials, dimensions and drawings features and amenities are approximate at the line of printing. Information is subject to change without notice. Actual suite areas may vary from the stated area. Drawings are not to scale EXEEO. The developer reserves the right to make revisions.

Unit Layout - 2B-DUPLEX Type A

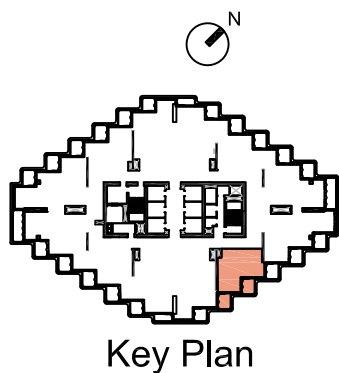
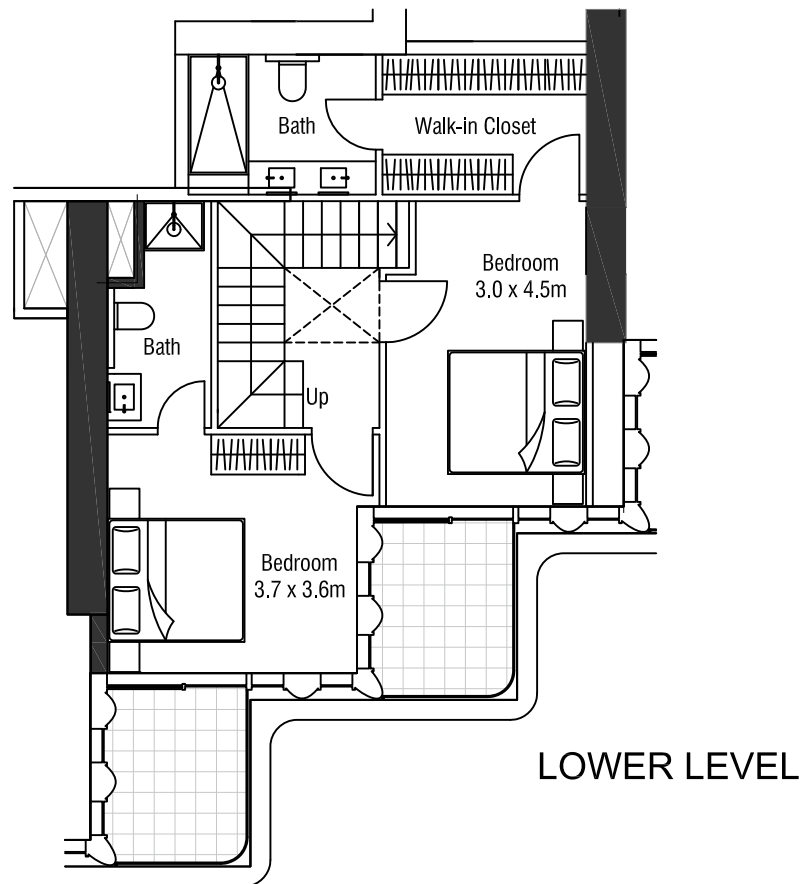
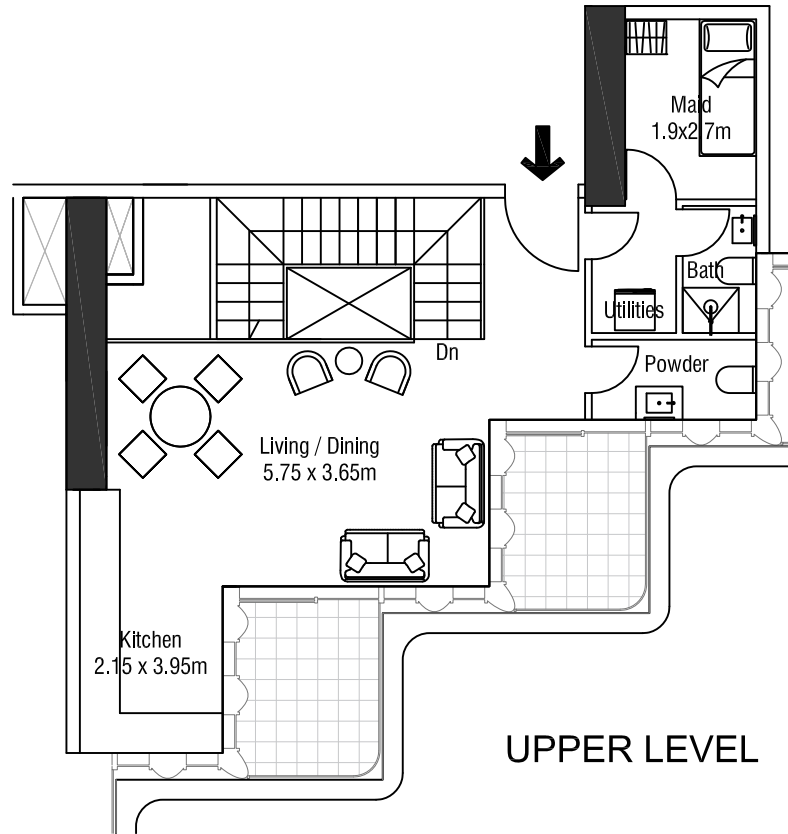
O N E · B
T O W E R



All room dimensions are in metric and measured to structural elements and exclude wall finishes and construction tolerances. Calculation of suite is measured as the area bounded by the centerline of demising or party walls separating one unit from another unit, the exterior surface of all exterior walls and the exterior surface of the corridor wall on enclosing and abutting the unit. Calculation of terrace area is measured as the area bounded by the centerlines of demising or party walls separating one unit from another unit, the outermost face of the enclosing guard and the external face of the site abutting the balcony. All materials, dimensions and drawings features and amenities are approximate at the line of printing. Information is subject to change without notice. Actual suite areas may vary from the stated area. Drawings are not to scale EXEEO. The developer reserves the right to make revisions.

Unit Layout - 2B-DUPLEX Type B

O N E · B
T O W E R

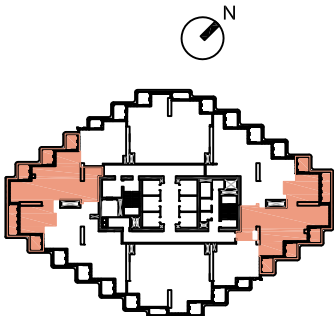
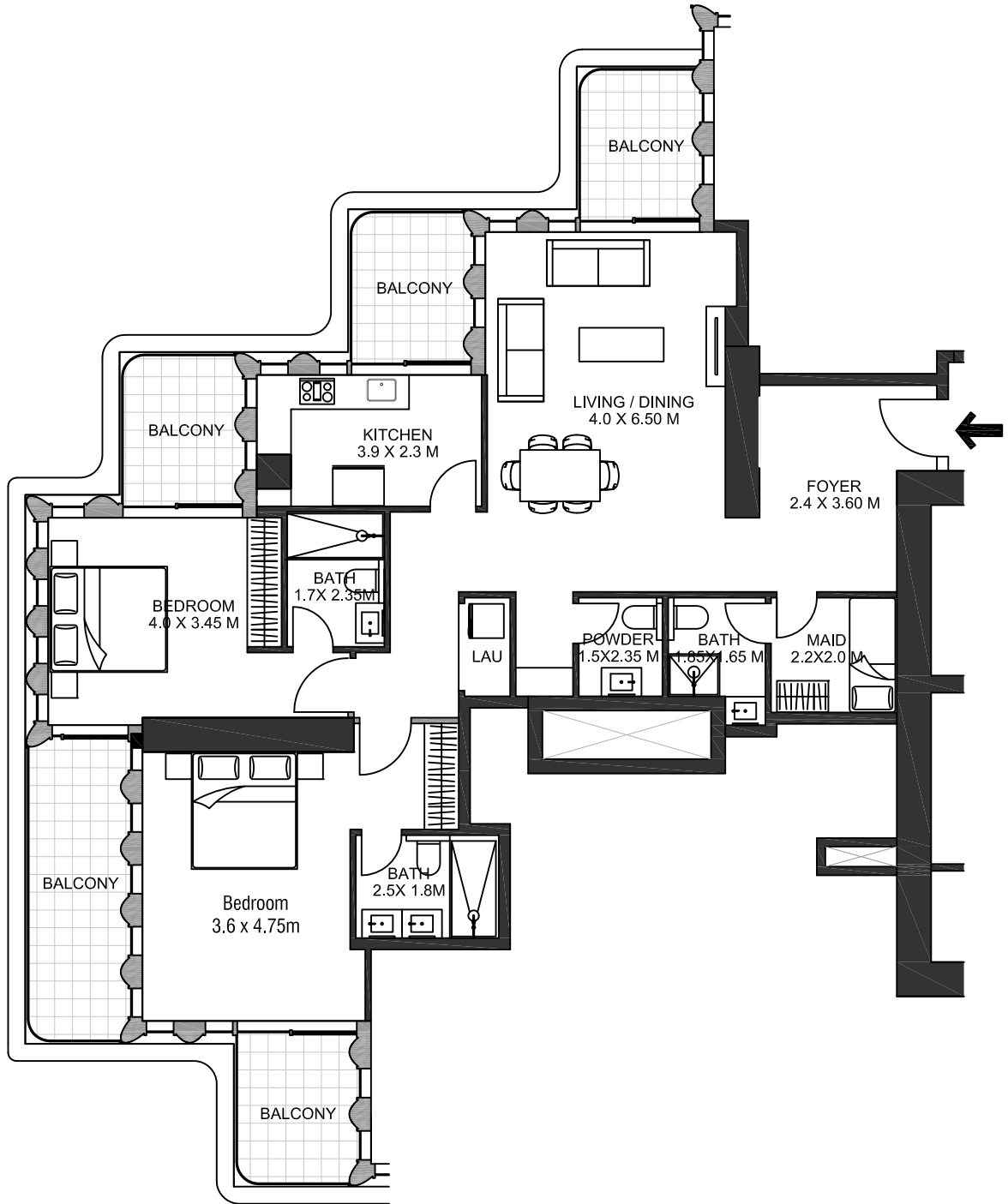


wasl

All room dimensions are in metric and measured to structural elements and exclude wall finishes and construction tolerances. Calculation of suite is measured as the area bounded by the centerline of demising or party walls separating one unit from another unit, the exterior surface of all exterior walls and the exterior surface of the corridor wall on enclosing and abutting the unit. Calculation of terrace area is measured as the area bounded by the centerlines of demising or party walls separating one unit from another unit, the outermost face of the site abutting the balcony, the external face of the site abutting the balcony, and the external face of the site abutting the balcony. Information is subject to change without notice. Actual suite areas may vary from the stated area. Drawings are not to scale EXEEO. The developer reserves the right to make revisions.

Unit Layout - 2B/Type A

ONE · B
TOWER

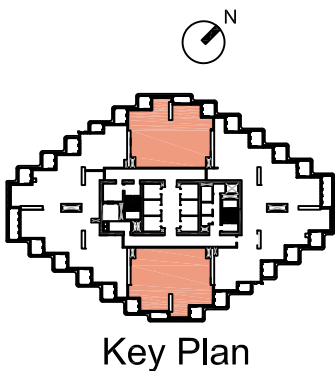
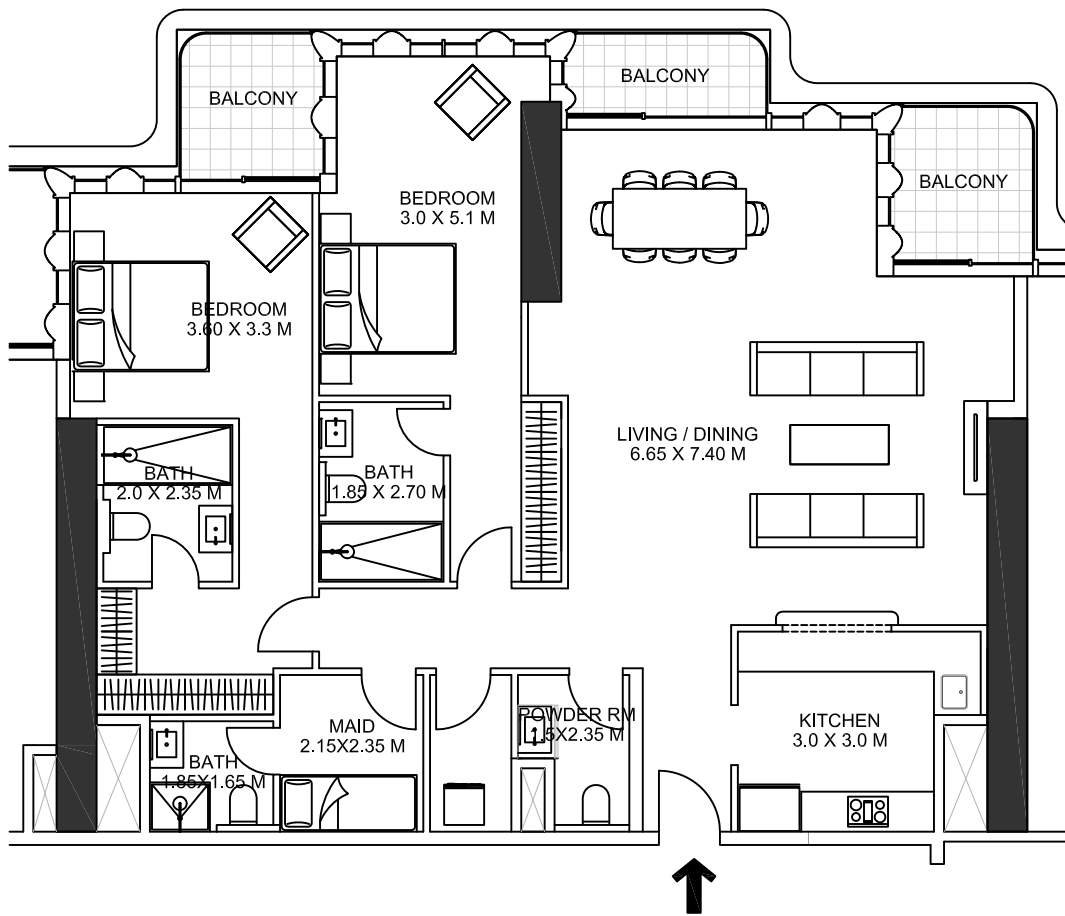


Key Plan

wasl

All room dimensions are in metric and measured to structural elements and exclude wall finishes and construction tolerances. Calculation of suite is measured as the area bounded by the centerline of demising or party walls separating one unit from another unit, the exterior surface of all exterior walls and the exterior surface of the corridor wall on enclosing and abutting the unit. Calculation of terrace area is measured as the area bounded by the centerlines of demising or party walls separating one unit from another unit, the outermost face of the enclosing guard and the external face of the site abutting the balcony. All materials, dimensions and drawings features and amenities are approximate at the line of printing. Information is subject to change without notice. Actual suite areas may vary from the stated area. Drawings are not to scale EXEEO. The developer reserves the right to make revisions.

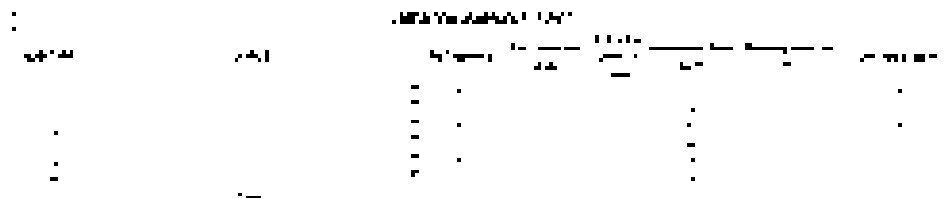
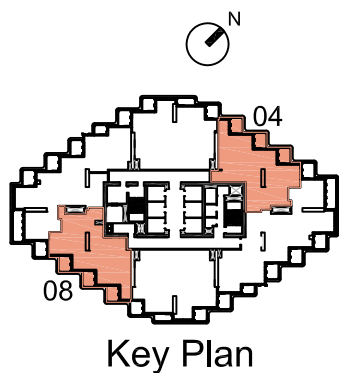
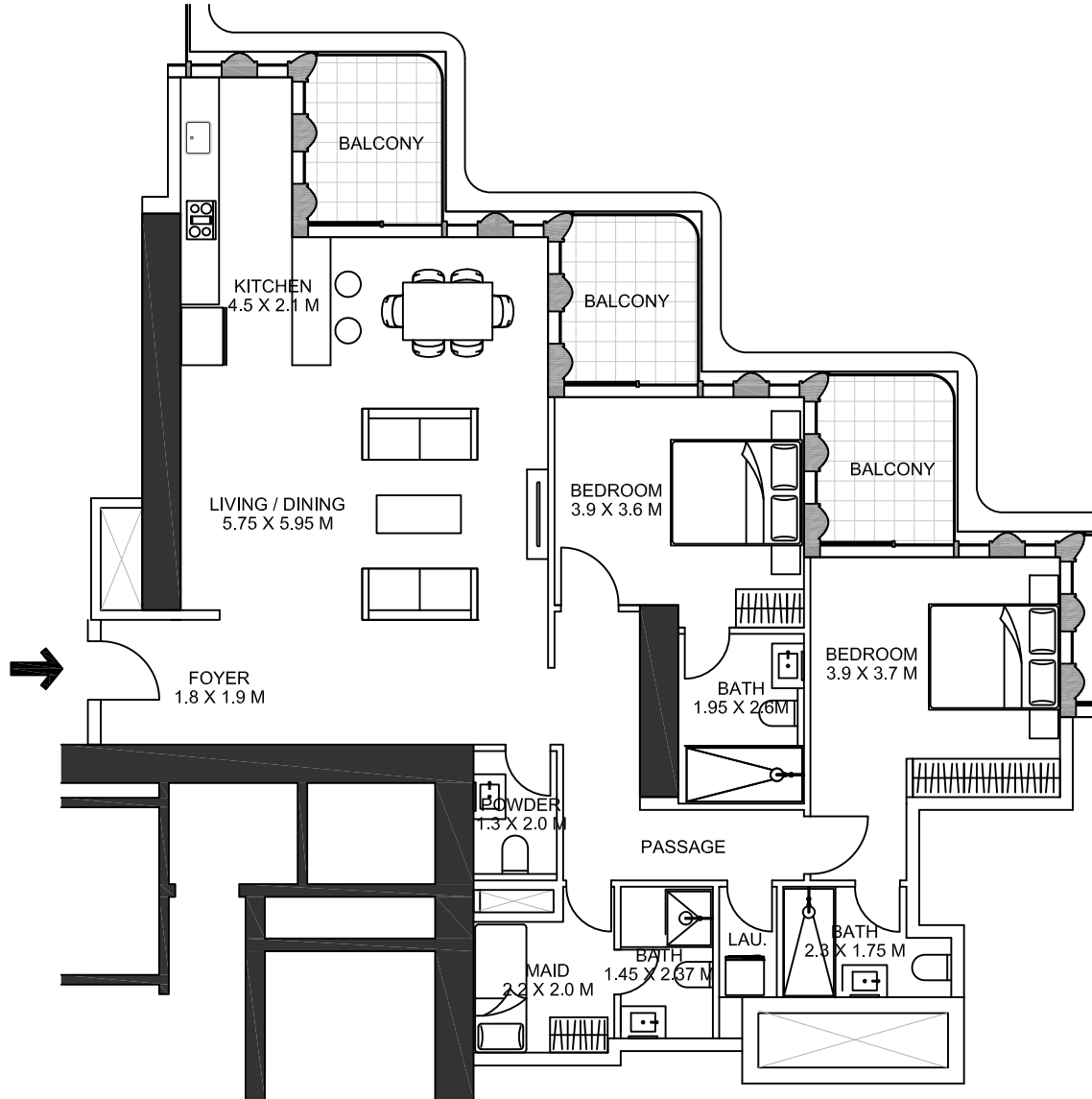
Unit Layout - 2B/Type B



All room dimensions are in metric and measured to structural elements and exclude wall finishes and construction tolerances. Calculation of suite is measured as the area bounded by the centerline of demising or party walls separating one unit from another unit, the exterior surface of all exterior walls and the exterior surface of the corridor wall on enclosing and abutting the unit. Calculation of terrace area is measured as the area bounded by the centerlines of demising or party walls separating one unit from another unit, the outermost face of the enclosing guard and the external face of the site abutting the balcony. All materials, dimensions and drawings features and amenities are approximate at the line of printing. Information is subject to change without notice. Actual suite areas may vary from the stated area. Drawings are not to scale EXEEO. The developer reserves the right to make revisions.

Unit Layout - 2B/Type C1

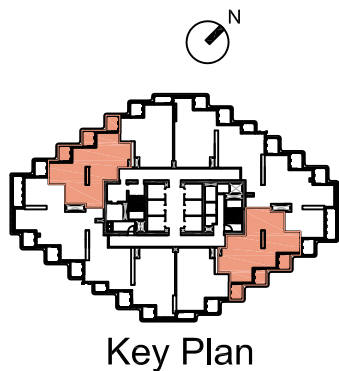
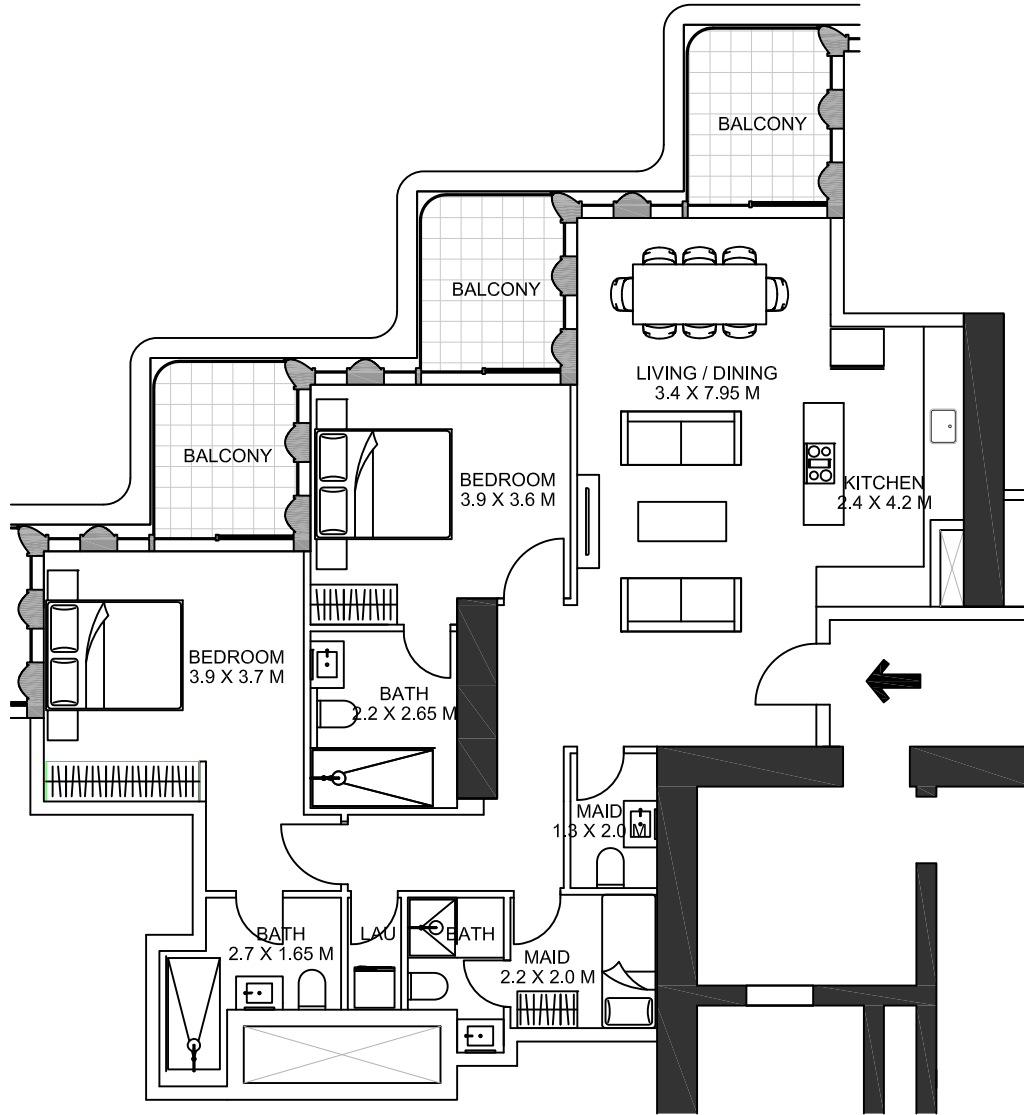
ONE · B
TOWER



wasl

All room dimensions are in metric and measured to structural elements and exclude wall finishes and construction tolerances. Calculation of suite is measured as the area bounded by the centerline of demising or party walls separating one unit from another unit, the exterior surface of all exterior walls and the exterior surface of the corridor wall on enclosing and abutting the unit. Calculation of terrace area is measured as the area bounded by the centerlines of demising or party walls separating one unit from another unit, the outermost face of the enclosing guard and the external face of the site abutting the balcony. All materials, dimensions and drawings features and amenities are approximate at the line of printing. Information is subject to change without notice. Actual suite areas may vary from the stated area. Drawings are not to scale EXEEO. The developer reserves the right to make revisions.

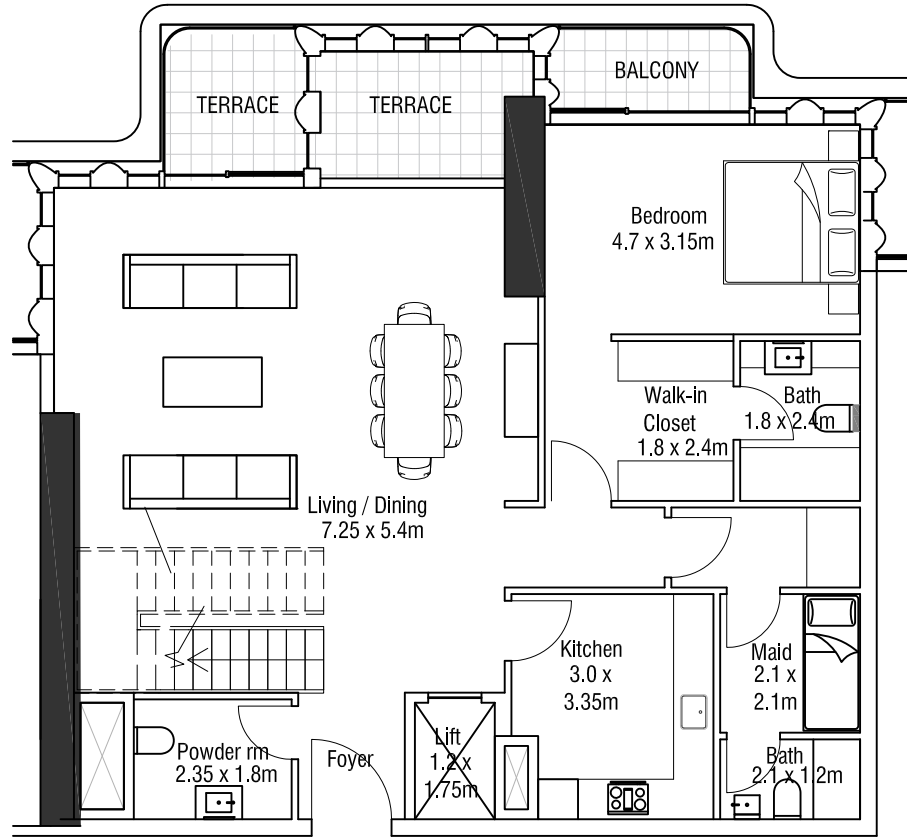
Unit Layout - 2B/Type C4



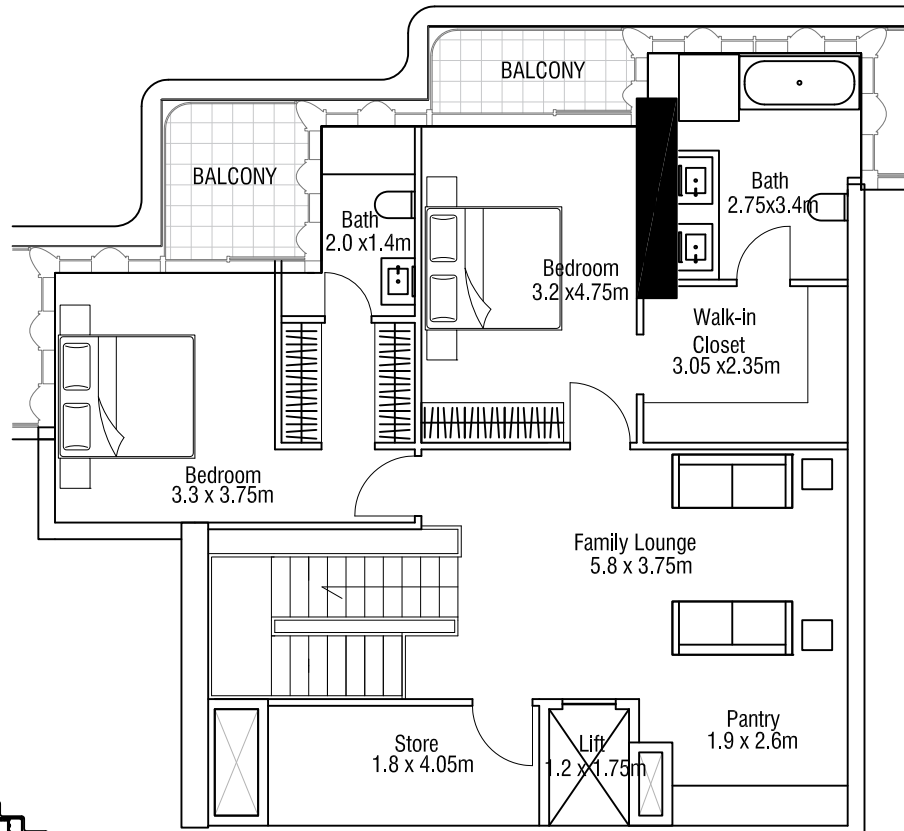
Key Plan

Unit Layout - 3B-D/Type A

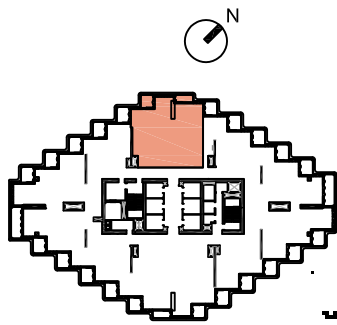
ONE · B
TOWER



LOWER LEVEL



UPPER LEVEL



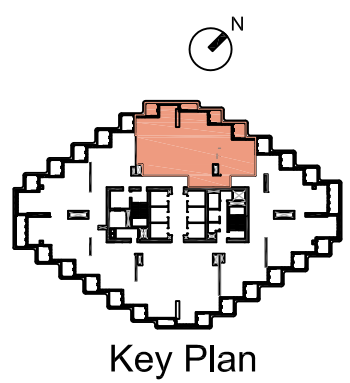
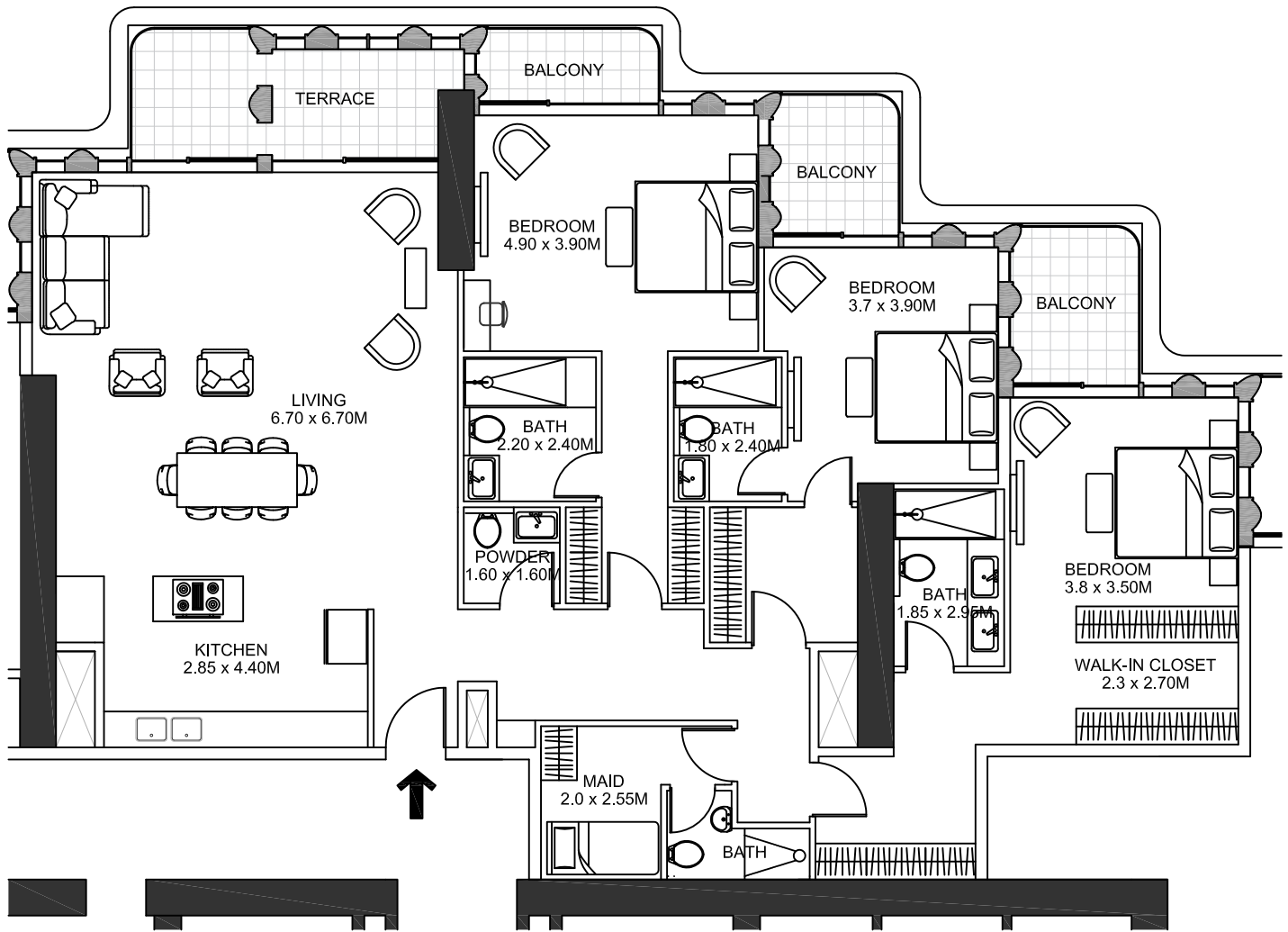
Key Plan

wasl

All room dimensions are in metric and measured to structural elements and exclude wall finishes and construction tolerances. Calculation of suite is measured as the area bounded by the centerline of demarcating or party walls separating one unit from another unit, the exterior surface of all exterior walls and the exterior surface of the corridor wall on enclosing and abutting the unit. Calculation of terrace area is measured as the area bounded by the centerlines of demarcating or party walls separating one unit from another unit, the outermost face of the enclosing guard and the external face of the site abutting the balcony. All materials, dimensions and drawings features and amenities are approximate at the time of printing. Information is subject to change without notice. Actual suite areas may vary from the stated areas. Drawings are not to scale EXE0. The developer reserves the right to make revisions.

Unit Layout - 3B/Type A

ONE · B
TOWER

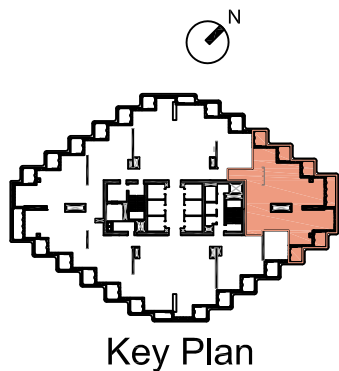
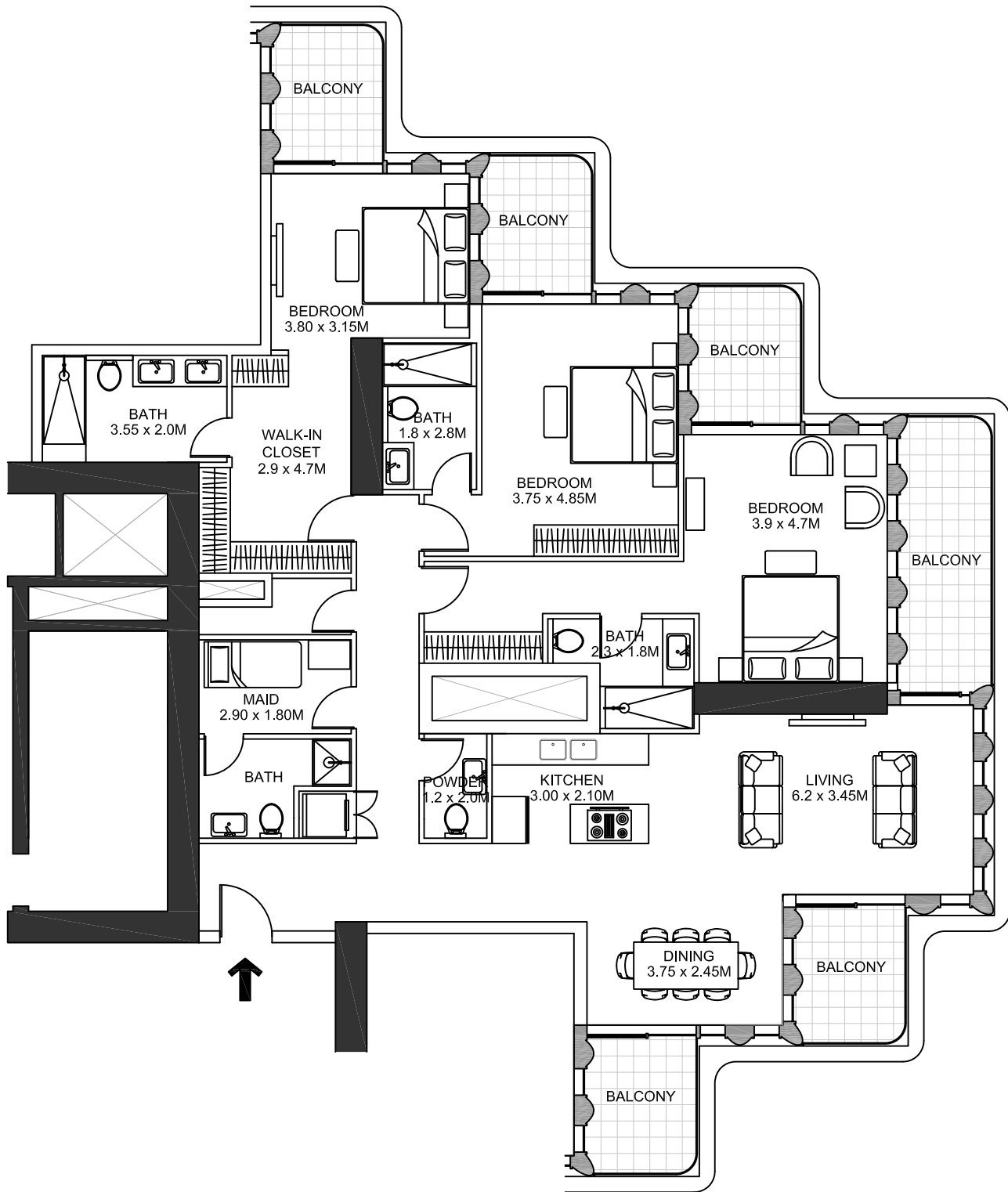


wasl

All room dimensions are in metric and measured to structural elements and exclude wall finishes and construction tolerances. Calculation of suite is measured as the area bounded by the centerline of demising or party walls separating one unit from another unit, the exterior surface of all exterior walls and the exterior surface of the corridor wall on enclosing and abutting the unit. Calculation of terrace area is measured as the area bounded by the centerlines of demising or party walls separating one unit from another unit, the outermost face of the enclosing guard and the external face of the site abutting the balcony. All materials, dimensions and drawings features and amenities are approximate at the line of printing. Information is subject to change without notice. Actual suite areas may vary from the stated area. Drawings are not to scale EXEEO. The developer reserves the right to make revisions.

Unit Layout - 3B/Type B

ONE · B
TOWER

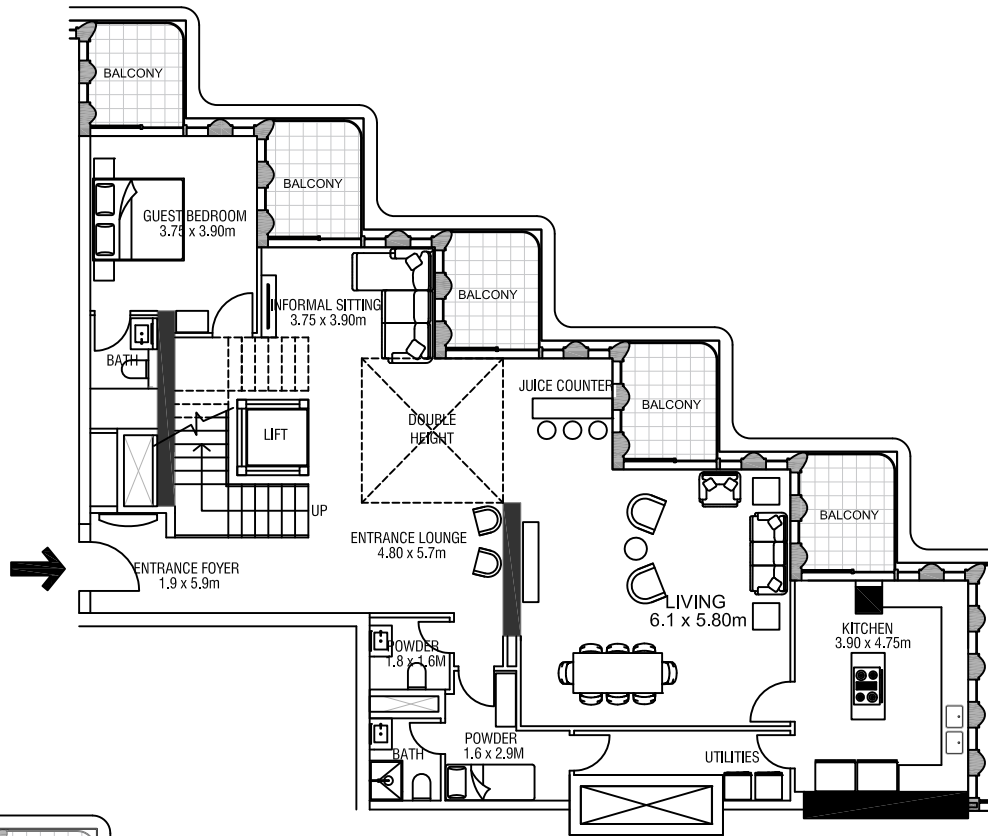


wasl

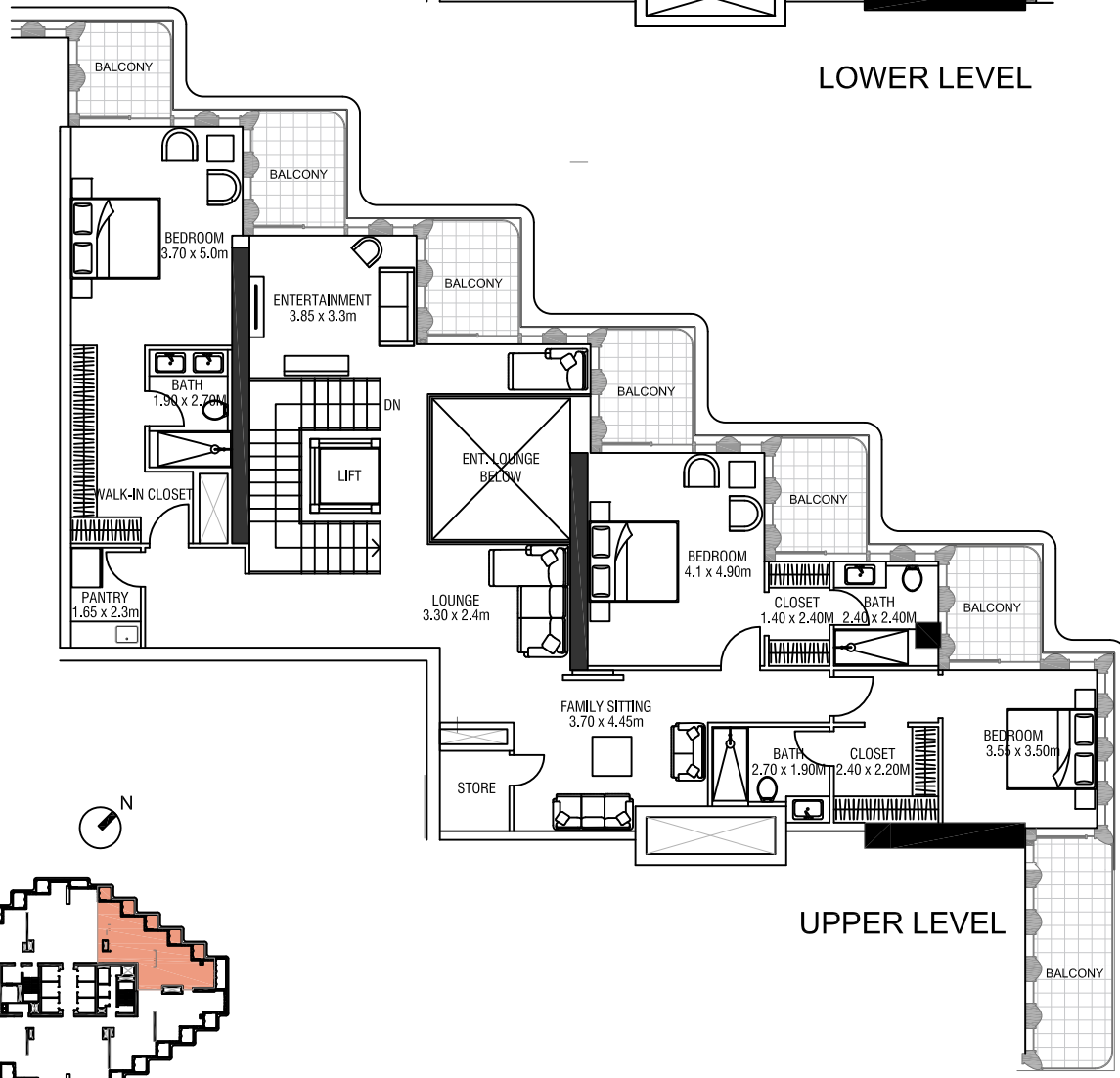
All room dimensions are in metric and measured to structural elements and exclude wall finishes and construction tolerances. Calculation of suite is measured as the area bounded by the centerline of demising or party walls separating one unit from another unit, the exterior surface of all exterior walls and the exterior surface of the corridor wall on enclosing and abutting the unit. Calculation of terrace area is measured as the area bounded by the centerlines of demising or party walls separating one unit from another unit, the outermost face of the enclosing guard and the external face of the site abutting the balcony. All materials, dimensions and drawings features and amenities are approximate at the line of printing. Information is subject to change without notice. Actual suite areas may vary from the stated area. Drawings are not to scale EXEEO. The developer reserves the right to make revisions.

Unit Layout - 4B-DUPLEX/Type A

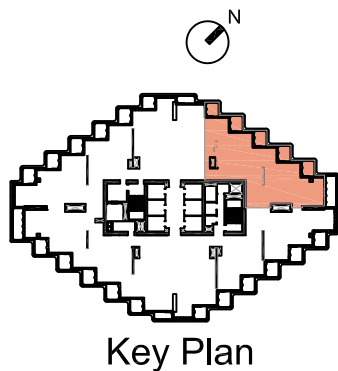
O N E · B
T O W E R



LOWER LEVEL

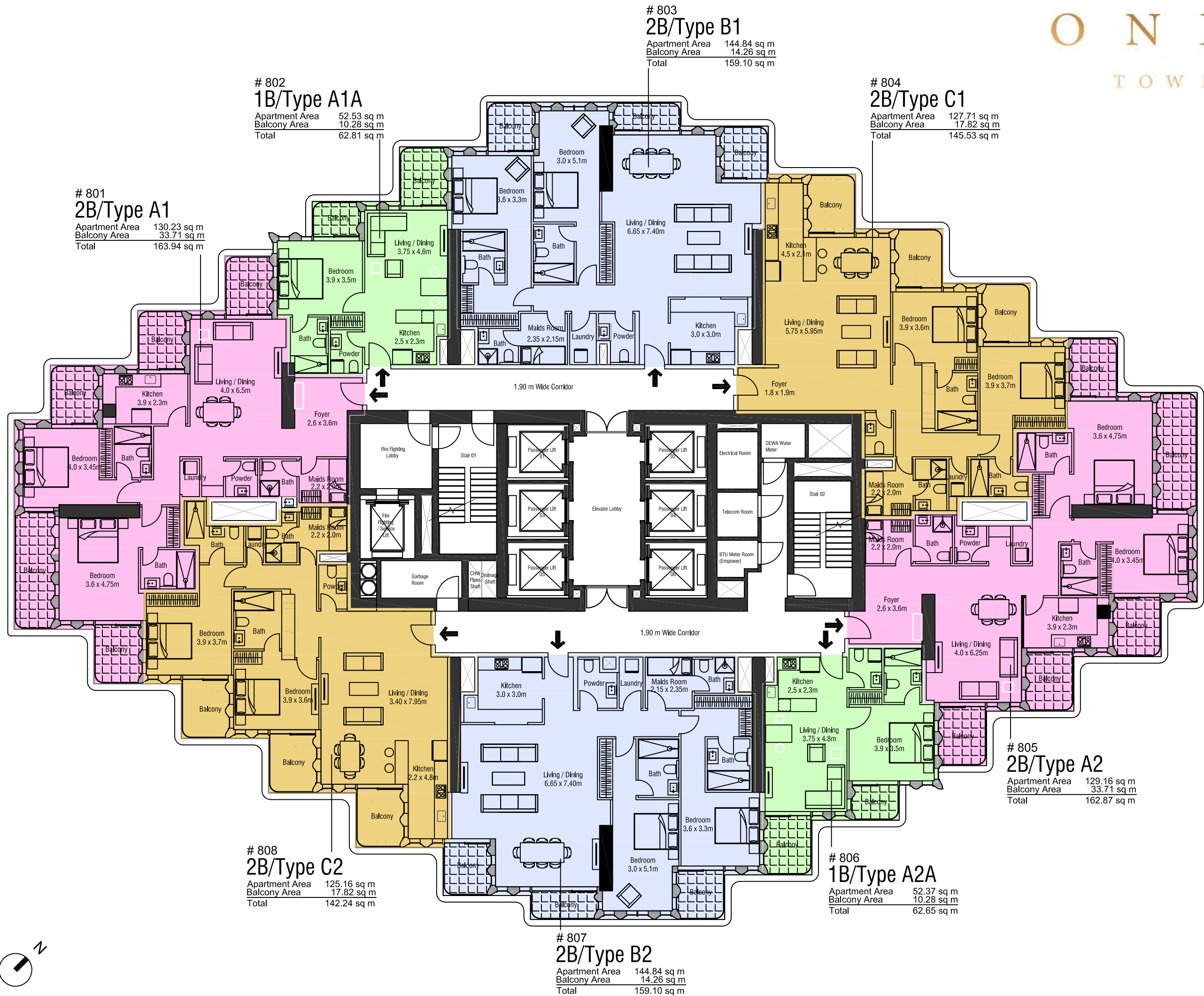


UPPER LEVEL



wasl

All room dimensions are in metric and measured to structural elements and exclude wall finishes and construction tolerances. Calculation of suite is measured as the area bounded by the centerline of demising or party walls separating one unit from another unit, the exterior surface of all exterior walls and the exterior surface of the corridor wall on enclosing and abutting the unit. Calculation of terrace area is measured as the area bounded by the centerlines of demising or party walls separating one unit from another unit, the outermost face of the enclosing guard and the external face of the site abutting the balcony. All materials, dimensions and drawings features and amenities are approximate at the line of printing. Information is subject to change without notice. Actual suite areas may vary from the stated area. Drawings are not to scale EXEEO. The developer reserves the right to make revisions.



801
2B/Type A1
Apartment Area 130.23 sq m
Balcony Area 33.71 sq m
Total 163.94 sq m

802
1B/Type A1A
Apartment Area 52.53 sq m
Balcony Area 10.28 sq m
Total 62.81 sq m

803
2B/Type B1
Apartment Area 144.84 sq m
Balcony Area 14.26 sq m
Total 159.10 sq m

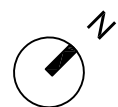
804
2B/Type C1
Apartment Area 127.71 sq m
Balcony Area 17.82 sq m
Total 145.53 sq m

805
2B/Type A2
Apartment Area 129.16 sq m
Balcony Area 33.71 sq m
Total 162.87 sq m

808
2B/Type C2
Apartment Area 125.16 sq m
Balcony Area 17.82 sq m
Total 142.24 sq m

806
1B/Type A2A
Apartment Area 52.37 sq m
Balcony Area 10.28 sq m
Total 62.65 sq m

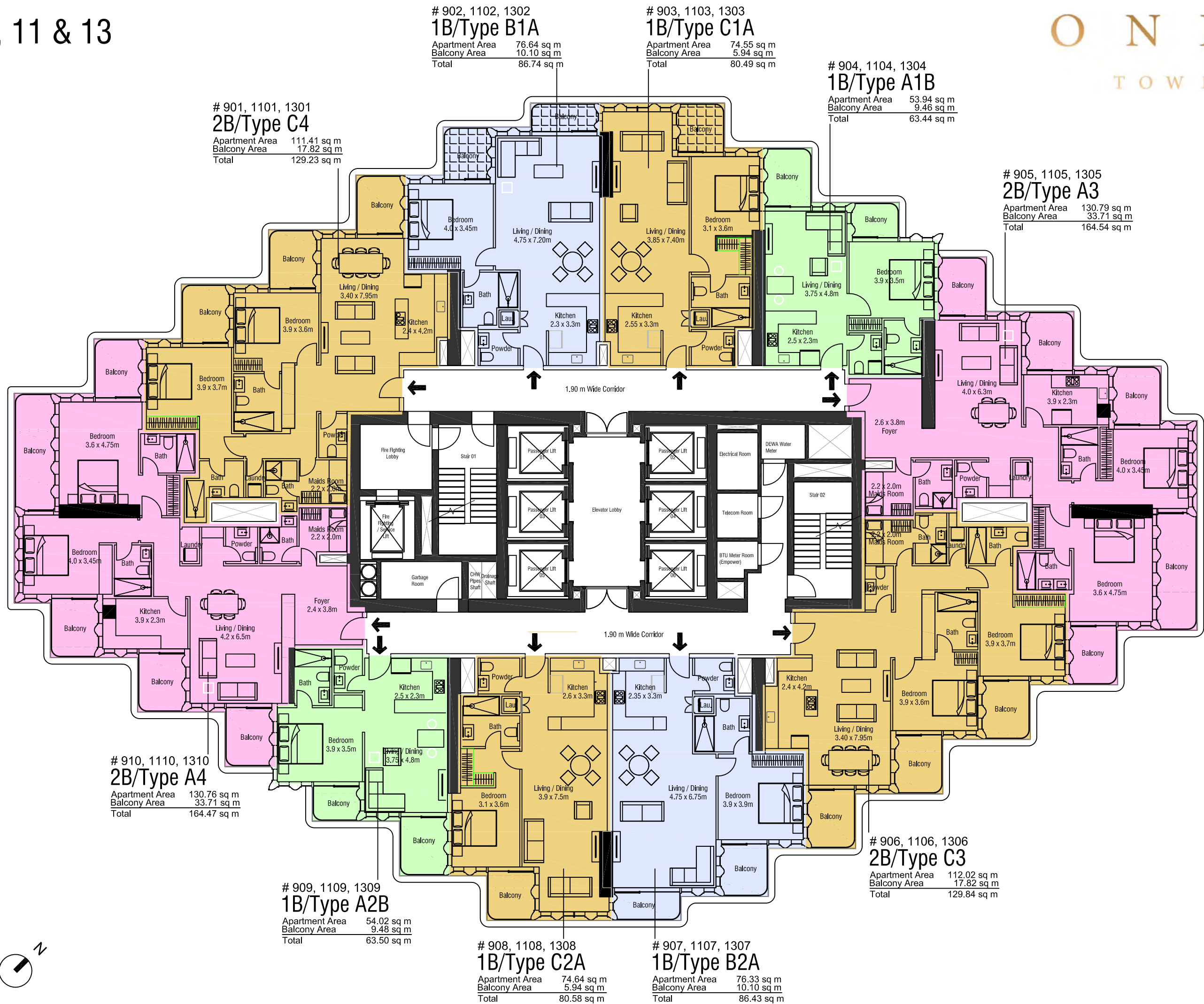
807
2B/Type B2
Apartment Area 144.84 sq m
Balcony Area 14.26 sq m
Total 159.10 sq m



All room dimensions are in metric and measured to structural elements and exclude wall finishes and construction tolerances. Calculation of suite is measured as the area bounded by the centerline of demising or party walls separating one unit from another unit, the exterior surface of all exterior walls and the exterior surface of the corridor wall on enclosing and abutting the unit. Calculation of terrace area is measured as the area bounded by the centerlines of demising or party walls separating one unit from another unit, the outermost face of the enclosing guard and the external face of the site abutting the balcony. All materials, dimensions and drawings features and amenities are approximate at the time of printing, information is subject to change without notice. Actual suite areas may vary from the stated area. Drawings are not to scale E&EC. The developer reserves the right to make revisions.

Level 9, 11 & 13

O N E · B T O W E R



901, 1101, 1301
2B/Type C4
Apartment Area 111.41 sq m
Balcony Area 17.82 sq m
Total 129.23 sq m

902, 1102, 1302
1B/Type B1A
Apartment Area 76.64 sq m
Balcony Area 10.10 sq m
Total 86.74 sq m

903, 1103, 1303
1B/Type C1A
Apartment Area 74.55 sq m
Balcony Area 5.94 sq m
Total 80.49 sq m

904, 1104, 1304
1B/Type A1B
Apartment Area 53.94 sq m
Balcony Area 9.46 sq m
Total 63.44 sq m

905, 1105, 1305
2B/Type A3
Apartment Area 130.79 sq m
Balcony Area 33.71 sq m
Total 164.54 sq m

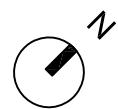
910, 1110, 1310
2B/Type A4
Apartment Area 130.76 sq m
Balcony Area 33.71 sq m
Total 164.47 sq m

909, 1109, 1309
1B/Type A2B
Apartment Area 54.02 sq m
Balcony Area 9.48 sq m
Total 63.50 sq m

908, 1108, 1308
1B/Type C2A
Apartment Area 74.64 sq m
Balcony Area 5.94 sq m
Total 80.58 sq m

907, 1107, 1307
1B/Type B2A
Apartment Area 76.33 sq m
Balcony Area 10.10 sq m
Total 86.43 sq m

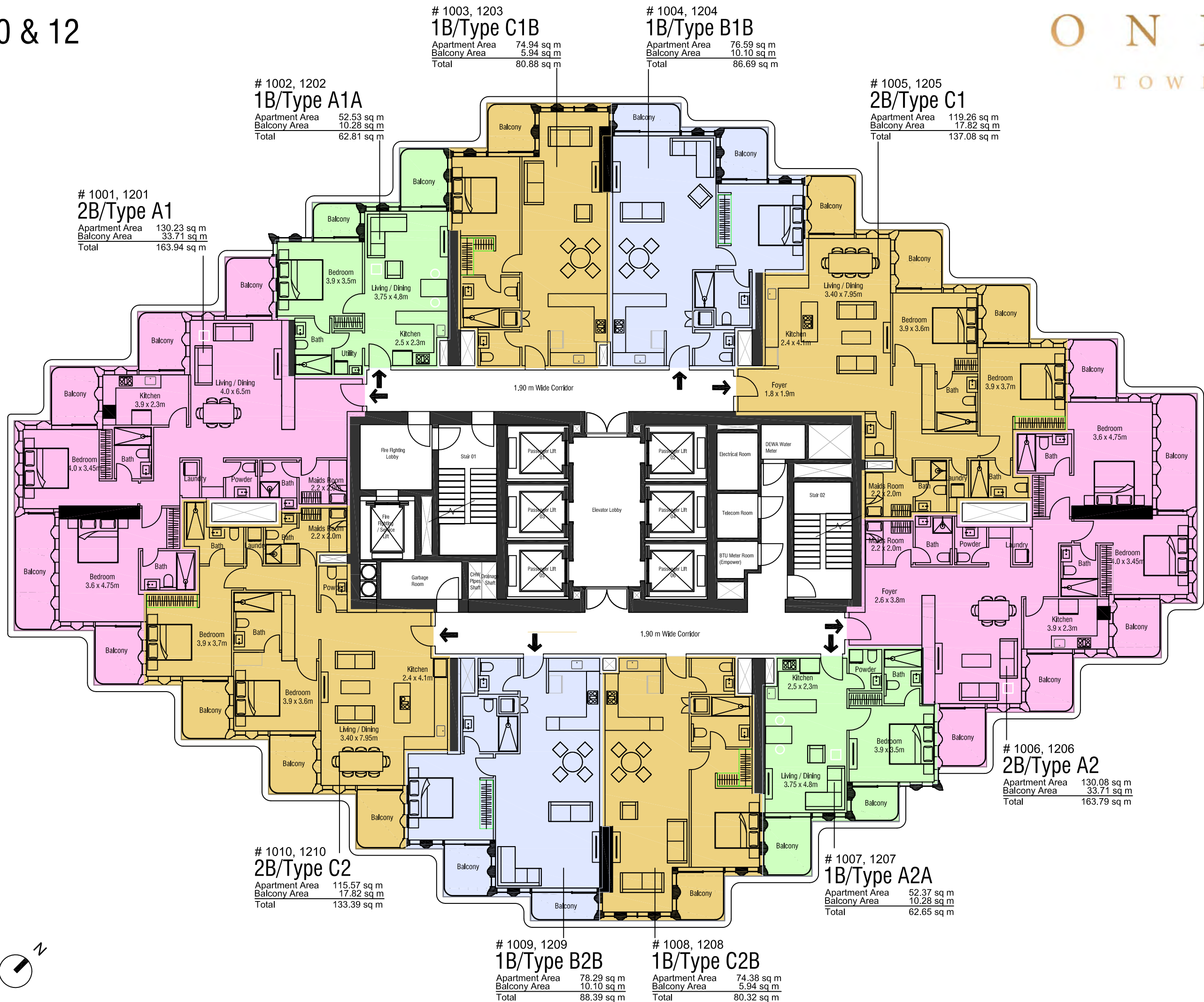
906, 1106, 1306
2B/Type C3
Apartment Area 112.02 sq m
Balcony Area 17.82 sq m
Total 129.84 sq m



All room dimensions are in metric and measured to structural elements and exclude wall finishes and construction tolerances. Calculation of suite is measured as the area bounded by the centerline of demising or party walls separating one unit from another unit, the outermost face of the site abutting the balcony, the outermost face of the site abutting the balcony, the exterior surface of all exterior walls and the exterior surface of the corridor wall on enclosing and abutting the unit. Calculation of terrace area is measured as the area bounded by the centerlines of demising or party walls separating one unit from another unit, the outermost face of the site abutting the balcony. All materials, dimensions and drawings features and amenities are approximate at the time of printing, information is subject to change without notice. Actual suite areas may vary from the stated area. Drawings are not to scale E&EO. The developer reserves the right to make revisions.

Level 10 & 12

O N E · B T O W E R



1001, 1201
2B/Type A1
Apartment Area 130.23 sq m
Balcony Area 33.71 sq m
Total 163.94 sq m

1002, 1202
1B/Type A1A
Apartment Area 52.53 sq m
Balcony Area 10.28 sq m
Total 62.81 sq m

1003, 1203
1B/Type C1B
Apartment Area 74.94 sq m
Balcony Area 5.94 sq m
Total 80.88 sq m

1004, 1204
1B/Type B1B
Apartment Area 76.59 sq m
Balcony Area 10.10 sq m
Total 86.69 sq m

1005, 1205
2B/Type C1
Apartment Area 119.26 sq m
Balcony Area 17.82 sq m
Total 137.08 sq m

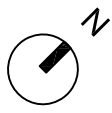
1006, 1206
2B/Type A2
Apartment Area 130.08 sq m
Balcony Area 33.71 sq m
Total 163.79 sq m

1010, 1210
2B/Type C2
Apartment Area 115.57 sq m
Balcony Area 17.82 sq m
Total 133.39 sq m

1007, 1207
1B/Type A2A
Apartment Area 52.37 sq m
Balcony Area 10.28 sq m
Total 62.65 sq m

1009, 1209
1B/Type B2B
Apartment Area 78.29 sq m
Balcony Area 10.10 sq m
Total 88.39 sq m

1008, 1208
1B/Type C2B
Apartment Area 74.38 sq m
Balcony Area 5.94 sq m
Total 80.32 sq m



All room dimensions are in metric and measured to structural elements and exclude wall finishes and construction tolerances. Calculation of suite is measured as the area bounded by the centerline of demising or party walls separating one unit from another unit, the exterior surface of all exterior walls and the exterior surface of the corridor wall on enclosing and abutting the unit. Calculation of terrace area is measured as the area bounded by the centerlines of demising or party walls separating one unit from another unit, the outermost face of the site abutting the balcony, the outermost face of the enclosing guard and the exterior face of the balcony. All materials, dimensions and drawings features and amenities are approximate at the time of printing, information is subject to change without notice. Actual suite areas may vary from the stated area. Drawings are not to scale E&EO. The developer reserves the right to make revisions.

Level 14,16,18

O N E · B T O W E R

1403, 1603, 1803
3B/Type A
Apartment Area = 207.17 sqm
Balcony Area = 20.53 sqm
Total = 227.82 sqm

1402, 1602, 1802
1B/Type D1
Apartment Area = 74.18 sqm
Balcony Area = 17.82 sqm
Total = 91.58 sqm

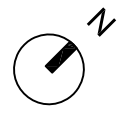
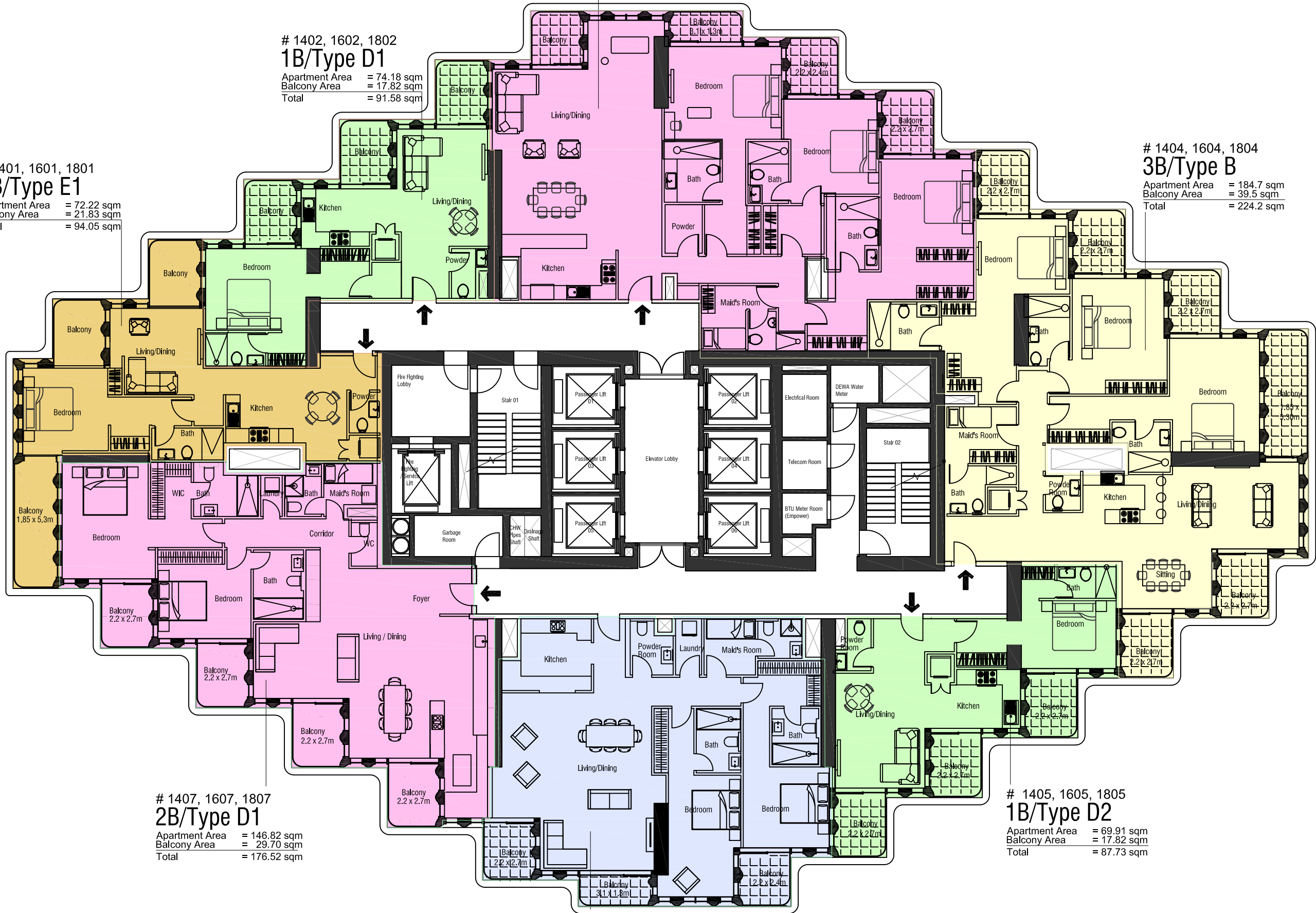
1401, 1601, 1801
1B/Type E1
Apartment Area = 72.22 sqm
Balcony Area = 21.83 sqm
Total = 94.05 sqm

1404, 1604, 1804
3B/Type B
Apartment Area = 184.7 sqm
Balcony Area = 39.5 sqm
Total = 224.2 sqm

1407, 1607, 1807
2B/Type D1
Apartment Area = 146.82 sqm
Balcony Area = 29.70 sqm
Total = 176.52 sqm

1405, 1605, 1805
1B/Type D2
Apartment Area = 69.91 sqm
Balcony Area = 17.82 sqm
Total = 87.73 sqm

1406, 1606, 1806
2B/Type B2
Apartment Area = 144.84 sqm
Balcony Area = 14.26 sqm
Total = 159.10 sqm



All room dimensions are in metric and measured to structural elements and exclude wall finishes and construction tolerances. Calculation of suite is measured as the area bounded by the centerline of demising or party walls separating one unit from another unit, the exterior surface of all exterior walls and the exterior surface of the corridor wall on enclosing and abutting the unit. Calculation of terrace area is measured as the area bounded by the centerlines of demising or party walls separating one unit from another unit, the outermost face of the site abutting the balcony. All materials, dimensions and drawings features and amenities are approximate at the time of printing, information is subject to change without notice. Actual suite areas may vary from the stated area. Drawings are not to scale E&EO. The developer reserves the right to make revisions.



Level 15,17,19

O N E · B T O W E R

1502, 1702, 1902 2B/Type B3

Apartment Area = 146.41 sqm
Balcony Area = 14.59 sqm
Total = 161 sqm

1503, 1703, 1903 3B/Type C

Apartment Area = 168.4 sqm
Balcony Area = 29.7 sqm
Total = 198.1 sqm

1501, 1701, 1901 2B/Type D2

Apartment Area = 153.24 sqm
Balcony Area = 29.70 sqm
Total = 174.38 sqm

1506, 1706, 1906 2B/Type F

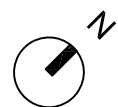
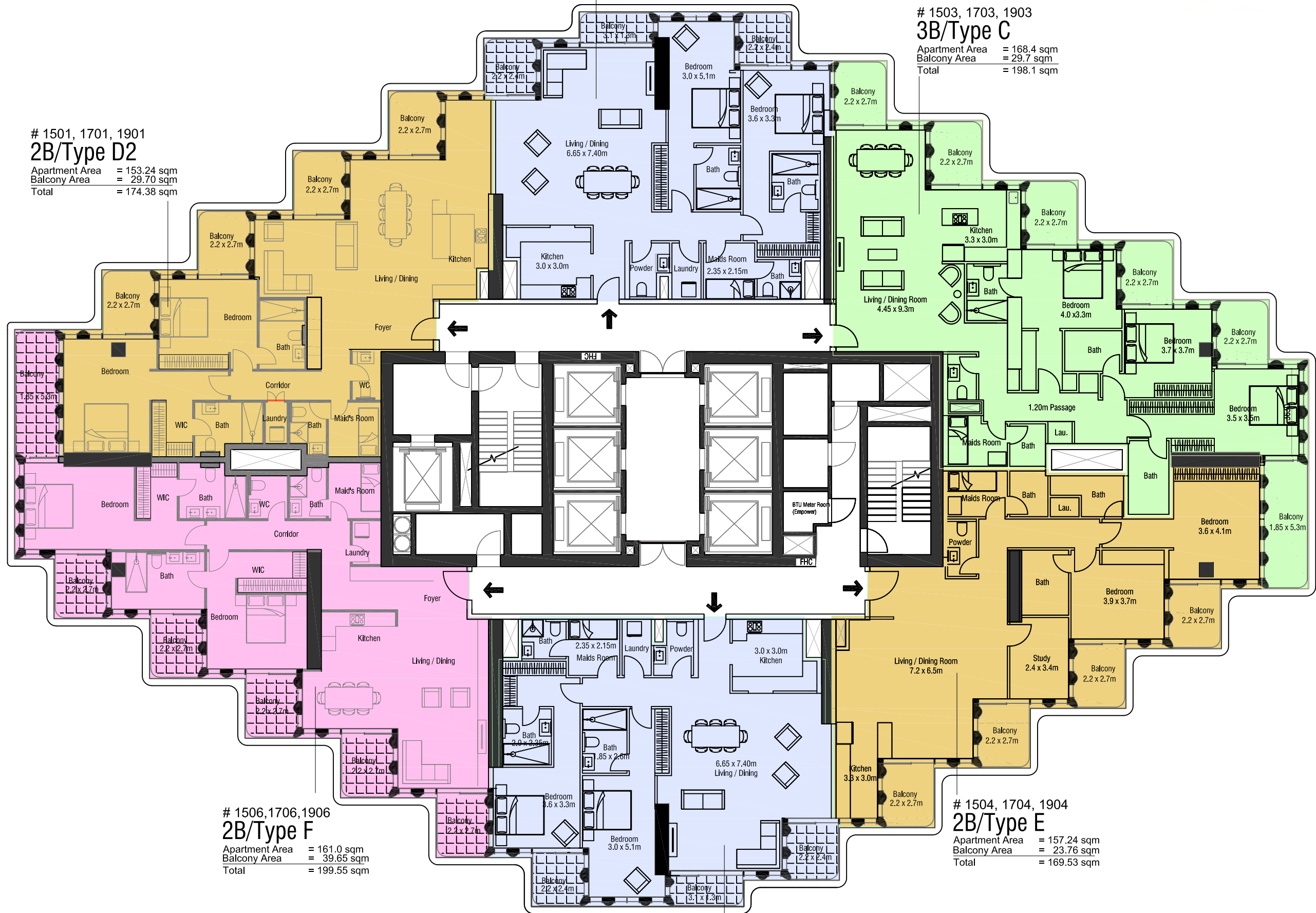
Apartment Area = 161.0 sqm
Balcony Area = 39.65 sqm
Total = 199.55 sqm

1504, 1704, 1904 2B/Type E

Apartment Area = 157.24 sqm
Balcony Area = 23.76 sqm
Total = 169.53 sqm

1505, 1705, 1905 2B/Type B4

Apartment Area = 144.79 sqm
Balcony Area = 15.91 sqm
Total = 160.7 sqm



All room dimensions are in metric and measured to structural elements and exclude wall finishes and construction tolerances. Calculation of suite is measured as the area bounded by the centerline of demising or party walls separating one unit from another unit, the exterior surface of all exterior walls and the exterior surface of the corridor wall on enclosing and abutting the unit. Calculation of terrace area is measured as the area bounded by the centerlines of demising or party walls separating one unit from another unit, the outermost face of the site abutting the balcony. All materials, dimensions and drawings features and amenities are approximate at the time of printing, information is subject to change without notice. Actual suite areas may vary from the stated area. Drawings are not to scale E&EO. The developer reserves the right to make revisions.

Level 20,24,26,28, 30,32, 34

O N E · B T O W E R

2002, 2402, 2602, 2802, 3002, 3202, 3402

3B/Type A

Apartment Area = 205.97 sqm
Balcony Area = 20.53 sqm
Total = 226.5 sqm

2001, 2401, 2601, 2801, 3001, 3201, 3401

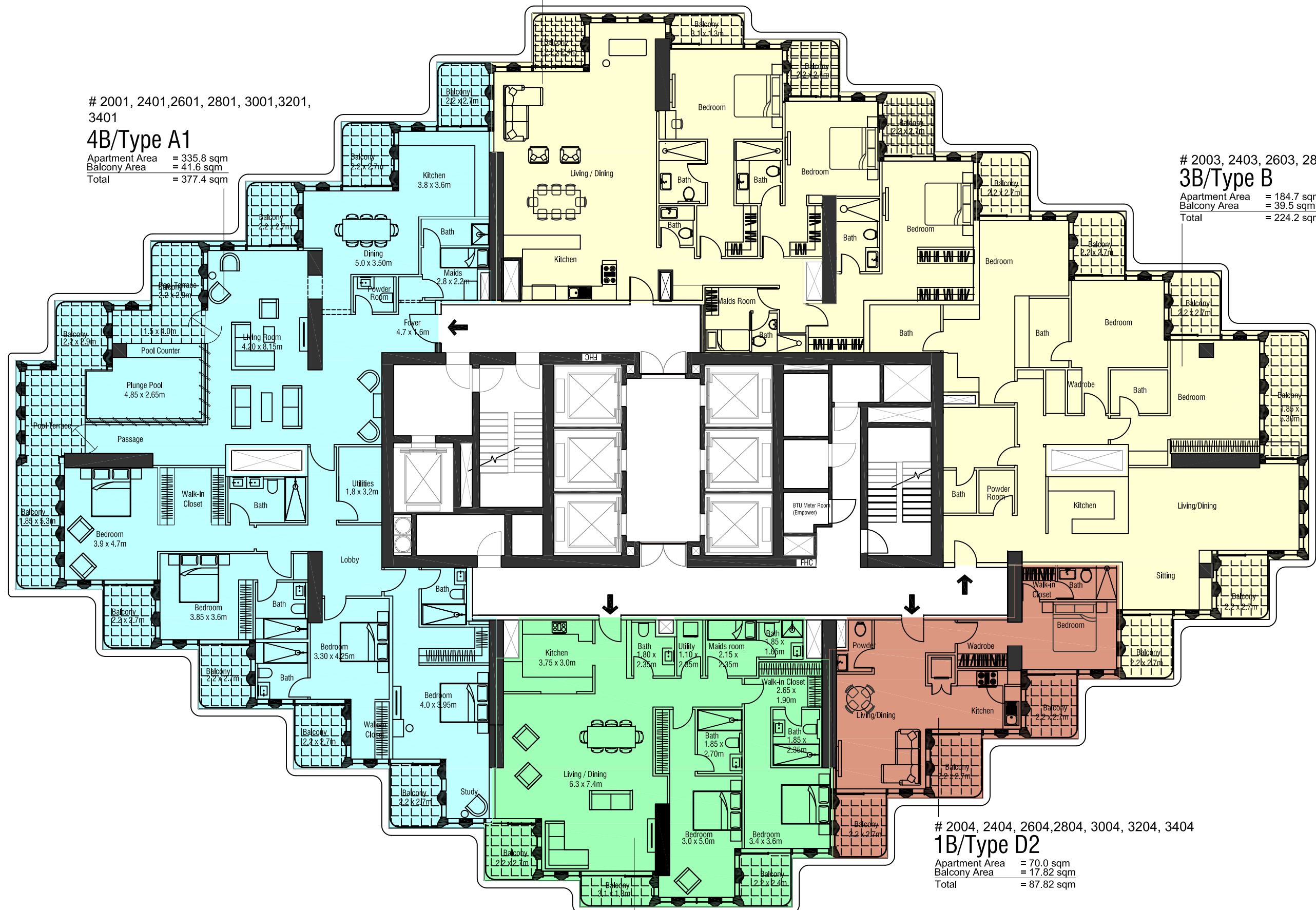
4B/Type A1

Apartment Area = 335.8 sqm
Balcony Area = 41.6 sqm
Total = 377.4 sqm

2003, 2403, 2603, 2803, 3003, 3203, 3403

3B/Type B

Apartment Area = 184.7 sqm
Balcony Area = 39.5 sqm
Total = 224.2 sqm



2004, 2404, 2604, 2804, 3004, 3204, 3404

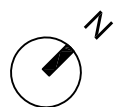
1B/Type D2

Apartment Area = 70.0 sqm
Balcony Area = 17.82 sqm
Total = 87.82 sqm

2005, 2405, 2605, 2805, 3005, 3205, 3405

2B/Type B2

Apartment Area = 145.23 sqm
Balcony Area = 15.17 sqm
Total = 160.4 sqm



All room dimensions are in metric and measured to structural elements and exclude wall finishes and construction tolerances. Calculation of suite is measured as the area bounded by the centerline of demising or party walls separating one unit from another unit, the exterior surface of all exterior walls and the exterior surface of the corridor wall on enclosing and abutting the unit. Calculation of terrace area is measured as the area bounded by the centerlines of demising or party walls separating one unit from another unit, the outermost face of the enclosing guard and the external face of the site abutting the balcony. All materials, dimensions and drawings features and amenities are approximate at the time of printing, information is subject to change without notice. Actual suite areas may vary from the stated area. Drawings are not to scale E&EO. The developer reserves the right to make revisions.



Level 21,25,27,29,31,33,35

2101, 2501, 2701, 2901, 3101, 3301, 3501

4B/Type A2

Apartment Area = 314.64 sqm
Balcony Area = 63.26 sqm
Total = 377.9 sqm

2102, 2502, 2702, 2902, 3102, 3302, 3502

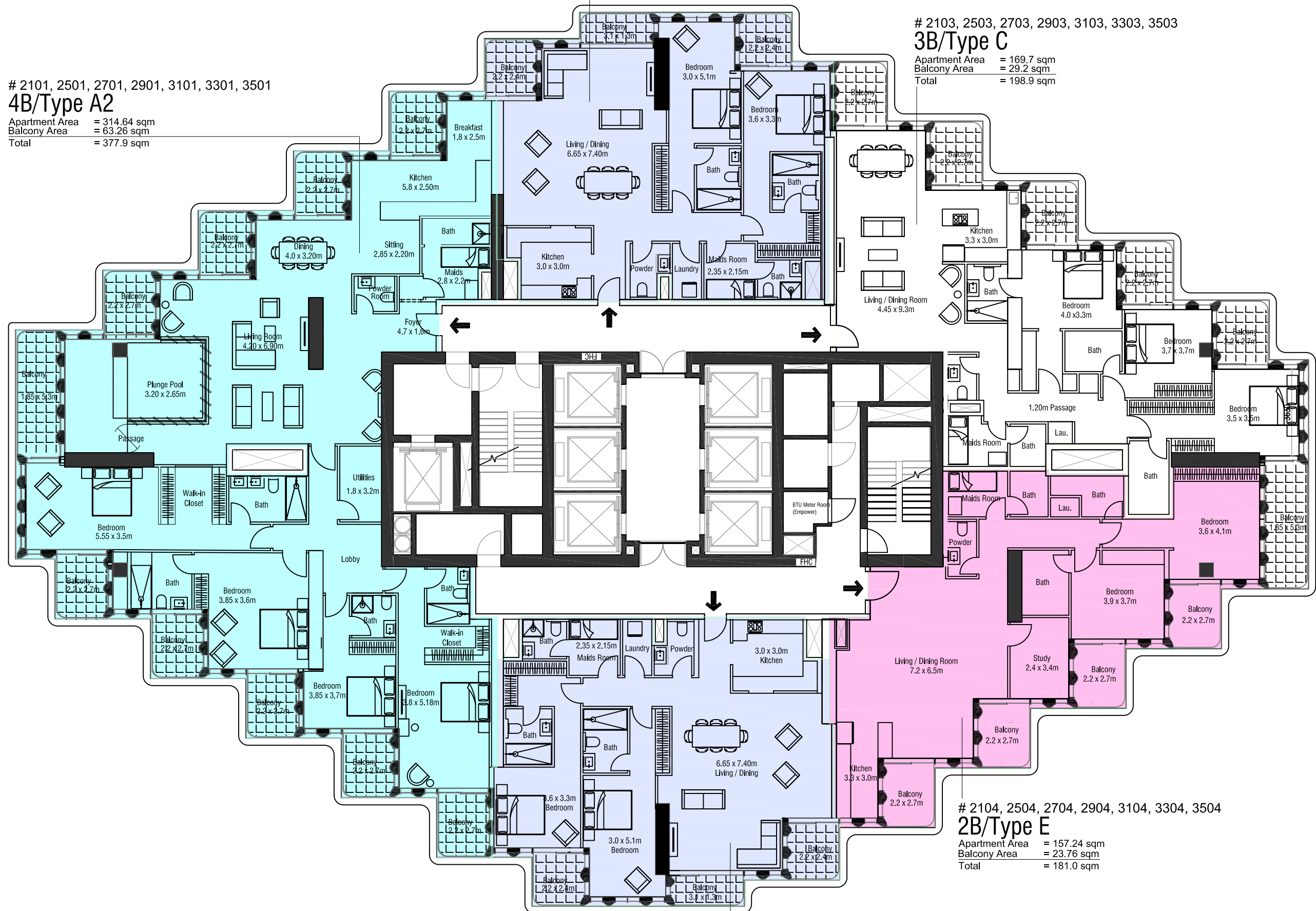
2B/Type B3

Apartment Area = 146.9 sqm
Balcony Area = 14.6 sqm
Total = 161.5 sqm

2103, 2503, 2703, 2903, 3103, 3303, 3503

3B/Type C

Apartment Area = 169.7 sqm
Balcony Area = 29.2 sqm
Total = 198.9 sqm



2104, 2504, 2704, 2904, 3104, 3304, 3504

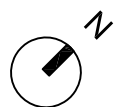
2B/Type E

Apartment Area = 157.24 sqm
Balcony Area = 23.76 sqm
Total = 181.0 sqm

2105, 2505, 2705, 2905, 3105, 3305, 3505

2B/Type B4

Apartment Area = 144.79 sqm
Balcony Area = 15.91 sqm
Total = 160.7 sqm



All room dimensions are in metric and measured to structural elements and exclude wall finishes and construction tolerances. Calculation of suite is measured as the area bounded by the centerline of demising or party walls separating one unit from another unit, the exterior surface of all exterior walls and the exterior surface of the corridor wall on enclosing and abutting the unit. Calculation of terrace area is measured as the area bounded by the centerlines of demising or party walls separating one unit from another unit, the outermost face of the enclosing guard and the external face of the site abutting the balcony. All materials, dimensions and drawings features and amenities are approximate at the time of printing, information is subject to change without notice. Actual suite areas may vary from the stated area. Drawings are not to scale E&EO. The developer reserves the right to make revisions.

2302
2B/Type B3
Apartment Area = 146.9 sqm
Balcony Area = 14.6 sqm
Total = 161.5 sqm

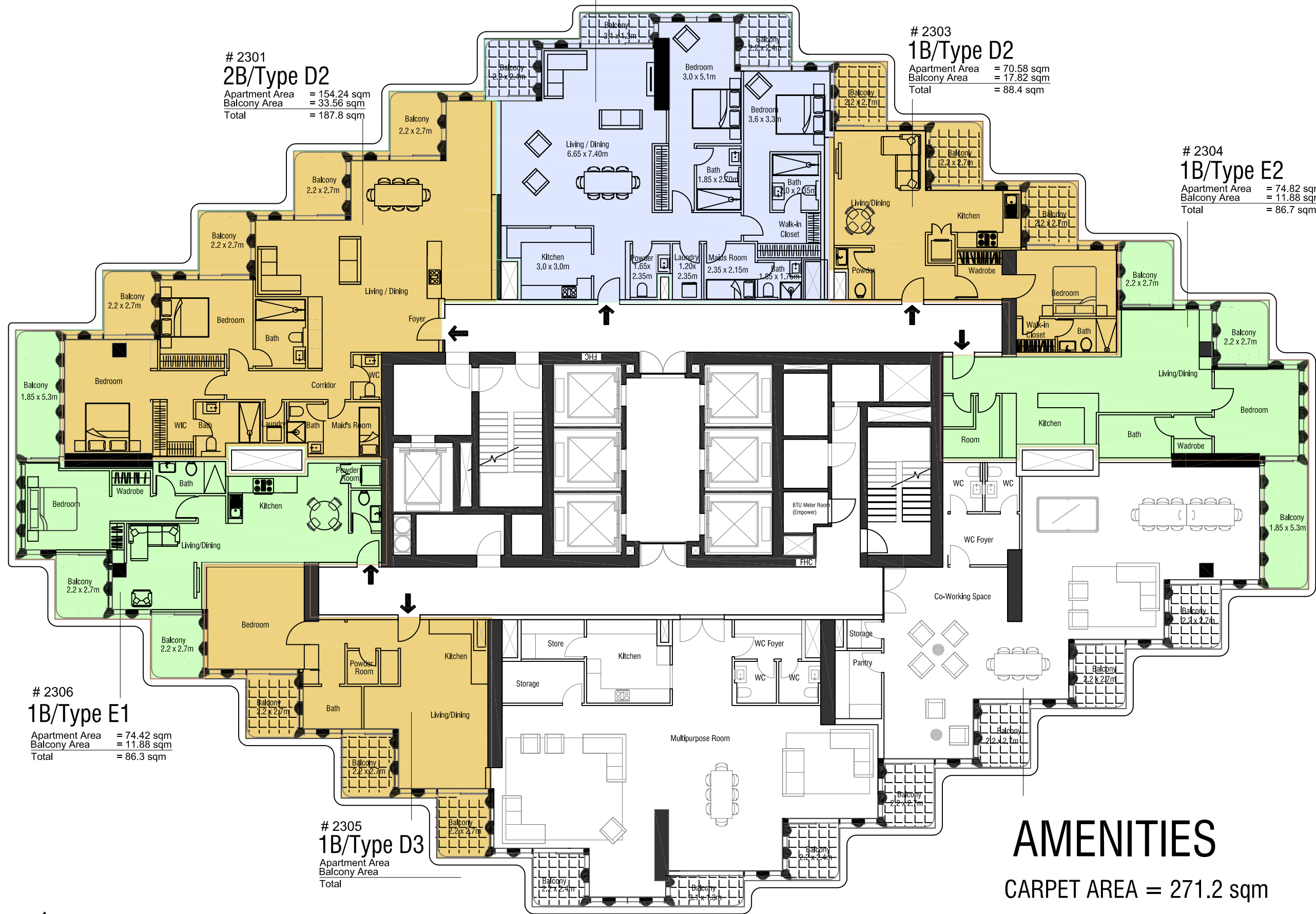
2301
2B/Type D2
Apartment Area = 154.24 sqm
Balcony Area = 33.56 sqm
Total = 187.8 sqm

2303
1B/Type D2
Apartment Area = 70.58 sqm
Balcony Area = 17.82 sqm
Total = 88.4 sqm

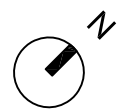
2304
1B/Type E2
Apartment Area = 74.82 sqm
Balcony Area = 11.88 sqm
Total = 86.7 sqm

2306
1B/Type E1
Apartment Area = 74.42 sqm
Balcony Area = 11.88 sqm
Total = 86.3 sqm

2305
1B/Type D3
Apartment Area
Balcony Area
Total



AMENITIES
CARPET AREA = 271.2 sqm



All room dimensions are in metric and measured to structural elements and exclude wall finishes and construction tolerances. Calculation of suite is measured as the area bounded by the centerline of demising or party walls separating one unit from another unit, the exterior surface of all exterior walls and the exterior surface of the corridor wall on enclosing and abutting the unit. Calculation of terrace area is measured as the area bounded by the centerlines of demising or party walls separating one unit from another unit, the outermost face of the enclosing guard and the external face of the site abutting the balcony. All materials, dimensions and drawings features and amenities are approximate at the time of printing, information is subject to change without notice. Actual suite areas may vary from the stated area. Drawings are not to scale E&EO. The developer reserves the right to make revisions.

3602, 3802, 4002
3B-Duplex /3 Dup
(Upper)

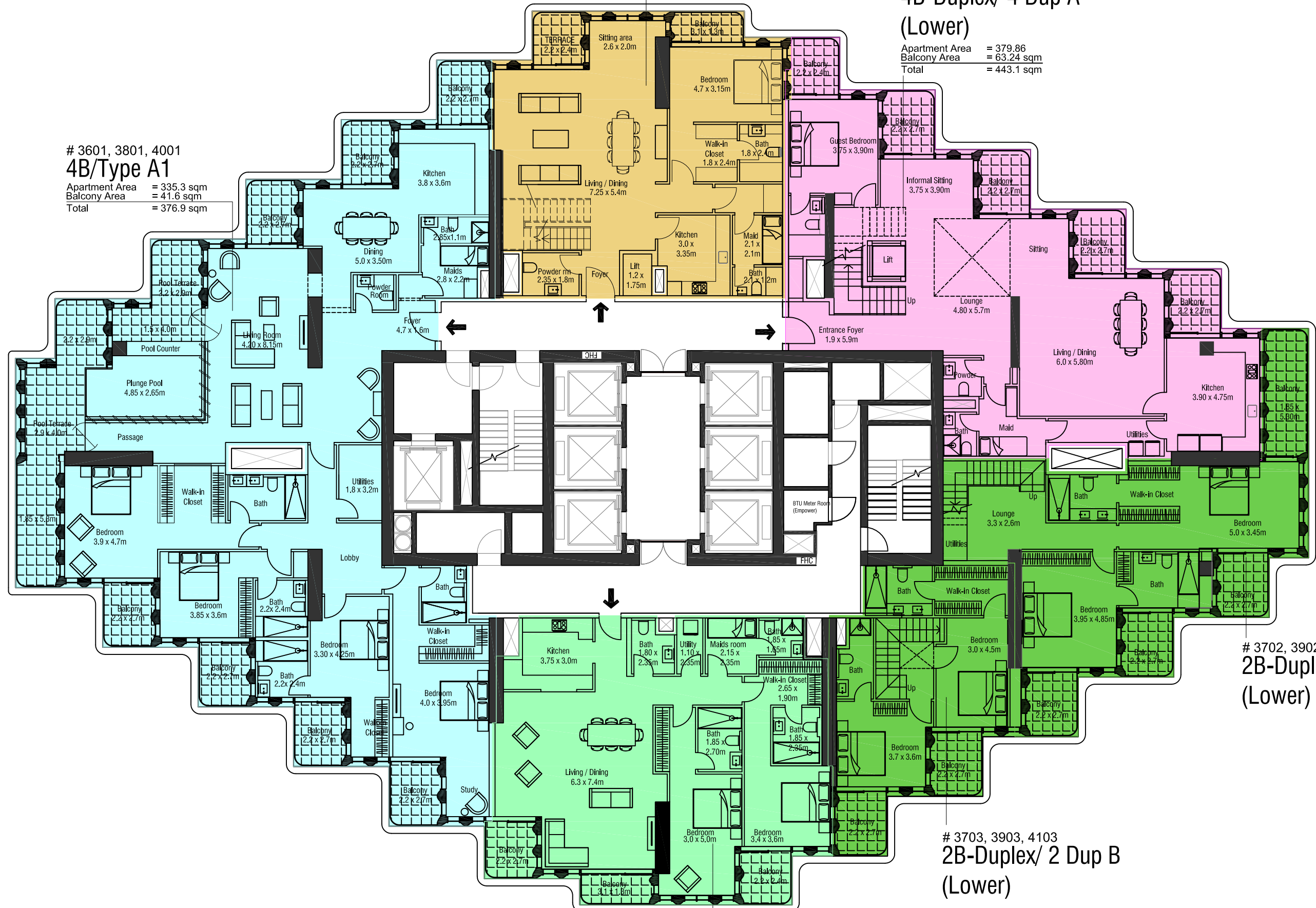
Apartment Area = 246.6 sqm
Balcony Area = 18.66 sqm
Total = 265.26 sqm

3603, 3803, 4003
4B-Duplex/ 4 Dup A
(Lower)

Apartment Area = 379.86
Balcony Area = 63.24 sqm
Total = 443.1 sqm

3601, 3801, 4001
4B/Type A1

Apartment Area = 335.3 sqm
Balcony Area = 41.6 sqm
Total = 376.9 sqm

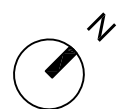


3702, 3902, 4102
2B-Duplex/ 2 Dup A
(Lower)

3703, 3903, 4103
2B-Duplex/ 2 Dup B
(Lower)

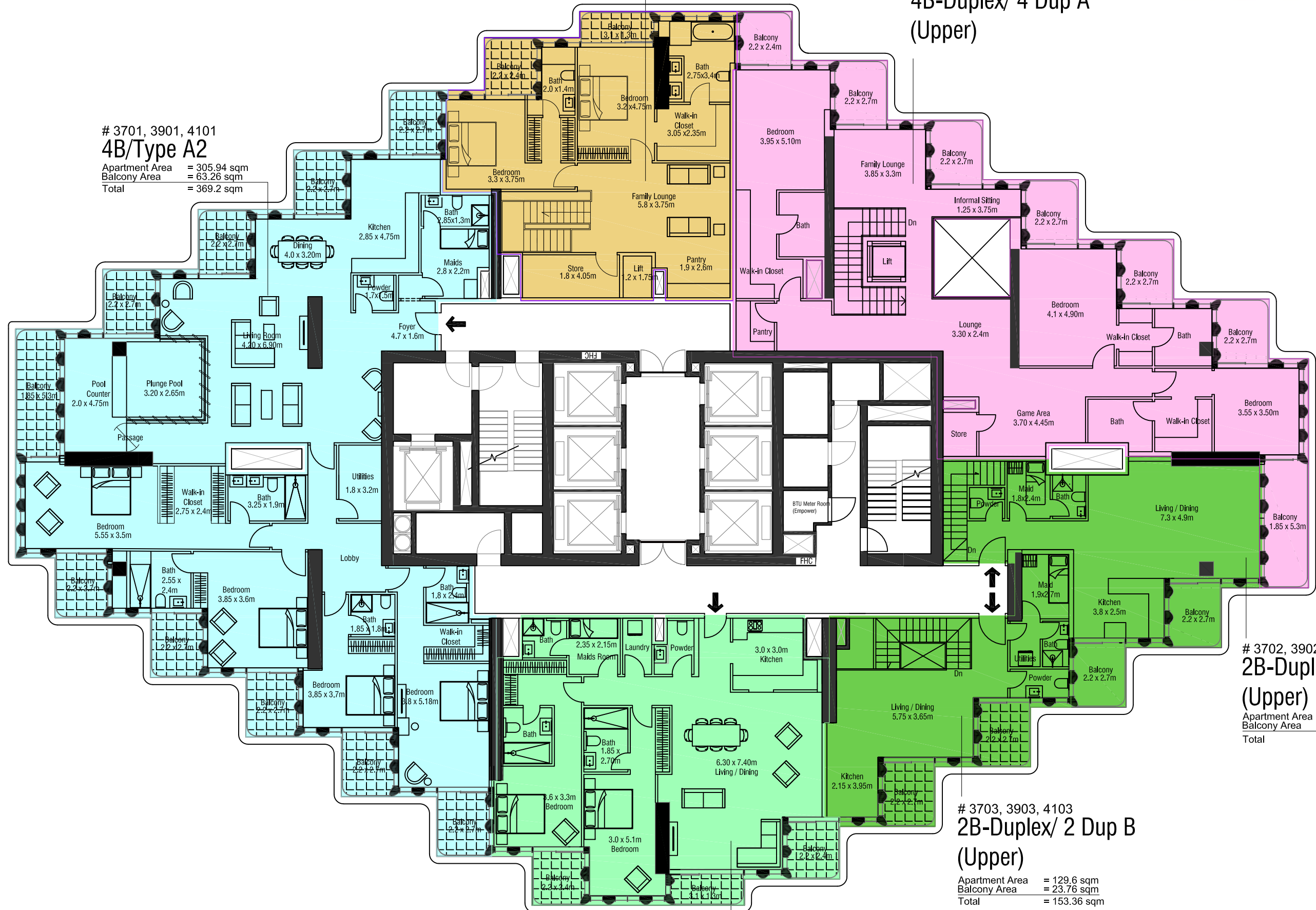
3604, 3804, 4004
2B/Type B2

Apartment Area = 145.69 sqm
Balcony Area = 14.81 sqm
Total = 160.5 sqm



All room dimensions are in metric and measured to structural elements and exclude wall finishes and construction tolerances. Calculation of suite is measured as the area bounded by the centerline of demising or party walls separating one unit from another unit, the exterior surface of all exterior walls and the exterior surface of the corridor wall on enclosing and abutting the unit. Calculation of terrace area is measured as the area bounded by the centerlines of demising or party walls separating one unit from another unit, the outermost face of the site abutting the balcony. All materials, dimensions and drawings features and amenities are approximate at the time of printing, information is subject to change without notice. Actual suite areas may vary from the stated area. Drawings are not to scale E&EO. The developer reserves the right to make revisions.

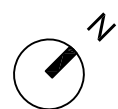
3701, 3901, 4101
4B/Type A2
Apartment Area = 305.94 sqm
Balcony Area = 63.26 sqm
Total = 369.2 sqm



3702, 3902, 4102
2B-Duplex/ 2 Dup A
(Upper)
Apartment Area = 181.4 sqm
Balcony Area = 39.5 sqm
Total = 220.9 sqm

3703, 3903, 4103
2B-Duplex/ 2 Dup B
(Upper)
Apartment Area = 129.6 sqm
Balcony Area = 23.76 sqm
Total = 153.36 sqm

3704, 3904, 4104
2B/Type B4
Apartment Area = 144.39 sqm
Balcony Area = 14.81 sqm
Total = 159.2 sqm



All room dimensions are in metric and measured to structural elements and exclude wall finishes and construction tolerances. Calculation of suite is measured as the area bounded by the centerline of demising or party walls separating one unit from another unit, the exterior surface of all exterior walls and the exterior surface of the corridor wall on enclosing and abutting the unit. Calculation of terrace area is measured as the area bounded by the centerlines of demising or party walls separating one unit from another unit, the outermost face of the site abutting the balcony. All materials, dimensions and drawings features and amenities are approximate at the time of printing, information is subject to change without notice. Actual suite areas may vary from the stated area. Drawings are not to scale E&EO. The developer reserves the right to make revisions.

Level 42, 44, 46

4202, 4402, 4602 3B-Duplex / 3 Dup (Lower)

Apartment Area = 246.6 sqm
Balcony Area = 18.66 sqm
Total = 265.26 sqm

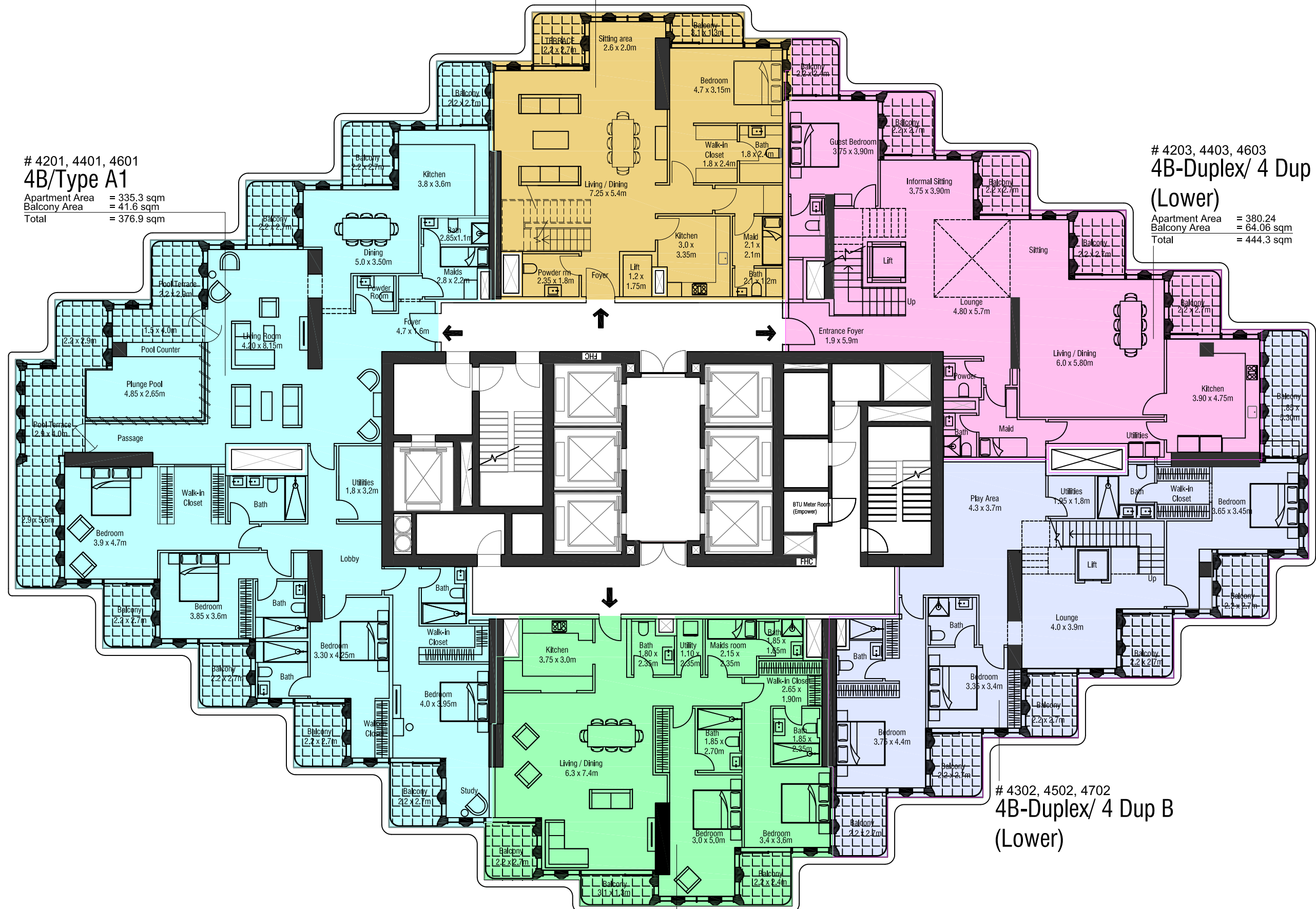
O N E · B T O W E R

4201, 4401, 4601 4B/Type A1

Apartment Area = 335.3 sqm
Balcony Area = 41.6 sqm
Total = 376.9 sqm

4203, 4403, 4603 4B-Duplex/ 4 Dup A (Lower)

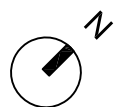
Apartment Area = 380.24 sqm
Balcony Area = 64.06 sqm
Total = 444.3 sqm



4302, 4502, 4702 4B-Duplex/ 4 Dup B (Lower)

4204, 4404, 4604 2B/Type B2

Apartment Area = 145.69 sqm
Balcony Area = 14.81 sqm
Total = 160.5 sqm



All room dimensions are in metric and measured to structural elements and exclude wall finishes and construction tolerances. Calculation of suite is measured as the area bounded by the centerline of demarcating or party walls separating one unit from another unit, the exterior surface of all exterior walls and the exterior surface of the corridor wall on enclosing and abutting the unit. Calculation of terrace area is measured as the area bounded by the centerlines of demarcating or party walls separating one unit from another unit, the outermost face of the site abutting the balcony. All materials, dimensions and drawings features and amenities are approximate at the time of printing, information is subject to change without notice. Actual suite areas may vary from the stated area. Drawings are not to scale E&EO. The developer reserves the right to make revisions.



Level 43, 45, 47

4202, 4402, 4602 3B-Duplex / 3 Dup (Upper)

4301, 4501, 4701 4B/Type A2

Apartment Area = 305.94 sqm
Balcony Area = 63.26 sqm
Total = 369.2 sqm

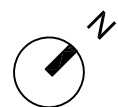
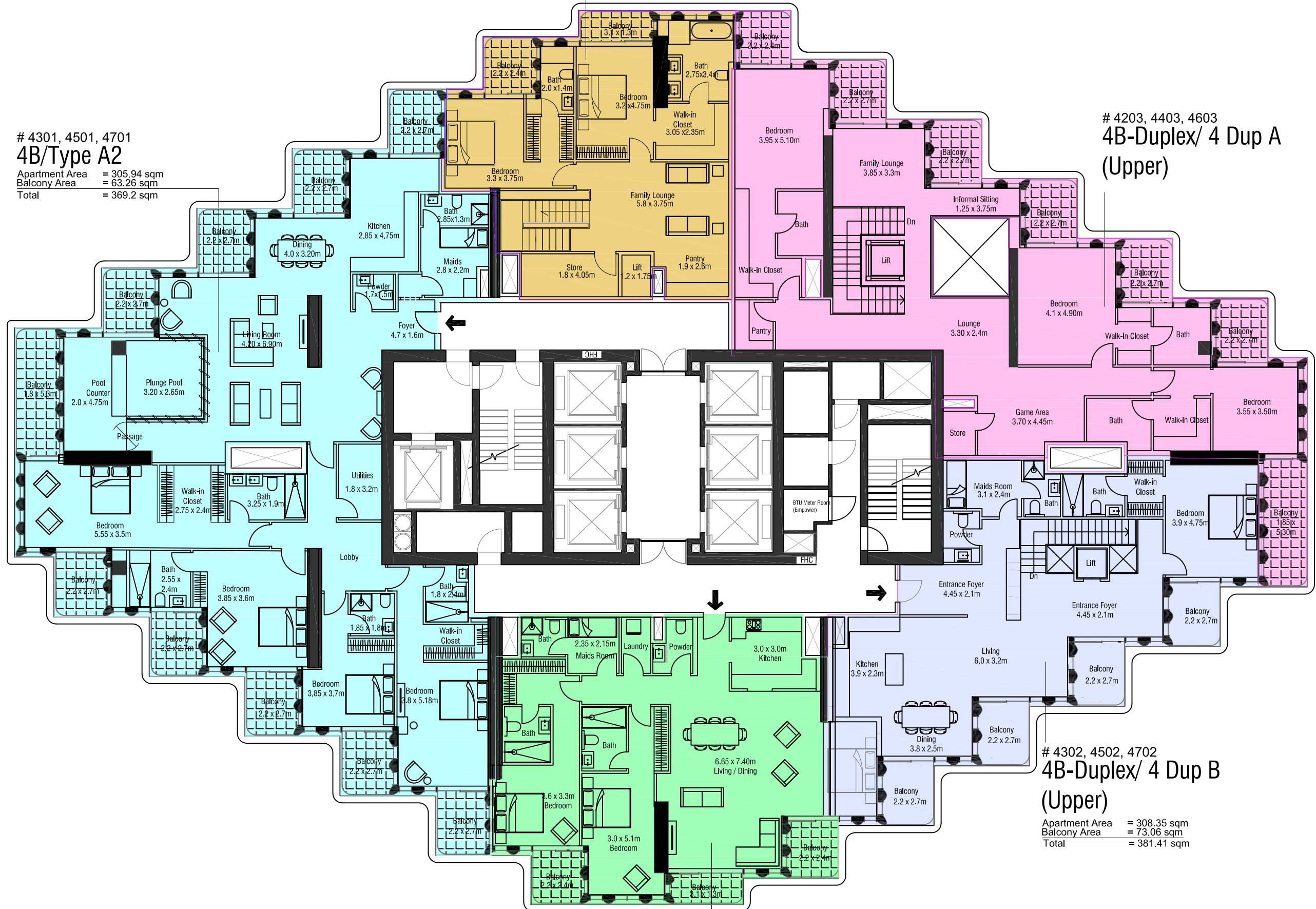
4203, 4403, 4603 4B-Duplex/ 4 Dup A (Upper)

4302, 4502, 4702 4B-Duplex/ 4 Dup B (Upper)

Apartment Area = 308.35 sqm
Balcony Area = 73.06 sqm
Total = 381.41 sqm

4303, 4503, 4703 2B/Type B4

Apartment Area = 144.39 sqm
Balcony Area = 14.81 sqm
Total = 159.2 sqm



All room dimensions are in metric and measured to structural elements and exclude wall finishes and construction tolerances. Calculation of suite is measured as the area bounded by the centerline of demising or party walls separating one unit from another unit, the exterior surface of all exterior walls and the exterior surface of the corridor wall on enclosing and abutting the unit. Calculation of terrace area is measured as the area bounded by the centerlines of demising or party walls separating one unit from another unit, the outermost face of the site abutting the balcony. All materials, dimensions and drawings features and amenities are approximate at the time of printing, information is subject to change without notice. Actual suite areas may vary from the stated area. Drawings are not to scale E&CO. The developer reserves the right to make revisions.




BUY | SELL | RENT | PROPERTY MANAGEMENT SERVICES

GET IN TOUCH WITH US

 **+971 56 818 8610**

 **info@homes4life.ae**

 **Head Office:**
Office 25 | Oasis Center | Sheikh Zayed Road | Dubai | +971 4 338 7300

Branch Office:
Retail 1 | Safi Apartments | Town Square Dubai | Dubai | +971 4 398 1528