

The 100

ROYAL CREATION

A ROYAL TOUCH



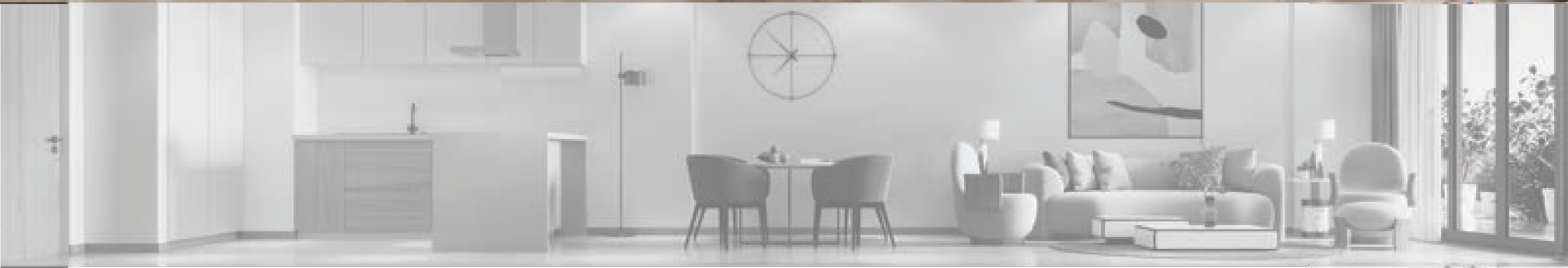
BUILDING SIZE

WIDTH:
125.26m

HEIGHT:
25.3M



The 100 is a luxurious building developed by “**The 100**” and is regarded as one of the most opulent structures in Meydan.



WHY THE 100 MEYDAN?

Royal Size

The 100 offers 35% larger living spaces than standard units.

Royal Views

Residents will enjoy breathtaking views of the Dubai skyline.

Royal location

The 100 provides easy access to Dubai's critical destinations via major roads.



LOCATION & NEIGHBORHOOD



Great Schools:

North London Collegiate School, LSG School, ICE School, Dubai International School, Hartland International School

Easy Commute:

Convenient public transportation, including future Dubai Metro stations.

Shopping Convenience:

Shop at Dubai Mall, Dubai Festival City Mall and Dubai Outlet Mall.

Green Spaces:

Meydan racecourse, Meydan Cycling, and running track, District One Cycling and running track

15 MINUTES

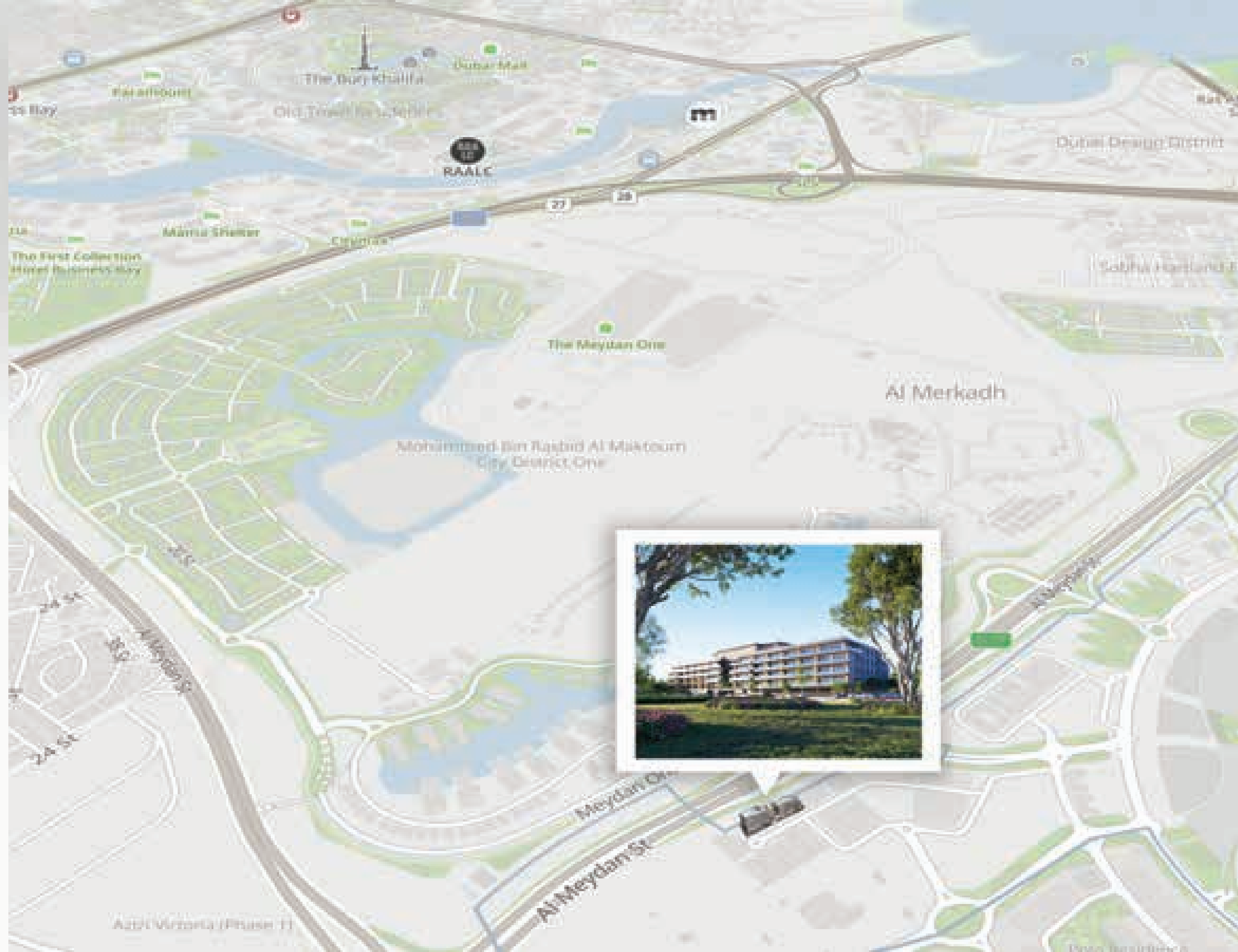
To Downtown Dubai
Business Bay

15 MINUTES

To Dubai International
Financial Centre

15 MINUTES

To Dubai International
Airport



The 100 provides **153,000 sqft** of very generous proportioned living spaces.





The 100 stretches along **2 separate horizontal sections** for quality of living.

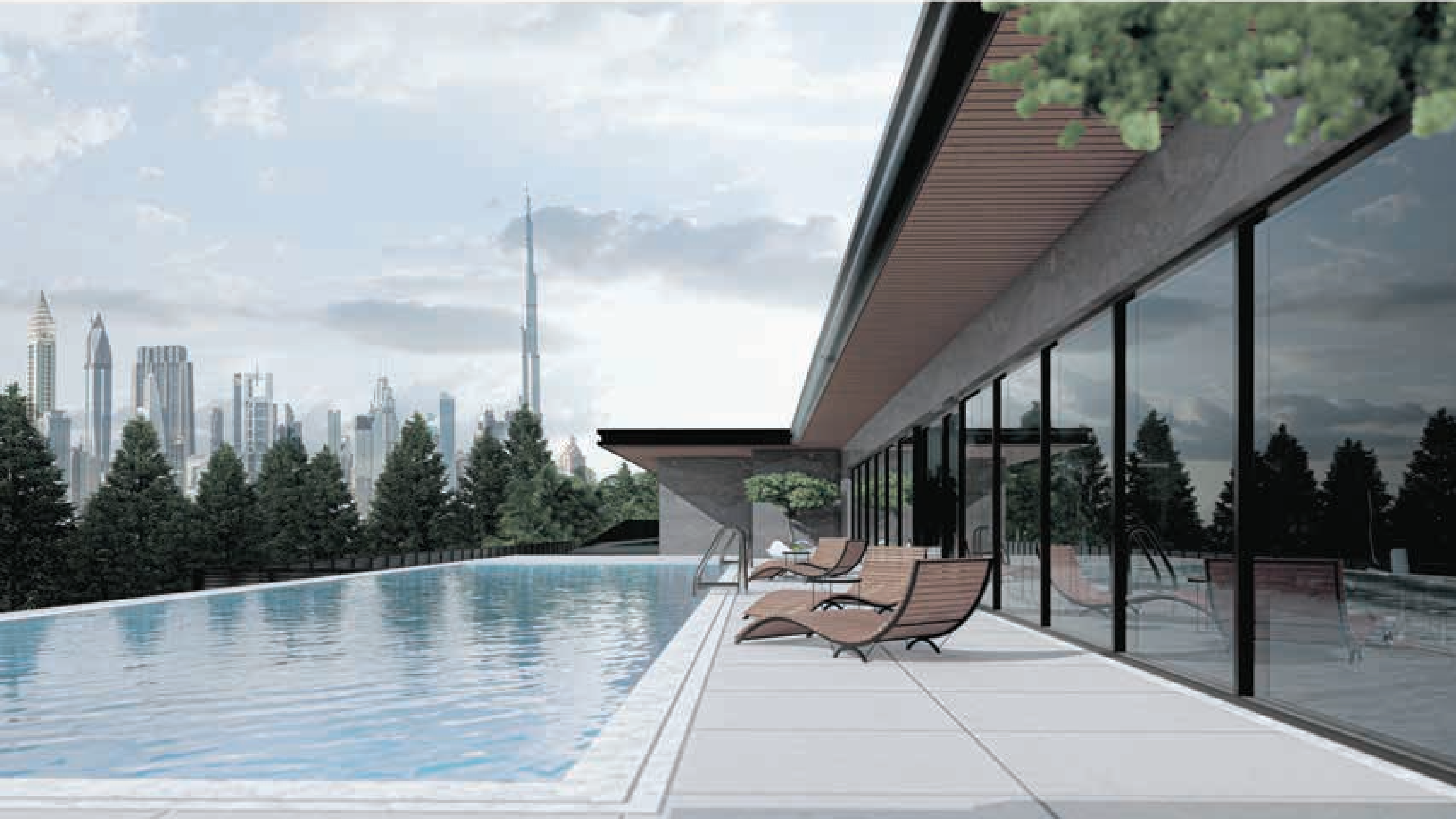
The 100



Whether enjoying the Dubai skyline or the Meydan view, every resident will enjoy a calm oasis in the middle of the city.



AMENITIES





Royal living

The 100 is the only luxury development in the Meydan area, providing a premium lifestyle.







A tranquil yoga space designed in a minimalist style and bathed in warm lighting. The serene ambiance, accentuated by views of nature and the city skyline, fosters deep relaxation.

Inviting relaxation, an artfully
crafted sauna, and steam room will
provide a refreshing experience
after a long day.



INTERIOR SHOTS



The MO



PAINTINGS BY NASSIM NASR

One Bedroom Two bedroom Three bedroom Penthouse

54 Houses - 54 Birds

16 Houses -16 Birds

16 Houses -16 Birds

4 Houses - 4 Birds





Nassim Nasr

Exclusively crafted for "The 100 Meydan," Nassim Nasr has created a masterpiece. He is renowned for his unique style of Expressive Color Minimalism, which is characterized by a fusion of vibrant color palettes, emotional expression, and restrained simplicity.



More than just an entrance, this lobby is a canvas come to life. Cool gray walls rise towards a 4.5-meter ceiling, while unique art pieces evoke emotion.

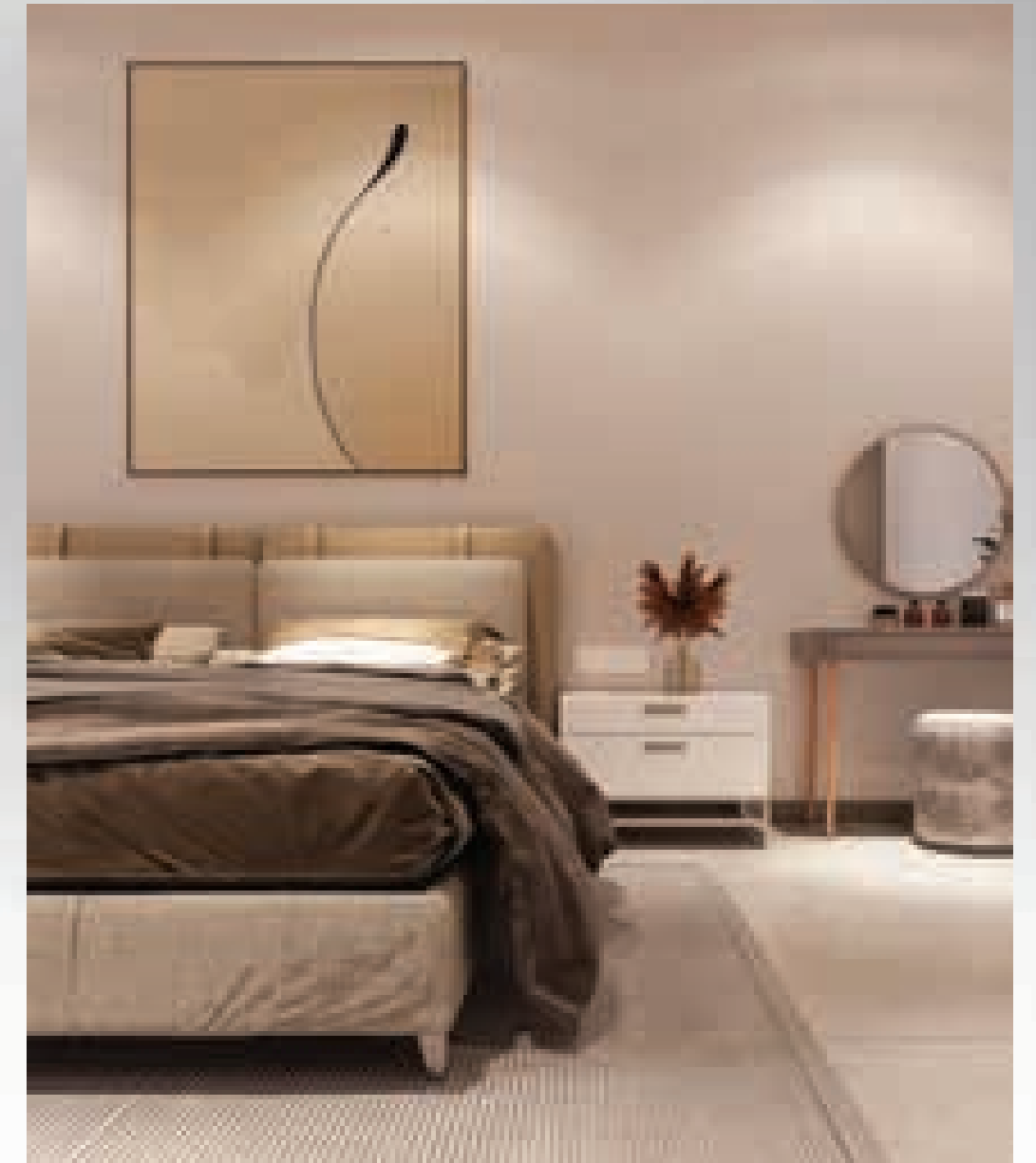
A modern, open-plan living area with a sleek kitchen, central island, stylish pendant lights, and large windows for a cozy and inviting atmosphere.









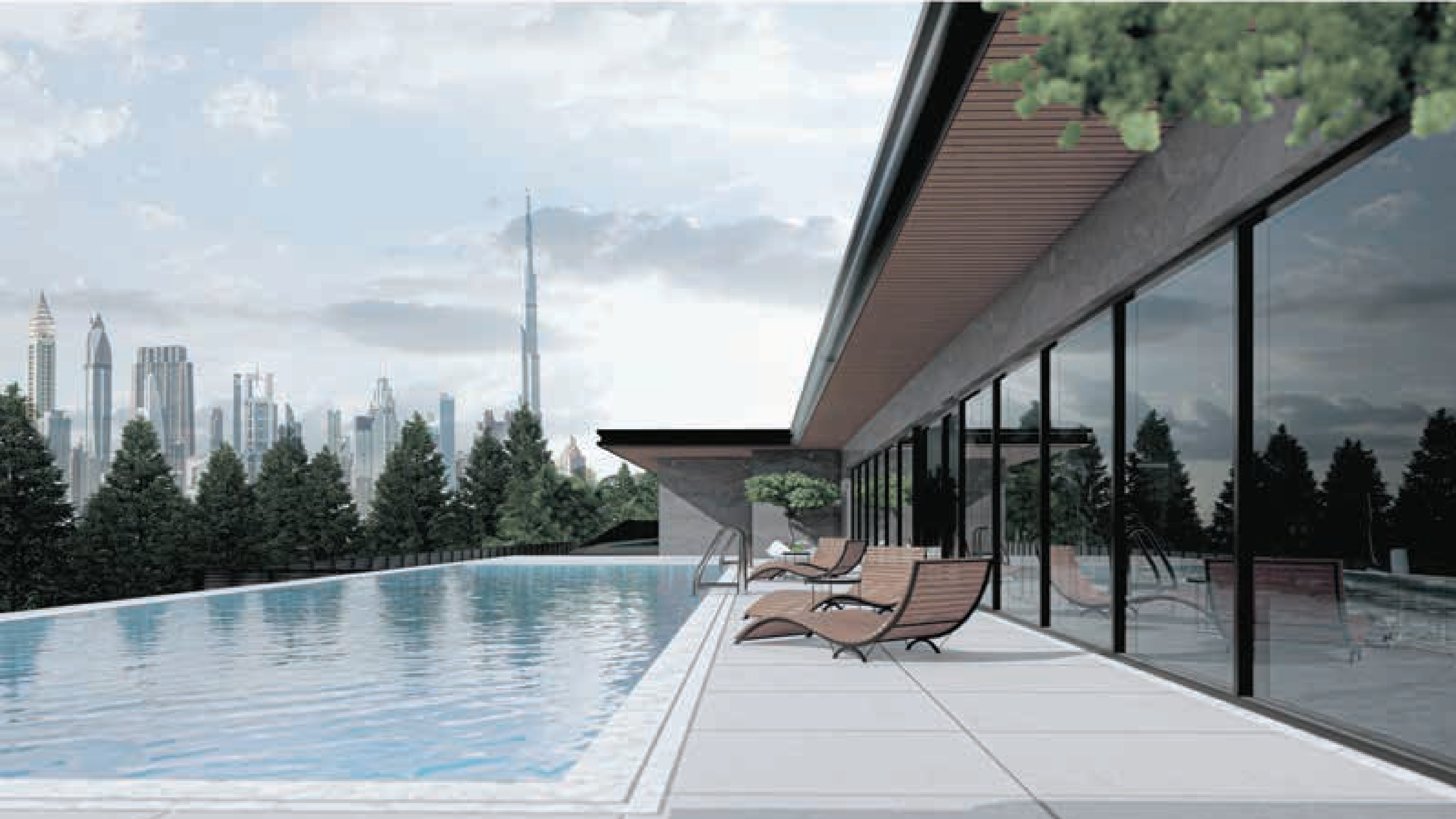


A sleek, modern bedroom with warm lighting, perfect for a restful sleep.



Experience "**The 100**" brand's premium fixtures in our thoughtfully designed bathroom, featuring integrated mirror lighting, sleek black stainless steel faucets, and captivating artistic illumination for your morning ritual.

EXTERIOR SHOTS





The 100

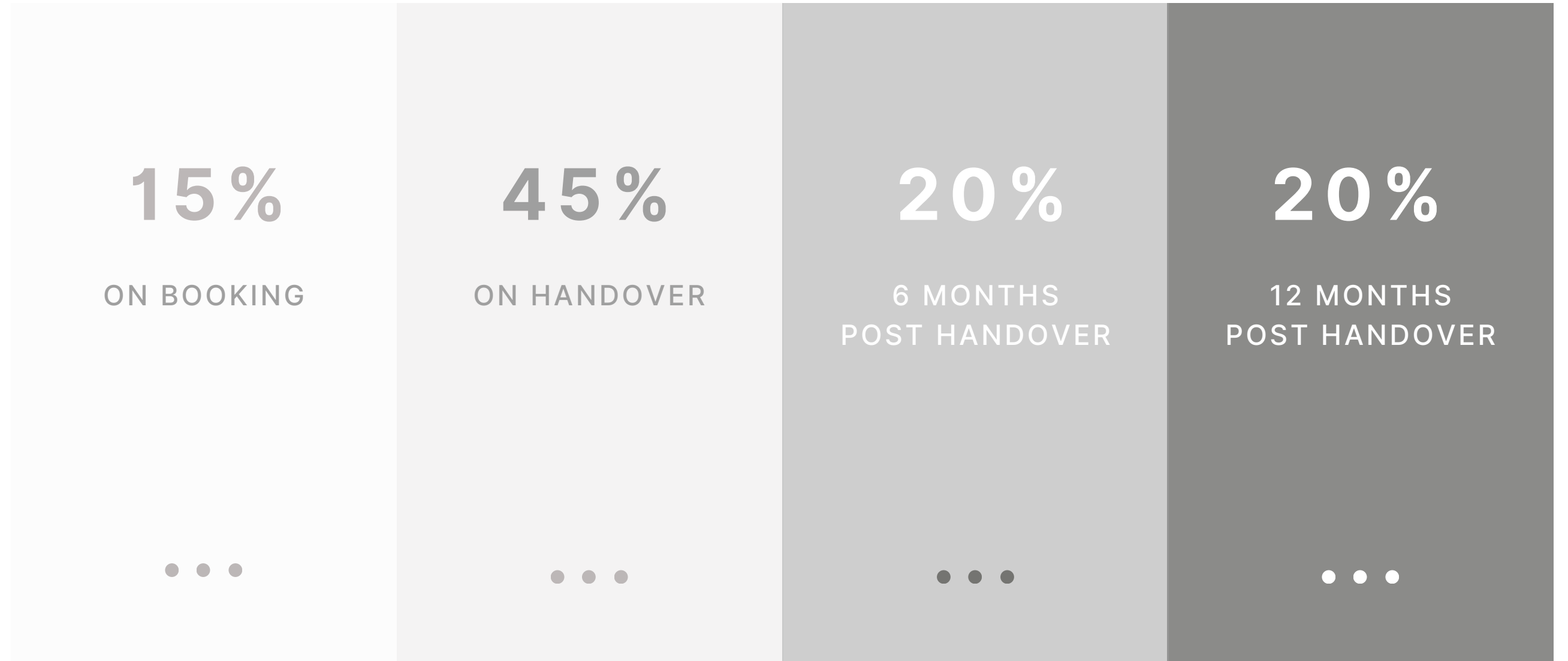




PAYMENT PLAN & STARTING PRICES

PAYMENT PLAN

FULL
DLD
WAIVER



PROJECT
HANDOVER

Q3 - 2024

STARTING
PRICES

AED 1.74M
APARTMENTS

AED 10.5M
PENTHOUSE





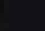
BUY | SELL | RENT | PROPERTY MANAGEMENT SERVICES

GET IN TOUCH WITH US

 **+971 56 818 8610**

 **info@homes4life.ae**

 **Head Office:**
Office 25 | Oasis Center | Sheikh Zayed Road | Dubai | +971 4 338 7300

 **Branch Office:**
Retail 1 | Safi Apartments | Town Square Dubai | Dubai | +971 4 398 1528