



Payment Plan

DESCRIPTION	INSTALLMENT PROGRESS	INSTALMENT %
1st INSTALMENT	ON BOOKING	5%
2nd INSTALMENT	SIGNING OF SPA (WITHIN 45 DAYS)	5%
3rd INSTALMENT	3 MONTHS AFTER BOOKING	10%
4th INSTALMENT	10% CONSTRUCTION	5%
5th INSTALMENT	20% CONSTRUCTION	5%
6th INSTALMENT	30% CONSTRUCTION	5%
7th INSTALMENT	40% CONSTRUCTION	5%
8th INSTALMENT	60% CONSTRUCTION	5%
9th INSTALMENT	80% CONSTRUCTION	5%
10th INSTALMENT	ON HANDOVER	5%
11th INSTALMENT	4 MONTHS AFTER HANDOVER	5%
12th INSTALMENT	8 MONTHS AFTER HANDOVER	5%
13th INSTALMENT	12 MONTHS AFTER HANDOVER	5%
14th INSTALMENT	16 MONTHS AFTER HANDOVER	5%
15th INSTALMENT	20 MONTHS AFTER HANDOVER	5%
16th INSTALMENT	24 MONTHS AFTER HANDOVER	5%
17th INSTALMENT	28 MONTHS AFTER HANDOVER	5%
18th INSTALMENT	32 MONTHS AFTER HANDOVER	5%
19th INSTALMENT	36 MONTHS AFTER HANDOVER	5%
		100%

Hills View
AT WASL GATE

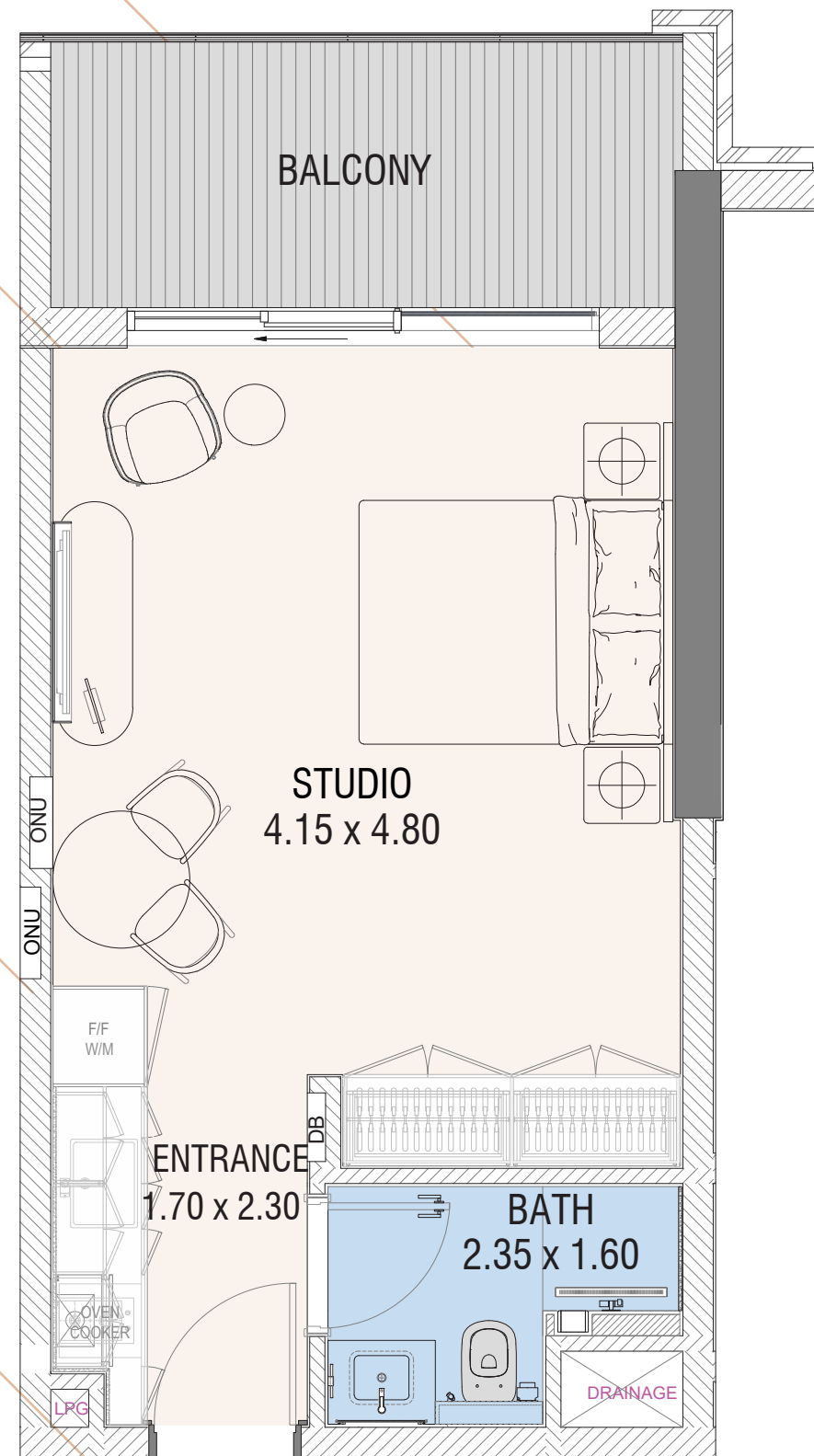
Exclusive Partner



Payment Plan & Floor Plan

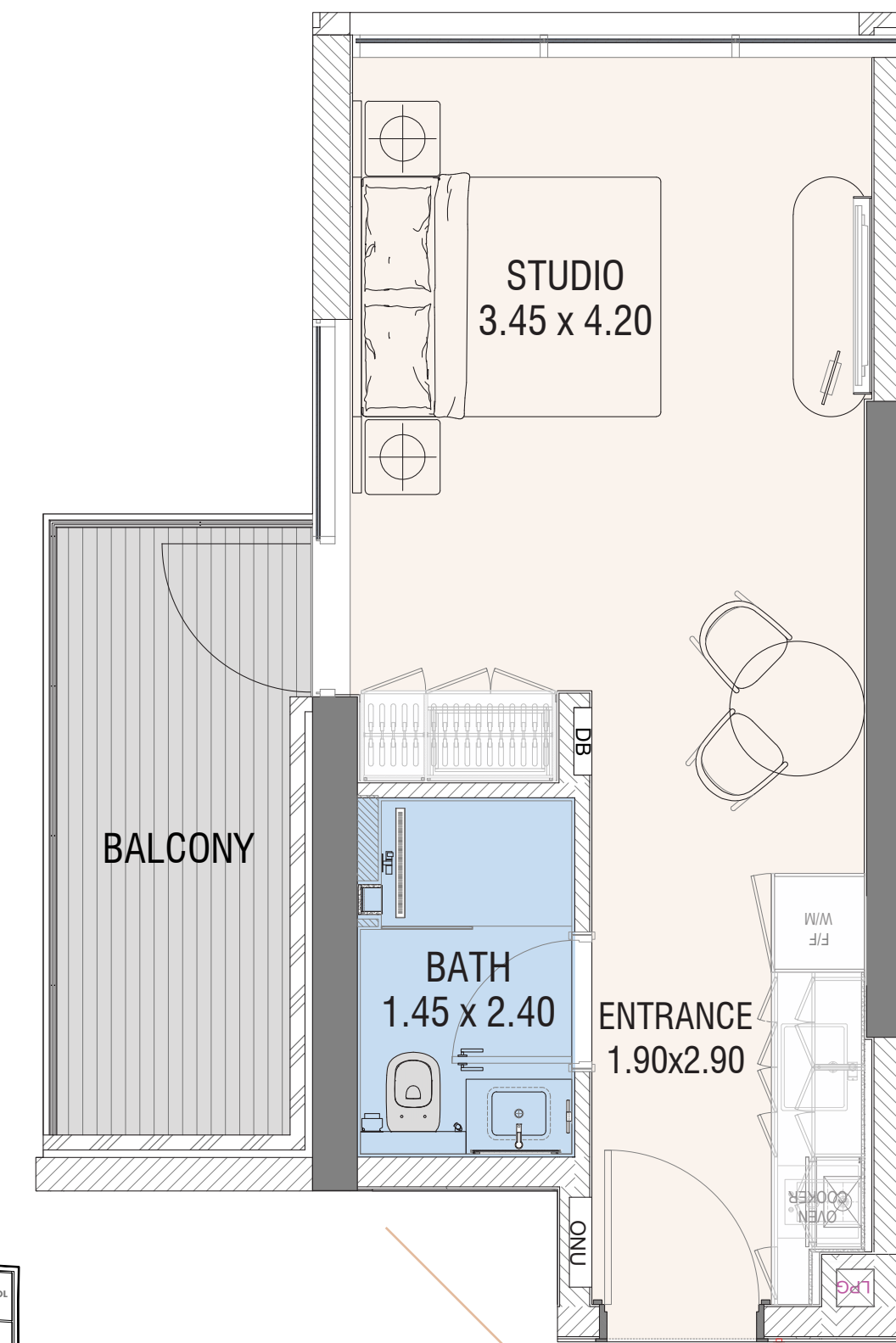


Floor Plan



01 STUDIO
AREA=422.06 SQ.FT

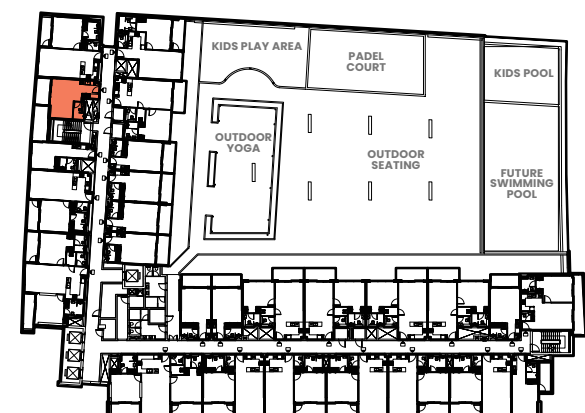
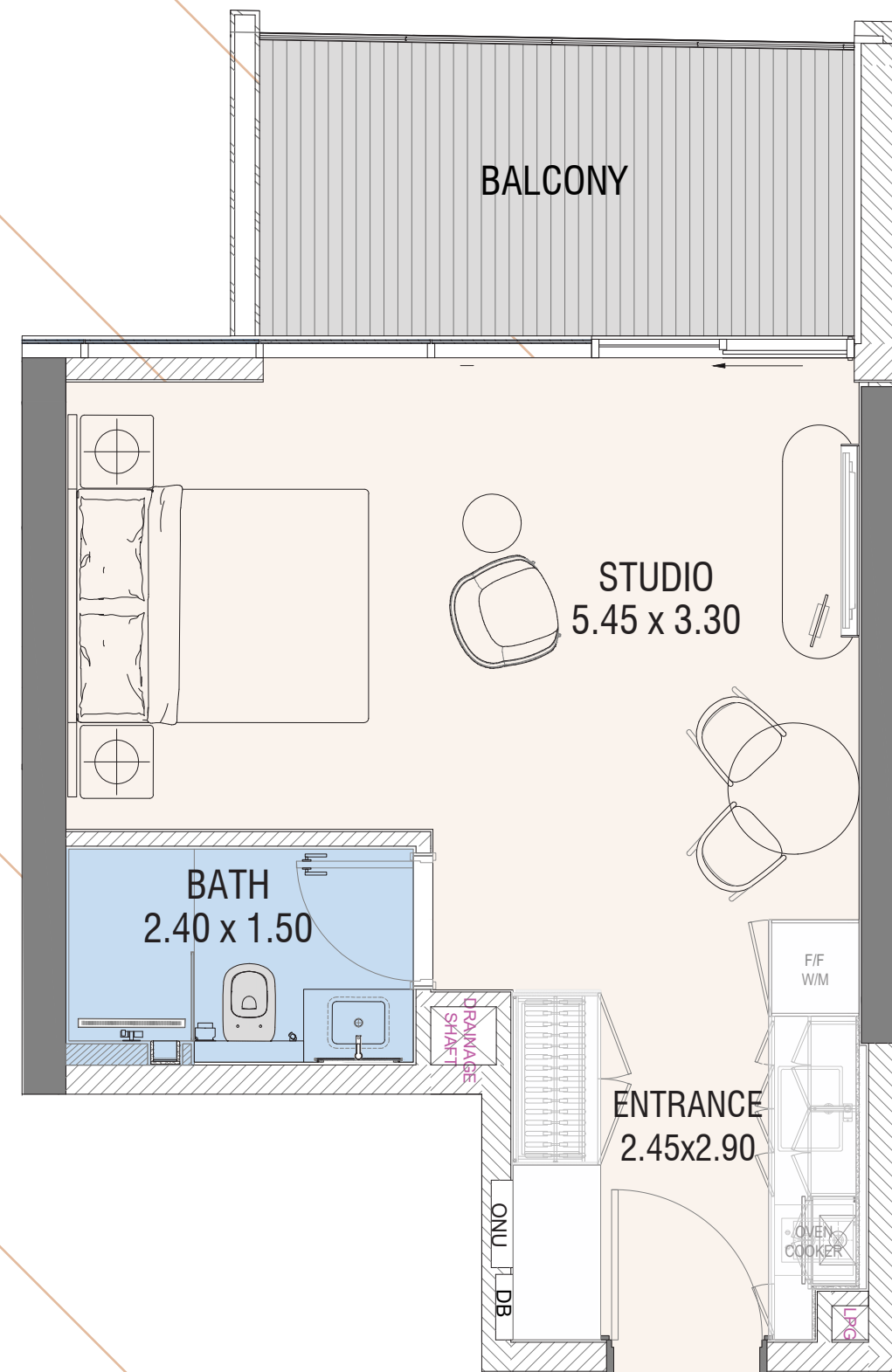
Floor Plan



02 STUDIO
AREA=412.26 SQ.FT

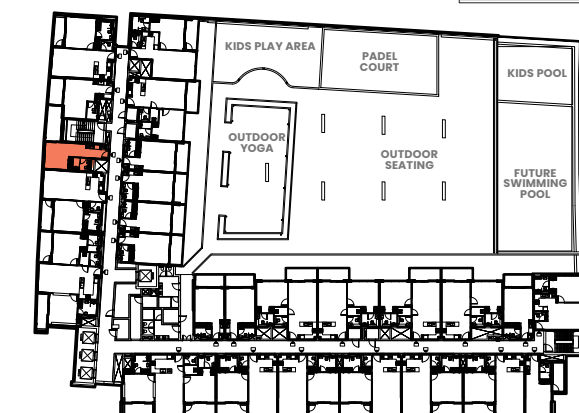
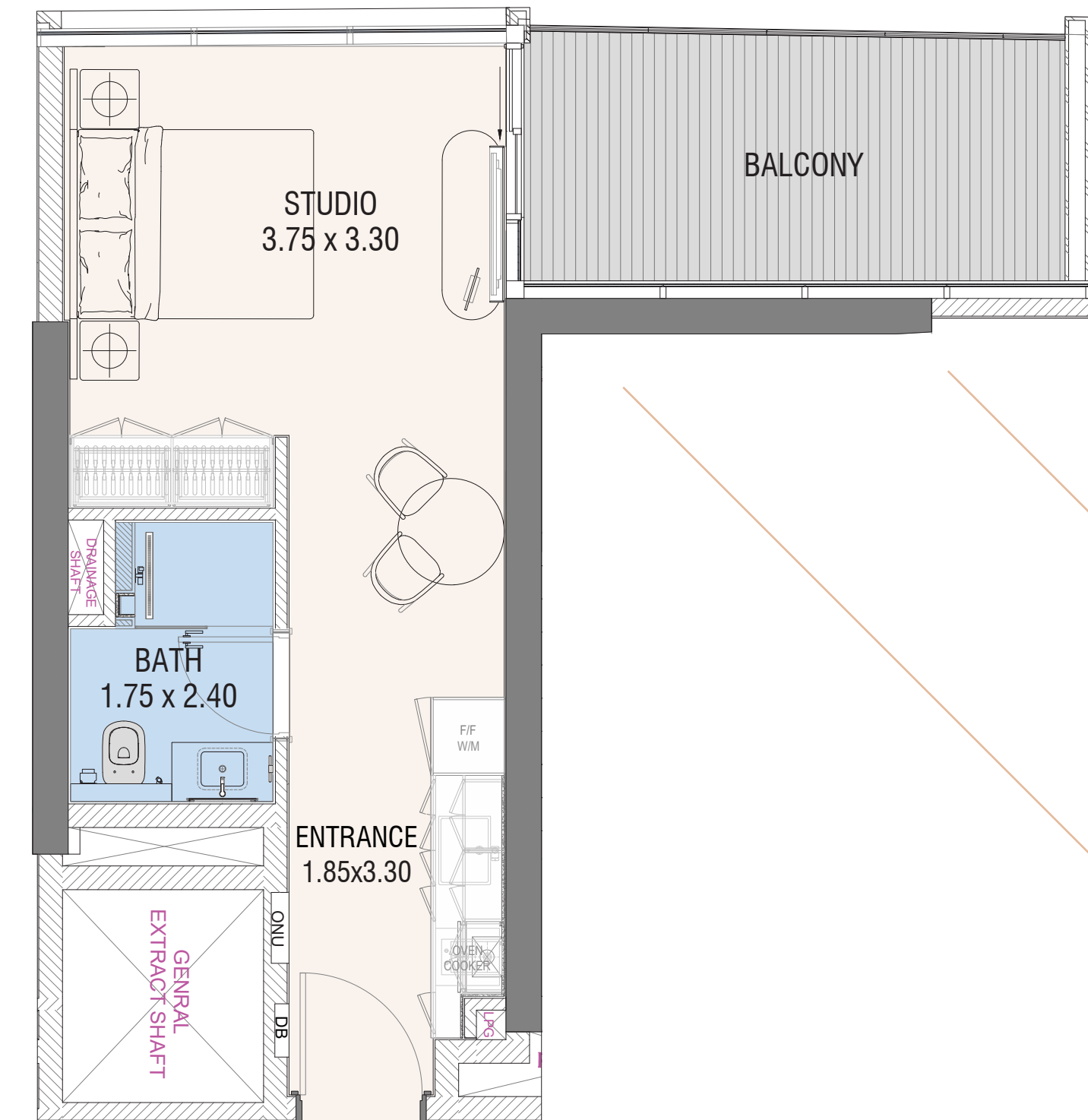


Floor Plan



03STUDIO
AREA=455.85 SQ.FT

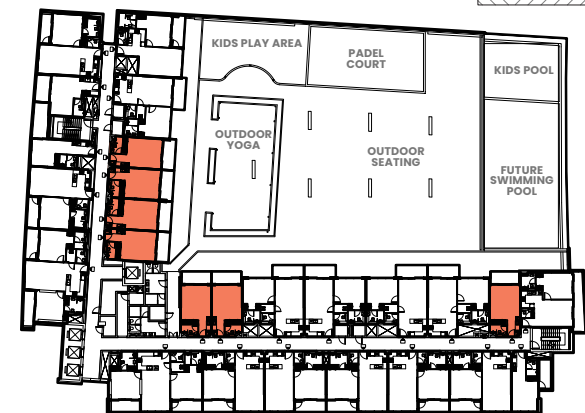
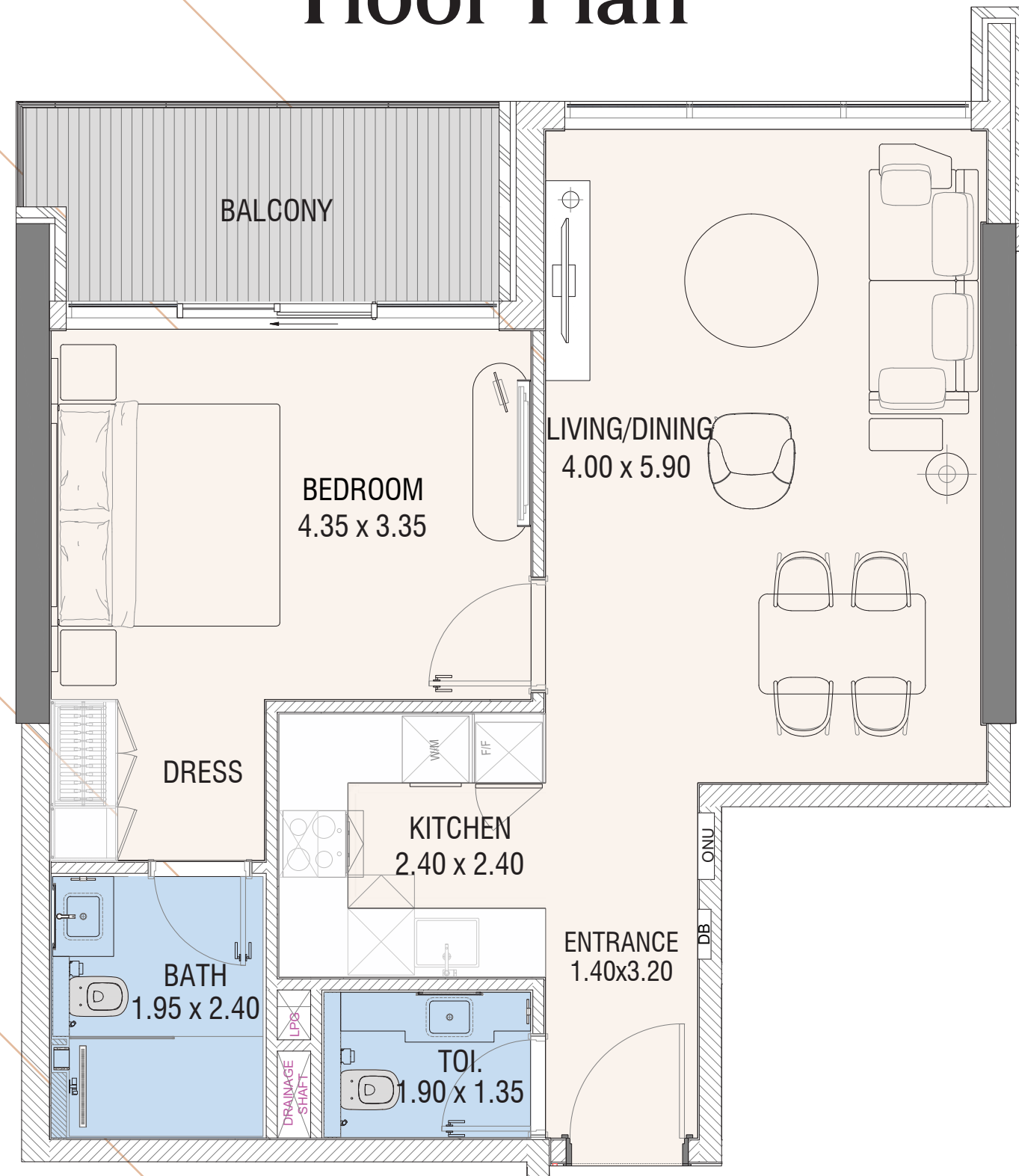
Floor Plan



04STUDIO
AREA=449.40 SQ.FT

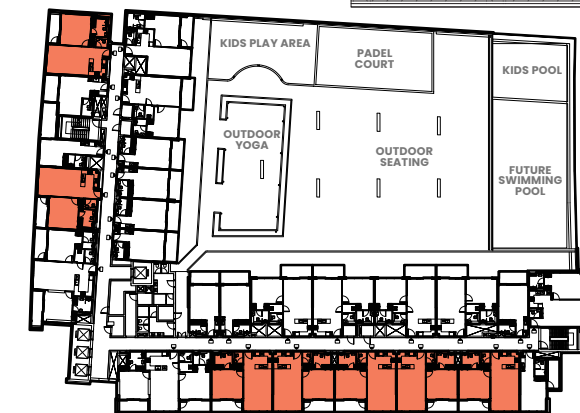
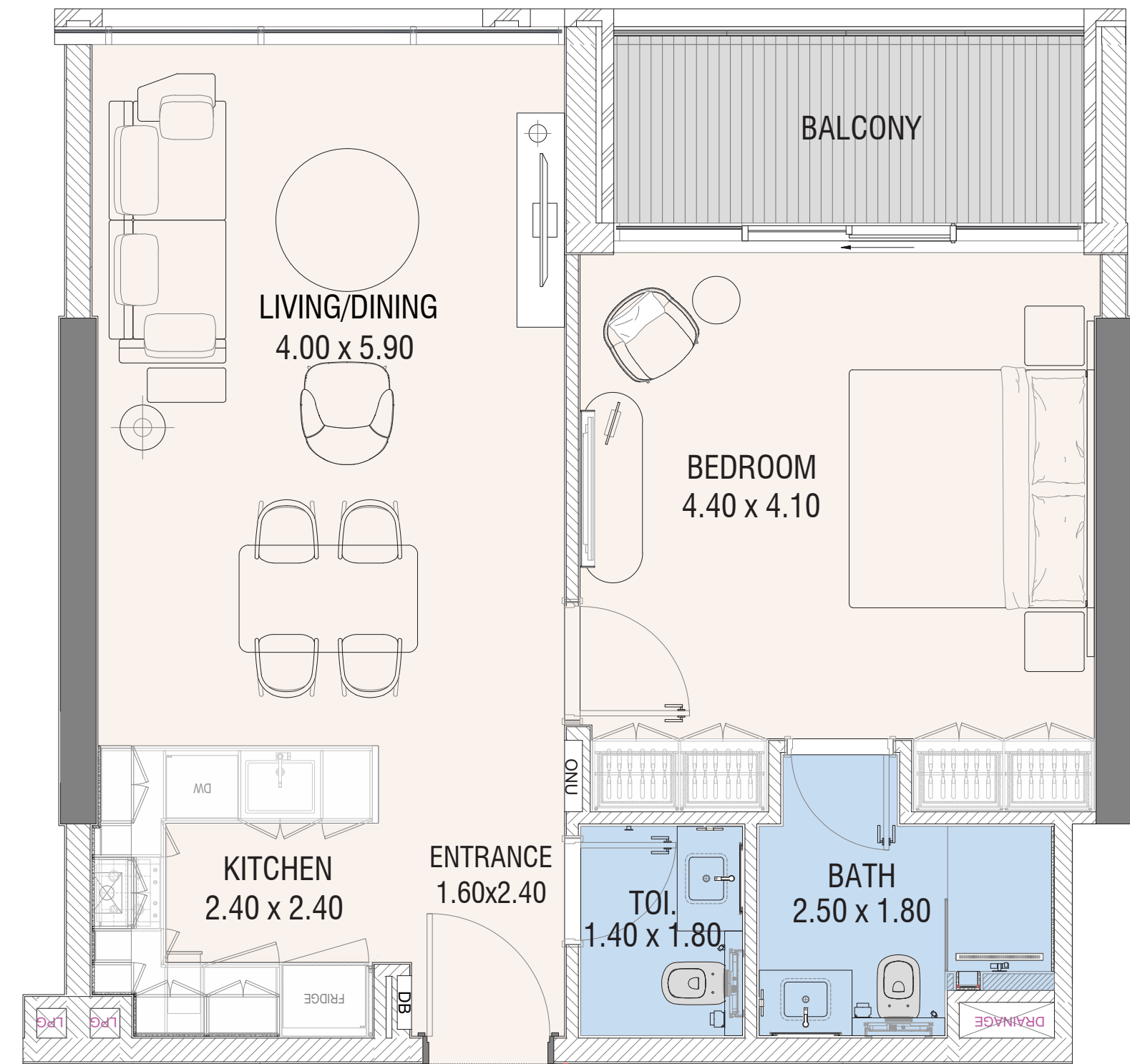


Floor Plan



**1 BEDROOM
TYPE - 1**
AREA=788.35 SQ.FT

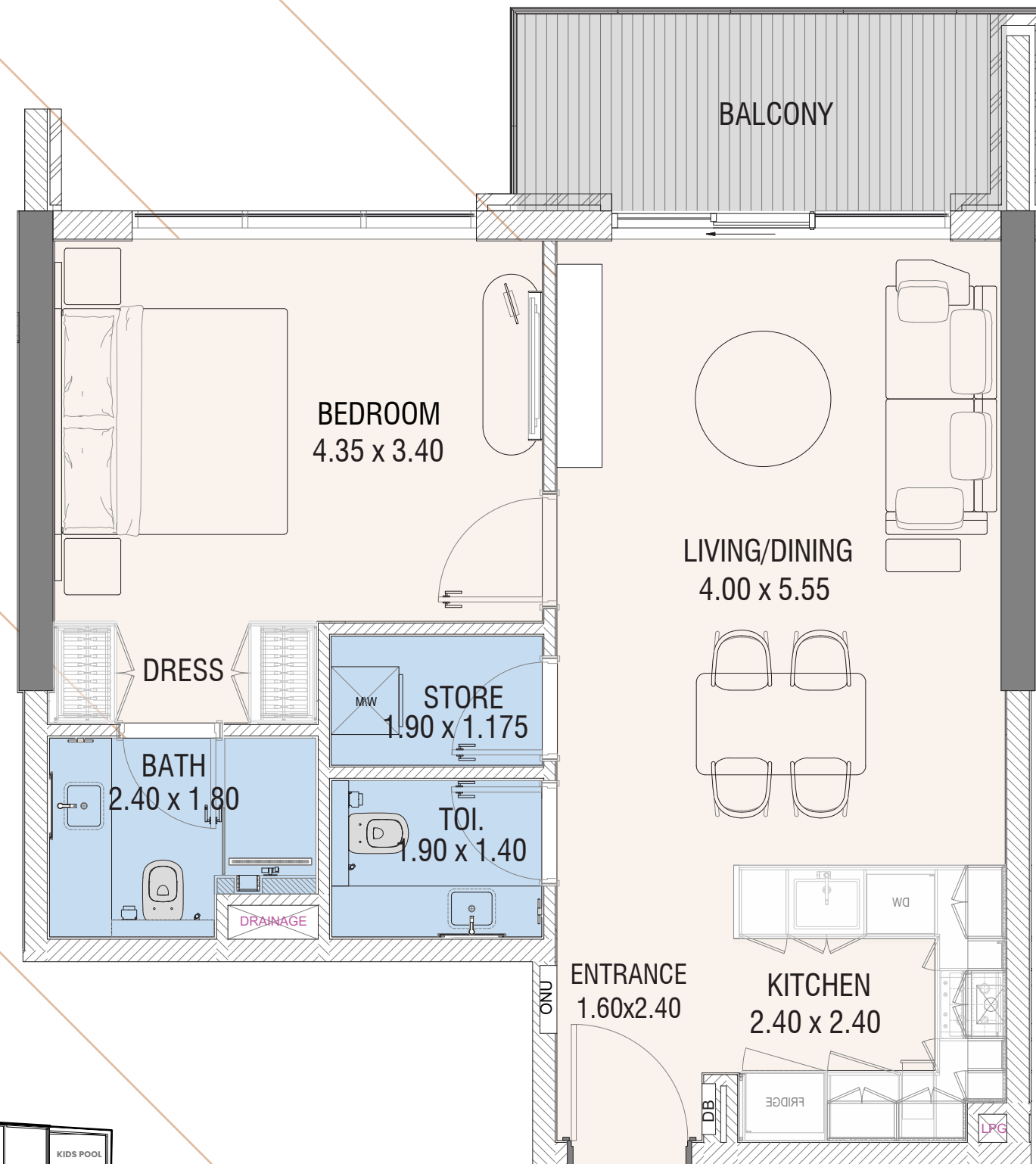
Floor Plan



**1 BEDROOM
TYPE - 2**
AREA=787.06 SQ.FT

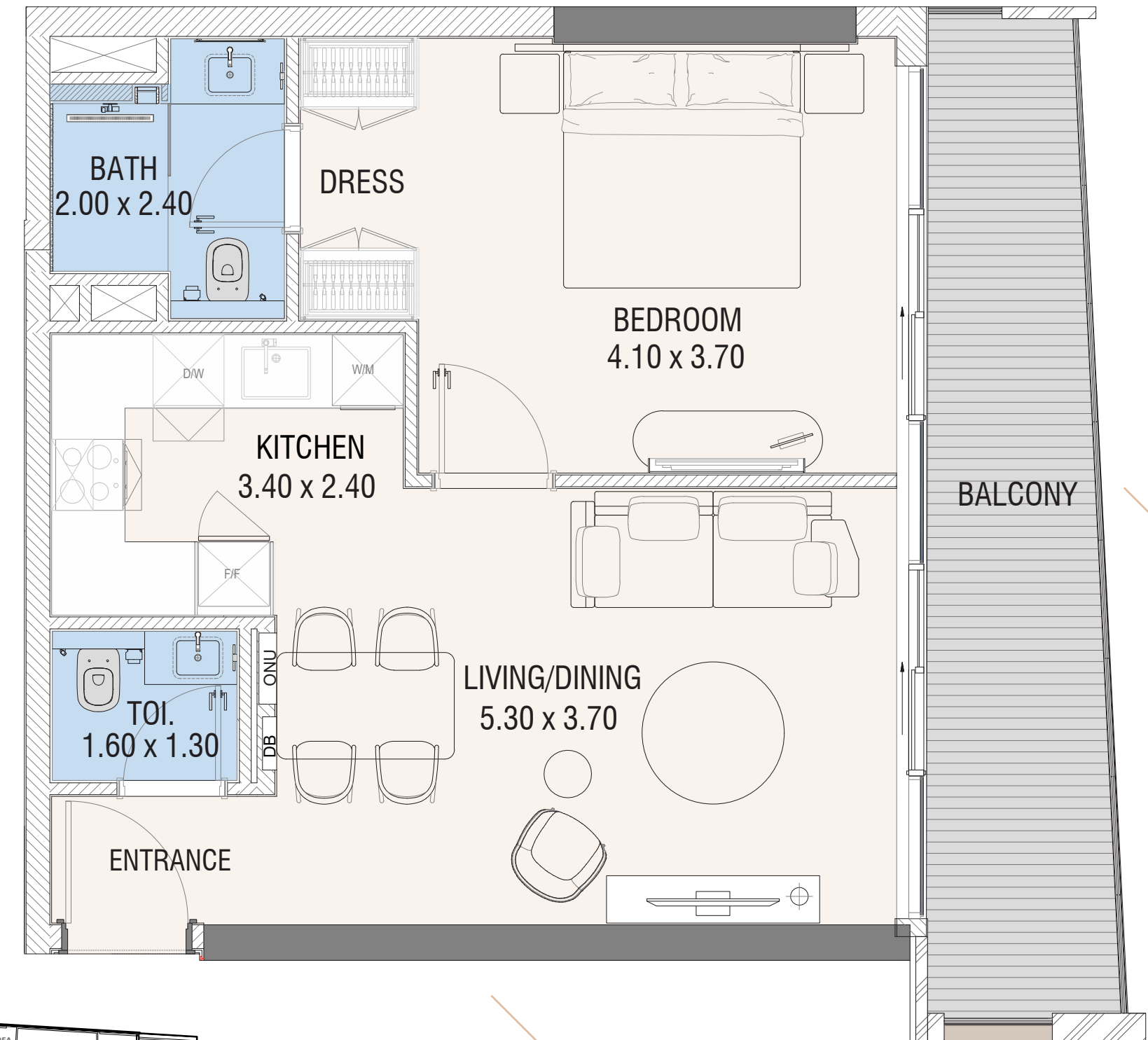


Floor Plan



**1 BEDROOM
TYPE - 3**
AREA=771.23 SQ.FT

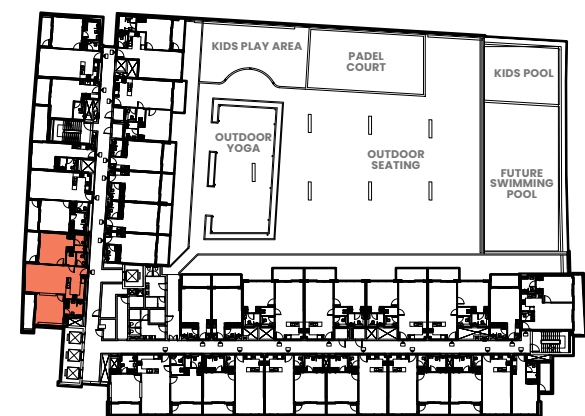
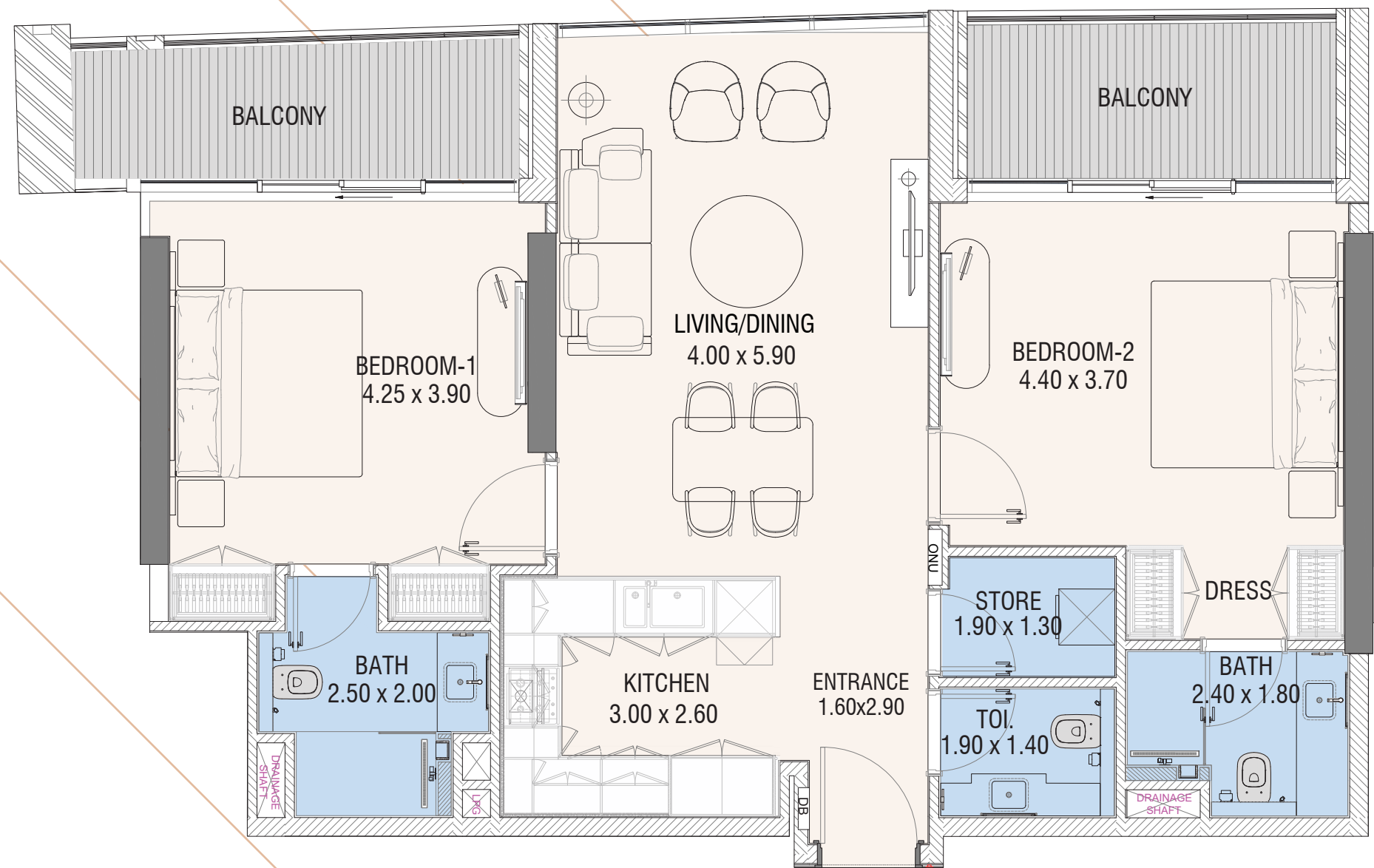
Floor Plan



**1 BEDROOM
TYPE - 4**
AREA=754.99 SQ.FT

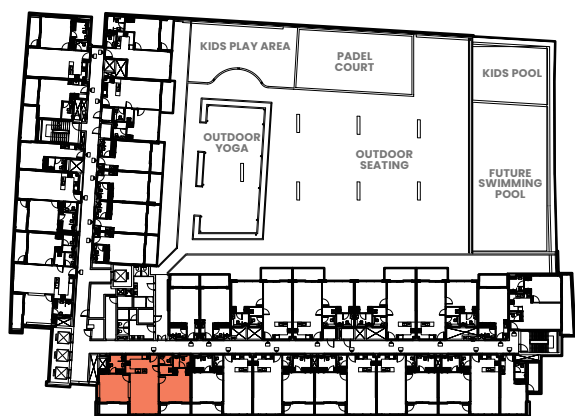
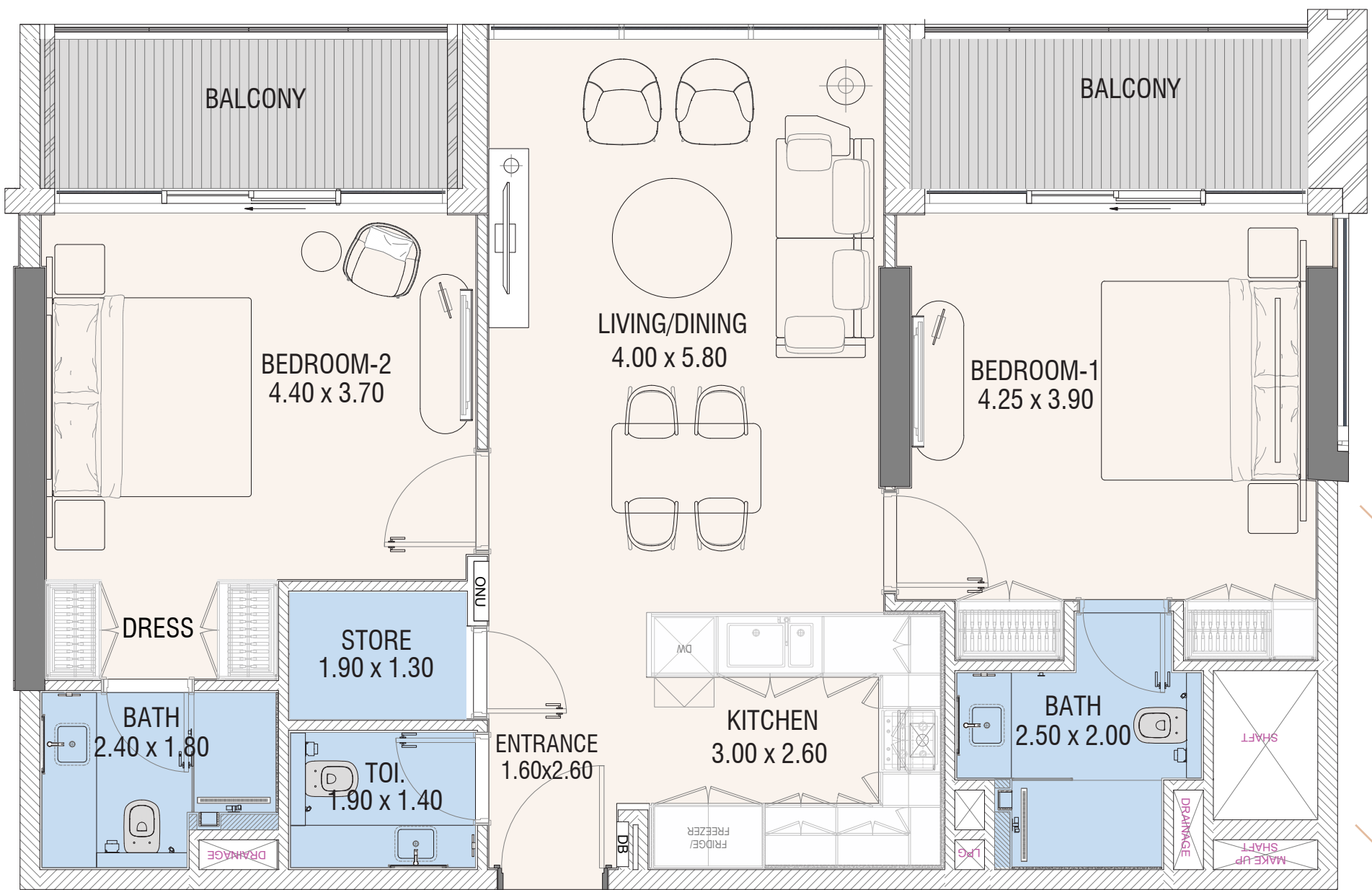


Floor Plan



**2 BEDROOM
TYPE - 1**
AREA=1198.56 SQ.FT

Floor Plan




**2 BEDROOM
TYPE - 2**
AREA=1171.32 SQ.FT



BUY | SELL | RENT | PROPERTY MANAGEMENT SERVICES

GET IN TOUCH WITH US

 **+971 56 818 8610**

 **Head Office:**
Office 25 | Oasis Center | Sheikh Zayed Road | Dubai | +971 4 338 7300

Branch Office:
Retail 1 | Safi Apartments | Town Square Dubai | Dubai | +971 4 398 1528