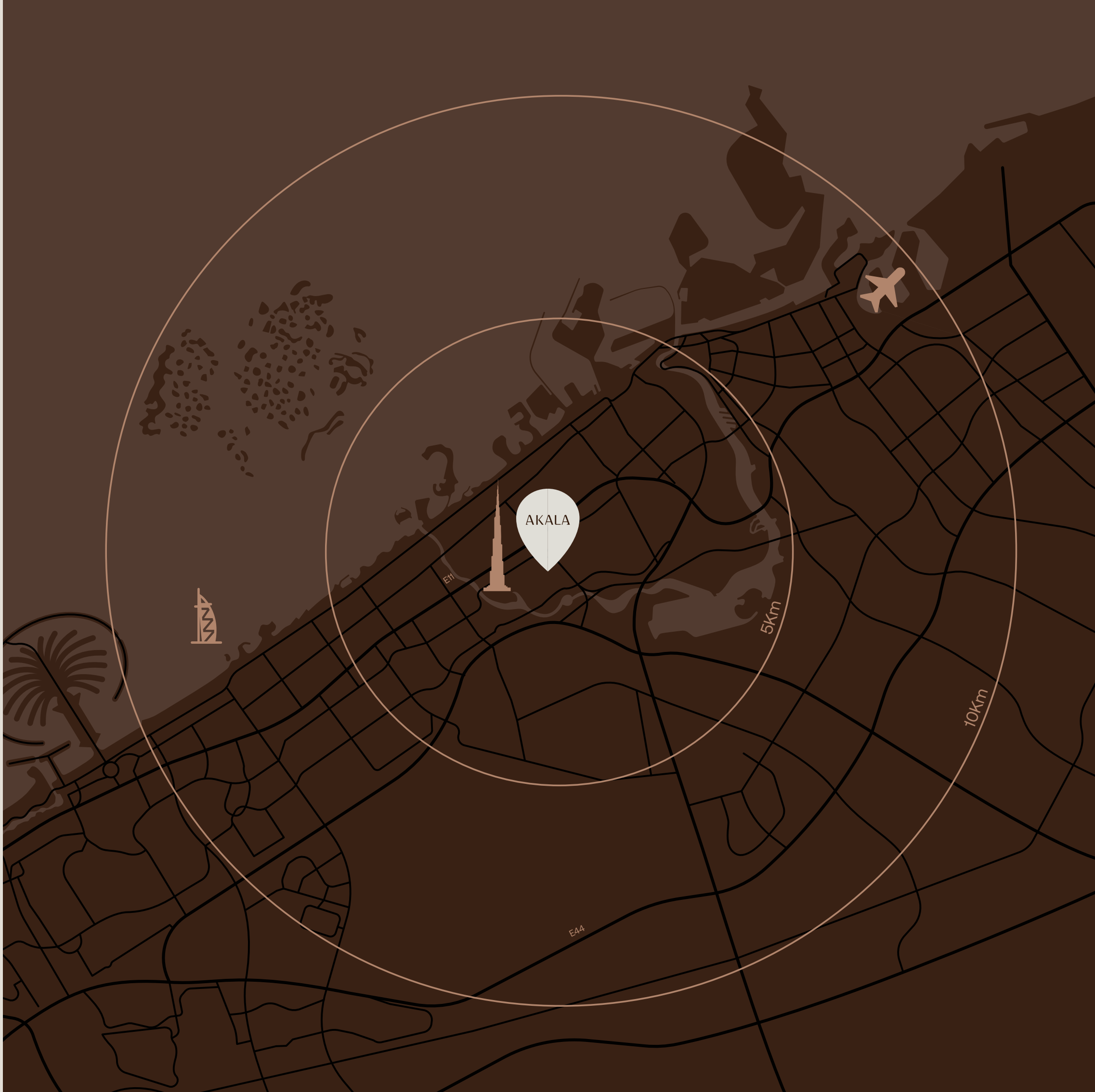
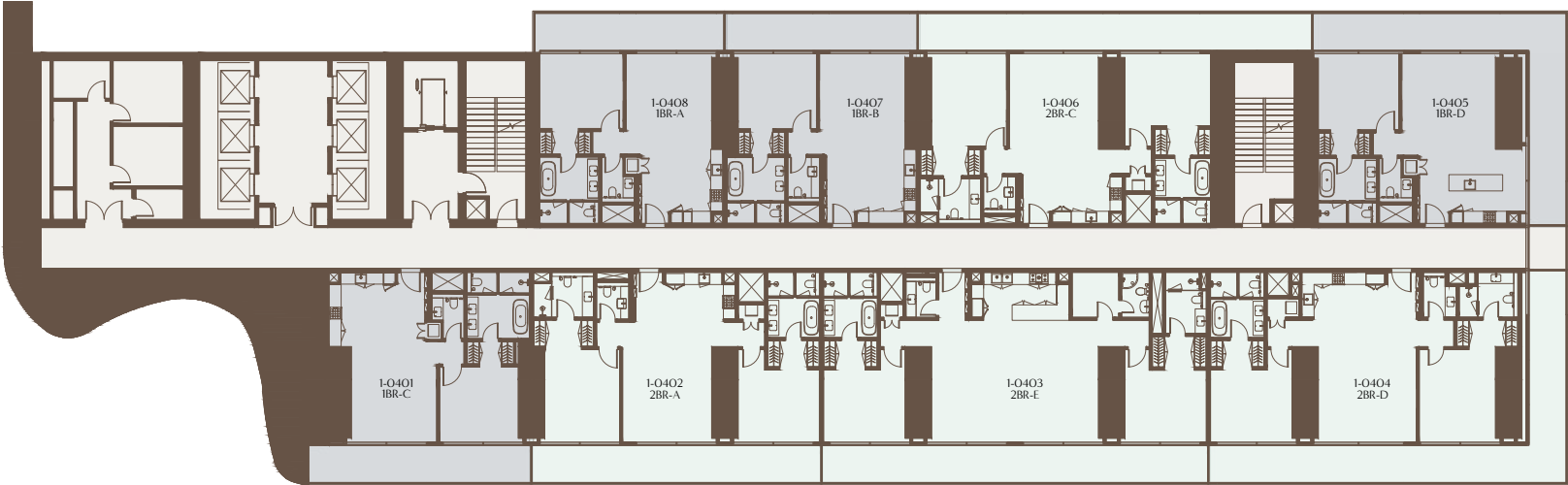


AKALA



4TH TO 17TH FLOOR PLAN

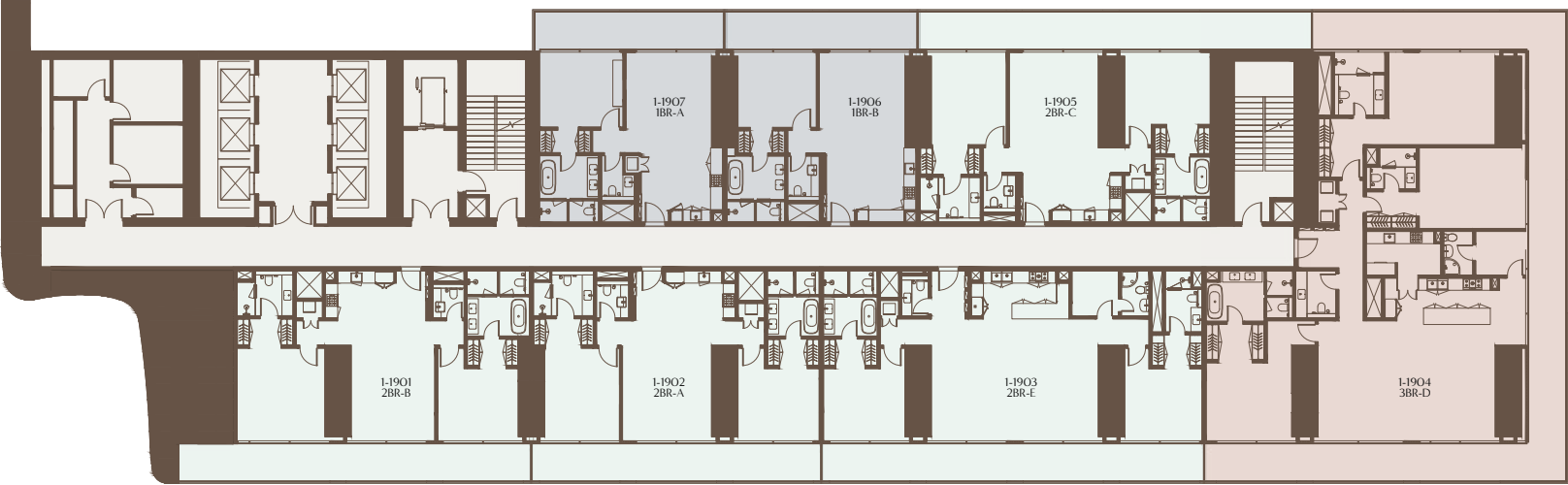
1 BEDROOM 2 BEDROOMS 3 BEDROOMS 4 BEDROOMS 5 BEDROOMS 6 BEDROOMS



1-Measurements are indicative 'finish to finish' in Metric & Imperial excluding construction tolerance. 2-Plot/unit dimensions may vary from brochure, and unit types/plans may exist as mirrored versions; 3-All images used are for illustrative purposes only. 4-Unless stated otherwise, all fittings and interior decorative items shown are for illustrative purposes only. 5-The developer reserves the right to make alterations, at its absolute discretion, without any liability whatsoever up to the final 'as built' status.

19TH TO 29TH FLOOR PLAN

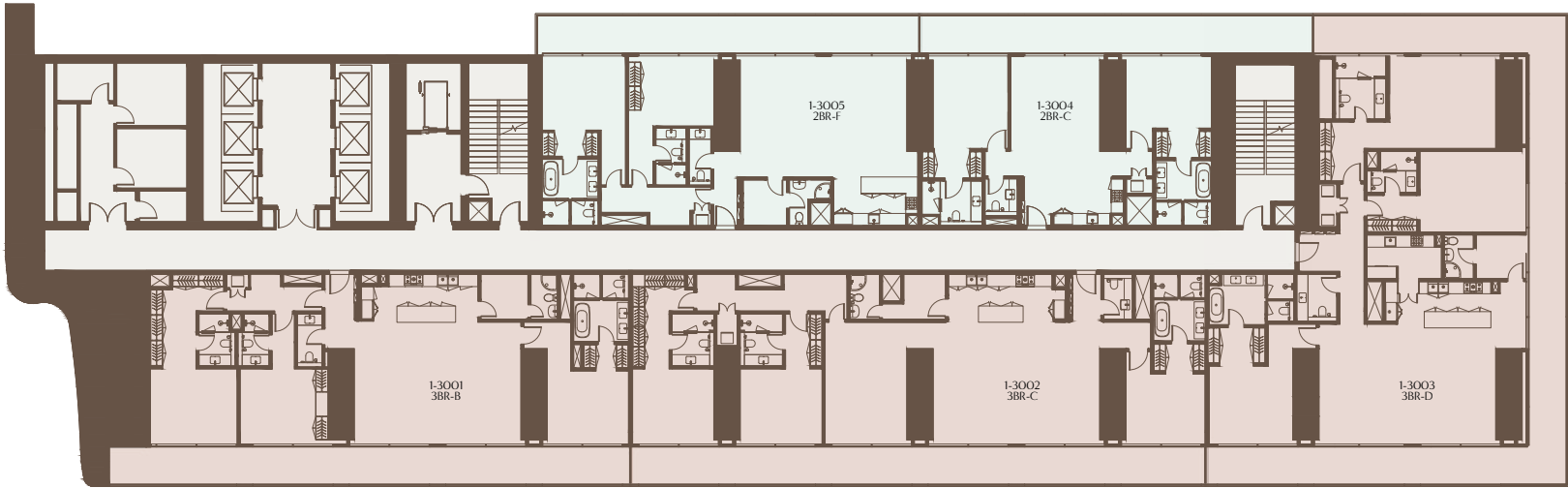
1 BEDROOM 2 BEDROOMS 3 BEDROOMS 4 BEDROOMS 5 BEDROOMS 6 BEDROOMS



1-Measurements are indicative 'finish to finish' in Metric & Imperial excluding construction tolerance. 2-Plot/unit dimensions may vary from brochure, and unit types/plans may exist as mirrored versions; 3-All images used are for illustrative purposes only. 4-Unless stated otherwise, all fittings and interior decorative items shown are for illustrative purposes only. 5-The developer reserves the right to make alterations, at its absolute discretion, without any liability whatsoever up to the final 'as built' status.

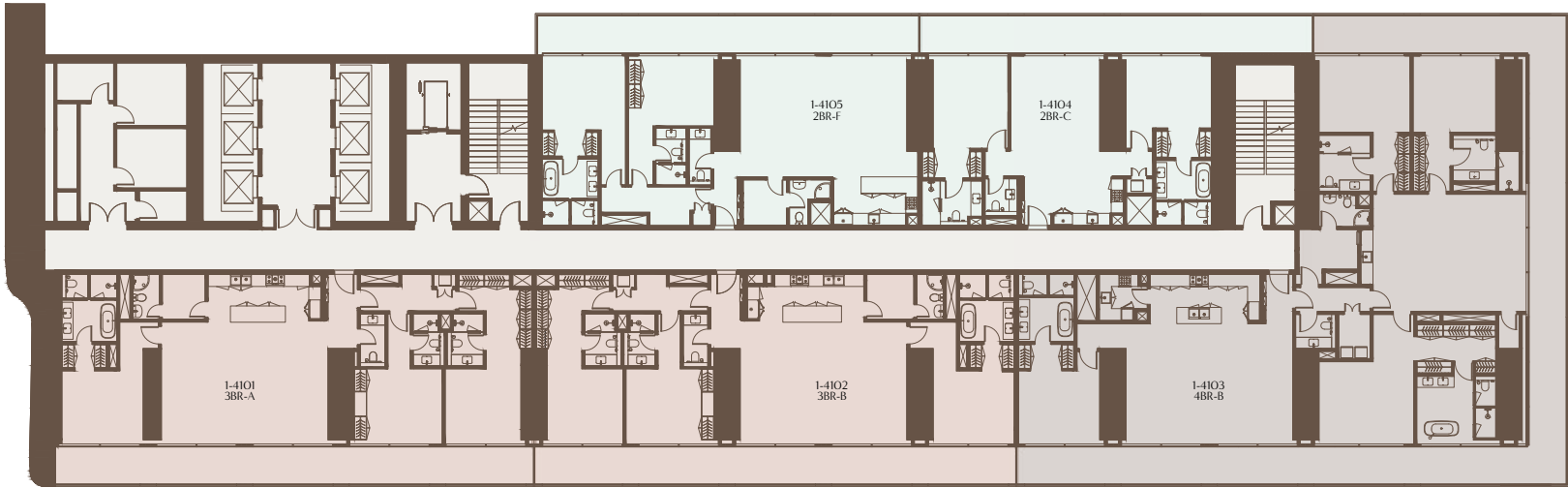
30TH TO 39TH FLOOR PLAN

1 BEDROOM 2 BEDROOMS 3 BEDROOMS 4 BEDROOMS 5 BEDROOMS 6 BEDROOMS



41ST TO 47TH FLOOR PLAN

1 BEDROOM 2 BEDROOMS 3 BEDROOMS 4 BEDROOMS 5 BEDROOMS 6 BEDROOMS

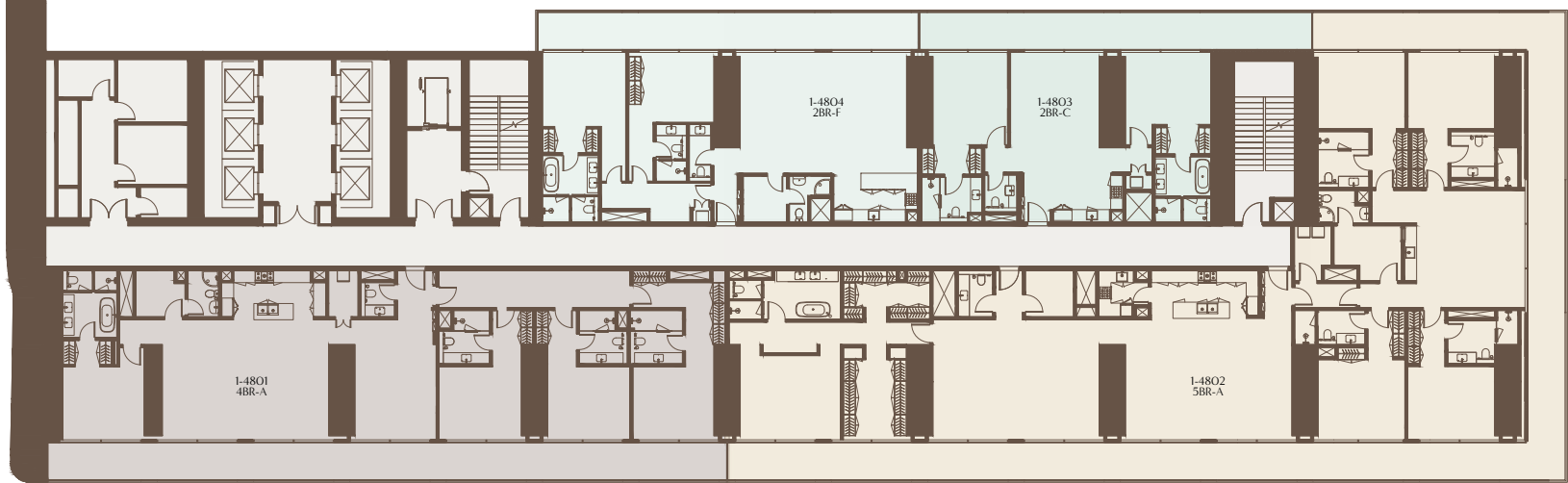


1-Measurements are indicative 'finish to finish' in Metric & Imperial excluding construction tolerance. 2-Plot/unit dimensions may vary from brochure, and unit types/plans may exist as mirrored versions; 3-All images used are for illustrative purposes only. 4-Unless stated otherwise, all fittings and interior decorative items shown are for illustrative purposes only. 5-The developer reserves the right to make alterations, at its absolute discretion, without any liability whatsoever up to the final 'as built' status.

1-Measurements are indicative 'finish to finish' in Metric & Imperial excluding construction tolerance. 2-Plot/unit dimensions may vary from brochure, and unit types/plans may exist as mirrored versions; 3-All images used are for illustrative purposes only. 4-Unless stated otherwise, all fittings and interior decorative items shown are for illustrative purposes only. 5-The developer reserves the right to make alterations, at its absolute discretion, without any liability whatsoever up to the final 'as built' status.

48TH TO 49TH FLOOR PLAN

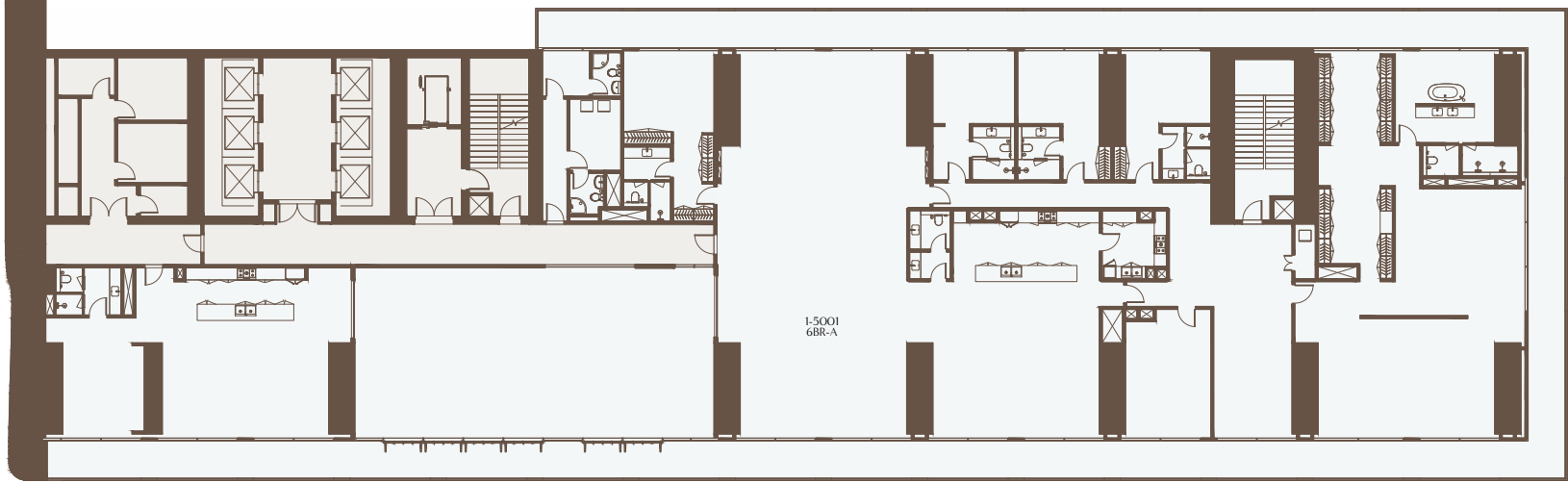
- 1 BEDROOM
- 2 BEDROOMS
- 3 BEDROOMS
- 4 BEDROOMS
- 5 BEDROOMS
- 6 BEDROOMS



1-Measurements are indicative 'finish to finish' in Metric & Imperial excluding construction tolerance. 2-Plot/unit dimensions may vary from brochure, and unit types/plans may exist as mirrored versions; 3-All images used are for illustrative purposes only. 4-Unless stated otherwise, all fittings and interior decorative items shown are for illustrative purposes only. 5-The developer reserves the right to make alterations, at its absolute discretion, without any liability whatsoever up to the final 'as built' status.

50TH FLOOR PLAN

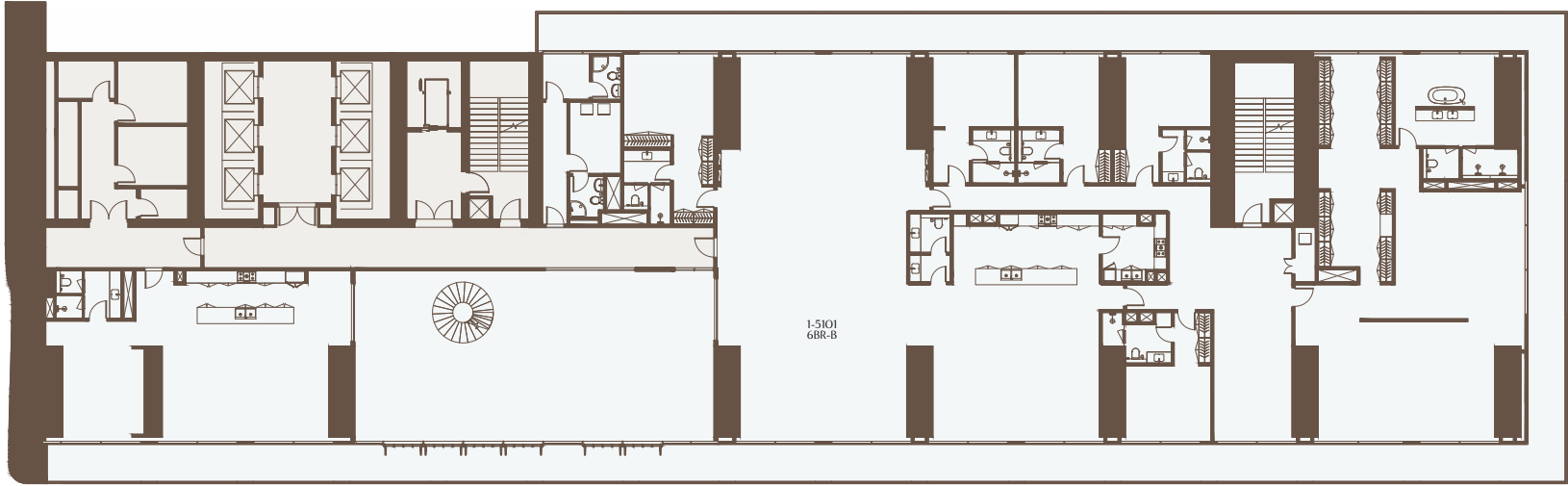
- 1 BEDROOM
- 2 BEDROOMS
- 3 BEDROOMS
- 4 BEDROOMS
- 5 BEDROOMS
- 6 BEDROOMS



1-Measurements are indicative 'finish to finish' in Metric & Imperial excluding construction tolerance. 2-Plot/unit dimensions may vary from brochure, and unit types/plans may exist as mirrored versions; 3-All images used are for illustrative purposes only. 4-Unless stated otherwise, all fittings and interior decorative items shown are for illustrative purposes only. 5-The developer reserves the right to make alterations, at its absolute discretion, without any liability whatsoever up to the final 'as built' status.

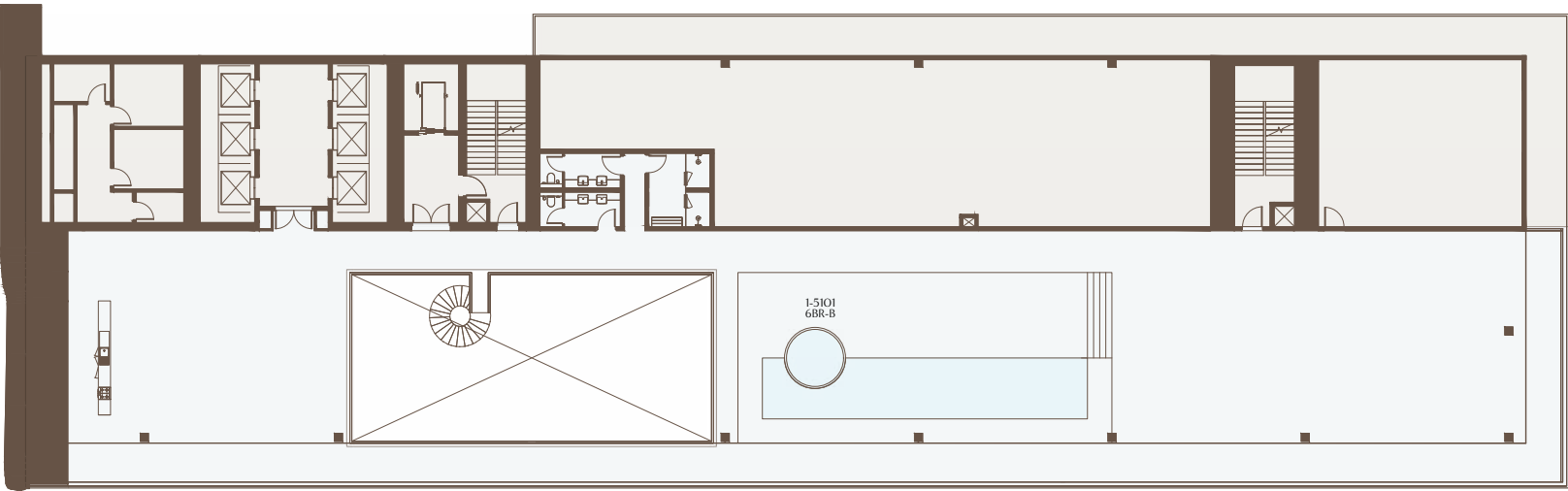
51ST FLOOR PLAN

1 BEDROOM 2 BEDROOMS 3 BEDROOMS 4 BEDROOMS 5 BEDROOMS 6 BEDROOMS



ROOF FLOOR PLAN

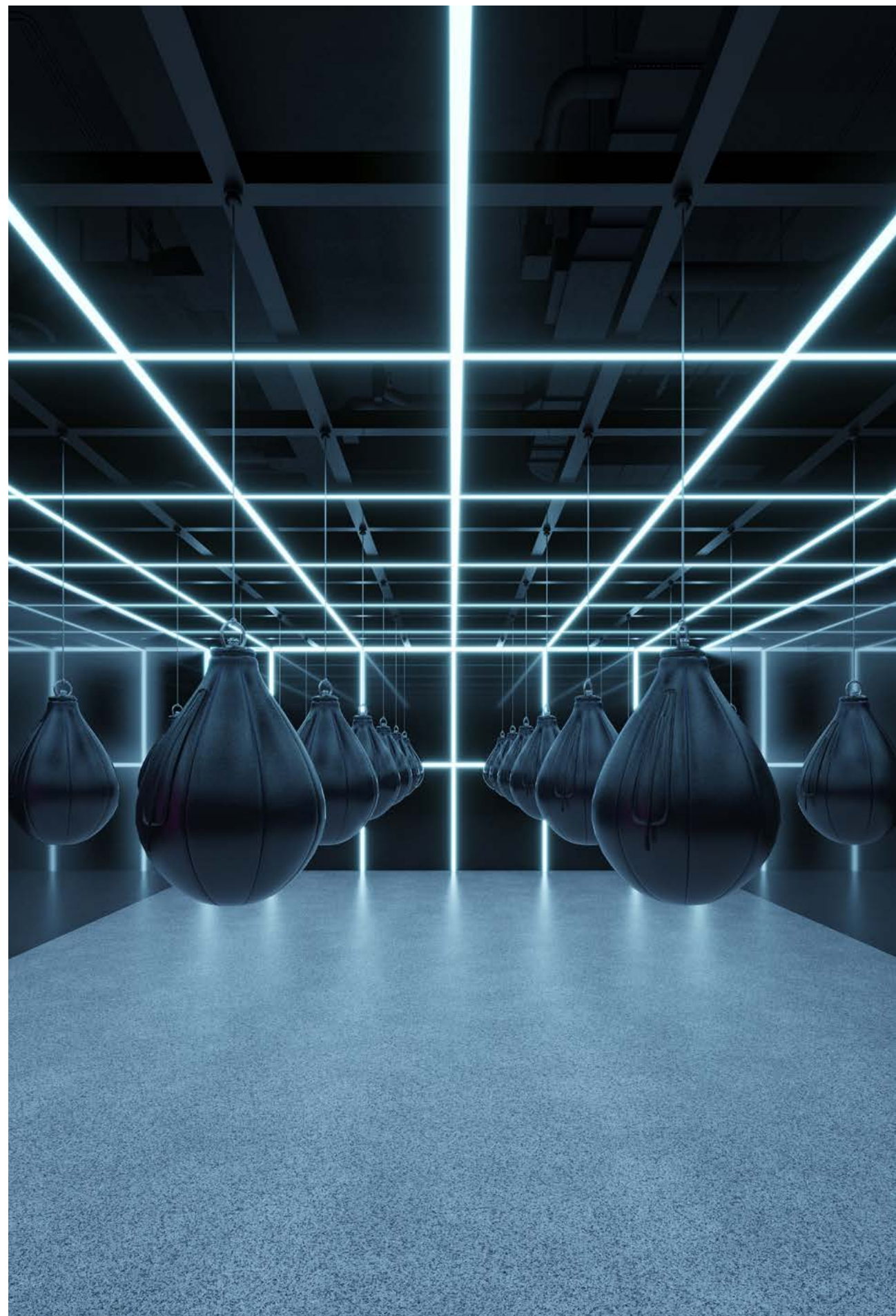
1 BEDROOM 2 BEDROOMS 3 BEDROOMS 4 BEDROOMS 5 BEDROOMS 6 BEDROOMS



1-Measurements are indicative 'finish to finish' in Metric & Imperial excluding construction tolerance. 2-Plot/unit dimensions may vary from brochure, and unit types/plans may exist as mirrored versions; 3-All images used are for illustrative purposes only. 4-Unless stated otherwise, all fittings and interior decorative items shown are for illustrative purposes only. 5-The developer reserves the right to make alterations, at its absolute discretion, without any liability whatsoever up to the final 'as built' status.



1-Measurements are indicative 'finish to finish' in Metric & Imperial excluding construction tolerance. 2-Plot/unit dimensions may vary from brochure, and unit types/plans may exist as mirrored versions; 3-All images used are for illustrative purposes only. 4-Unless stated otherwise, all fittings and interior decorative items shown are for illustrative purposes only. 5-The developer reserves the right to make alterations, at its absolute discretion, without any liability whatsoever up to the final 'as built' status.





HOME, WHERE WELLNESS BEGINS

Each Akala residence is designed with integrated advanced wellness features, thoughtfully curated to optimize daily health and offer opportunities for further personalization.

Acoustic Comfort

Superior soundproofing and acoustic zoning minimize ambient noise and enhance sonic clarity. This ensures a tranquil and undisturbed atmosphere ideal for sleep, focused work, or deep relaxation.

Climate Zoning

Individually controlled climate zones in every room allow for precise temperature and humidity adjustments. This personalized comfort promotes physical recovery, restful sleep, and overall daily wellbeing.

Circadian Lighting

Smart lighting systems dynamically adjust in color and intensity throughout the day, aligning the body's natural circadian rhythm to enhance restorative rest and sustained energy levels.

Vitamin C-Infused Showers

Revitalize daily routines with spa-grade Vitamin C showers that neutralize chlorine, soften water, and nourish skin and hair, turning bathing into a wellness ritual.

Natural Balancing and Smart Tech Integration

Smart home technology allows intuitive control of air quality, and lighting at a touch, while natural materials and designs and products that minimise EMF ground your space in calm, balanced energy.

DESIGNED FOR RENEWAL

Air & Water Purification

Advanced filtration systems ensure consistently clean and purified air and water throughout each residence. By effectively reducing pollutants, allergens, and toxins, these systems establish a healthier foundation for daily living.

High-Performance Glass

Advanced windows provide superior acoustic insulation, block harmful UV rays, and offer electromagnetic shielding ensuring peace, protection, and privacy.

Sustainable by Design

Engineered to meet LEED Gold and WELL Silver standards, each residence reflects our commitment to environmental stewardship and holistic wellbeing. Sleep-Optimized Bedrooms Bedrooms are intentionally crafted as havens for restorative sleep, featuring full blackout, silent climate control, and the use of EMF-conscious materials to synergistically promote deeper and higher-quality sleep.

Wellness Furniture and Amenities Upgrade

Residents will have the option to upgrade to a turnkey furnishing and lifestyle essentials package - expertly curated to reflect the highest standards of wellness and functionality - including essentials such as organic mattresses for spine alignment, breathable bamboo linens and curated pillow selection - including wool and goose feather options - for deeper, higher-quality sleep, massage table for in-house treatments, and adjustable sit-stand desks or wellness workstations.

Crafted Natural Materials

From reconstituted stone to frosted glass and warm wood, each finish is selected for its tactile and environmental quality, encouraging sensory balance and a grounded, natural aesthetic.

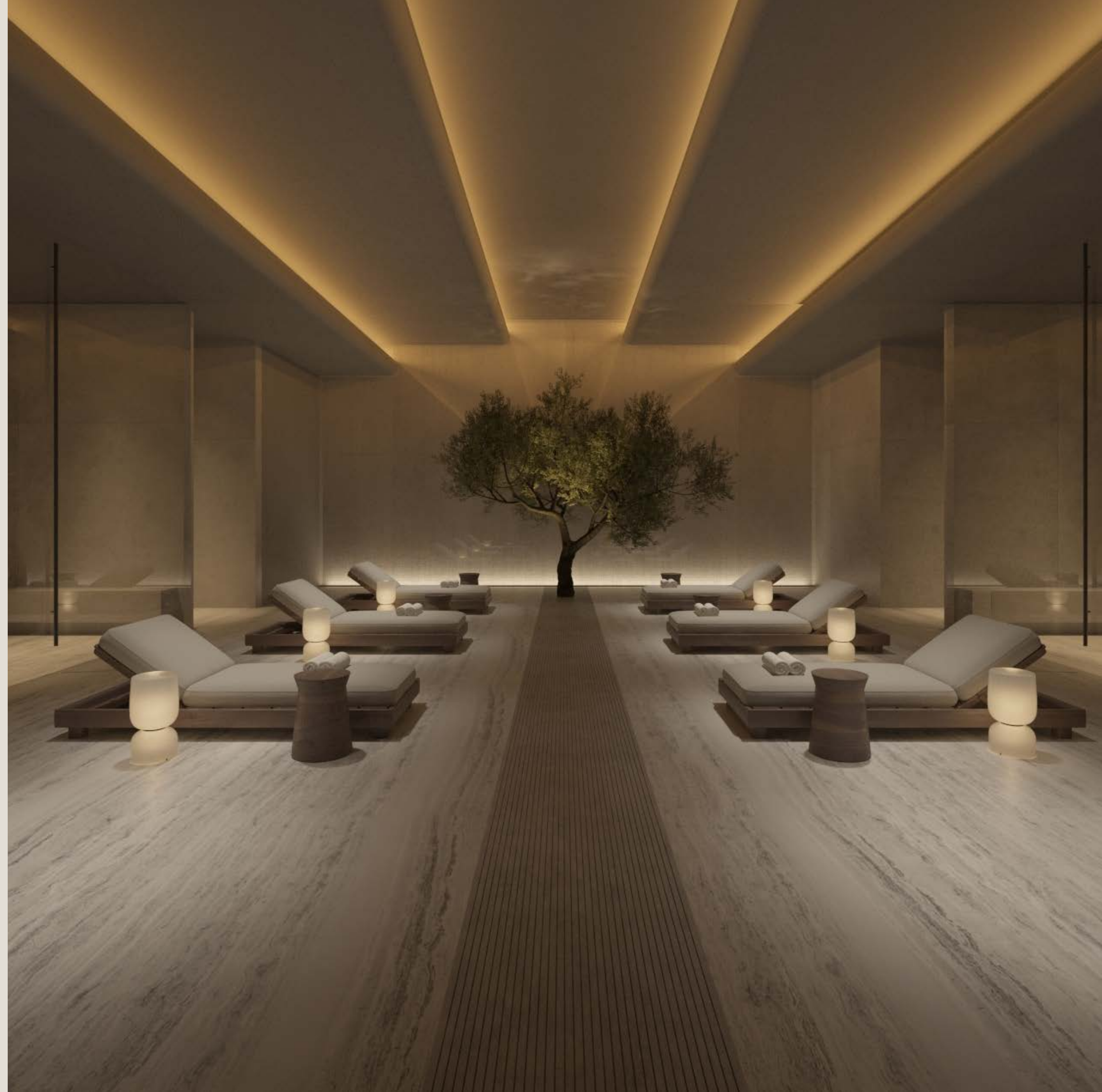
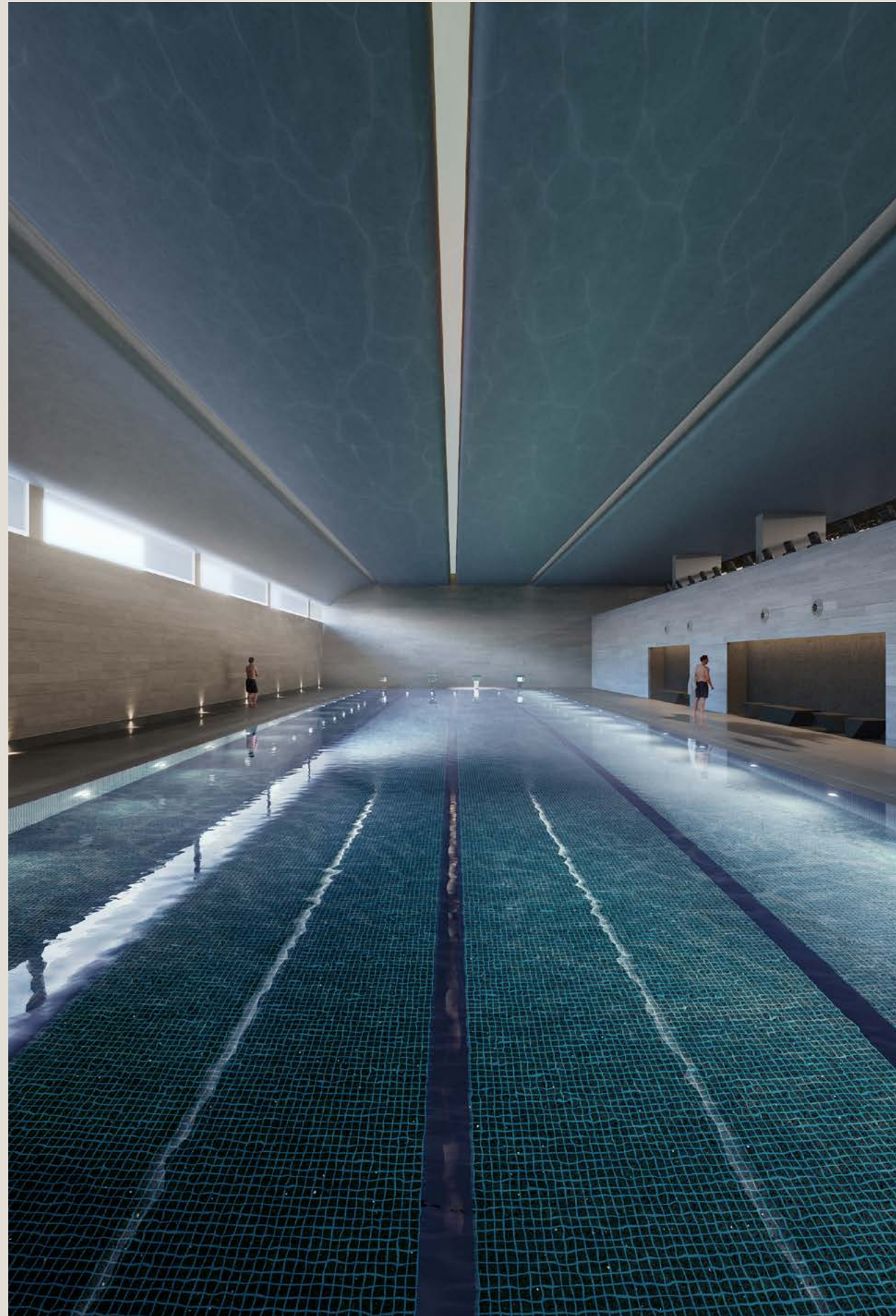
Smart Lighting, Synchronised with You

Residents can easily adjust lighting scenes using apps or keypads. From soft dawn to ambient evening, illumination is intentionally crafted to enhance every moment of the day.

Personalised Climate Comfort

Integrated smart thermostats enable each resident to intuitively tune their space. Whether cooling a bedroom or warming a bath, indoor climate adapts to your personal rhythm.





AKALA MEMBERSHIP

Akala's hotels feature an exclusive, members-only wellness club, a sanctuary of state-of-the-art amenities designed to elevate every guest's health and well-being. Here, the focus is on crafting a transformative, weightless experience for guests where stress, distractions, and anxiety dissolve, allowing for complete immersion in their personal health journey.

These thoughtfully curated wellness facilities offer a comprehensive spectrum of transformative treatments, empowering guests to rejuvenate, recover, and embark on a path to optimal health.

Through advanced medical interventions, deeply relaxing therapies, and invigorating fitness activities, Akala ensures that every aspect of the guest experience is centered on holistic well-being.





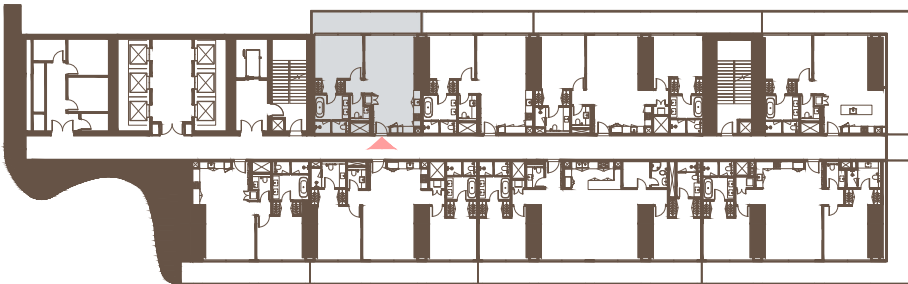
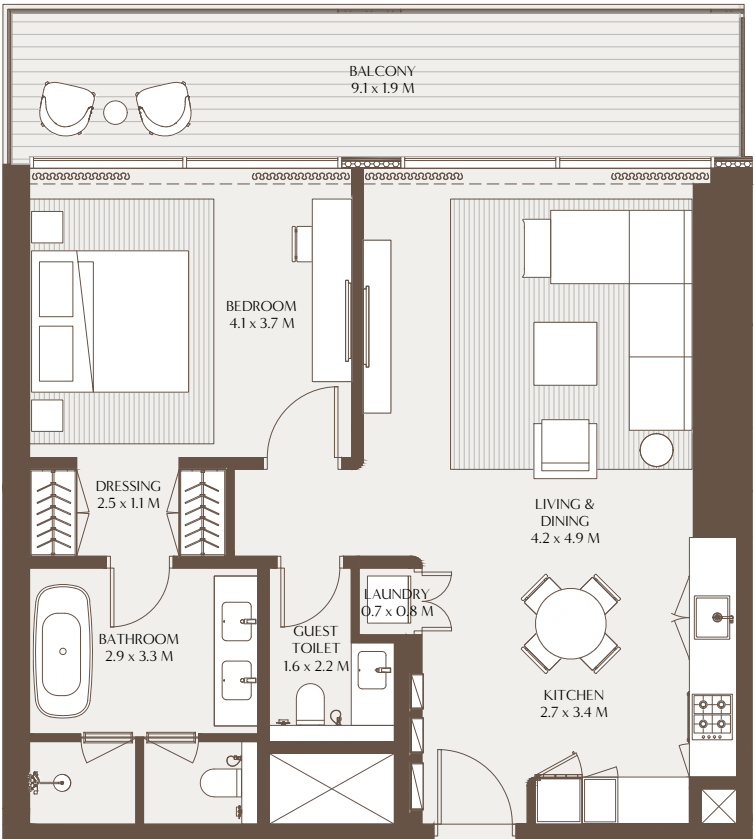
THE ELEMENTS 1 BEDROOM RESIDENCE

Thoughtfully designed for elevated urban living, The Elements one bedroom residence features an open-plan kitchen seamlessly flowing into the living and dining areas, framed by floor-to-ceiling glass that invites natural light and calming views. The en-suite master bedroom offers a private sanctuary, complete with a spa-like bathroom featuring both a rainfall shower and deep soaking tub. A powder room, dedicated laundry space, and generous wraparound balconies, accessible from both the living area and bedroom, complete this serene and sophisticated retreat.



The Elements - 1 Bedroom Residence A

Unit Area: 78.47 Sqm (844.65 Sqft) | Balcony Area: 17.78 Sqm (191.36 Sqft) | Total Area: 96.25 Sqm (1,036.01 Sqft)



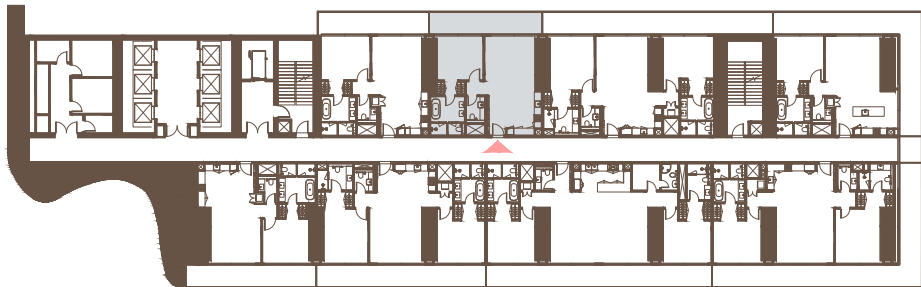
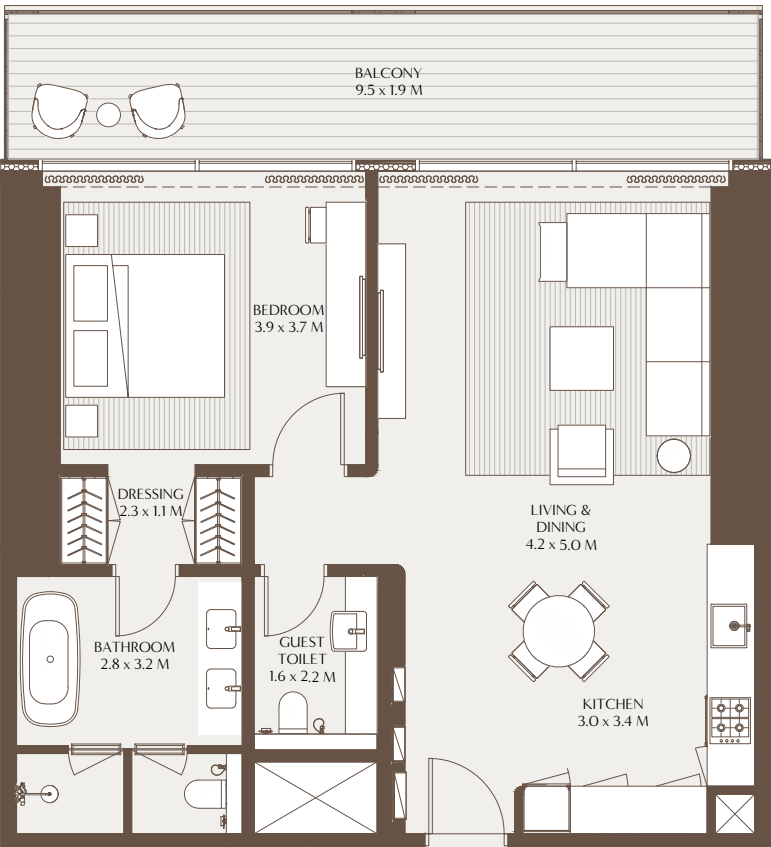
4TH TO 17TH, 19TH TO 29TH FLOOR



1-Measurements are indicative 'finish to finish' in Metric & Imperial excluding construction tolerance. 2-Plot/unit dimensions may vary from brochure, and unit types/plans may exist as mirrored versions; 3-All images used are for illustrative purposes only. 4-Unless stated otherwise, all fittings and interior decorative items shown are for illustrative purposes only. 5-The developer reserves the right to make alterations, at its absolute discretion, without any liability whatsoever up to the final 'as built' status.

The Elements - 1 Bedroom Residence B

Unit Area: 79.08 Sqm (851.21 Sqft) | Balcony Area: 17.92 Sqm (192.89 Sqft) | Total Area: 97.00 Sqm (1,044.10 Sqft)



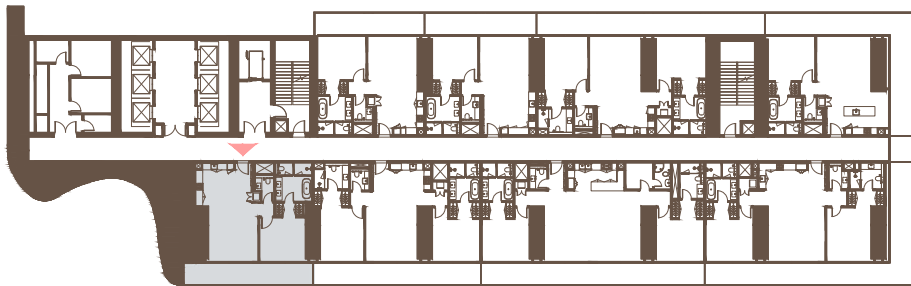
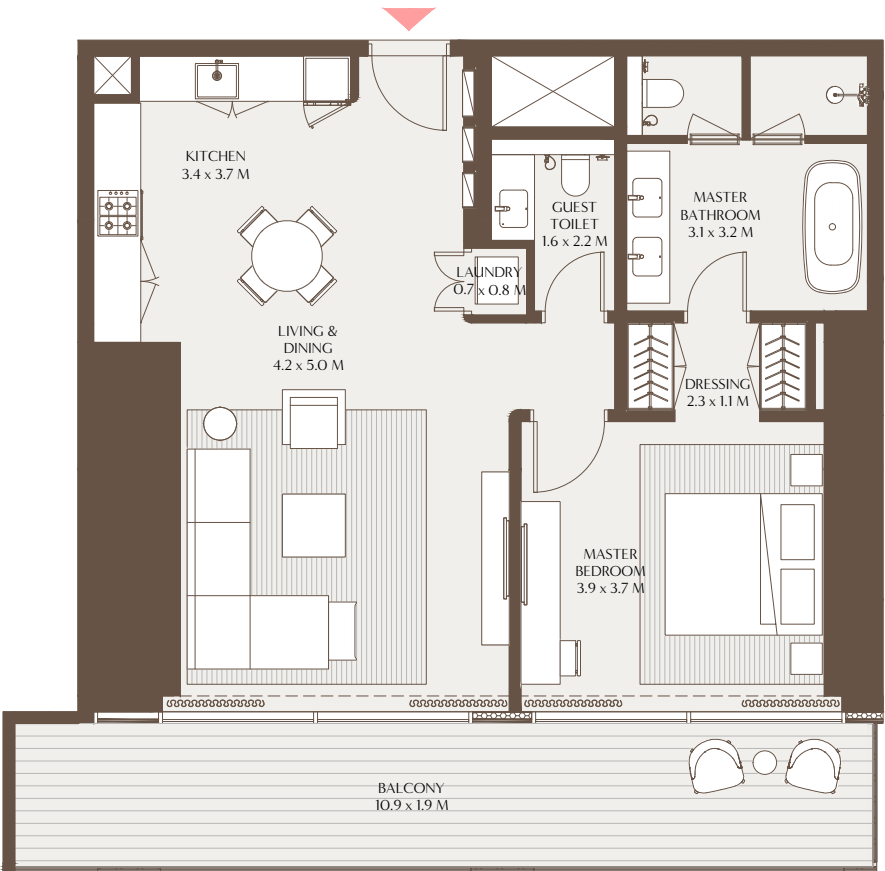
4TH TO 17TH, 19TH TO 29TH FLOOR



1-Measurements are indicative 'finish to finish' in Metric & Imperial excluding construction tolerance. 2-Plot/unit dimensions may vary from brochure, and unit types/plans may exist as mirrored versions; 3-All images used are for illustrative purposes only. 4-Unless stated otherwise, all fittings and interior decorative items shown are for illustrative purposes only. 5-The developer reserves the right to make alterations, at its absolute discretion, without any liability whatsoever up to the final 'as built' status.

The Elements - 1 Bedroom Residence C

Unit Area: 80.82 Sqm (869.94 Sqft) | Balcony Area: 31.01 Sqm (333.79 Sqft) | Total Area: 111.83 Sqm (1,203.73 Sqft)

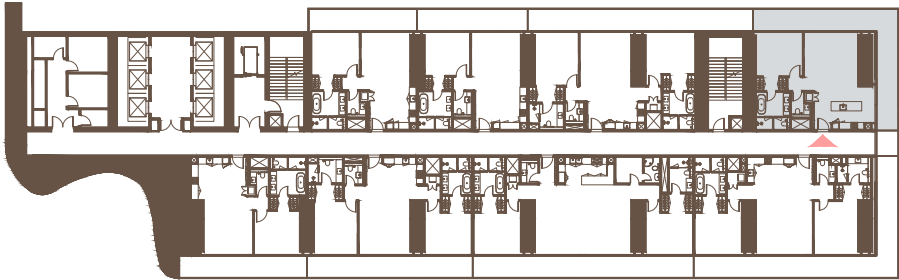
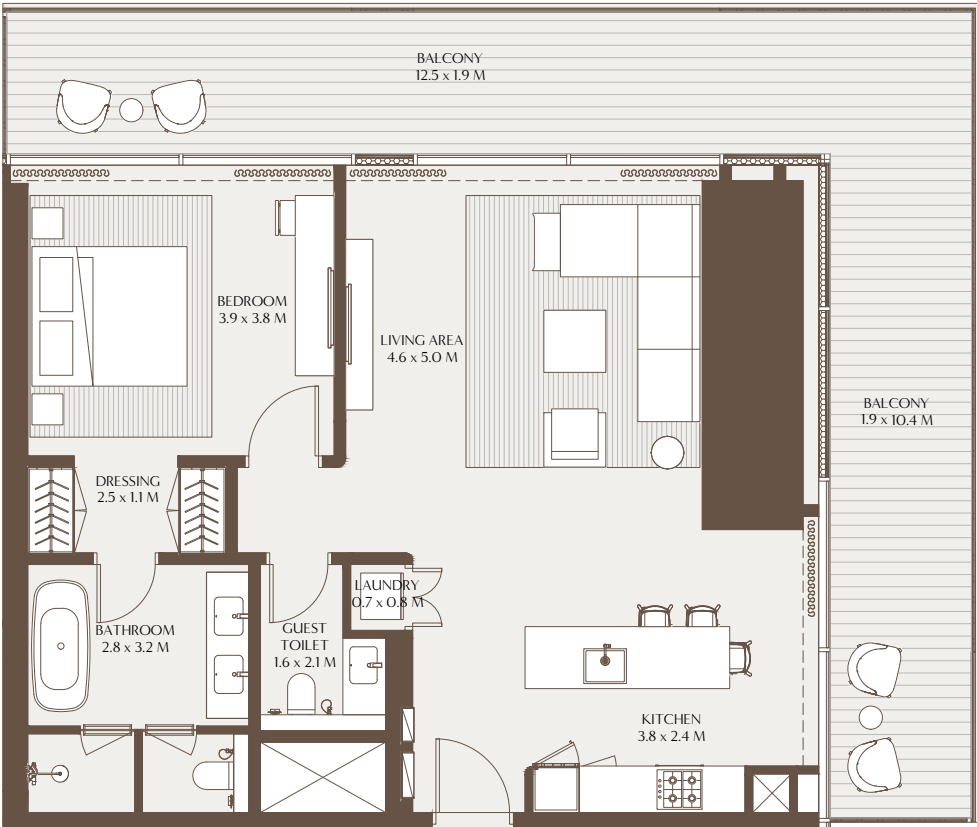


4TH TO 17TH FLOOR



The Elements - 1 Bedroom Residence D

Unit Area: 91.01 Sqm (979.62 Sqft) | Balcony Area: 39.68 Sqm (427.11 Sqft) | Total Area: 130.69 Sqm (1,406.73 Sqft)



4TH TO 17TH FLOOR



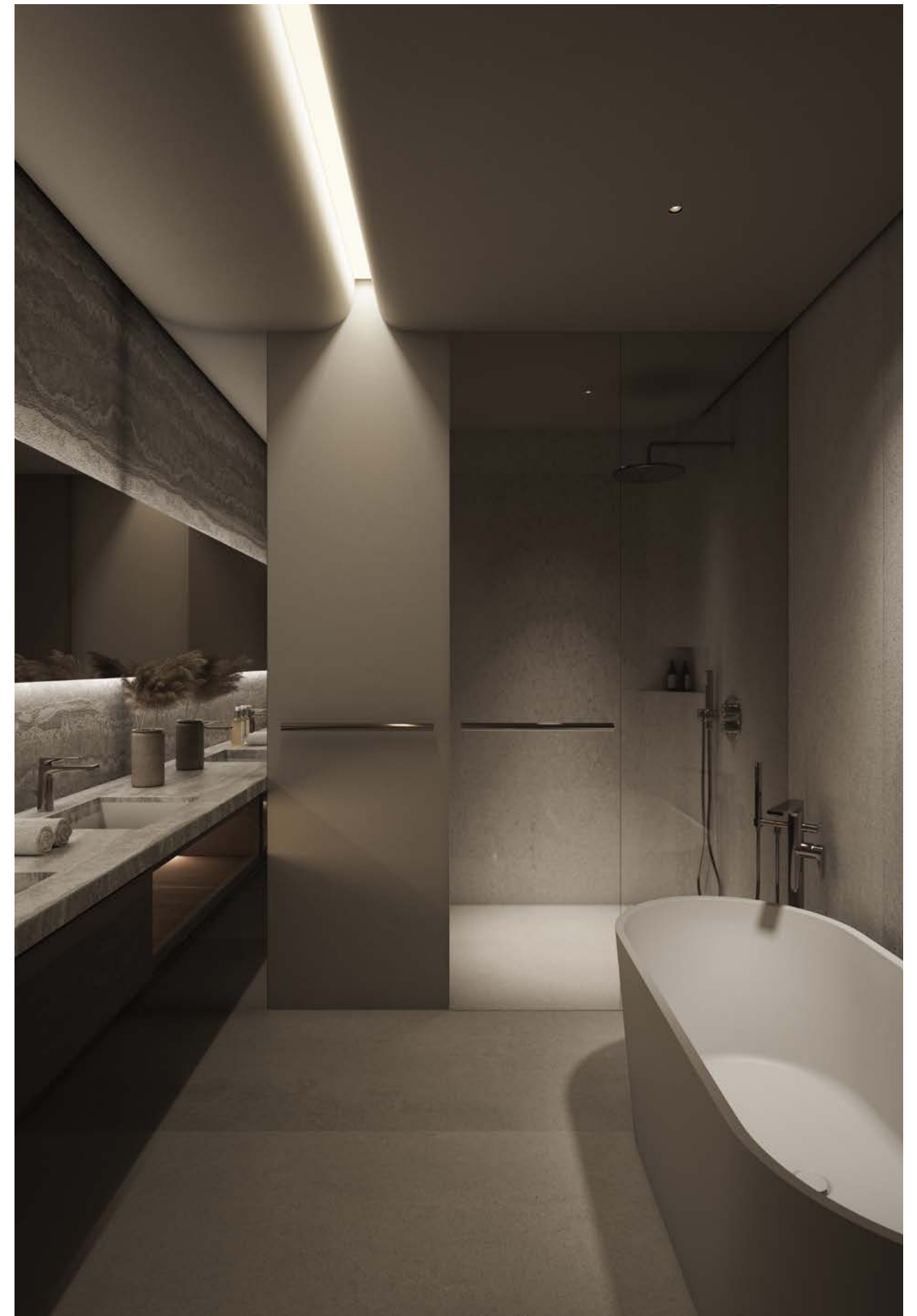
1-Measurements are indicative 'finish to finish' in Metric & Imperial excluding construction tolerance. 2-Plot/unit dimensions may vary from brochure, and unit types/plans may exist as mirrored versions; 3-All images used are for illustrative purposes only. 4-Unless stated otherwise, all fittings and interior decorative items shown are for illustrative purposes only. 5-The developer reserves the right to make alterations, at its absolute discretion, without any liability whatsoever up to the final 'as built' status.

1-Measurements are indicative 'finish to finish' in Metric & Imperial excluding construction tolerance. 2-Plot/unit dimensions may vary from brochure, and unit types/plans may exist as mirrored versions; 3-All images used are for illustrative purposes only. 4-Unless stated otherwise, all fittings and interior decorative items shown are for illustrative purposes only. 5-The developer reserves the right to make alterations, at its absolute discretion, without any liability whatsoever up to the final 'as built' status.

THE ELEMENTS 2 BEDROOM RESIDENCE

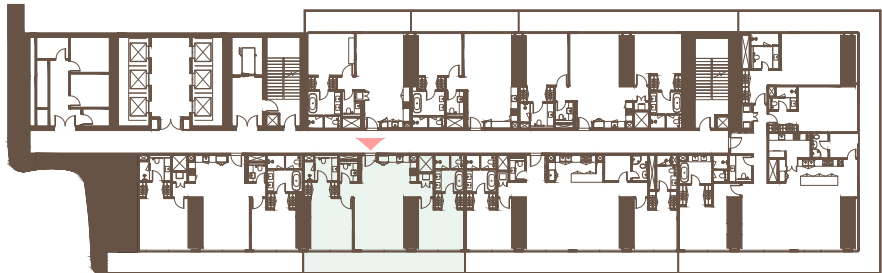
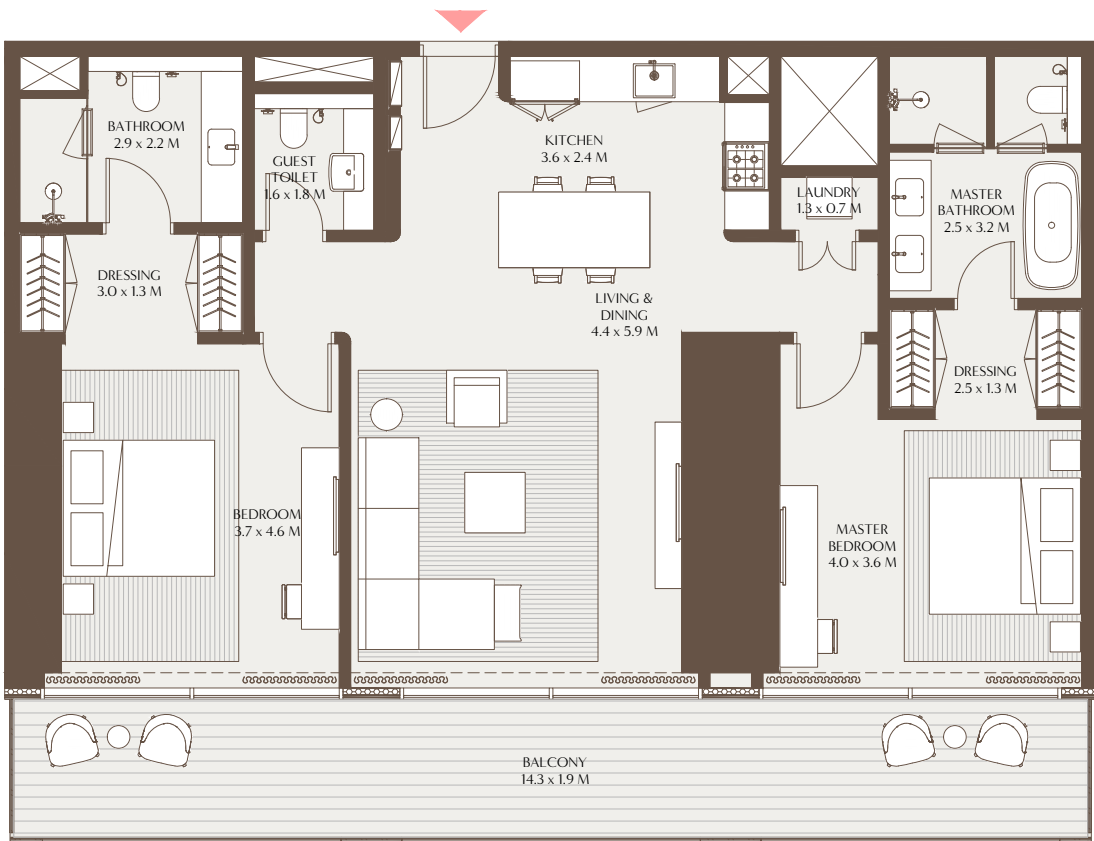
Designed to balance openness with privacy, The Elements two bedroom residence welcomes you with immediate views to the outdoors, drawing in natural light and a sense of calm. An open kitchen connects effortlessly to the living and dining spaces, while two en-suite bedrooms offer a quiet escape, each with built-in wardrobes, and the master featuring a walk-in dressing area and spa-style bathroom with a soaking tub. Expansive balconies extend the living space outward, with select layouts offering wraparound balconys and dual-aspect views. Additional features include a powder room, laundry area, and in select typologies, a discreet maid's room with en-suite facilities for added convenience.





The Elements - 2 Bedroom Residence A

Unit Area: 117.75 Sqm (1,267.48 Sqft) | Balcony Area: 26.88 Sqm (289.29 Sqft) | Total Area: 144.63 Sqm (1,556.77 Sqft)



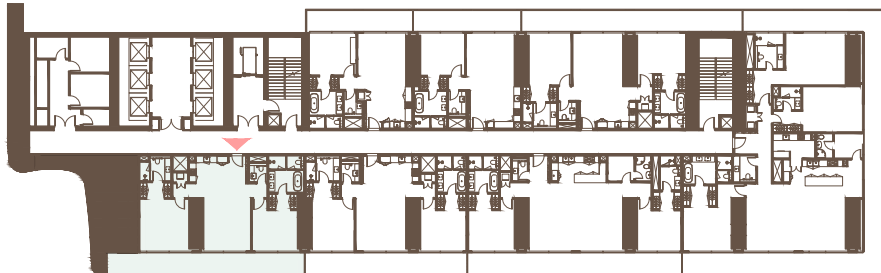
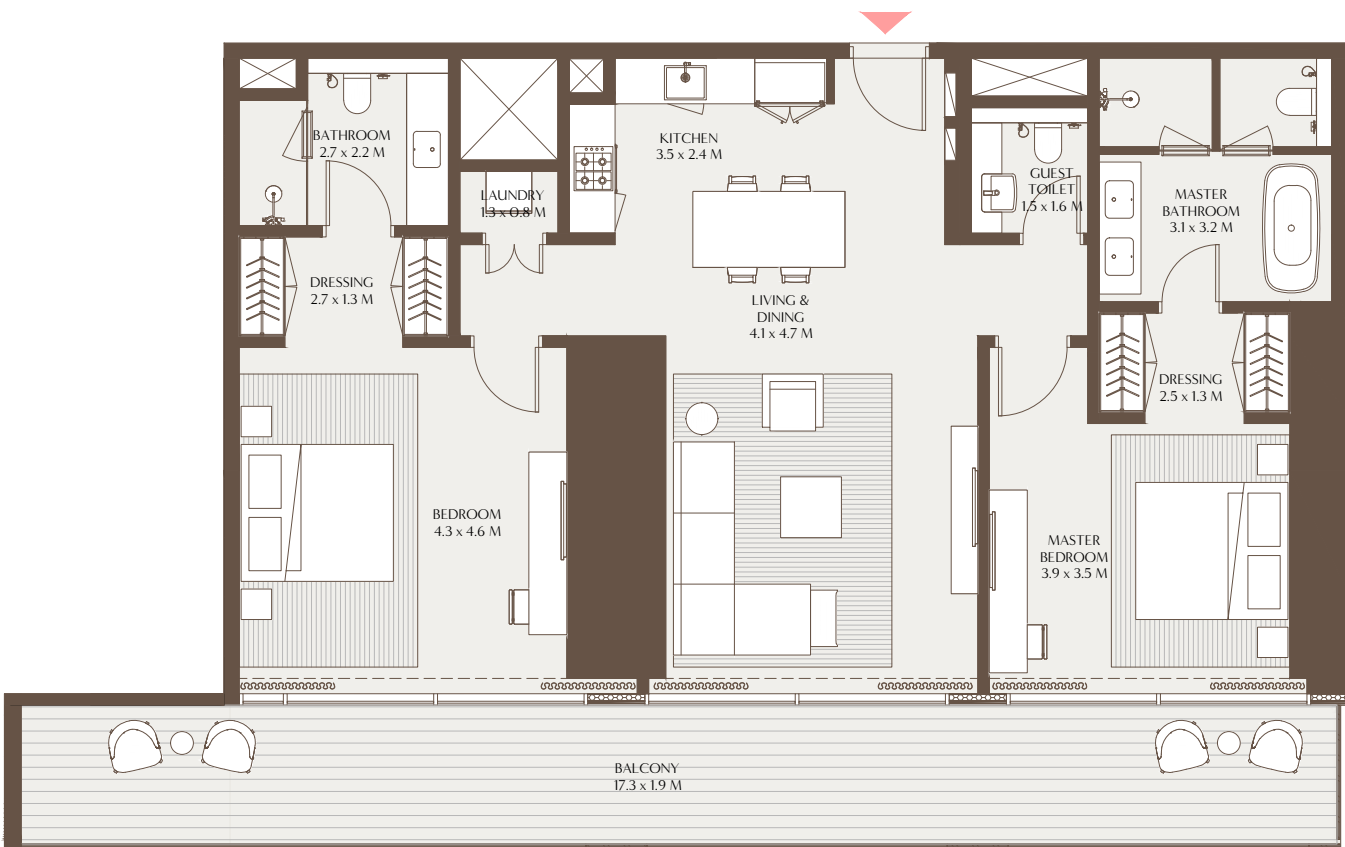
4TH TO 17TH & 19TH TO 29TH FLOOR



1-Measurements are indicative 'finish to finish' in Metric & Imperial excluding construction tolerance. 2-Plot/unit dimensions may vary from brochure, and unit types/plans may exist as mirrored versions; 3-All images used are for illustrative purposes only. 4-Unless stated otherwise, all fittings and interior decorative items shown are for illustrative purposes only. 5-The developer reserves the right to make alterations, at its absolute discretion, without any liability whatsoever up to the final 'as built' status.

The Elements - 2 Bedroom Residence B

Unit Area: 120.39 Sqm (1,295.88 Sqft) | Balcony Area: 32.90 Sqm (354.08 Sqft) | Total Area: 153.29 Sqm (1,649.96 Sqft)



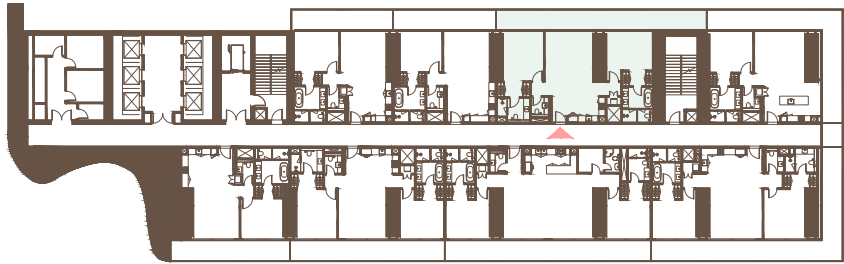
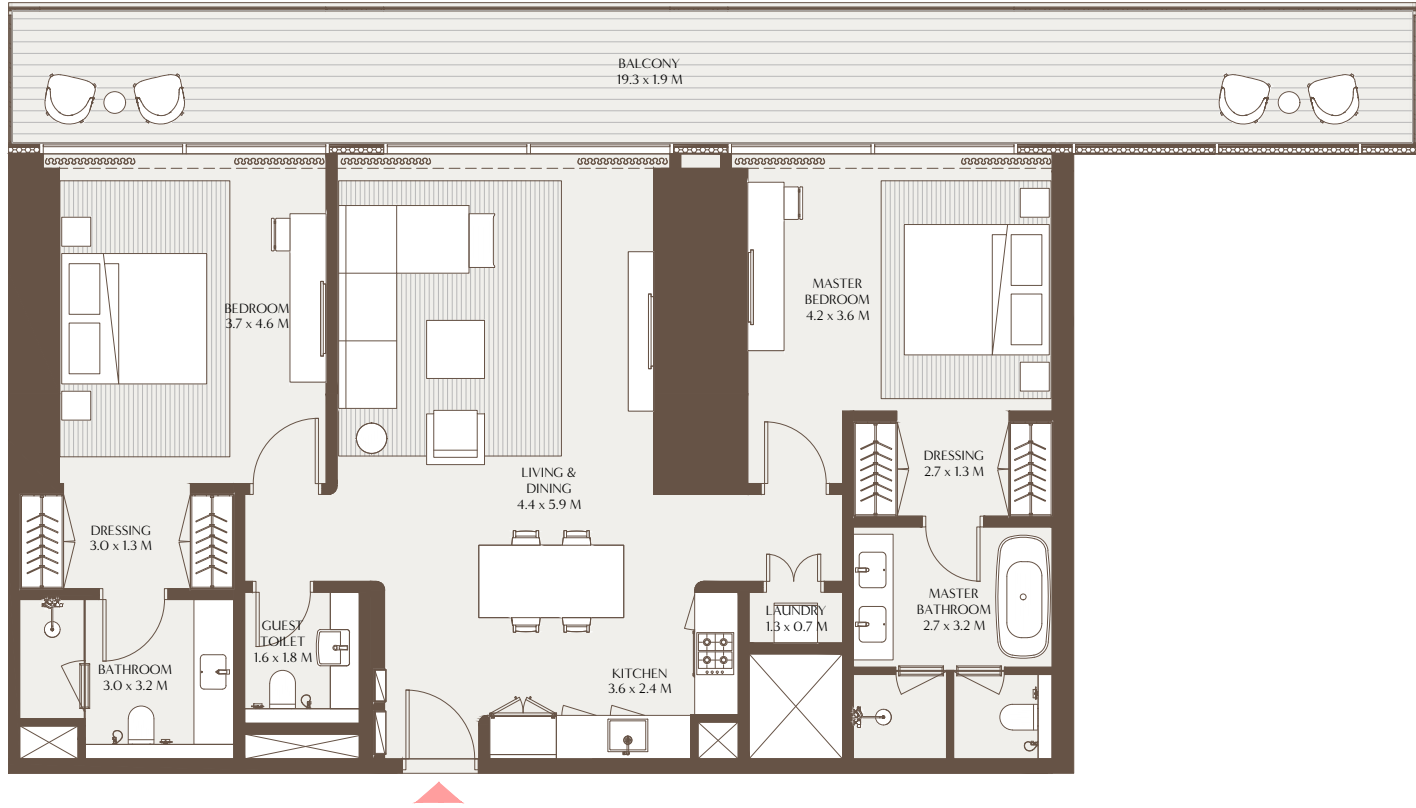
19TH TO 29TH FLOOR



1-Measurements are indicative 'finish to finish' in Metric & Imperial excluding construction tolerance. 2-Plot/unit dimensions may vary from brochure, and unit types/plans may exist as mirrored versions; 3-All images used are for illustrative purposes only. 4-Unless stated otherwise, all fittings and interior decorative items shown are for illustrative purposes only. 5-The developer reserves the right to make alterations, at its absolute discretion, without any liability whatsoever up to the final 'as built' status.

The Elements - 2 Bedroom Residence C

Unit Area: 123.69 Sqm (1,331.41 Sqft) | Balcony Area: 36.55 Sqm (393.39 Sqft) | Total Area: 160.24 Sqm (1,724.80 Sqft)

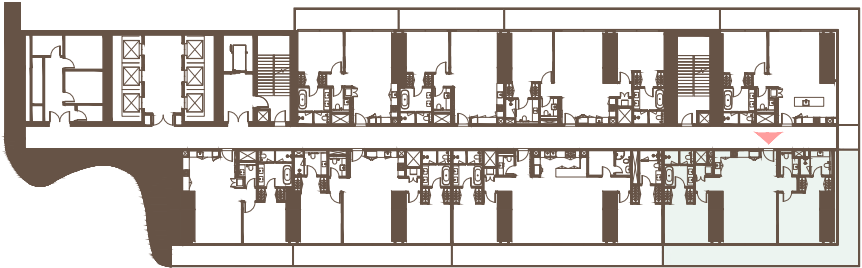
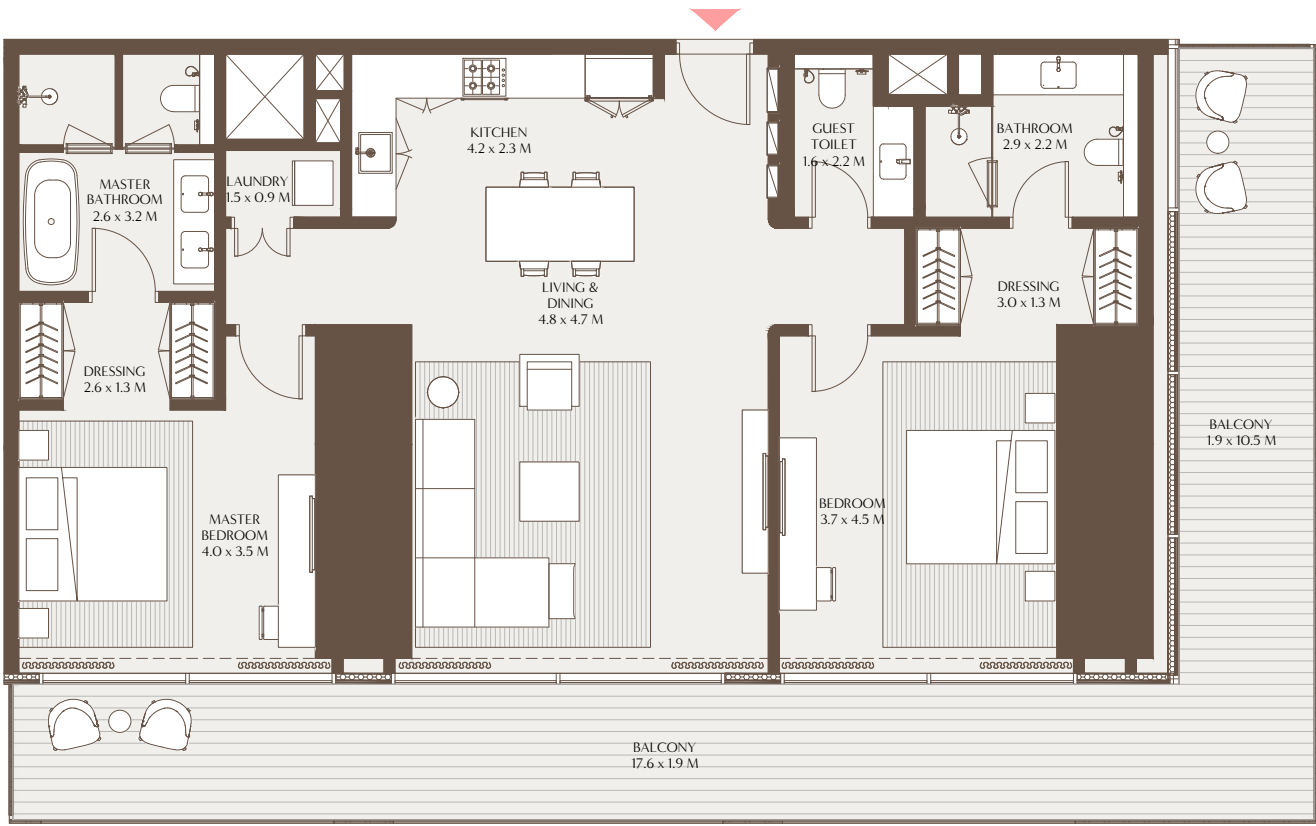


4TH TO 17TH, 19TH TO 29TH, 30TH TO 39TH,
41ST TO 47TH, 48TH TO 49TH FLOOR



The Elements - 2 Bedroom Residence D

Unit Area: 131.90 Sqm (1,419.73 Sqft) | Balcony Area: 49.33 Sqm (531.03 Sqft) | Total Area: 181.23 Sqm (1,950.76 Sqft)



4TH TO 17TH FLOOR

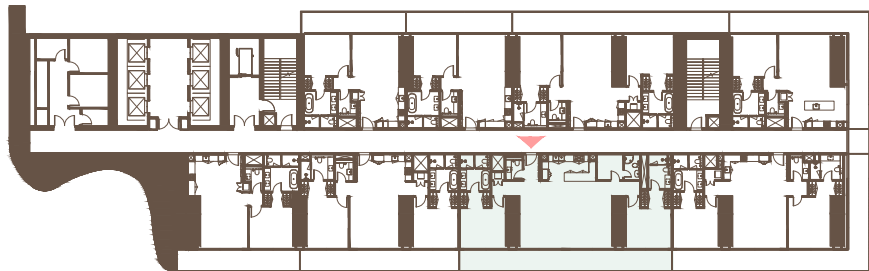
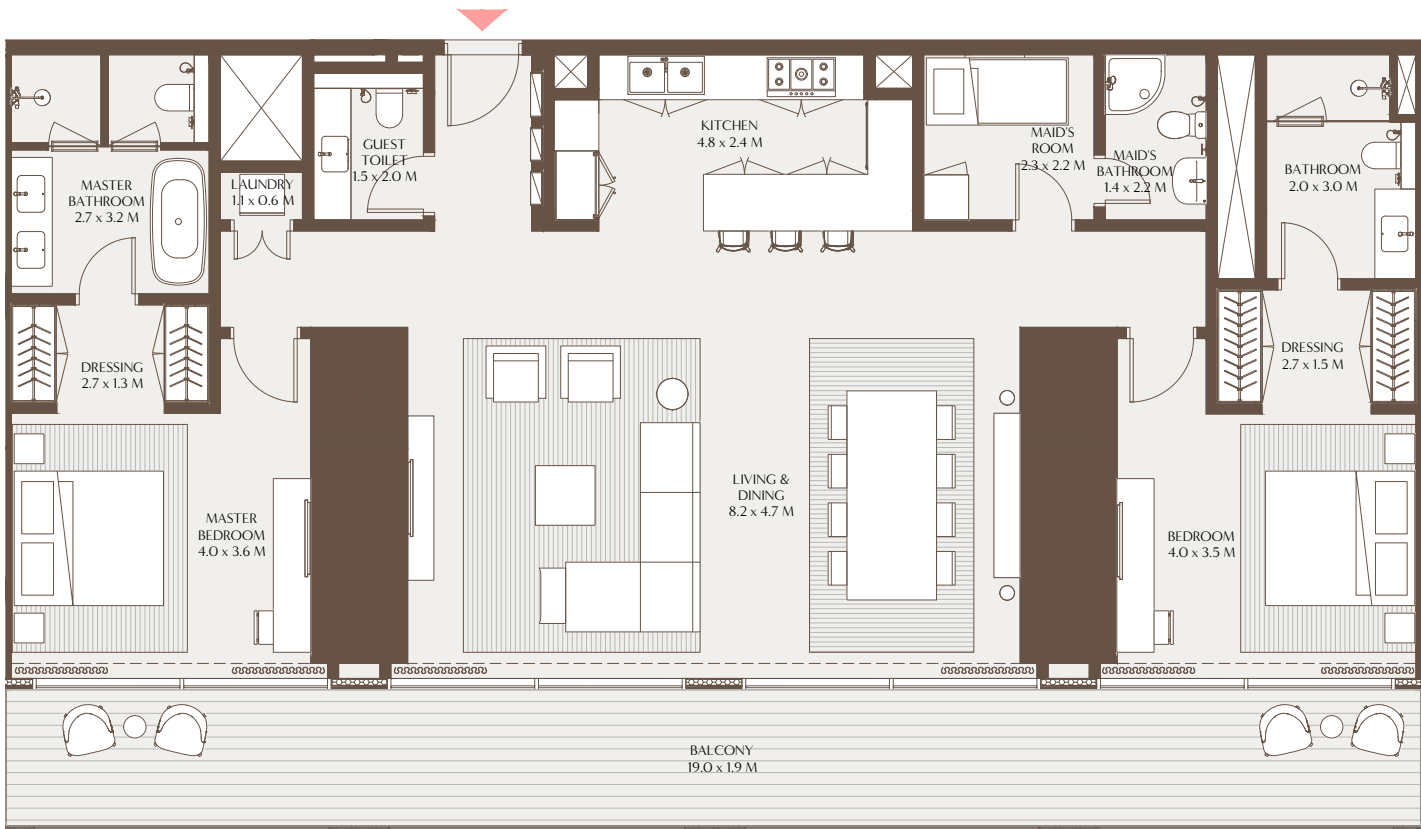


1-Measurements are indicative 'finish to finish' in Metric & Imperial excluding construction tolerance. 2-Plot/unit dimensions may vary from brochure, and unit types/plans may exist as mirrored versions; 3-All images used are for illustrative purposes only. 4-Unless stated otherwise, all fittings and interior decorative items shown are for illustrative purposes only. 5-The developer reserves the right to make alterations, at its absolute discretion, without any liability whatsoever up to the final 'as built' status.

1-Measurements are indicative 'finish to finish' in Metric & Imperial excluding construction tolerance. 2-Plot/unit dimensions may vary from brochure, and unit types/plans may exist as mirrored versions; 3-All images used are for illustrative purposes only. 4-Unless stated otherwise, all fittings and interior decorative items shown are for illustrative purposes only. 5-The developer reserves the right to make alterations, at its absolute discretion, without any liability whatsoever up to the final 'as built' status.

The Elements - 2 Bedroom Residence E

Unit Area: 157.08 Sqm (1,690.80 Sqft) | Balcony Area: 35.83 Sqm (385.67 Sqft) | Total Area: 192.91 Sqm (2,076.47 Sqft)

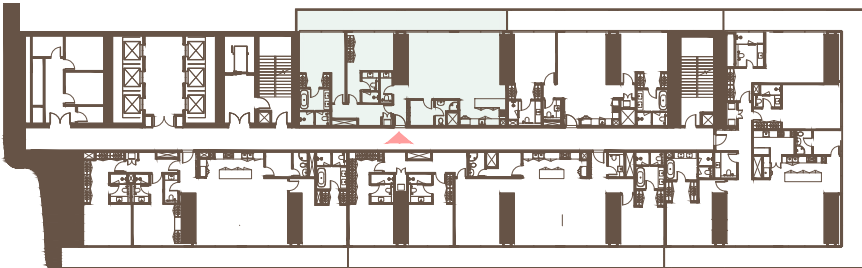
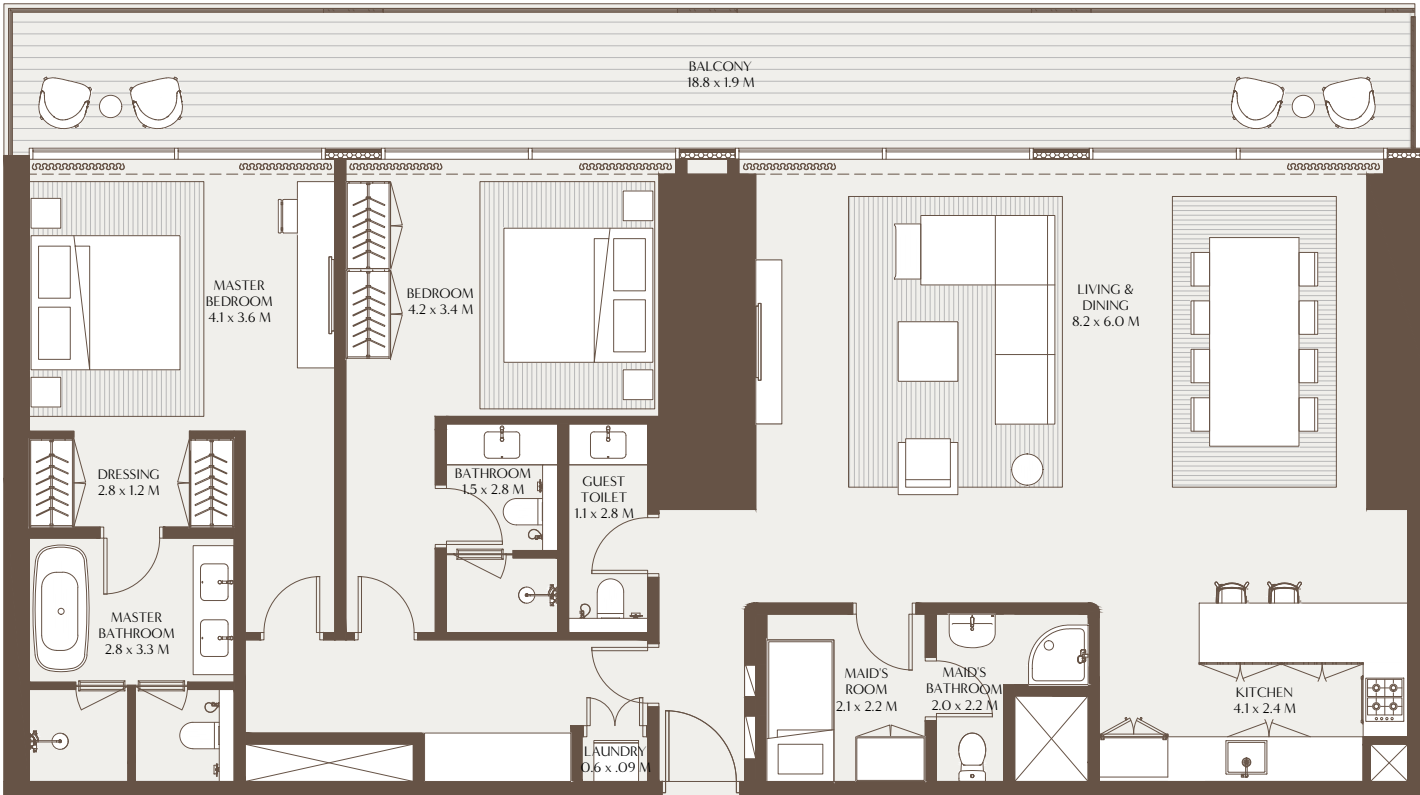


4TH TO 17TH, 19TH TO 29TH FLOOR



The Elements - 2 Bedroom Residence F

Unit Area: 158.52 Sqm (1,706.31 Sqft) | Balcony Area: 35.74 Sqm (384.73 Sqft) | Total Area: 194.26 Sqm (2,091.04 Sqft)



30TH TO 39TH, 41ST TO 47TH, 48TH TO 49TH FLOOR



1-Measurements are indicative 'finish to finish' in Metric & Imperial excluding construction tolerance. 2-Plot/unit dimensions may vary from brochure, and unit types/plans may exist as mirrored versions; 3-All images used are for illustrative purposes only. 4-Unless stated otherwise, all fittings and interior decorative items shown are for illustrative purposes only. 5-The developer reserves the right to make alterations, at its absolute discretion, without any liability whatsoever up to the final 'as built' status.

1-Measurements are indicative 'finish to finish' in Metric & Imperial excluding construction tolerance. 2-Plot/unit dimensions may vary from brochure, and unit types/plans may exist as mirrored versions; 3-All images used are for illustrative purposes only. 4-Unless stated otherwise, all fittings and interior decorative items shown are for illustrative purposes only. 5-The developer reserves the right to make alterations, at its absolute discretion, without any liability whatsoever up to the final 'as built' status.

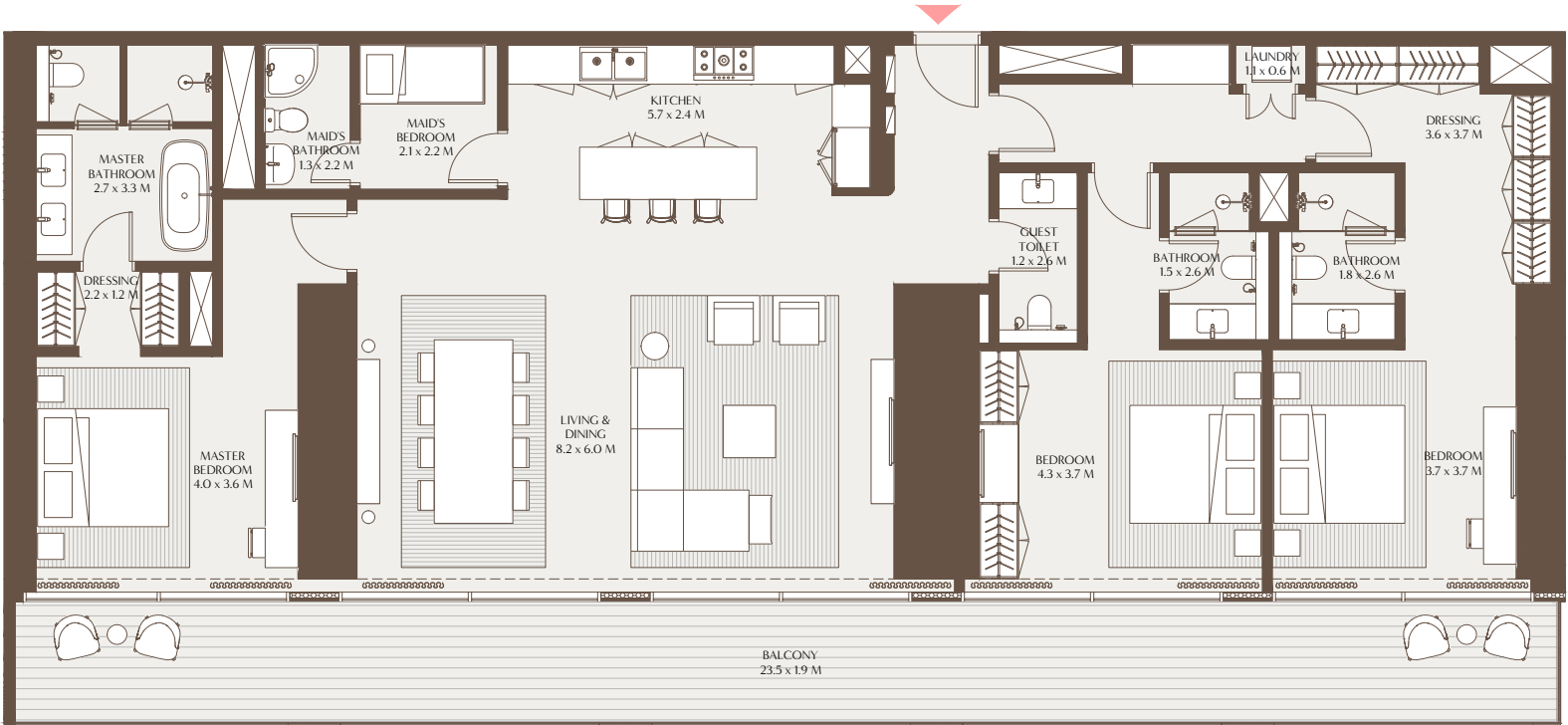


The Elements - 3 Bedroom Residence A

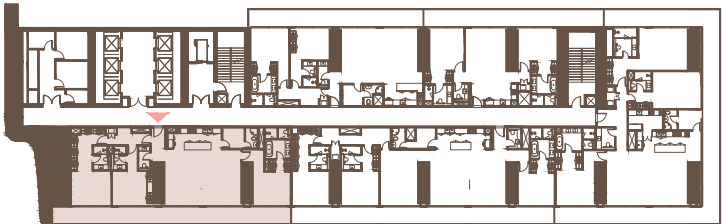
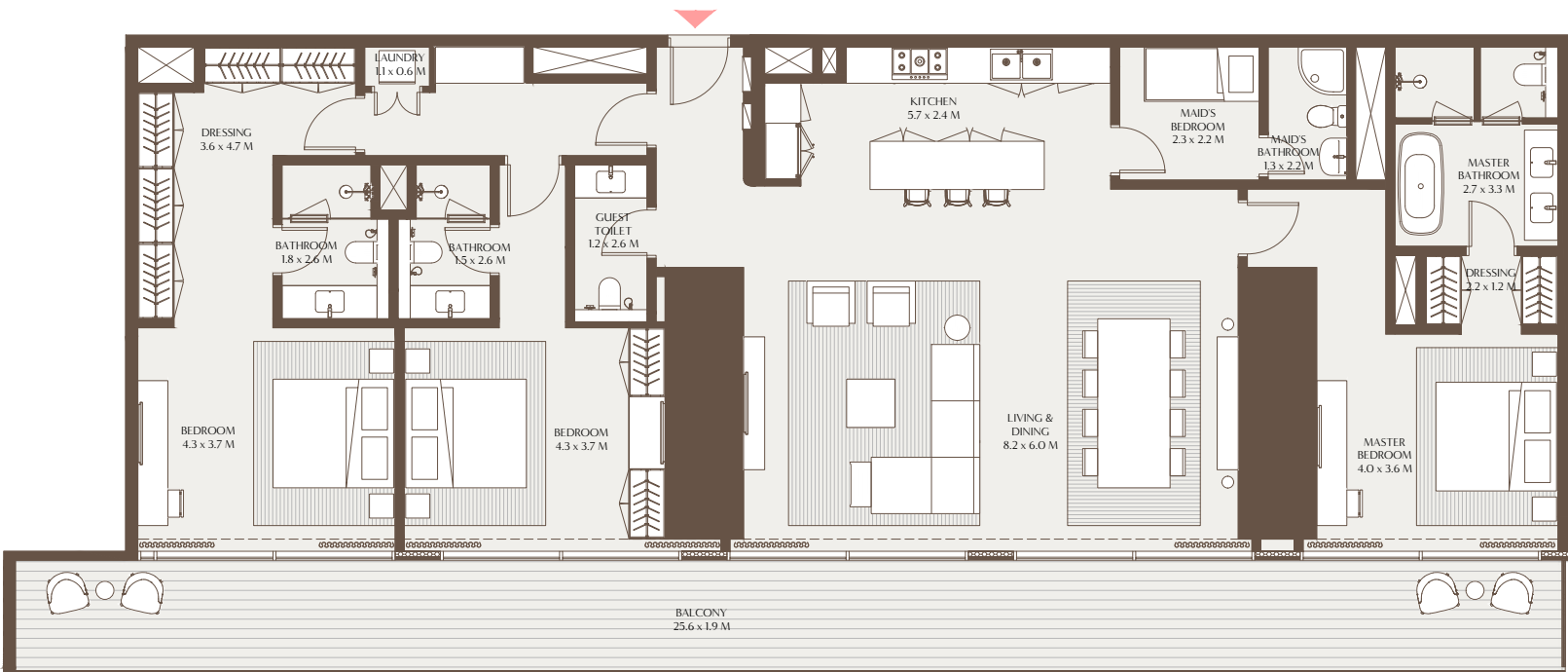
Unit Area: 195.48 Sqm (2,104.09 Sqft) | Balcony Area: 44.84 Sqm (482.62 Sqft) | Total Area: 240.31 Sqm (2,586.71 Sqft)

The Elements - 3 Bedroom Residence B

Unit Area: 197.28 Sqm (2,123.55 Sqft) | Balcony Area: 48.63 Sqm (523.45 Sqft) | Total Area: 245.91 Sqm (2,647.00 Sqft)



41ST TO 47TH FLOOR



30TH TO 39TH, 41ST TO 47TH FLOOR

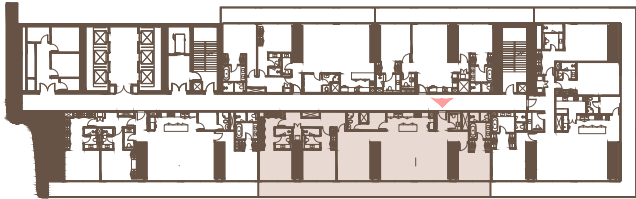
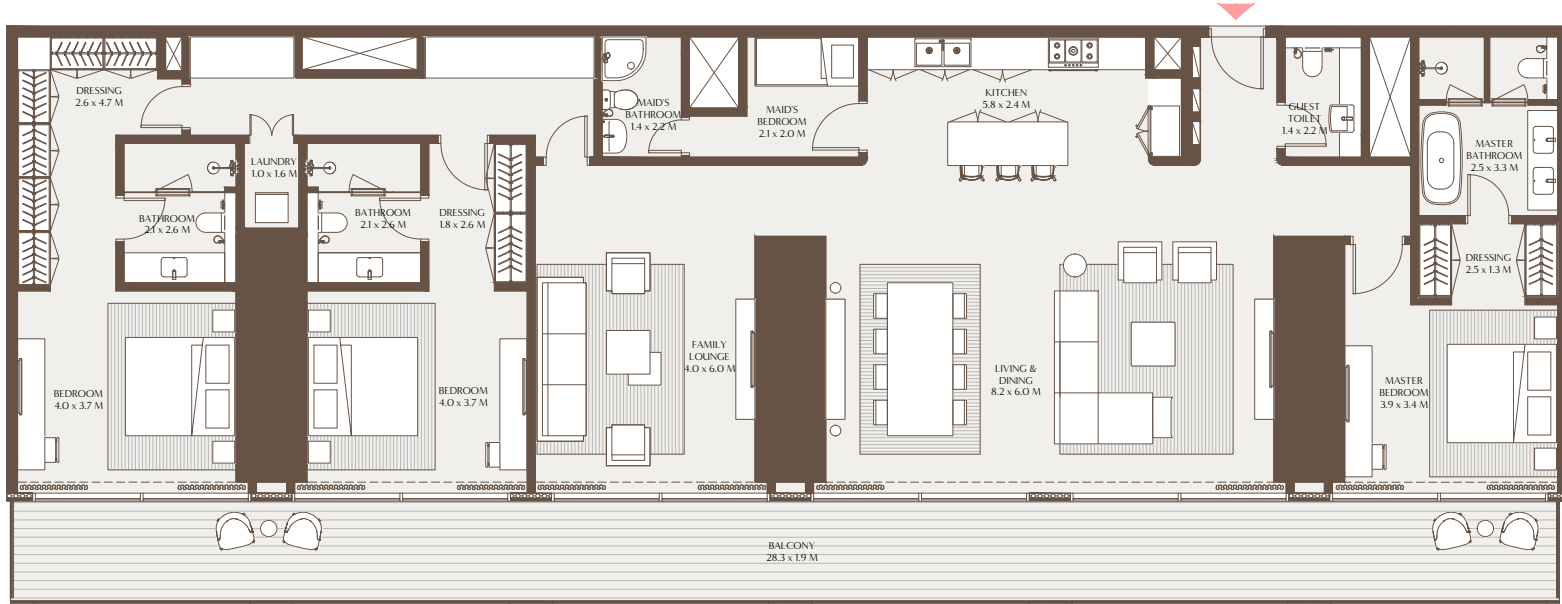


1-Measurements are indicative 'finish to finish' in Metric & Imperial excluding construction tolerance. 2-Plot/unit dimensions may vary from brochure, and unit types/plans may exist as mirrored versions; 3-All images used are for illustrative purposes only. 4-Unless stated otherwise, all fittings and interior decorative items shown are for illustrative purposes only. 5-The developer reserves the right to make alterations, at its absolute discretion, without any liability whatsoever up to the final 'as built' status.

1-Measurements are indicative 'finish to finish' in Metric & Imperial excluding construction tolerance. 2-Plot/unit dimensions may vary from brochure, and unit types/plans may exist as mirrored versions; 3-All images used are for illustrative purposes only. 4-Unless stated otherwise, all fittings and interior decorative items shown are for illustrative purposes only. 5-The developer reserves the right to make alterations, at its absolute discretion, without any liability whatsoever up to the final 'as built' status.

The Elements - 3 Bedroom Residence C

Unit Area: 236.85 Sqm (2,549.44 Sqft) | Balcony Area: 53.58 Sqm (576.70 Sqft) | Total Area: 290.43 Sqm (3,126.14 Sqft)

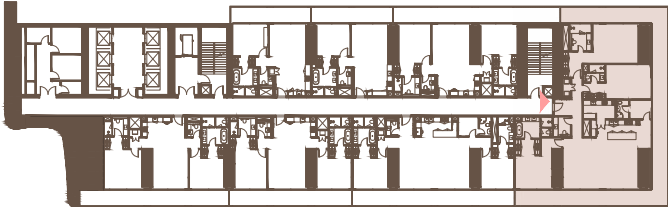
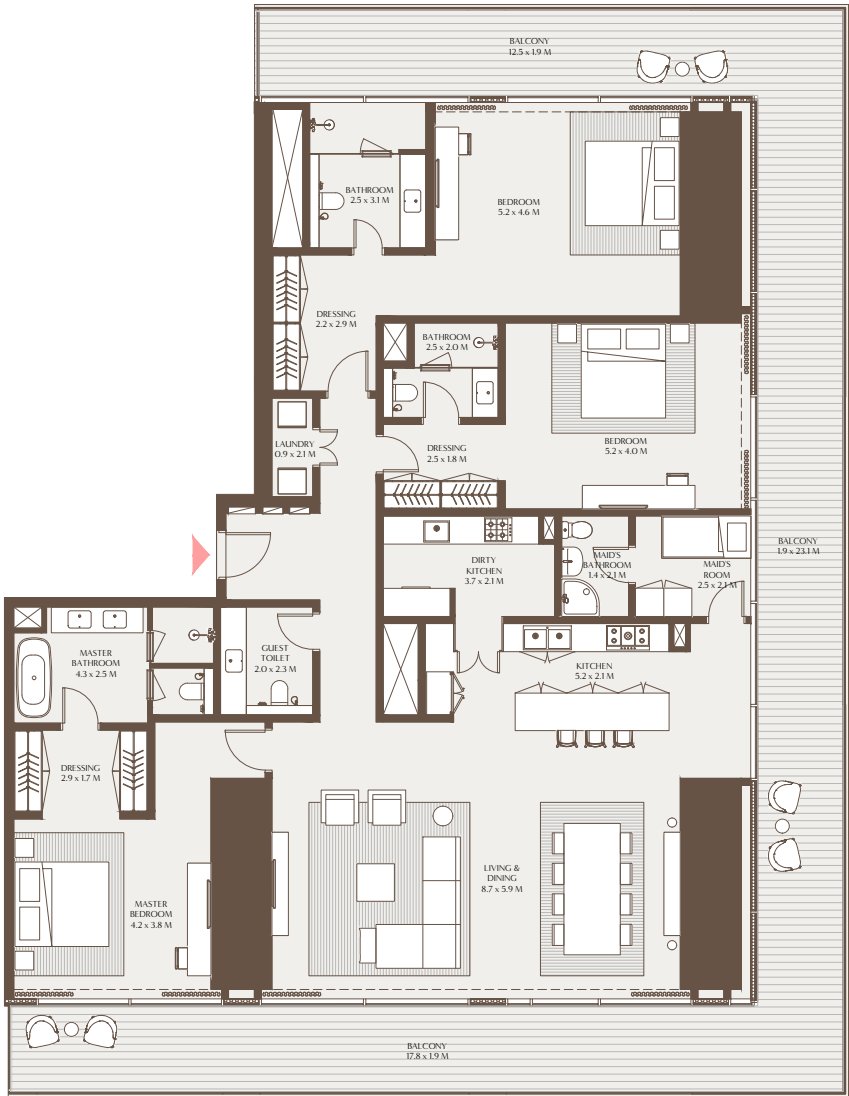


30TH TO 39TH FLOOR



The Elements - 3 Bedroom Residence D

Unit Area: 246.99 Sqm (2,658.59 Sqft) | Balcony Area: 93.49 Sqm (1,006.33 Sqft) | Total Area: 340.48 Sqm (3,664.92 Sqft)



19TH TO 29TH, 30TH TO 39TH FLOOR



1-Measurements are indicative 'finish to finish' in Metric & Imperial excluding construction tolerance. 2-Plot/unit dimensions may vary from brochure, and unit types/plans may exist as mirrored versions; 3-All images used are for illustrative purposes only. 4-Unless stated otherwise, all fittings and interior decorative items shown are for illustrative purposes only. 5-The developer reserves the right to make alterations, at its absolute discretion, without any liability whatsoever up to the final 'as built' status.

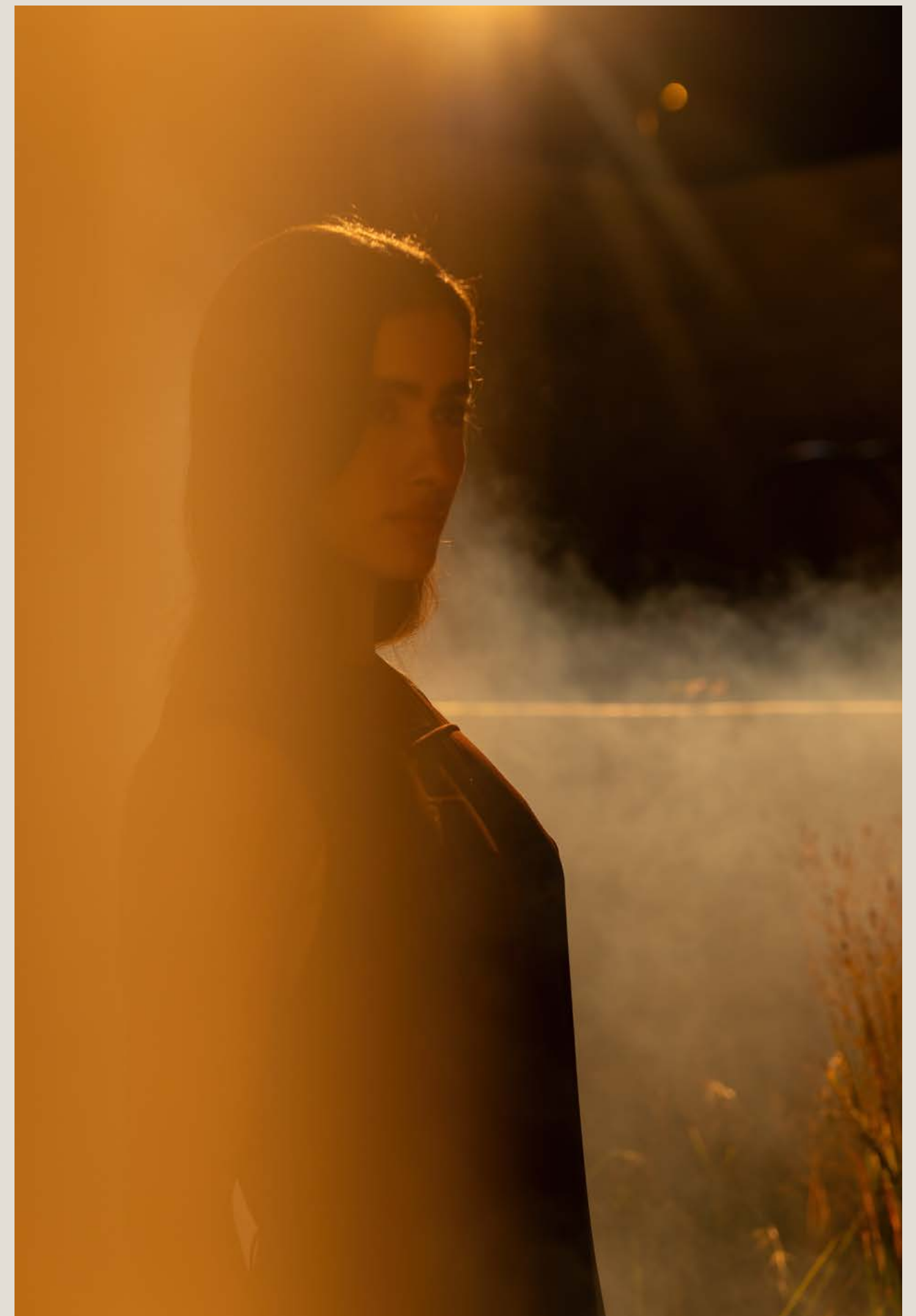
1-Measurements are indicative 'finish to finish' in Metric & Imperial excluding construction tolerance. 2-Plot/unit dimensions may vary from brochure, and unit types/plans may exist as mirrored versions; 3-All images used are for illustrative purposes only. 4-Unless stated otherwise, all fittings and interior decorative items shown are for illustrative purposes only. 5-The developer reserves the right to make alterations, at its absolute discretion, without any liability whatsoever up to the final 'as built' status.



THE COLLECTIONS 4 BEDROOM RESIDENCE

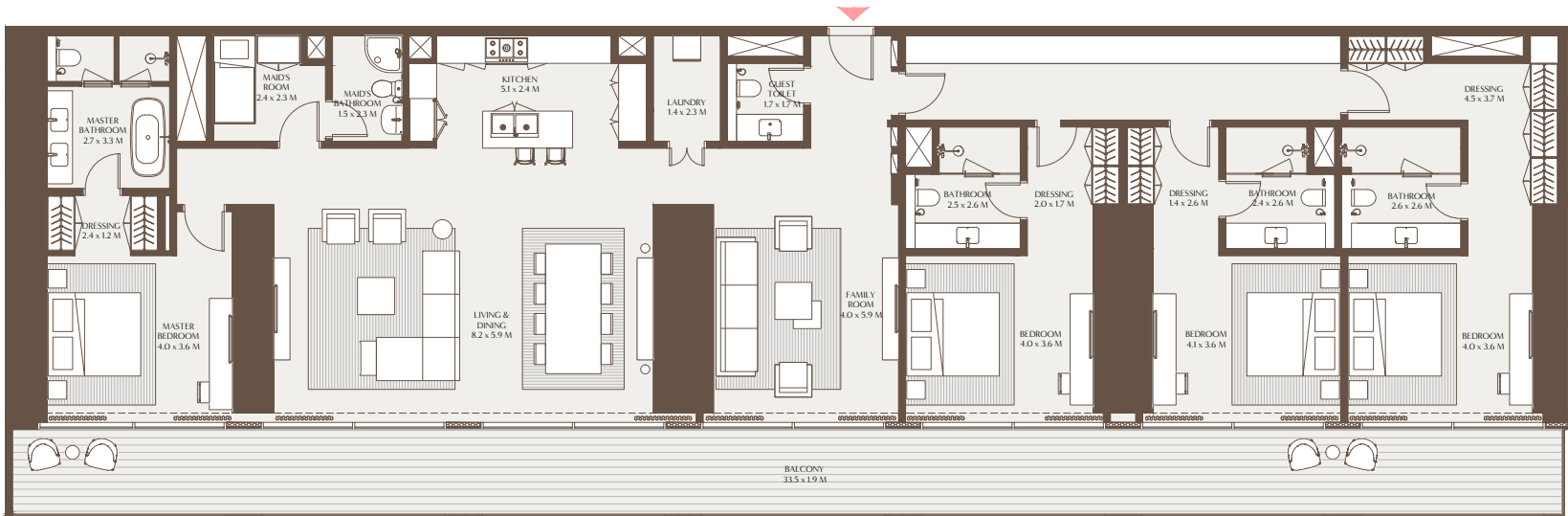
Designed for expansive living, The Collections four-bedroom residence offers a layered sense of space with a formal dining area, open-plan living room, and a separate family lounge all with uninterrupted views through floor-to-ceiling glass. Each of the four bedrooms is en-suite with built-in cabinetry, while the master suite includes a walk-in wardrobe and a spa-like bathroom complete with a soaking tub. Balconies extend across the residence, accessed from both bedrooms and living areas, with select corner units offering wraparound balconys and sweeping views in three directions.

A powder room, maid's quarters with en-suite, laundry area, and an open kitchen with island, alongside a discrete dirty kitchen in select layouts, complete the home's thoughtful functionality.



The Collections - 4 Bedroom Residence A

Unit Area: 275.43 Sqm (2,964.66 Sqft) | Balcony Area: 63.48 Sqm (683.28 Sqft) | Total Area: 338.91 Sqm (3,647.94 Sqft)



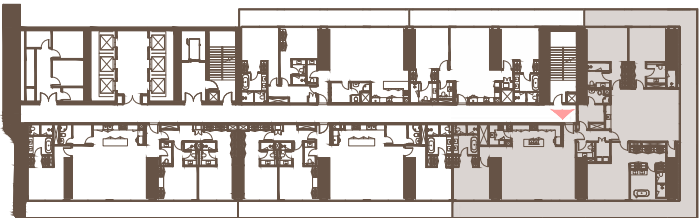
48TH TO 49TH FLOOR



1-Measurements are indicative 'finish to finish' in Metric & Imperial excluding construction tolerance. 2-Plot/unit dimensions may vary from brochure, and unit types/plans may exist as mirrored versions; 3-All images used are for illustrative purposes only. 4-Unless stated otherwise, all fittings and interior decorative items shown are for illustrative purposes only. 5-The developer reserves the right to make alterations, at its absolute discretion, without any liability whatsoever up to the final 'as built' status.

The Collections - 4 Bedroom Residence B

Unit Area: 325.38 Sqm (3,502.35 Sqft) | Balcony Area: 111.06 Sqm (1,195.45 Sqft) | Total Area: 436.44 Sqm (4,697.80 Sqft)



41ST TO 47TH FLOOR



1-Measurements are indicative 'finish to finish' in Metric & Imperial excluding construction tolerance. 2-Plot/unit dimensions may vary from brochure, and unit types/plans may exist as mirrored versions; 3-All images used are for illustrative purposes only. 4-Unless stated otherwise, all fittings and interior decorative items shown are for illustrative purposes only. 5-The developer reserves the right to make alterations, at its absolute discretion, without any liability whatsoever up to the final 'as built' status.



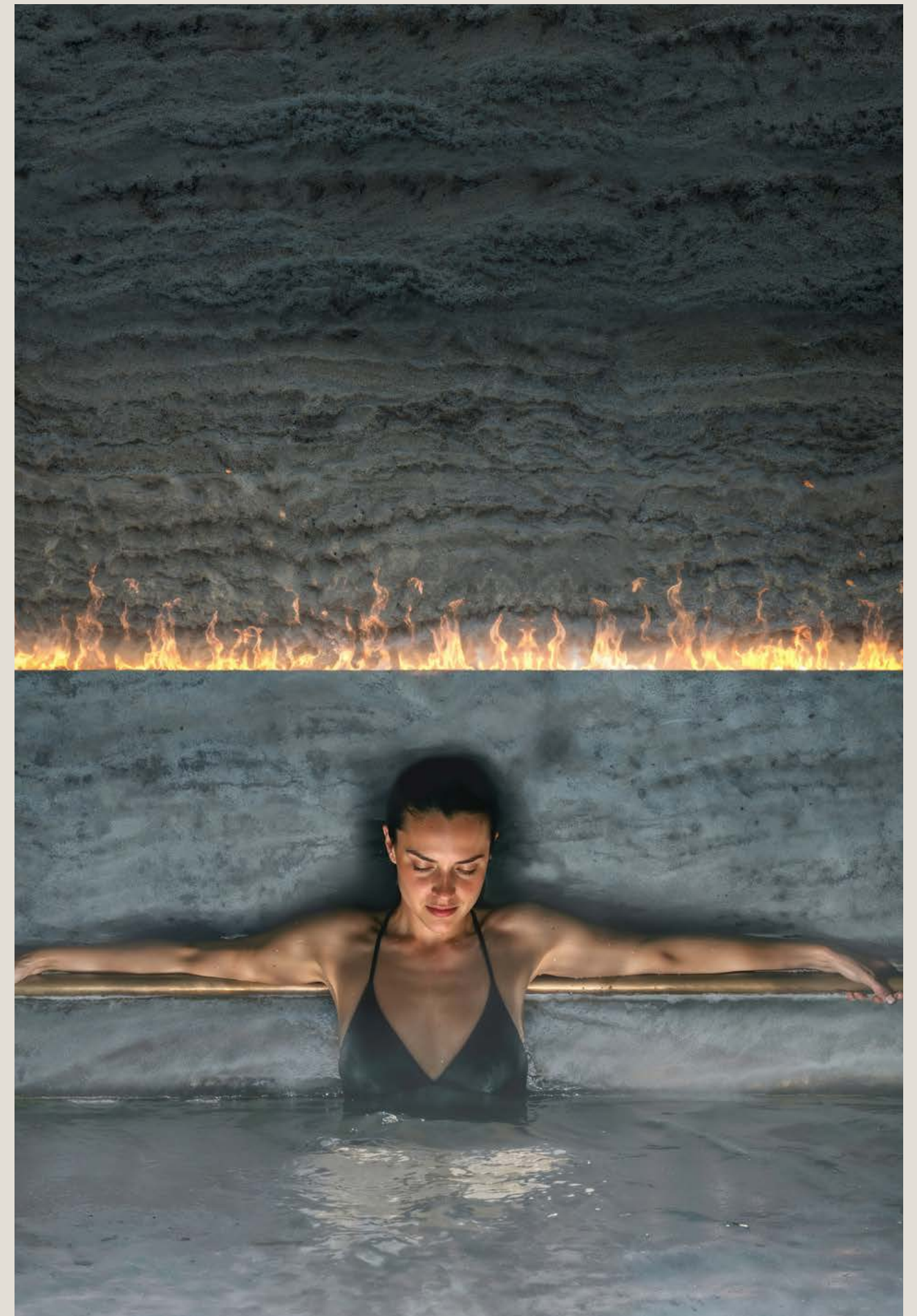
THE GRAVITY HOUSE 5 BEDROOM RESIDENCE

The Gravity House five-bedroom residence is a showcase of expansive, elevated living, offering generous living and dining areas, a separate family lounge, and seamless views in three directions through a full wraparound balcony. Each bedroom is en-suite, with the master suite featuring a spa-inspired bathroom, complete with a soaking tub, rain shower, and 'his and hers' walk-in wardrobes.

Designed for both functionality and luxury, the residence also includes an open kitchen with an island, a discrete dirty kitchen, maid's quarters with en-suite, powder room, and dedicated storage.

Every detail has been considered to support both everyday ease and exceptional entertaining.





The Gravity House - 5 Bedroom Residence A

Unit Area: 443.33 Sqm (4,771.95 Sqft) | Balcony Area: 137.93 Sqm (1,484.64 Sqft) | Total Area: 581.26 Sqm (6,256.59 Sqft)



1-Measurements are indicative 'finish to finish' in Metric & Imperial excluding construction tolerance. 2-Plot/unit dimensions may vary from brochure, and unit types/plans may exist as mirrored versions; 3-All images used are for illustrative purposes only. 4-Unless stated otherwise, all fittings and interior decorative items shown are for illustrative purposes only. 5-The developer reserves the right to make alterations, at its absolute discretion, without any liability whatsoever up to the final 'as built' status.





THE SKY TERRACE 6 BEDROOM PENTHOUSE

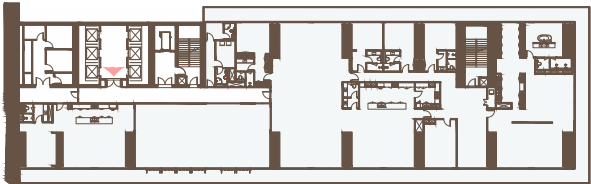
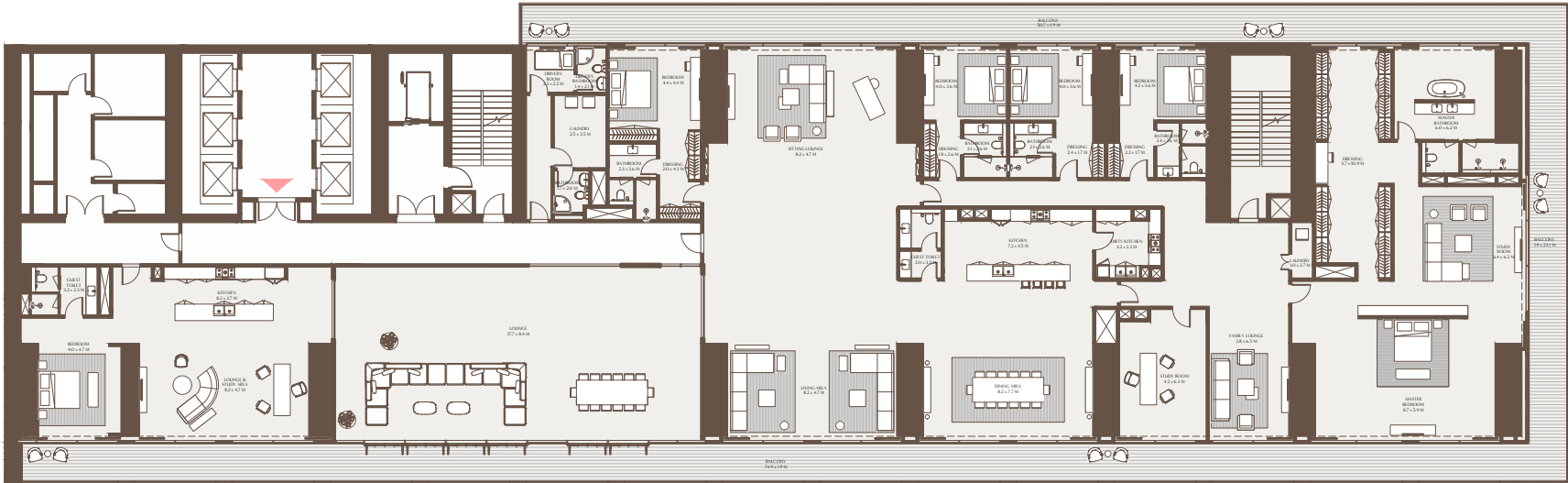
The Sky Terrace Penthouse 6 bedroom is a statement of refined grandeur, designed for those who seek space, privacy, and an uninterrupted connection to the city skyline.

Overlooking the Burj Khalifa, this expansive residence features flowing living and dining spaces, a family lounge, and an innovative open and light-filled space that blends indoor and outdoor living through seamless transitions. Four of the bedrooms are luxurious master suites, each with its own en-suite bathroom, while the primary master suite includes a 'his and hers' walk-in closet and spa-style bathroom with both shower and bathtub.

A sixth bedroom is part of a self-contained guest suite, complete with lounge, kitchenette, study area, and private bathroom.

The Sky Terrace - 6 Bedroom Penthouse A

Unit Area: 1,084.97 Sqm (11,678.52 Sqft) | Balcony Area: 274.05 Sqm (2,949.88 Sqft) | Total Area: 1,359.02 Sqm (14,628.40 Sqft)



50TH FLOOR



1-Measurements are indicative 'finish to finish' in Metric & Imperial excluding construction tolerance. 2-Plot/unit dimensions may vary from brochure, and unit types/plans may exist as mirrored versions; 3-All images used are for illustrative purposes only. 4-Unless stated otherwise, all fittings and interior decorative items shown are for illustrative purposes only. 5-The developer reserves the right to make alterations, at its absolute discretion, without any liability whatsoever up to the final 'as built' status.





THE OBSERVATORY 6 BEDROOM PRESIDENTIAL SUITE

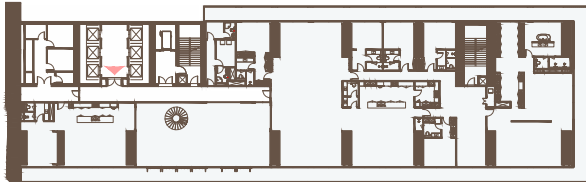
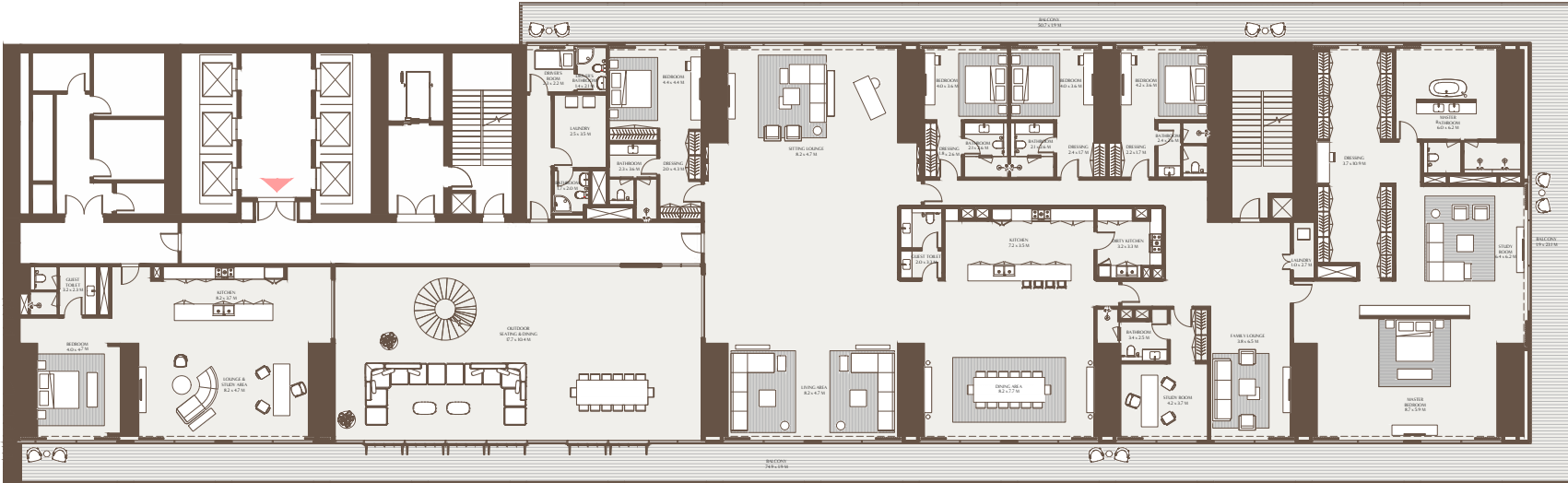
Floating above the city's rhythm, The Observatory is Akala's most iconic residence. A two-storey sanctuary with dual-aspect views toward both Downtown Dubai and DIFC, it embodies a rare architectural synergy between movement and stillness, spectacle and sanctuary. The arrival sequence is intentionally cinematic, beginning at a private lift lobby and unfolding through framed glimpses of skyline vistas, sculptural staircases, and natural light that leads to The Grand Room, a magnificent space where sitting, dining, and living areas converge against a backdrop of dramatic, panoramic views.

Thoughtfully zoned into public and private wings, the residence includes multiple lounge areas, a courtyard framed by folding glass panels, and a light-filled transitional lounge space that serves as a multifunctional family or guest suite. The master bedroom is a sanctuary in its own right, with sweeping three-sided views and deeply personal design details that prioritize peace and introspection.

Above, the rooftop terrace offers a private pool and jacuzzi, art gallery, summer greenhouse, and elevated entertaining zones, all overlooking the Burj Khalifa. As much an architectural landmark as it is a residence, The Observatory allows its residents to experience Dubai from a truly exceptional point of view.

The Observatory - 6 Bedroom Presidential Suite

Unit Area: 928.20 Sqm (9,991.10 Sqft) | Balcony + Roof Terrace: 1,271.06 Sqm (13,681.62 Sqft) | Total Area: 2,199.27 Sqm (23,672.72 Sqft)

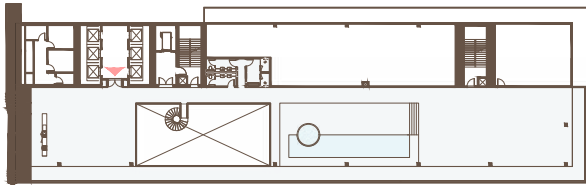
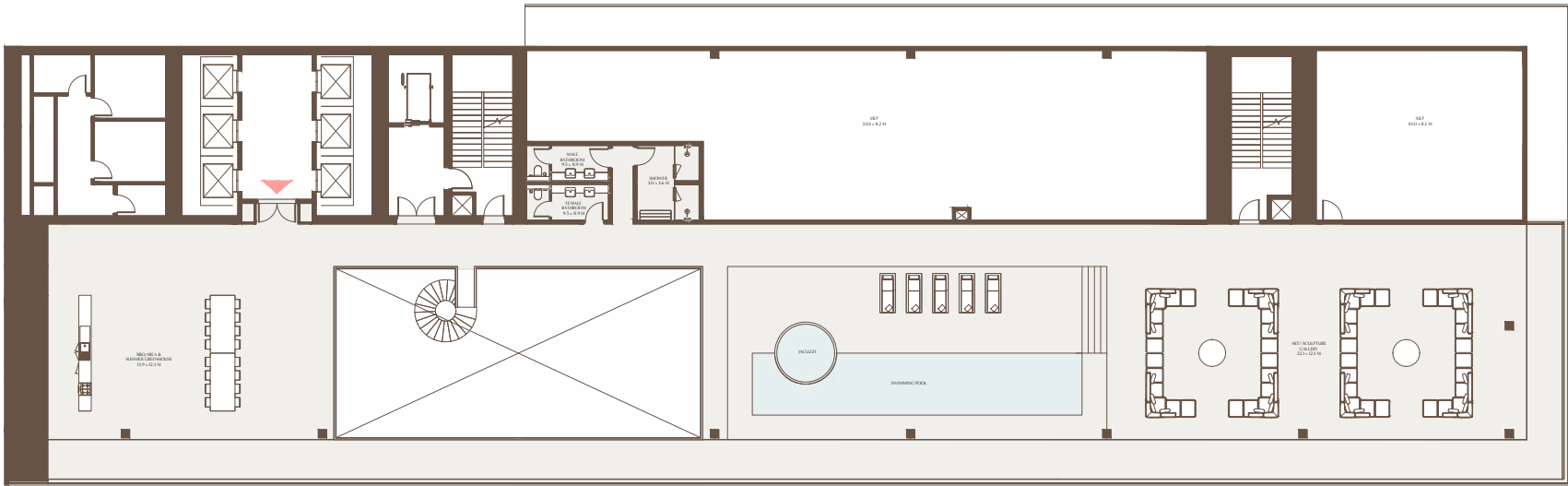


51ST FLOOR



1-Measurements are indicative 'finish to finish' in Metric & Imperial excluding construction tolerance. 2-Plot/unit dimensions may vary from brochure, and unit types/plans may exist as mirrored versions; 3-All images used are for illustrative purposes only. 4-Unless stated otherwise, all fittings and interior decorative items shown are for illustrative purposes only. 5-The developer reserves the right to make alterations, at its absolute discretion, without any liability whatsoever up to the final 'as built' status.

The Observatory - 6 Bedroom Presidential Suite Roof Terrace



ROOF FLOOR



1-Measurements are indicative 'finish to finish' in Metric & Imperial excluding construction tolerance. 2-Plot/unit dimensions may vary from brochure, and unit types/plans may exist as mirrored versions; 3-All images used are for illustrative purposes only. 4-Unless stated otherwise, all fittings and interior decorative items shown are for illustrative purposes only. 5-The developer reserves the right to make alterations, at its absolute discretion, without any liability whatsoever up to the final 'as built' status.

