



O T E N

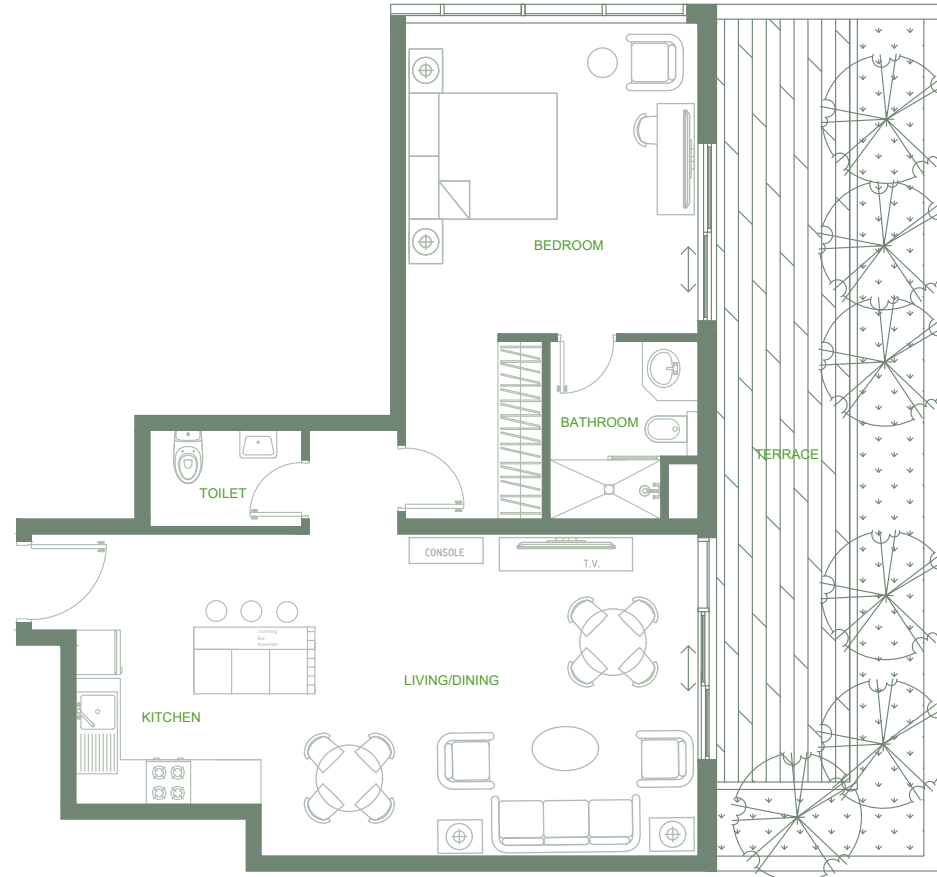
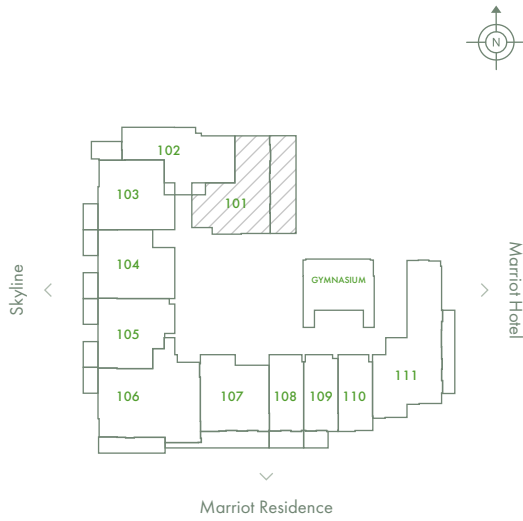
Floor Plan

1st *Floor*

O Ten Floor Plan 1st floor

◆ *Series 01*

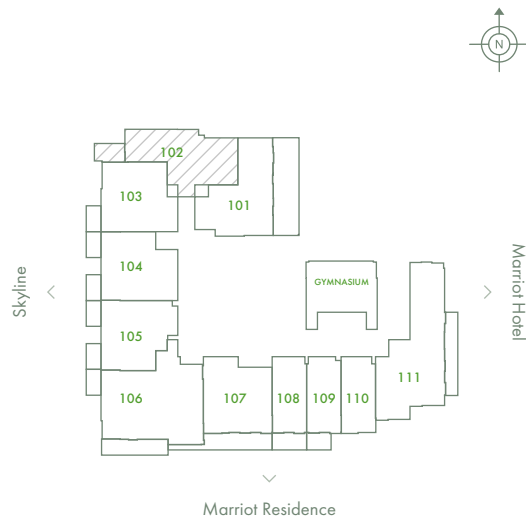
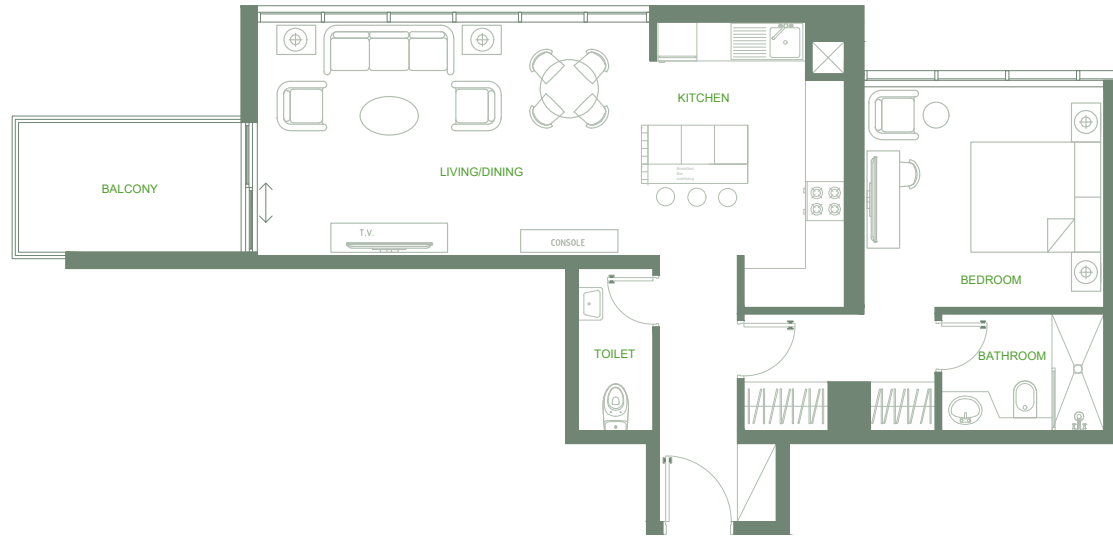
1 Bedroom
Total Area: 1,174 sq.ft.
Pool View



O Ten Floor Plan 1st floor

♦ *Series 02*

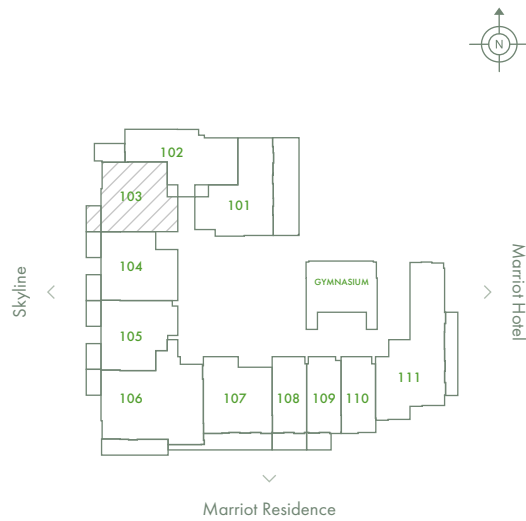
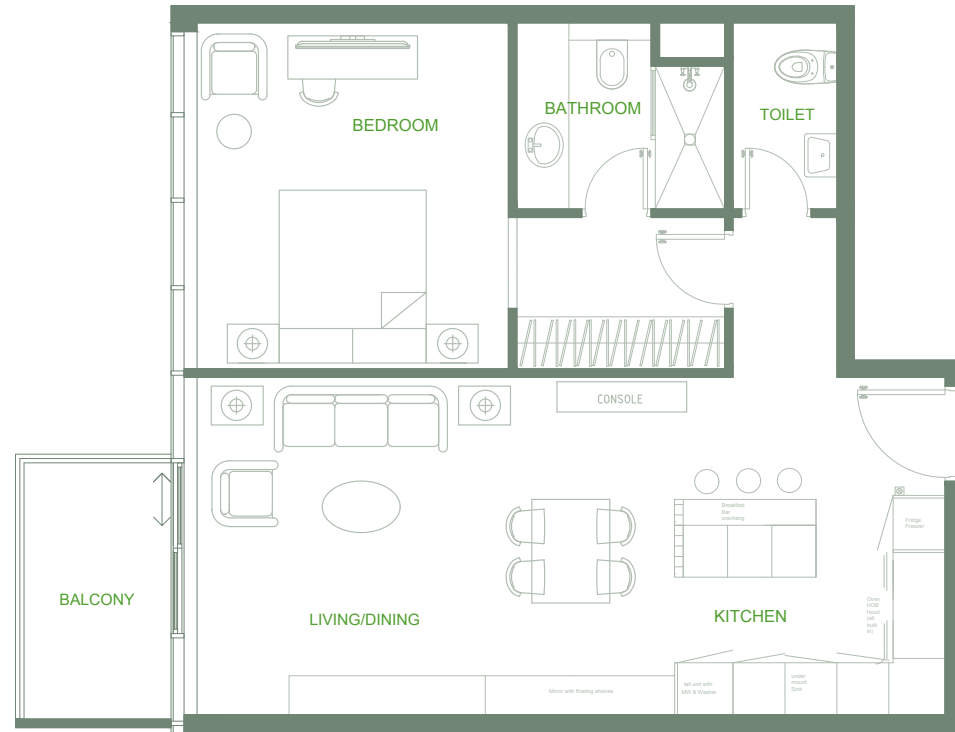
1 Bedroom
Total Area: 856 sq.ft.
Skyline View



O Ten Floor Plan 1st floor

◆ Series 03

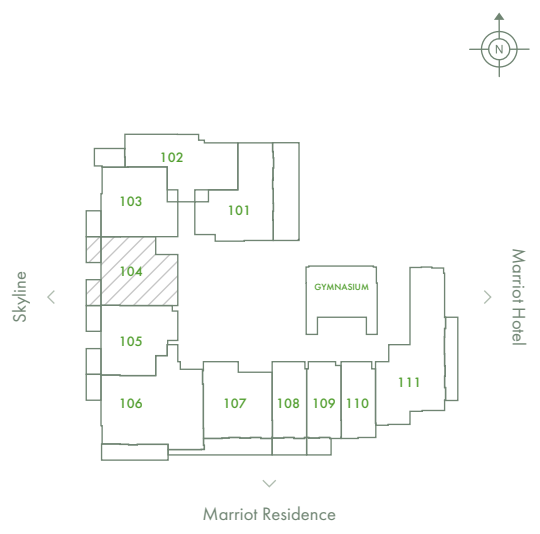
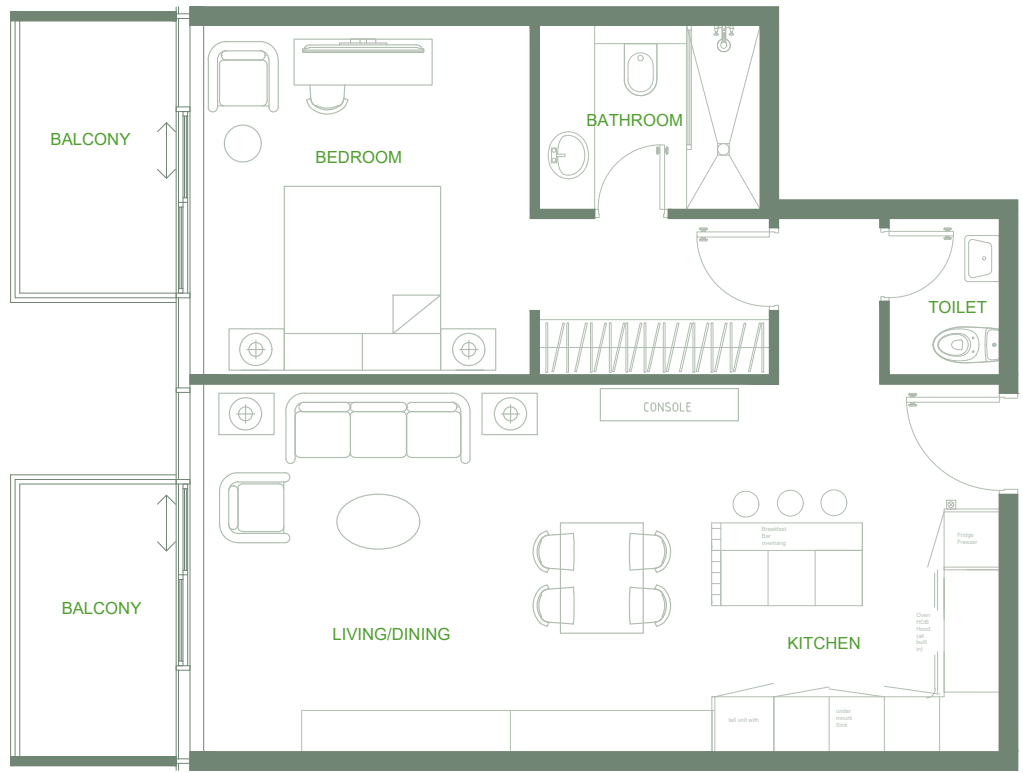
1 Bedroom
Total Area: 794 sq.ft.
Skyline View



O Ten Floor Plan 1st floor

◆ Series 04

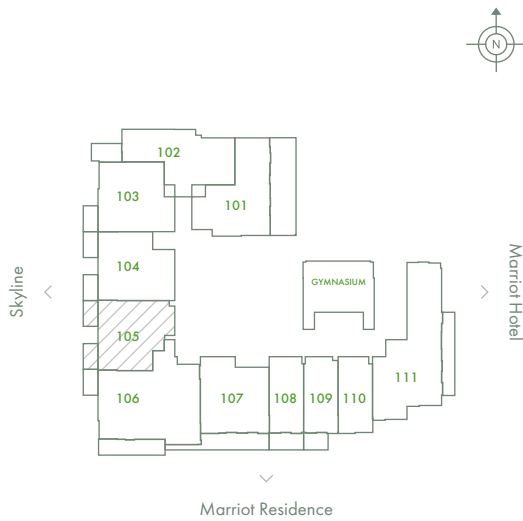
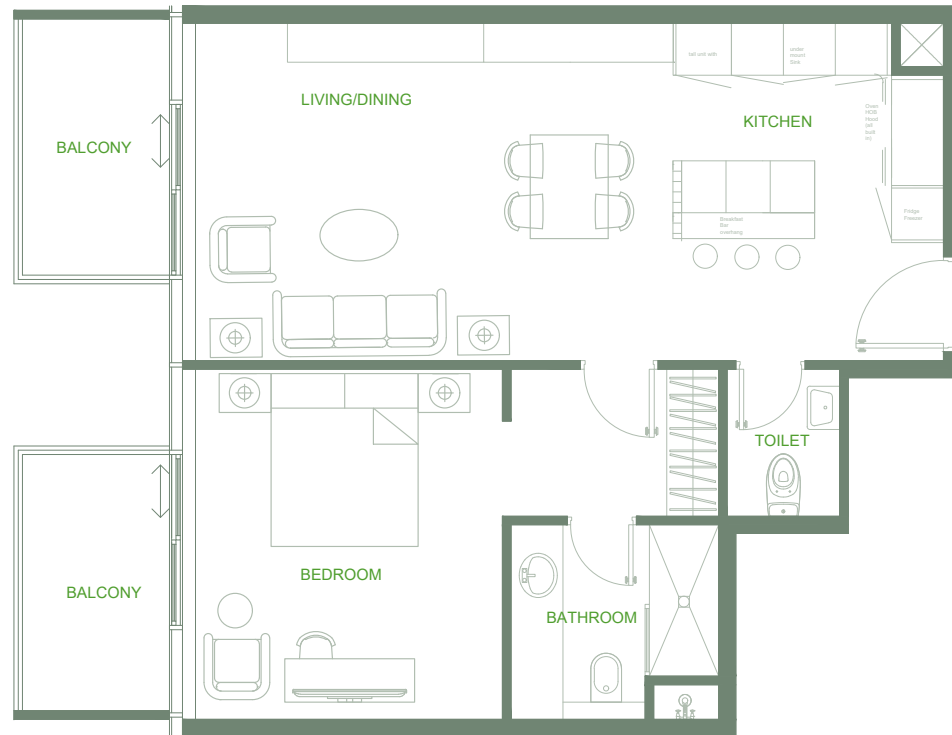
1 Bedroom
Total Area: 842 sq.ft.
Skyline View



O Ten Floor Plan 1st floor

◆ Series 05

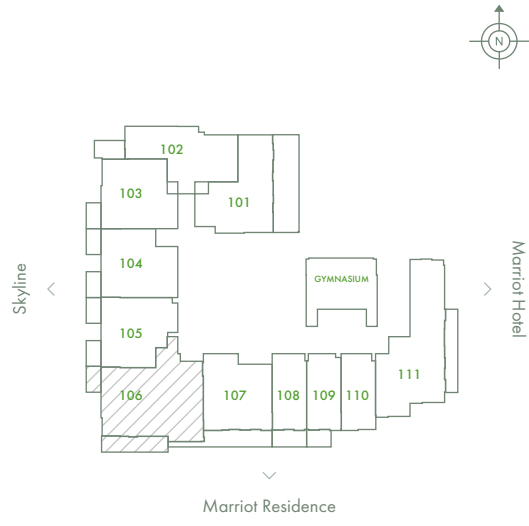
1 Bedroom
Total Area: 821 sq.ft.
Skyline View



O Ten Floor Plan 1st floor

◆ *Series 06*

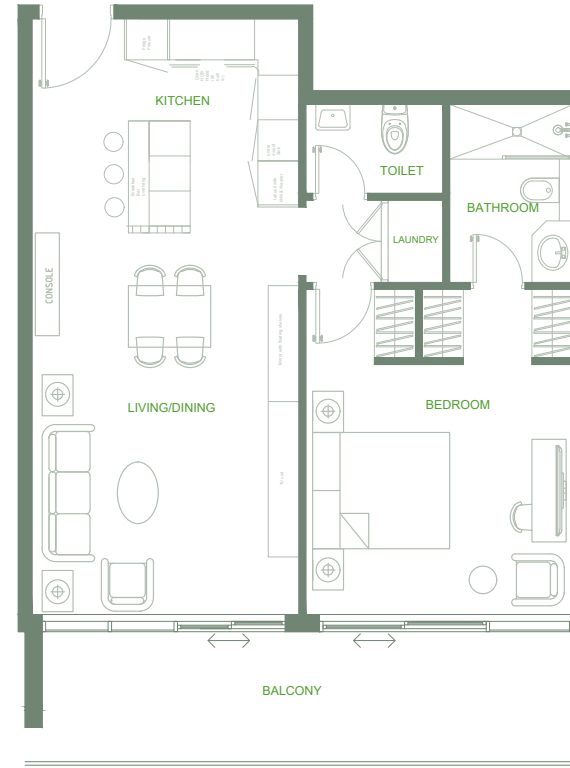
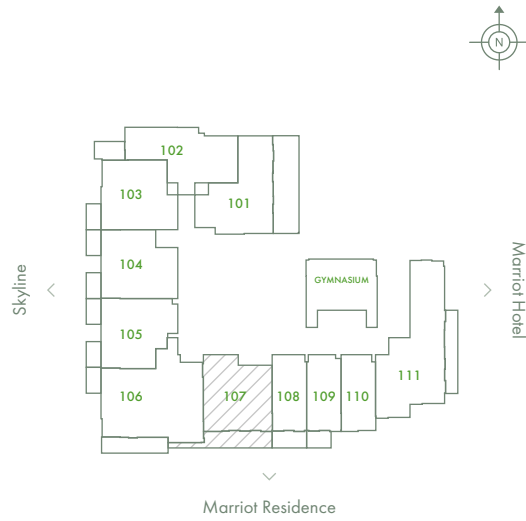
2 Bedrooms
Total Area: 1,395 sq.ft.
Skyline View



O Ten Floor Plan 1st floor

◆ *Series 07*

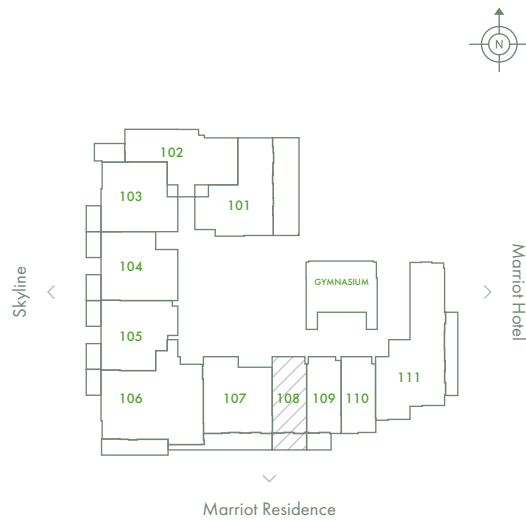
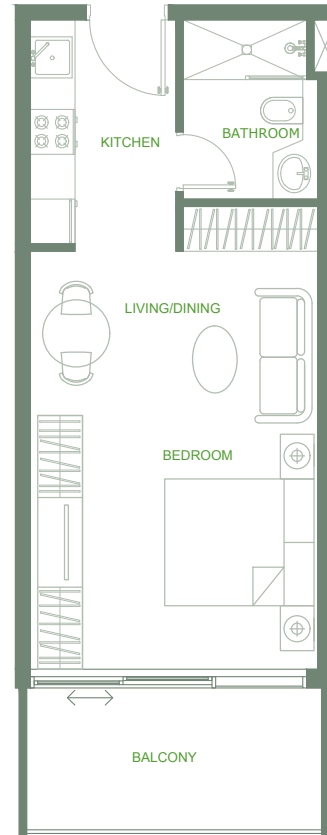
1 Bedroom
Total Area: 933 sq.ft.
Skyline View



O Ten Floor Plan 1st floor

◆ *Series 08*

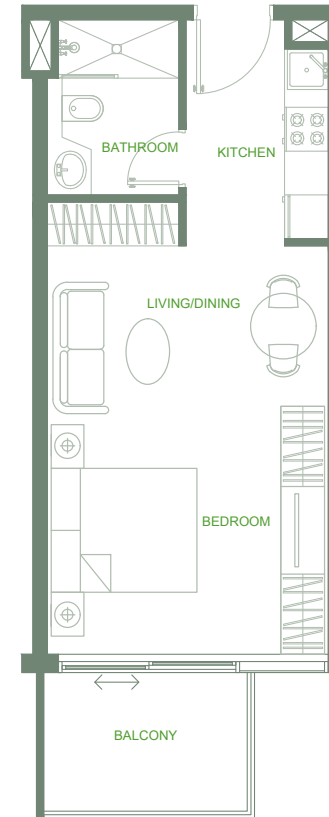
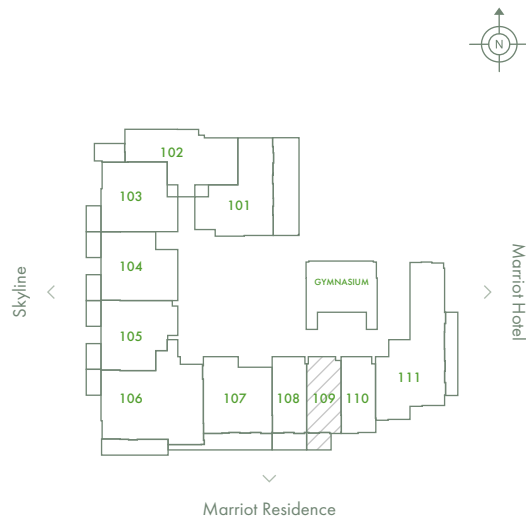
Studio
Total Area: 476 sq.ft.
Skyline View



O Ten Floor Plan 1st floor

◆ *Series 09*

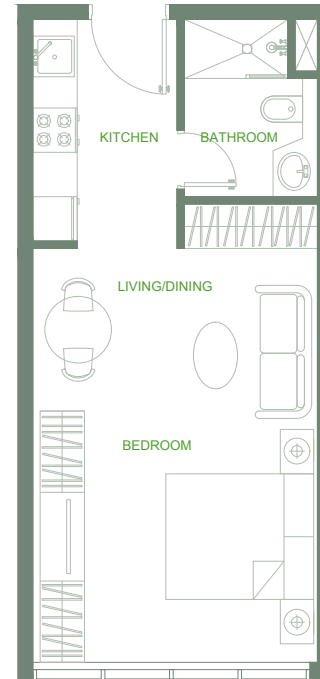
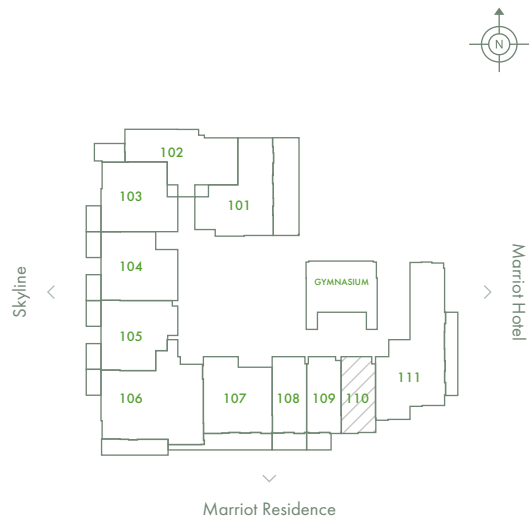
Studio
Total Area: 449 sq.ft.
Skyline View



O Ten Floor Plan 1st floor

◆ *Series 10*

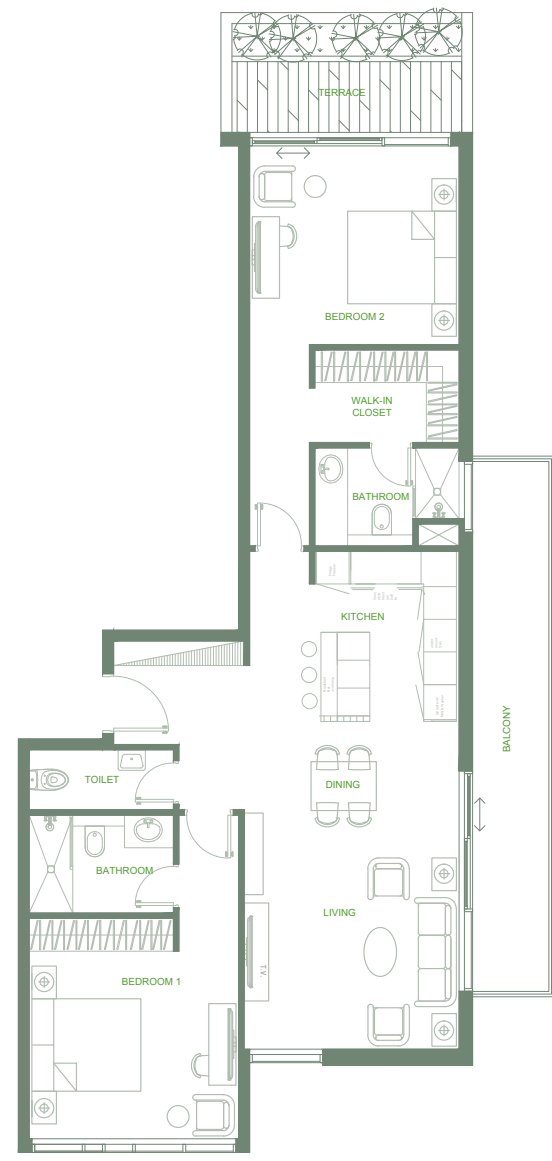
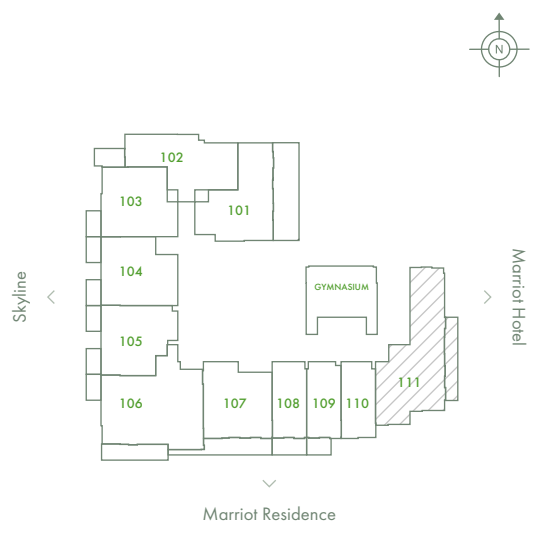
Studio
Total Area: 387 sq.ft.
Skyline View



O Ten Floor Plan 1st floor

◆ Series 11

2 Bedrooms
Total Area: 1,278 sq.ft.
Street View

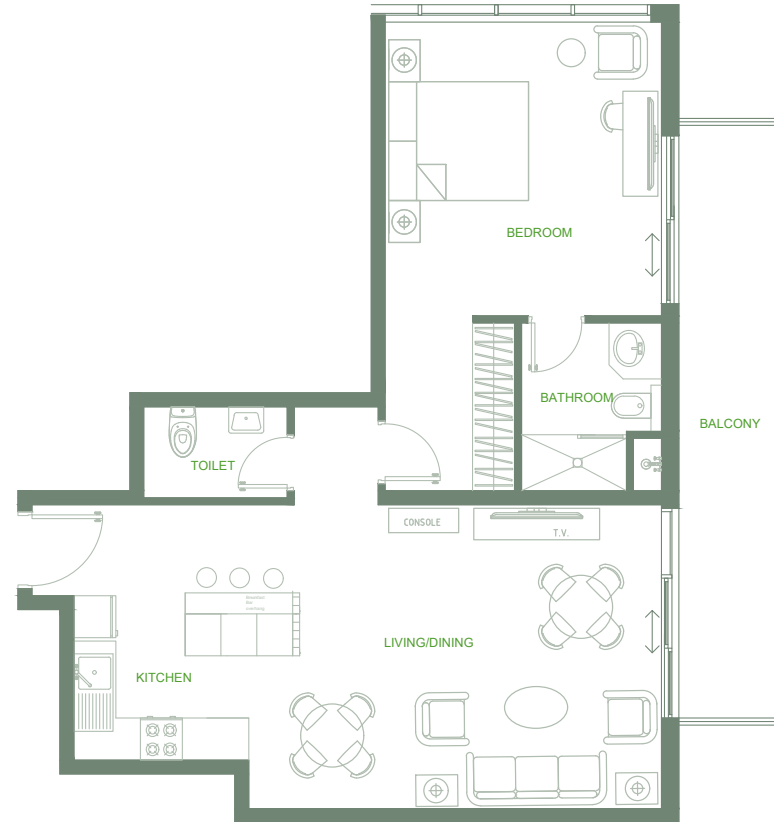
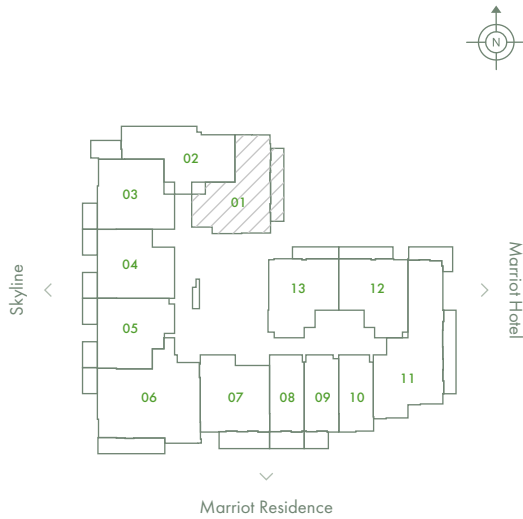


2nd - 7th *Floor*

O Ten Floor Plan 2nd - 7th floor

◆ Series 01

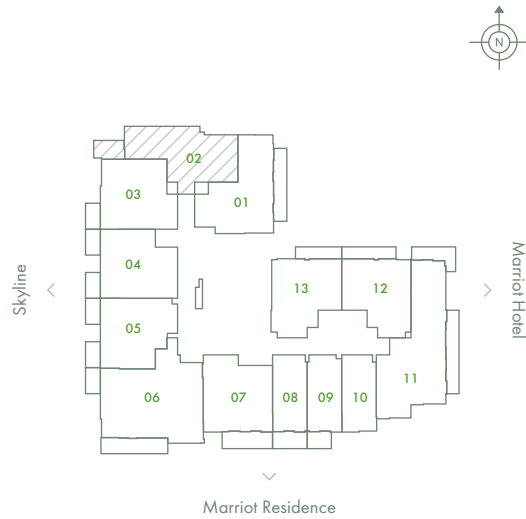
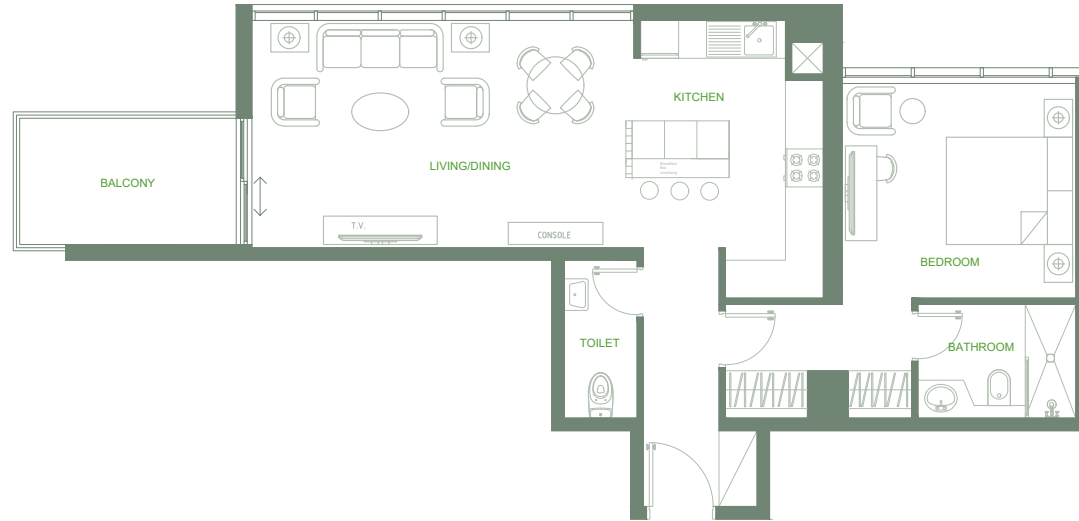
1 Bedroom
Total Area: 941 sq.ft.
Pool View



O Ten Floor Plan 2nd - 7th floor

◆ *Series 02*

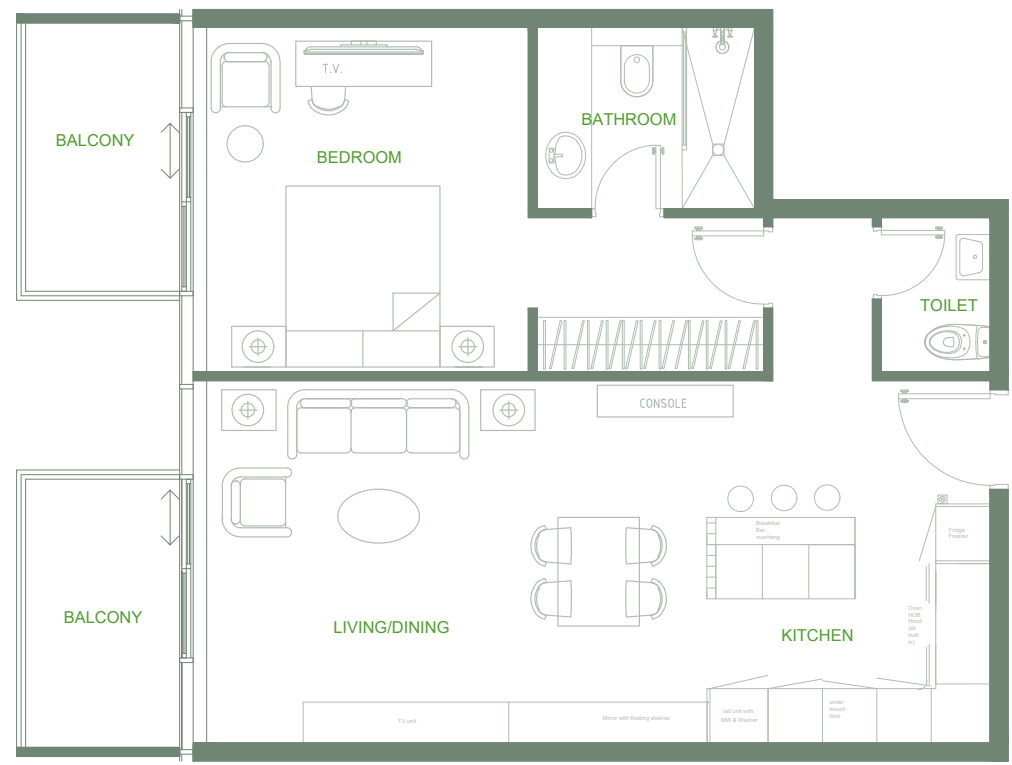
1 Bedroom
Total Area: 857 sq.ft.
Skyline View



O Ten Floor Plan 2nd - 7th floor

◆ Series 04

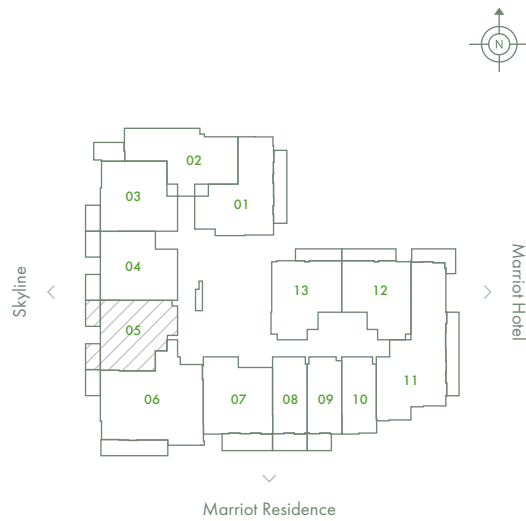
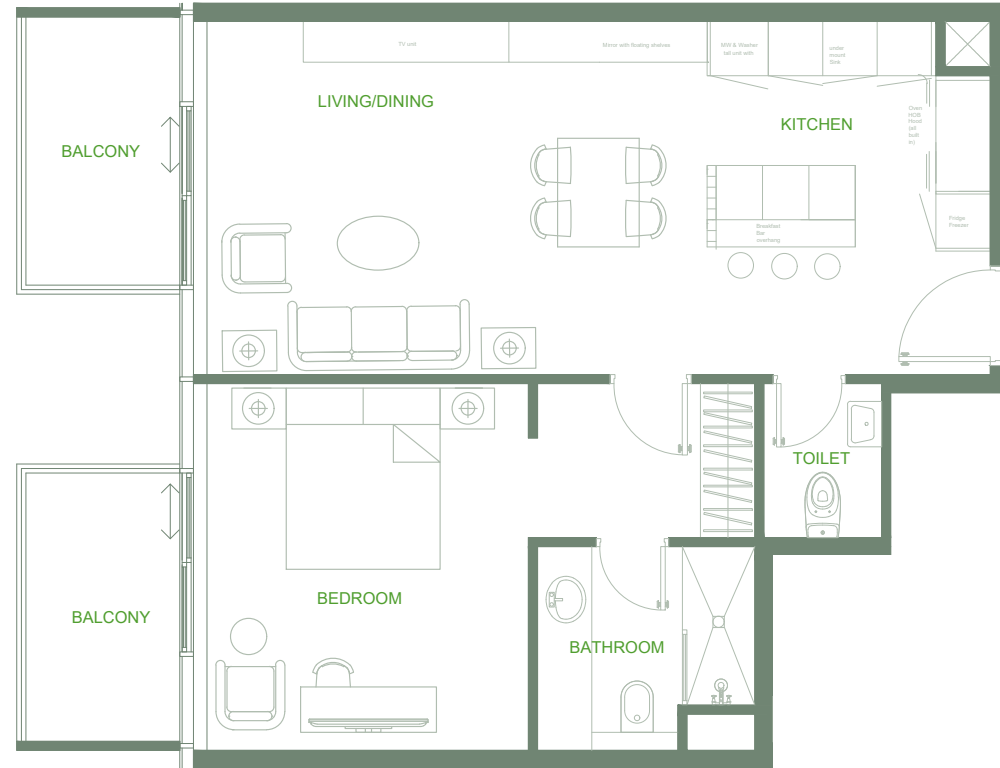
1 Bedroom
Total Area: 842 sq.ft.
Skyline View



O Ten Floor Plan 2nd - 7th floor

♦ Series 05

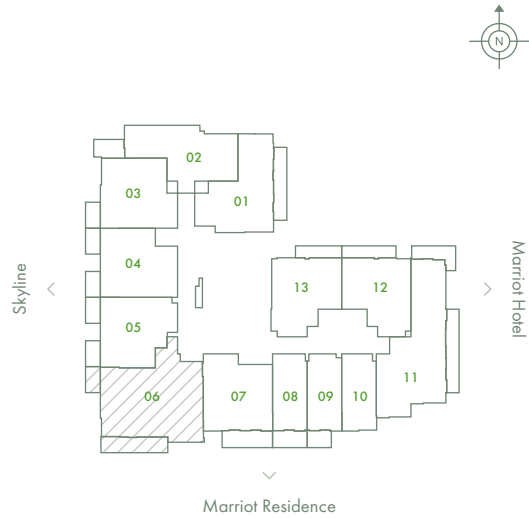
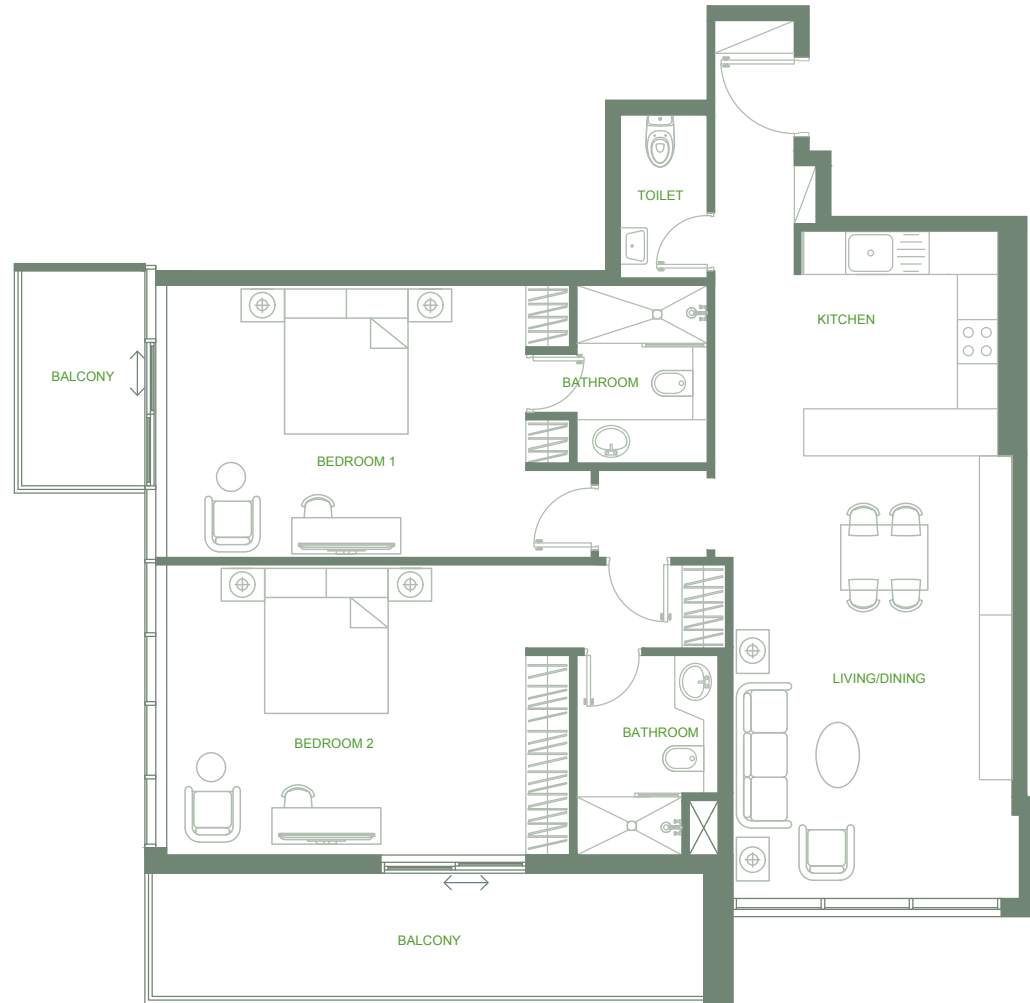
1 Bedroom
Total Area: 821 sq.ft.
Skyline View



O Ten Floor Plan 2nd - 7th floor

◆ Series 06

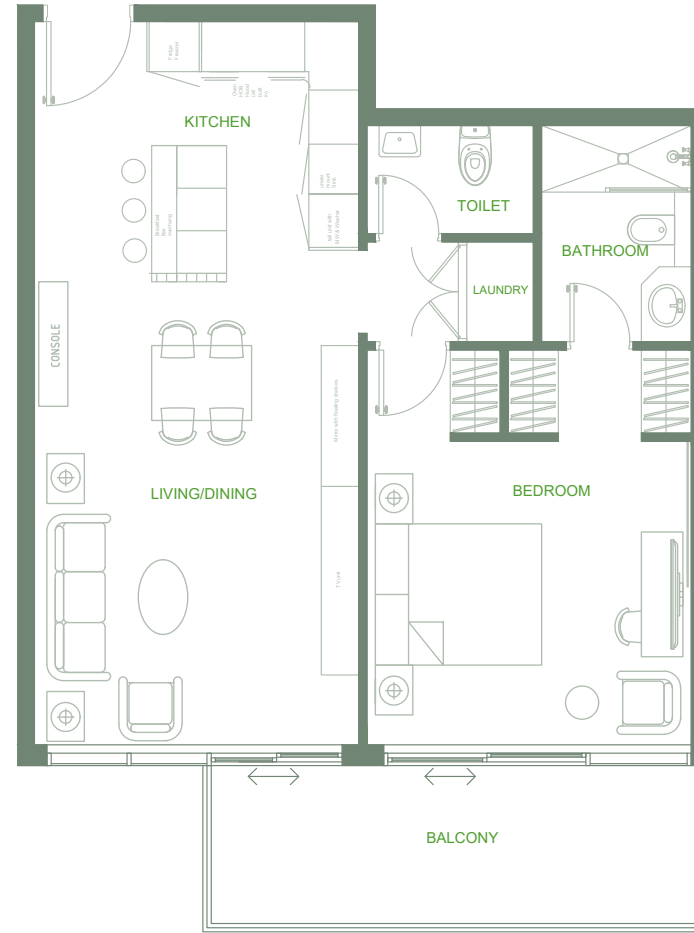
2 Bedrooms
Total Area: 1,395 sq.ft.
Skyline View



O Ten Floor Plan 2nd - 7th floor

◆ Series 07

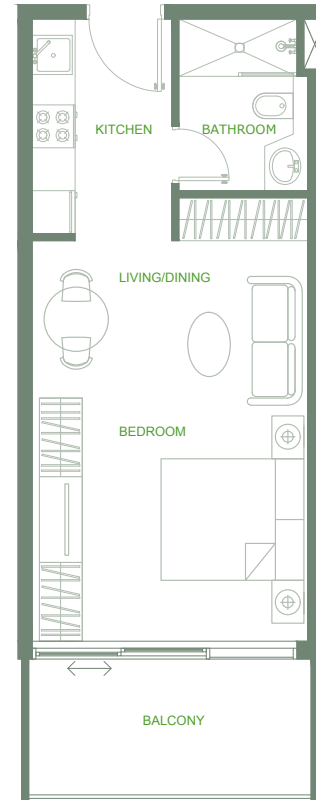
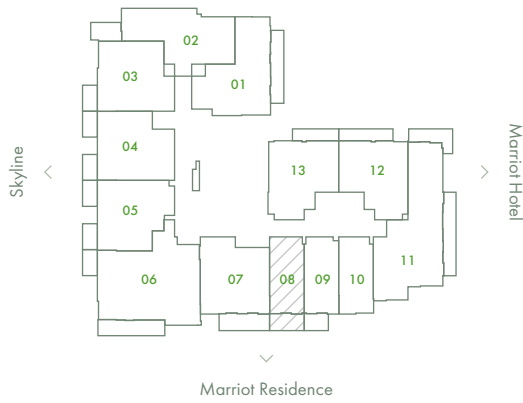
1 Bedroom
Total Area: 859 sq.ft.
Skyline View



O Ten Floor Plan 2nd - 7th floor

◆ *Series 08*

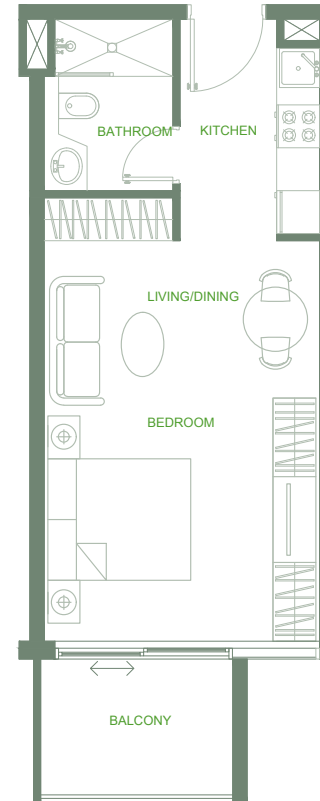
Studio
Total Area: 476 sq.ft.
Skyline View



O Ten Floor Plan 2nd - 7th floor

◆ *Series 09*

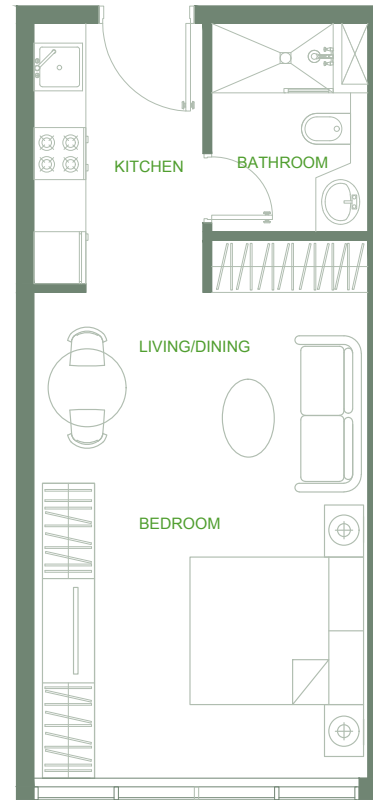
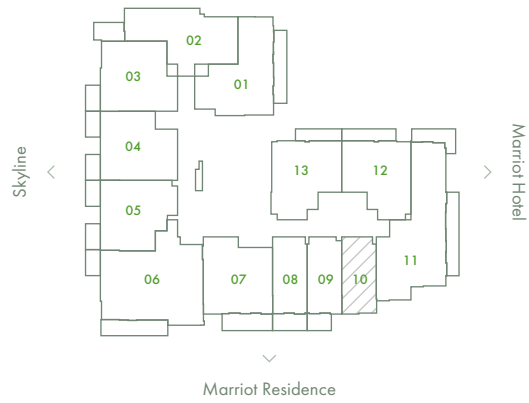
Studio
Total Area: 449 sq.ft.
Skyline View



O Ten Floor Plan 2nd - 7th floor

◆ *Series 10*

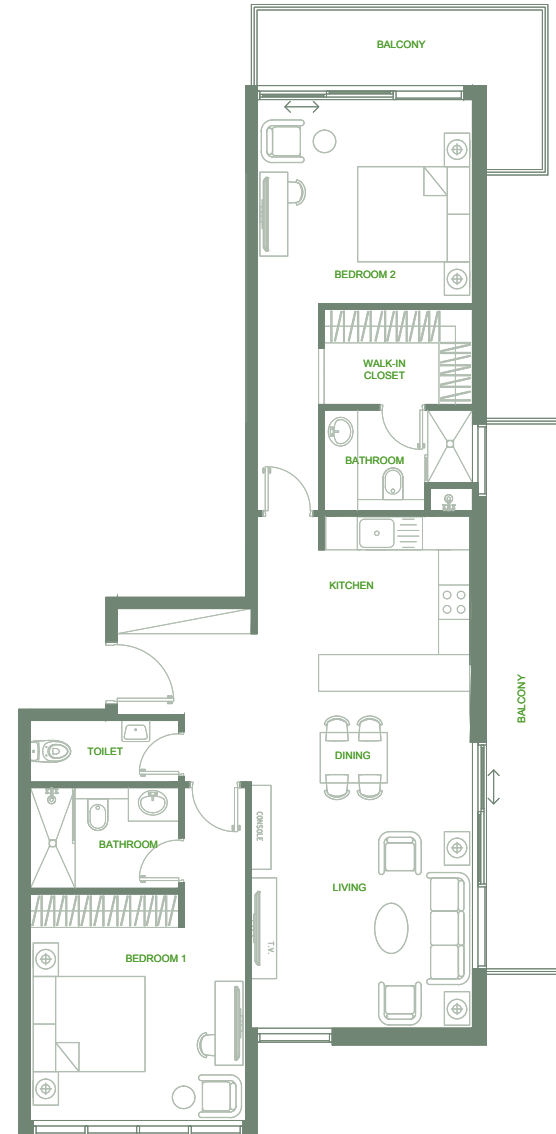
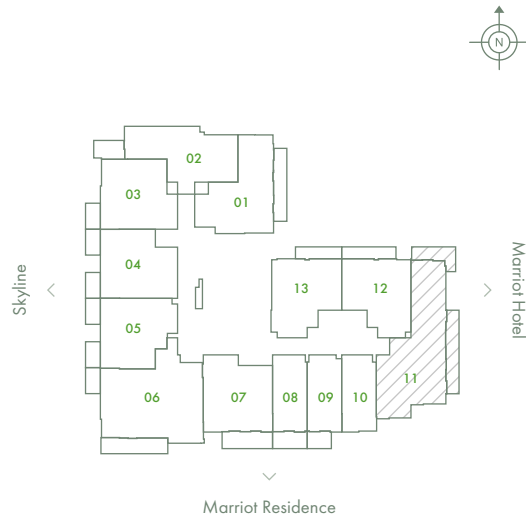
Studio
Total Area: 387 sq.ft.
Skyline View



O Ten Floor Plan 2nd - 7th floor

◆ *Series 11*

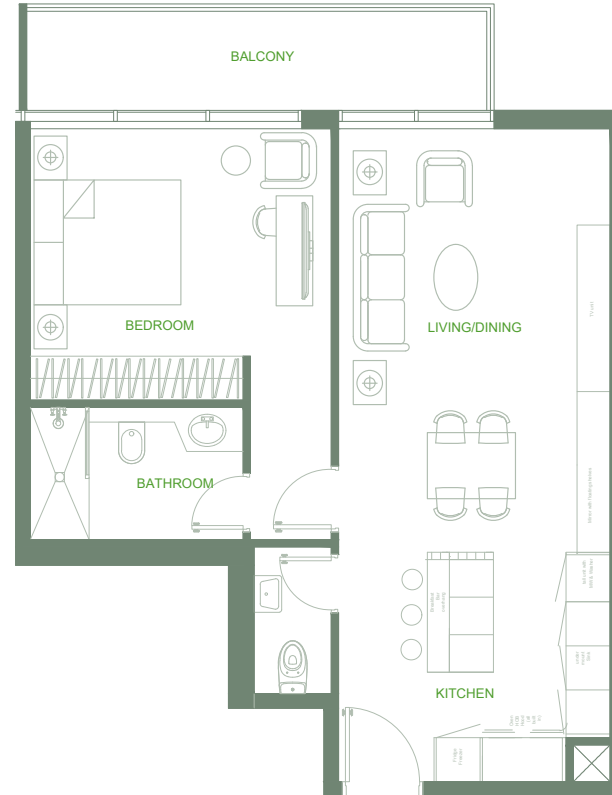
2 Bedrooms
Total Area: 1,382 sq.ft.
Street View



O Ten Floor Plan 2nd - 7th floor

◆ *Series 12*

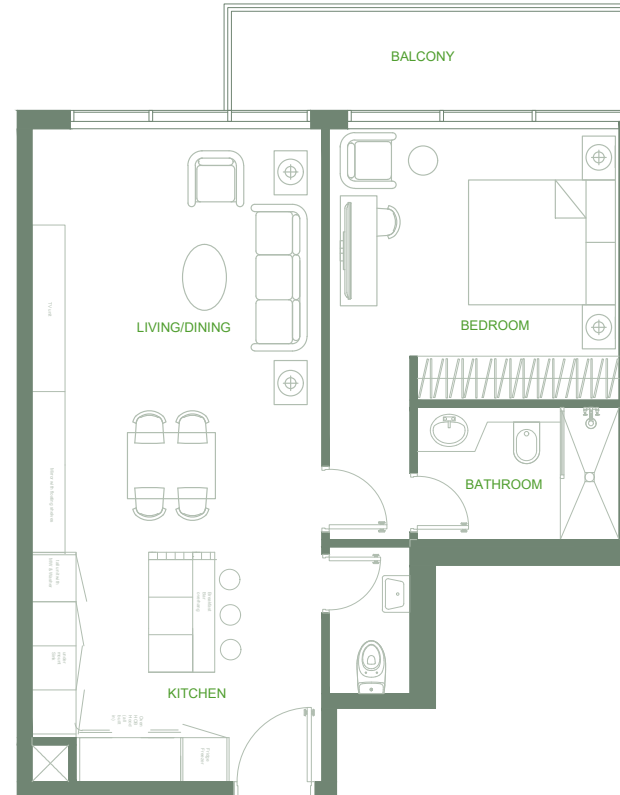
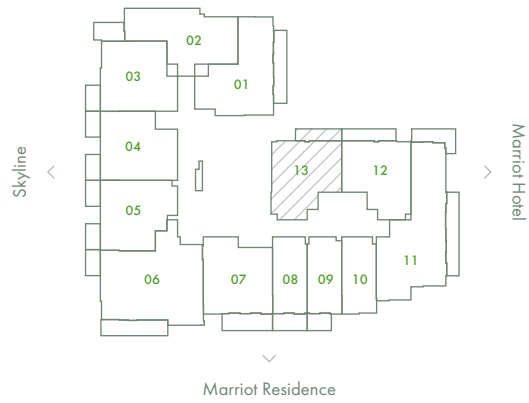
1 Bedroom
Total Area : 774 sq.ft.
Pool View



O Ten Floor Plan 2nd - 7th floor

♦ *Series 13*

1 Bedroom
Total Area: 780 sq.ft.
Pool View

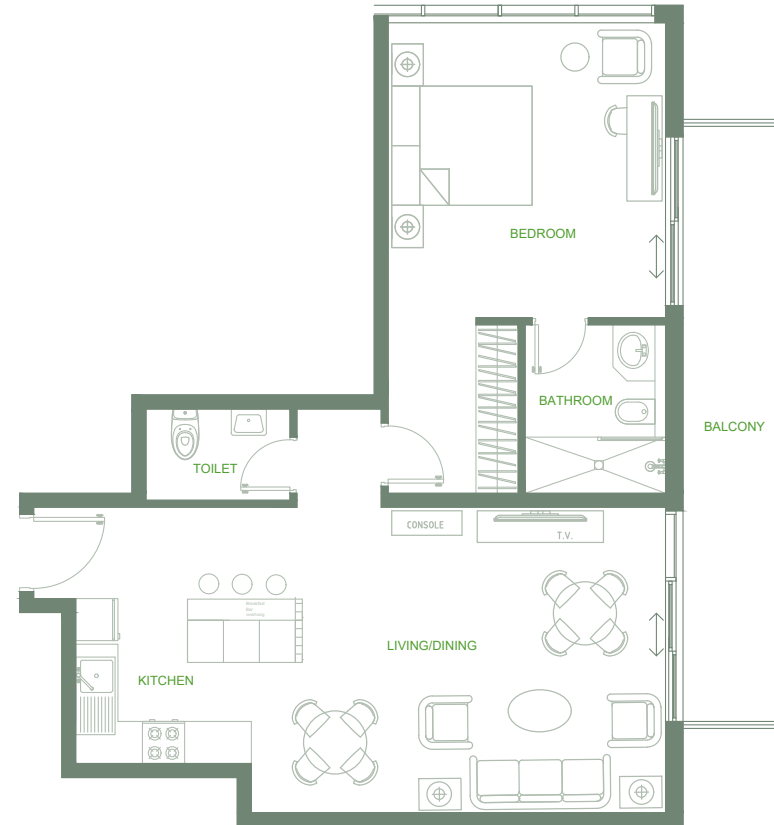
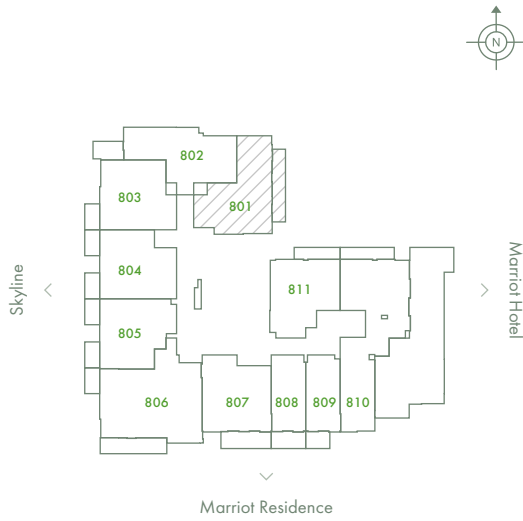


8th *Floor*

O Ten Floor Plan 8th floor

◆ *Series 01*

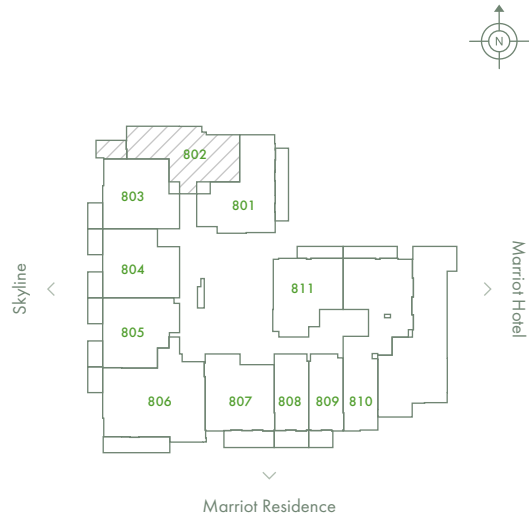
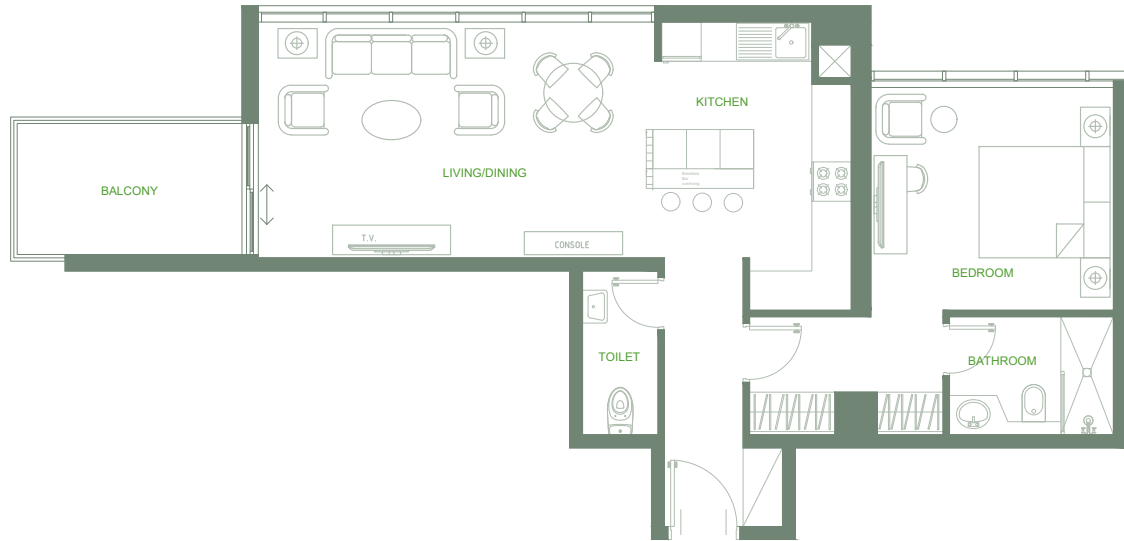
1 Bedroom
Total Area: 941 sq.ft.
Pool View



O Ten Floor Plan 8th floor

◆ Series 02

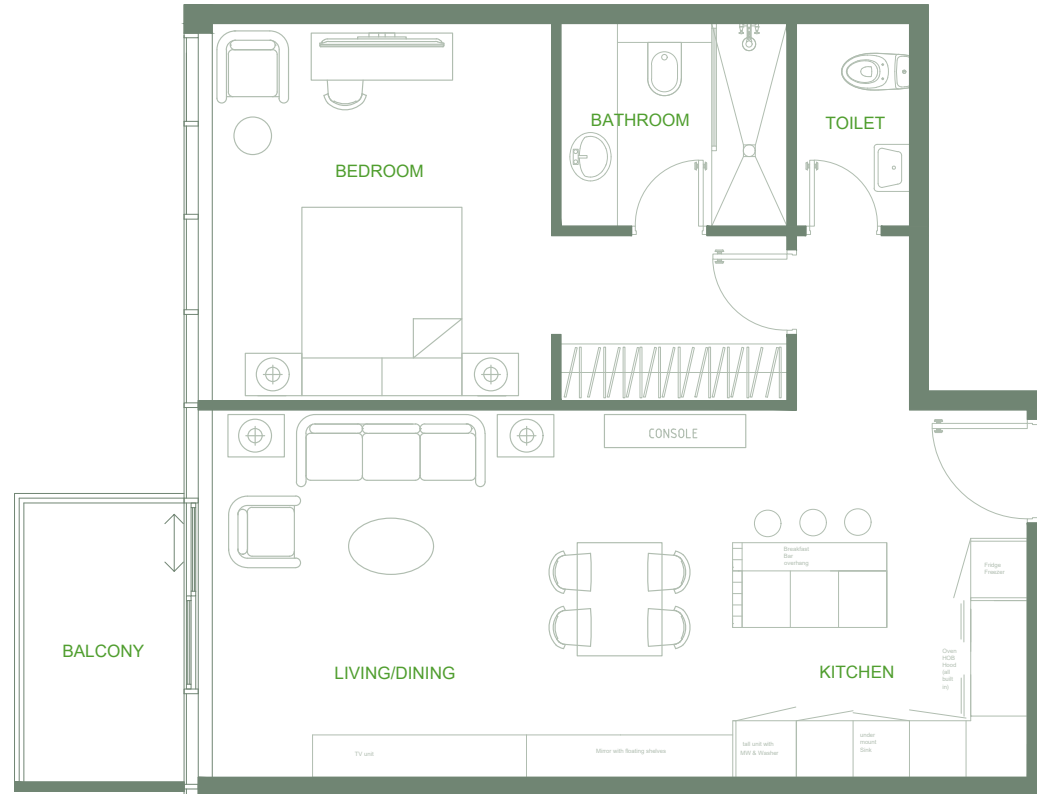
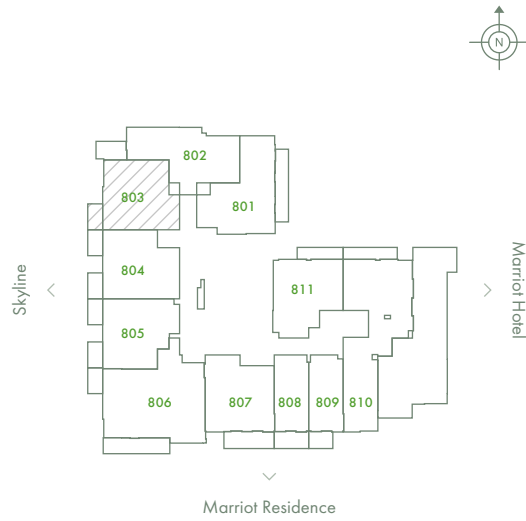
1 Bedroom
Total Area: 856 sq.ft.
Skyline View



O Ten Floor Plan 8th floor

◆ Series 03

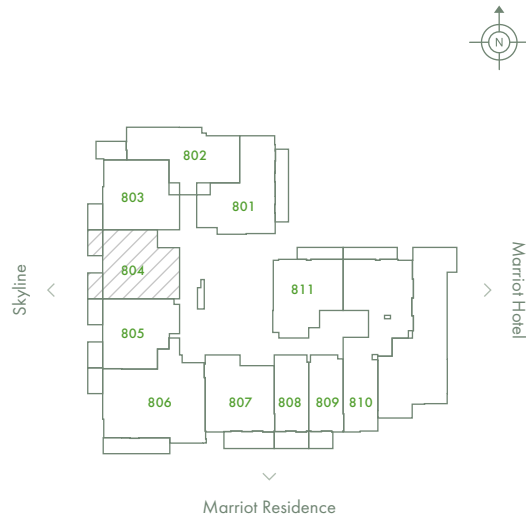
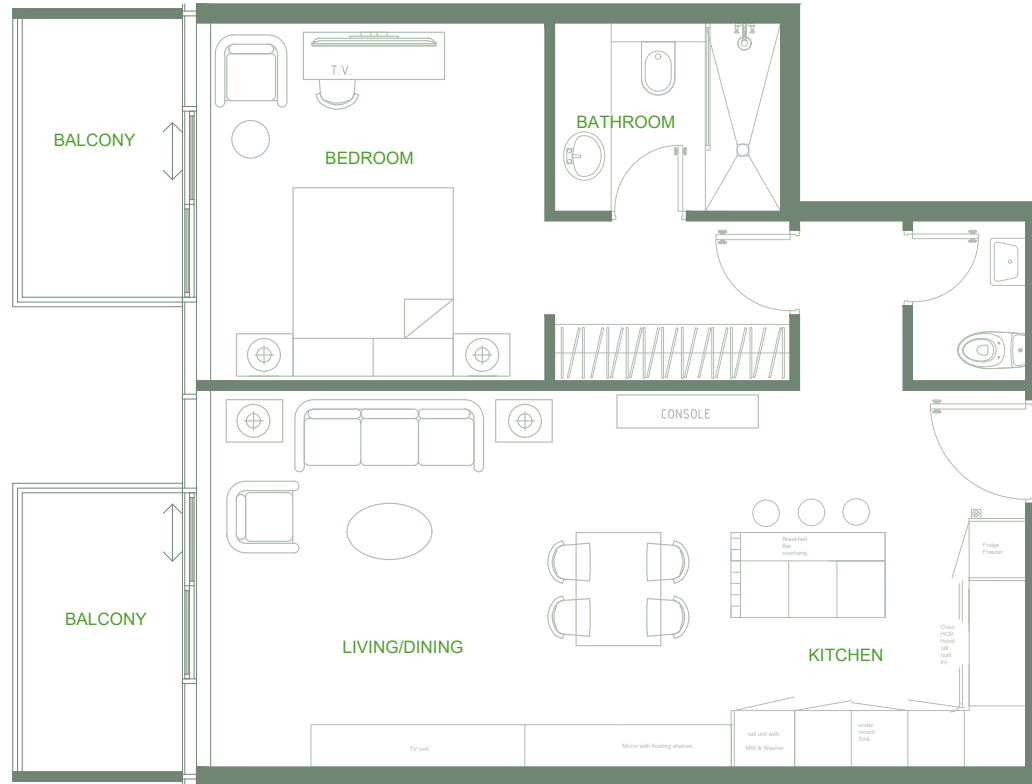
1 Bedroom
Total Area: 795 sq.ft.
Skyline View



O Ten Floor Plan 8th floor

◆ Series 04

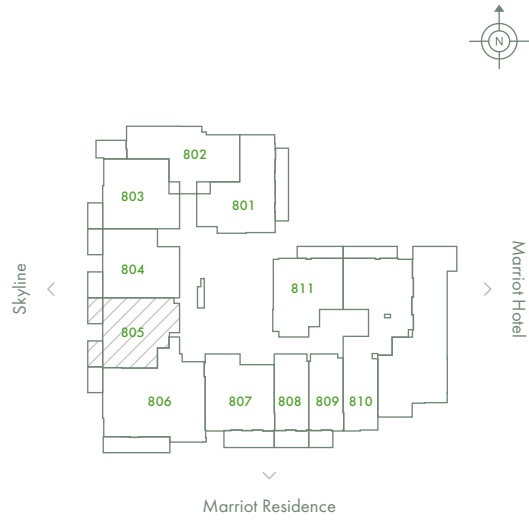
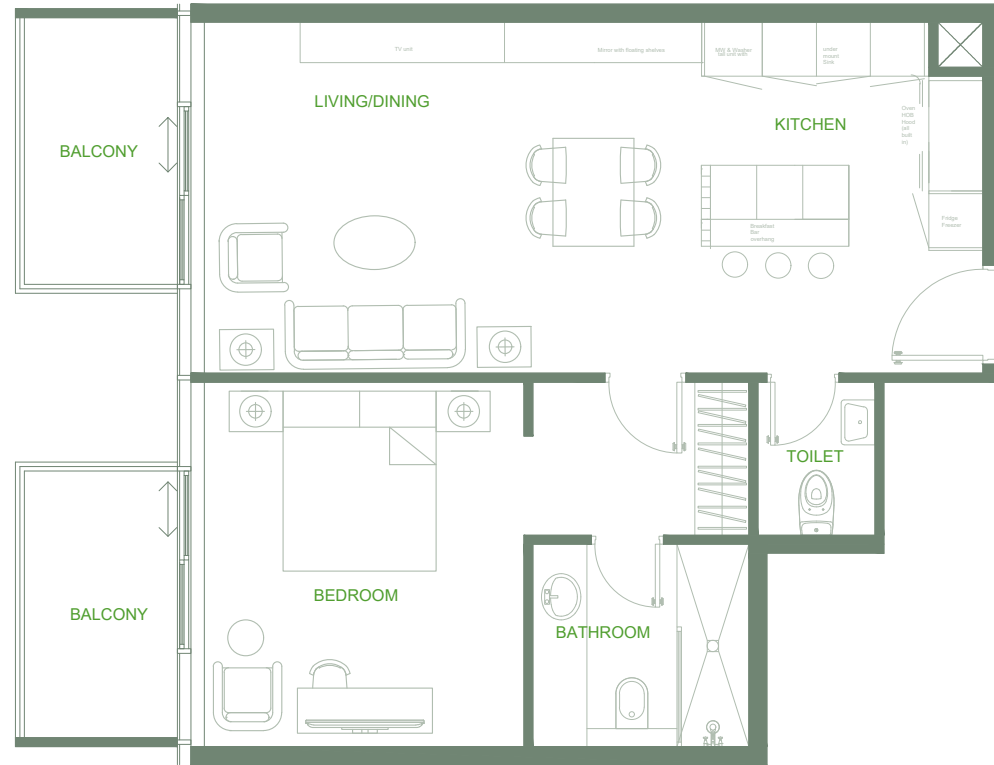
1 Bedroom
Total Area: 843 sq.ft.
Skyline View



O Ten Floor Plan 8th floor

◆ Series 05

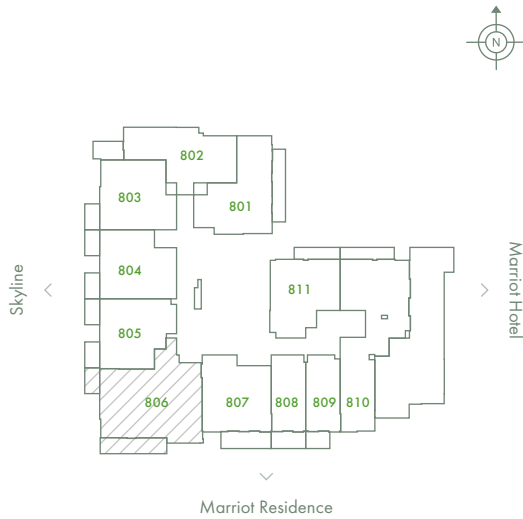
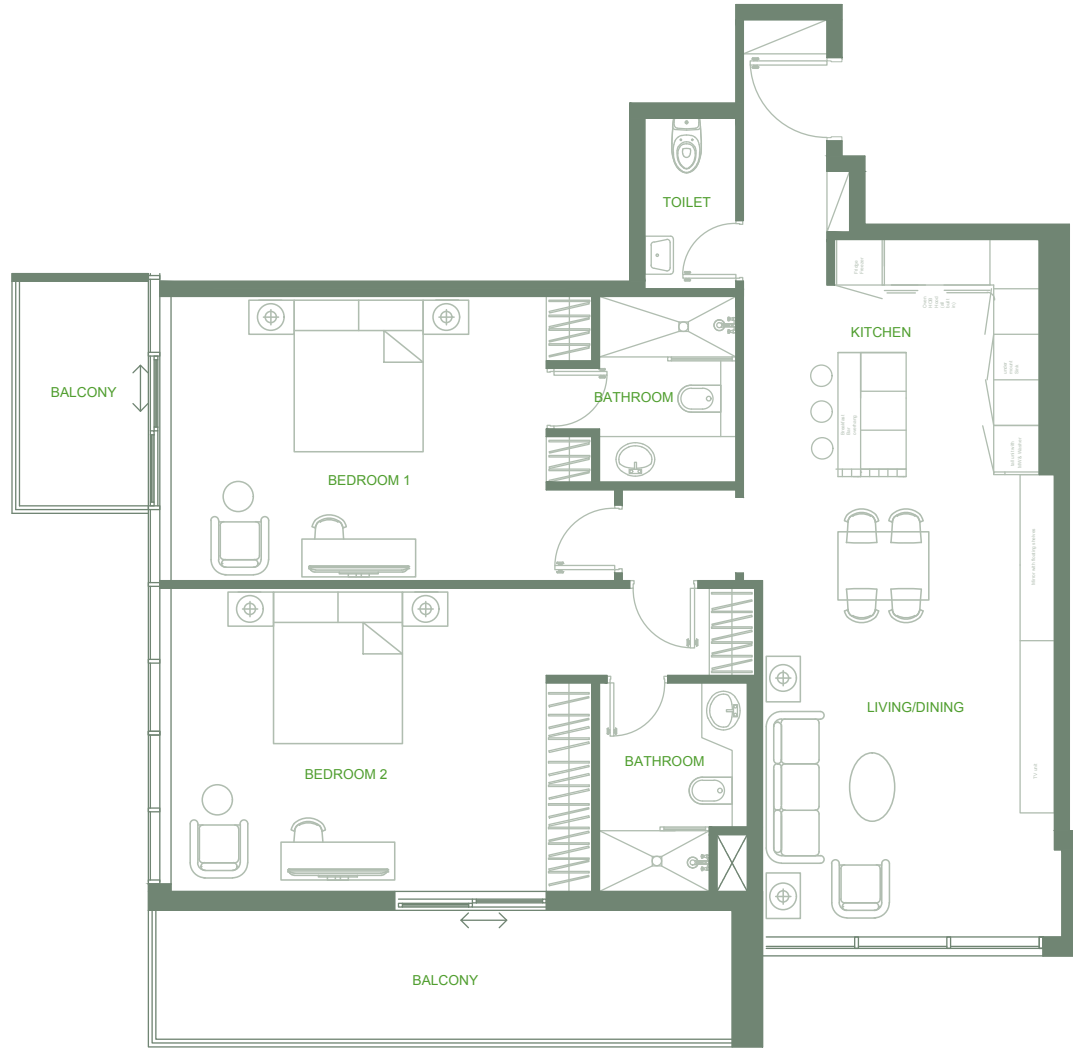
1 Bedroom
Total Area: 821 sq.ft.
Skyline View



O Ten Floor Plan 8th floor

◆ *Series 06*

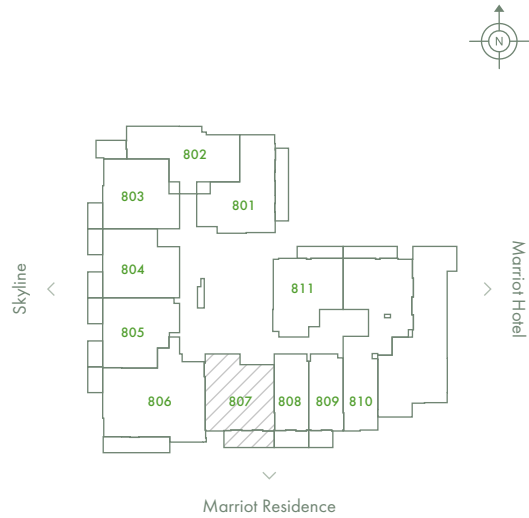
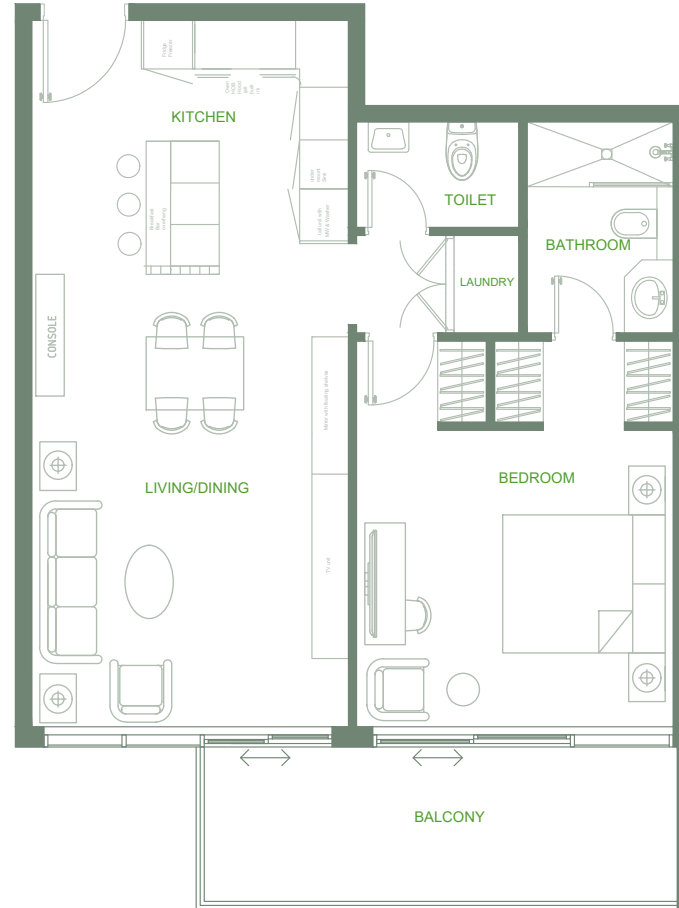
2 Bedrooms
Total Area: 1,394 sq.ft.
Skyline View



O Ten Floor Plan 8th floor

◆ *Series 07*

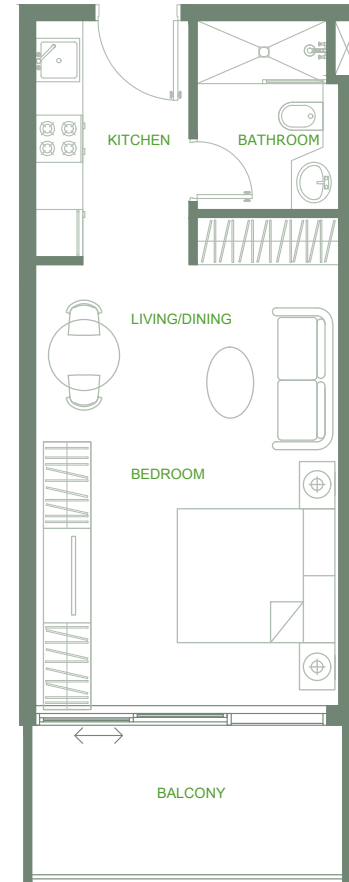
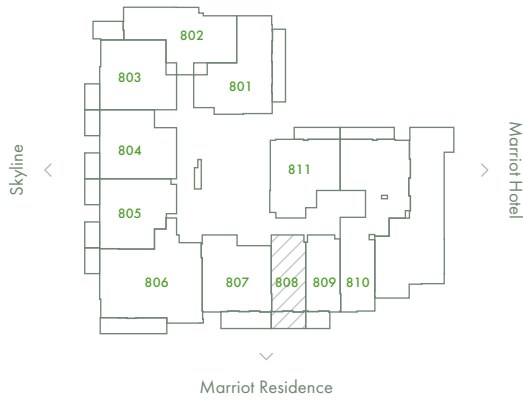
1 Bedroom
Total Area: 860 sq.ft.
Skyline View



O Ten Floor Plan 8th floor

◆ *Series 08*

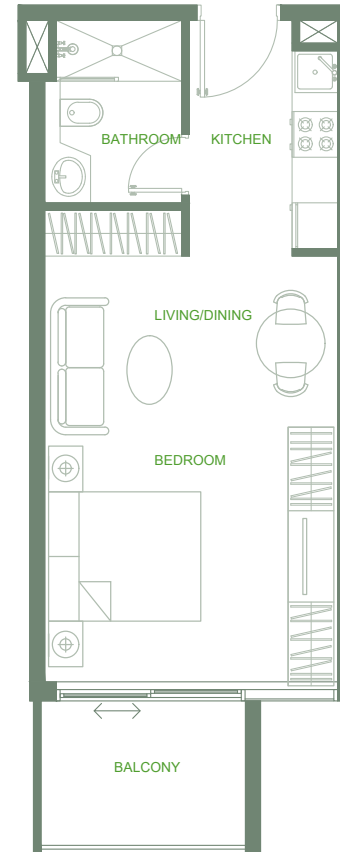
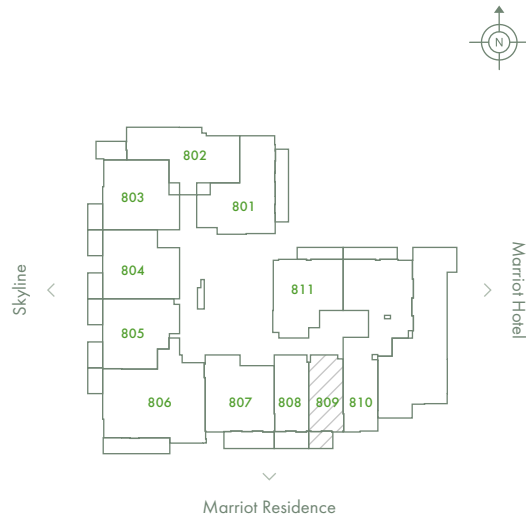
Studio
Total Area: 476 sq.ft.
Skyline View



O Ten Floor Plan 8th floor

◆ *Series 09*

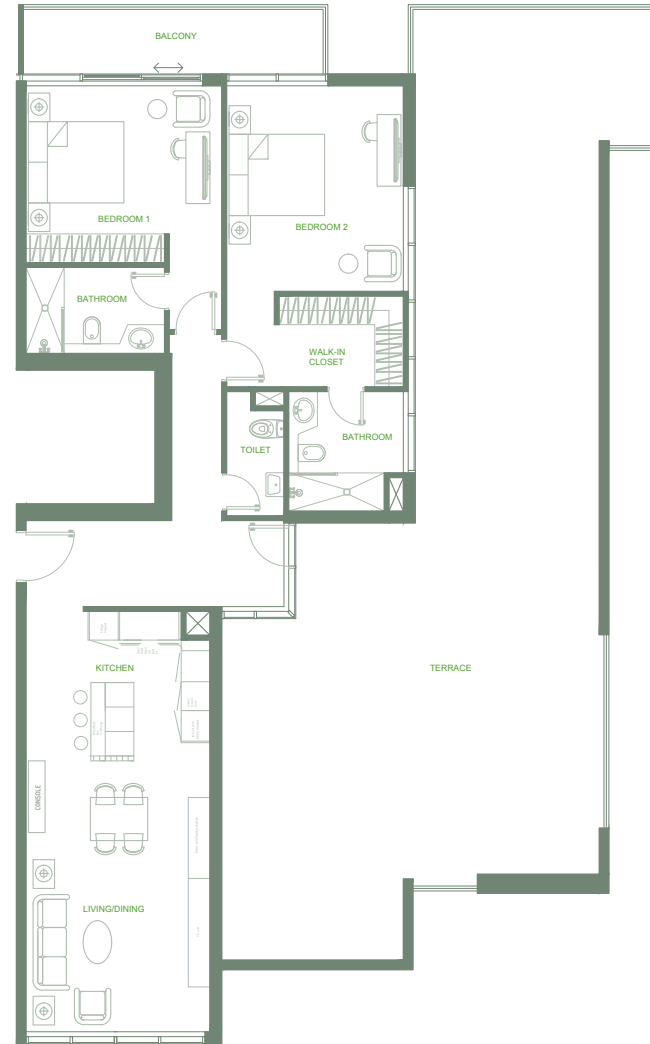
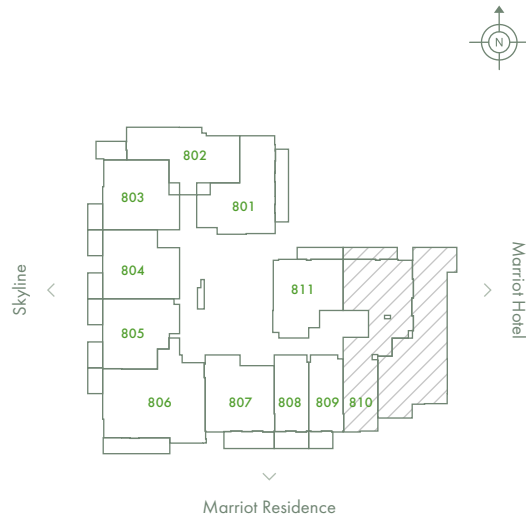
Studio
Total Area: 449 sq.ft.
Skyline View



O Ten Floor Plan 8th floor

◆ *Series 10*

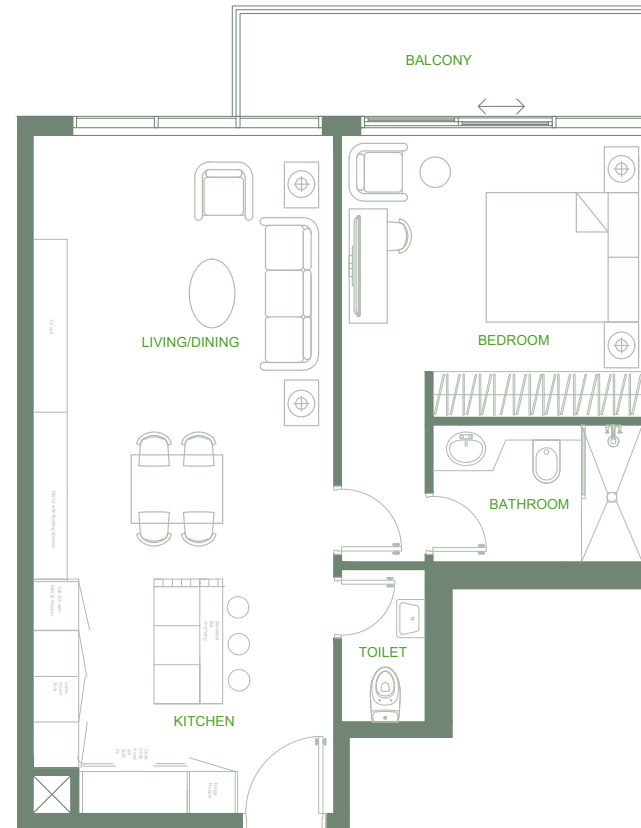
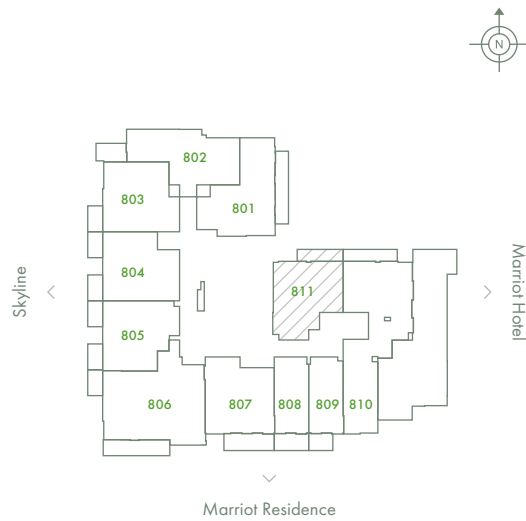
2 Bedrooms
Total Area: 2,517 sq.ft.
Street View



O Ten Floor Plan 8th floor

◆ *Series 11*

1 Bedroom
Total Area: 780 sq.ft.
Pool View

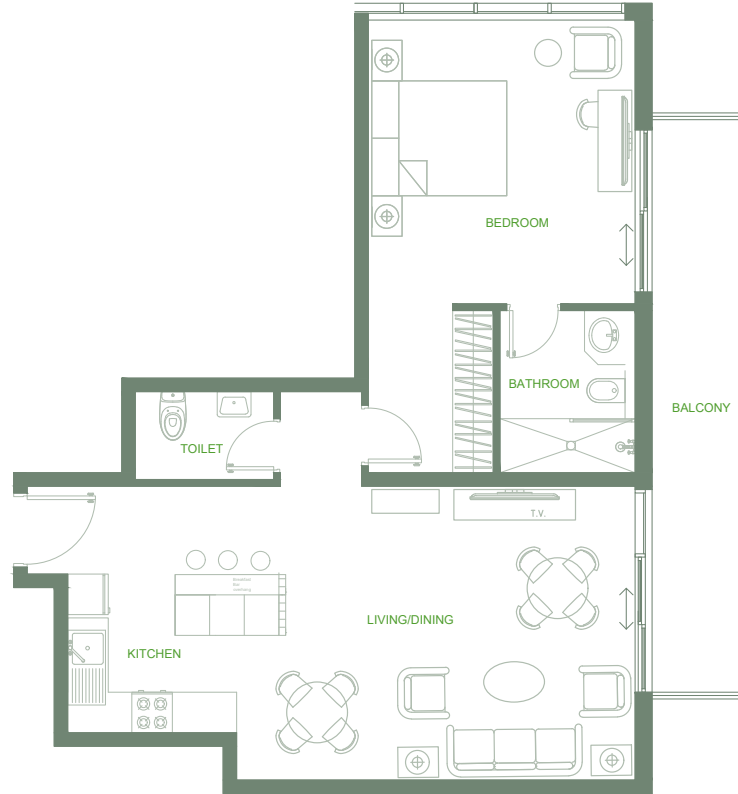
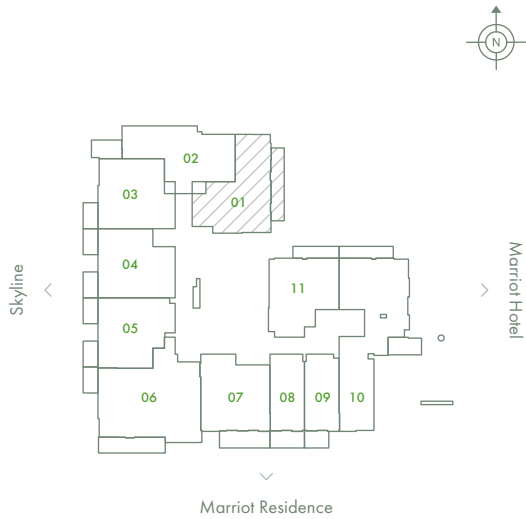


9th - 10th *Floor*

O Ten Floor Plan 9th - 10th floor

◆ Series 01

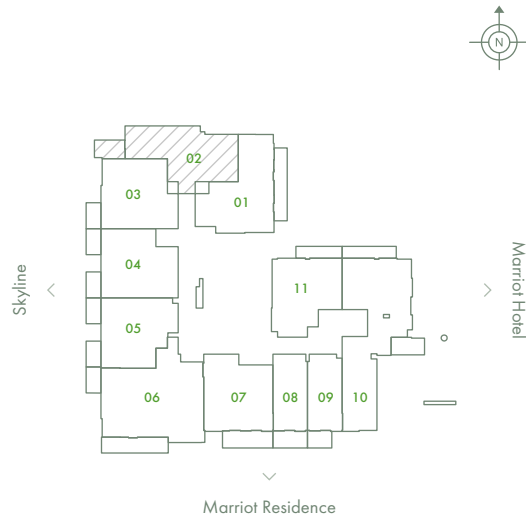
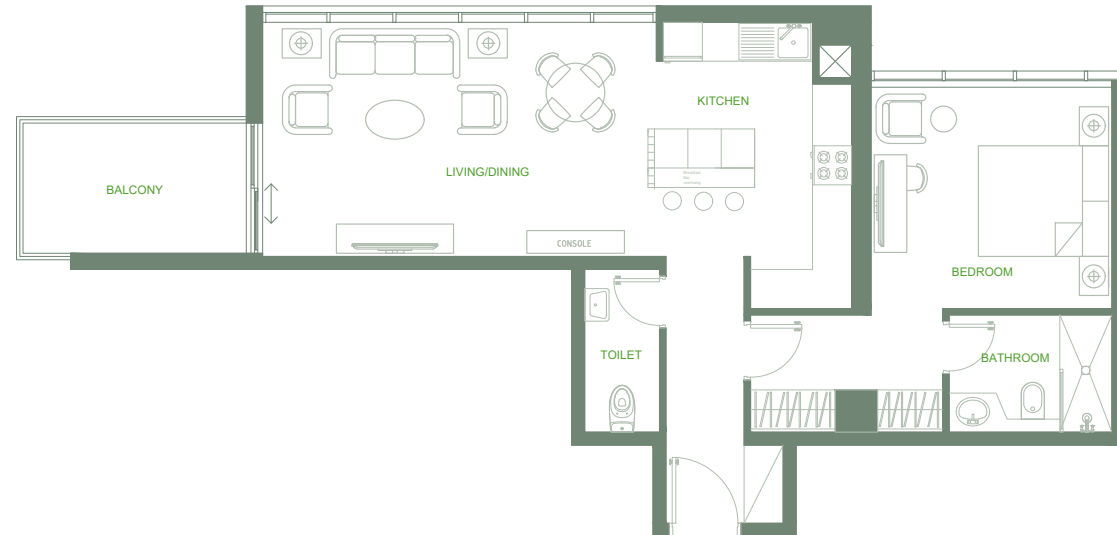
1 Bedroom
Total Area: 941 sq.ft.
Pool View



O Ten Floor Plan 9th - 10th floor

◆ *Series 02*

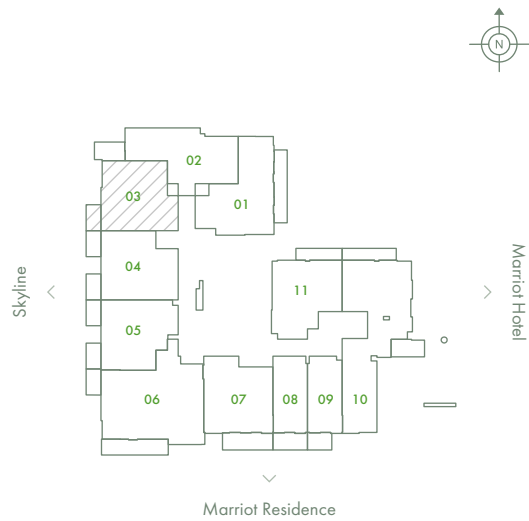
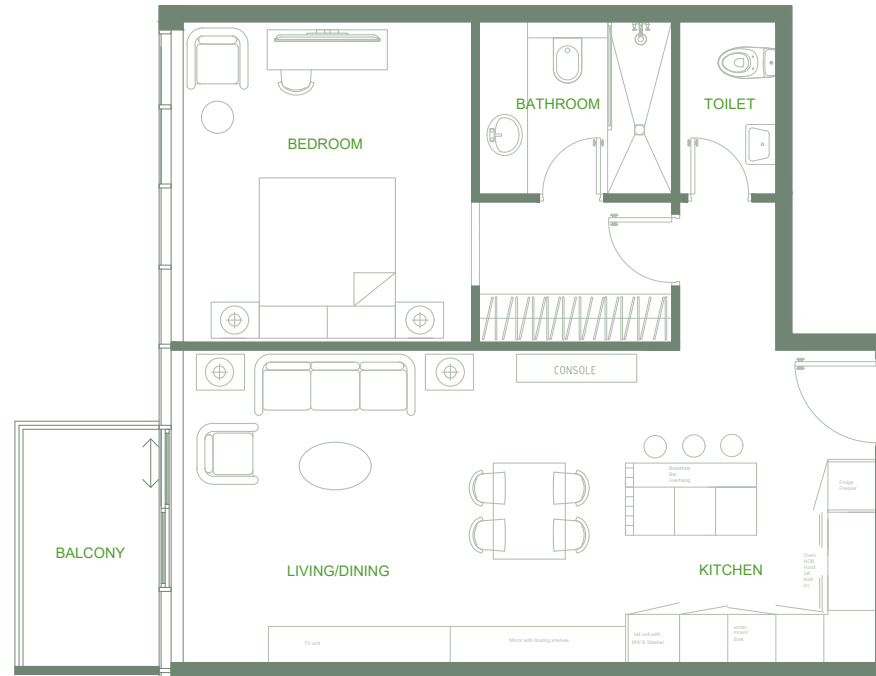
1 Bedroom
Total Area: 856 sq.ft.
Skyline View



O Ten Floor Plan 9th - 10th floor

◆ *Series 03*

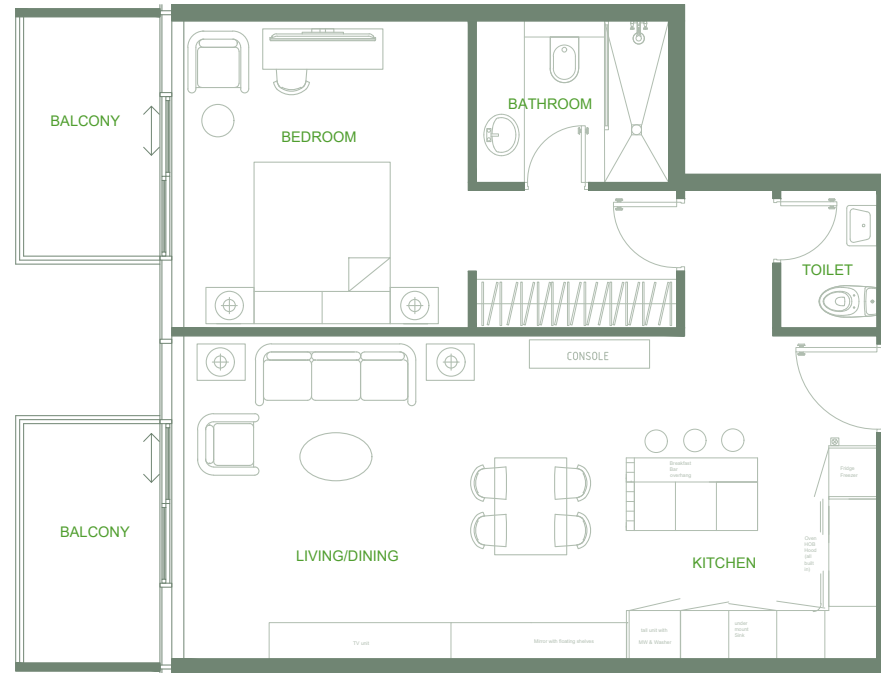
1 Bedroom
Total Area: 843 sq.ft.
Skyline View



O Ten Floor Plan 9th - 10th floor

◆ Series 04

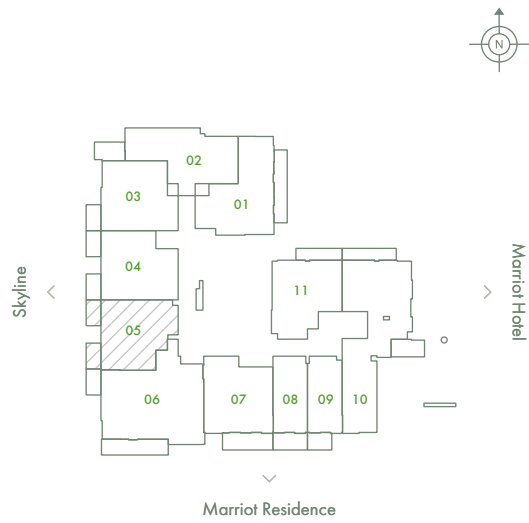
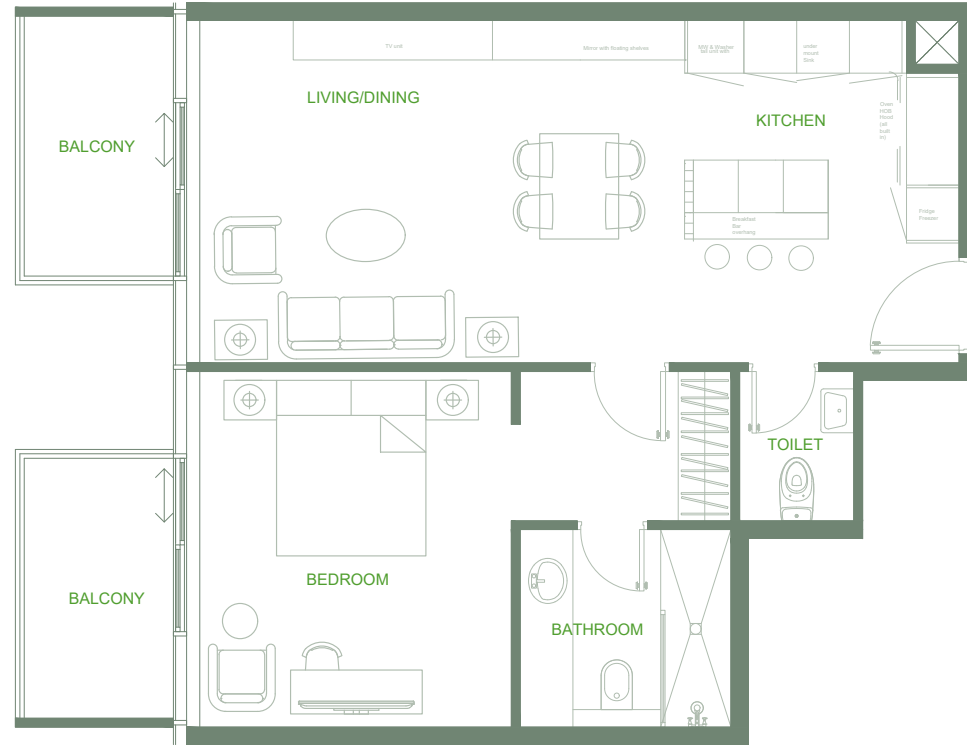
1 Bedroom
Total Area: 843 sq.ft.
Skyline View



O Ten Floor Plan 9th - 10th floor

◆ Series 05

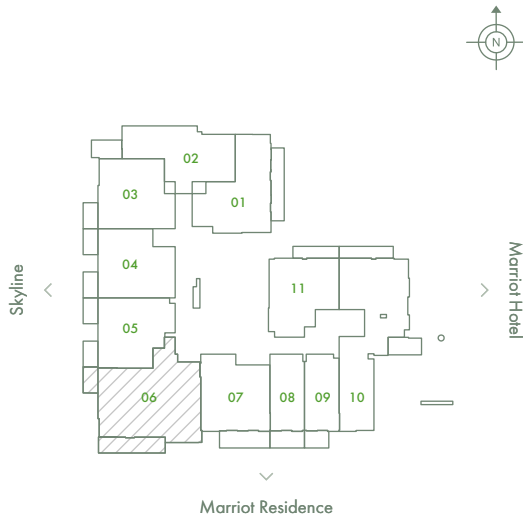
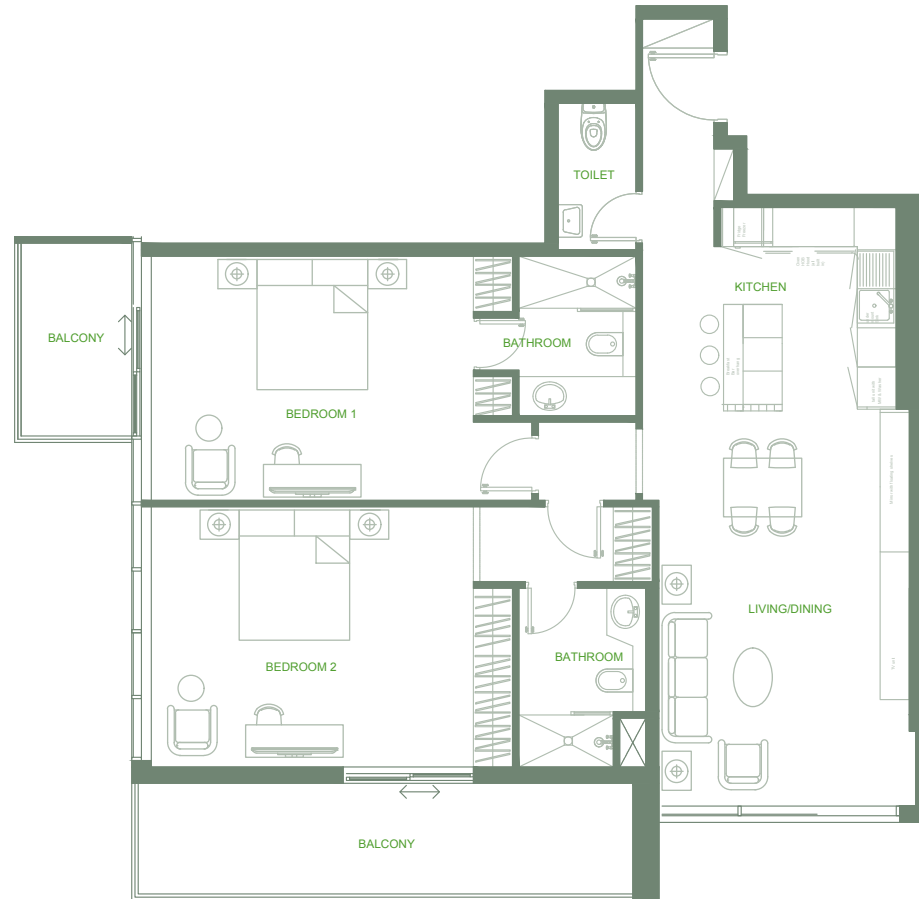
1 Bedroom
Total Area: 821 sq.ft.
Skyline View



O Ten Floor Plan 9th - 10th floor

◆ Series 06

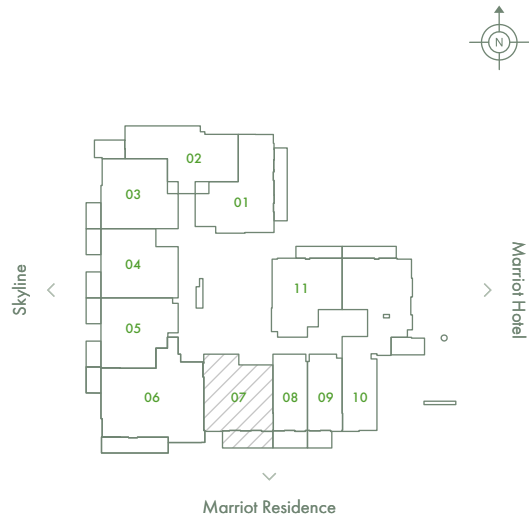
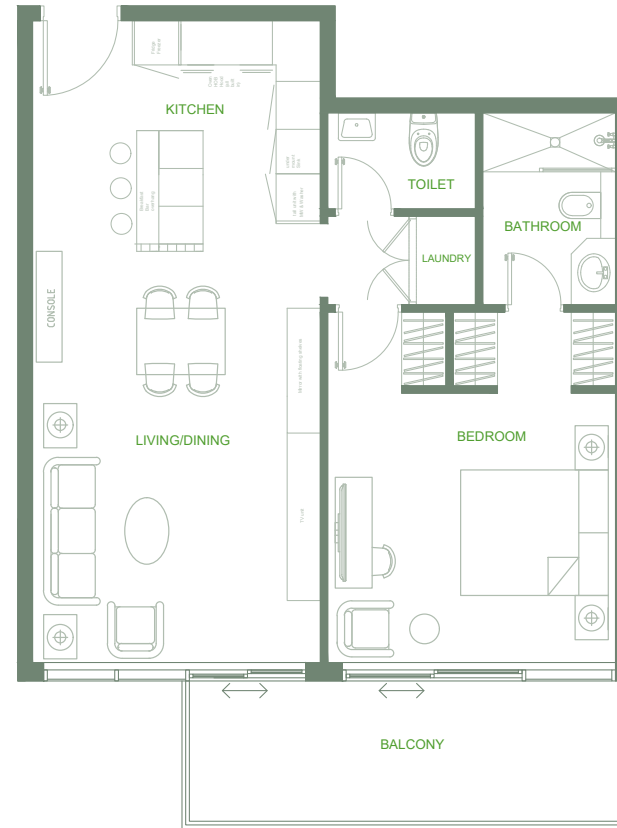
2 Bedrooms
Total Area: 1,395 sq.ft.
Skyline View



O Ten Floor Plan 9th - 10th floor

◆ *Series 07*

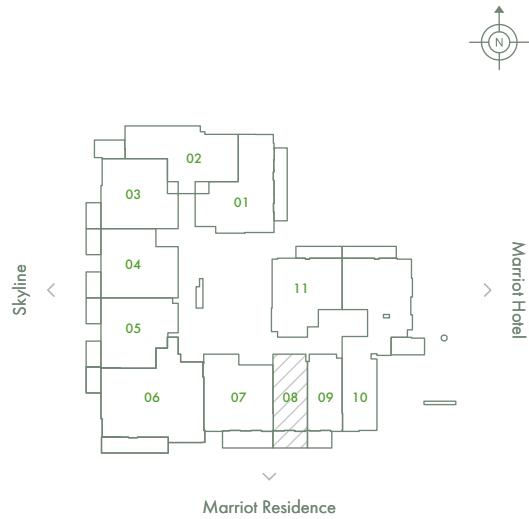
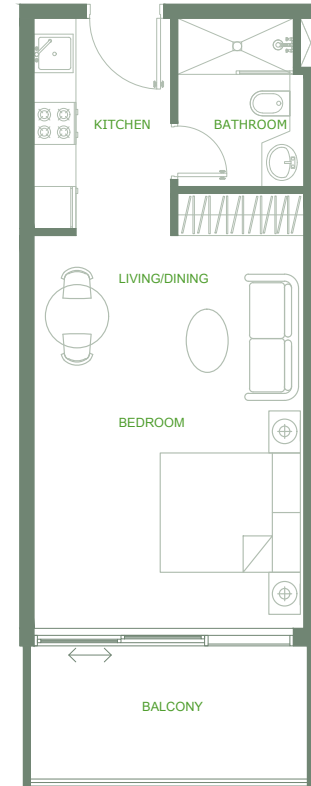
1 Bedroom
Total Area: 860 sq.ft.
Skyline View



O Ten Floor Plan 9th - 10th floor

◆ *Series 08*

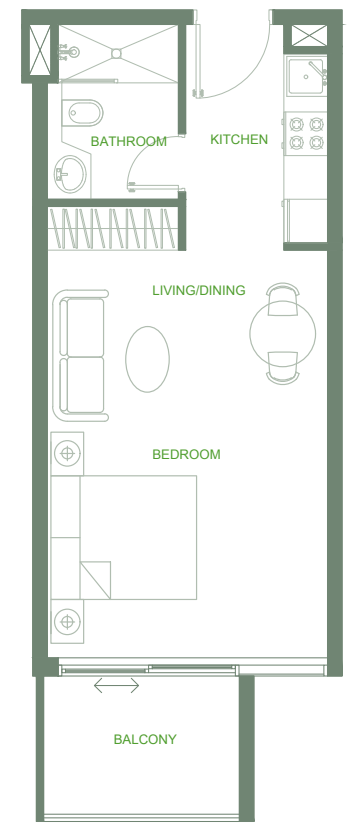
Studio
Total Area: 476 sq.ft.
Skyline View



O Ten Floor Plan 9th - 10th floor

◆ *Series 09*

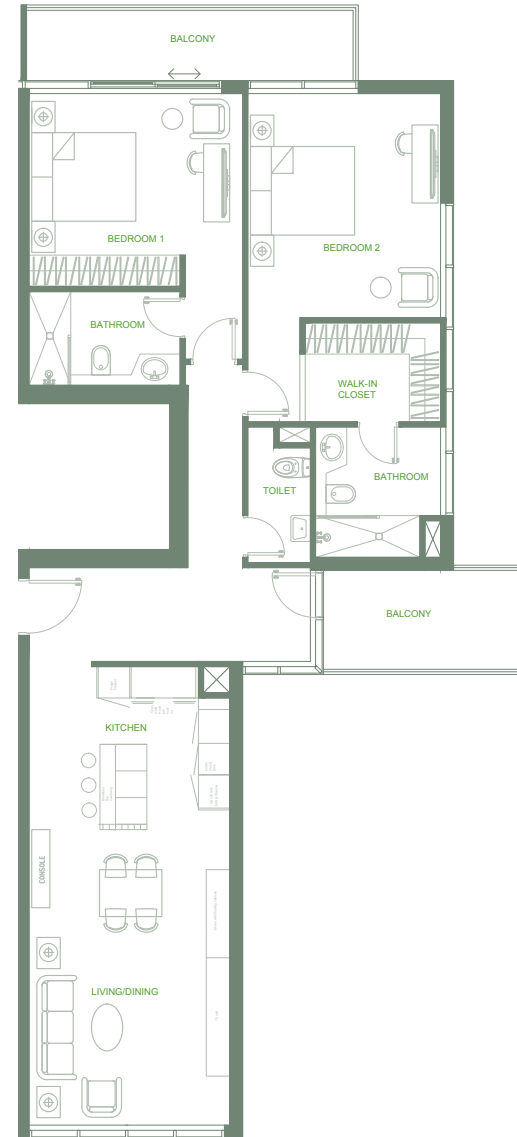
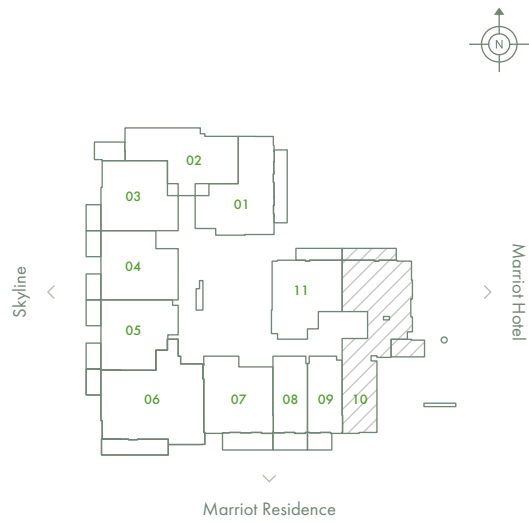
Studio
Total Area: 449 sq.ft.
Skyline View



O Ten Floor Plan 9th - 10th floor

◆ *Series 10*

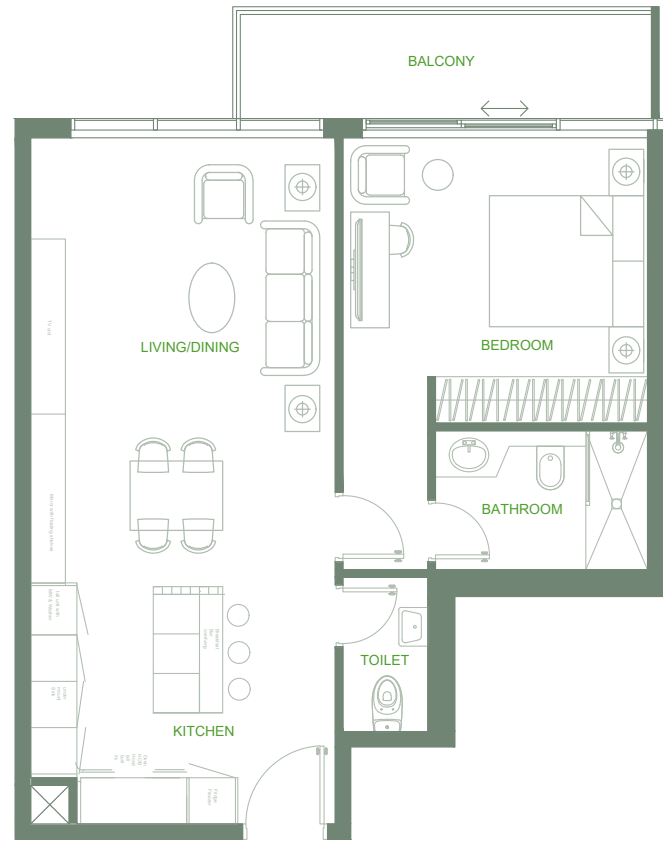
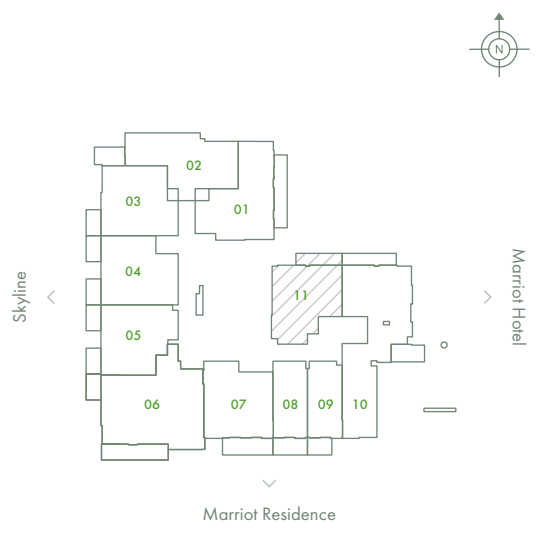
2 Bedrooms
Total Area: 1,395 sq.ft.
Street View



O Ten Floor Plan 9th - 10th floor

♦ *Series 11*

1 Bedroom
Total Area: 780 sq.ft.
Pool View





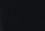
BUY | SELL | RENT | PROPERTY MANAGEMENT SERVICES

GET IN TOUCH WITH US

 **+971 56 818 8610**

 **info@homes4life.ae**

 **Head Office:**
Office 25 | Oasis Center | Sheikh Zayed Road | Dubai | +971 4 338 7300

 **Branch Office:**
Retail 1 | Safi Apartments | Town Square Dubai | Dubai | +971 4 398 1528