

THE S

INIMITABLY S

Floor Plan

4 BED UNIT PLAN

TYPE - A



SALEABLE AREA

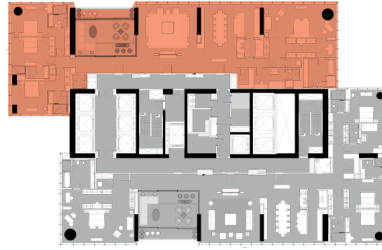
Suite Area - 4727.92 SQ. FT.

Balcony - 96.27 SQ. FT.

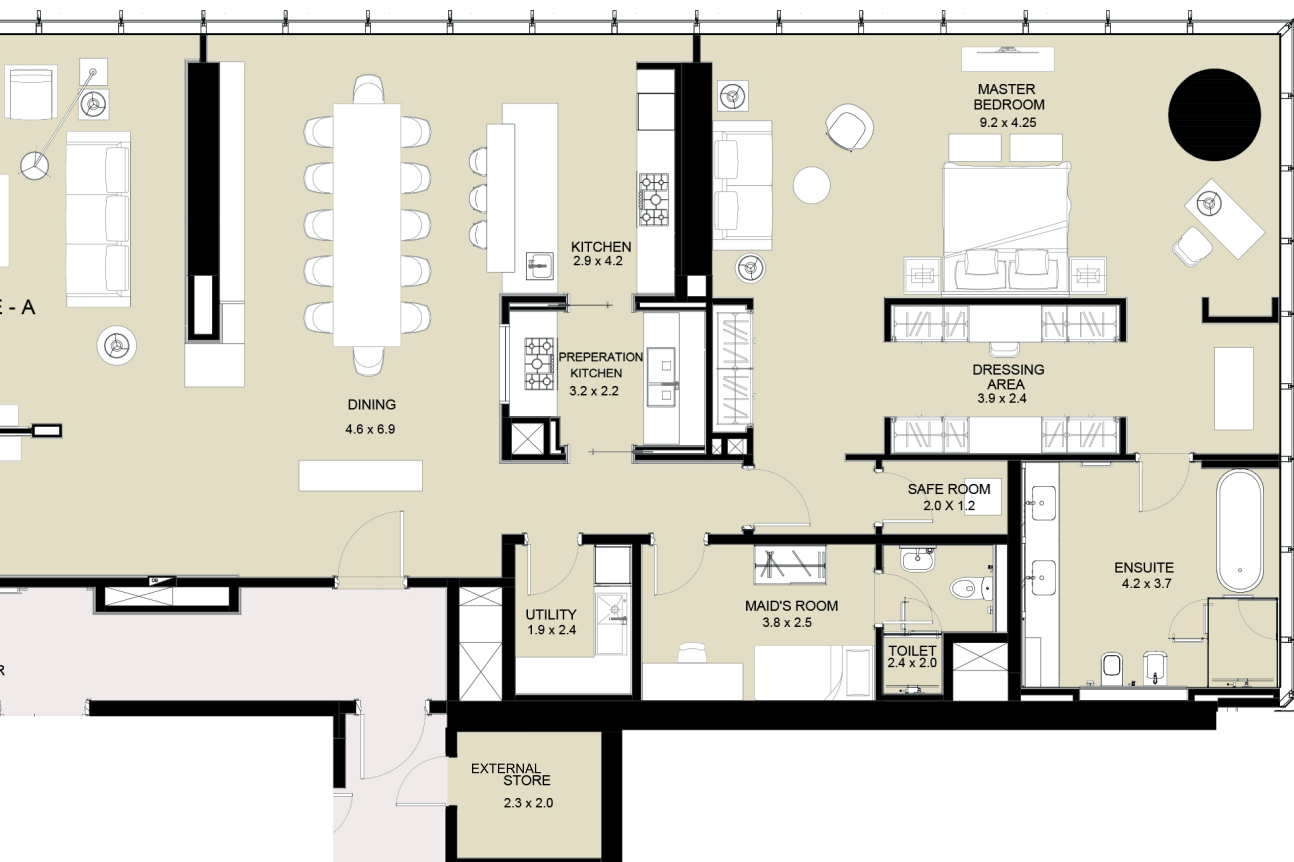
Store - 60.04 SQ. FT.

Total Saleable Area - 4884.23 SQ. FT.

SEA VIEW



SZR VIEW



Total Number of Units - 21

Note: Levels 42 & 43 are with full floor apartment units.

Disclaimer: 1. All dimensions are in metric, measured to wall finishes. 2. All materials, dimensions & drawings are approximate. 3. Information is subject to change without notice, at developer's absolute discretion. 4. Actual area may vary from the stated area. 5. Drawing are not to scale. 6. All images used are for illustrative purpose only and do not represent the actual size, features, specifications, fittings and furnishings. 7. The developer reserves the right to make revisions/ alterations, at its absolute discretion, without any liability whatsoever.

SOBHA
REALTY



BUY | SELL | RENT | PROPERTY MANAGEMENT SERVICES

GET IN TOUCH WITH US



+971 56 818 8610



info@homes4life.ae



Head Office:

Office 25 | Oasis Center | Sheikh Zayed Road | Dubai | +971 4 338 7300

Branch Office:

Retail 1 | Safi Apartments | Town Square Dubai | Dubai | +971 4 398 1528