



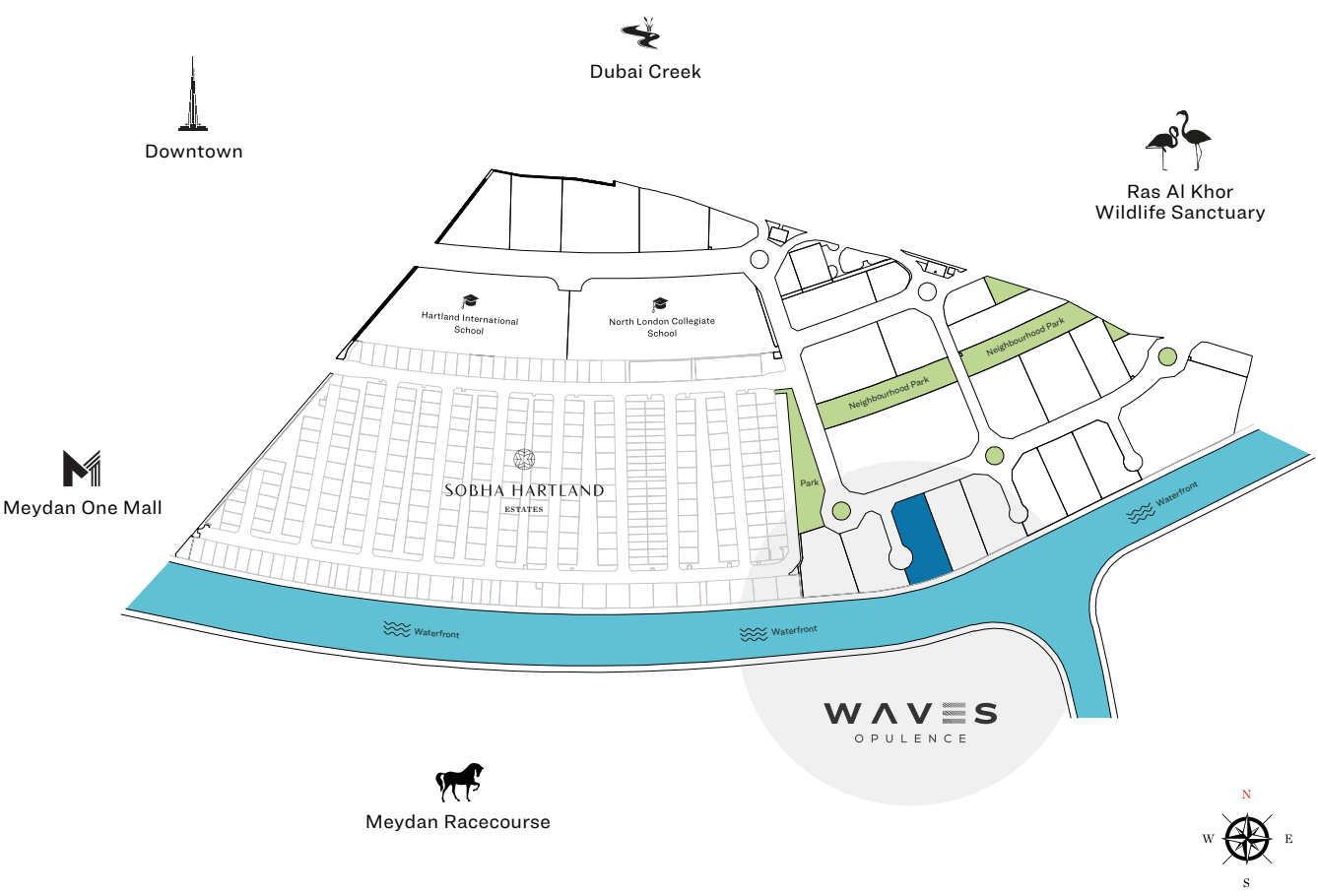
WAVES
OPULENCE



SOBHA HARTLAND

MASTER PLAN
FLOOR PLANS
RESIDENTIAL UNIT PLANS

LOCATION IN THE MASTER PLAN



APARTMENT FEATURES



Landmark views



Covered car parking



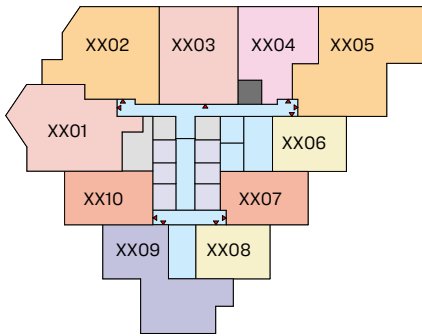
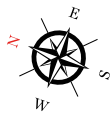
Fully fitted kitchens



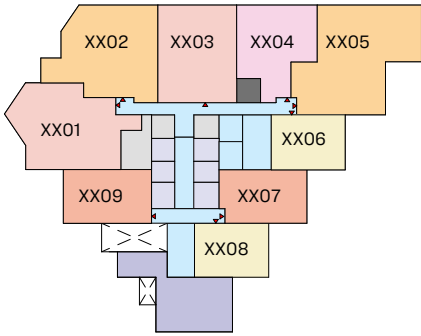
Bedroom wardrobe in all units

*Terms & Conditions apply

FLOOR PLAN LAYOUT



TYPICAL FLOOR PLAN
(10,12,14,16,18,22,24,26,28,30,32)_LOWER LEVEL



TYPICAL FLOOR PLAN
(11,13,15,17,19,23,25,27,29,31,33)_UPPER LEVEL

1 BED UNIT	2.5 BED UNIT	CIRCULATION	GARBAGE ROOM
1.5 BED UNIT	3 BED UNIT	LIFT	
2 BED UNIT	4 BED UNIT	SERVICES	

Disclaimer: 1. All dimensions are in metric, measured to wall finishes. 2. All materials, dimensions & drawings are approximate. 3. Information is subject to change without notice, at developer's absolute discretion. 4. Actual area may vary from the stated area. 5. Drawing are not to scale. 6. All images used are for illustrative purpose only and do not represent the actual size, features, specifications, fittings and furnishings. 7. The developer reserves the right to make revisions/ alterations, at its absolute discretion, without any liability whatsoever.

1 BEDROOM APARTMENT

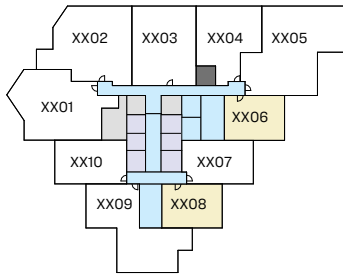
TYPE A (with powder room + balcony)

TOTAL SALEABLE AREA

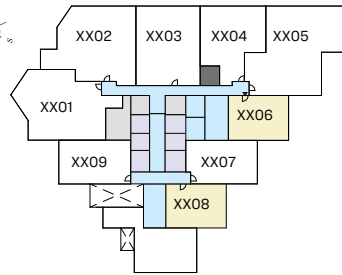
SUITE = 728.39 SQ.FT.

BALCONY = 70.18 SQ.FT.

TOTAL = 798.57 SQ.FT.

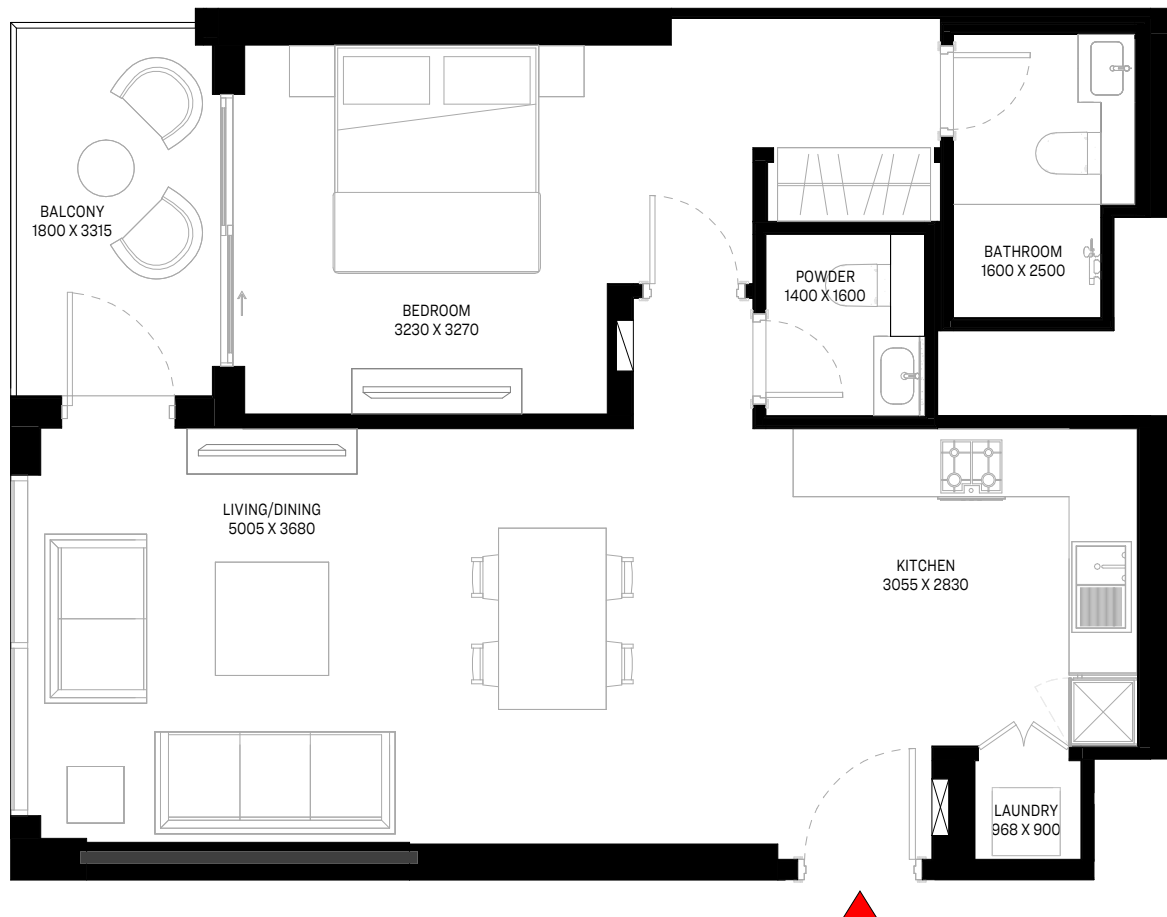


TYPICAL FLOOR PLAN
(10,12,14,16,18,22,24,26,28,30,32)_LOWER LEVEL



TYPICAL FLOOR PLAN
(11,13,15,17,19,23,25,27,29,31,33)_UPPER LEVEL

UNIT



List of unit numbers with this unit plan:

VIEWS

Hartland, Waterfront, Amenities

1006, 1008, 1106, 1108, 1206, 1208, 1306, 1308, 1406, 1408, 1506, 1508

Hartland, Waterfront

1606, 1608, 1706, 1708, 1806, 1808, 1906, 1908, 2206, 2208, 2306, 2308, 2406, 2408, 2506, 2508, 2606, 2608, 2706, 2708, 2806, 2808, 2906, 2908, 3006, 3008, 3106, 3108, 3206, 3208, 3306, 3308

Disclaimer: 1. All dimensions are in metric, measured to wall finishes. 2. All materials, dimensions & drawings are approximate. 3. Information is subject to change without notice, at developer's absolute discretion. 4. Actual area may vary from the stated area. 5. Drawing are not to scale. 6. All images used are for illustrative purpose only and do not represent the actual size, features, specifications, fittings and furnishings. 7. The developer reserves the right to make revisions/ alterations, at its absolute discretion, without any liability whatsoever.

1.5 BEDROOM APARTMENT

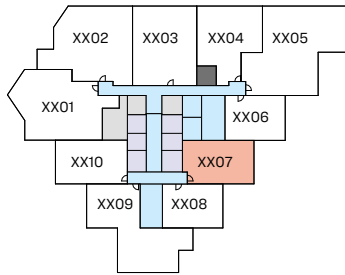
TYPE D (with study room + balcony)

TOTAL SALEABLE AREA

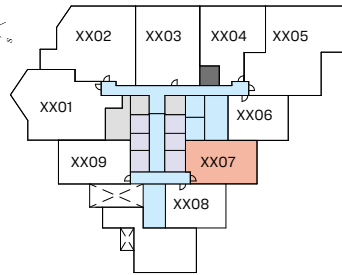
SUITE = 807.08 SQ.FT.

BALCONY = 87.83 SQ.FT.

TOTAL = 894.91 SQ.FT.

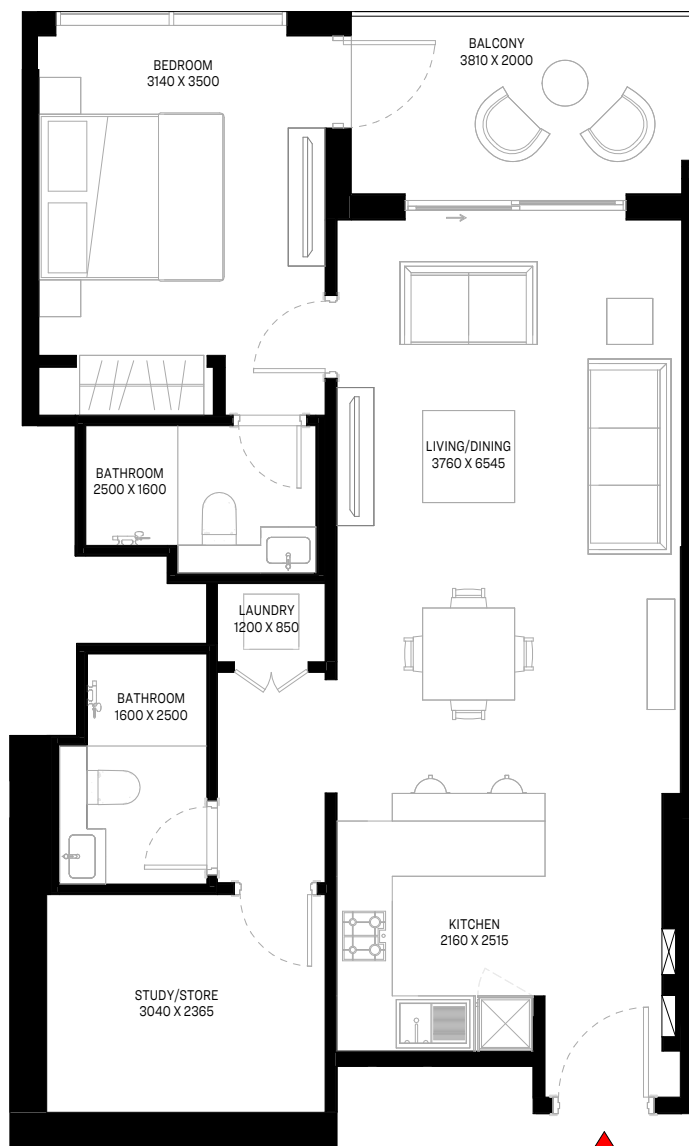


TYPICAL FLOOR PLAN
(10,12,14,16,18,22,24,26,28,30,32)_LOWER LEVEL



TYPICAL FLOOR PLAN
(11,13,15,17,19,23,25,27,29,31,33)_UPPER LEVEL

UNIT



List of unit numbers with this unit plan:

VIEWS

Hartland, Waterfront, Amenities
1007, 1107, 1207, 1307, 1407, 1507

Hartland, Waterfront
1607, 1707, 1807, 1907, 2207, 2307, 2407, 2507, 2607, 2707, 2807, 2907, 3007, 3107, 3207, 3307

Disclaimer: 1. All dimensions are in metric, measured to wall finishes. 2. All materials, dimensions & drawings are approximate. 3. Information is subject to change without notice, at developer's absolute discretion. 4. Actual area may vary from the stated area. 5. Drawing are not to scale. 6. All images used are for illustrative purpose only and do not represent the actual size, features, specifications, fittings and furnishings. 7. The developer reserves the right to make revisions/ alterations, at its absolute discretion, without any liability whatsoever.

1.5 BEDROOM APARTMENT

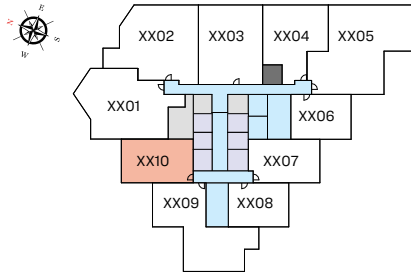
TYPE D1 (with study room + balcony)

TOTAL SALEABLE AREA

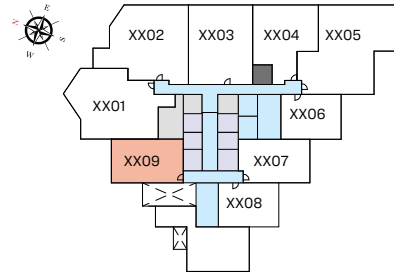
SUITE = 804.60 SQ.FT.

BALCONY = 88.37 SQ.FT.

TOTAL = 892.97 SQ.FT.

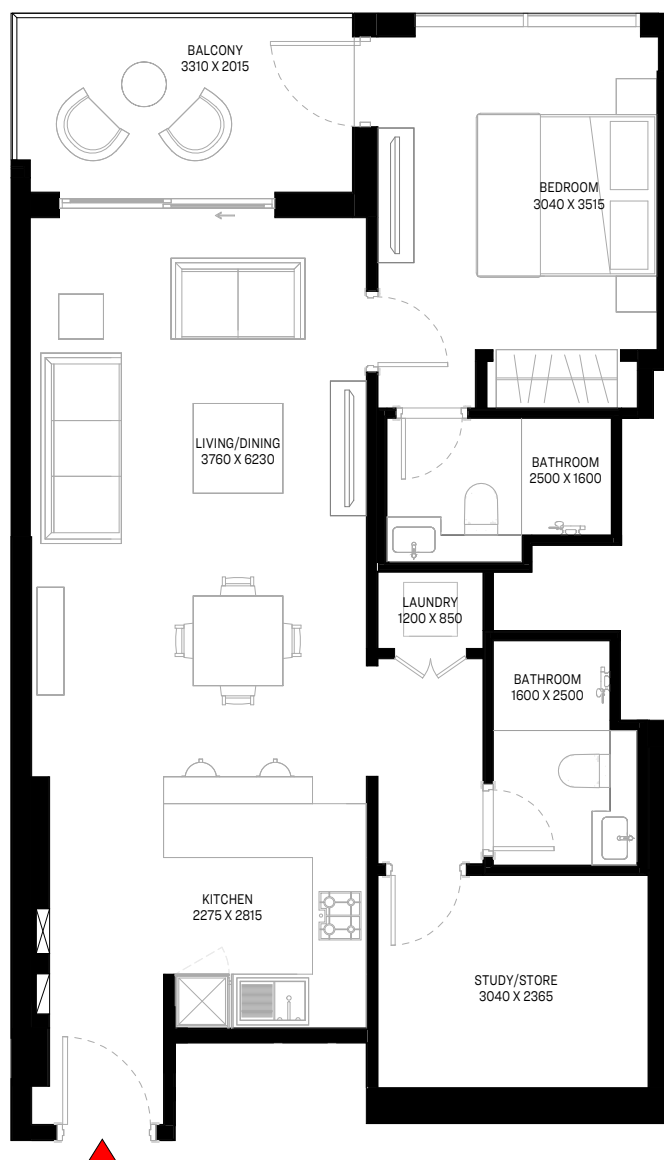
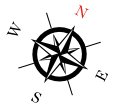


TYPICAL FLOOR PLAN
(10,12,14,16,18,22,24,26,28,30,32)_LOWER LEVEL



TYPICAL FLOOR PLAN
(11,13,15,17,19,23,25,27,29,31,33)_UPPER LEVEL

UNIT



List of unit numbers with this unit plan:

VIEWS

Hartland, Downtown

1010, 1109, 1210, 1309, 1410, 1509, 1610, 1709, 1810, 1909, 2210, 2309, 2410, 2509, 2610, 2709, 2810, 2909, 3010, 3109, 3210, 3309

Disclaimer: 1. All dimensions are in metric, measured to wall finishes. 2. All materials, dimensions & drawings are approximate. 3. Information is subject to change without notice, at developer's absolute discretion. 4. Actual area may vary from the stated area. 5. Drawing are not to scale. 6. All images used are for illustrative purpose only and do not represent the actual size, features, specifications, fittings and furnishings. 7. The developer reserves the right to make revisions/ alterations, at its absolute discretion, without any liability whatsoever.

2 BEDROOM APARTMENT

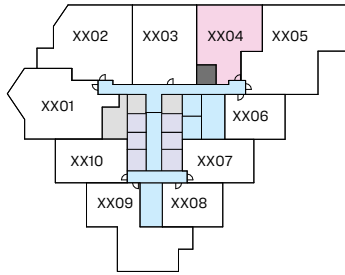
TYPE A (with powder room + balcony)

TOTAL SALEABLE AREA

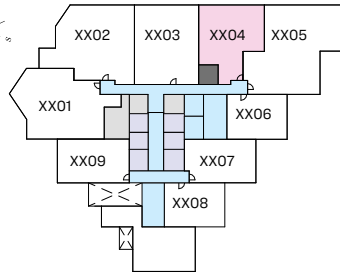
SUITE = 1124.83 SQ.FT.

BALCONY = 65.98 SQ.FT.

TOTAL = 1190.81 SQ.FT.

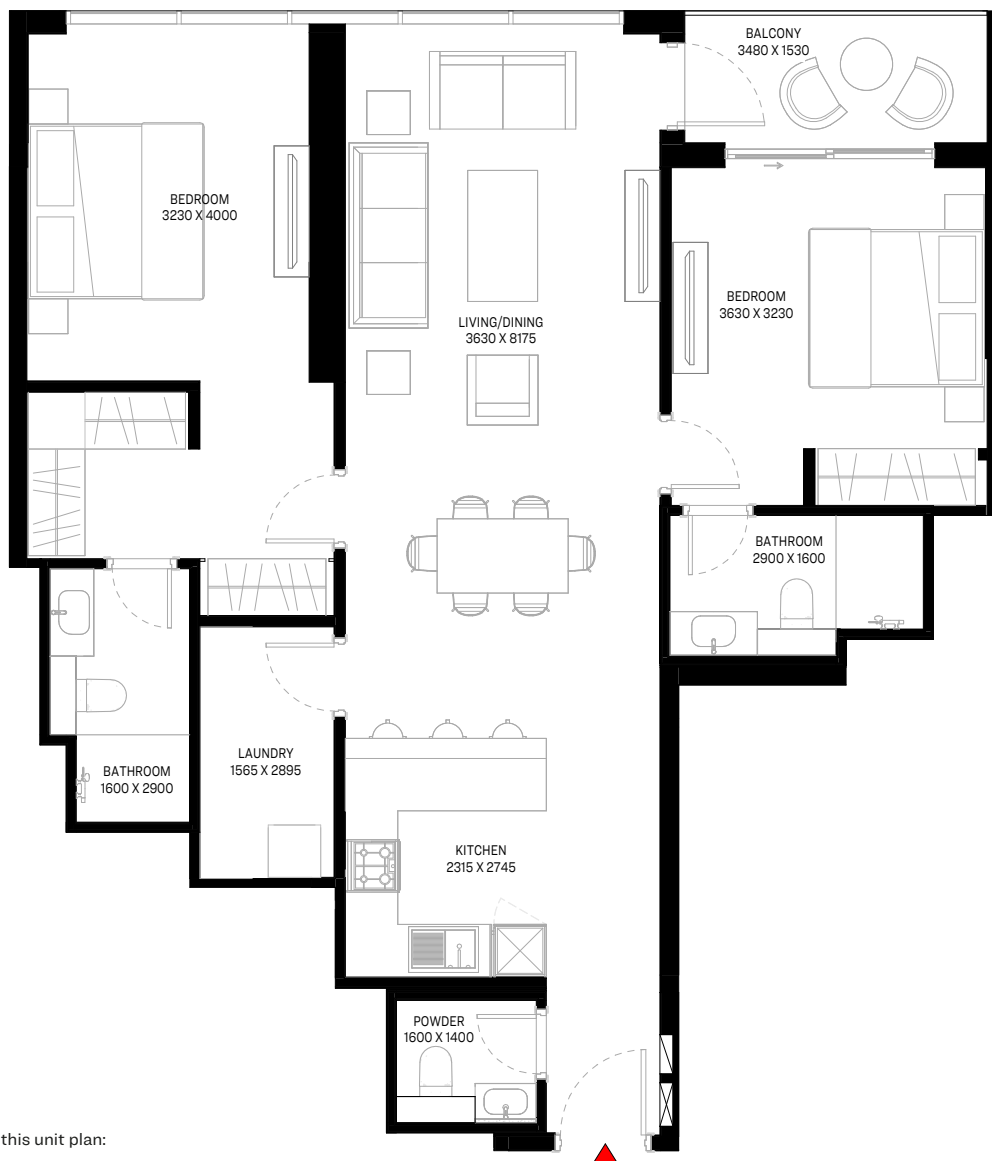


TYPICAL FLOOR PLAN
(10,12,14,16,18,22,24,26,28,30,32)_LOWER LEVEL



TYPICAL FLOOR PLAN
(11,13,15,17,19,23,25,27,29,31,33)_UPPER LEVEL

UNIT



List of unit numbers with this unit plan:

VIEWS

Hartland, Waterfront

1004,1104,1204,1304,1404,1504

Hartland, Waterfront, Ras Al Khor Sanctuary

1604, 1704, 1804, 1904, 2204, 2304, 2404, 2504, 2604, 2704, 2804, 2904, 3004, 3104, 3204, 3304

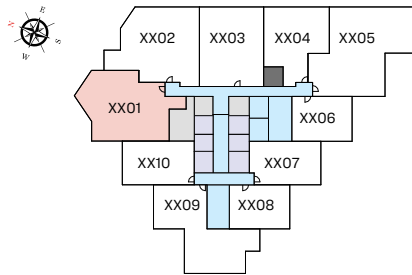
Disclaimer: 1. All dimensions are in metric, measured to wall finishes. 2. All materials, dimensions & drawings are approximate. 3. Information is subject to change without notice, at developer's absolute discretion. 4. Actual area may vary from the stated area. 5. Drawing are not to scale. 6. All images used are for illustrative purpose only and do not represent the actual size, features, specifications, fittings and furnishings. 7. The developer reserves the right to make revisions/ alterations, at its absolute discretion, without any liability whatsoever.

2.5 BEDROOM APARTMENT

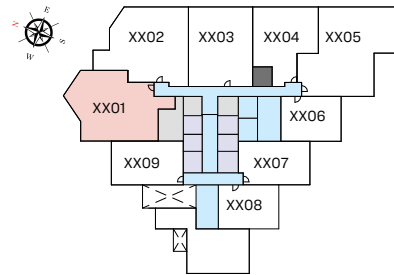
TYPE D (with study room, maid room and powder room + balcony)

TOTAL SALEABLE AREA

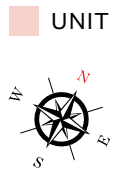
SUITE = 1455.39 SQ.FT.
BALCONY = 154.79 SQ.FT.
TOTAL = 1610.18 SQ.FT.



TYPICAL FLOOR PLAN
(10,12,14,16,18,22,24,26,28,30,32)_LOWER LEVEL



TYPICAL FLOOR PLAN
(11,13,15,17,23,25,27,31,33)_UPPER LEVEL



List of unit numbers with this unit plan:

VIEWS

Hartland, Downtown
1001, 1101, 1201, 1301, 1401, 1501

Hartland, Downtown, Ras Al Khor Sanctuary
1601, 1701, 1801, 2201, 2301, 2401, 2501, 2601, 2701, 2801, 3001, 3101, 3201, 3301

Disclaimer: 1. All dimensions are in metric, measured to wall finishes. 2. All materials, dimensions & drawings are approximate. 3. Information is subject to change without notice, at developer's absolute discretion. 4. Actual area may vary from the stated area. 5. Drawing are not to scale. 6. All images used are for illustrative purpose only and do not represent the actual size, features, specifications, fittings and furnishings. 7. The developer reserves the right to make revisions/ alterations, at its absolute discretion, without any liability whatsoever.

2.5 BEDROOM APARTMENT

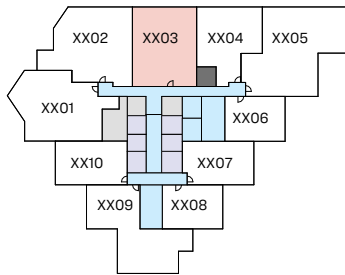
TYPE E (with study room, maid room and powder room + balcony)

TOTAL SALEABLE AREA

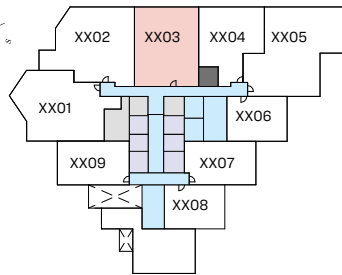
SUITE = 1437.95 SQ.FT.

BALCONY = 63.83 SQ.FT.

TOTAL = 1501.78 SQ.FT.



TYPICAL FLOOR PLAN
(10,12,14,16,18,22,24,26,28,30,32)_LOWER LEVEL



TYPICAL FLOOR PLAN
(11,13,15,17,19,23,25,27,29,31,33)_UPPER LEVEL

UNIT



List of unit numbers with this unit plan:

VIEWS

Hartland, Waterfront

1003, 1103, 1203, 1303, 1403, 1503

Hartland, Waterfront, Ras Al Khor Sanctuary

1603, 1703, 1803, 1903, 2203, 2303, 2403, 2503, 2603, 2703, 2803, 2903, 3003, 3103, 3203, 3303

Disclaimer: 1. All dimensions are in metric, measured to wall finishes. 2. All materials, dimensions & drawings are approximate. 3. Information is subject to change without notice, at developer's absolute discretion. 4. Actual area may vary from the stated area. 5. Drawing are not to scale. 6. All images used are for illustrative purpose only and do not represent the actual size, features, specifications, fittings and furnishings. 7. The developer reserves the right to make revisions/ alterations, at its absolute discretion, without any liability whatsoever.

3 BEDROOM APARTMENT

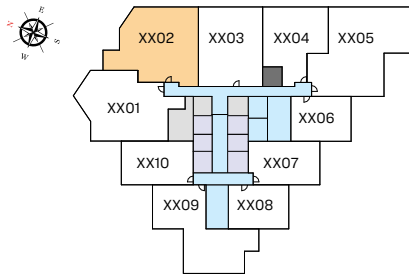
TYPE A (with maid room and powder room + balcony)

TOTAL SALEABLE AREA

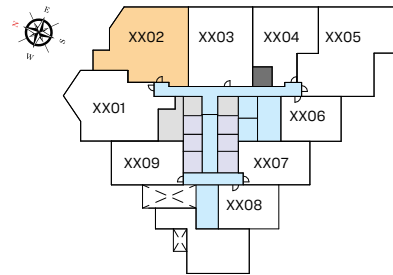
SUITE = 1659.47 SQ.FT.

BALCONY = 87.62 SQ.FT.

TOTAL = 1747.09 SQ.FT.



TYPICAL FLOOR PLAN
(10,14,16,22,26,28,32)_LOWER LEVEL



TYPICAL FLOOR PLAN
(11,13,15,17,19,23,25,27,29,31,33)_UPPER LEVEL

UNIT



List of unit numbers with this unit plan:

VIEWS

Hartland, Waterfront

1002, 1102, 1302, 1402, 1502

Hartland, Waterfront, Ras Al Khor Sanctuary

1602, 1702, 1902, 2202, 2302, 2502, 2602, 2702, 2802, 2902, 3102, 3202, 3302

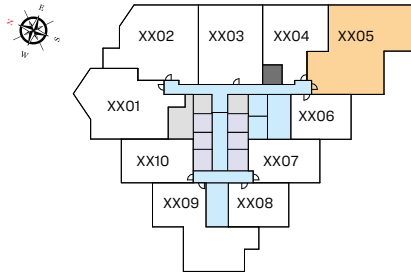
Disclaimer: 1. All dimensions are in metric, measured to wall finishes. 2. All materials, dimensions & drawings are approximate. 3. Information is subject to change without notice, at developer's absolute discretion. 4. Actual area may vary from the stated area. 5. Drawing are not to scale. 6. All images used are for illustrative purpose only and do not represent the actual size, features, specifications, fittings and furnishings. 7. The developer reserves the right to make revisions/ alterations, at its absolute discretion, without any liability whatsoever.

3 BEDROOM APARTMENT

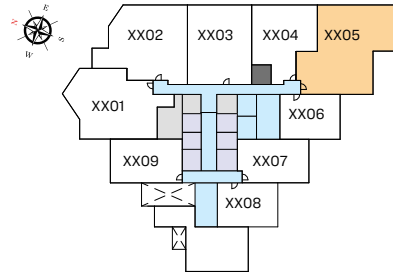
TYPE C (with maid room and powder room + balcony)

TOTAL SALEABLE AREA

SUITE = 1914.68 SQ.FT.
BALCONY = 155.43 SQ.FT.
TOTAL = 2070.11 SQ.FT.



TYPICAL FLOOR PLAN
(10,12,14,16,18,22,24,26,28,30,32)_LOWER LEVEL



TYPICAL FLOOR PLAN
(11,13,15,17,19,23,25,27,29,31,33)_UPPER LEVEL

UNIT



List of unit numbers with this unit plan:

VIEWS

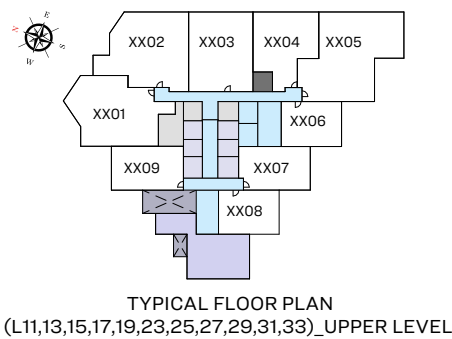
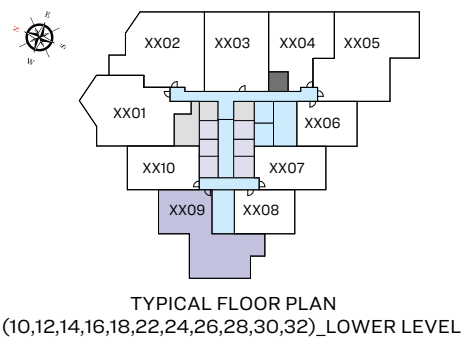
Hartland, Waterfront, Amenities
1005, 1105, 1205, 1305, 1405, 1505

Hartland, Waterfront, Ras Al Khor Sanctuary
1605, 1705, 1805, 1905, 2205, 2305, 2405, 2505, 2605, 2705, 2805, 2905, 3005, 3105, 3205, 3305

Disclaimer: 1. All dimensions are in metric, measured to wall finishes. 2. All materials, dimensions & drawings are approximate. 3. Information is subject to change without notice, at developer's absolute discretion. 4. Actual area may vary from the stated area. 5. Drawing are not to scale. 6. All images used are for illustrative purpose only and do not represent the actual size, features, specifications, fittings and furnishings. 7. The developer reserves the right to make revisions/ alterations, at its absolute discretion, without any liability whatsoever.

4 BEDROOM DUPLEX APARTMENT
TYPE A (with maid room and powder room + balcony)

TOTAL SALEABLE AREA
SUITE = 2473.65 SQ.FT.
BALCONY = 251.01 SQ.FT.
TOTAL = 2724.66 SQ.FT.



LOWER LEVEL



UPPER LEVEL

List of unit numbers with this unit plan:

VIEWS

Hartland, Downtown, Waterfront, Amenities
1009, 1209, 1409

Hartland, Downtown, Waterfront
1609, 1809, 2209, 2409, 2609, 2809, 3009, 3209

Disclaimer: 1. All dimensions are in metric, measured to wall finishes. 2. All materials, dimensions & drawings are approximate. 3. Information is subject to change without notice, at developer's absolute discretion. 4. Actual area may vary from the stated area. 5. Drawing are not to scale. 6. All images used are for illustrative purpose only and do not represent the actual size, features, specifications, fittings and furnishings. 7. The developer reserves the right to make revisions/ alterations, at its absolute discretion, without any liability whatsoever.

SOBHA
REALTY



BUY | SELL | RENT | PROPERTY MANAGEMENT SERVICES

GET IN TOUCH WITH US



+971 56 818 8610



info@homes4life.ae



Head Office:

Office 25 | Oasis Center | Sheikh Zayed Road | Dubai | +971 4 338 7300

Branch Office:

Retail 1 | Safi Apartments | Town Square Dubai | Dubai | +971 4 398 1528