



BLUEWATERS *bay*

DESIGNED FOR YOUR
NATURAL TIDE

CONTENTS

| | |
|-------------------|----|
| ABOUT MERAAS | 04 |
| LOCATION MAP | 06 |
| BLUEWATERS ISLAND | 08 |
| AMENITIES | 10 |
| VISION | 12 |
| ABOUT THE PROJECT | 18 |
| FLOOR PLANS | 24 |





ABOUT MERAAS

Meraas has illustrated its position as a leading master developer by creating and consistently delivering residential developments that strengthen Dubai's position as a global real estate investment destination of choice. Meraas has built a powerful legacy of developing creative spaces and establishing recognisable landmarks, leading to enriching lifestyle experiences for its residents.

Its cutting-edge portfolio comprises of leading developments across waterfront, urban, and suburban locations in Dubai, such as City Walk Residences, Bluewaters Residences, Nikki Beach Residences, BVLGARI Residences and Port de La Mer, to name but a few. Meraas is synonymous with sophistication and innovation and offers best in class residential developments that appeal to a discerning, global customer.

BLUE WATERS bay

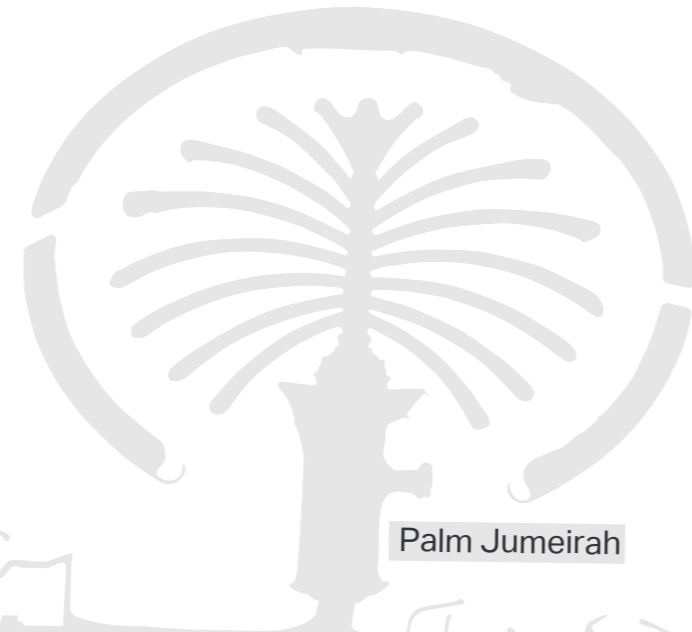


Ain Dubai

La Vie

1/JBR

JBR



Palm Jumeirah

Burj Al Arab



Madinat Jumeirah

Jumeirah Beach Hotel



Jumeirah Street

BVLGARI
RESORT & RESIDENCES
DUBAI



Sheikh Zayed Road

Abu Dhabi

Dubai Knowledge Park

King Salman Bin Abdulaziz Al Saud Street

Hessa Street

Al Zahra Hospital Dubai

Mall of the Emirates

Umm Suqeim Street

Madinat Jumeirah Living

Al Wasl Road

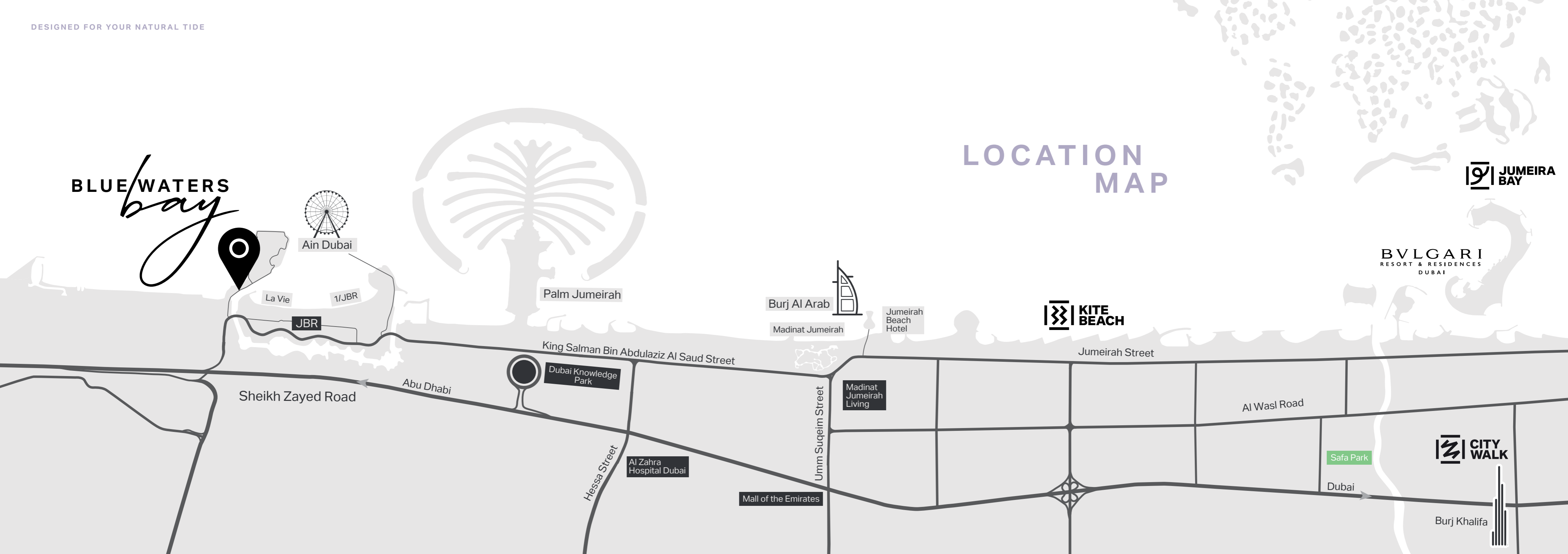
Safa Park

Dubai



Burj Khalifa

LOCATION MAP





BLUEWATERS ISLAND

Dubai is a city with many destinations that are recognised globally, but none are quite as iconic as Bluewaters Island. Home to Ain Dubai, the world's largest observation wheel, Caesars Palace Dubai, the first and only one outside of the United States, as well as countless dining, shopping, leisure and entertainment attractions.

Bluewaters Island is situated adjacent to Jumeirah Beach Residence, Palm Jumeirah and Dubai Marina, placing it in one of the most popular and vibrant areas of the city.

AMENITIES





FITNESS CENTRE



COMMUNITY GARDENS &
KIDS PLAY AREA



VISION

Inspired by the Dubai lifestyle, Bluewaters Bay's contemporary architectural design and one-of-a-kind location evoke a true sense of grandeur, which has become synonymous with our beloved city.

With its open-plan apartment layouts, Bluewaters Bay has been designed to let the inside-out and the outside-in, inspiring a lifestyle that's lived in harmony with the surrounding world – from the bright lights of Bluewaters to the sparkling waters of the Arabian Gulf. Creating a home that combines the calmness and solitude of a seaside location, with the glamour and energy of a bustling destination.

A combination that is unique and embodied perfectly by Bluewaters Bay.





ABOUT THE PROJECT

Located in the bay between Bluewaters Island and The Beach at JBR, residents will have the luxury of direct access to both destinations through the promenade. Whether you would like to have a relaxing day on the beach or dinner at an award-winning restaurant, the options are endless.

The main access point for Bluewaters Bay is directly from Bluewaters Bridge, which is linked to Sheikh Zayed Road. This vital connection makes it convenient for residents to head towards Bluewaters Island, with an easy path back towards Dubai's most major highway.

In addition to the main access, another access point is provided from the street level, which gives residents an alternative route to the Dubai Marina neighbourhood without the need to drive to Sheikh Zayed Road to reach this extremely popular area.

Rising high and taking a prominent place in the Dubai Marina and JBR skyline, Bluewaters Bay stands out given its spectacular design. The glass façade and expansive terraces give residents a sense of bringing the inside-out and the outside-in, to become one with the serene seaside surroundings.

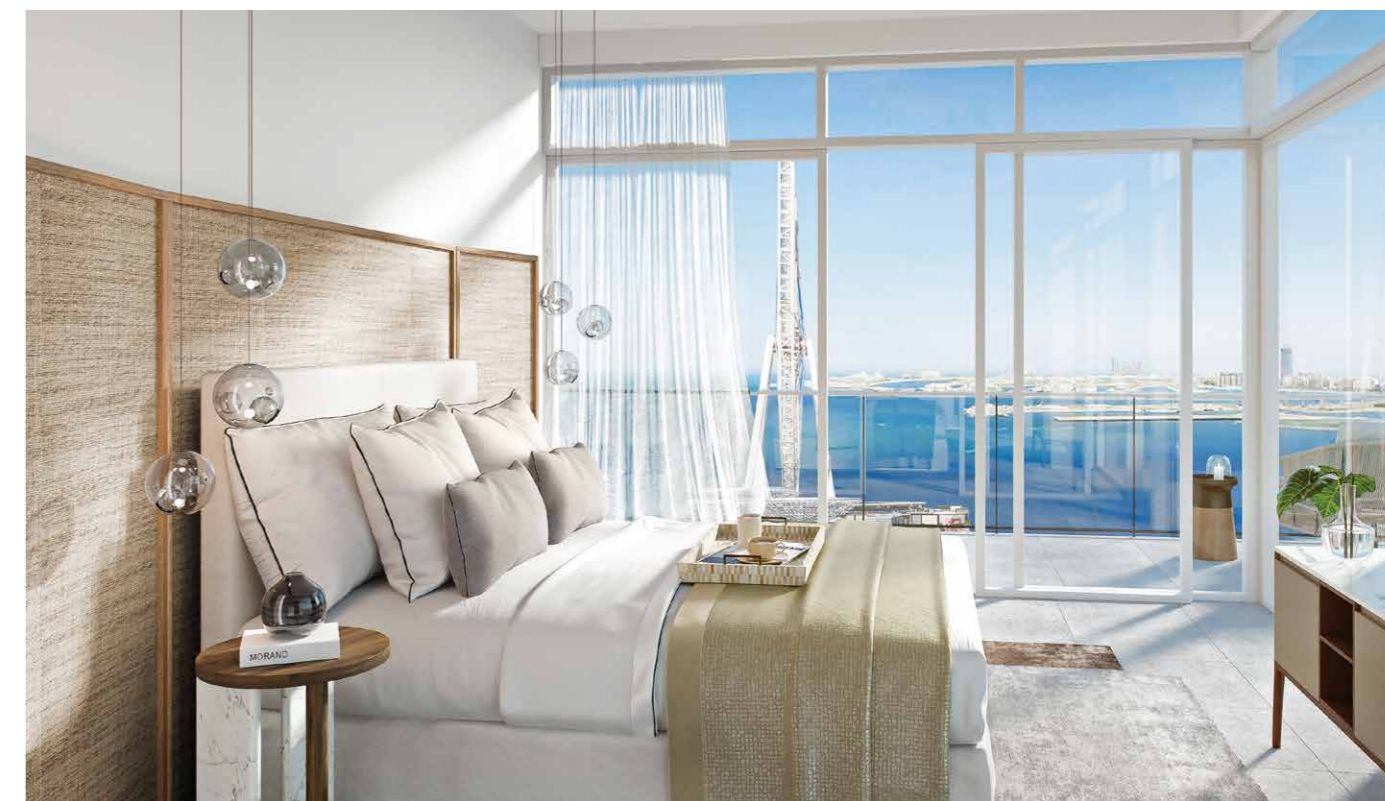
The entrance experience takes residents through an impressive double-height lobby, with views towards to the glittering lights of the city skyline. On the first floor, one can enjoy a game of tennis, work out in a well-equipped fitness centre or dive into an infinity pool with views towards Bluewaters Island and Ain Dubai on one side, with the beach and skyline on the other.





The interior spaces allow plentiful natural light to enter, which further accentuates the carefully curated finishes. In addition to the meticulous attention to detail, the spacious interior layouts are specifically designed to maximise functionality.

On the ground level, the promenade connects to a lush linear park, which will be a welcoming green area for residents and visitors to enjoy.






BUY | SELL | RENT | PROPERTY MANAGEMENT SERVICES

GET IN TOUCH WITH US

 **+971 56 818 8610**

 **info@homes4life.ae**

 **Head Office:**
Office 25 | Oasis Center | Sheikh Zayed Road | Dubai | +971 4 338 7300

Branch Office:
Retail 1 | Safi Apartments | Town Square Dubai | Dubai | +971 4 398 1528