



# Viewz

BY **DANUBE**

FURNISHED BY



OFFICIAL PARTNER

# Dubai's First Iconic Towers

with

## ASTON MARTIN Furnished Interiors



OFFICIAL PARTNER

1) All Information, materials, plans and amenities are approximate and provided for illustrative purposes only. The developer reserves the right to make revisions to the floor plans and any features, materials, dimensions, drawings, and amenities of the project without notice.  
2) Units areas, actual dimensions, layout, location, specifications of balcony, door, wardrobe or other fixtures may vary floor to floor and between units and are subject to revision by the developer.  
3) Furniture and electric devices will not be provided by the developer, unless specified otherwise in the Unit Sale Purchase Agreement.

**FLOOR : 2 - 21 (Typ)**

VIEWZ 1    VIEWZ 2

**FLOOR : 23**

VIEWZ 1    VIEWZ 2

**FLOOR : 24 - 35 (Typ)**

VIEWZ 1    VIEWZ 2

BALCONY  
4.13 X 1.88

STUDIO  
4.10 X 5.43

PANTRY  
1.85 X 2.40

BATH  
2.25 X 1.75

## STUDIO TYPE - A

**AREA in Sq.Ft :**

Apartment	335 to 336
Balcony	66 to 84
<b>Total</b>	<b>401 to 420</b>

**UNITS in VIEWZ 1 :**

FLOOR :	UNIT Nos :
2 - 21 (Typ)	(204-205) (#209-#210) (214-215) to (2104-2105) (#2109-#2110) (2114-2115)
23	(2303) (#2306-#2307) (2310)
24 - 35 (Typ)	(2403-2404) (#2408-#2409) (2413-2414) to (3503-3504) (#3508-#3509) (3513-3514)

**UNITS in VIEWZ 2 :**

FLOOR :	UNIT Nos :
2 - 21 (Typ)	(204-205) (#209-#210) (214-215) to (2104-2105) (#2109-#2110) (2114-2115)
23	(2303) (#2306-#2307) (2310)
24 - 35 (Typ)	(2403-2404) (#2408-#2409) (2413-2414) to (3503-3504) (#3508-#3509) (3513-3514)

# Balcony Area in 84 Sq.Ft

**FLOOR : 2 - 21 (Typ)**

VIEWZ 1    VIEWZ 2

**FLOOR : 23**

VIEWZ 1    VIEWZ 2

**FLOOR : 24 - 35 (Typ)**

VIEWZ 1    VIEWZ 2

BALCONY  
7.10 X 1.88

BEDROOM  
3.55 X 3.97

LIVING / DINING  
3.55 X 5.27

OFFICE  
1.66 X 2.12

BATH  
1.95 X 2.55

TOILET  
1.65 X 1.65

FOYER  
1.19 X 1.70

KITCHEN  
2.35 X 2.50

## 1 BEDROOM TYPE - A

**AREA in Sq.Ft :**

Apartment	594
Balcony	143
<b>Total</b>	<b>737</b>

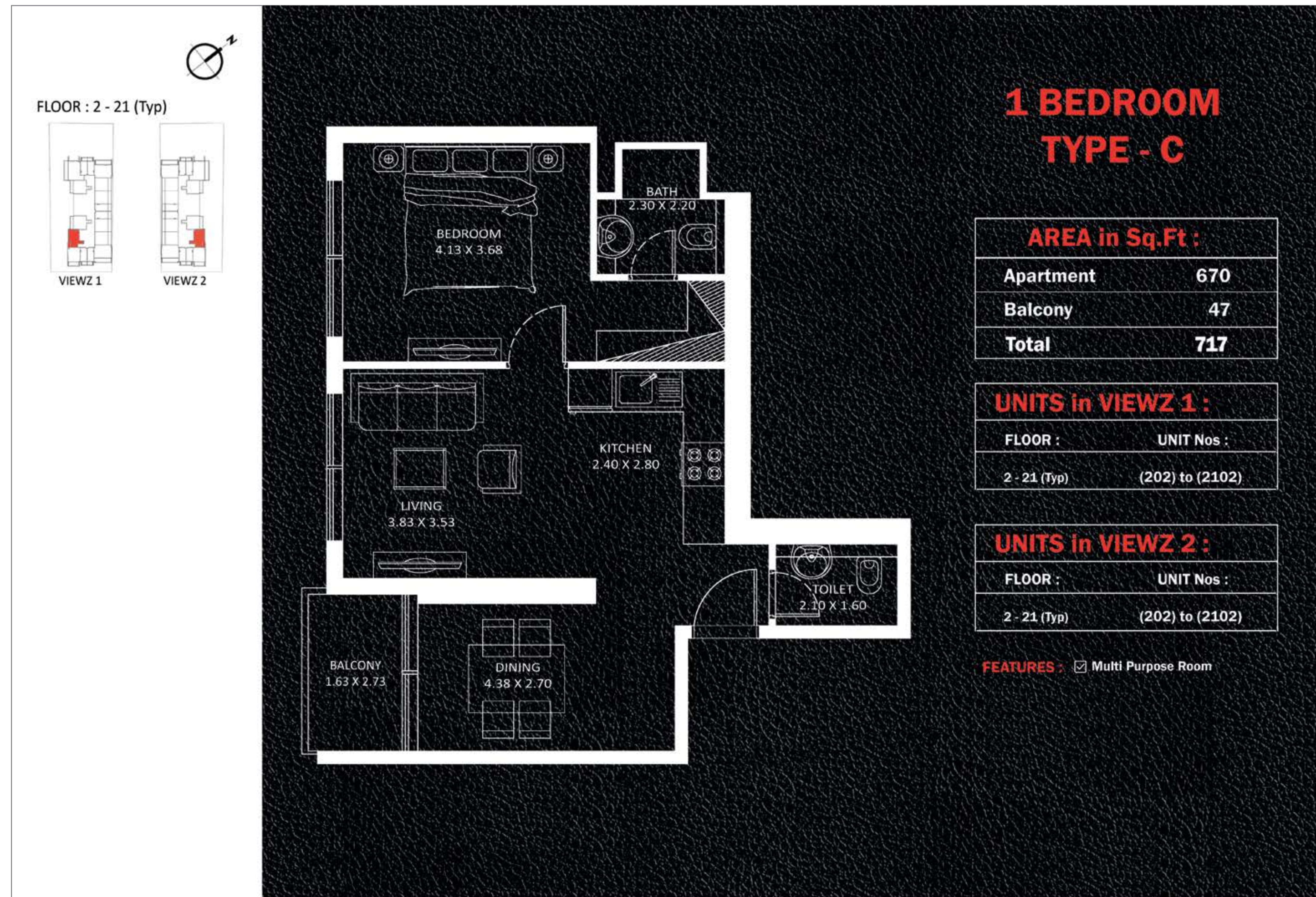
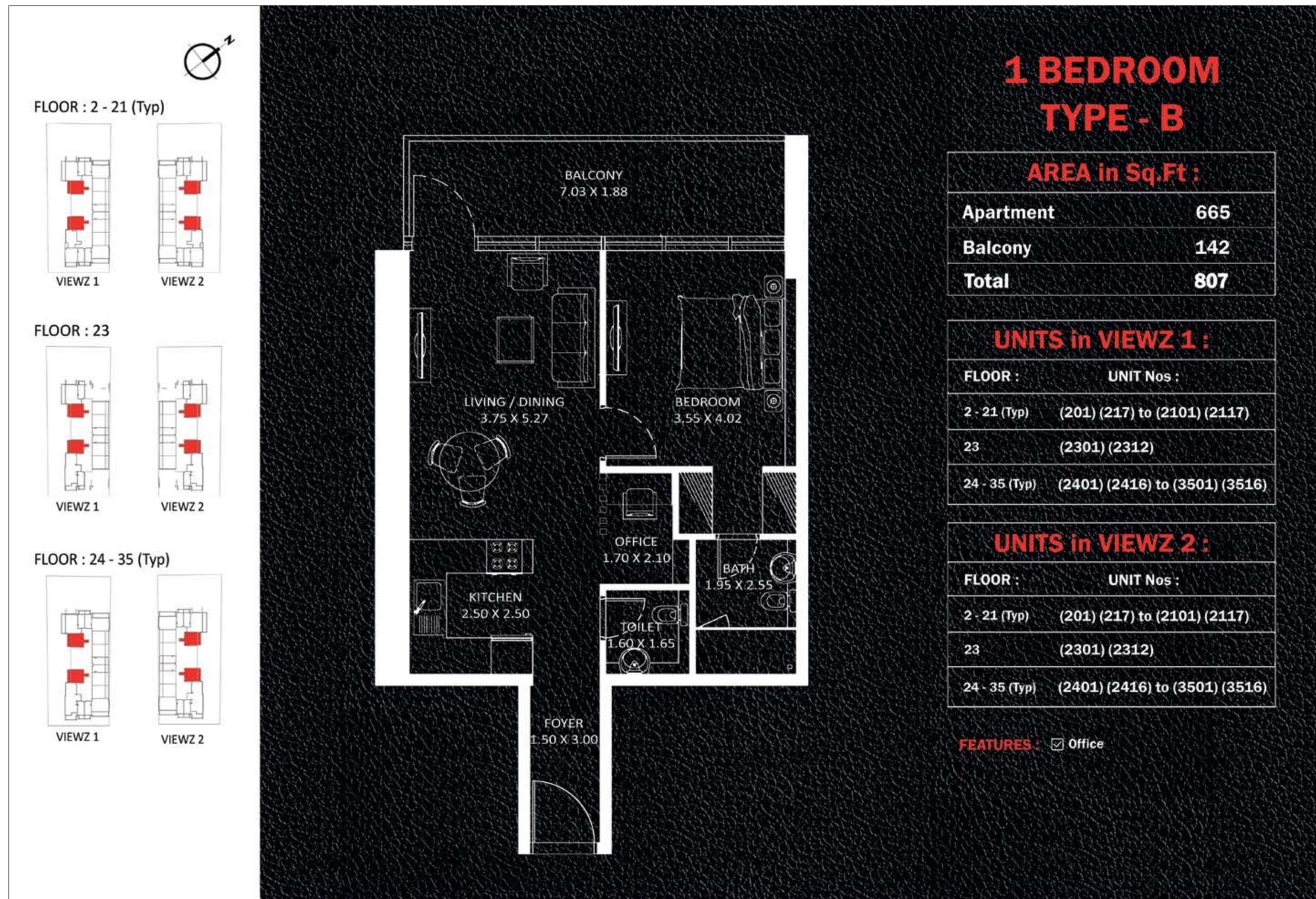
**UNITS in VIEWZ 1 :**

FLOOR :	UNIT Nos :
2 - 21 (Typ)	(207-208)(211-212) to (2107-2108)(2111-2112)
23	(2304-2305) (2308-2309)
24 - 35 (Typ)	(2406-2407) (2410-2411) to (3506-3507) (3510-3511)

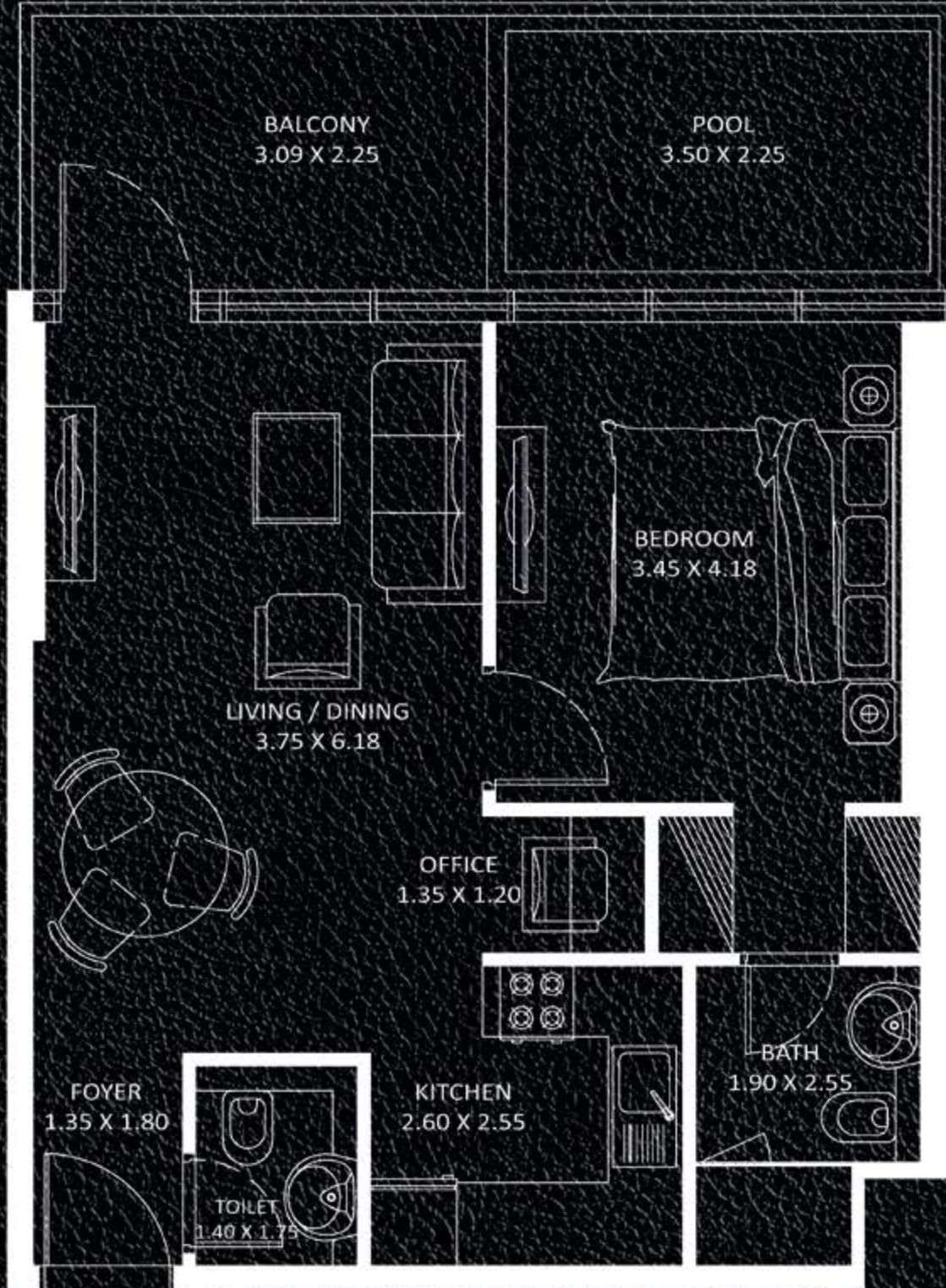
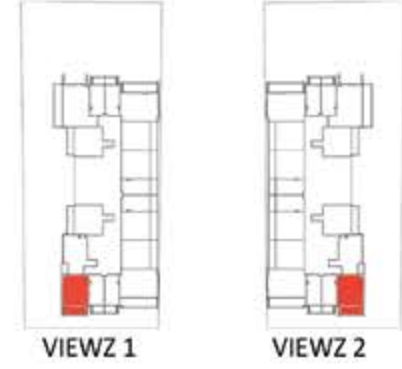
**UNITS in VIEWZ 2 :**

FLOOR :	UNIT Nos :
2 - 21 (Typ)	(207-208)(211-212) to (2107-2108)(2111-2112)
23	(2304-2305) (2308-2309)
24 - 35 (Typ)	(2406-2407) (2410-2411) to (3506-3507) (3510-3511)

**FEATURES :**  Office



FLOOR : 2 - 21 (Typ)



## PRESIDENTIAL SUITE TYPE - D

**AREA in Sq.Ft :**

Apartment	616
Balcony	147
<b>Total</b>	<b>763</b>

**UNITS in VIEWZ 1 :**

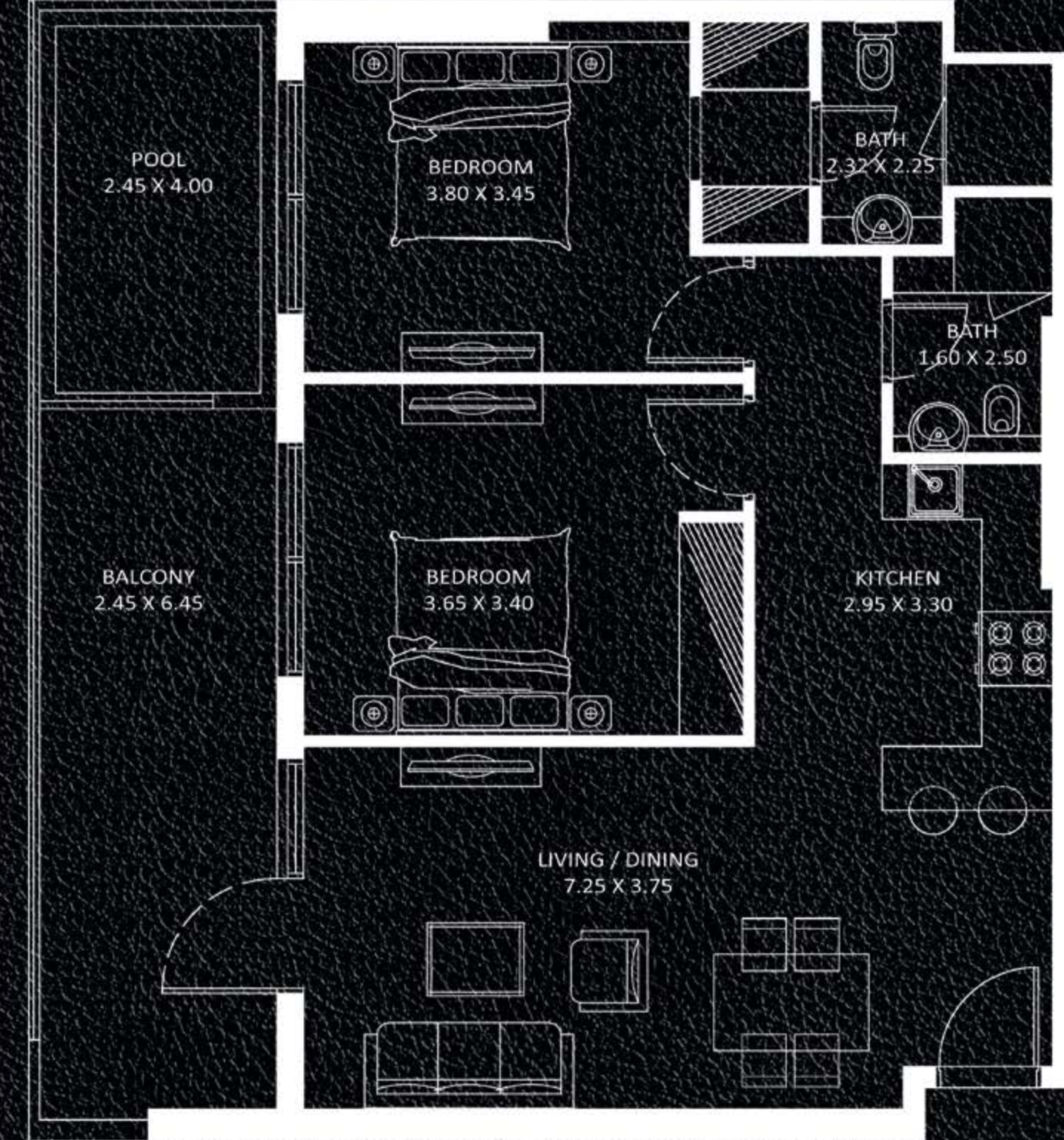
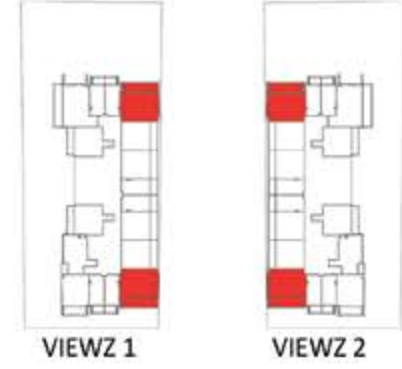
FLOOR :	UNIT Nos :
2 - 21 (Typ)	(203) to (2103)

**UNITS in VIEWZ 2 :**

FLOOR :	UNIT Nos :
2 - 21 (Typ)	(203) to (2103)

**FEATURES :**  Pool  Office

FLOOR : 2 - 21 (Typ)



## 2 BEDROOM TYPE - A

**AREA in Sq.Ft :**

Apartment	801
Balcony	250 to 260
<b>Total</b>	<b>1,051 to 1,061</b>

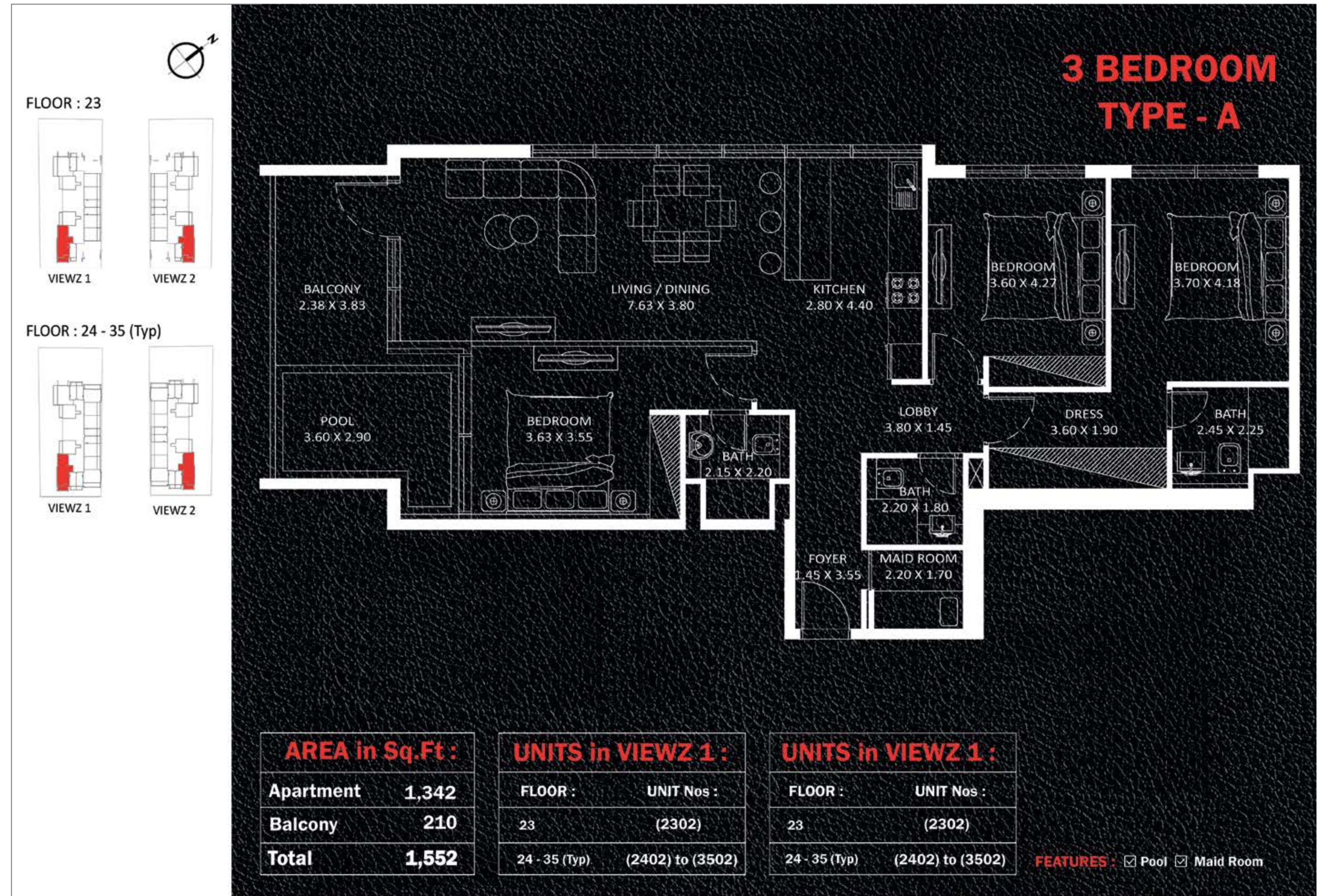
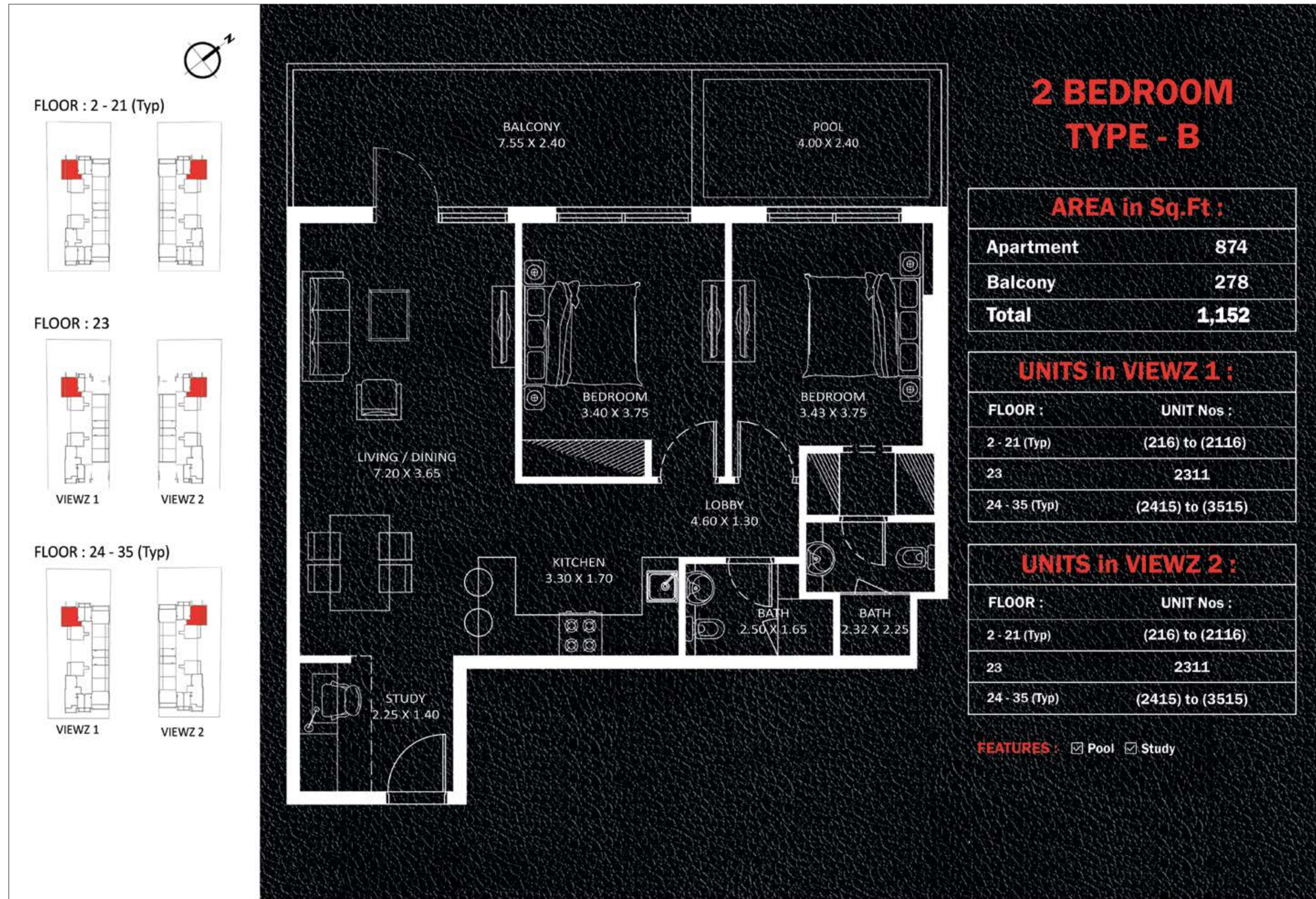
**UNITS in VIEWZ 1 :**

FLOOR :	UNIT Nos :
2 - 21 (Typ)	(206) (213) to (2106) (2113)
24 - 35 (Typ)	(2405) (2412) to (3505) (3512)

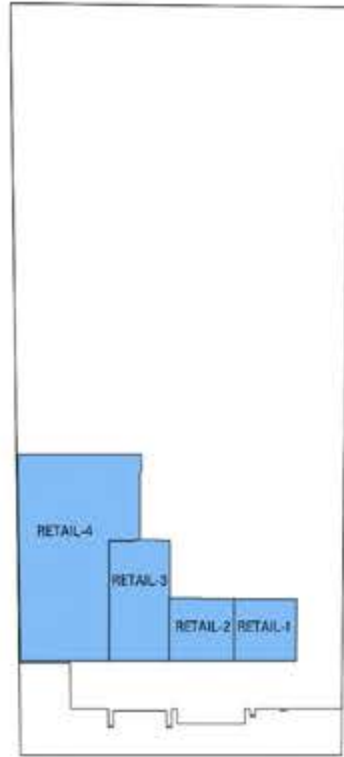
**UNITS in VIEWZ 2 :**

FLOOR :	UNIT Nos :
2 - 21 (Typ)	(206) (213) to (2106) (2113)
24 - 35 (Typ)	(2405) (2412) to (3505) (3512)

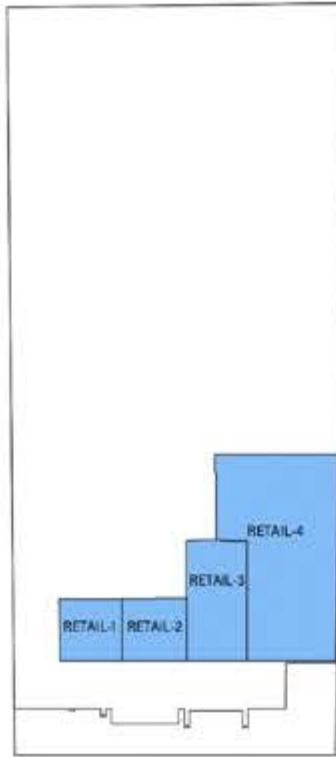
**FEATURES :**  Pool



Ground Floor

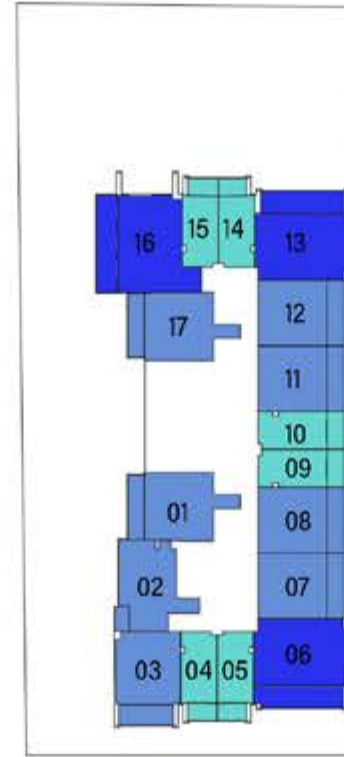


VIEWZ 1

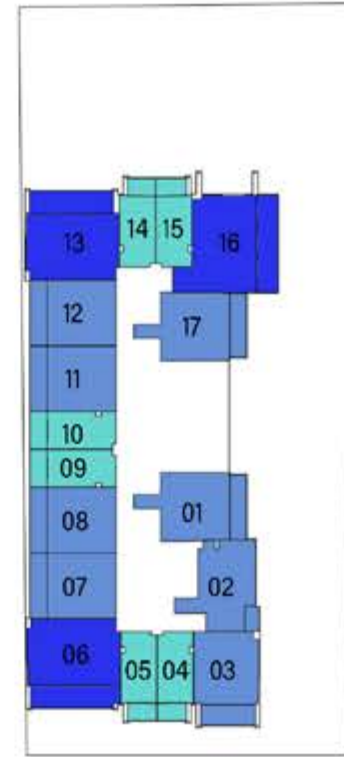


VIEWZ 2

Floor 2 to 21 (Typ)



VIEWZ 1

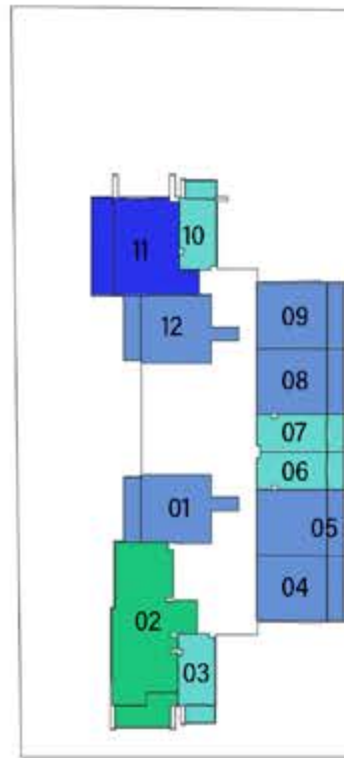


VIEWZ 2

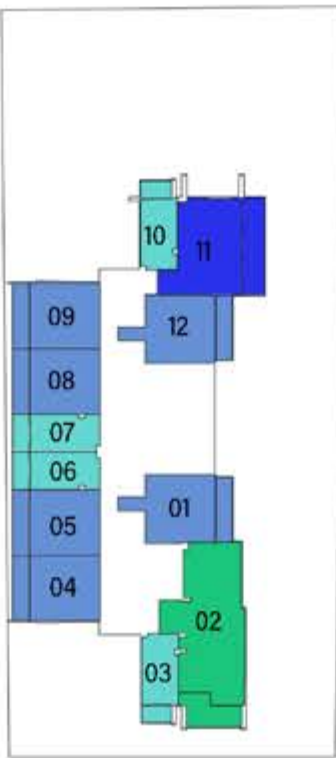


- RETAIL
- STUDIO
- 1 BEDROOM
- 2 BEDROOM
- 3 BEDROOM

Floor 23

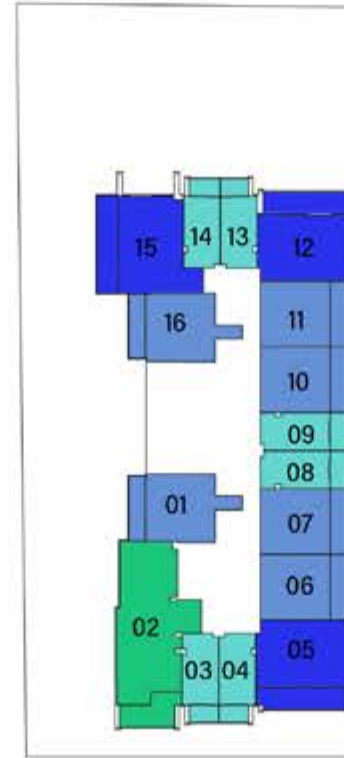


VIEWZ 1

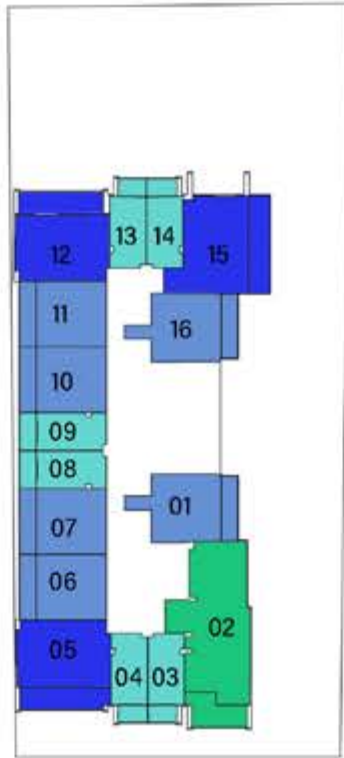


VIEWZ 2

Floor 24 to 35 (Typ)



VIEWZ 1



VIEWZ 2





### LEGEND

1. Swimming Pool
2. Kids Pool
3. Aquatic GYM
4. Kids Play Area
5. Mini Golf
6. Cycling Track
7. Open Air Yoga
8. Outdoor GYM
9. Indoor Gym
10. Chessboard
11. Open Jacuzzi
12. Library
13. Business Center
14. Doctor On Call
15. Snooker Table
16. Table Tennis Zone



### LEGEND

1. Swimming Pool
2. Kids Pool
3. Open Air Floating Cinema
4. BBQ Area
5. Multi Purpose Hall
6. Jogging Track
7. Half Basketball Court
8. Tennis Court
9. Kids Play Area
10. Kids Day Care
11. Beauty Parlour
12. SPA Center
13. Indoor Gym
14. Japanese Garden
15. Kids Splash Pad
16. Rain Shower Area
17. Cigar Lounge

## AMENITIES - VIEWZ 1



Dubai's First Iconic Towers  
with  
**ASTON MARTIN**  
Furnished Interiors  
FORMITALIA  
OFFICIAL PARTNER

## AMENITIES - VIEWZ 2



Dubai's First Iconic Towers  
with  
**ASTON MARTIN**  
Furnished Interiors  
FORMITALIA  
OFFICIAL PARTNER






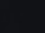
BUY | SELL | RENT | PROPERTY MANAGEMENT SERVICES

GET IN TOUCH WITH US

 **+971 56 818 8610**

 **info@homes4life.ae**

 **Head Office:**  
Office 25 | Oasis Center | Sheikh Zayed Road | Dubai | +971 4 338 7300

 **Branch Office:**  
Retail 1 | Safi Apartments | Town Square Dubai | Dubai | +971 4 398 1528