

URBANA II

THE NEXT LEVEL OF
URBAN LIVING

EMAAR SOUTH



A LIVING
PLACE
A
BREATHING
SPACE





COLOURFUL
PLACE TO
LIVE AND
PLAY





A LEISURELY
LIFESTYLE
BEYOND
COMPARE





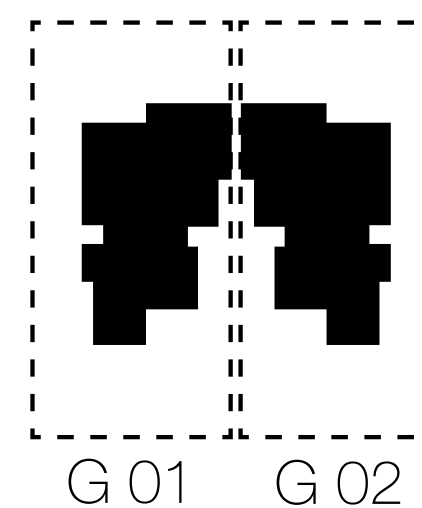
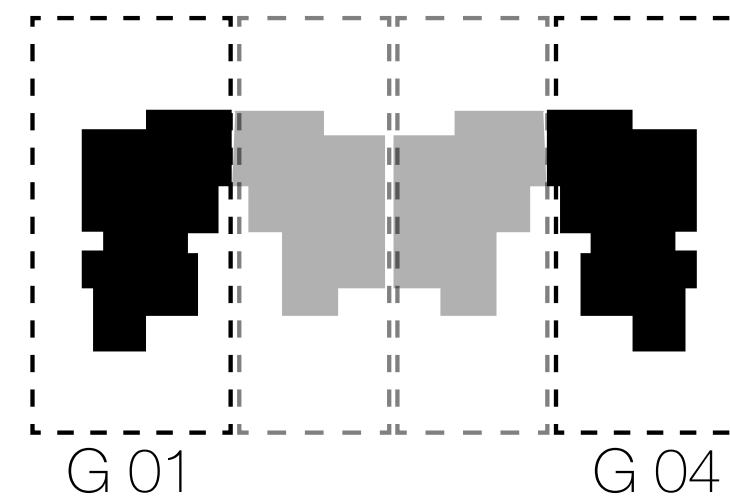


URBANA II FLOOR PLANS



Tiered Townhome

3 Bedroom End Unit
(Ground Floor)

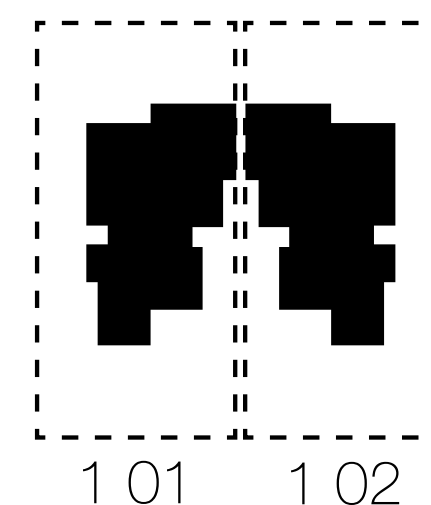
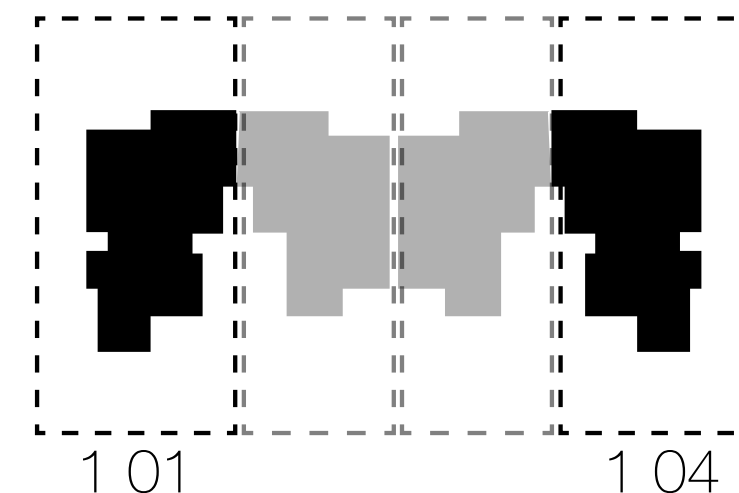
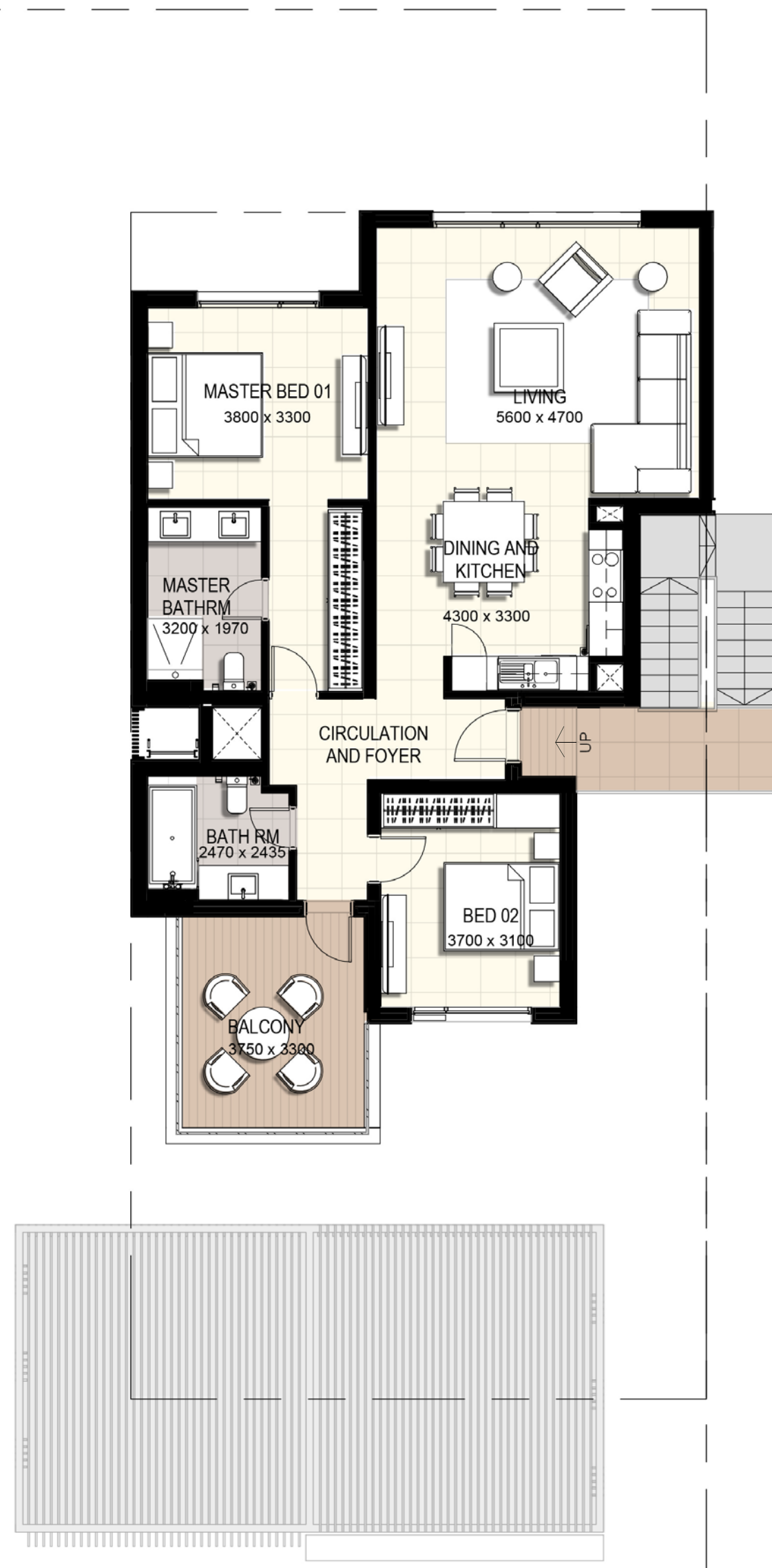


Suite Area	113.32 m2	1 220 sq.ft
Balcony/Terrace	21.24 m2	229 sq.ft
Total Area <small>excluding garden/yard</small>	134.56 m2	1 449 sq.ft

1. All dimensions are in imperial and metric, and measured to structural elements and exclude wall finishes and construction tolerances. 2. All materials, dimensions, and drawings are approximate only. 3. Information is subject to change without notice, at developer's absolute discretion. 4. Actual area may vary from the stated area. 5. Drawings not to scale. 6. All images used are for illustrative purposes only and do not represent the actual size, features, specifications, fittings, and furnishings. 7. The developer reserves the right to make revisions/alterations, at its absolute discretion, without any liability whatsoever. *Please note that landscaping and swimming pool are not provided by the developer.

Tiered Townhome

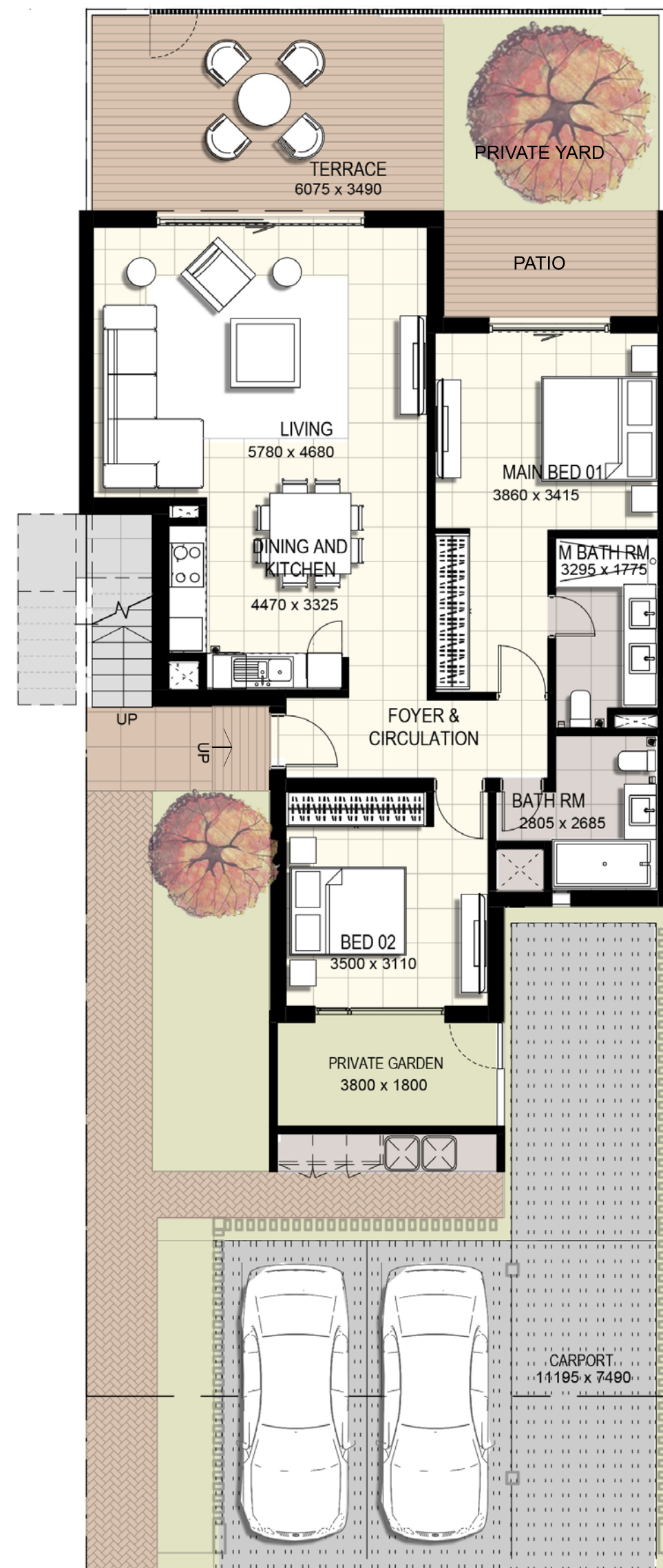
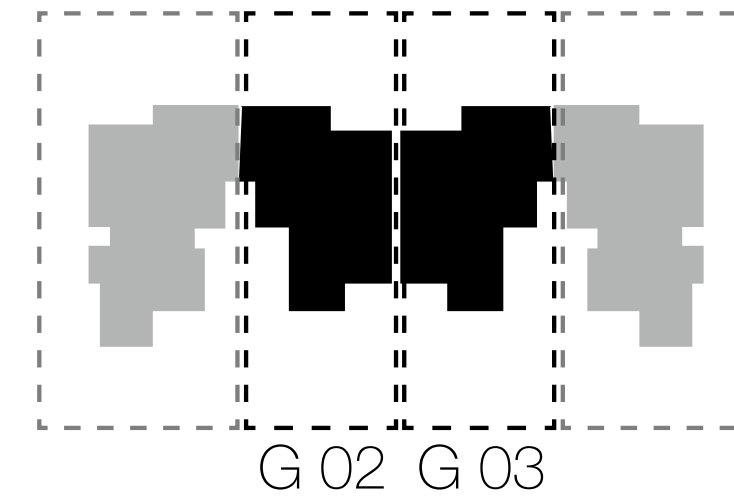
2 Bedroom End Unit
(First Floor)



Suite Area	99.86 m2	1 075 sq.ft
Balcony/Terrace	12.92 m2	139 sq.ft
Total Area	112.78 m2	1 214 sq.ft

Tiered Townhome

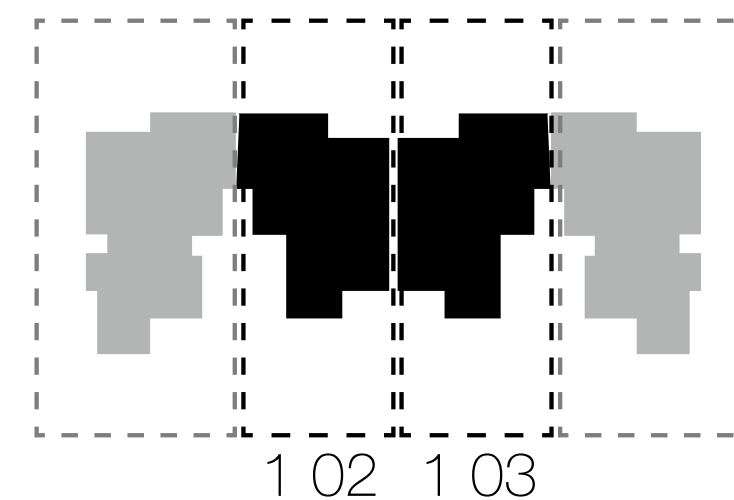
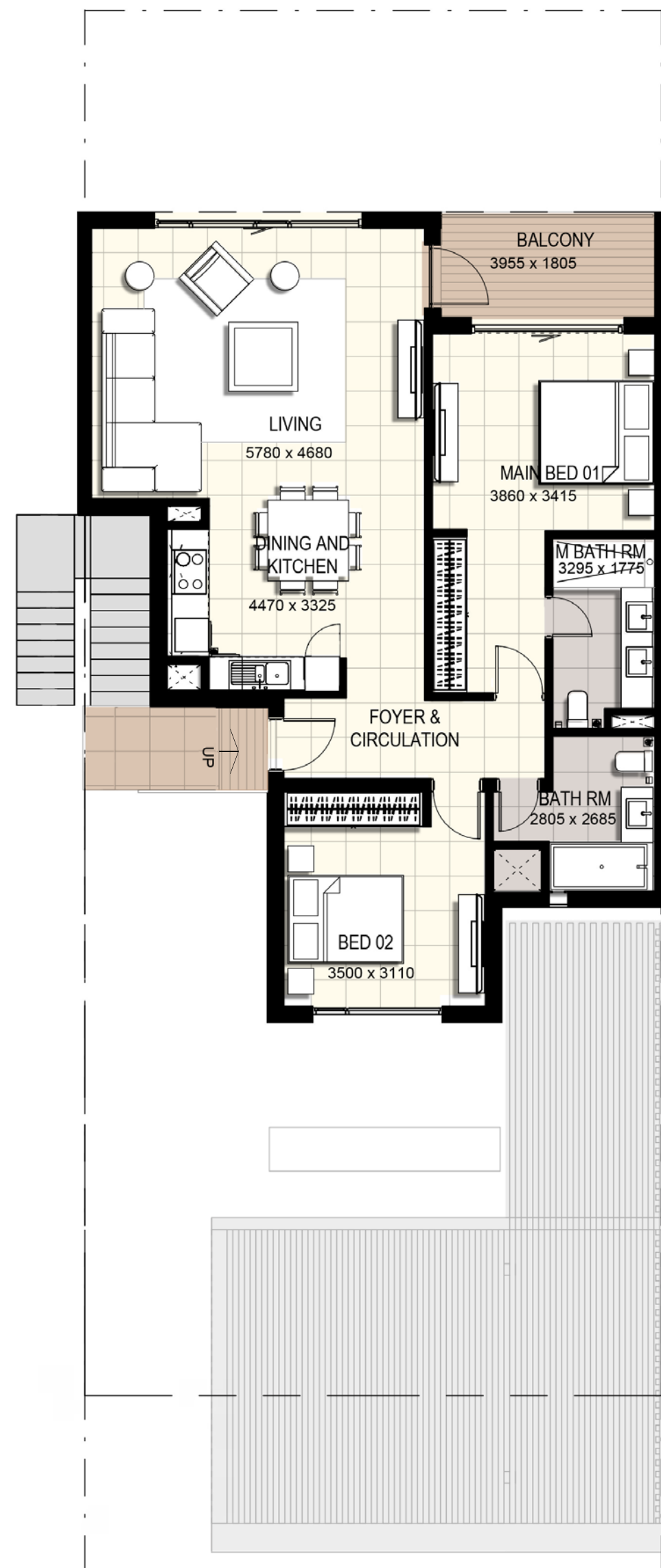
2 Bedroom Mid Unit
(Ground Floor)



Suite Area	100.17 m2	1 078 sq.ft
Balcony/Terrace	29.72 m2	320 sq.ft
Total Area <small>excluding garden/yard</small>	129.89 m2	1 398 sq.ft

Tiered Townhome

2 Bedroom Mid Unit
(First Floor)



Suite Area	100.17 m2	1 078 sq.ft
Balcony/Terrace	7.55 m2	81 sq.ft
Total Area	107.72 m2	1 159 sq.ft

URBANA II MASTER PLAN

LEGEND

- ① STACKED TOWNHOMES
- ② GATED ENTRY
- ③ REC CENTER
- ④ POOL
- ⑤ KIDS PLAY AREA
- ⑥ LINEAR PARK
- ⑦ SIKKA



EMAAR SOUTH



1. All dimensions are in imperial and metric, and measured to structural elements and exclude wall finishes and construction tolerances. 2. All materials, dimensions, and drawings are approximate only. 3. Information is subject to change without notice, at developer's absolute discretion. 4. Actual area may vary from the stated area. 5. Drawings not to scale. 6. All images used are for illustrative purposes only and do not represent the actual size, features, specifications, fittings, and furnishings. 7. The developer reserves the right to make revisions/ alterations, at its absolute discretion, without any liability whatsoever. *Please note that landscaping and swimming pool are not provided by the developer.

URBANA II

For more information on **URBANA II** in **EMAAR SOUTH**, please call 800 36227(UAE) or +971 4 366 1668 (International). Visit our online sales centre at emaar.com or any of our sales centres across the UAE.

DUBAI:

Emaar Sales Center, Downtown Dubai
Dubai Creek Harbour Sales Centre: Ras Al Khor
Dubai Hills Estate Sales Pavillion: Umm Suqeim Road

ABU DHABI:

Emaar Sales Centre: Al Nahda Tower, Ground Floor, 4th Street, Corniche, Al Muroor Road

Open from Saturday - Thursday, from 8.30am - 6.00pm

للمزيد من المعلومات حول إربانا II في إعمار الجنوب الرجاء الاتصال بالرقم (٨٠٠٣٦٢٢٧) في الإمارات العربية المتحدة أو +٩٧١ ٤ ٣٦٦ ١٦٦٨ (دولي) أو قم بزيارة مركز مبيعاتنا الإلكتروني على الموقع emaar.com

دبي

مركز مبيعات إعمار في وسط مدينة دبي
مركز مبيعات خور دبي في رأس الخور
مركز مبيعات دبي هيلز استيت على طريق أم سقيم

أبوظبي

مركز مبيعات إعمار في برج النهضة، الشارع الرابع، الكورنيش، طريق المرور - أبوظبي

السبت إلى الخميس من الساعة ٨:٣٠ صباحاً حتى الساعة ٦ مساءً

EMAAR SOUTH



إعمار الجنوب

