

G+16 Apartments - Residence 12

Typical Sixth to Sixteenth Floor

1 and 2 Bedroom Apartments

MEYDAN ONE

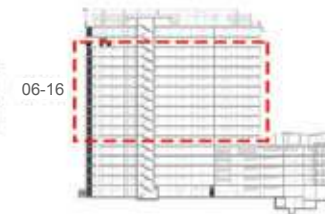
MOHAMMED BIN RASHID
AL MAKTUUM CITY
DISTRICT ONE

DUBAI SKYLINE



MEYDAN HOTEL

 2 BEDROOM 1 BEDROOM CRYSTAL LAGOON



DISCLAIMER: All measurements, dimensions, coordinates and drawings given as the Floor Plans in this literature are approximate and provided only for the purpose of marketing, illustration, information and general guidance as such drawings are not to scale. All the rooms, swimming pool, sizes, locations, orientations, dimensions, fixtures, fittings, finishes and specifications (including materials for, placement, size of rooms, windows, doors, balcony, furniture's, inbuilt wardrobe etc.) provided in the floor plans may vary as the same have been taken from concept designs prior to the actual development/construction and therefore their accuracy in relation to actual construction cannot be confirmed. Hence, we make no guarantee, warranty or representation as to the accuracy and completeness of the Floor plan information as changes may be made during the .development process, without notice. Always refer to latest IFC design available in the sales office for the most accurate representation of all construction details

G+16 Apartments - Residence 12

Fifth Floor

1 and 2 Bedroom Apartments

MEYDAN ONE

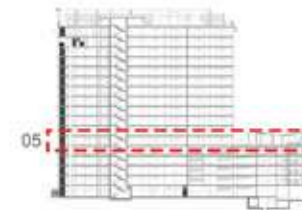
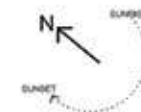
**MOHAMMED BIN RASHID
AL MAKTUUM CITY**
DISTRICT ONE

DUBAI SKYLINE



MEYDAN HOTEL

 2 BEDROOM 1 BEDROOM CRYSTAL LAGOON



DISCLAIMER: All measurements, dimensions, coordinates and drawings given as the Floor Plans in this literature are approximate and provided only for the purpose of marketing, illustration, information and general guidance as such drawings are not to scale. All the rooms, swimming pool, sizes, locations, orientations, dimensions, fixtures, fittings, finishes and specifications (including materials for, placement, size of rooms, windows, doors, balcony, furniture's, inbuilt wardrobe etc.) provided in the floor plans may vary as the same have been taken from concept designs prior to the actual development/construction and therefore their accuracy in relation to actual construction cannot be confirmed. Hence, we make no guarantee, warranty or representation as to the accuracy and completeness of the Floor plan information as changes may be made during the .development process, without notice. Always refer to latest IFC design available in the sales office for the most accurate representation of all construction details

G+16 Apartments - Residence 12

Fourth Floor

1 and 2 Bedroom Apartments


MOHAMMED BIN RASHID
AL MAKTOUM CITY
 DISTRICT ONE

MEYDAN ONE

DUBAI SKYLINE



MEYDAN HOTEL

 **2 BEDROOM**  **1 BEDROOM**  **CRYSTAL LAGOON**



DISCLAIMER: All measurements, dimensions, coordinates and drawings given as the Floor Plans in this literature are approximate and provided only for the purpose of marketing, illustration, information and general guidance as such drawings are not to scale. All the rooms, swimming pool, sizes, locations, orientations, dimensions, fixtures, fittings, finishes and specifications (including materials for, placement, size of rooms, windows, doors, balcony, furniture's, inbuilt wardrobe etc.) provided in the floor plans may vary as the same have been taken from concept designs prior to the actual development/construction and therefore their accuracy in relation to actual construction cannot be confirmed. Hence, we make no guarantee, warranty or representation as to the accuracy and completeness of the Floor plan information as changes may be made during the .development process, without notice. Always refer to latest IFC design available in the sales office for the most accurate representation of all construction details

G+16 Apartments - Residence 12

Typical First to Third Floor

1 and 2 Bedroom Apartments

**MOHAMMED BIN RASHID
AL MAKTOUM CITY**
DISTRICT ONE

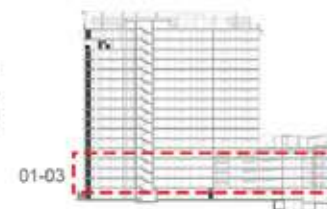
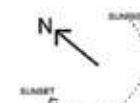
MEYDAN ONE

DUBAI SKYLINE

MEYDAN HOTEL



 2 BEDROOM 1 BEDROOM CRYSTAL LAGOON



DISCLAIMER: All measurements, dimensions, coordinates and drawings given as the Floor Plans in this literature are approximate and provided only for the purpose of marketing, illustration, information and general guidance as such drawings are not to scale. All the rooms, swimming pool, sizes, locations, orientations, dimensions, fixtures, fittings, finishes and specifications (including materials for, placement, size of rooms, windows, doors, balcony, furniture's, inbuilt wardrobe etc.) provided in the floor plans may vary as the same have been taken from concept designs prior to the actual development/construction and therefore their accuracy in relation to actual construction cannot be confirmed. Hence, we make no guarantee, warranty or representation as to the accuracy and completeness of the Floor plan information as changes may be made during the development process, without notice. Always refer to latest IFC design available in the sales office for the most accurate representation of all construction details

2 BEDROOMS

1ST TO 16TH FLOOR

Suite Area: 1053 - 1244 sq. ft

Balcony Area: 30 - 52 sq. ft

Total Area: 1083 - 1296 sq. ft



MOHAMMED BIN RASHID
AL MAKTOUM CITY

DISTRICT ONE



DISCLAIMER: All measurements, dimensions, coordinates and drawings given as the Floor Plans in this literature are approximate and provided only for the purpose of marketing, illustration, information and general guidance as such drawings are not to scale. All the rooms, swimming pool, sizes, locations, orientations, dimensions, fixtures, fittings, finishes and specifications (including materials for, placement, size of rooms, windows, doors, balcony, furniture's, inbuilt wardrobe etc.) provided in the floor plans may vary as the same have been taken from concept designs prior to the actual development/construction and therefore their accuracy in relation to actual construction cannot be confirmed. Hence, we make no guarantee, warranty or representation as to the accuracy and completeness of the Floor plan information as changes may be made during the .development process, without notice. Always refer to latest IFC design available in the sales office for the most accurate representation of all construction details

2 BEDROOMS

1ST TO 16TH FLOOR

Suite Area: 1053 - 1244 sq. ft

Balcony Area: 30 - 52 sq. ft

Total Area: 1083 - 1296 sq. ft



MOHAMMED BIN RASHID
AL MAKTUUM CITY

DISTRICT ONE



DISCLAIMER: All measurements, dimensions, coordinates and drawings given as the Floor Plans in this literature are approximate and provided only for the purpose of marketing, illustration, information and general guidance as such drawings are not to scale. All the rooms, swimming pool, sizes, locations, orientations, dimensions, fixtures, fittings, finishes and specifications (including materials for, placement, size of rooms, windows, doors, balcony, furniture's, inbuilt wardrobe etc.) provided in the floor plans may vary as the same have been taken from concept designs prior to the actual development/construction and therefore their accuracy in relation to actual construction cannot be confirmed. Hence, we make no guarantee, warranty or representation as to the accuracy and completeness of the Floor plan information as changes may be made during the development process, without notice. Always refer to latest IFC design available in the sales office for the most accurate representation of all construction details

2 BEDROOMS

1ST TO 16TH FLOOR

Suite Area: 1053 - 1244 sq. ft

Balcony Area: 30 - 52 sq. ft

Total Area: 1083 - 1296 sq. ft



MOHAMMED BIN RASHID
AL MAKTOUM CITY

DISTRICT ONE



DISCLAIMER: All measurements, dimensions, coordinates and drawings given as the Floor Plans in this literature are approximate and provided only for the purpose of marketing, illustration, information and general guidance as such drawings are not to scale. All the rooms, swimming pool, sizes, locations, orientations, dimensions, fixtures, fittings, finishes and specifications (including materials for, placement, size of rooms, windows, doors, balcony, furniture's, inbuilt wardrobe etc.) provided in the floor plans may vary as the same have been taken from concept designs prior to the actual development/construction and therefore their accuracy in relation to actual construction cannot be confirmed. Hence, we make no guarantee, warranty or representation as to the accuracy and completeness of the Floor plan information as changes may be made during the .development process, without notice. Always refer to latest IFC design available in the sales office for the most accurate representation of all construction details

1 BEDROOM

1ST TO 16TH FLOOR

Suite Area:	684 - 716 sq. ft
Balcony Area:	30 - 55 sq. ft
Total Area:	716 - 768 sq. ft



MOHAMMED BIN RASHID
AL MAKTOUM CITY

DISTRICT ONE



DISCLAIMER: All measurements, dimensions, coordinates and drawings given as the Floor Plans in this literature are approximate and provided only for the purpose of marketing, illustration, information and general guidance as such drawings are not to scale. All the rooms, swimming pool, sizes, locations, orientations, dimensions, fixtures, fittings, finishes and specifications (including materials for, placement, size of rooms, windows, doors, balcony, furniture's, inbuilt wardrobe etc.) provided in the floor plans may vary as the same have been taken from concept designs prior to the actual development/construction and therefore their accuracy in relation to actual construction cannot be confirmed. Hence, we make no guarantee, warranty or representation as to the accuracy and completeness of the Floor plan information as changes may be made during the .development process, without notice. Always refer to latest IFC design available in the sales office for the most accurate representation of all construction details

1 BEDROOM

1ST TO 16TH FLOOR

Suite Area: 684 - 716 sq. ft

Balcony Area: 30 - 55 sq. ft

Total Area: 716 - 768 sq. ft



MOHAMMED BIN RASHID
AL MAKTOUM CITY

DISTRICT ONE



G+16
KEYPLAN

DISCLAIMER: All measurements, dimensions, coordinates and drawings given as the Floor Plans in this literature are approximate and provided only for the purpose of marketing, illustration, information and general guidance as such drawings are not to scale. All the rooms, swimming pool, sizes, locations, orientations, dimensions, fixtures, fittings, finishes and specifications (including materials for, placement, size of rooms, windows, doors, balcony, furniture's, inbuilt wardrobe etc.) provided in the floor plans may vary as the same have been taken from concept designs prior to the actual development/construction and therefore their accuracy in relation to actual construction cannot be confirmed. Hence, we make no guarantee, warranty or representation as to the accuracy and completeness of the Floor plan information as changes may be made during the .development process, without notice. Always refer to latest IFC design available in the sales office for the most accurate representation of all construction details

G+16 Apartments - Residence 12

Ground Floor

1 and 2 Bedroom Apartments

MEYDAN ONE

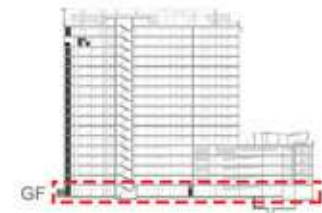
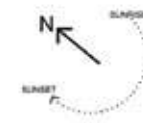
D1
MOHAMMED BIN RASHID
AL MAKTOUM CITY
DISTRICT ONE

DUBAI SKYLINE



MEYDAN HOTEL

 2 BEDROOM 1 BEDROOM CRYSTAL LAGOON



DISCLAIMER: All measurements, dimensions, coordinates and drawings given as the Floor Plans in this literature are approximate and provided only for the purpose of marketing, illustration, information and general guidance as such drawings are not to scale. All the rooms, swimming pool, sizes, locations, orientations, dimensions, fixtures, fittings, finishes and specifications (including materials for, placement, size of rooms, windows, doors, balcony, furniture's, inbuilt wardrobe etc.) provided in the floor plans may vary as the same have been taken from concept designs prior to the actual development/construction and therefore their accuracy in relation to actual construction cannot be confirmed. Hence, we make no guarantee, warranty or representation as to the accuracy and completeness of the Floor plan information as changes may be made during the .development process, without notice. Always refer to latest IFC design available in the sales office for the most accurate representation of all construction details

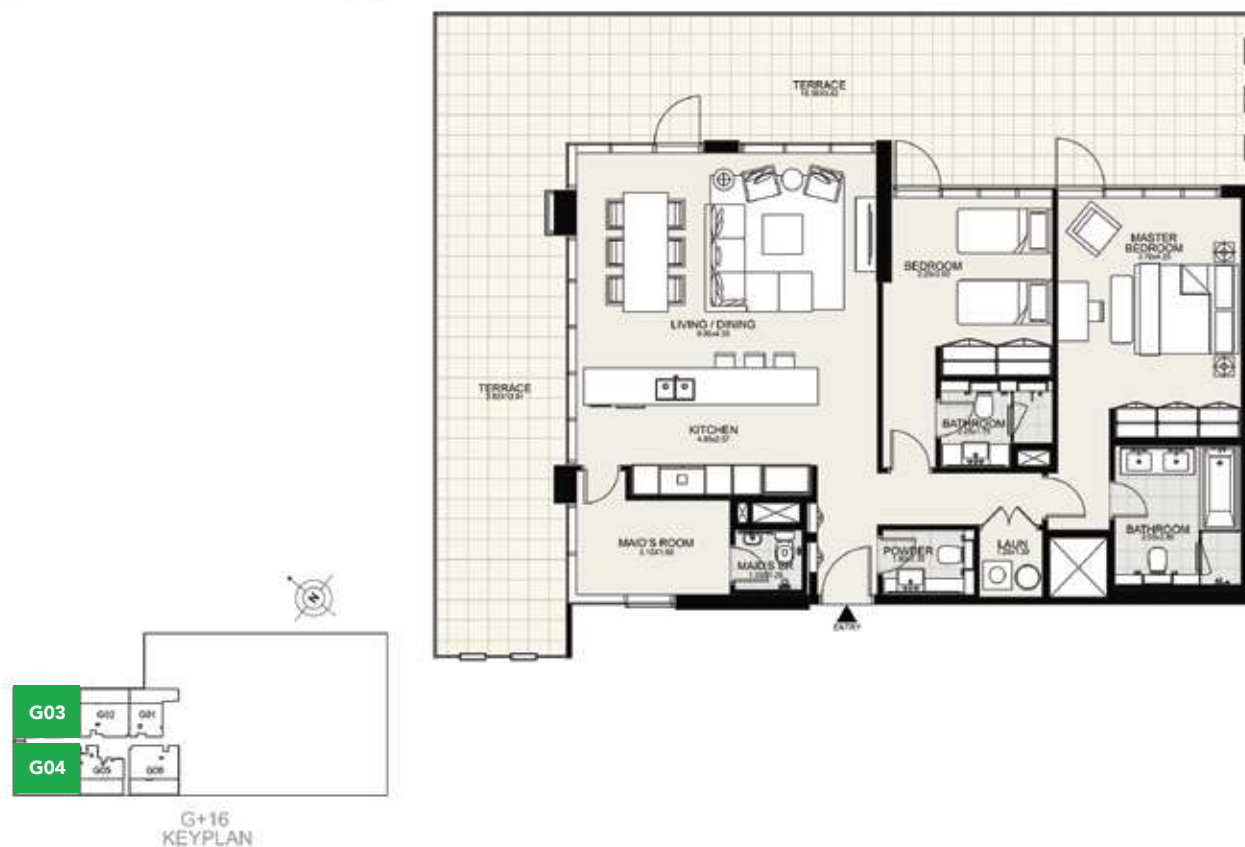
2 BEDROOMS

GROUND FLOOR

Suite Area: 1053 - 1244 sq. ft

Balcony Area: 468 - 897 sq. ft

Total Area: 1521 - 2132 sq. ft

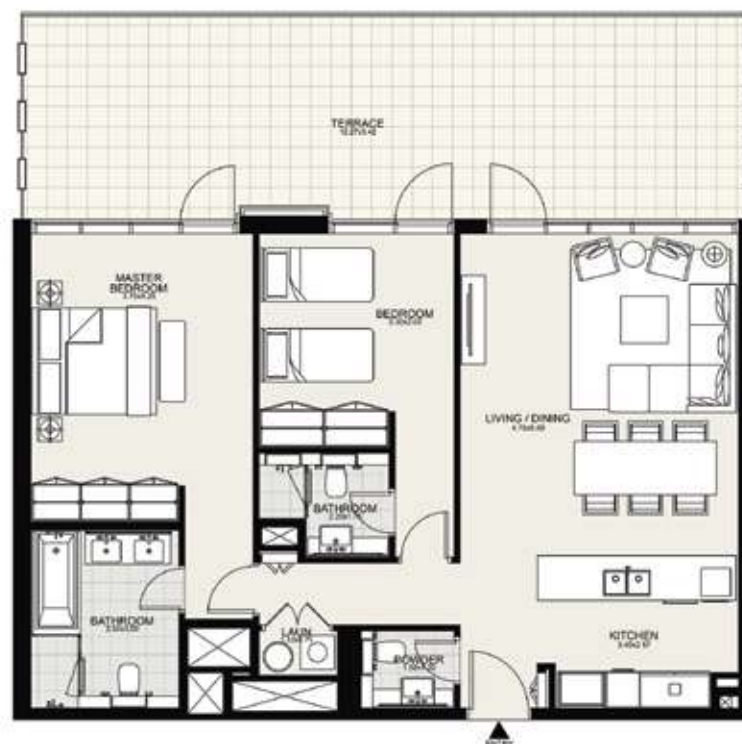
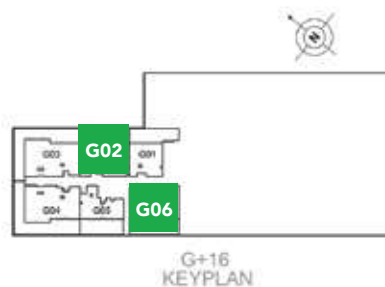


DISCLAIMER: All measurements, dimensions, coordinates and drawings given as the Floor Plans in this literature are approximate and provided only for the purpose of marketing, illustration, information and general guidance as such drawings are not to scale. All the rooms, swimming pool, sizes, locations, orientations, dimensions, fixtures, fittings, finishes and specifications (including materials for, placement, size of rooms, windows, doors, balcony, furniture's, inbuilt wardrobe etc.) provided in the floor plans may vary as the same have been taken from concept designs prior to the actual development/construction and therefore their accuracy in relation to actual construction cannot be confirmed. Hence, we make no guarantee, warranty or representation as to the accuracy and completeness of the Floor plan information as changes may be made during the development process, without notice. Always refer to latest IFC design available in the sales office for the most accurate representation of all construction details

2 BEDROOMS

GROUND FLOOR

Suite Area:	1053 - 1244 sq. ft
Balcony Area:	468 - 897 sq. ft
Total Area:	1521 - 2132 sq. ft



DISCLAIMER: All measurements, dimensions, coordinates and drawings given as the Floor Plans in this literature are approximate and provided only for the purpose of marketing, illustration, information and general guidance as such drawings are not to scale. All the rooms, swimming pool, sizes, locations, orientations, dimensions, fixtures, fittings, finishes and specifications (including materials for, placement, size of rooms, windows, doors, balcony, furniture's, inbuilt wardrobe etc.) provided in the floor plans may vary as the same have been taken from concept designs prior to the actual development/construction and therefore their accuracy in relation to actual construction cannot be confirmed. Hence, we make no guarantee, warranty or representation as to the accuracy and completeness of the Floor plan information as changes may be made during the .development process, without notice. Always refer to latest IFC design available in the sales office for the most accurate representation of all construction details

1 BEDROOM

GROUND FLOOR

Suite Area:	686 - 714 sq. ft
Balcony Area:	446 - 451 sq. ft
Total Area:	1137 - 1159 sq. ft

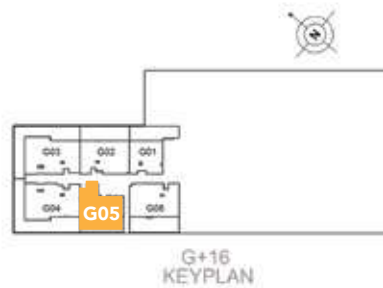


DISCLAIMER: All measurements, dimensions, coordinates and drawings given as the Floor Plans in this literature are approximate and provided only for the purpose of marketing, illustration, information and general guidance as such drawings are not to scale. All the rooms, swimming pool, sizes, locations, orientations, dimensions, fixtures, fittings, finishes and specifications (including materials for, placement, size of rooms, windows, doors, balcony, furniture's, inbuilt wardrobe etc.) provided in the floor plans may vary as the same have been taken from concept designs prior to the actual development/construction and therefore their accuracy in relation to actual construction cannot be confirmed. Hence, we make no guarantee, warranty or representation as to the accuracy and completeness of the Floor plan information as changes may be made during the .development process, without notice. Always refer to latest IFC design available in the sales office for the most accurate representation of all construction details

1 BEDROOM

GROUND FLOOR

Suite Area:	686 - 714 sq. ft
Balcony Area:	446 - 451 sq. ft
Total Area:	1137 - 1159 sq. ft



DISCLAIMER: All measurements, dimensions, coordinates and drawings given as the Floor Plans in this literature are approximate and provided only for the purpose of marketing, illustration, information and general guidance as such drawings are not to scale. All the rooms, swimming pool, sizes, locations, orientations, dimensions, fixtures, fittings, finishes and specifications (including materials for, placement, size of rooms, windows, doors, balcony, furniture's, inbuilt wardrobe etc.) provided in the floor plans may vary as the same have been taken from concept designs prior to the actual development/construction and therefore their accuracy in relation to actual construction cannot be confirmed. Hence, we make no guarantee, warranty or representation as to the accuracy and completeness of the Floor plan information as changes may be made during the .development process, without notice. Always refer to latest IFC design available in the sales office for the most accurate representation of all construction details