

A black and white artistic photograph of a woman's profile, facing right. She is wearing a crown made of large, spiky, dried floral or seed-like elements. The lighting is dramatic, highlighting the contours of her face and the texture of the crown. The background is a soft, out-of-focus light.

Bianca
by Reportage

UNIT TYPES





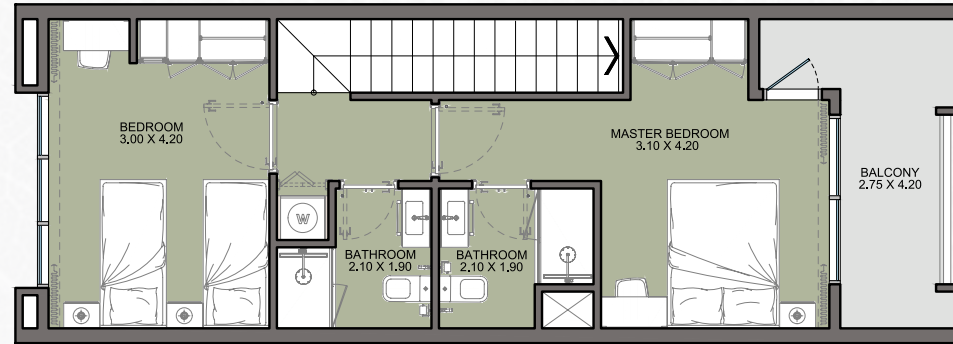
UNIT TYPES

2B TOWNHOUSE | TYPE A

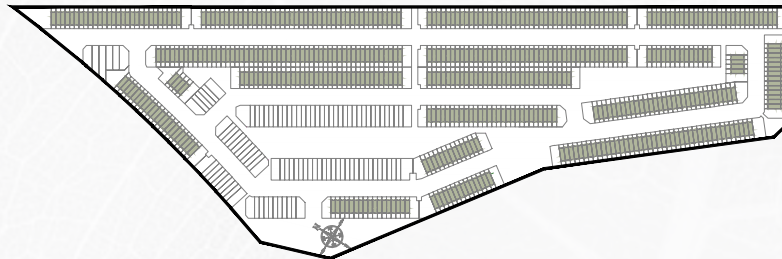
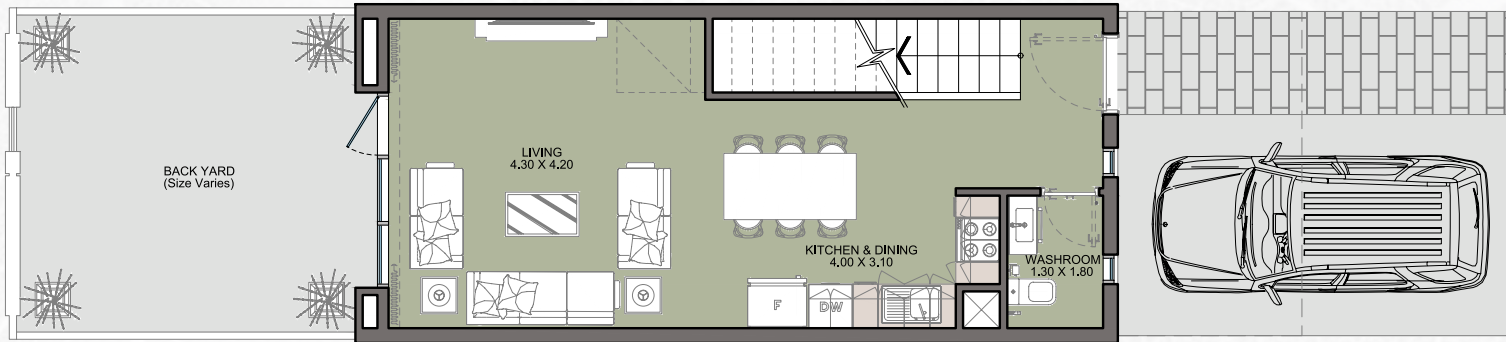


Scan for Virtual Tour

First Level



Ground Level

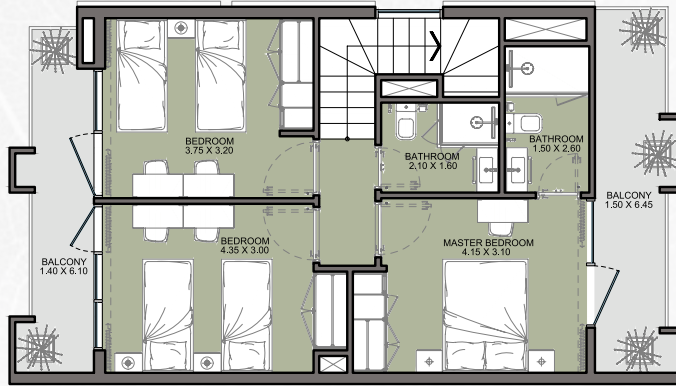


Internal Area	973 sq.ft
Outdoor Area	581 to 693 sq.ft
Total Area	1555 to 1667 sq.ft

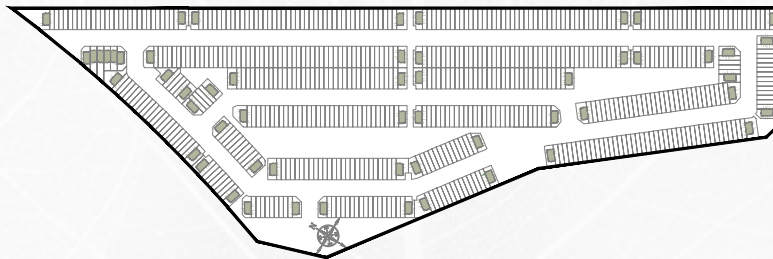
All drawings and dimensions are approximate. Drawings are not to scale and are subject to change without notice. The developer reserves the right to make revisions. The units are measured at typical floors in the building and columns may vary in size depending on the floor level. The furnishing and accessories shown are for representation only. The availability, length and width of the balcony varies depending on which floor and which orientation the unit is located within the building. There will be slight differences in the internal areas between the same unit types depending on the shaft sizes that go through the units.

3B TOWNHOUSE | TYPE A

First Level



Ground Level



Internal Area	1222 to 1241 sq.ft
Outdoor Area	1224 to 4698 sq.ft
Total Area	2446 to 5940 sq.ft

All drawings and dimensions are approximate. Drawings are not to scale and are subject to change without notice. The developer reserves the right to make revisions. The units are measured at typical floors in the building and columns may vary in size depending on the floor level. The furnishing and accessories shown are for representation only. The availability, length and width of the balcony varies depending on which floor and which orientation the unit is located within the building. There will be slight differences in the internal areas between the same unit types depending on the shaft sizes that go through the units.

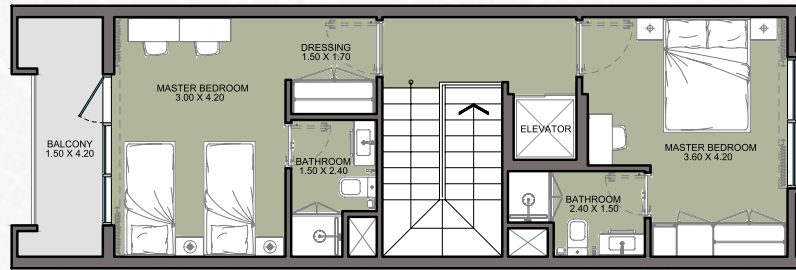


4B TOWNHOUSE | TYPE A

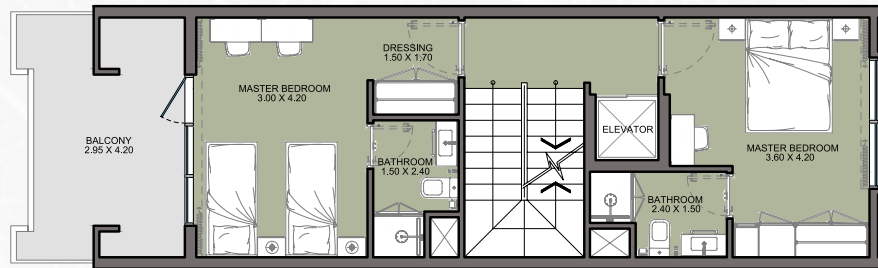


Scan for Virtual Tour

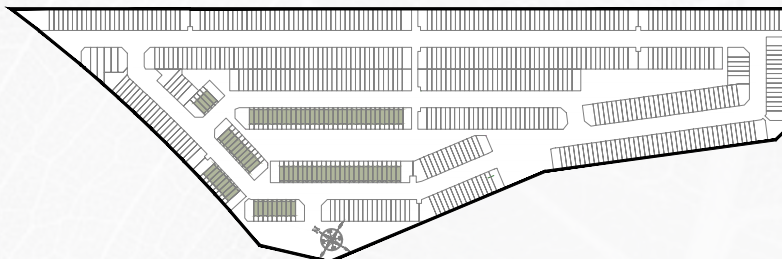
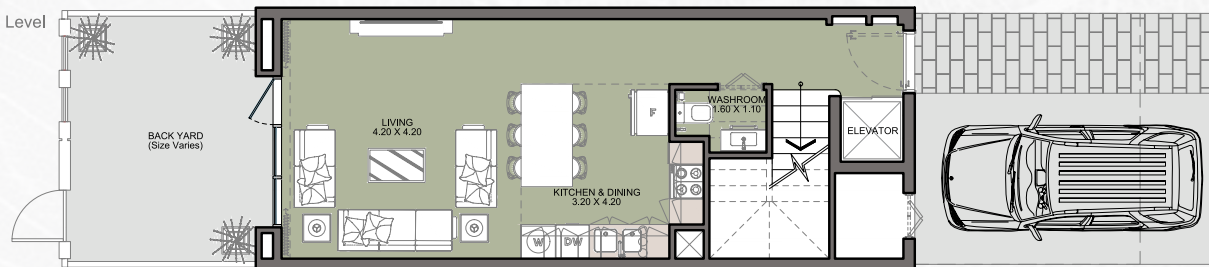
Second Level



First Level



Ground Level



Internal Area	1661 sq.ft
Outdoor Area	647 to 686 sq.ft
Total Area	2308 to 2347 sq.ft

All drawings and dimensions are approximate. Drawings are not to scale and are subject to change without notice. The developer reserves the right to make revisions. The units are measured at typical floors in the building and columns may vary in size depending on the floor level. The furnishing and accessories shown are for representation only. The availability, length and width of the balcony varies depending on which floor and which orientation the unit is located within the building. There will be slight differences in the internal areas between the same unit types depending on the shaft sizes that go through the units.

Bianca
by Reportage

MASTER PLAN

*Once upon a life in
Dubailand..*

*Once upon a life in
Dubailand..*



Bianca
by Reportage

ريورتاج العقارية
Reportage.
Properties

Abu Dhabi-UAE | Head Office
Tamouh Tower
28th Floor, Al Reem Island
P.O. Box: 111949
Tollfree: +971 800 77 55 2
info@reportageuae.com

Dubai-UAE
Anantara Business Tower
3rd Floor, Business Bay
P.O. Box: 27446
Tollfree: +971 800 77 55 2
info@reportageuae.com

Cairo-Egypt
The WaterWay
Mohammed Naguib
B1-Office BF06, New Cairo
Phone: +20 17023
info@reportageeg.com

Istanbul- Türkiye
Levent, Tekfen Tower
8th Floor, Office 31, Büyükdere St.
P.O. Box 34394, Şişli
T: +90 530 774 9595
info@reportage.com.tr

Riyadh-KSA
Building No. 3230
Al Aflaj St., Al Suwaidi
P.O. Box 12791
T: +966 11 215 1110
info@reportageuae.com

For more information, visit reportageuae.com
or call 800 77 55 2 | +971 50 244 1078



Legal Disclaimer:

The information contained in this brochure is confidential and is for the exclusive use of the recipient. This brochure may not be reproduced, distributed, delivered, or furnished to any person without the prior written approval of Reportage Properties. No representation or warranty (expressed or implied) is made or can be given with respect to the accuracy or completeness of the information herein, or that any future offer of units or apartments in the project will conform to the terms described herein. Nothing in this leaflet should be construed as financial, legal, tax or regulatory advice. All accessories such as electronics, furniture, white goods, decorative elements and so forth included in this brochure are not part of the standard unit and used for illustration purposes only. All plans, layouts, pictures, renderings, information and details included in this brochure are indicative only and may change at any time up to the final 'as built' status in accordance with final designs of the project and regulatory approvals and planning permissions.

