

A modern, curved building with large glass windows and balconies is shown at dusk. The building is illuminated from within, and the balconies have glass railings. In the foreground, there are palm trees and a walkway. In the background, a body of water reflects the city lights, and a distant skyline with a prominent skyscraper is visible under a dark blue sky.

# OCEAN HOUSE

ELLINGTON



A STATE OF FLOW

THE ART  
OF PALM  
ISLAND  
LIVING

Since 2014, we have approached every project with a deep understanding of the human experience. We believe our devotion to craft and exceptional detail is what makes our developments stand out among Dubai's expanding skyline, and beautiful islands, in ways that few buildings can.

Ocean House epitomises this philosophy at the highest level yet. Our second development on Palm Jumeirah, it perfects the art of island living.

LIVE *IN DESIGN*





An aerial photograph of Palm Jumeirah, an artificial island in Dubai, United Arab Emirates. The island is a long, narrow strip of land that curves into the Arabian Gulf. It is densely packed with buildings, including the iconic Atlantis The Palm hotel with its large, ornate archway. The island is surrounded by deep blue water, and the sky above is filled with soft, golden clouds from the setting sun. In the background, the city skyline of Dubai is visible, with numerous skyscrapers and buildings. The overall scene is a stunning display of human-made architecture and natural beauty.

## A MASTERPIECE OF OCEAN EXPANSION

The 17 fronds of Palm Jumeirah reach into the Arabian Gulf, immersing themselves in the ocean's ethereal charm. With views out to sea and back across the city skyline, the island connects Dubai's rich maritime heritage with its insatiable appetite for innovation, expansion and limitless possibilities.



DRIVING DISTANCES

**01**  
MINUTE  
The Boardwalk Palm Jumeirah

**02**  
MINUTES  
Atlantis The Palm

**05**  
MINUTES  
The Pointe Palm Jumeirah

**10**  
MINUTES  
The View at The Palm

**10**  
MINUTES  
Nakheel Mall

**15**  
MINUTES  
Dubai Marina

**15**  
MINUTES  
Dubai Harbour

**20**  
MINUTES  
Emirates Golf Club

**20**  
MINUTES  
Burj Al Arab

**25**  
MINUTES  
Ain Dubai

**25**  
MINUTES  
Mall of The Emirates

**25**  
MINUTES  
Dubai Mall & Burj Khalifa

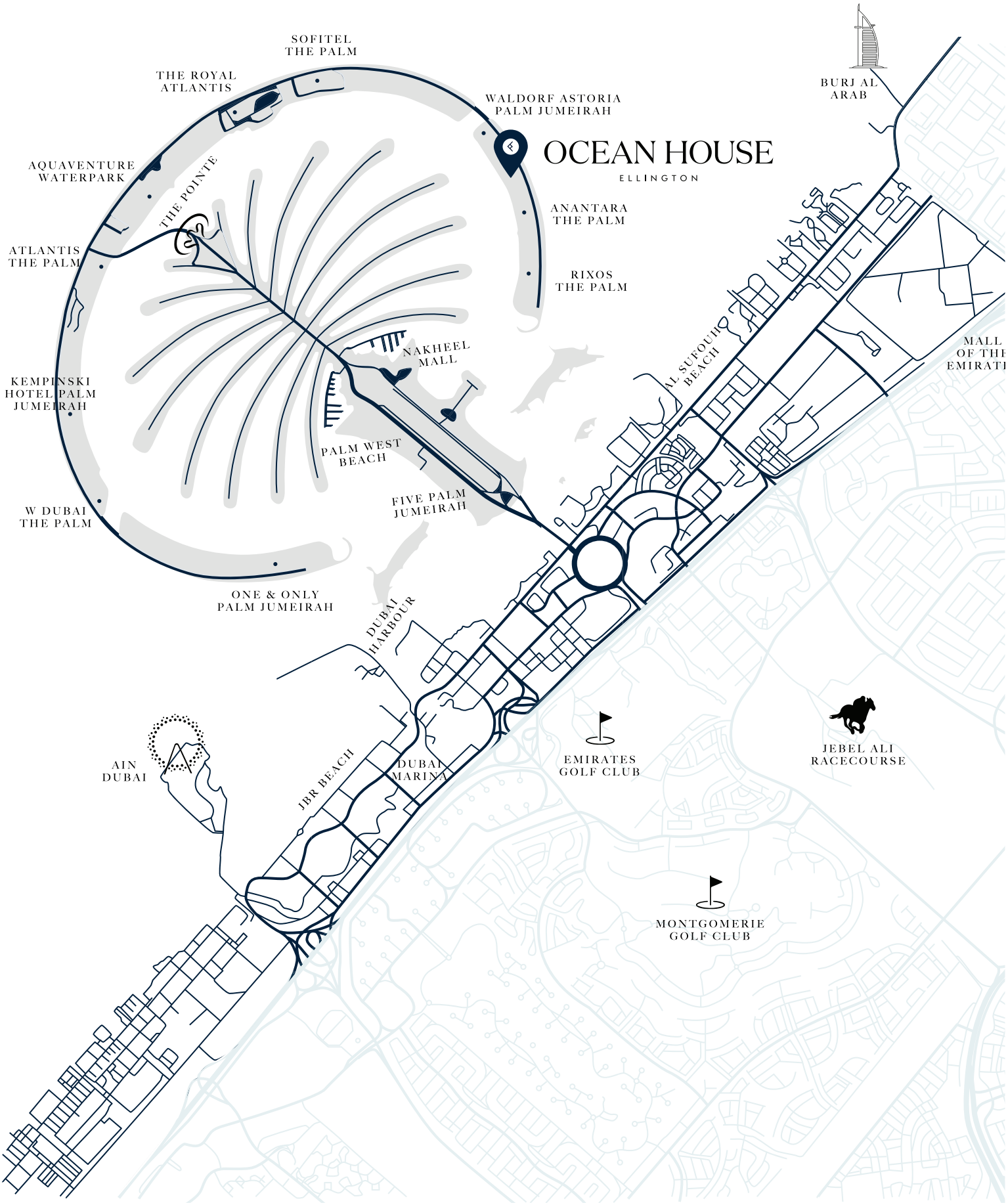
**25**  
MINUTES  
Museum of the Future

**30**  
MINUTES  
Dubai International Financial Centre

**35**  
MINUTES  
Dubai International Airport

**38**  
MINUTES  
Dubai World Central Airport

THE PALM JUMEIRAH





WELCOME TO A SEAMLESS STATE OF FLOW

WHERE  
EXPERIENCES  
BECOME  
LIFESTYLES

Follow the call of the ocean and discover a modernist way of life, led by design. The building's flowing physical facade is akin to the way the interiors fit seamlessly with the lives and lifestyles of its residents — a place to find a new way to co-exist with the ocean.







ARCHITECTURAL  
SYNERGY





ARCHITECTURAL SYNERGY

ALWAYS  
IN  
MOTION

Emulating the undulation of waves and tides, the architectural form of Ocean House appears always in motion. Its curves have a fluidity that draws your eye to the building's connection with the Gulf and the calming nature of its beachside location.



A NEW ARRIVAL



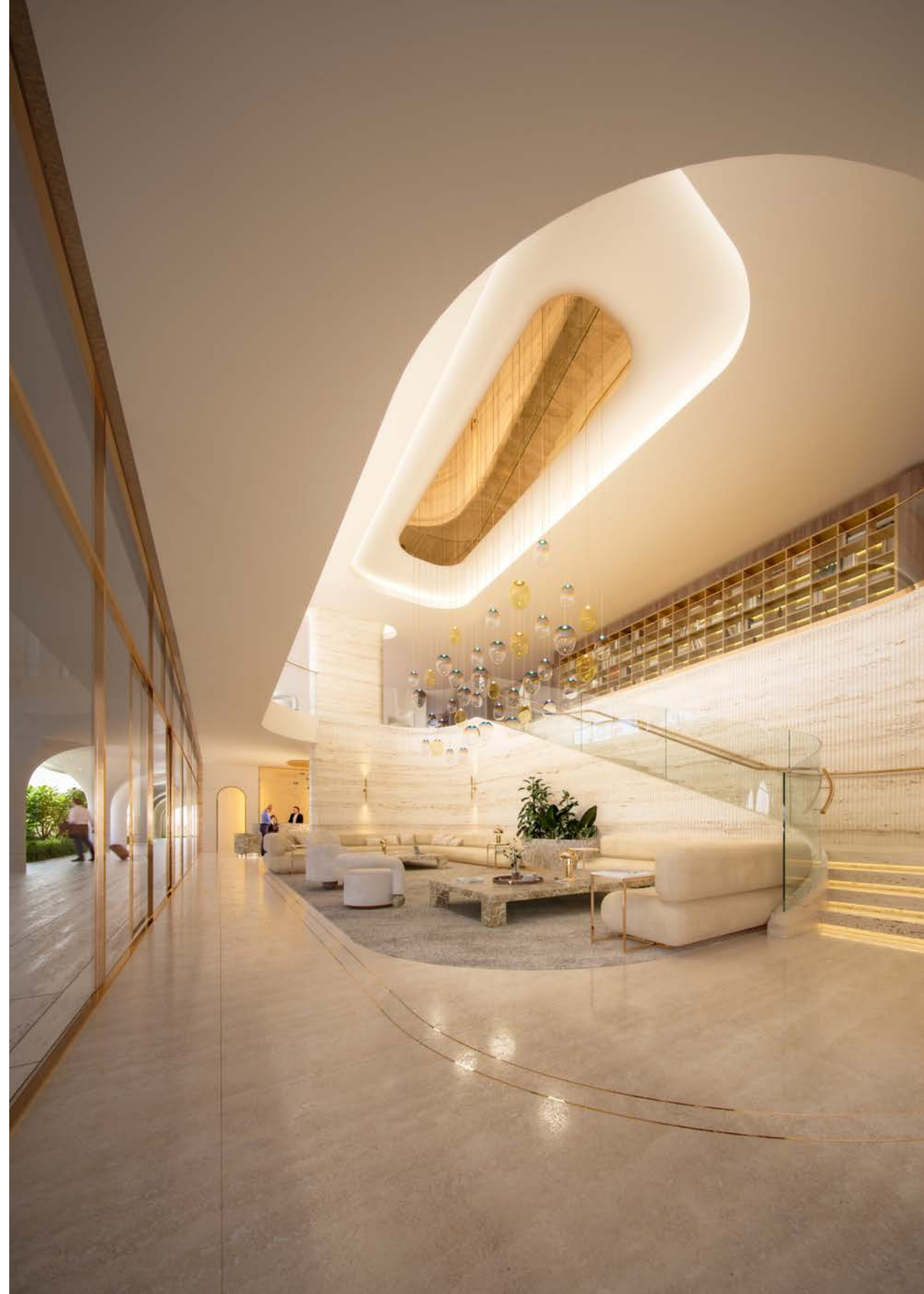


## THE LOBBY

### WHERE THE OCEAN MEETS THE SAND

Residents are welcomed home to a vast double-height lobby with a hotel-style pick-up and drop-off. Spanning two floors of the building, the Lobby features a beautiful carved stone reception desk, inviting you to discover a comfortable lounge and private co-working spaces.

A wooden sculptural staircase takes you to the first floor, where an art gallery and skyline views from the terrace await. At this upper level, there is also access to the property's exclusive spa and salt caves via the privacy of a corridor with curved walls in natural stone.







# FOLLOW THE OCEAN

At Ocean House, a 'lifestyle' is not defined by how many amenities are on offer, or even by how exclusive they are. Here, they are transformed into experiences, made unforgettable by design.





## WATER

Next in your odyssey through the elements, the refreshing cascades of rain showers, soothing hydromassage and chromotherapy showers trigger a multitude of rejuvenating senses — combined with aromatherapy steam showers and mineral-enriched power showers, you are left feeling renewed.







## SALT

Health and well being is at the heart of Ocean House.  
And the wellness studio is the pulse. Embark on a journey through the  
healing properties of salt and water with halo therapy salt cave and kneip  
path walks, infrared sauna and steam rooms.









## AIR

Wellness at Ocean House flows through the building like a sea breeze. Accessible from the lobby, residents have private access to an outdoor yoga area with a calming water feature, a fitness gym looking out over the swimming pool view and changing areas featuring steam rooms, a sauna and an enclosed outdoor shower.











THE CLUBHOUSE

EXCELLENCE  
FOR  
ALL  
TASTES

The decadence of The Clubhouse is an invitation for all tastes and occasions to excel. The space is a reconfigurable lounge and dining area complete with a show kitchen for private chefs, wine and cigar rooms, as well as a bar with games tables and a plush private cinema room.







CHILDREN'S PLAY AREA

AN  
OCEAN  
ADVENTURE  
FOR  
KIDS

Fun and games for our younger residents are not forgotten. On the ground floor they will find a unique play area with a climbing wall, storybooks, art areas, sensory walls and a motor skills busy board.









A modern, curved building with large glass windows and a swimming pool. The building features a series of white, curved balconies and a large glass facade that reflects the surrounding landscape. The interior is visible through the glass, showing a dining area with a table and chairs. The exterior is a lush green lawn with a swimming pool in the foreground. Two lounge chairs are positioned on the lawn near the pool. The text "INTERIOR ENCHANTMENT" is overlaid on the image in a white, serif font.

# INTERIOR ENCHANTMENT





The vast interiors of Ocean House introduce textures and funnels of light that speak the language of the sea: calming, refreshing, soothing and powerful. White marble, travertine, warm oak and earthy upholstery bring a natural harmony to open and intimate spaces. This counteracts the patterned rugs and champagne gold fixtures that exude the property's unique modern character.



## LIVING ROOMS

### A L I F E B Y T H E O C E A N

Upon an expanse of natural marble that extends through the apartments, sumptuous living spaces look out across the water from curved balconies – with Royal Atlantis to the West and Burj Al Arab to the North East. These stunning rooms are adorned in plush furnishing and the finer details of living.











## KITCHENS

O P E N  
P L A N  
O P E N  
M I N D

Blending seamlessly into living spaces, the kitchen follows the line-of-sight from out at sea. It is centred around a grand island in natural stone and surrounded by soft-toned cabinetry. Subtle metallic finishes can be found in fittings and appliances, showcasing a level of detailing that's become synonymous with Ellington Properties.







## BEDROOMS

### YOUR PRIVATE VIEW OF THE OCEAN

The most intimate spaces in the building, bedrooms can be soothing, rejuvenating, awakening and nourishing over 24 hours. They are designed to give every resident a unique sense of belonging by harmonising with their lifestyles as seamlessly as the sun rising over the ocean and setting over the Dubai skyline.











## BATHROOMS

## WELLNESS RITUALS

Living In an ocean paradise, apartments are gifted with bathrooms designed to promote rituals of wellness. Taking inspiration from nature with textured stone and marble, the bathrooms feature large UV stable free-standing bathtubs designed to retain heat, fully sealed flush stone counters and sensor-touch wellness spa areas built-in.









ELLINGTON  
PROPERTIES

NORTHACRE

SOL  
PROPERTIES