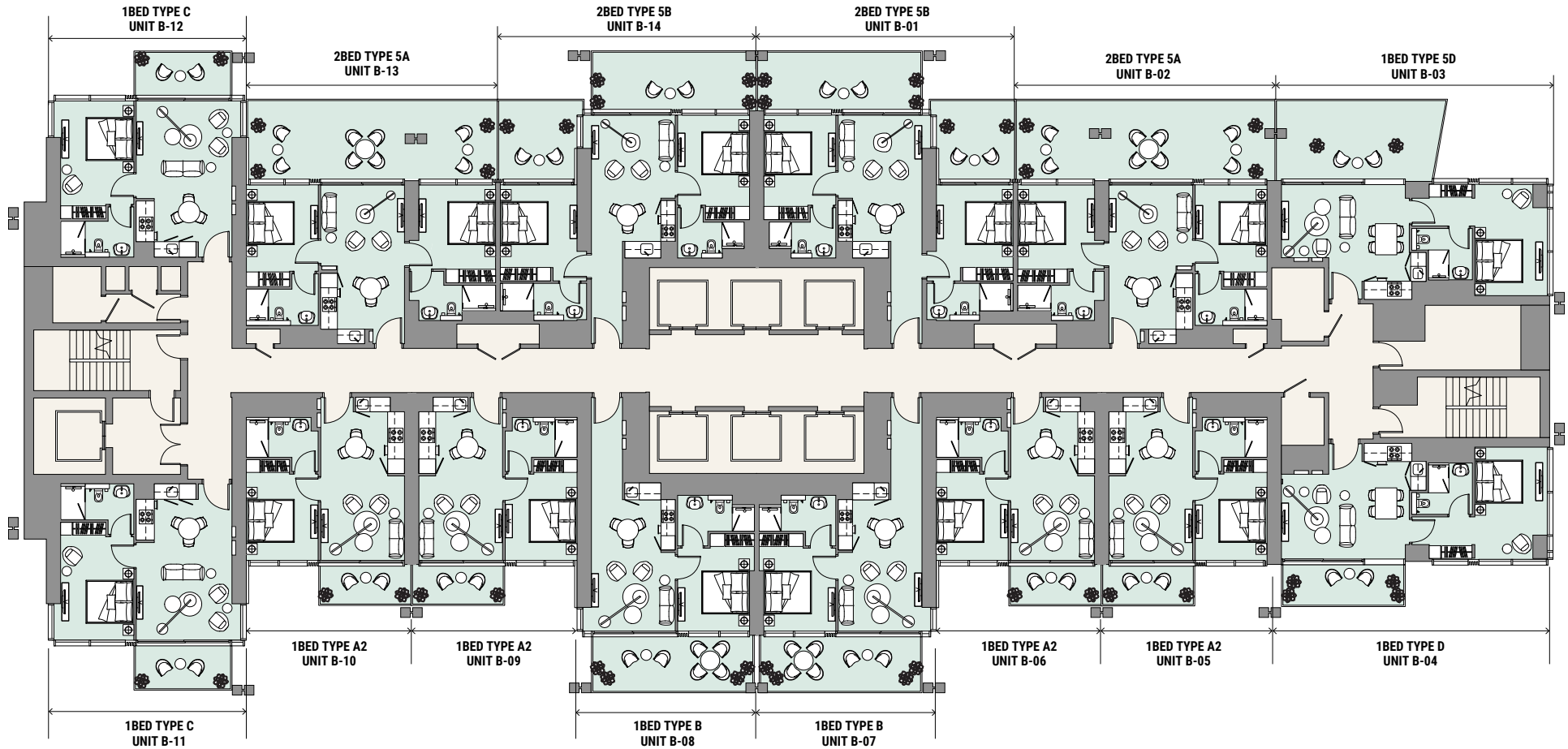


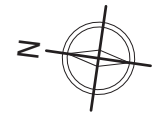
- 1. Lobby Entry
- 2. Yoga Deck
- 3. Lounge Area/Outdoor Seating
- 4. Community Pool
- 5. Courtyard
- 6. Pool Deck
- 7. Sunken Seating
- 8. BBQ Area
- 9. Outdoor Fitness Area
- 10. Sprint Track
- 11. Padel Court
- 12. Pickleball/Basketball Court
- 13. Jacuzzi



TOWER A







Burj Khalifa



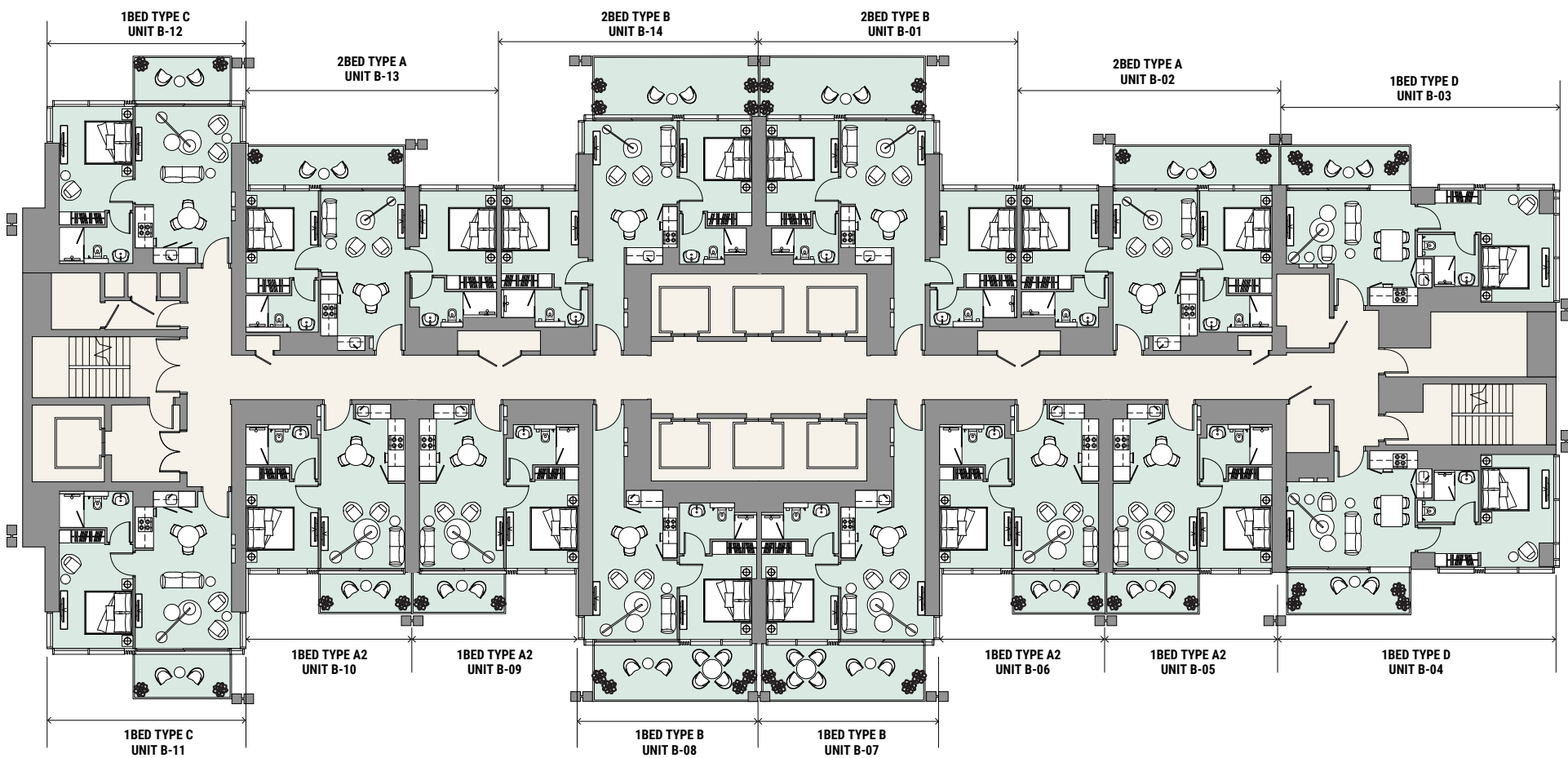
Sheikh Zayed Rd.

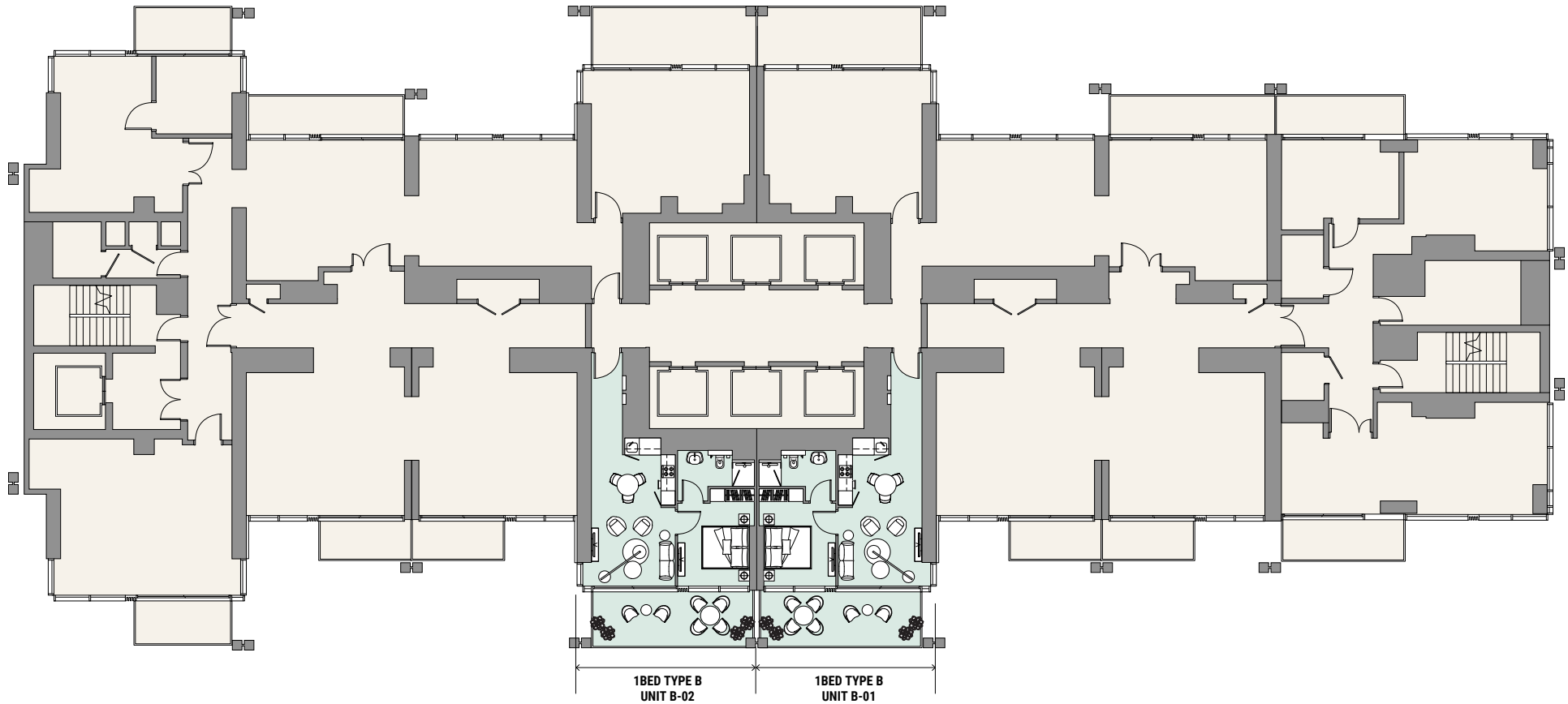


Peninsula / Canal



Cityscape



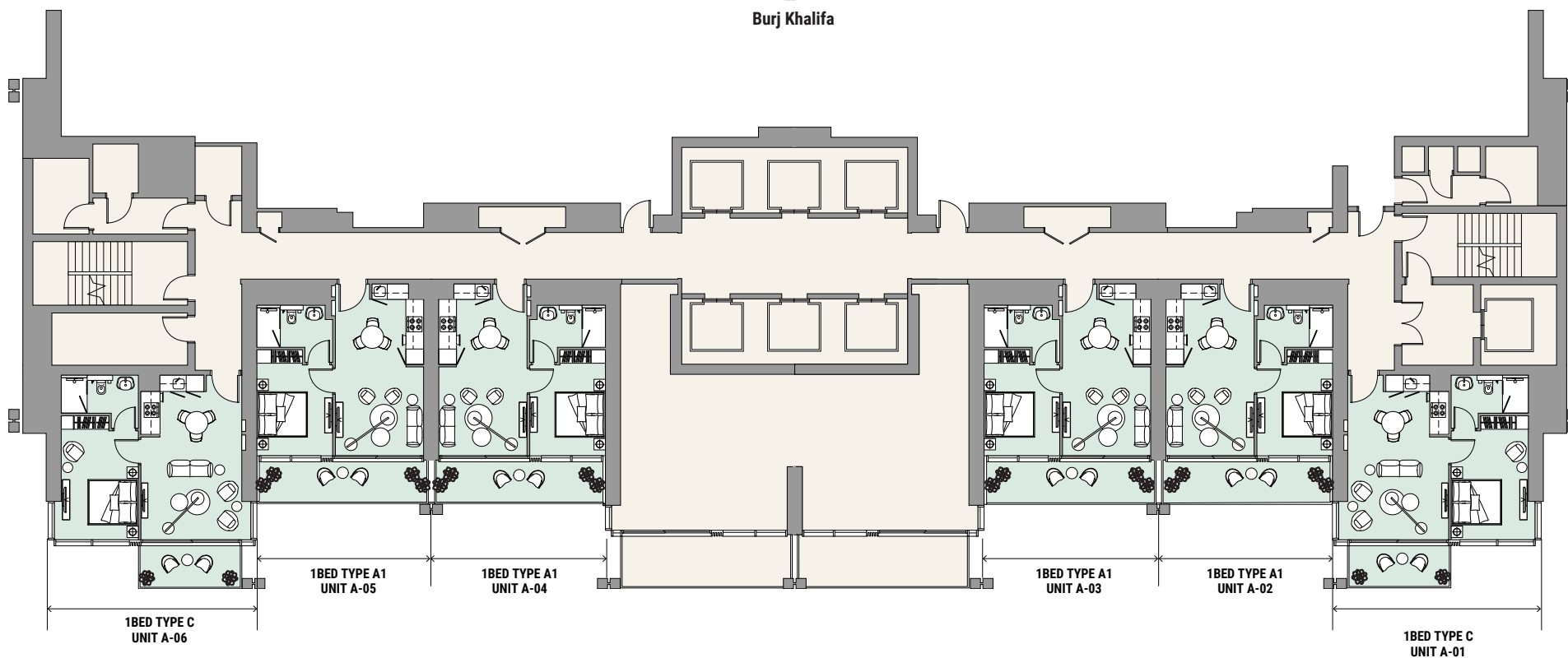




Cityscape



Cityscape



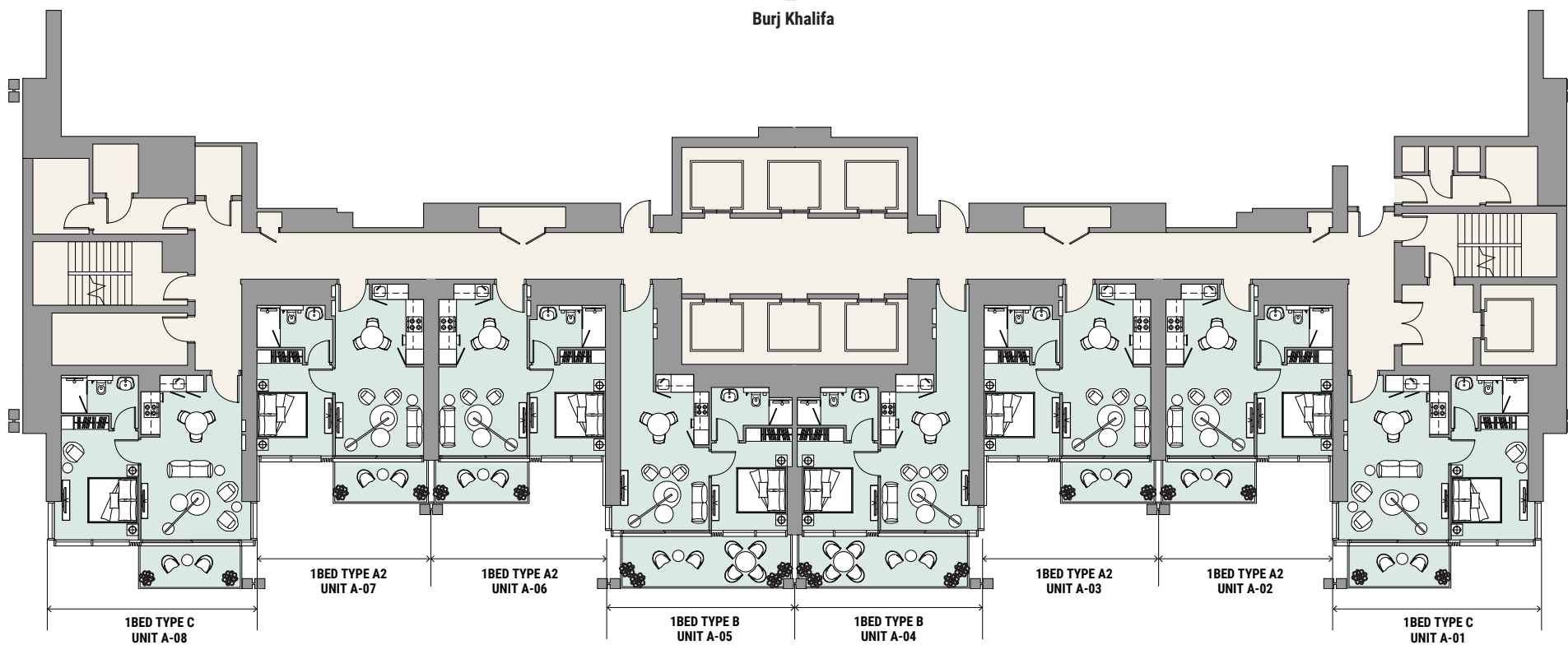
Peninsula / Canal



Cityscape



Cityscape



Peninsula / Canal

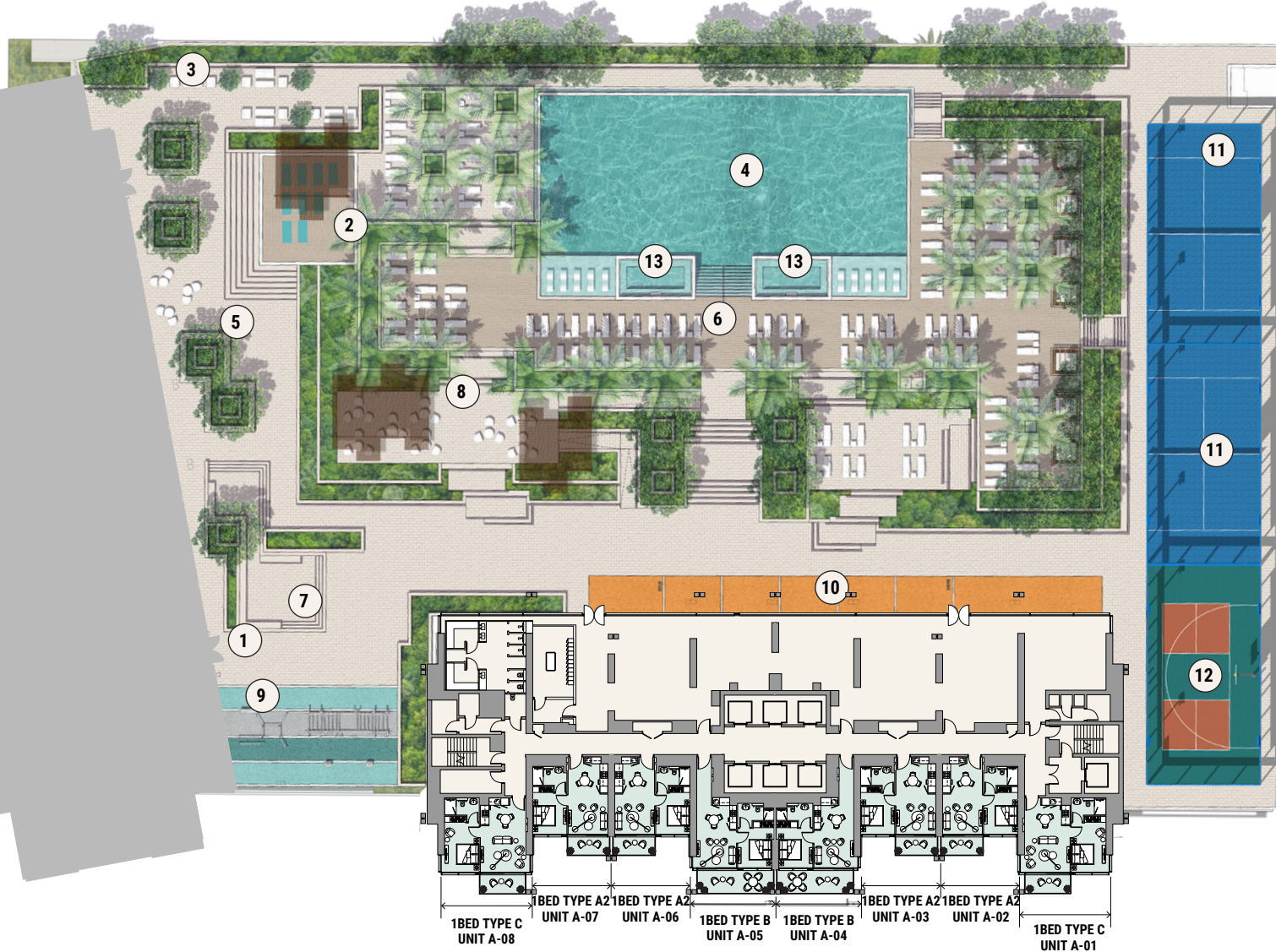


# TOWER A KEYPLAN

Podium Level 4, Pool Deck



TOWER B



- 1. Lobby Entry
- 2. Yoga Deck
- 3. Lounge Area/Outdoor Seating
- 4. Community Pool
- 5. Courtyard
- 6. Pool Deck
- 7. Sunken Seating
- 8. BBQ Area
- 9. Outdoor Fitness Area
- 10. Sprint Track
- 11. Padel Court
- 12. Pickleball/Basketball Court
- 13. Jacuzzi

1BED TYPE C UNIT A-08 | 1BED TYPE A2 UNIT A-07 | 1BED TYPE A2 UNIT A-06 | 1BED TYPE B UNIT A-05 | 1BED TYPE B UNIT A-04 | 1BED TYPE A2 UNIT A-03 | 1BED TYPE A2 UNIT A-02 | 1BED TYPE C UNIT A-01

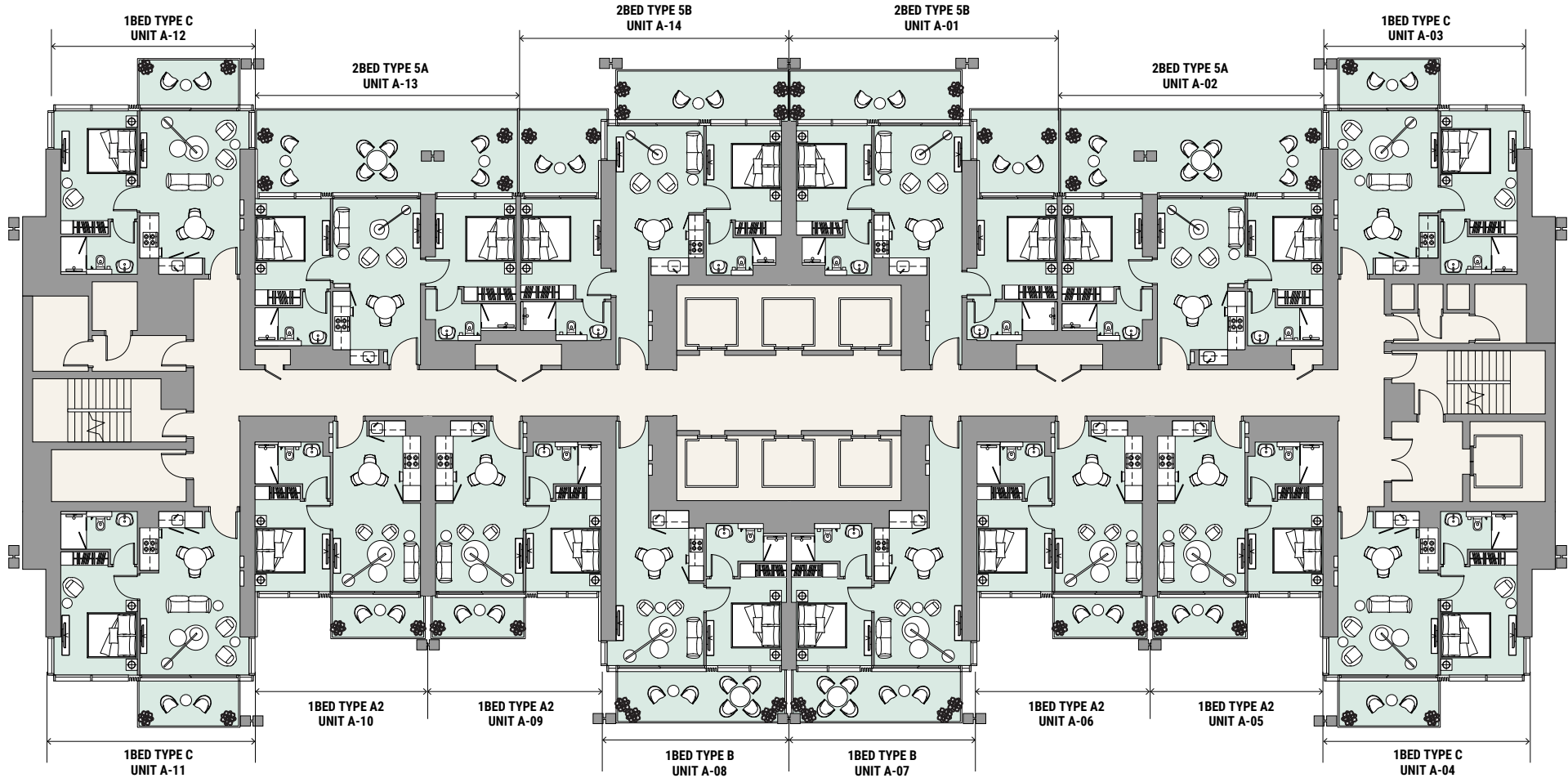
TOWER A



Peninsula / Canal



Burj Khalifa



Cityscape



Cityscape



Peninsula / Canal

# TOWER A KEYPLAN

Levels 6-22 & 24-45, Typical Floor



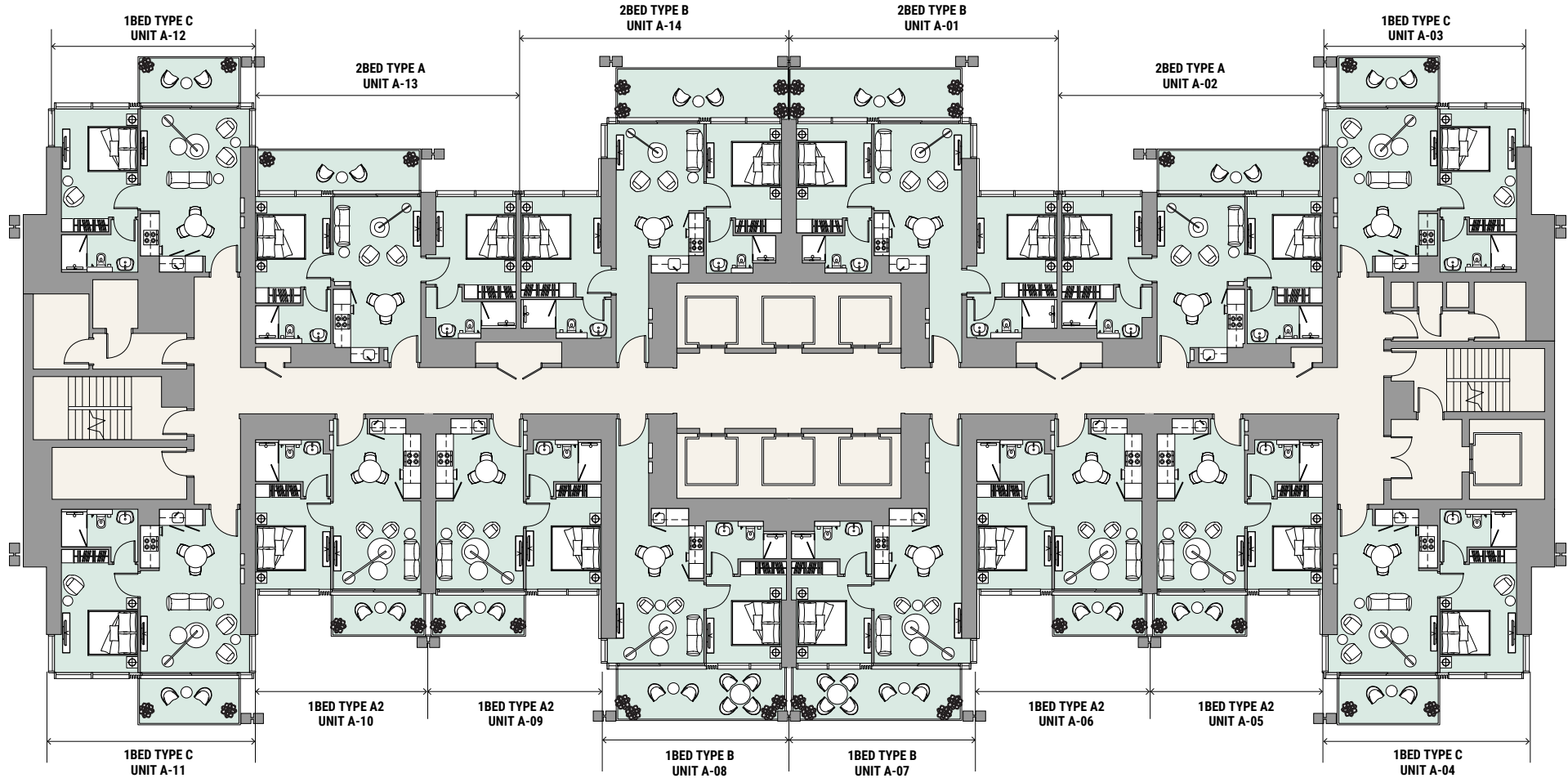
Burj Khalifa



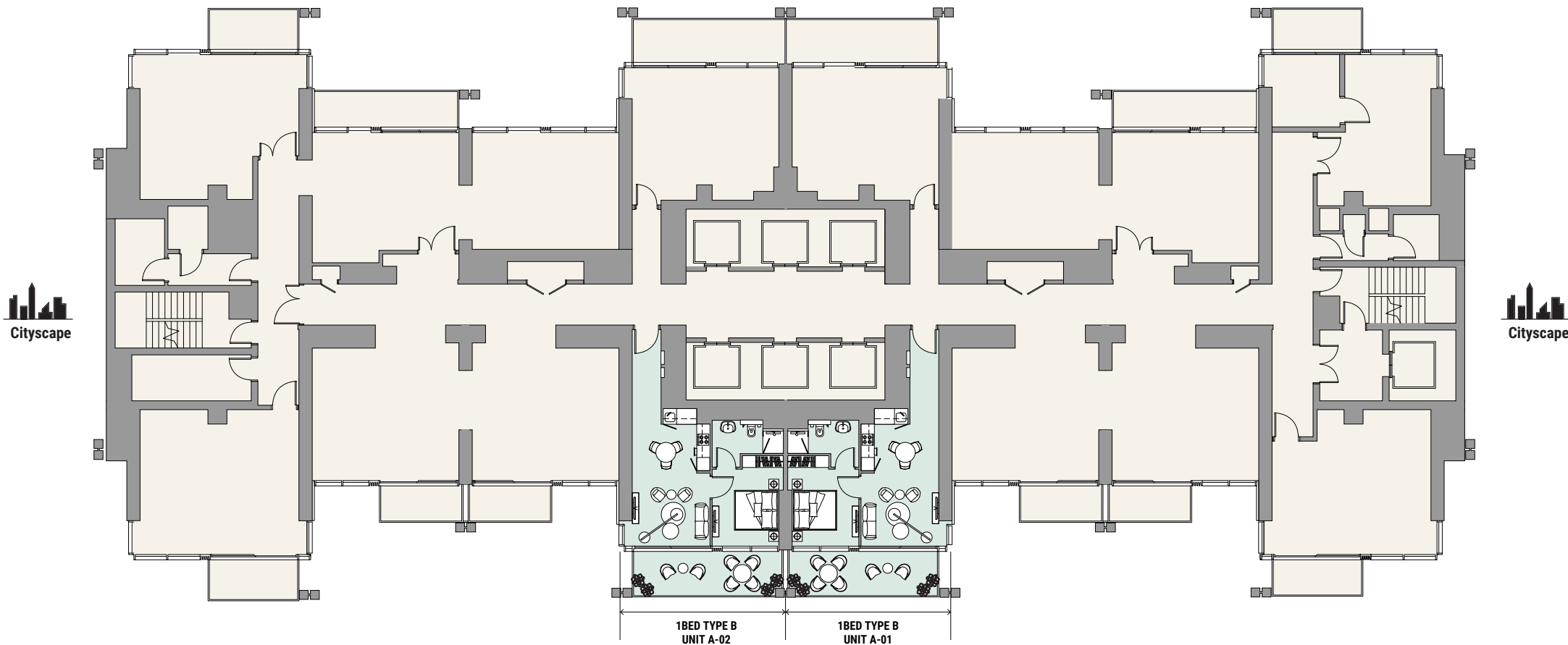
Cityscape



Cityscape



Peninsula / Canal





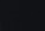
BUY | SELL | RENT | PROPERTY MANAGEMENT SERVICES

GET IN TOUCH WITH US

 **+971 56 818 8610**

 **info@homes4life.ae**

 **Head Office:**  
Office 25 | Oasis Center | Sheikh Zayed Road | Dubai | +971 4 338 7300

 **Branch Office:**  
Retail 1 | Safi Apartments | Town Square Dubai | Dubai | +971 4 398 1528