



ADDRESS  
RESIDENCES  
JUMEIRAH RESORT





LIFT LOBBY



MAIN LOBBY

## ADDRESS RESIDENCES JUMEIRAH RESORT 443 SERVICED APARTMENTS

The essence of breathtaking beachfront living radiates through every aspect and nuance of the 443 Serviced Apartments at Address Residences Jumeirah Resort, from the soothing colour palette to the aqua-inspired accents.

This is delightfully complemented by seamless access to an unparalleled array of state-of-the-art amenities, including the hotel swimming pool located at the ground level, hotel fitness centre on level 75, and accessible on a commercial basis, the hotel spa, in-house dining and hotel's housekeeping services.

ONE-BEDROOM SERVICED APARTMENTS  
From 59sqm to 107sqm / 635sqft to 1,152sqft

TWO-BEDROOM SERVICED APARTMENTS  
From 110sqm to 187sqm / 1,184sqft to 2,012sqft

THREE-BEDROOM SERVICED APARTMENTS  
From 177sqm to 183sqm / 1,905sqft to 1,970sqft

FOUR-BEDROOM SERVICED APARTMENTS  
From 291sqm to 338sqm / 3,132sqft to 3,638sqft

FIVE-BEDROOM SERVICED APARTMENTS  
466sqm / 5016sqft



BEDROOM

## ONE-BEDROOM SERVICED APARTMENTS

Available in a choice of five well-planned layouts, the one-bedroom serviced apartments are chic dwellings that impress in terms of both aesthetics and comfort. In addition to a bedroom with an attached bathroom, these apartments also include a living room with a dining area, an open kitchen, a powder room as well as a balcony in some layouts.

Three of the one-bedroom serviced apartments can be found on the highest levels of the property. With their especially vast balconies, these variants offer a distinctive vantage point to admire spectacular vistas of the city and Dubai Marina.

### FEATURES

59sqm to 107sqm / 635sqft to 1,152sqft

201 one-bedroom serviced apartments

Maximum occupancy: two adults and one child under 12 years

Views of the sea: Types S1G, S1D (partial sea view)

Views of marina / city: Types S1A, S1C, S1F

En-suite bathroom in every bedroom

Furnished and fitted apartments with guest room management system, touchpad switches, branded toilet accessories and fittings

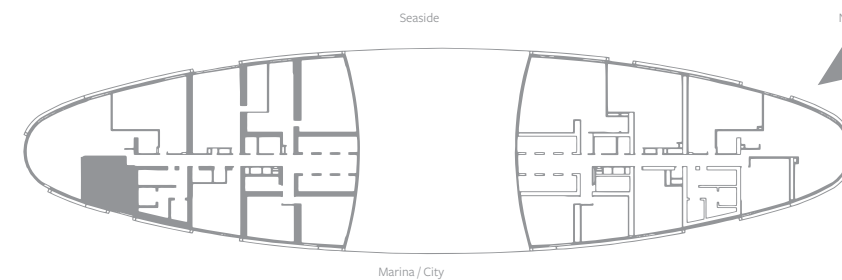
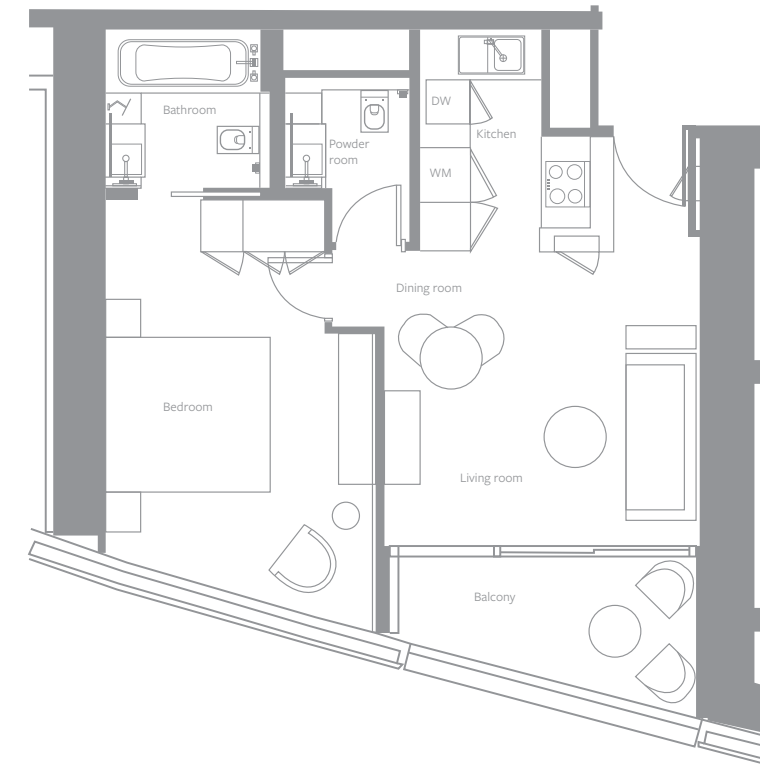
Fully-equipped open kitchen

One car parking space for every apartment



DINING ROOM

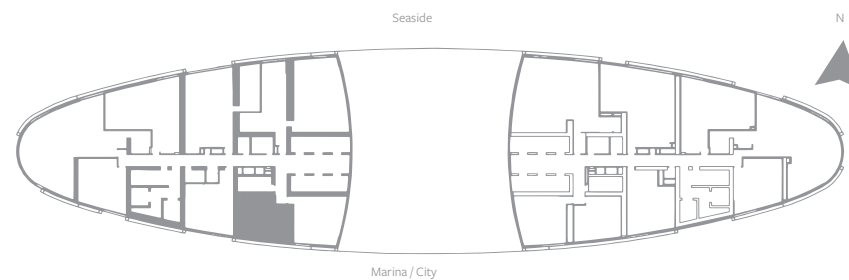
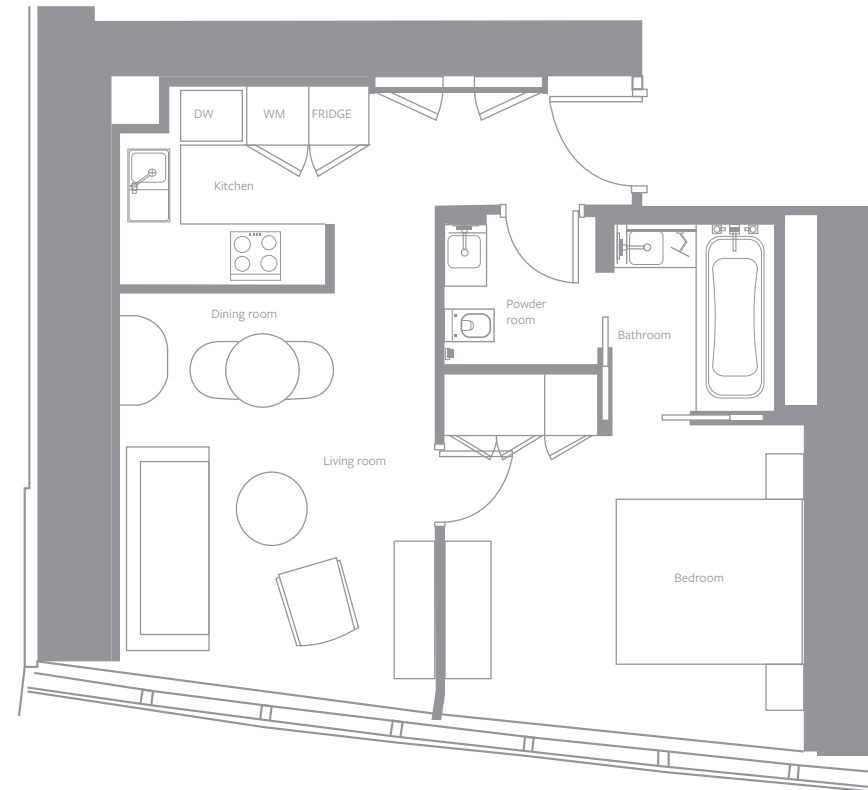
## ONE-BEDROOM SERVICED APARTMENT - TYPE S1A LEVELS: 18 TO 41, 43 TO 72



SELLABLE AREA		
	sq.m	sq.ft
Suite Area	57	614
Balcony Area	8	86
Total Area	65	700

Disclaimer: 1. All materials, dimensions and drawings are approximate. 2. Information is subject to change without notice. 3. Actual suite area may vary from the stated area. 4. Drawings not to scale. 5. The developer reserves the right to make revisions/alterations without any liability whatsoever.

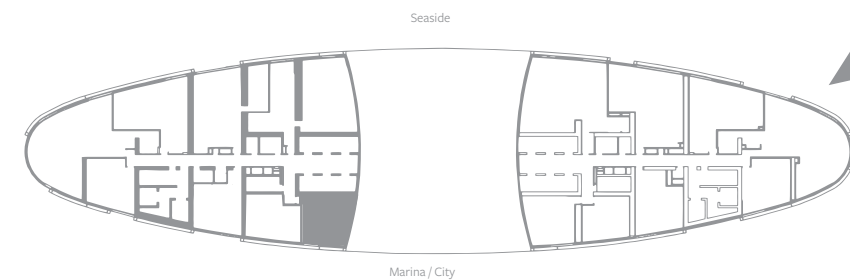
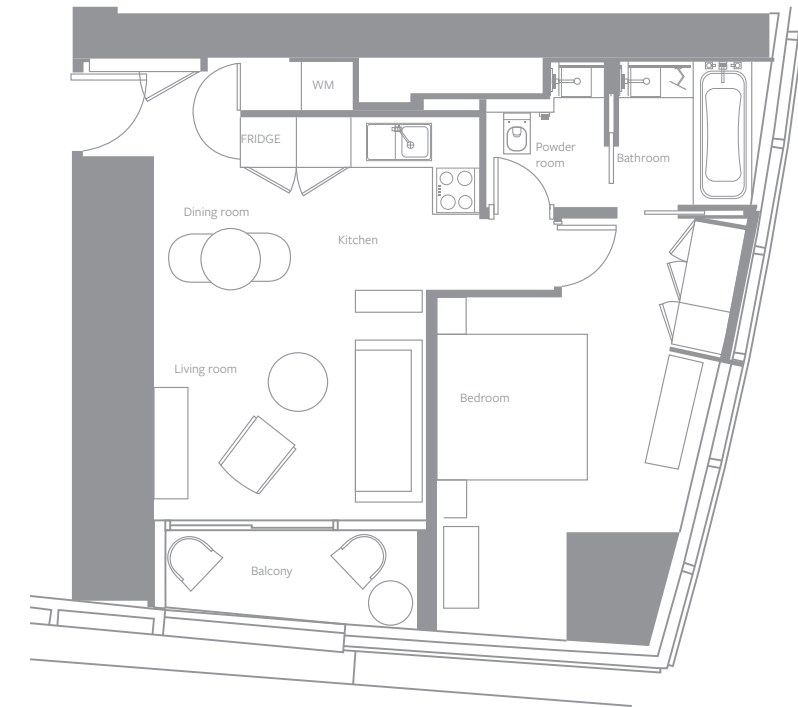
ONE-BEDROOM SERVICED APARTMENT - TYPE S1C  
 LEVELS: 18 TO 41, 43 TO 62



SELLABLE AREA		
	sq.m	sq.ft
Suite Area	59	635
Total Area	59	635

Disclaimer: 1. All materials, dimensions and drawings are approximate. 2. Information is subject to change without notice. 3. Actual suite area may vary from the stated area. 4. Drawings not to scale. 5. The developer reserves the right to make revisions/alterations without any liability whatsoever.

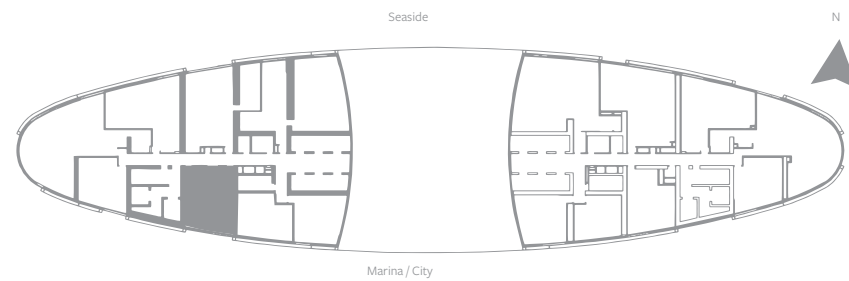
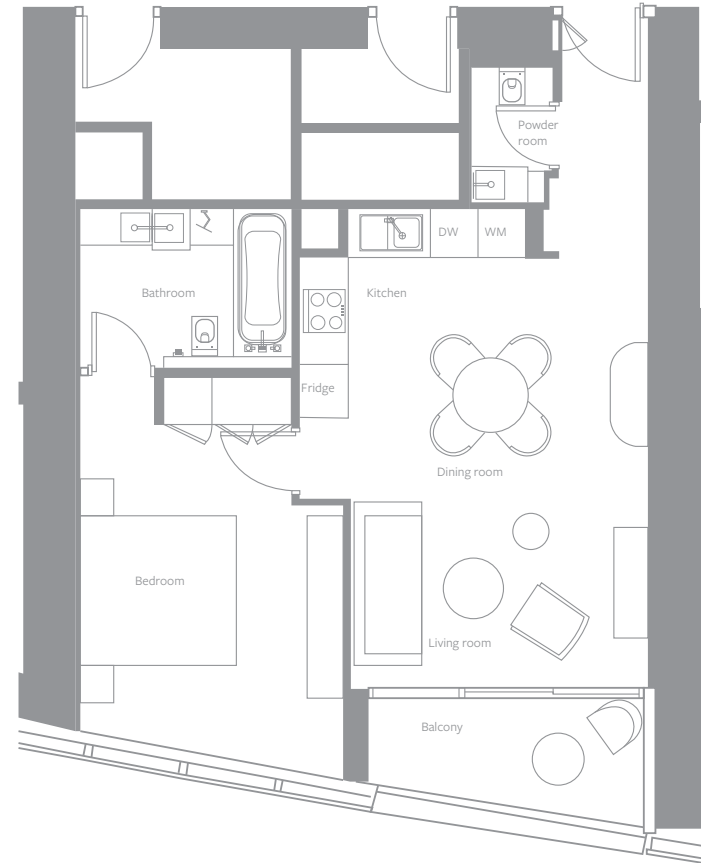
ONE-BEDROOM SERVICED APARTMENT - TYPE S1D  
 LEVELS: 18 TO 41, 43 TO 62



SELLABLE AREA		
	sq.m	sq.ft
Suite Area	64 - 65	689 - 700
Balcony Area	7	75
Total Area	71 - 72	764 - 775

Disclaimer: 1. All materials, dimensions and drawings are approximate. 2. Information is subject to change without notice. 3. Actual suite area may vary from the stated area. 4. Drawings not to scale. 5. The developer reserves the right to make revisions/alterations without any liability whatsoever.

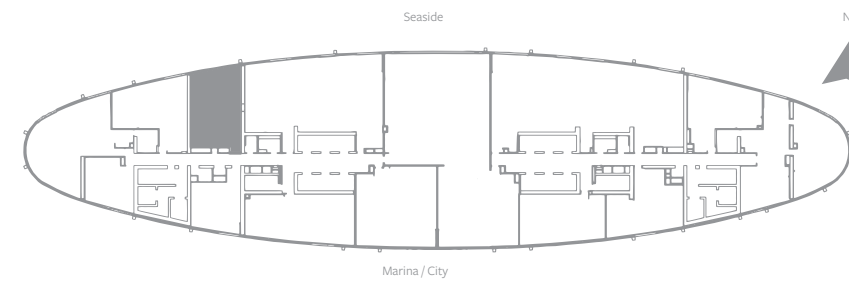
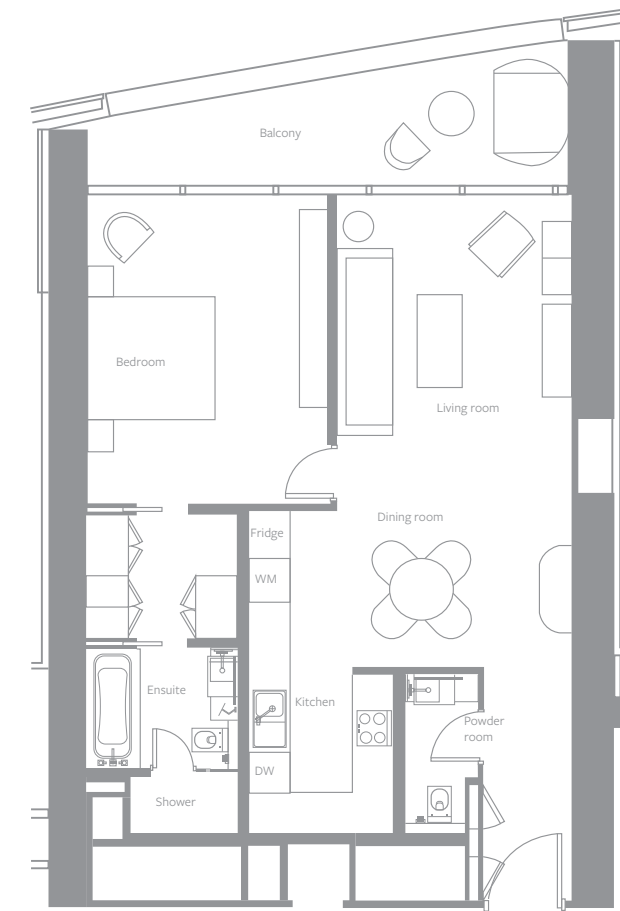
ONE-BEDROOM SERVICED APARTMENT - TYPE S1F  
 LEVELS: 18 TO 41, 43 TO 72



SELLABLE AREA		
	sq.m	sq.ft
Suite Area	68 - 75	731 - 807
Balcony Area	7	75
Total Area	75 - 82	806 - 882

Disclaimer: 1. All materials, dimensions and drawings are approximate. 2. Information is subject to change without notice. 3. Actual suite area may vary from the stated area. 4. Drawings not to scale. 5. The developer reserves the right to make revisions/alterations without any liability whatsoever.

ONE-BEDROOM SERVICED APARTMENT - TYPE S1G  
 LEVELS: 68 TO 72



SELLABLE AREA		
	sq.m	sq.ft
Suite Area	91	980
Balcony Area	16	172
Total Area	107	1152

Disclaimer: 1. All materials, dimensions and drawings are approximate. 2. Information is subject to change without notice. 3. Actual suite area may vary from the stated area. 4. Drawings not to scale. 5. The developer reserves the right to make revisions/alterations without any liability whatsoever.





BEDROOM

## TWO-BEDROOM SERVICED APARTMENTS

From their ornate interiors to the panoramic views they offer, the two-bedroom serviced apartments are captivating in every sense. Intelligently conceptualised across seven different layouts, these homes feature an especially generous dining area as well as a maid's room with an attached bathroom and an additional balcony in some instances.

The variants on the upper levels are a cut above with their striking spaciousness, exquisite appointments, and especially large balconies which can easily accommodate a dining area

## FEATURES

110sqm to 187sqm / 1,184sqft to 2,012sqft

130 two-bedroom serviced apartments

Maximum occupancy: four adults and one child under 12 years or three adults and two children under 12 years

Views of the sea: Types S2A, S2C, S2D, S2E

Views of marina / city: Types S2J, S2K, S2L

En-suite bathroom in every bedroom

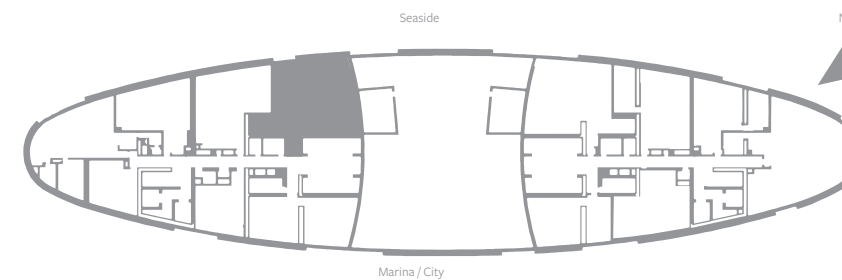
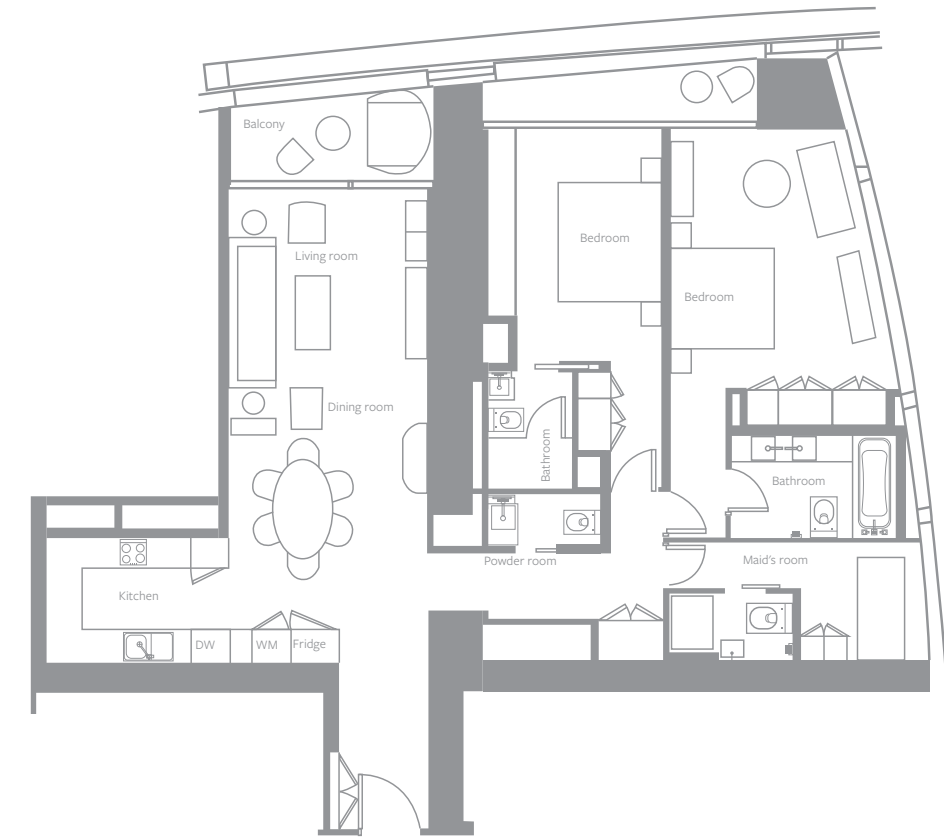
Furnished and fitted apartments with guest room management system, touchpad switches, branded toilet accessories and fittings, and fully-equipped open kitchen

One car parking space for every apartment



BATHROOM

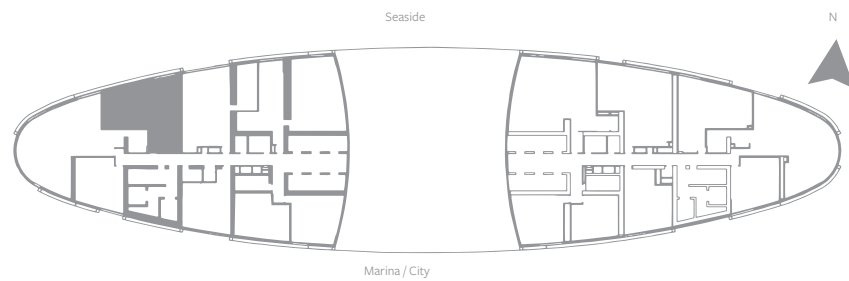
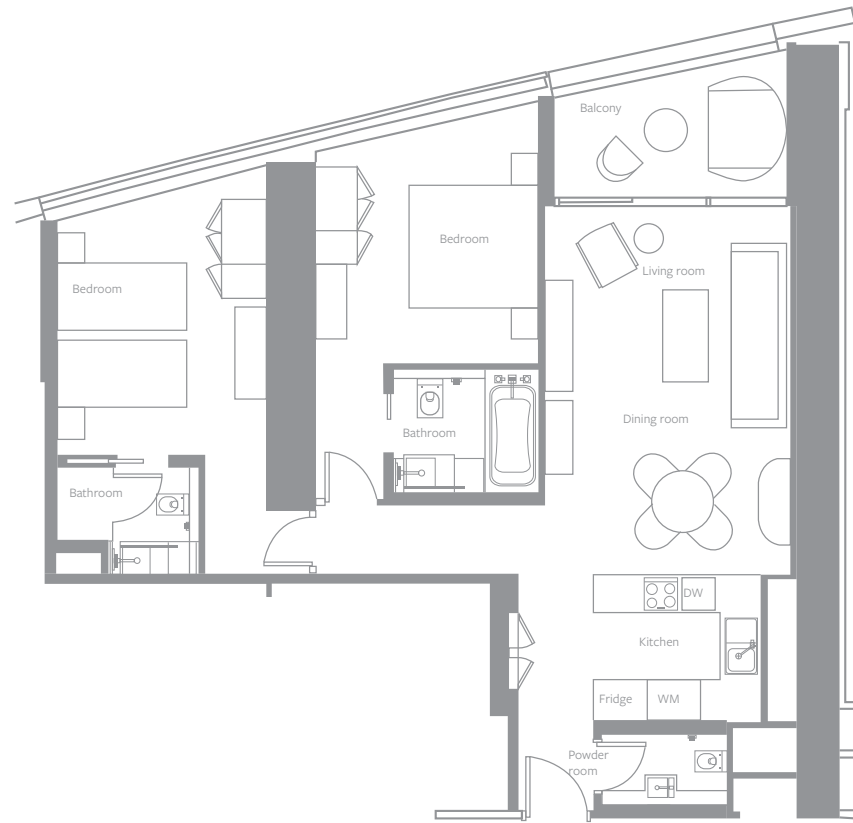
## TWO-BEDROOM SERVICED APARTMENT - TYPE S2A LEVEL: 63



SELLABLE AREA		
	sq.m	sq.ft
Suite Area	163	1754
Balcony Area	21	226
Total Area	184	1980

Disclaimer: 1. All materials, dimensions and drawings are approximate. 2. Information is subject to change without notice. 3. Actual suite area may vary from the stated area. 4. Drawings not to scale. 5. The developer reserves the right to make revisions/alterations without any liability whatsoever.

TWO-BEDROOM SERVICED APARTMENT - TYPE S2C  
LEVELS: 18 TO 41, 43 TO 72

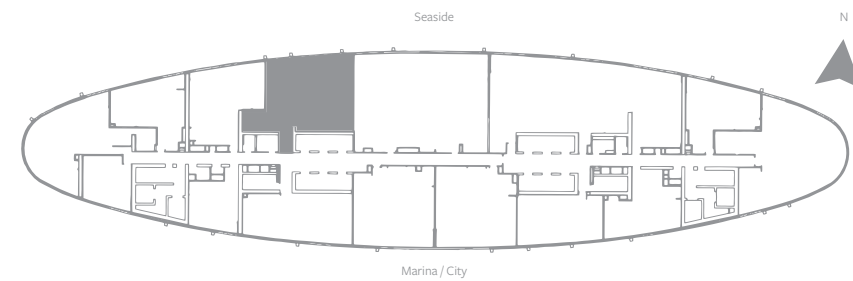
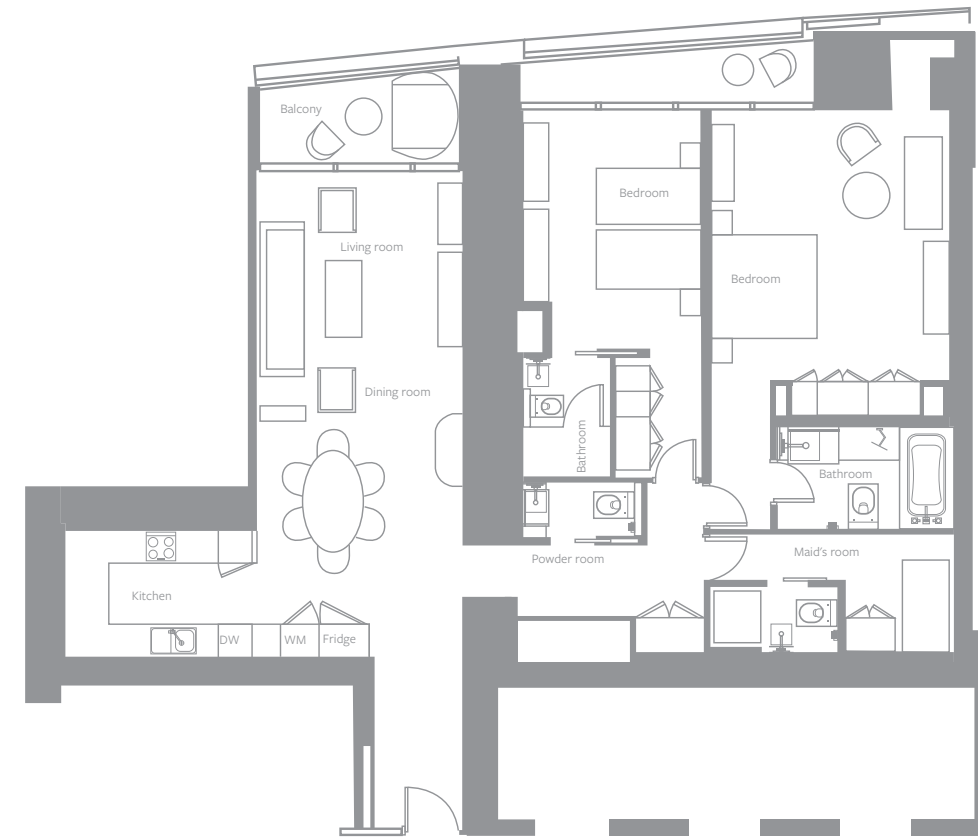


SELLABLE AREA

	sq.m	sq.ft
Suite Area	99 - 100	1066 - 1076
Balcony Area	10	107
Total Area	109 - 110	1173 - 1183

Disclaimer: 1. All materials, dimensions and drawings are approximate. 2. Information is subject to change without notice. 3. Actual suite area may vary from the stated area. 4. Drawings not to scale. 5. The developer reserves the right to make revisions/alterations without any liability whatsoever.

TWO-BEDROOM SERVICED APARTMENT - TYPE S2D  
LEVELS: 64 TO 67

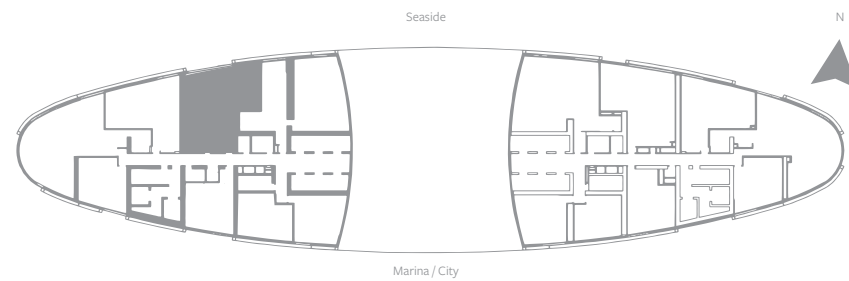
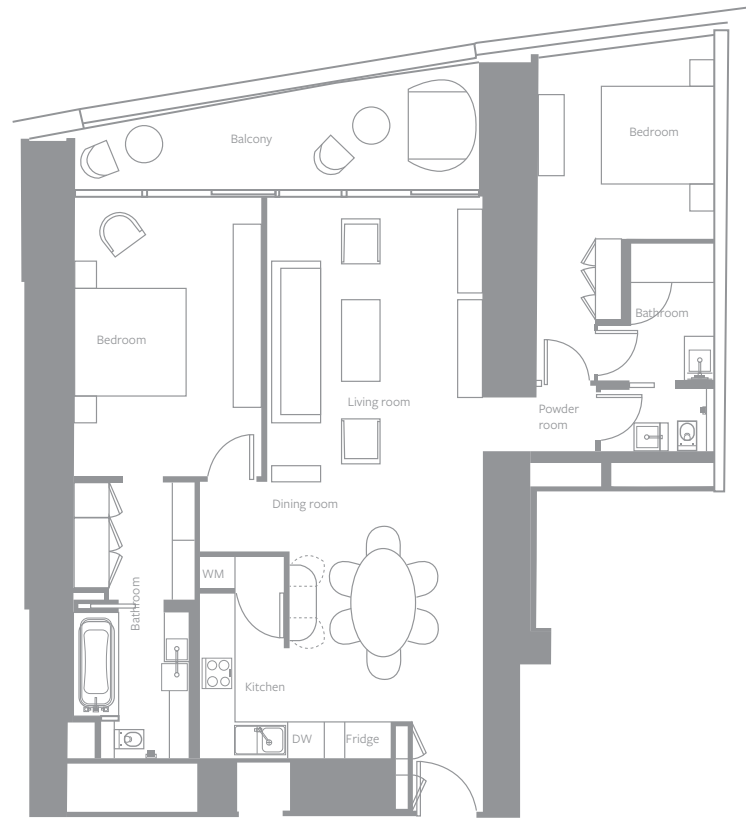


SELLABLE AREA

	sq.m	sq.ft
Suite Area	165	1776
Balcony Area	22	236
Total Area	187	2012

Disclaimer: 1. All materials, dimensions and drawings are approximate. 2. Information is subject to change without notice. 3. Actual suite area may vary from the stated area. 4. Drawings not to scale. 5. The developer reserves the right to make revisions/alterations without any liability whatsoever.

TWO-BEDROOM SERVICED APARTMENT - TYPE S2E  
LEVELS: 18 TO 41, 43 TO 67

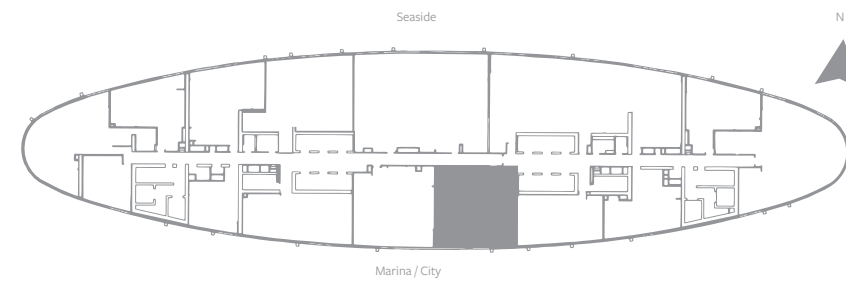
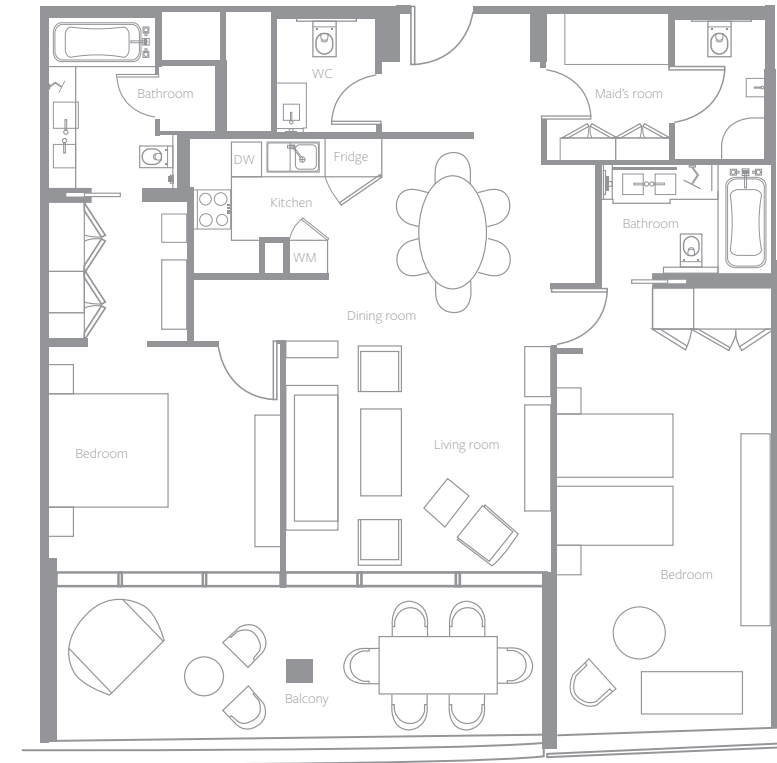


SELLABLE AREA

	sq.m	sq.ft
Suite Area	123 - 124	1324 - 1334
Balcony Area	16 - 17	172 - 183
Total Area	139 - 141	1496 - 1517

Disclaimer: 1. All materials, dimensions and drawings are approximate. 2. Information is subject to change without notice. 3. Actual suite area may vary from the stated area. 4. Drawings not to scale. 5. The developer reserves the right to make revisions/alterations without any liability whatsoever.

TWO-BEDROOM SERVICED APARTMENT - TYPE S2J  
LEVELS: 64 TO 67



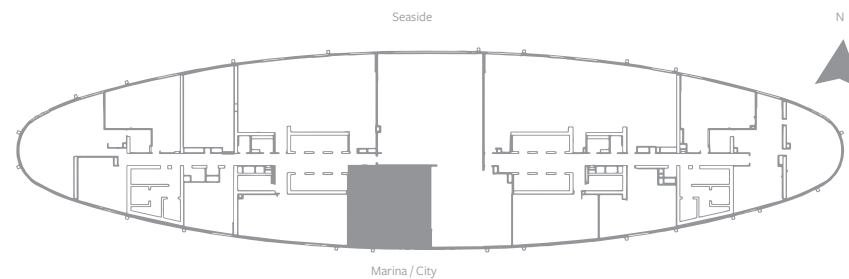
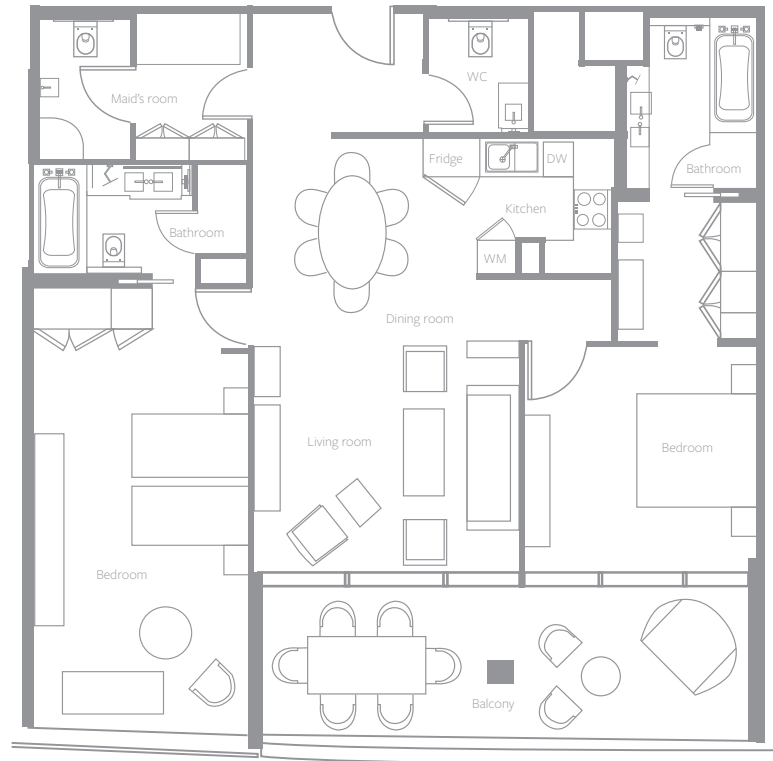
SELLABLE AREA

	sq.m	sq.ft
Suite Area	140	1507
Balcony Area	26	279
Total Area	166	1786

Disclaimer: 1. All materials, dimensions and drawings are approximate. 2. Information is subject to change without notice. 3. Actual suite area may vary from the stated area. 4. Drawings not to scale. 5. The developer reserves the right to make revisions/alterations without any liability whatsoever.



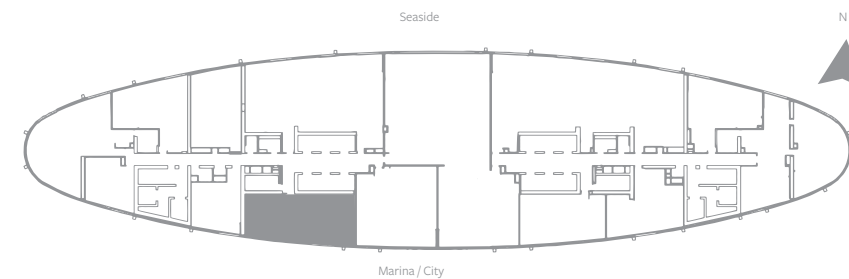
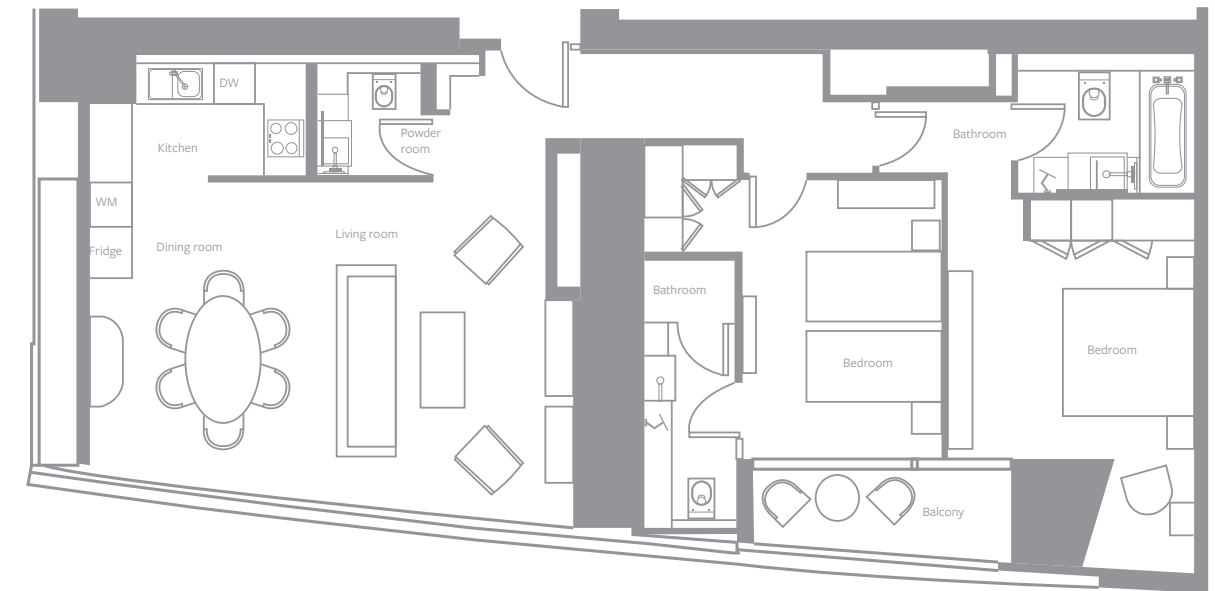
TWO-BEDROOM SERVICED APARTMENT - TYPE S2K  
LEVELS: 64 TO 72



SELLABLE AREA		
	sq.m	sq.ft
Suite Area	140	1507
Balcony Area	26	279
Total Area	166	1786

Disclaimer: 1. All materials, dimensions and drawings are approximate. 2. Information is subject to change without notice. 3. Actual suite area may vary from the stated area. 4. Drawings not to scale. 5. The developer reserves the right to make revisions/alterations without any liability whatsoever.

TWO-BEDROOM SERVICED APARTMENT - TYPE S2L  
LEVELS: 64 TO 72



SELLABLE AREA		
	sq.m	sq.ft
Suite Area	133	1432
Balcony Area	7	75
Total Area	140	1507

Disclaimer: 1. All materials, dimensions and drawings are approximate. 2. Information is subject to change without notice. 3. Actual suite area may vary from the stated area. 4. Drawings not to scale. 5. The developer reserves the right to make revisions/alterations without any liability whatsoever.



LIVING ROOM



DINING ROOM

## THREE-BEDROOM SERVICED APARTMENTS

The three-bedroom serviced apartments are available in a choice of two variants that make inventive use of contemporary design to augment the aesthetic appeal and sense of space in every room. Both variants feature two balconies and a maid's room with an attached bathroom.

### FEATURES

177sqm to 183sqm / 1,905sqft to 1,970sqft

98 three-bedroom serviced apartments

Maximum occupancy: six adults and one child under 12 years or five adults and two children under 12 years

Views of the sea and marina / city: Type S3A

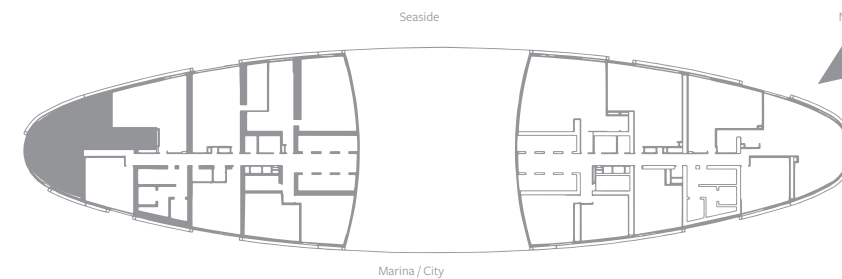
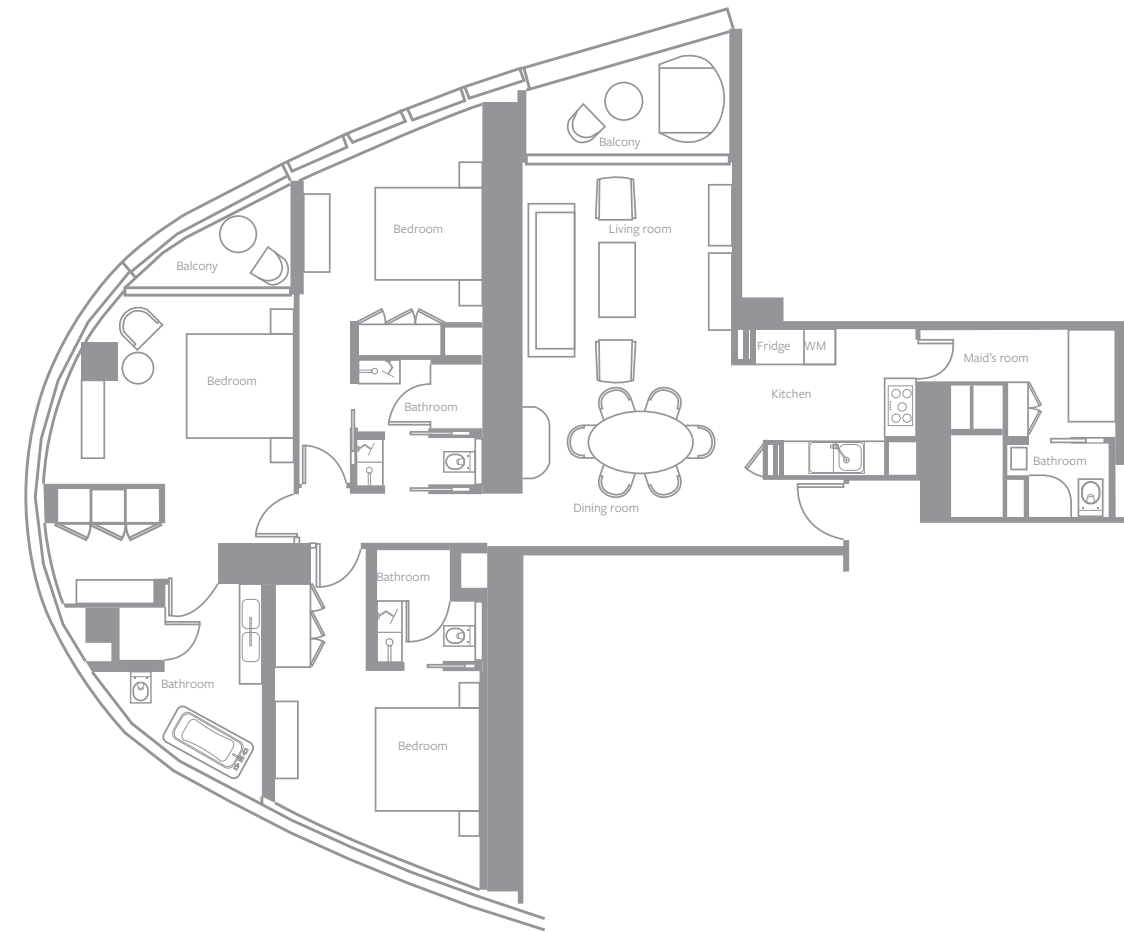
Views of the sea : Type S3B

En-suite bathroom in every bedroom

Furnished and fitted apartments with guest room management system, touchpad switches, branded toilet accessories and fittings, and fully-equipped open kitchen

Two car parking spaces for every apartment

## THREE-BEDROOM SERVICED APARTMENT - TYPE S3A LEVELS: 18 TO 41, 43 TO 72

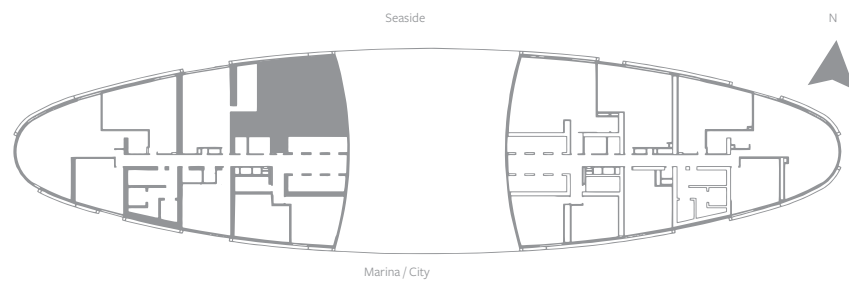
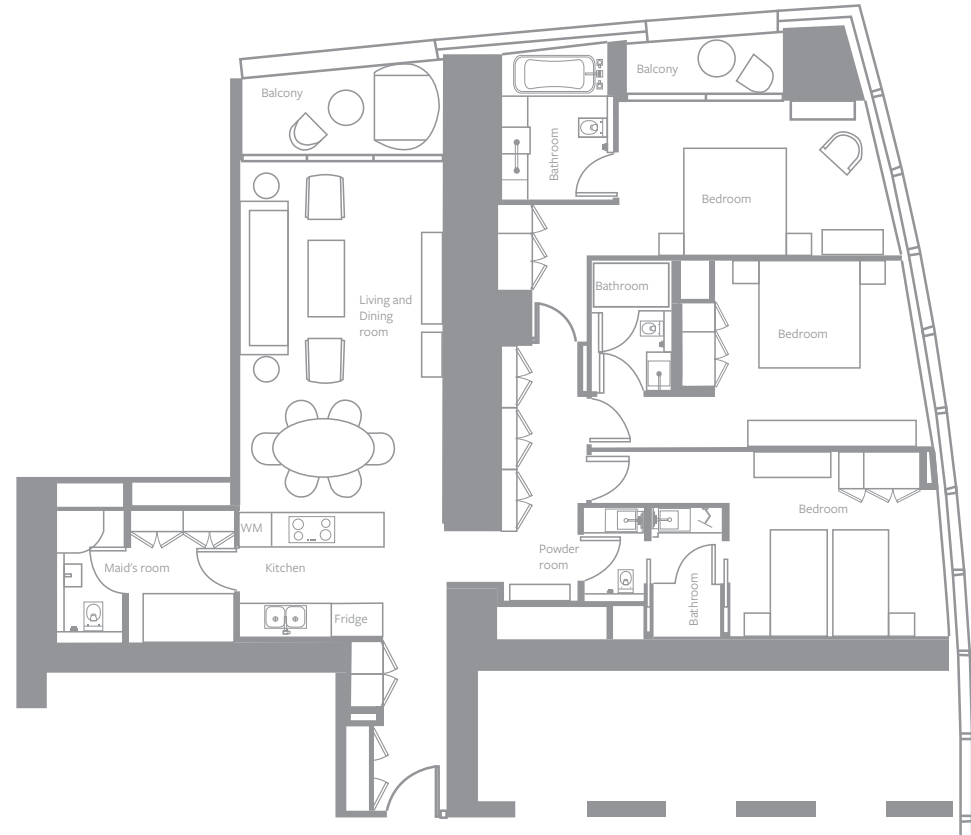


SELLABLE AREA		
	sq.m	sq.ft
Suite Area	162 - 163	1744 - 1754
Balcony Area	14	151
Total Area	176 - 177	1895 - 1905

Disclaimer: 1. All materials, dimensions and drawings are approximate. 2. Information is subject to change without notice. 3. Actual suite area may vary from the stated area. 4. Drawings not to scale. 5. The developer reserves the right to make revisions/alterations without any liability whatsoever.



THREE-BEDROOM SERVICED APARTMENT - TYPE S3B  
 LEVELS: 18 TO 41, 43 TO 62



SELLABLE AREA

	sq.m	sq.ft
Suite Area	166 - 167	1787 - 1798
Balcony Area	16 - 17	172 - 183
Total Area	182 - 184	1959 - 1981

Disclaimer: 1. All materials, dimensions and drawings are approximate. 2. Information is subject to change without notice. 3. Actual suite area may vary from the stated area. 4. Drawings not to scale. 5. The developer reserves the right to make revisions/alterations without any liability whatsoever.







BEDROOM

## FOUR-BEDROOM SERVICED APARTMENTS

The four-bedroom serviced apartments at Address Residences Jumeirah Resort have been brilliantly envisioned to optimise their extensive area across both private and communal spaces. Both variants are on the highest levels of the property, from levels 64 to 72, and only a few units are available of each.

The balcony in the larger variant is especially lavish, with ample seating. A walk-in closet in the master bedroom is included in this variant only.

### FEATURES

291sqm to 338sqm / 3,132sqft to 3,638sqft

Nine four-bedroom serviced apartments

Maximum occupancy: eight adults and one child under 12 years or seven adults and two children under 12 years

Views of the sea: Type S4B (from levels 64 to 67), S4C (from levels 68 to 72)

En-suite bathroom in every bedroom

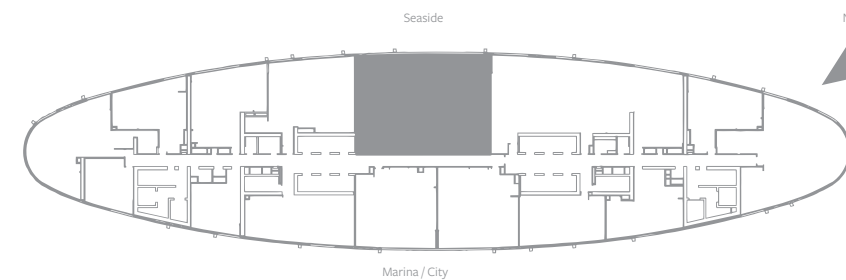
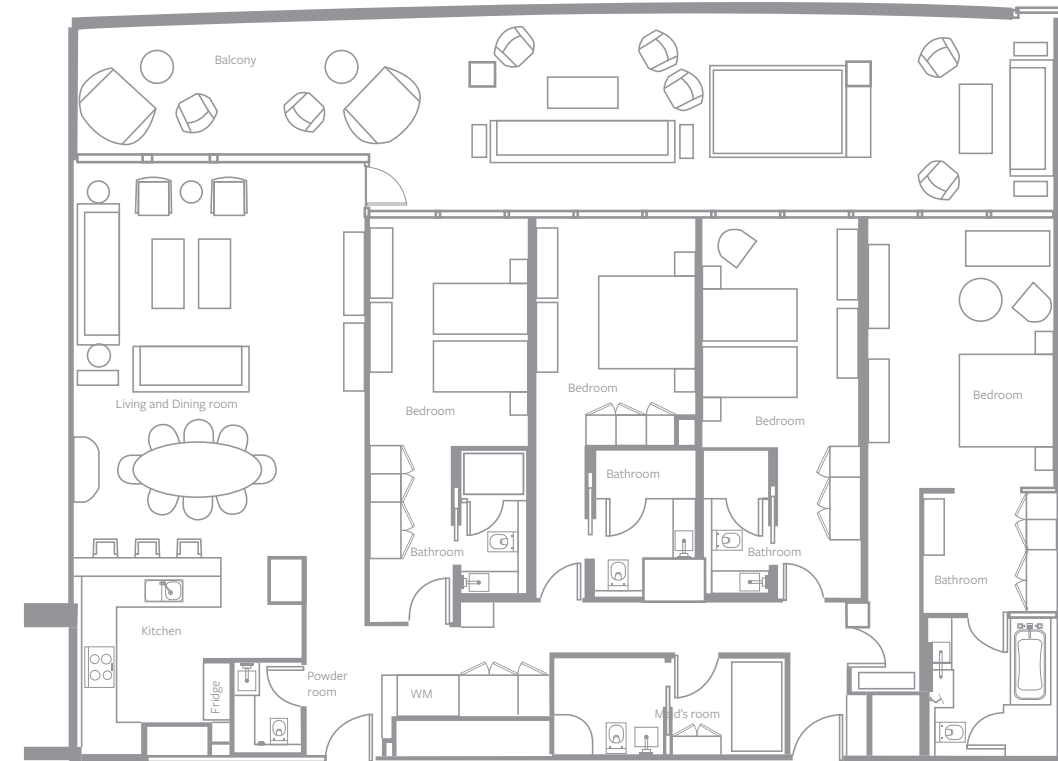
Furnished and fitted apartments with guest room management system, touchpad switches, branded toilet accessories and fittings, and fully-equipped open kitchen

Two car parking spaces for every apartment



LIVING ROOM

## FOUR-BEDROOM SERVICED APARTMENT - TYPE S4B LEVELS: 64 TO 67

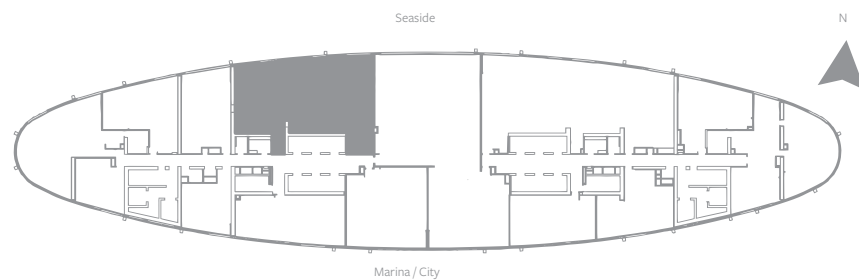
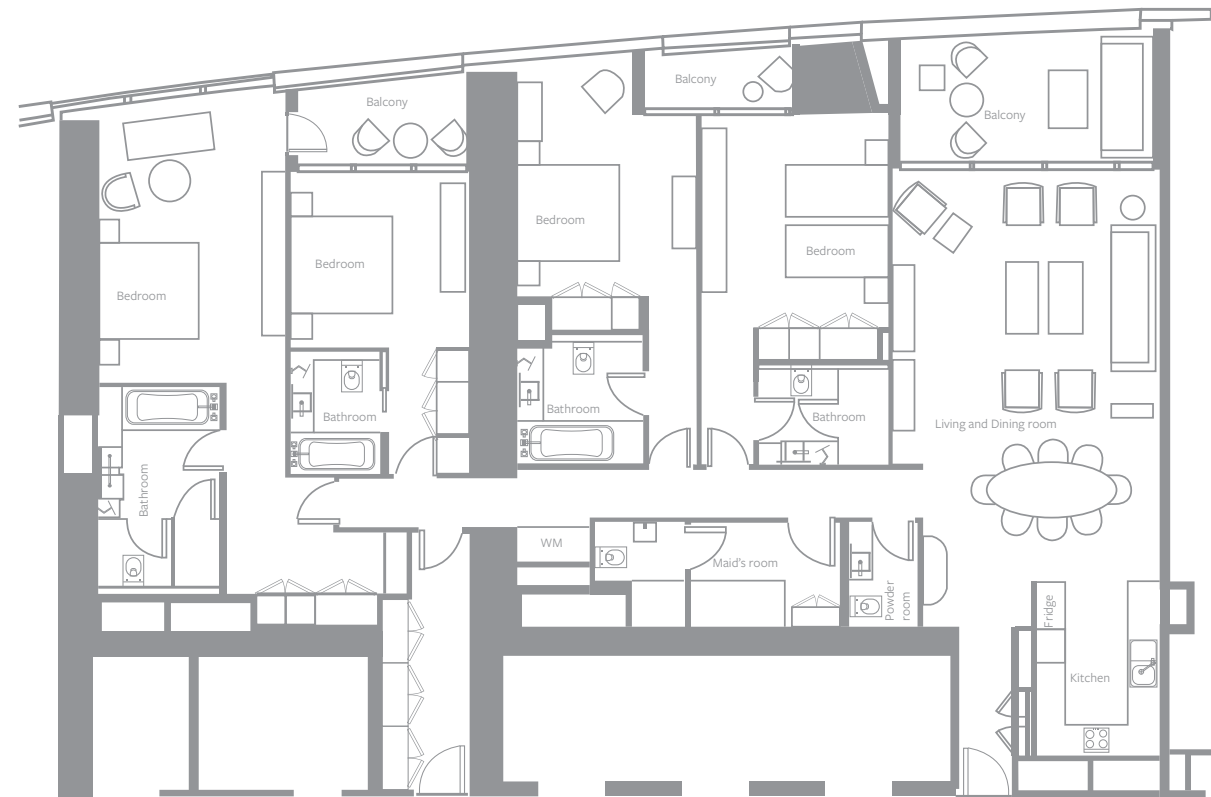


SELLABLE AREA		
	sq.m	sq.ft
Suite Area	256	2756
Balcony Area	83	893
Total Area	339	3649

Disclaimer: 1. All materials, dimensions and drawings are approximate. 2. Information is subject to change without notice. 3. Actual suite area may vary from the stated area. 4. Drawings not to scale. 5. The developer reserves the right to make revisions/alterations without any liability whatsoever.



FOUR-BEDROOM SERVICED APARTMENT - TYPE S4C  
LEVELS: 68 TO 72



SELLABLE AREA

	sq.m	sq.ft
Suite Area	259	2788
Balcony Area	32	344
Total Area	291	3132

Disclaimer: 1. All materials, dimensions and drawings are approximate. 2. Information is subject to change without notice. 3. Actual suite area may vary from the stated area. 4. Drawings not to scale. 5. The developer reserves the right to make revisions/alterations without any liability whatsoever.





LIVING ROOM



BATHROOM

## FIVE-BEDROOM SERVICED APARTMENTS

Exclusively situated on levels 68 to 72, the five-bedroom serviced apartment is the largest home at Address Residences Jumeirah Resort. The matchless abode is uniquely positioned at the centre of the bridge that connects the two towers, and covers the entire length of the level, assuring the most comprehensive views of the beach and city surroundings from a balcony on one side and an expansive terrace on the other.

Its size is lavishly evidenced across five plushly furnished bedrooms, two magnificent living rooms and an extensive hallway that essentially divides the home across the centre, directly across from the main entrance. The remarkable apartment also features a vast kitchen that overlooks the larger living room from one side, a maid's room with an attached bathroom as well as a private study.

### FEATURES

466sqm / 5,016sqft

Five five-bedroom serviced apartments

Maximum occupancy: ten adults and one child under 12 years or nine adults and two children under 12 years

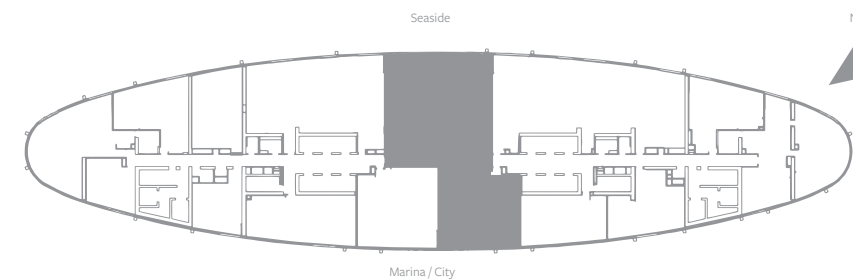
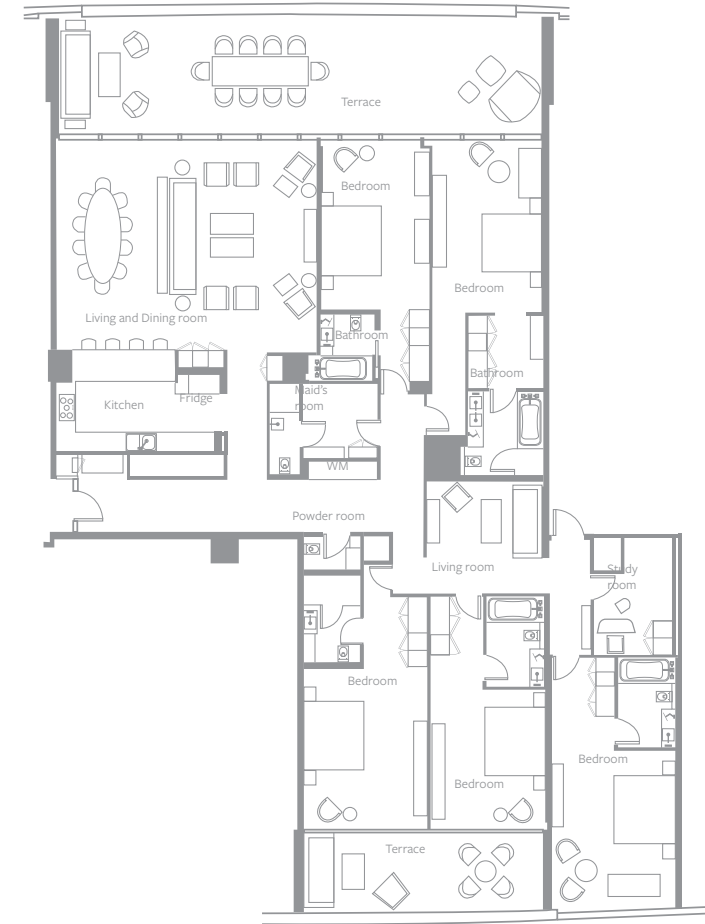
Views of the sea and marina / city: Type S5B (from levels 68 to 72)

En-suite bathroom in every bedroom

Furnished and fitted apartments with guest room management system, touchpad switches, branded toilet accessories and fittings, and fully-equipped open kitchen

Two car parking spaces for every apartment

## FIVE-BEDROOM SERVICED APARTMENT - TYPE S5B LEVELS: 68 TO 72



SELLABLE AREA		
	sq.m	sq.ft
Suite Area	367	3950
Balcony Area	99	1066
Total Area	466	5016

Disclaimer: 1. All materials, dimensions and drawings are approximate. 2. Information is subject to change without notice. 3. Actual suite area may vary from the stated area. 4. Drawings not to scale. 5. The developer reserves the right to make revisions/alterations without any liability whatsoever.





LIFT LOBBY



MAIN LOBBY

## THE RESIDENCES JUMEIRAH RESORT BY ADDRESS 478 RESIDENTIAL APARTMENTS

For connoisseurs of luxury who desire an exquisite beachfront abode at the confluence of awe-inspiring natural beauty and contemporary luxury, The Residences Jumeirah Resort by Address, rises to the occasion with a spectacular array of 478 residences. Immerse yourself in the spirit of 'La Dolce Vita' with avant-garde interiors that reflect the brilliance of the surrounding cityscape and unfettered access to a unique variety of amenities, including direct beach access, a swimming pool located at Podium L1 and an ultramodern gymnasium located at Podium L1.

### ONE-BEDROOM RESIDENCES

From 59sqm to 80sqm / 635sqft to 861sqft

### TWO-BEDROOM RESIDENCES

From 107sqm to 184sqm / 1,151sqft to 1,981sqft

### THREE-BEDROOM RESIDENCES

From 176sqm to 256sqm / 1,894sqft to 2,755sqft

### FOUR-BEDROOM RESIDENCES

From 241sqm / 2,594sqft

### FIVE-BEDROOM RESIDENCES

From 399sqm / 4,295sqft



BEDROOM



LIVING ROOM

## ONE-BEDROOM RESIDENCES

The one-bedroom abodes at The Residences Jumeirah Resort by Address, present refreshingly modern perspectives on contemporary beachfront living for up to two adults and one child across six imaginative layouts. Each variant comfortably accommodates a welcoming bedroom with an attached bathroom, an elegant living room, a powder room and an open kitchen. A balcony is also included in some options.

### FEATURES

59sqm to 80sqm / 635sqft to 861sqft

152 one-bedroom residences

Maximum occupancy: two adults and one child under 12 years

Views of the sea (partial) and city: Type R1D (levels 13 to 16, 18 to 41)

Views of marina / city: Types R1A, R1B, R1C, R1D (levels 3 to 8, 11 to 12), R1E

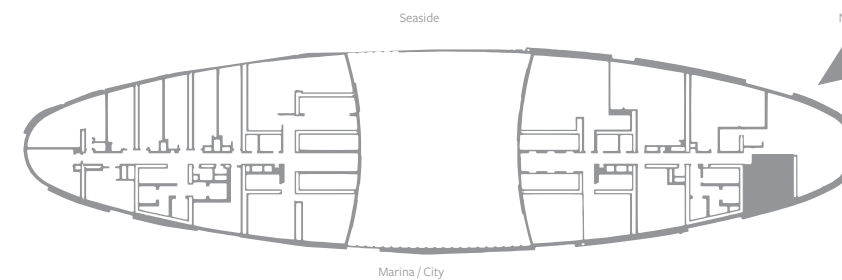
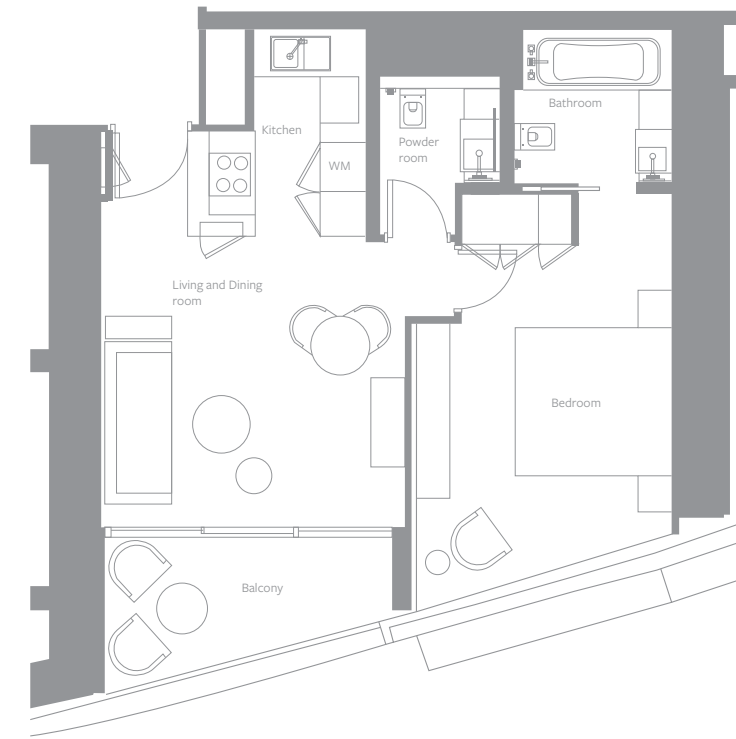
En-suite bathroom in every bedroom

Built-in wardrobes in every bedroom

Kitchen cabinets with worktop complete with hood, kitchen sink, and mixer tap

One car parking space for every residence

## ONE-BEDROOM RESIDENCE - TYPE R1A LEVELS: 3 TO 16, 18 TO 41

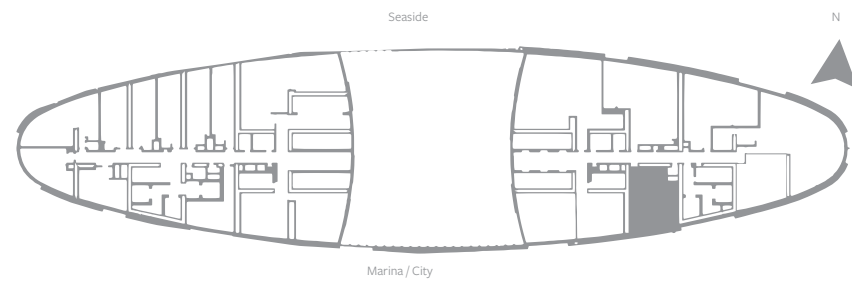
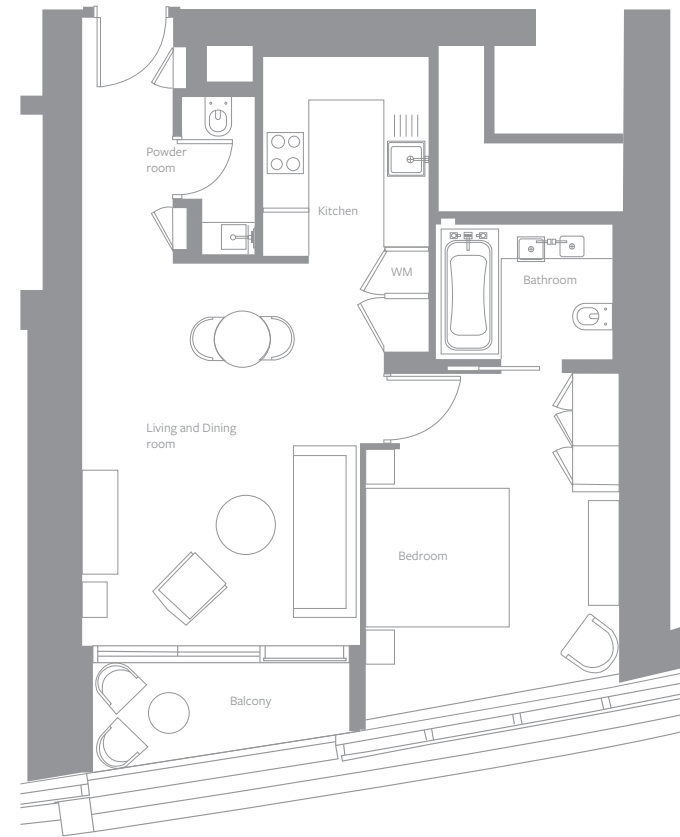


SELLABLE AREA		
	sq.m	sq.ft
Suite Area	57	614
Balcony Area	8	86
Total Area	65	700

Disclaimer: 1. All materials, dimensions and drawings are approximate. 2. Information is subject to change without notice. 3. Actual suite area may vary from the stated area. 4. Drawings not to scale. 5. The developer reserves the right to make revisions/alterations without any liability whatsoever. 6. Residential Apartments are sold as unfurnished apartments, without furniture, furnishings, white goods, etc.



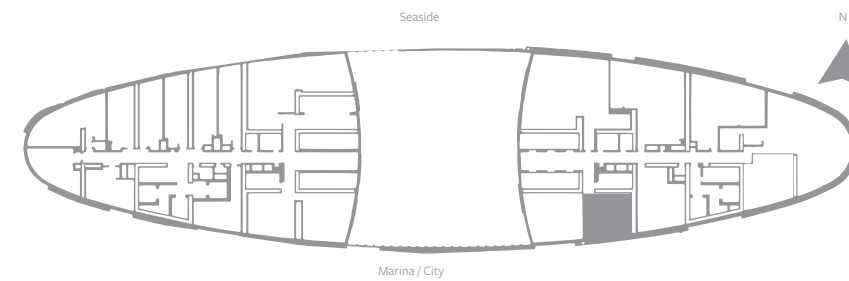
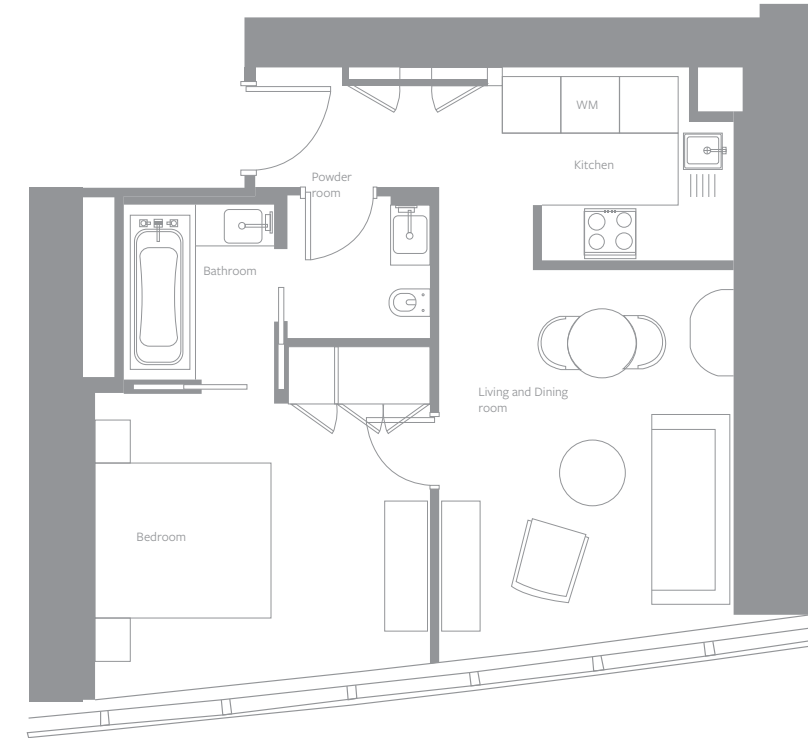
ONE-BEDROOM RESIDENCE - TYPE R1B  
LEVELS: 3 TO 16, 18 TO 41



SELLABLE AREA		
	sq.m	sq.ft
Suite Area	72	775
Balcony Area	8	86
Total Area	80	861

Disclaimer: 1. All materials, dimensions and drawings are approximate. 2. Information is subject to change without notice. 3. Actual suite area may vary from the stated area. 4. Drawings not to scale. 5. The developer reserves the right to make revisions/alterations without any liability whatsoever. 6. Residential Apartments are sold as unfurnished apartments, without furniture, furnishings, white goods, etc.

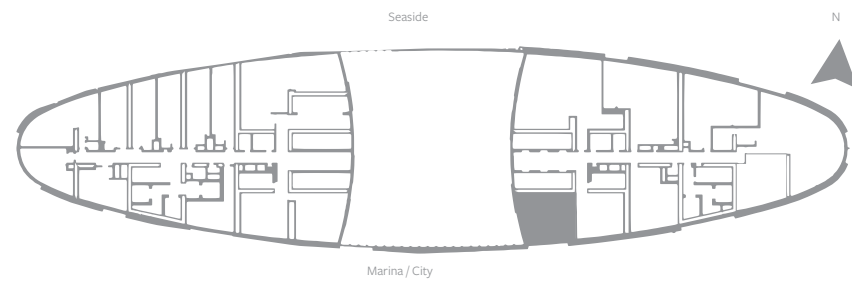
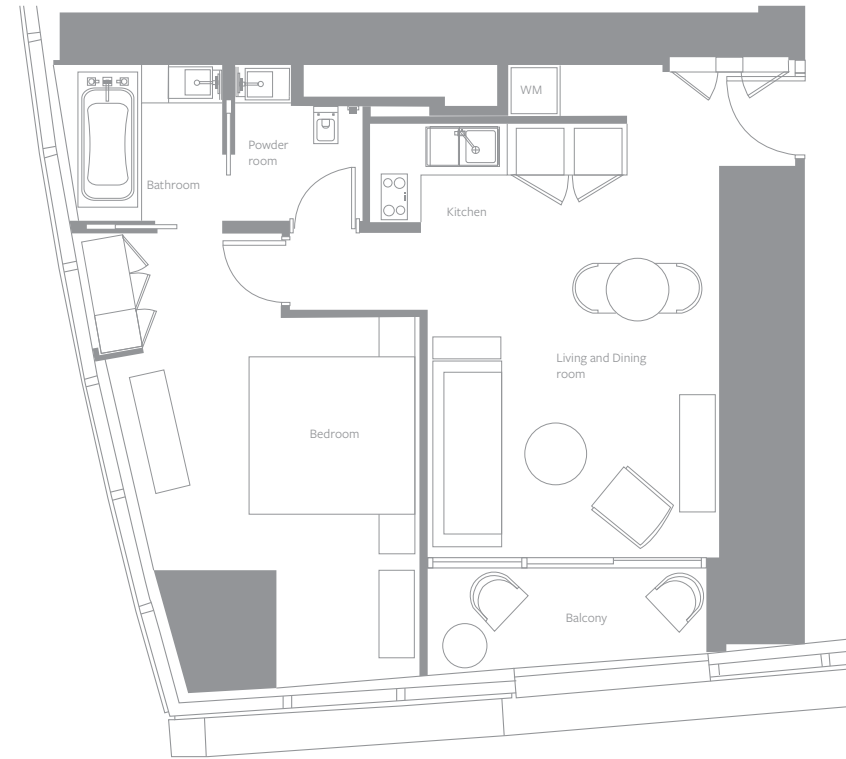
ONE-BEDROOM RESIDENCE - TYPE R1C  
LEVELS: 3 TO 16, 18 TO 41



SELLABLE AREA		
	sq.m	sq.ft
Suite Area	59	635
Total Area	59	635

Disclaimer: 1. All materials, dimensions and drawings are approximate. 2. Information is subject to change without notice. 3. Actual suite area may vary from the stated area. 4. Drawings not to scale. 5. The developer reserves the right to make revisions/alterations without any liability whatsoever. 6. Residential Apartments are sold as unfurnished apartments, without furniture, furnishings, white goods, etc.

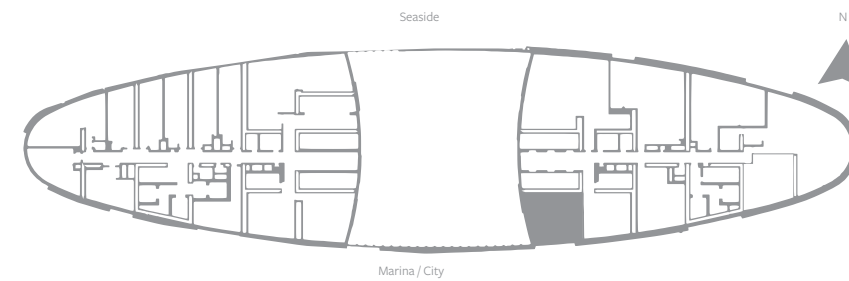
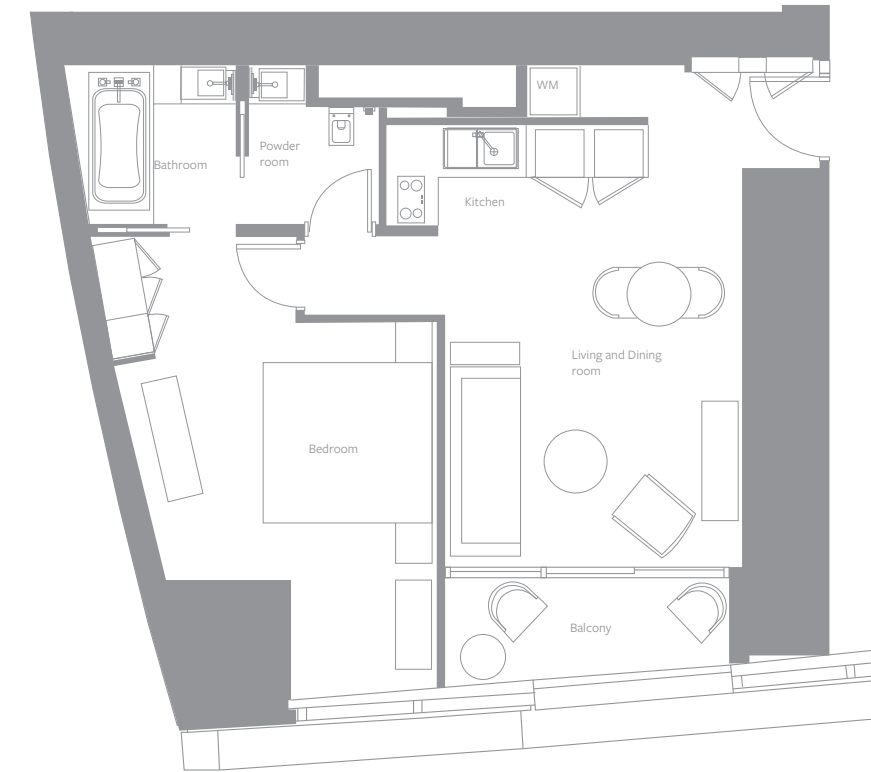
ONE-BEDROOM RESIDENCE - TYPE R1D  
LEVELS: 13 TO 16, 18 TO 41



SELLABLE AREA		
	sq.m	sq.ft
Suite Area	62 - 65	667 - 700
Balcony Area	6	65
Total Area	68 - 71	732 - 765

Disclaimer: 1. All materials, dimensions and drawings are approximate. 2. Information is subject to change without notice. 3. Actual suite area may vary from the stated area. 4. Drawings not to scale. 5. The developer reserves the right to make revisions/alterations without any liability whatsoever. 6. Residential Apartments are sold as unfurnished apartments, without furniture, furnishings, white goods, etc.

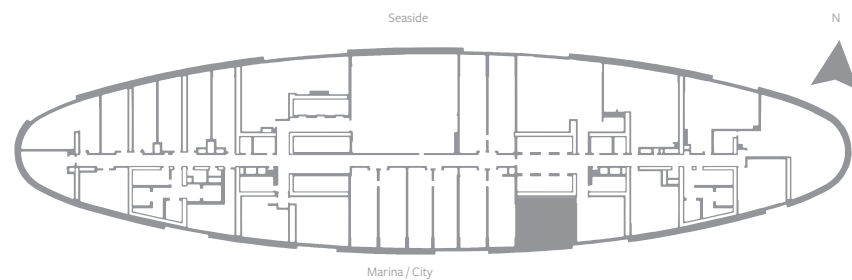
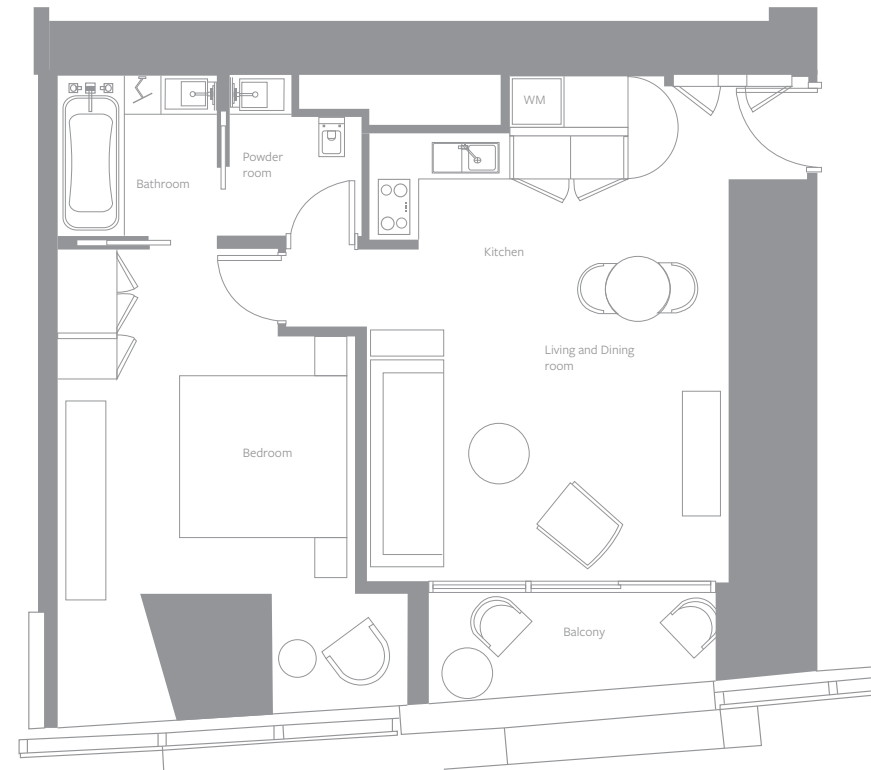
ONE-BEDROOM RESIDENCE - TYPE R1D  
LEVELS: 3 TO 8, 11 TO 12



SELLABLE AREA		
	sq.m	sq.ft
Suite Area	62 - 65	667 - 700
Balcony Area	6	65
Total Area	68 - 71	732 - 765

Disclaimer: 1. All materials, dimensions and drawings are approximate. 2. Information is subject to change without notice. 3. Actual suite area may vary from the stated area. 4. Drawings not to scale. 5. The developer reserves the right to make revisions/alterations without any liability whatsoever. 6. Residential Apartments are sold as unfurnished apartments, without furniture, furnishings, white goods, etc.

ONE-BEDROOM RESIDENCE - TYPE R1E  
LEVELS: 9 TO 10



SELLABLE AREA		
	sq.m	sq.ft
Suite Area	69	743
Balcony Area	6	65
Total Area	75	808

Disclaimer: 1. All materials, dimensions and drawings are approximate. 2. Information is subject to change without notice. 3. Actual suite area may vary from the stated area. 4. Drawings not to scale. 5. The developer reserves the right to make revisions/alterations without any liability whatsoever. 6. Residential Apartments are sold as unfurnished apartments, without furniture, furnishings, white goods, etc.





LIVING ROOM



BEDROOM

## TWO-BEDROOM RESIDENCES

With a remarkable selection of seven unique layouts, families of up to four adults or two adults and two children are spoilt for choice when it comes to finding a two-bedroom residence that offers them their desired combination of advantages and amenities at The Residences Jumeirah Resort, by Address.

While each variant features two spacious bedrooms with attached bathrooms and an extensive living room, dining area and powder room, some include further benefits such as a more spacious layout for the bedrooms and communal areas.

## FEATURES

107sqm to 184sqm / 1,151sqft to 1,981sqft

201 two-bedroom residences

Maximum occupancy: four adults and one child under 12 years or three adults and two children under 12 years

Views of the sea: Type R2A (level 63), R2C, R2D, R2E

Views of the sea (partial): Type R2A (levels 3 to 8, 11 to 12), R2G

Views of marina / city: Types R2F, R2H

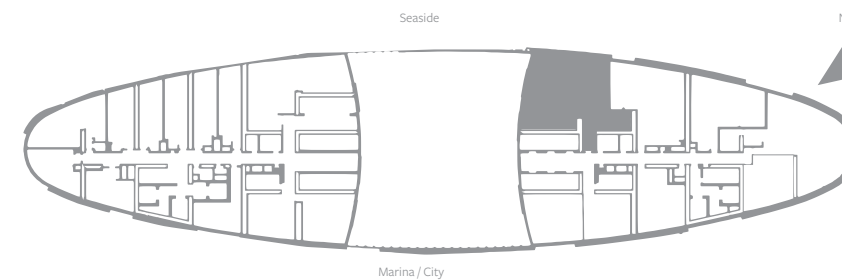
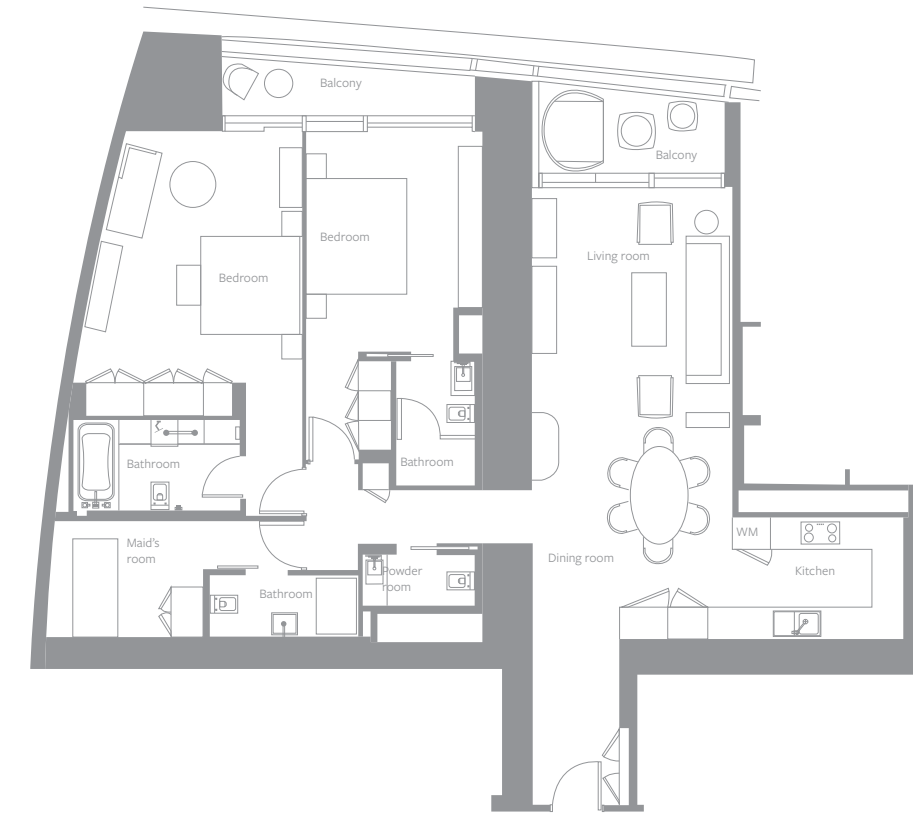
En-suite bathroom in every bedroom

Built-in wardrobes in every bedroom

Kitchen cabinets with worktop complete with hood, kitchen sink, and mixer tap

One car parking space for every residence

## TWO-BEDROOM RESIDENCE - TYPE R2A LEVELS: 3 TO 8, 11 TO 12, 63



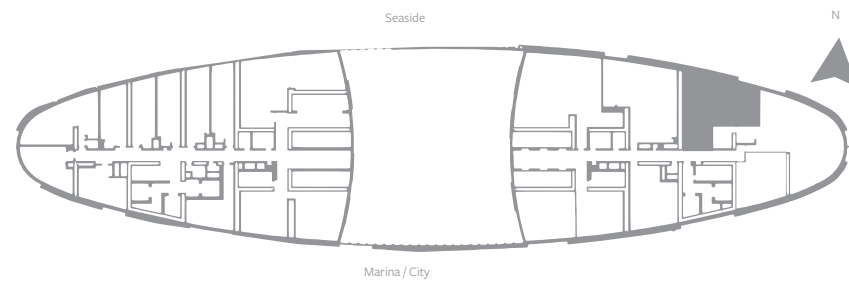
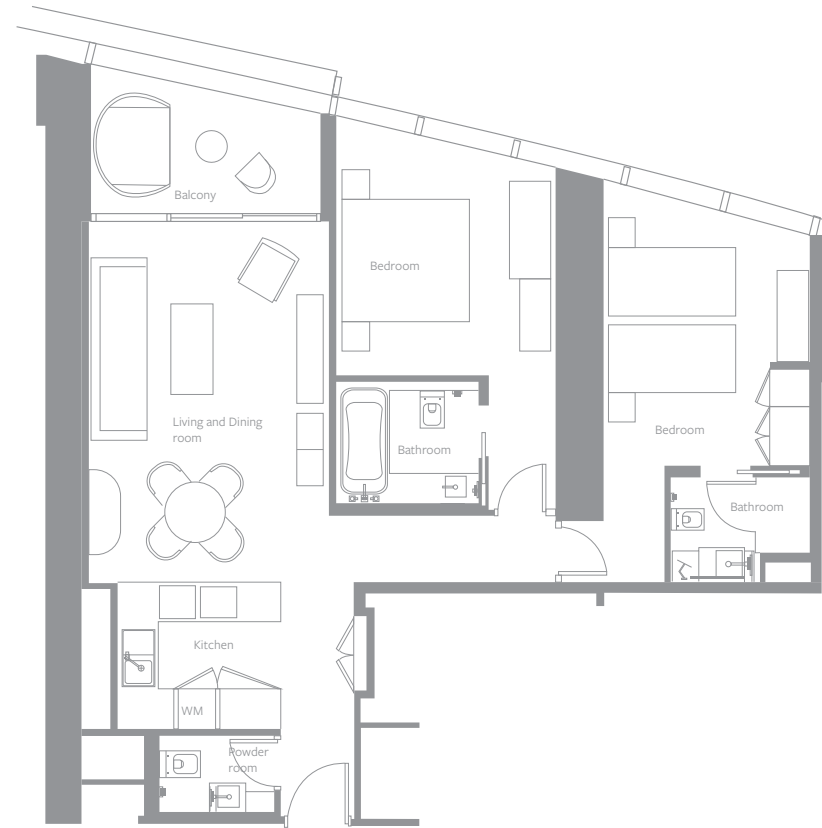
### SELLABLE AREA

	sq.m	sq.ft
Suite Area	160 - 163	1722 - 1755
Balcony Area	19 - 21	205 - 226
Total Area	179 - 184	1927 - 1981

Disclaimer: 1. All materials, dimensions and drawings are approximate. 2. Information is subject to change without notice. 3. Actual suite area may vary from the stated area. 4. Drawings not to scale. 5. The developer reserves the right to make revisions/alterations without any liability whatsoever. 6. Residential Apartments are sold as unfurnished apartments, without furniture, furnishings, white goods, etc.



TWO-BEDROOM RESIDENCE - TYPE R2C  
LEVELS: 3 TO 16, 18 TO 41, 43 TO 72

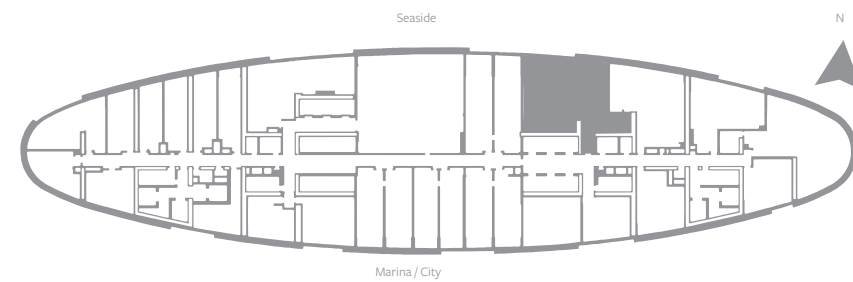
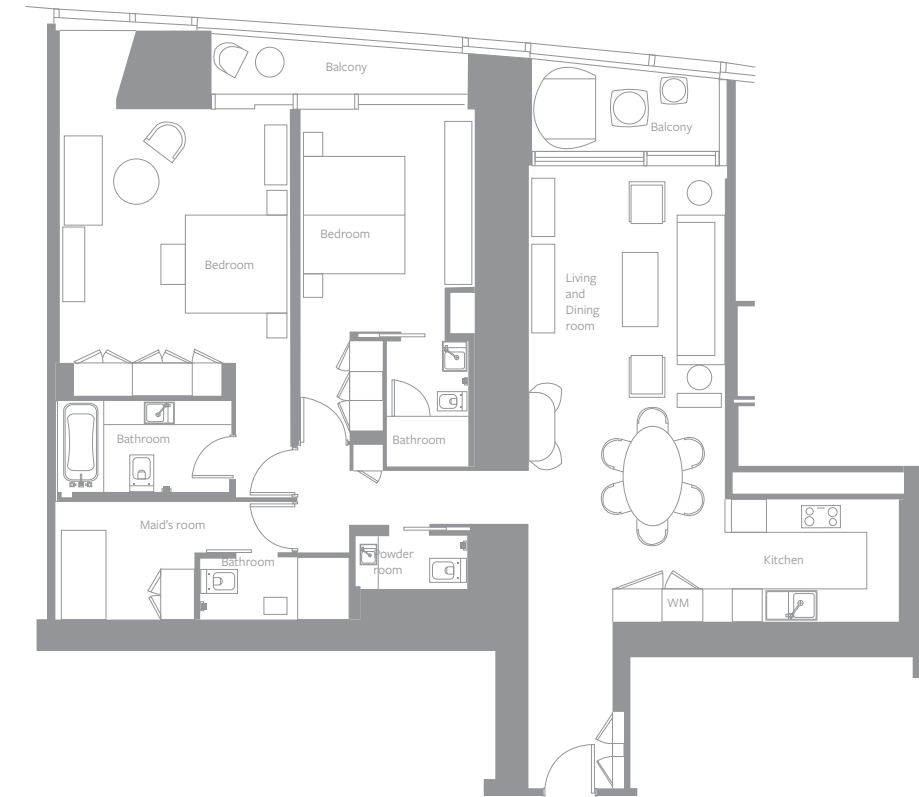


SELLABLE AREA

	sq.m	sq.ft
Suite Area	99 - 100	1066 - 1076
Balcony Area	10	108
Total Area	109 - 110	1174 - 1184

Disclaimer: 1. All materials, dimensions and drawings are approximate. 2. Information is subject to change without notice. 3. Actual suite area may vary from the stated area. 4. Drawings not to scale. 5. The developer reserves the right to make revisions/alterations without any liability whatsoever. 6. Residential Apartments are sold as unfurnished apartments, without furniture, furnishings, white goods, etc.

TWO-BEDROOM RESIDENCE - TYPE R2D  
LEVELS: 9 TO 10

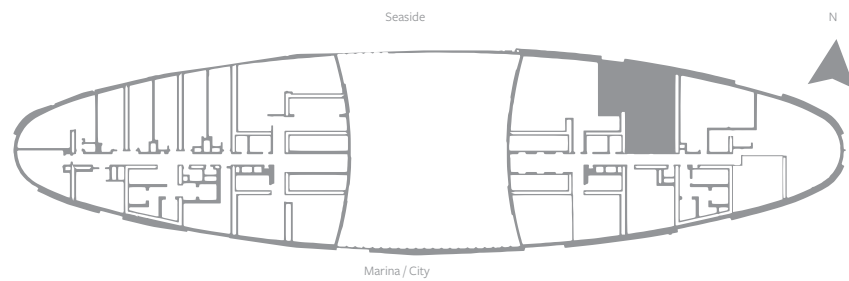
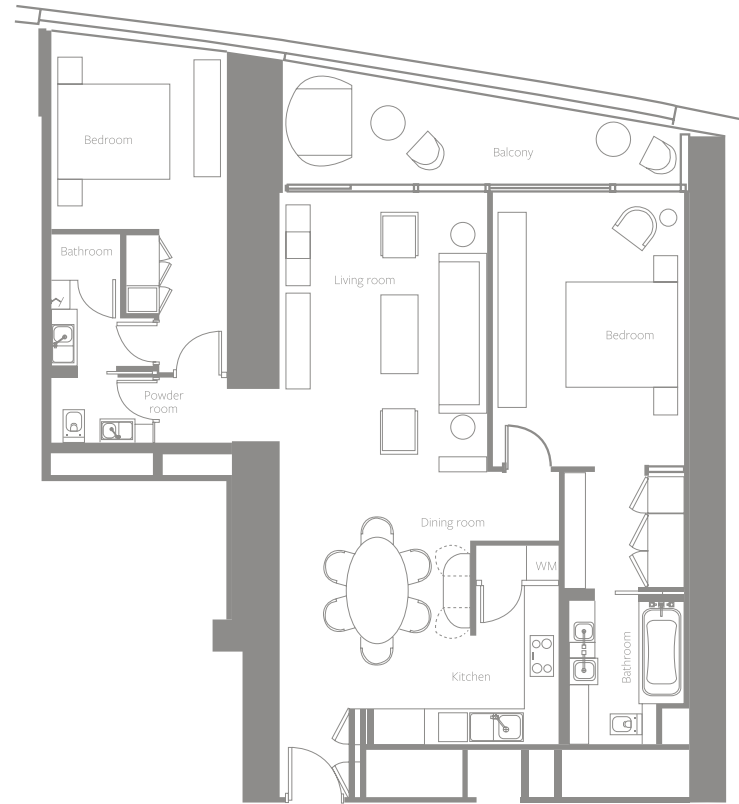


SELLABLE AREA

	sq.m	sq.ft
Suite Area	162	1744
Balcony Area	23	247
Total Area	185	1991

Disclaimer: 1. All materials, dimensions and drawings are approximate. 2. Information is subject to change without notice. 3. Actual suite area may vary from the stated area. 4. Drawings not to scale. 5. The developer reserves the right to make revisions/alterations without any liability whatsoever. 6. Residential Apartments are sold as unfurnished apartments, without furniture, furnishings, white goods, etc.

TWO-BEDROOM RESIDENCE - TYPE R2E  
LEVELS: 3 TO 16, 18 TO 41, 43 TO 67

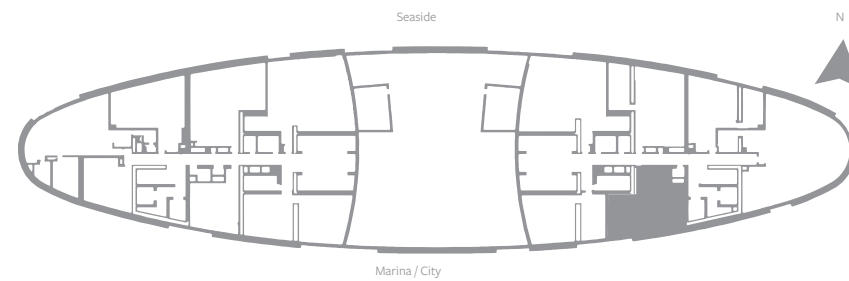
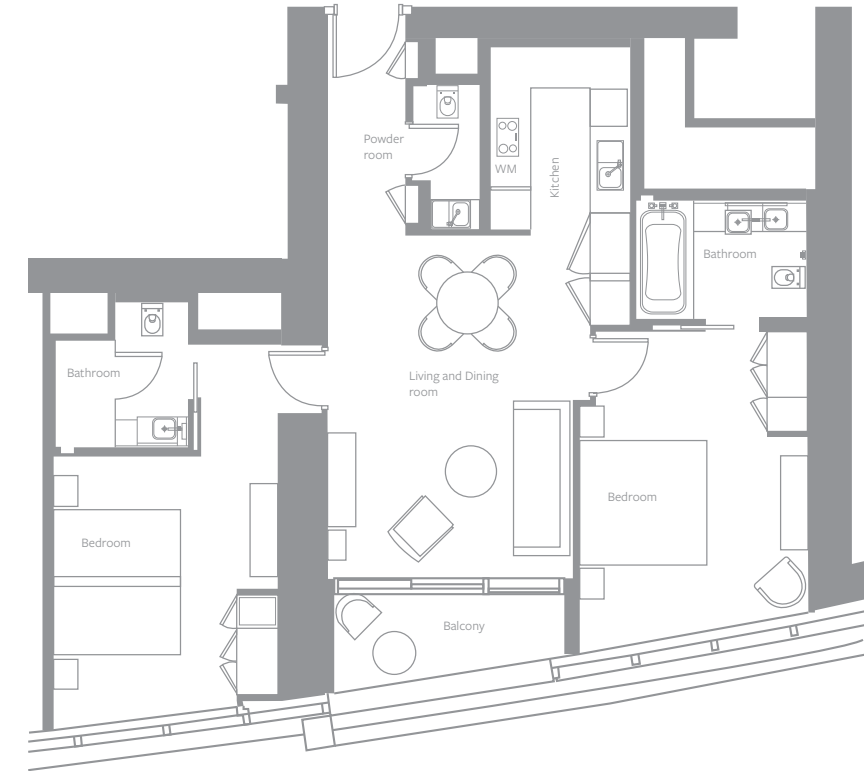


SELLABLE AREA

	sq.m	sq.ft
Suite Area	123 - 124	1324 - 1335
Balcony Area	16	172
Total Area	139 - 140	1496 - 1507

Disclaimer: 1. All materials, dimensions and drawings are approximate. 2. Information is subject to change without notice. 3. Actual suite area may vary from the stated area. 4. Drawings not to scale. 5. The developer reserves the right to make revisions/alterations without any liability whatsoever. 6. Residential Apartments are sold as unfurnished apartments, without furniture, furnishings, white goods, etc.

TWO-BEDROOM RESIDENCE - TYPE R2F  
LEVELS: 43 TO 72

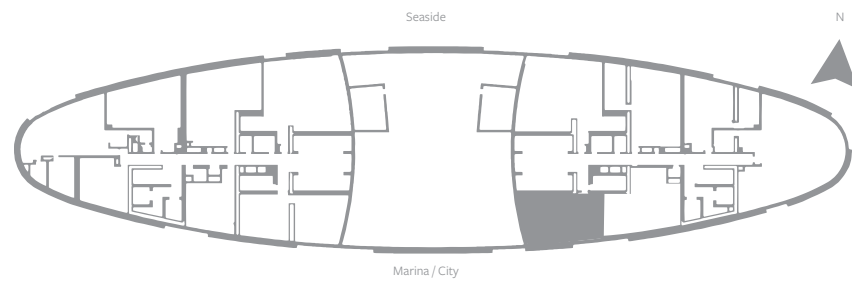
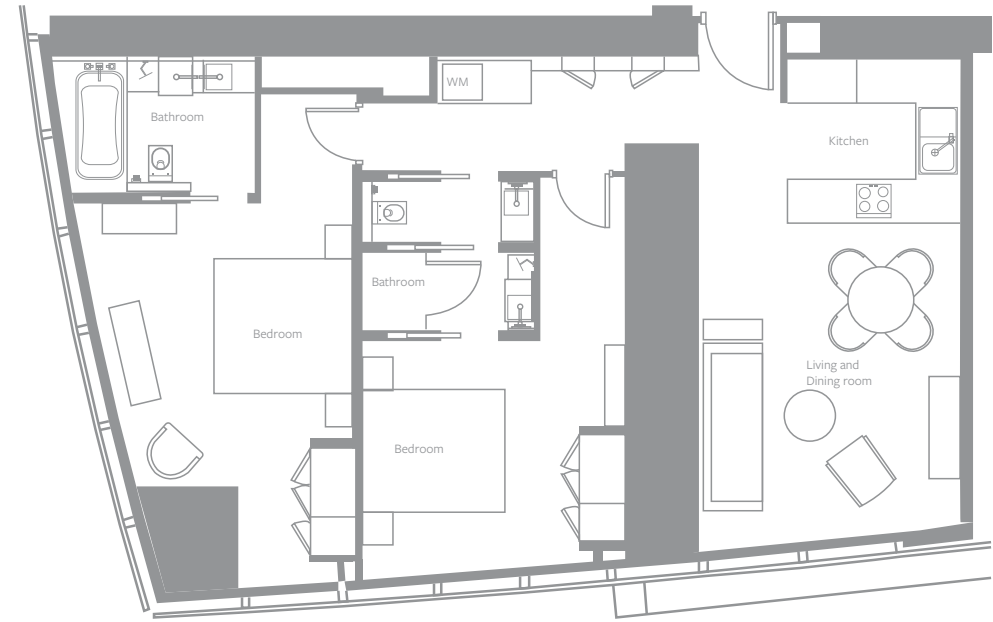


SELLABLE AREA

	sq.m	sq.ft
Suite Area	100 - 101	1076 - 1087
Balcony Area	7	75
Total Area	107 - 108	1151 - 1162

Disclaimer: 1. All materials, dimensions and drawings are approximate. 2. Information is subject to change without notice. 3. Actual suite area may vary from the stated area. 4. Drawings not to scale. 5. The developer reserves the right to make revisions/alterations without any liability whatsoever. 6. Residential Apartments are sold as unfurnished apartments, without furniture, furnishings, white goods, etc.

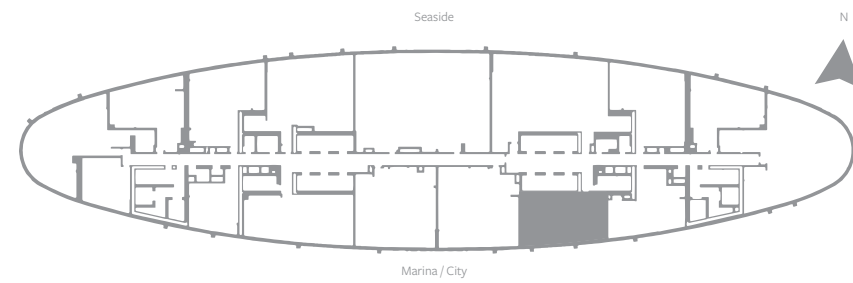
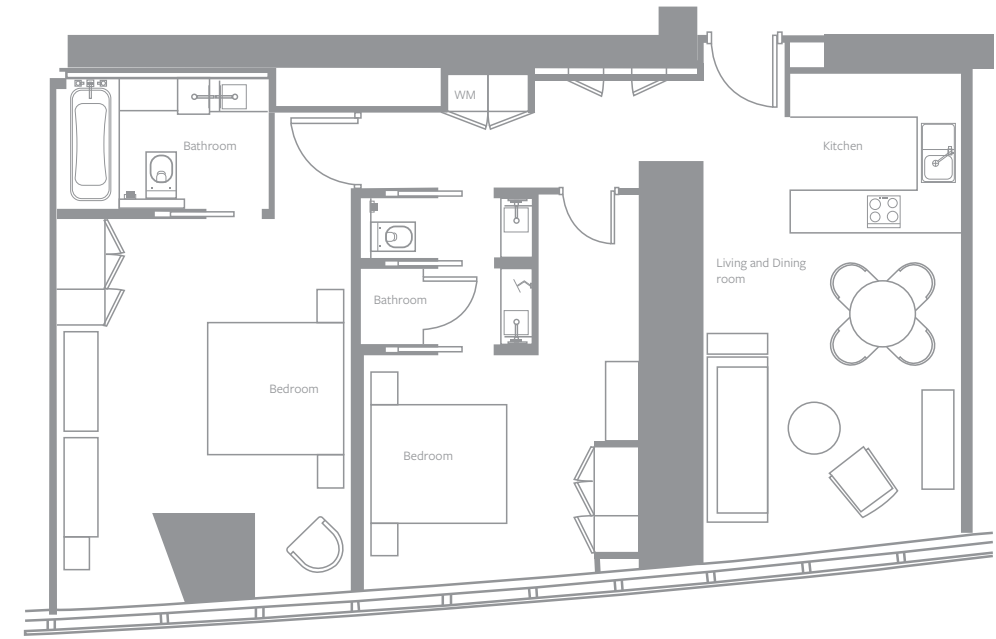
TWO-BEDROOM RESIDENCE - TYPE R2G  
LEVELS: 43 TO 62



SELLABLE AREA		
	sq.m	sq.ft
Suite Area	107 - 108	1152 - 1163
Total Area	107 - 108	1152 - 1163

Disclaimer: 1. All materials, dimensions and drawings are approximate. 2. Information is subject to change without notice. 3. Actual suite area may vary from the stated area. 4. Drawings not to scale. 5. The developer reserves the right to make revisions/alterations without any liability whatsoever. 6. Residential Apartments are sold as unfurnished apartments, without furniture, furnishings, white goods, etc.

TWO-BEDROOM RESIDENCE - TYPE R2H  
LEVELS: 64 TO 72



SELLABLE AREA		
	sq.m	sq.ft
Suite Area	113	1216
Total Area	113	1216

Disclaimer: 1. All materials, dimensions and drawings are approximate. 2. Information is subject to change without notice. 3. Actual suite area may vary from the stated area. 4. Drawings not to scale. 5. The developer reserves the right to make revisions/alterations without any liability whatsoever. 6. Residential Apartments are sold as unfurnished apartments, without furniture, furnishings, white goods, etc.



BEDROOM



LIVING ROOM

## THREE-BEDROOM RESIDENCES

Each of the three splendid designs of the three-bedroom residences offers distinct advantages that assure a superior standard of living for families of up to eight individuals. The smaller variants are distinguished by their ingenious design, which optimises space and privacy in every room while uplifting the joy and intimacy of shared living.

The largest of the three options (Type R3C) capitalises on its generous area with the inclusion of three balconies, a private study and a large living room.

## FEATURES

176sqm to 256sqm / 1,894sqft to 2,755sqft

90 three-bedroom residences

Maximum occupancy: six adults and one child under 12 years or five adults and two children under 12 years

Views of the sea and city: Type R3A

Views of the sea: Type R3B, R3C

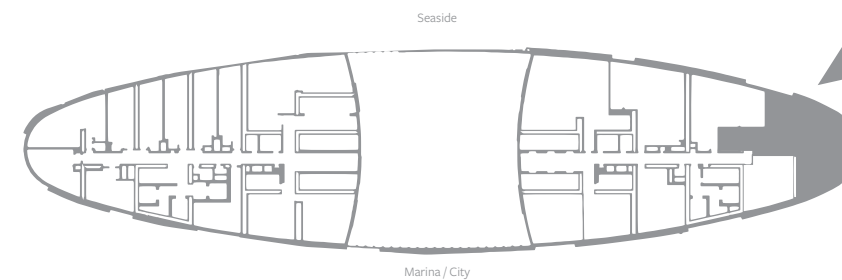
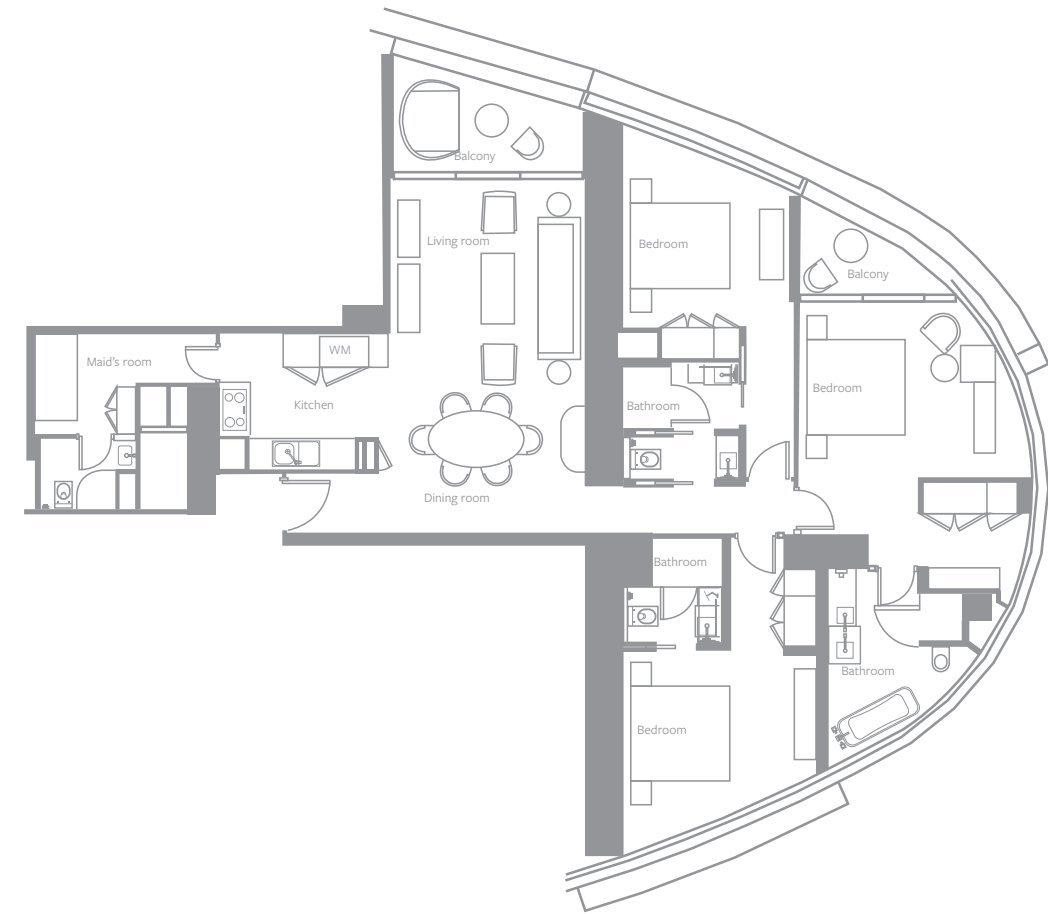
En-suite bathroom in every bedroom

Built-in wardrobes in every bedroom

Kitchen cabinets with worktop complete with hood, kitchen sink, and mixer tap

Two car parking spaces for every residence

## THREE-BEDROOM RESIDENCE - TYPE R3A LEVELS: 3 TO 16, 18 TO 41

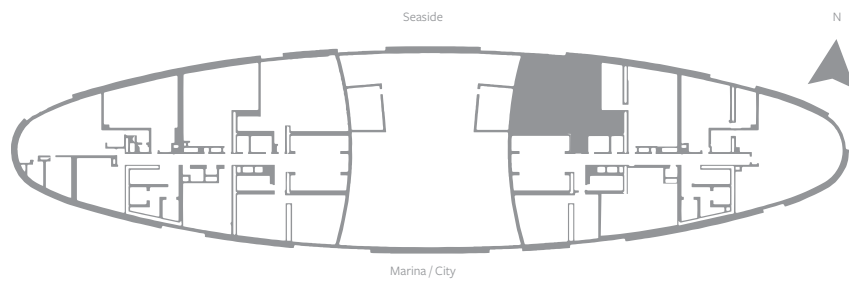
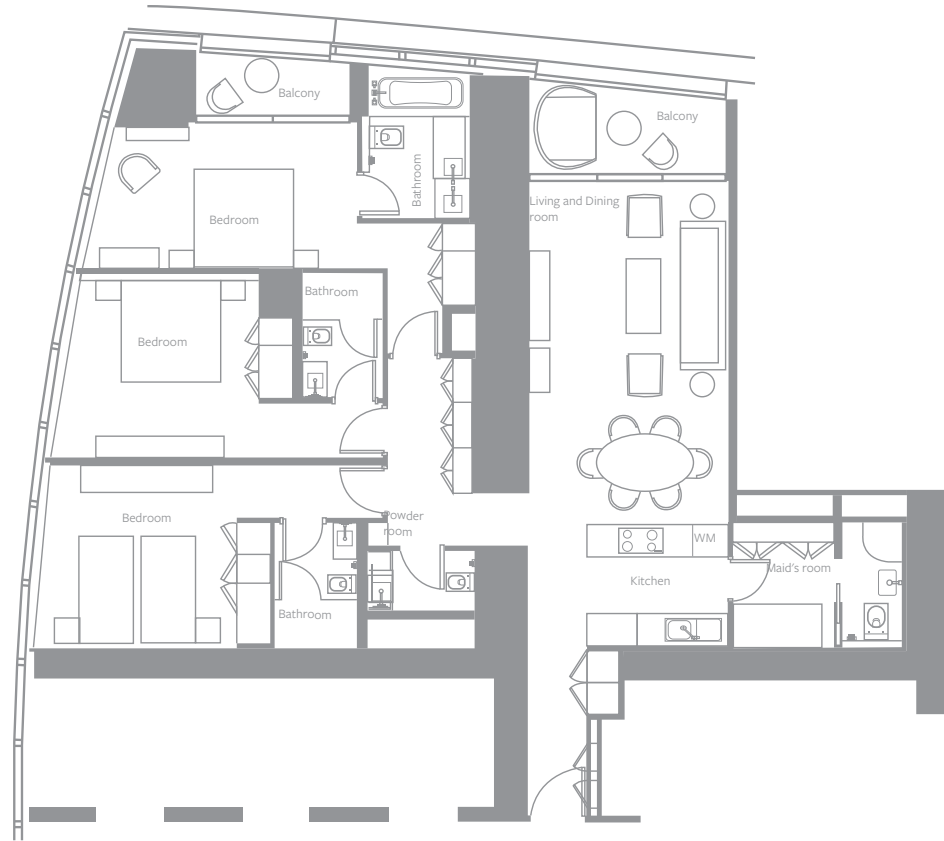


SELLABLE AREA		
	sq.m	sq.ft
Suite Area	162	1744
Balcony Area	14	151
Total Area	176	1895

Disclaimer: 1. All materials, dimensions and drawings are approximate. 2. Information is subject to change without notice. 3. Actual suite area may vary from the stated area. 4. Drawings not to scale. 5. The developer reserves the right to make revisions/alterations without any liability whatsoever. 6. Residential Apartments are sold as unfurnished apartments, without furniture, furnishings, white goods, etc.



THREE-BEDROOM RESIDENCE - TYPE R3B  
 LEVELS: 13 TO 16, 18 TO 41, 43 TO 62

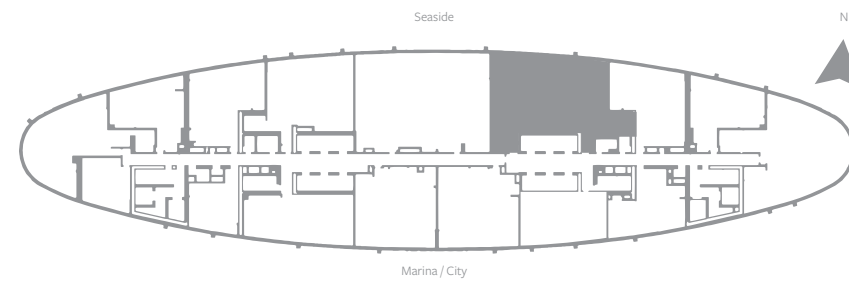
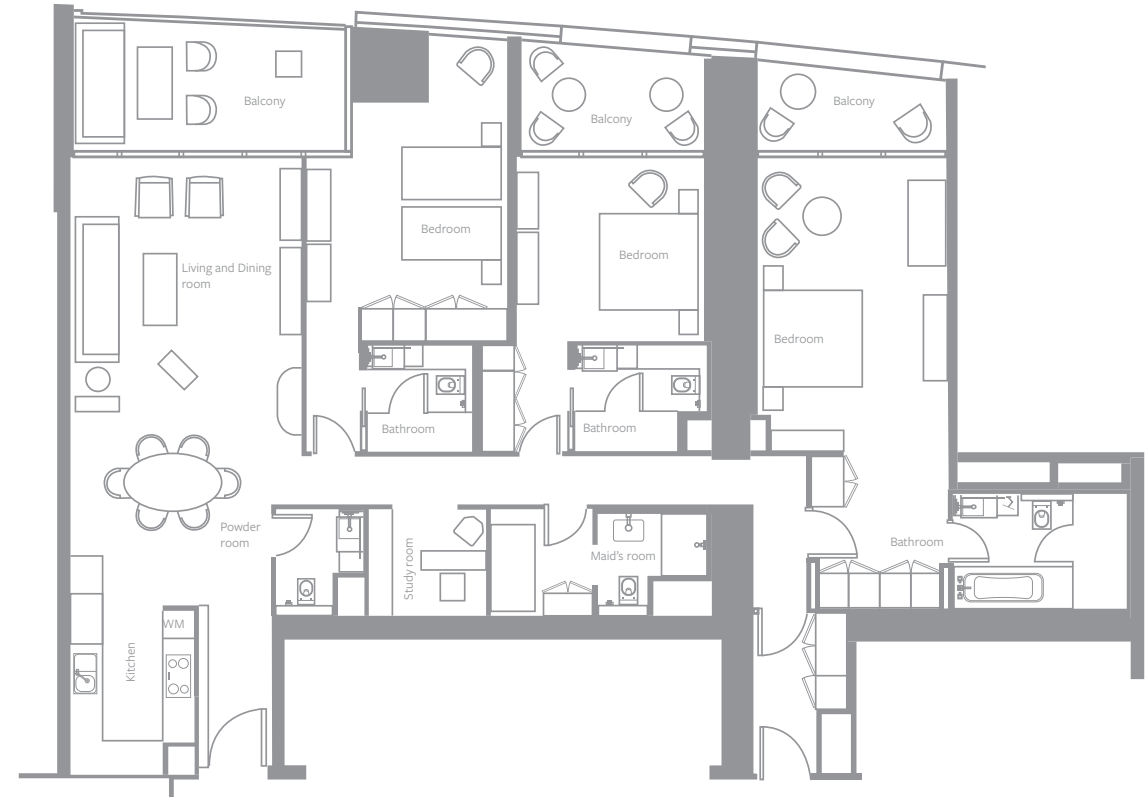


SELLABLE AREA

	sq.m	sq.ft
Suite Area	166 - 167	1787 - 1798
Balcony Area	16 - 17	172 - 183
Total Area	182 - 184	1959 - 1981

Disclaimer: 1. All materials, dimensions and drawings are approximate. 2. Information is subject to change without notice. 3. Actual suite area may vary from the stated area. 4. Drawings not to scale. 5. The developer reserves the right to make revisions/alterations without any liability whatsoever. 6. Residential Apartments are sold as unfurnished apartments, without furniture, furnishings, white goods, etc.

THREE-BEDROOM RESIDENCE - TYPE R3C  
 LEVELS: 64 TO 67



SELLABLE AREA

	sq.m	sq.ft
Suite Area	218	2347
Balcony Area	37	398
Total Area	255	2745

Disclaimer: 1. All materials, dimensions and drawings are approximate. 2. Information is subject to change without notice. 3. Actual suite area may vary from the stated area. 4. Drawings not to scale. 5. The developer reserves the right to make revisions/alterations without any liability whatsoever. 6. Residential Apartments are sold as unfurnished apartments, without furniture, furnishings, white goods, etc.



BEDROOM



BATHROOM

## FOUR-BEDROOM RESIDENCES

Attractively situated at the rim of the tower, the four-bedroom residence makes the most of the brilliant skyscraper's oval shape structure with its delightfully intuitive design and almost 360-degree perspectives of the beach and Dubai cityscape. The capacious abode features a separate living room and dining area, which conveniently connects to a modern open kitchen and the maid's room.

The communal areas are centrally located near the main entrance, and are easily accessible from every bedroom. Floor-to-ceiling windows encapsulate the residence and ensure an abundance of natural light in every space, while two immaculate balconies offer the opportunity to step out and enjoy the soothing coastal breeze in an elegant alfresco environment.

## FEATURES

241sqm / 2,594sqft

30 four-bedroom residences

Maximum occupancy: eight adults and one child under 12 years or seven adults and two children under 12 years

Views of the sea and city: Type R4A (levels 43 to 72)

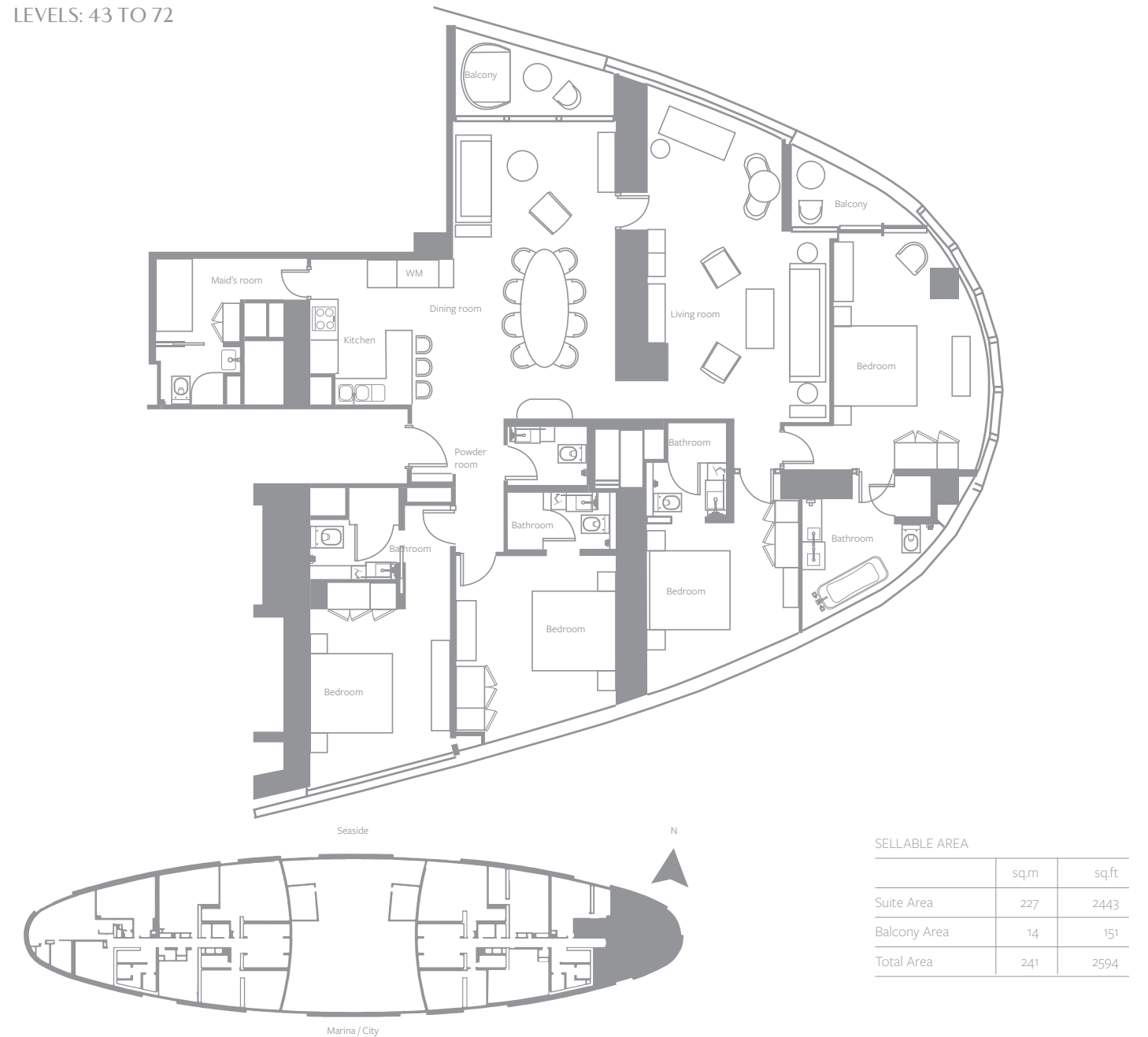
En-suite bathroom in every bedroom

Built-in wardrobes in every bedroom

Kitchen cabinets with worktop complete with hood, kitchen sink, and mixer tap

Two car parking spaces for every residence

## FOUR-BEDROOM RESIDENCE - TYPE R4A LEVELS: 43 TO 72



Disclaimer: 1. All materials, dimensions and drawings are approximate. 2. Information is subject to change without notice. 3. Actual suite area may vary from the stated area. 4. Drawings not to scale. 5. The developer reserves the right to make revisions/alterations without any liability whatsoever. 6. Residential Apartments are sold as unfurnished apartments, without furniture, furnishings, white goods, etc.



LIVING ROOM



BEDROOM

## FIVE-BEDROOM RESIDENCES

Outstanding in terms of both size and aesthetics, the five-bedroom residences occupy pride of place from levels 68 to 72 of The Residences Jumeirah Resort by Address. The one-of-a-kind allure of this magnificent home is amply reflected by its many unique facets which include, but are not limited to, the presence of four vast balconies, the striking spaciousness of its living and dining room and an extended kitchen that features a closed area as well as an open area with attached seating.

### FEATURES

399sqm / 4295sqft

Five five-bedroom residences

Maximum occupancy: ten adults and one child under 12 years or nine adults and two children under 12 years

Views of the sea: Type R5A (levels 68 to 72)

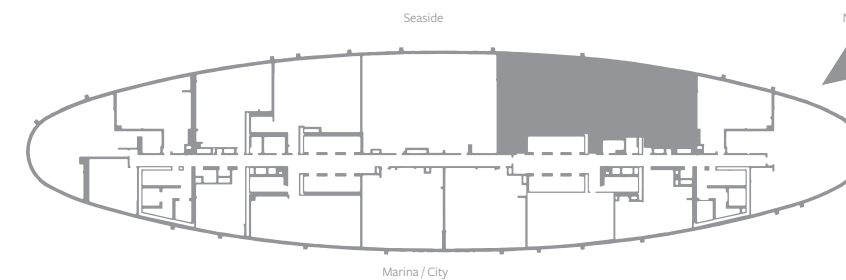
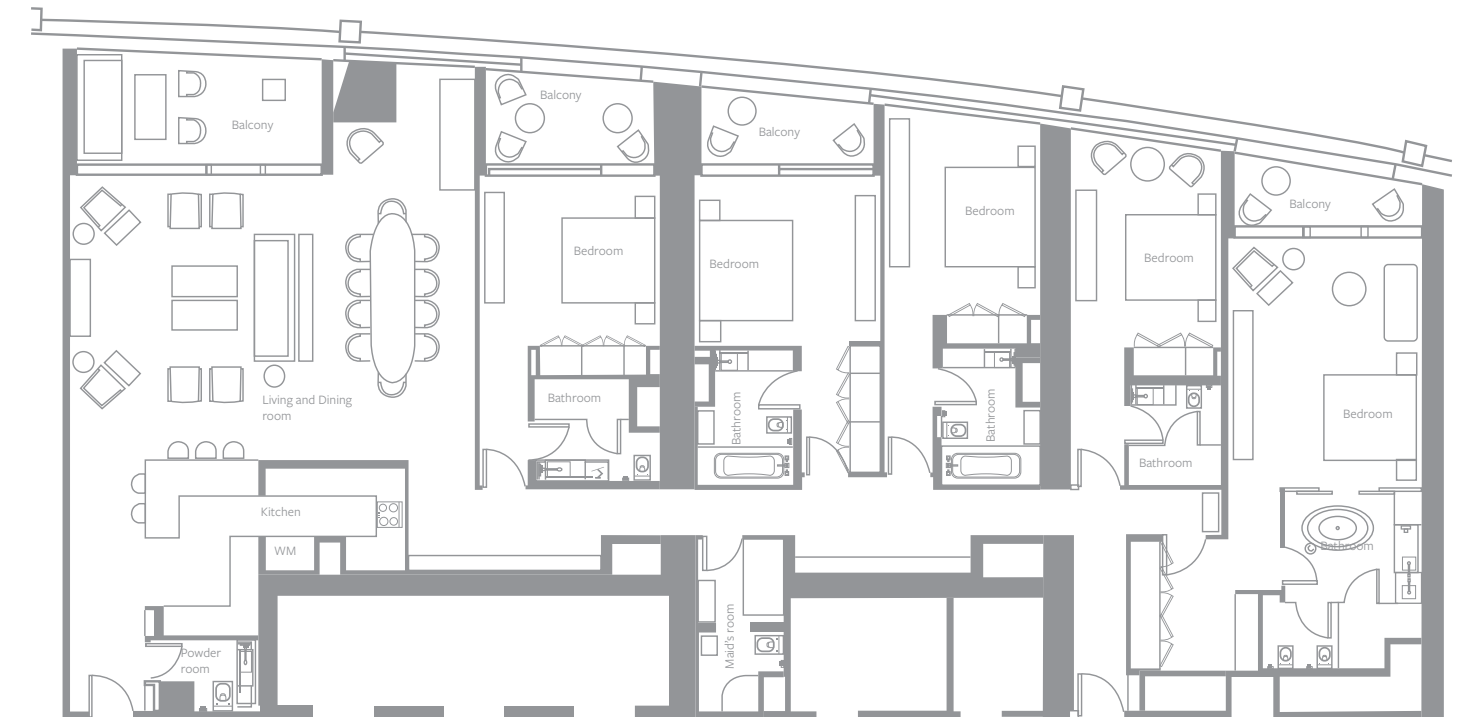
En-suite bathroom in every bedroom

Built-in wardrobes in every bedroom

Kitchen cabinets with worktop complete with hood, kitchen sink, and mixer tap

Two car parking spaces for every residence

## FIVE-BEDROOM RESIDENCE - TYPE R5A LEVELS: 68 TO 72



SELLABLE AREA		
	sq.m	sq.ft
Suite Area	354	3811
Balcony Area	45	484
Total Area	399	4295

Disclaimer: 1. All materials, dimensions and drawings are approximate. 2. Information is subject to change without notice. 3. Actual suite area may vary from the stated area. 4. Drawings not to scale. 5. The developer reserves the right to make revisions/alterations without any liability whatsoever. 6. Residential Apartments are sold as unfurnished apartments, without furniture, furnishings, white goods, etc.






BUY | SELL | RENT | PROPERTY MANAGEMENT SERVICES

GET IN TOUCH WITH US

 +971 56 818 8610

 [info@homes4life.ae](mailto:info@homes4life.ae)

 **Head Office:**  
Office 25 | Oasis Center | Sheikh Zayed Road | Dubai | +971 4 338 7300

**Branch Office:**  
Retail 1 | Safi Apartments | Town Square Dubai | Dubai | +971 4 398 1528