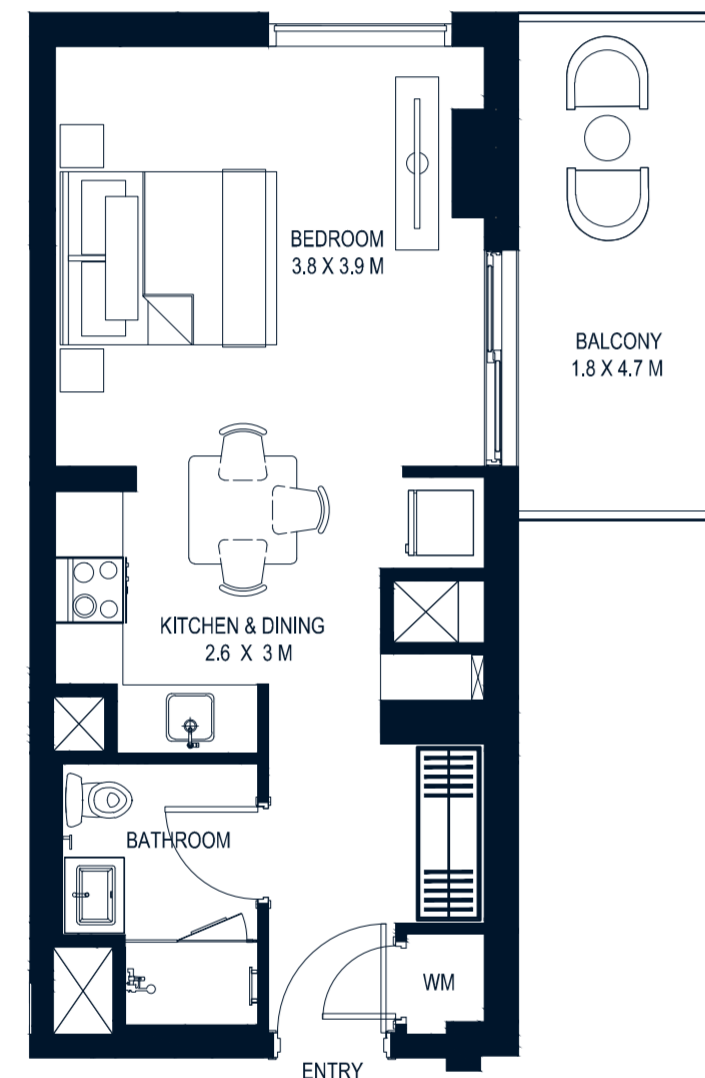


FLOOR PLANS



AVERAGE AREA: 43m²*

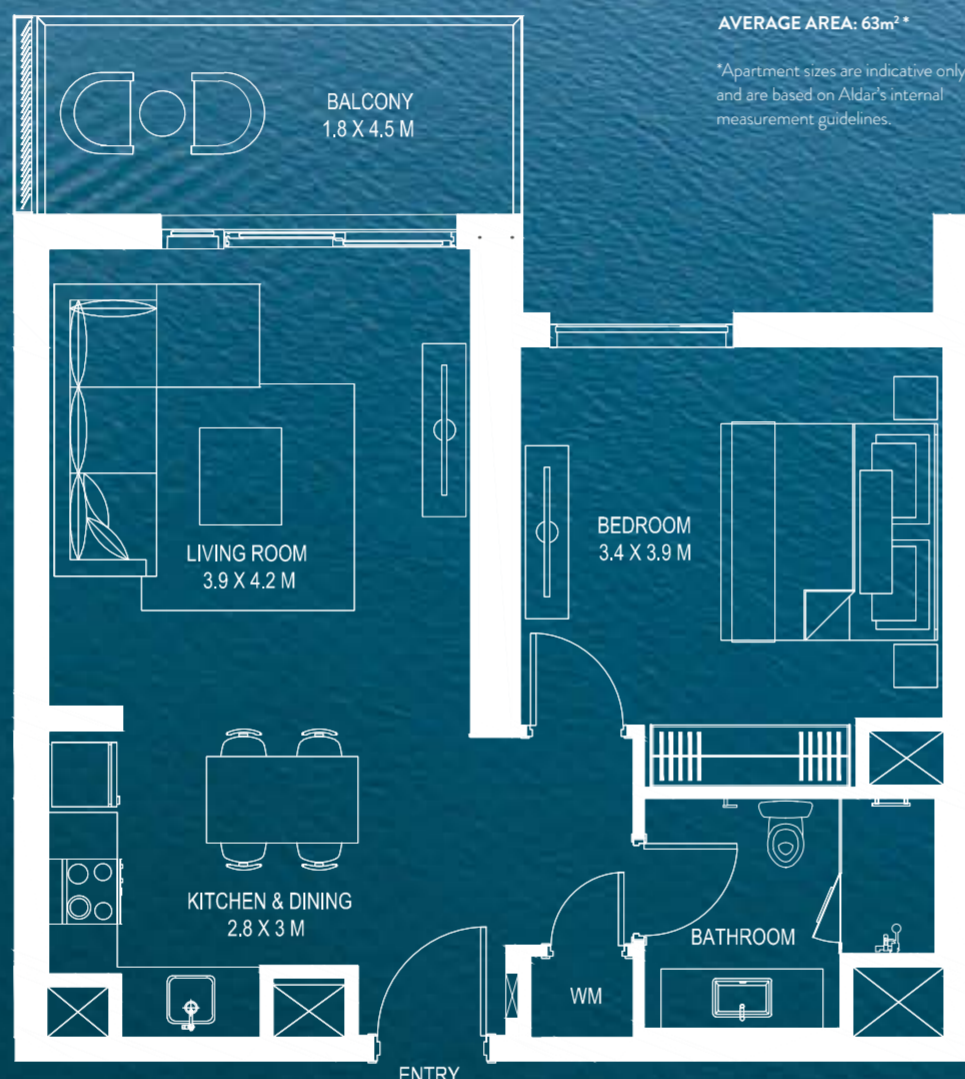
*Apartment sizes are indicative only and are based on Aldar's internal measurement guidelines.



S
STUDIO

AVERAGE AREA: 63m²*

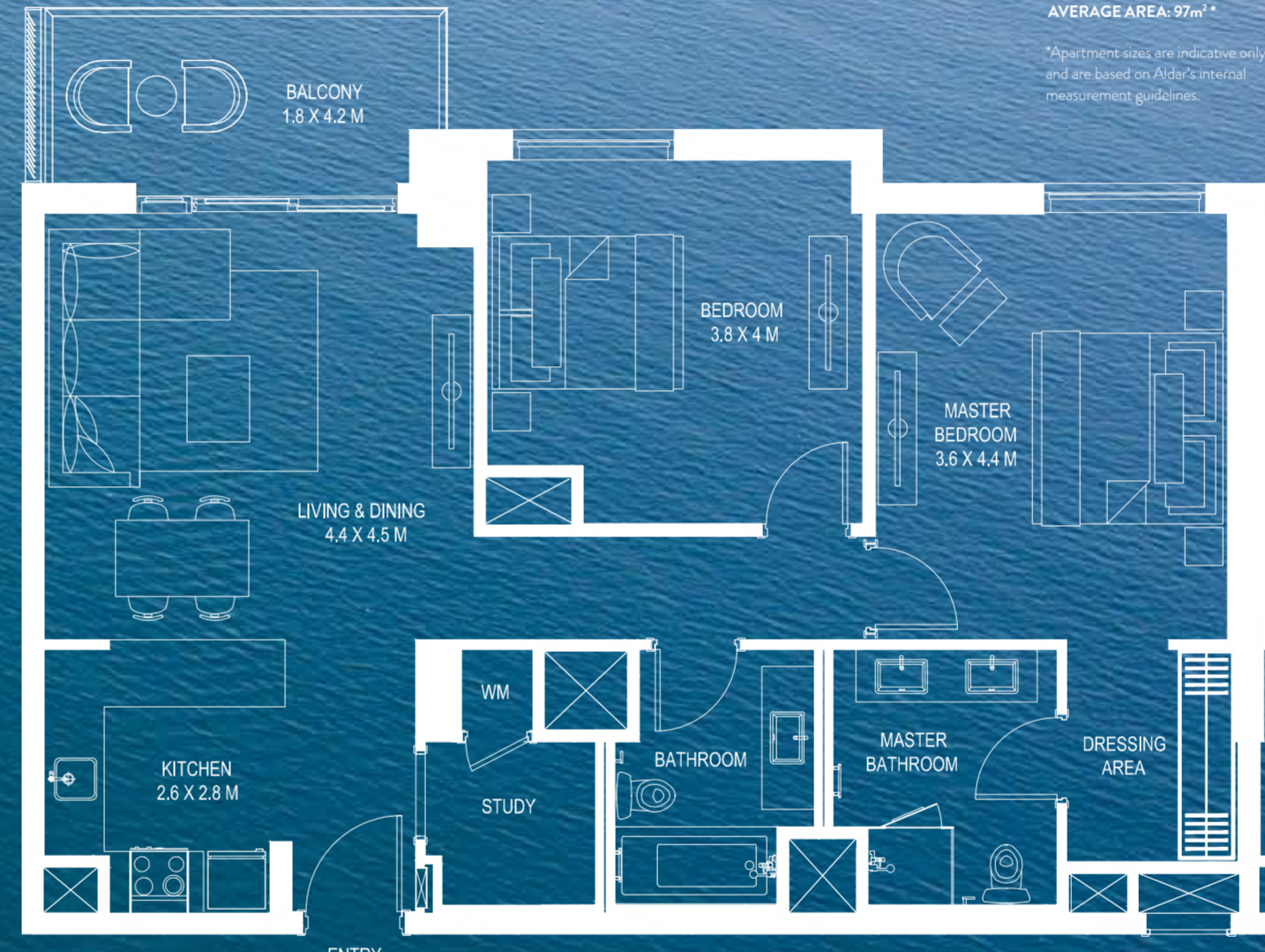
*Apartment sizes are indicative only and are based on Aldar's internal measurement guidelines.



1
BEDROOM

AVERAGE AREA: 97m²*

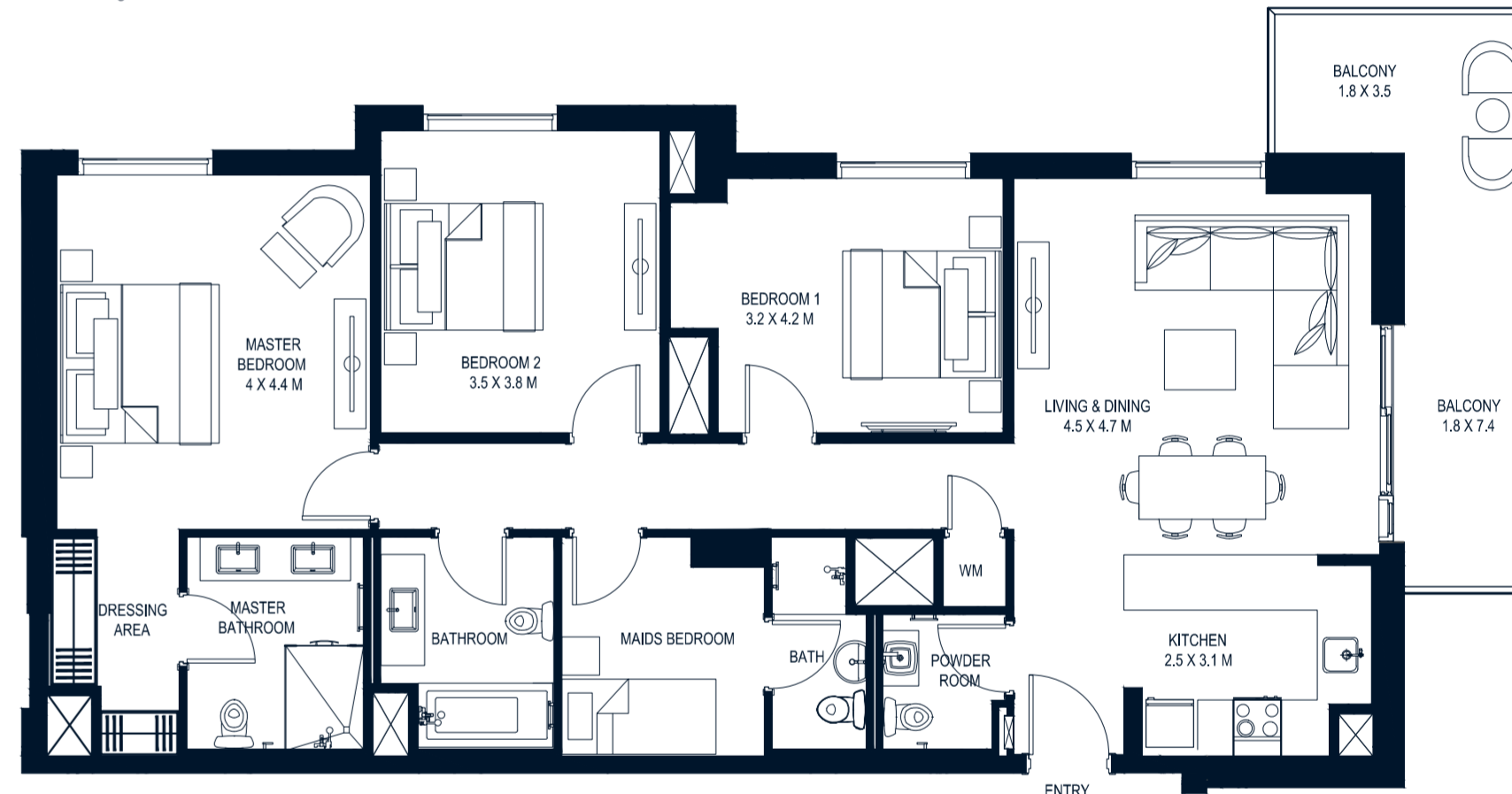
*Apartment sizes are indicative only and are based on Aldar's internal measurement guidelines.



2
BEDROOM

AVERAGE AREA: 140m²*

*Apartment sizes are indicative only and are based on Aldar's internal measurement guidelines.



3
BEDROOM

Disclaimer: Note that this floor plan was produced prior to the completion of construction and is indicative only and not to scale. Changes may be made during the development and areas, fittings, finishes and specifications are subject to change without notice in accordance with the provision of the Contract of Sale. The furniture depicted is not included with any sale and should not be taken to indicate the final positions of power points, TV connections and the like. Prospective purchasers must rely on their own enquiries from time to time. Bulkheads necessary for services and structure are not depicted.



 **056 650 6590**

 **marketing@homes4life.ae**

Office 25 | Oasis Center | Sheikh Zayed Road | Dubai | UAE | P.O. Box 34542

BUY | SELL | RENT | PROPERTY MANAGEMENT SERVICES