

FLOOR PLANS

All 1/JBR penthouse units have the following standard features:

- Phenomenal sea views from all residences
- View of Dubai Eye and Palm Jumeirah from the living / dining room and master bedroom
- Semi-private lift, 10 ft. high ceiling in the living / dining room
- En-suite bathrooms for all bedrooms
- 5-piece master bath
- Spacious balcony overlooking the sea





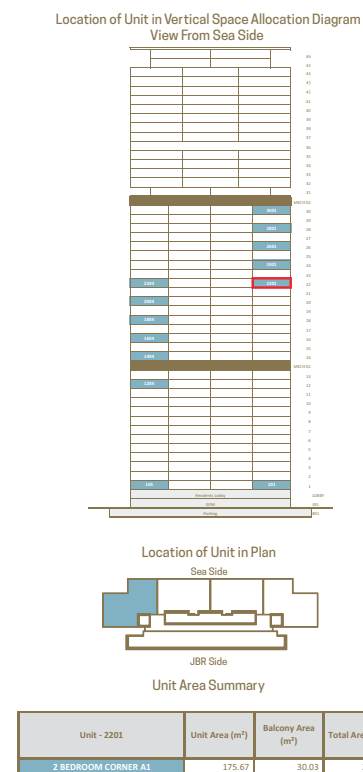
Note: Balconies vary based on the floor level and unit number.
For final selection refer to individual sales plans.



Note: Balconies vary based on the floor level and unit number.
For final selection refer to individual sales plans.

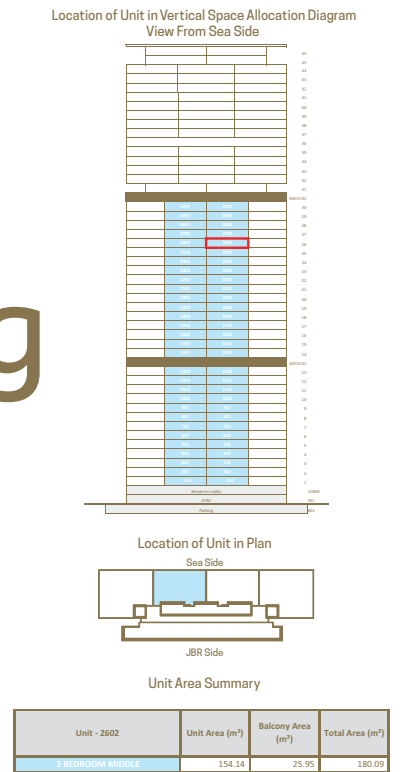
2-Bedroom Corner + Maid's Room

Located on Levels 1-30
Area: 176 sq. mt. (1,891 sq. ft.)
Balcony Area: 28 sq. mt. (302 sq. ft.)
Includes maid's room, storage room and possibility of adding a pool or jacuzzi



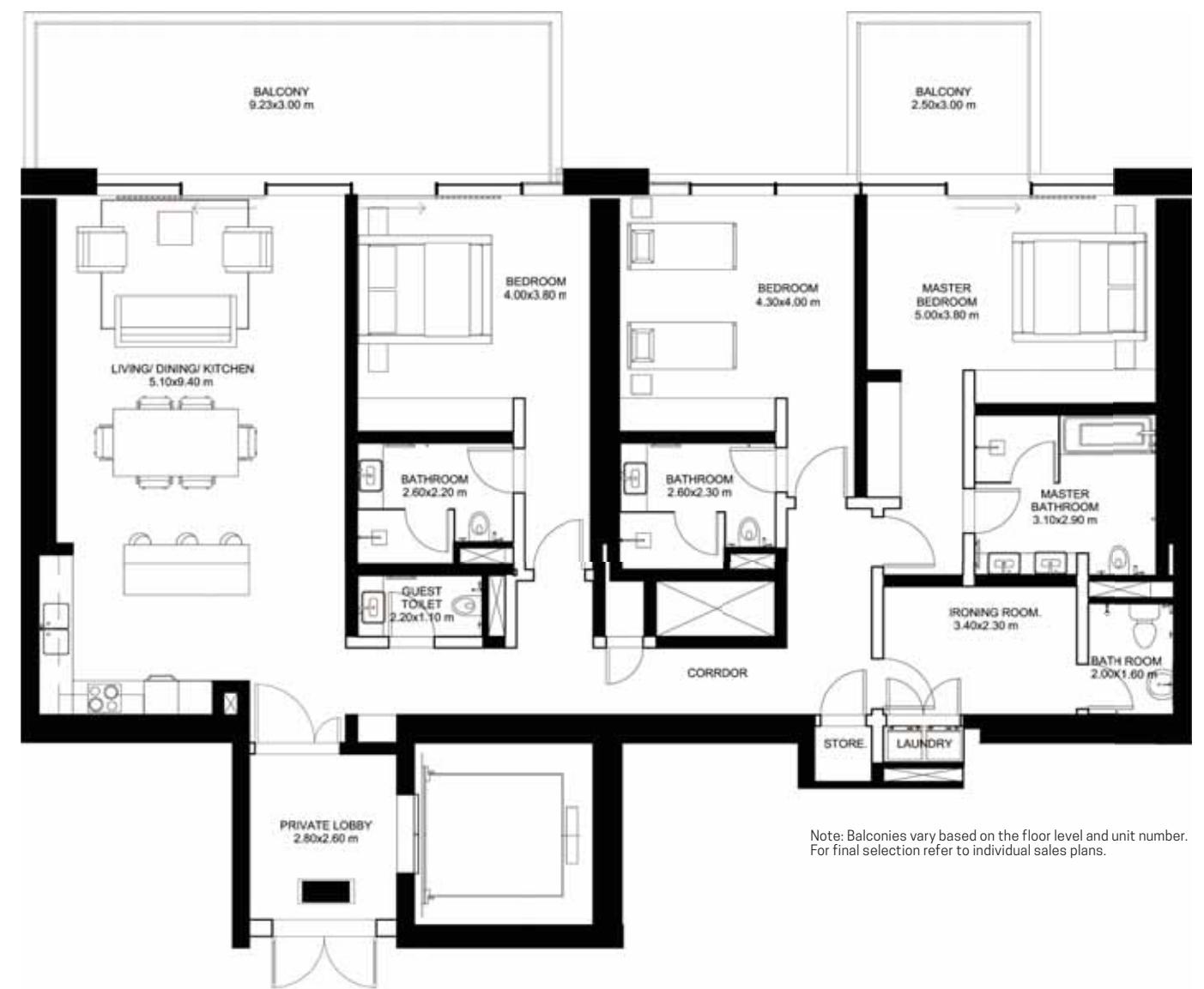
2-Bedroom Middle + Laundry / Ironing

Located on Levels 1-30
Area: 153 sq. mt. (1,647 sq. ft.)
Balcony Area: 26 sq. mt. (279 sq. ft.)
Includes ironing room, storage room





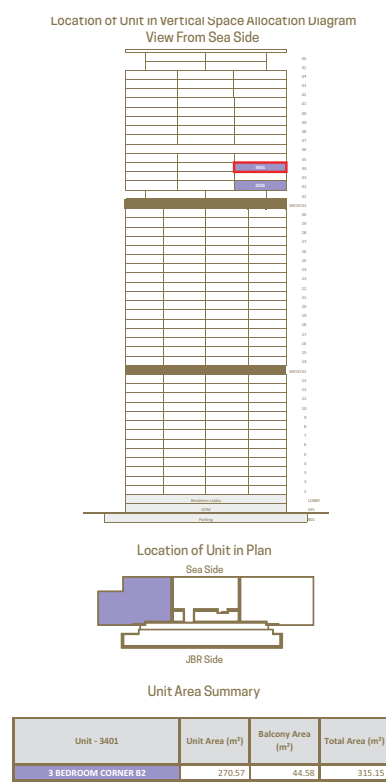
Note: Balconies vary based on the floor level and unit number.
For final selection refer to individual sales plans.



Note: Balconies vary based on the floor level and unit number.
For final selection refer to individual sales plans.

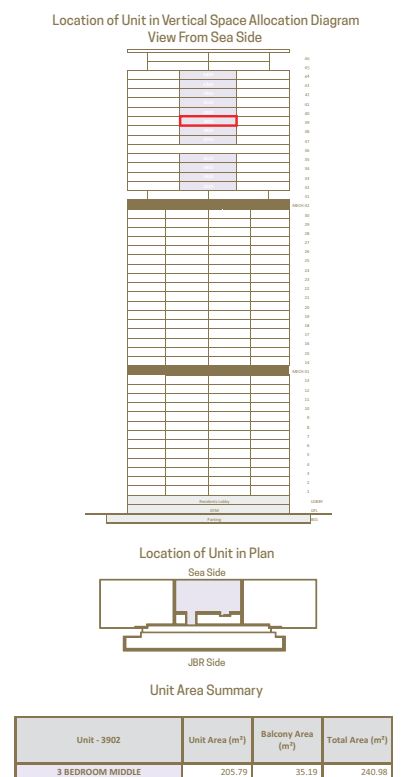
3-Bedroom Corner + Maid's Room

Located on Levels 32-44
Area: 271 sq. mt. (2,917 sq. ft.)
Balcony Area: 42 sq. mt. (452 sq. ft.)
Includes private lift lobby, maid's room, walk-in closet and possibility of adding a pool or jacuzzi



3-Bedroom + Laundry / Ironing

Located on Levels 32-44
Area: 203 sq. mt. (2,185 sq. ft.)
Balcony Area: 33 sq. mt. (355 sq. ft.)
Includes private lift lobby, storage room, ironing room

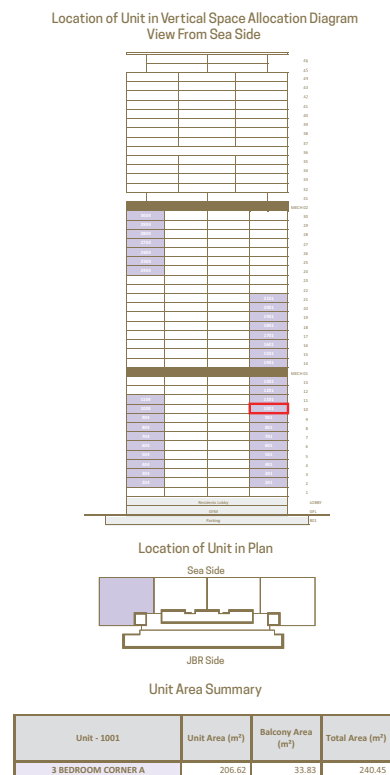




Note: Balconies vary based on the floor level and unit number. For final selection refer to individual sales plans.

3-Bedroom Corner + Maid's Room

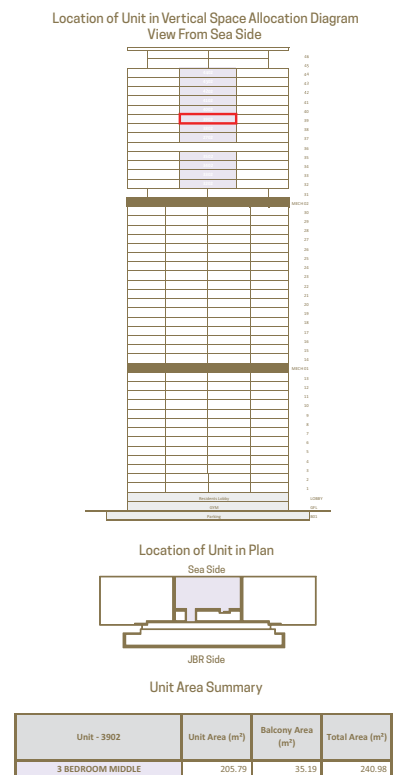
Located on Levels 1-30
 Area: 207 sq. mt. (2,228 sq. ft.)
 Balcony Area: 34 sq. mt. (364 sq. ft.)
 Includes maid's room, storage room



Note: Balconies vary based on the floor level and unit number. For final selection refer to individual sales plans.

4-Bedroom Corner + Maid's Room

Located on Levels 32-44
 Area: 302 sq. mt. (3,251 sq. ft.)
 Balcony Area: 49 sq. mt. (527 sq. ft.)
 Includes private lift lobby, walk-in offset, maid's room





056 650 6590



marketing@homes4life.ae

Office 25 | Oasis Center | Sheikh Zayed Road | Dubai | UAE | P.O. Box 34542

BUY | SELL | RENT | PROPERTY MANAGEMENT SERVICES